



Nature based playground at Kyeemagh Public School

# Kyeemagh Public School

Project update | August 2021

## Investing in our schools

The NSW Government is investing \$7.9 billion over the next four years, continuing its program to deliver 215 new and upgraded schools to support communities across NSW. This is the largest investment in public education infrastructure in the history of NSW.

The NSW Department of Education is committed to delivering new and upgraded schools for communities across NSW. The delivery of these important projects is essential to the future learning needs of our students and supports growth in the local economy.

## Project overview

A project is underway to redevelop Kyeemagh Public School to bring students new and improved facilities and support the growing student community. The project will deliver flexible learning spaces, a new library, canteen, hall, covered outdoor learning area (COLA) and upgrades to the staff administration area.

## For more information contact:

School Infrastructure NSW  
Email: [schoolinfrastructure@det.nsw.edu.au](mailto:schoolinfrastructure@det.nsw.edu.au)  
Phone: 1300 482 651  
[www.schoolinfrastructure.nsw.gov.au](http://www.schoolinfrastructure.nsw.gov.au)

## **Progress summary**

The first stage of the Kyeemagh Public School redevelopment is now complete. Stage 2 works have started and include the following works:

- the new multicourt sports space
- the new hall
- a new canteen
- staff car park upgrades
- covered outdoor learning space.

Upcoming works will include:

- earth works
- construction of ground floor foundations, and
- installation of in ground services.

## **Change in construction hours**

The NSW Government has recently passed legislation to allow construction hours to be extended outside of those specified in the development consent conditions (Environmental Planning and Assessment Act (1979) under the COVID-19 Development-Construction Work Days) Order (No 2) 2021 to protect the health, safety and welfare of construction workers and our community during the COVID-19 pandemic.

The new construction hours are:

- 7 am to 6 pm Monday to Friday,
- 7 am to 5 pm Saturday, and
- 9 am to 5 pm Sunday.

Work completed on a Sunday is restricted to certain activities to minimise noise and impact to the community. No work will occur on public holidays, unless otherwise notified.

The health, safety and well-being of students, staff, neighbours and community is our highest priority. For any queries relating to this work, please contact School Infrastructure NSW using the contact details below.

Thank you for your patience and cooperation during these important works.

## **COVID safety**

A comprehensive COVID-19 Safety Plan will be in place for the site and the contractor will enforce strict compliance with the Public Health Order. Our construction sites will follow all current health guidelines, including workers wearing masks for indoor and outdoor work.

## **For more information contact:**

School Infrastructure NSW  
Email: [schoolinfrastructure@det.nsw.edu.au](mailto:schoolinfrastructure@det.nsw.edu.au)  
Phone: 1300 482 651  
[www.schoolinfrastructure.nsw.gov.au](http://www.schoolinfrastructure.nsw.gov.au)

## Frequently asked questions

### How will the operational area of the school be safely separated from the construction zone?

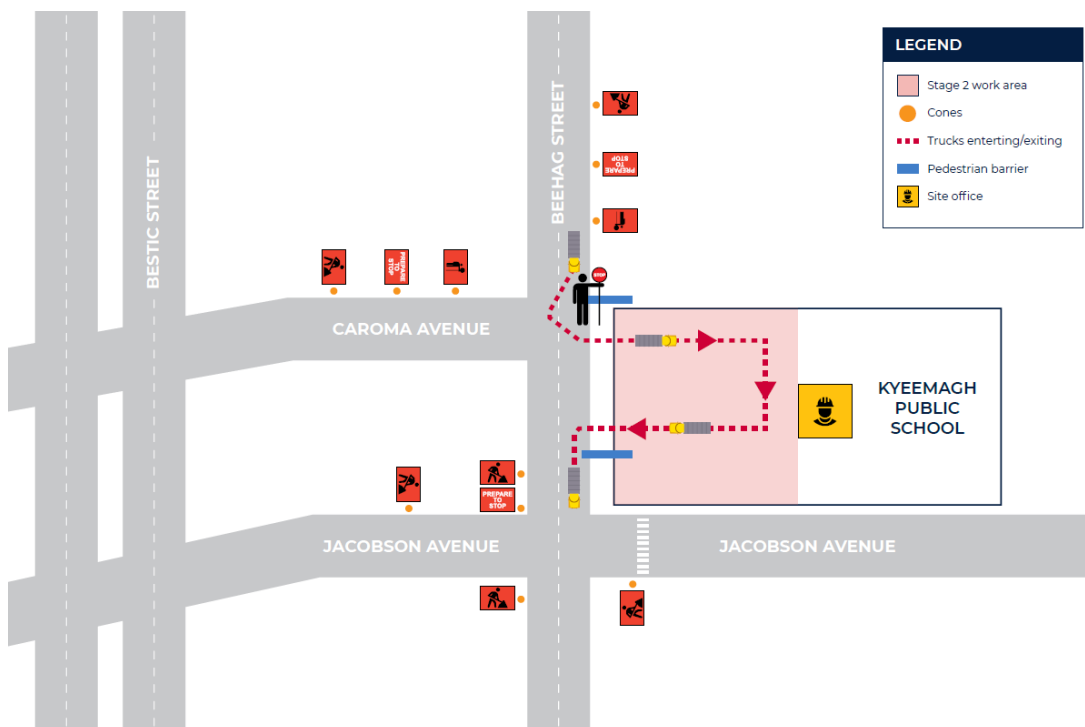
The construction site will be separated with barriers and fencing and not pose a risk to staff, students or the local community. The school will operate in the newly completed part of the school, while the remaining construction work continues.

### How long will construction of Stage 2 take?

Stage 2 construction is expected to be complete by late 2021.

### How will traffic be managed?

A new Traffic Control Plan has come into effect for the Stage 2 site to ensure trucks are able to enter and exit the site in a forward motion. Please see the plan below. This plan will be in place until the end of August.



### For more information contact:

School Infrastructure NSW  
Email: [schoolinfrastructure@det.nsw.edu.au](mailto:schoolinfrastructure@det.nsw.edu.au)  
Phone: 1300 482 651  
[www.schoolinfrastructure.nsw.gov.au](http://www.schoolinfrastructure.nsw.gov.au)