




Investing in our schools


School Infrastructure NSW is redeveloping Kyeemagh Public School to bring students new and improved facilities and to support the growing student community from Kindergarten to Year 6.


Benefits:


**17** Flexible learning spaces


**2** special programs rooms


Library

Hall

Amenities

Canteen

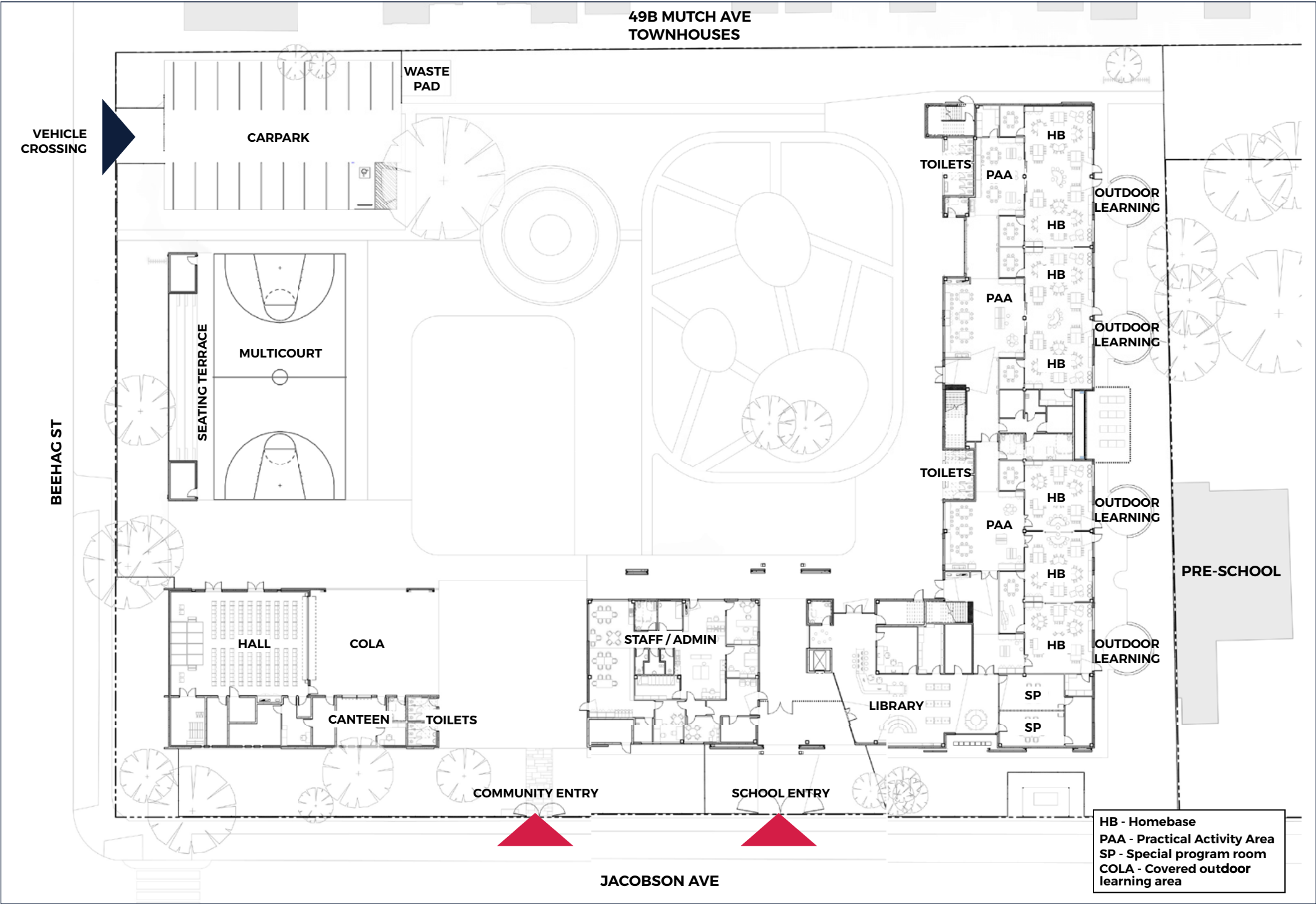
Covered outdoor learning area (COLA)

Staff / administration area



Artist impression of the Kyeemagh Public School redevelopment

Design – site layout

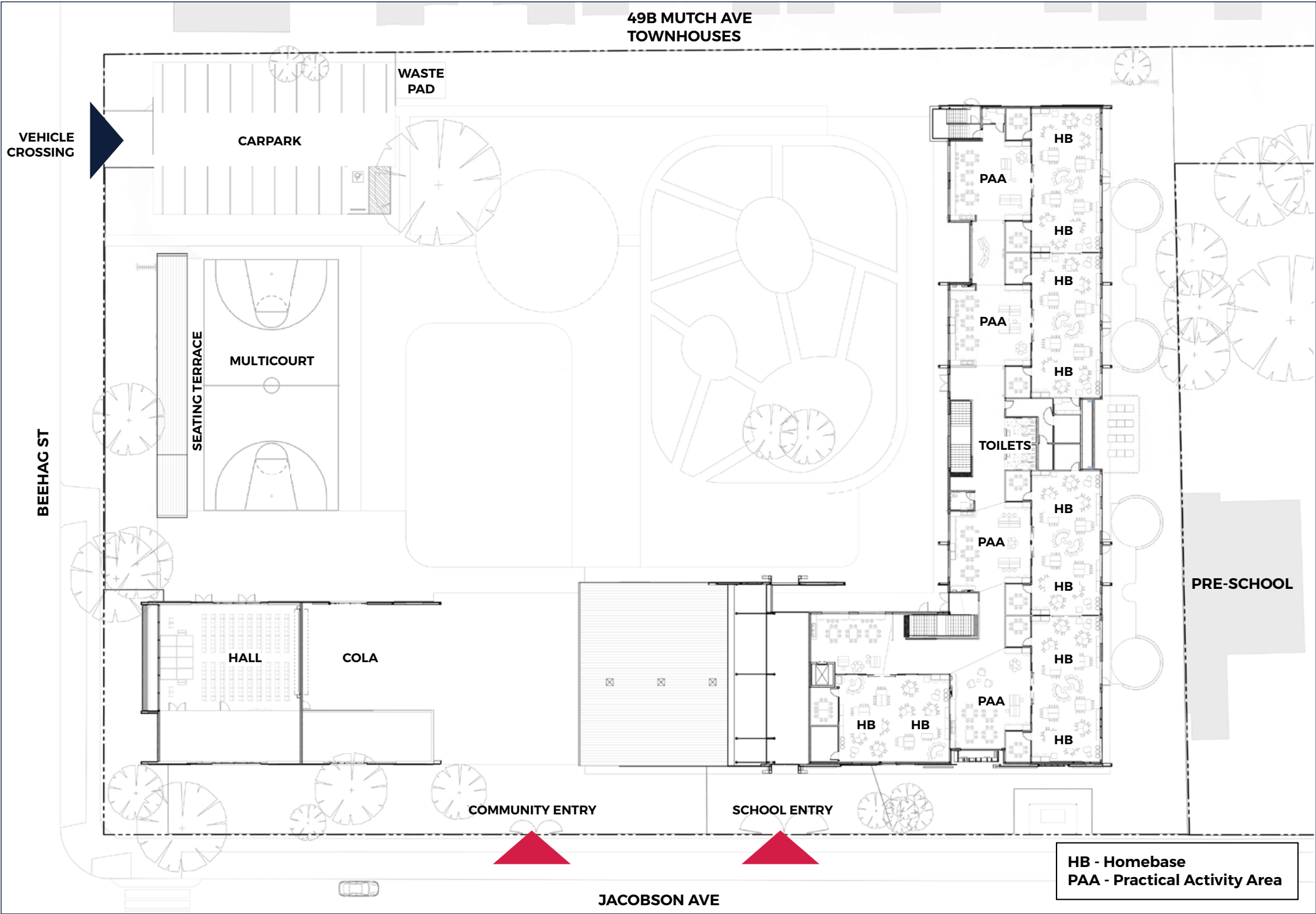


Site layout of the Kyeemagh Public School project

Kyeemagh Public School project

For more information phone: 1300 482 651
Email: schoolinfrastructure@det.nsw.edu.au

Design – level 1 layout



Level 1 layout of the Kyeemagh Public School project

Kyeemagh Public School project

For more information phone: 1300 482 651
Email: schoolinfrastructure@det.nsw.edu.au

Kyeemagh Public School community views



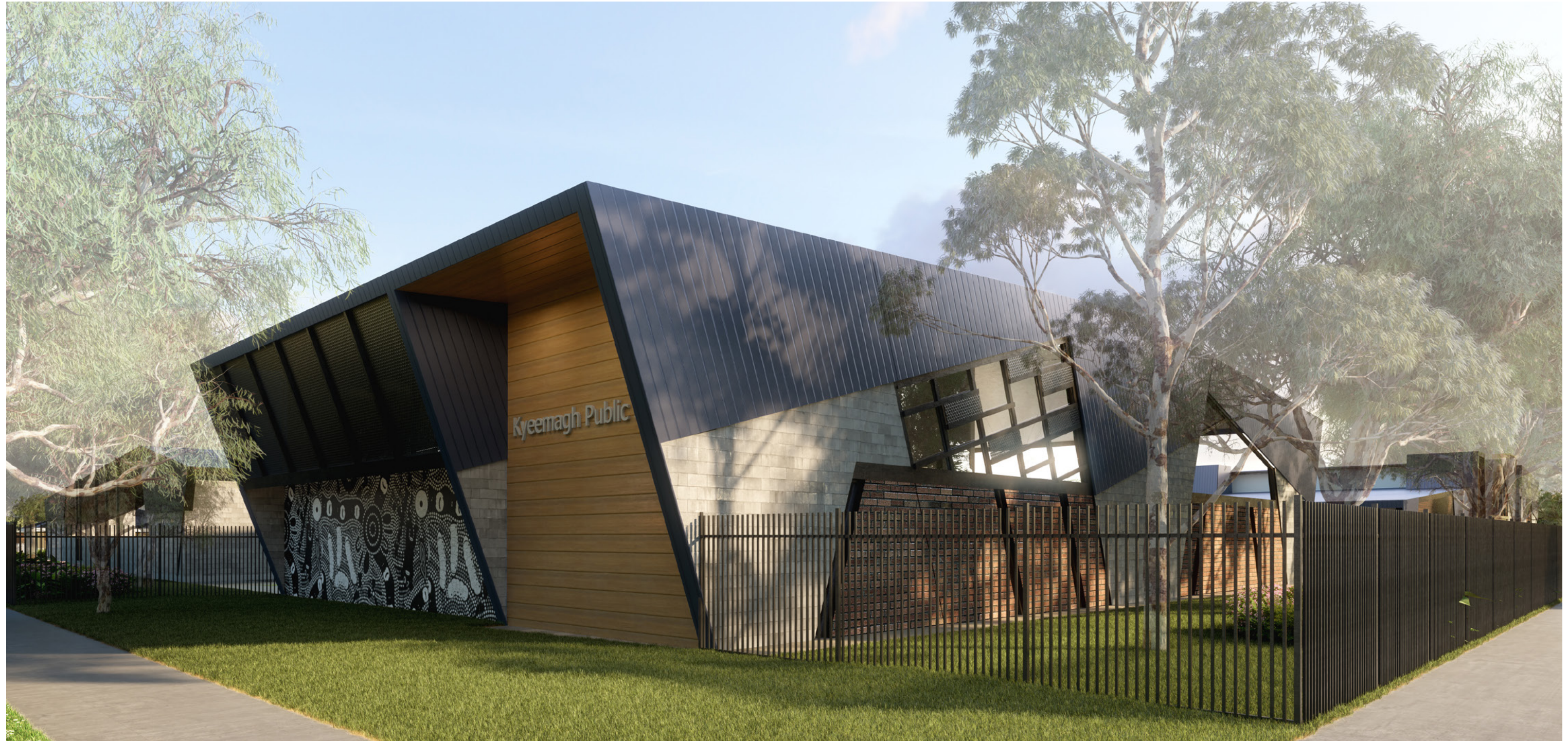
Artist impression of the view from Jacobson Avenue

Kyeemagh Public School project

For more information phone: 1300 482 651
Email: schoolinfrastructure@det.nsw.edu.au

schoolinfrastructure.nsw.gov.au





Artist impression of the view from the corner of Beehag Street and Jacobson Avenue

schoolinfrastructure.nsw.gov.au

Kyeemagh Public School project

For more information phone: 1300 482 651
Email: schoolinfrastructure@det.nsw.edu.au





Artist impression of the view of the hall from Jacobson Avenue



Artist impression of the Kyeemagh Public School redevelopment

Watch the flythrough



Kyeemagh Public School project

For more information phone: 1300 482 651
Email: schoolinfrastructure@det.nsw.edu.au

schoolinfrastructure.nsw.gov.au

Playground design



Artist impression of the playground

Kyeemagh Public School project

For more information phone: 1300 482 651
Email: schoolinfrastructure@det.nsw.edu.au

schoolinfrastructure.nsw.gov.au



Concept playground layout

* Subject to change



Kyeemagh Public School project

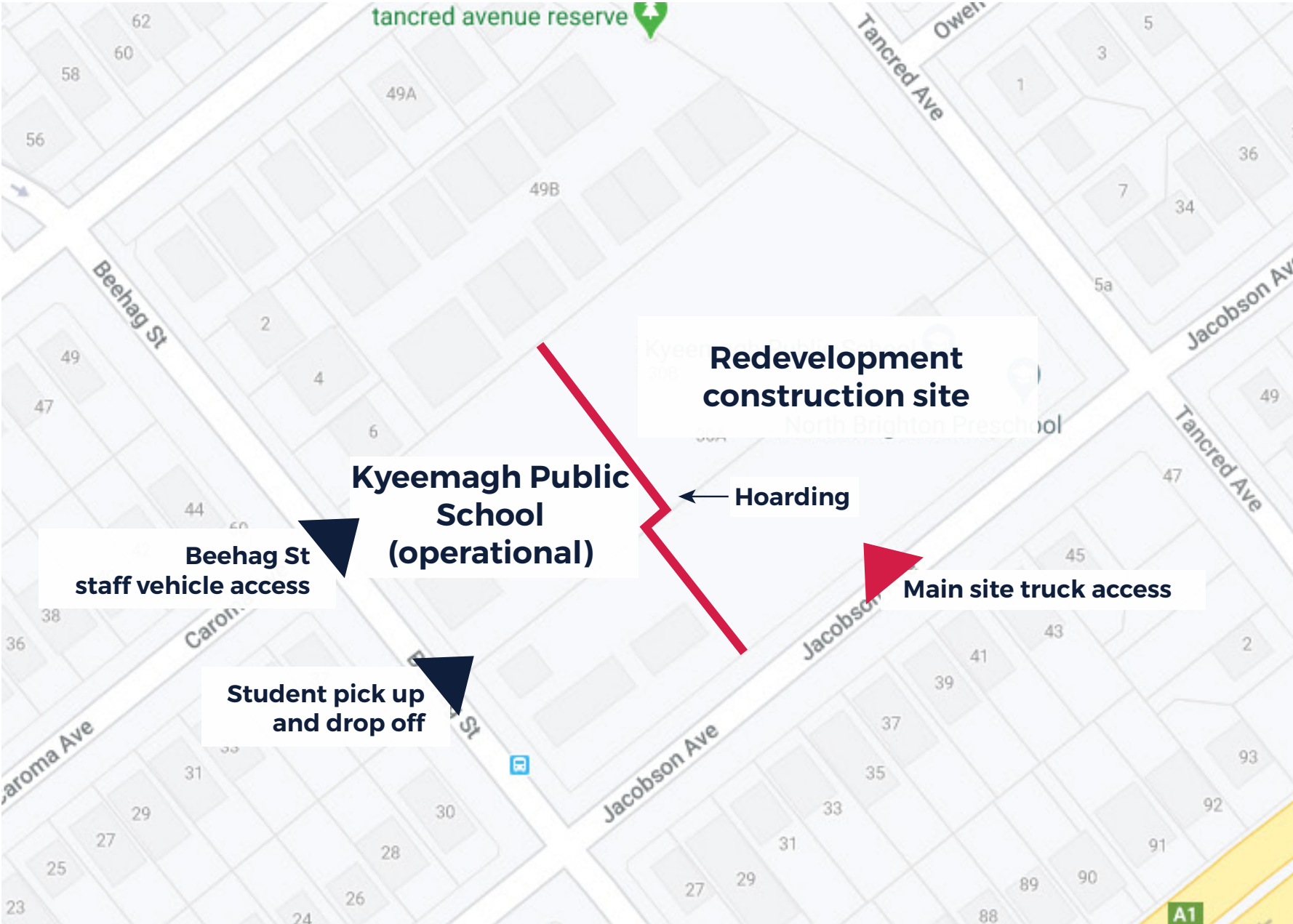
For more information phone: 1300 482 651
Email: schoolinfrastructure@det.nsw.edu.au

schoolinfrastructure.nsw.gov.au

Access information

Student and staff access

- Student pick up and drop off is at the Beehag Street main entrance
- Staff vehicle access via the Beehag Street carpark.



Pedestrian and vehicle access to Kyeemagh Public School during construction

Kyeemagh Public School project

For more information phone: 1300 482 651
Email: schoolinfrastructure@det.nsw.edu.au

Environmental assessment

An Environmental Impact Statement (EIS) was lodged with the State Significant Development (SSD).

Some of the technical studies undertaken for the EIS include:

- Design analysis
- Traffic and transport
- Noise and vibration
- Heritage
- Sustainable design
- Aboriginal assessment
- Preliminary construction management
- Hydraulic
- Geotechnical
- Contamination
- Building Code of Australia compliance and access design assessment
- Waste management
- Flora and fauna.



Artist impression of the Kyeemagh Public School redevelopment

Managing construction impacts

Construction hours

Standard construction hours are:

- 7:00am to 6:00pm Monday to Friday
- 8:00am to 1:00pm Saturdays
- No work will be conducted on Sundays or Public holidays, unless required to maintain social distancing during the COVID-19 pandemic.

In line with the current NSW Environmental Planning and Assessment (COVID-19 Development – Construction Work Days Order 2020), during the COVID-19 pandemic, School Infrastructure NSW construction sites can operate between 7:00am and 6:00pm on weekends and public holidays. This is to allow workers to abide by social distancing rules while on construction sites by distributing building work across the week.

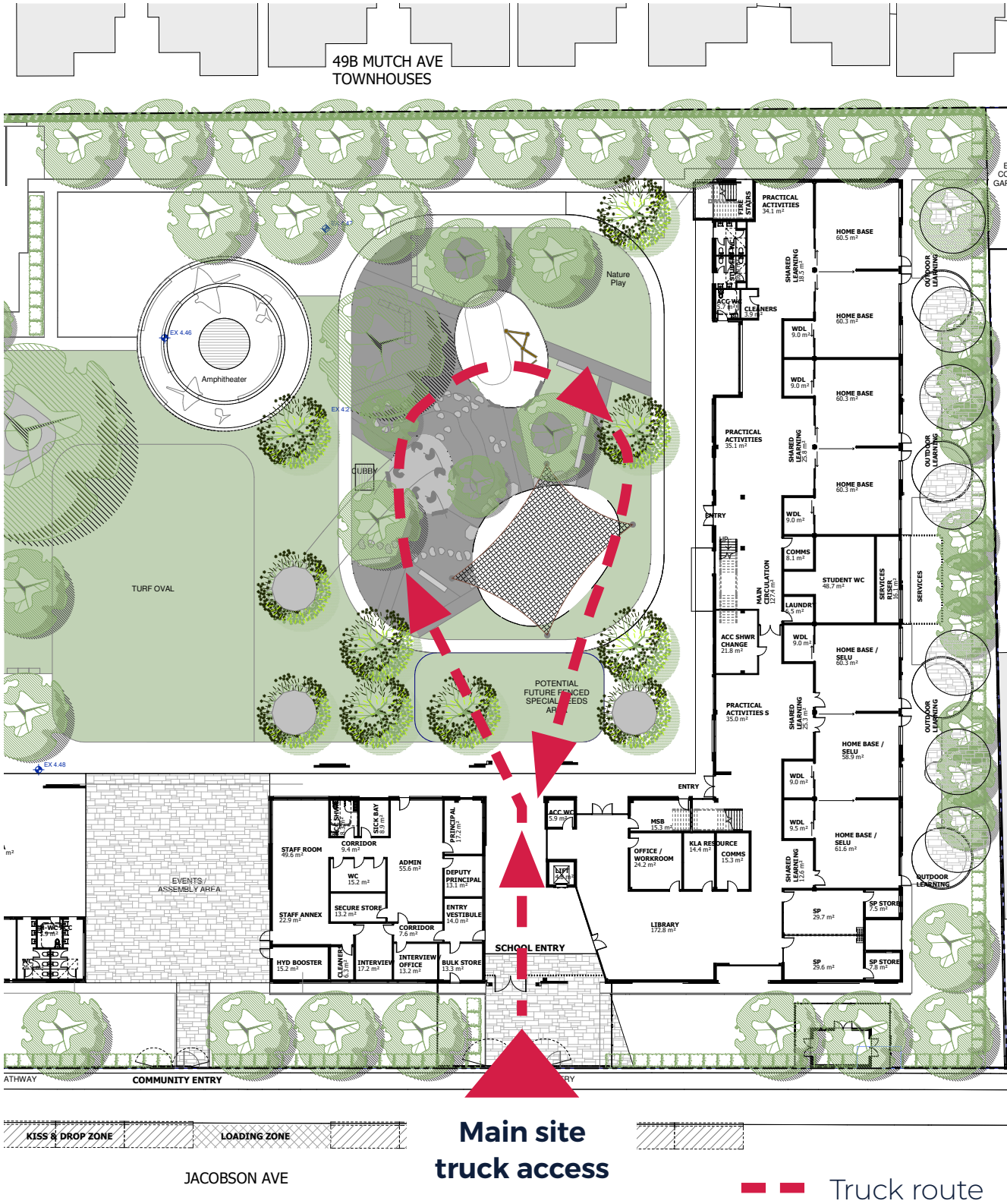
The community will be kept informed of any changes to the standard working hours under this Order.

Truck access

The main truck access to the construction site is via Jacobson Avenue.

A secondary entrance through the Beehag Street carpark entrance as required with approval.

Traffic management will be in place where required for the safety of the local community and workers. Traffic controllers will be used to manage entry and exit of vehicles to and from the construction site as necessary. Vehicles will give way to pedestrians at all times.



Kyeemagh Public School project

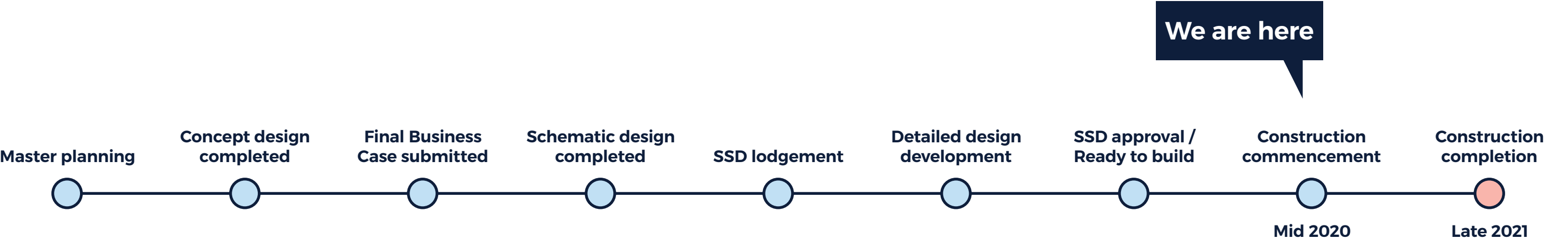
For more information phone: 1300 482 651
Email: schoolinfrastructure@det.nsw.edu.au

Project process and timeline

The Department of Planning, Industry and Environment (DPIE) is responsible for managing the approval for this project because it is a SSD. The Minister for Planning or their delegate is the consent authority.

Kyeemagh Public School is among the third wave of projects that have had their assessments fast tracked. Having the SSD application fast tracked means the project can get underway sooner and the overall construction pipeline can continue to grow.

You can view the SSD for Kyeemagh Public School on the DPIE website: planningportal.nsw.gov.au/major-projects/project/10691



Next steps

- Initial works include in ground remediation and demolition
- Excavation and installation of footings and foundations for the school buildings.

Kyeemagh Public School project

For more information phone: 1300 482 651
Email: schoolinfrastructure@det.nsw.edu.au

Keeping you up to date

During construction, we will keep you informed with progress and upcoming work with project updates, works notifications and the project page on the School Infrastructure NSW website.

Let us know what you think about how we propose to manage construction activities. Provide your feedback via email or phone by Tuesday 11 August 2020.

[Read the latest project update](#)

[Visit the project page](#)

For more information

You can speak with a member of the School Infrastructure NSW project team about the Kyeemagh Public School project at:

Phone: 1300 482 651

Email: schoolinfrastructure@det.nsw.edu.au



Example of an innovative learning space we delivered for students in NSW