



Artist impression of Ku-ring-gai High School upgrade

## Ku-ring-gai High School

### Project update

August 2019

#### Investing in our schools

The NSW Government is investing \$6.7 billion over the next four years to deliver 190 new and upgraded schools to support communities across NSW. In addition, a record \$1.3 billion is being spent on school maintenance over five years. This is the largest investment in public education infrastructure in the history of NSW.

#### Ku-ring-gai High School

A major project is underway to upgrade Ku-ring-gai High School. This project will deliver a new multi-purpose hall that will replace the concrete dome and refurbishment of some of the school's existing teaching spaces.

#### Progress summary

Planning approval has been granted for the new multi-purpose hall. The upgrade is expected to be completed mid 2020.

During Term 2 and school holidays, temporary demountables were installed and the lift excavation works completed.

#### Next steps

In Term 3, the contractors will:

- complete the refurbishment on the first three classrooms located in Block E
- install safety hoarding and fencing around the area for the new hall construction
- complete the lift in Block D
- commence the refurbishment next three classrooms.

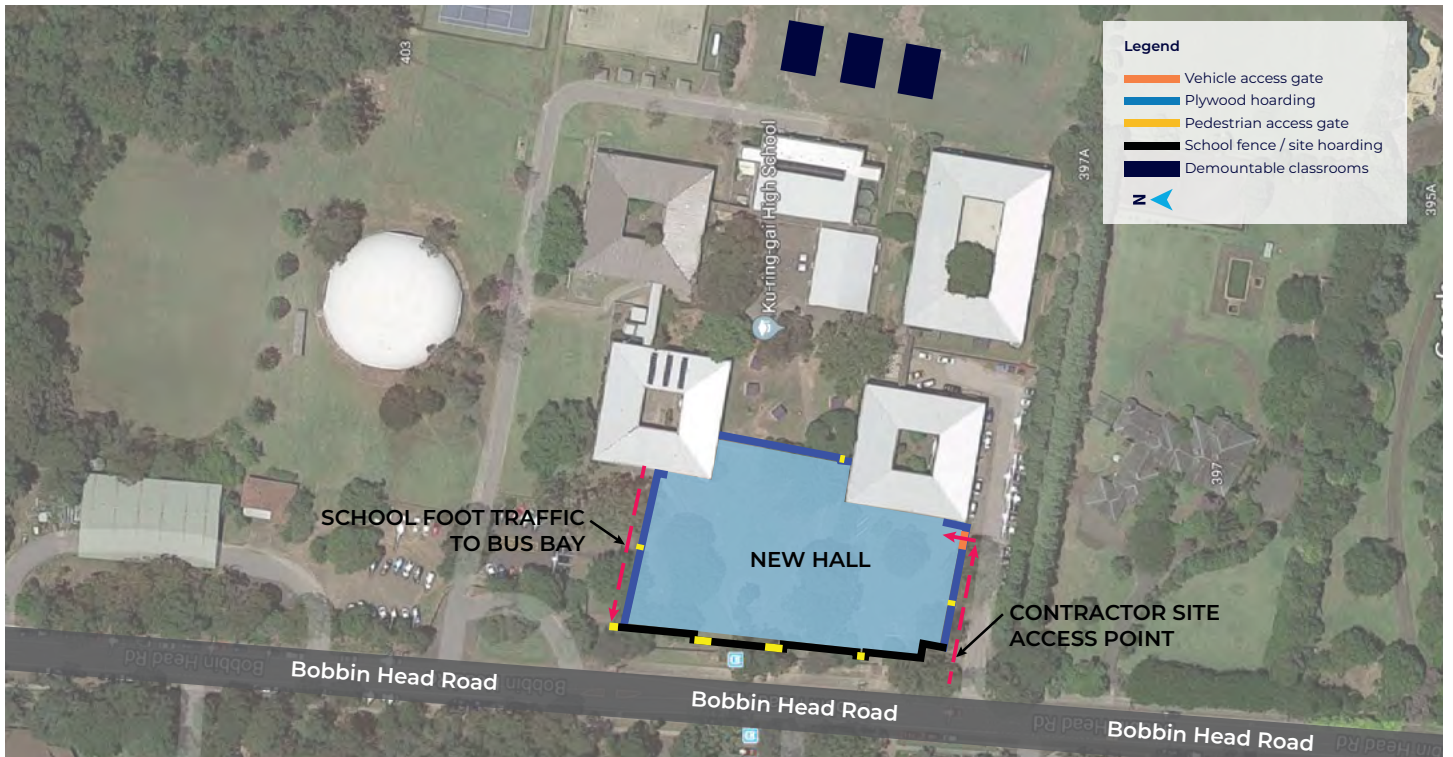
#### Important: Changes to student access to the bus bays

In August, we will install hoarding around the site location for the new hall.

This means there will be some changes to the way students access the bus bays on Bobbin Head Road.

Students will need to walk around the hoarding and gather in front of the Tagore Building for bus travel.

Please see over page for a detailed map of the access paths and demountable locations.



## Frequently asked questions

### What are the hours of work?

We are working closely with the Principal to schedule works to minimise disruption to learning as much as possible. We do this by scheduling deliveries and major noisy works outside of peak school times.

Work will take place from 7am to 5pm Monday to Friday, and 8am to 1pm, Saturdays. No work will take place on Sundays or public holidays.

### Is there an impact to current school operations?

No. School operations during Term 3 will continue as usual.

### What steps will be taken to control noise and dust impacts?

Hoarding and shade cloth will be erected to reduce noise and dust impacts on the school and our neighbours.

### For more information contact:

School Infrastructure NSW  
Email: [schoolinfrastructure@det.nsw.edu.au](mailto:schoolinfrastructure@det.nsw.edu.au)  
Phone: 1300 482 651  
[www.schoolinfrastructure.nsw.gov.au](http://www.schoolinfrastructure.nsw.gov.au)

### How will traffic be managed?

The site will be separated from the school grounds by security fences and hoardings and contractors will enter the site via dedicated entryways as shown on the map above. Traffic management measures will be put in place to ensure access around school grounds is managed.

Construction vehicle movements and deliveries will be scheduled to minimise impacts to peak times.

### How will you keep us informed?

School infrastructure NSW is committed to keeping the school community and near neighbours informed about the project.

If you have any further queries, please do not hesitate to call the School Infrastructure NSW hotline or email address below.

Thank you for your patience during these works and we are thrilled to deliver this project for the school community.