

Kingscliff Public School upgrade

Information pack | March 2021



Artist impression of the Kingscliff Public School upgrade

The NSW Government is investing \$7 billion over the next four years, continuing its program to deliver more than 200 new and upgraded schools to support communities across NSW. This is the largest investment in public education infrastructure in the history of NSW.

The NSW Department of Education is committed to delivering new and upgraded schools for communities across NSW. The delivery of these important projects is essential to the future learning needs of our students and supports growth in the local economy.

Project overview

We are upgrading Kingscliff Public School to provide new permanent teaching spaces and core facilities.



32 new permanent innovative and flexible learning spaces



New play spaces



Extended school hall



New library



Redeveloped school entry

Progress summary

Early works

Early works to extend the existing school hall, provide new out of school hours care (OSHC) facilities, and construct a new canteen, were finished in November 2020. The hall is now able to accommodate the entire student population and the school has been able to establish an OSHC service.

Design

We have now finalised the schematic design for the remainder of the upgrade in consultation with school staff and stakeholders. The schematic design, which will be submitted with the development application for the project, confirms the internal layout of spaces and how they will function.

Main works

A construction contractor has been appointed for the main works and is currently working through a process to become familiarised with the project.

Statutory planning

Due to the level of investment involved, the Kingscliff Public School upgrade is considered a State Significant Development (SSD) and therefore the NSW Department of Planning, Industry and Environment (DPIE) will assess the development application for the project.

The State Significant Development Application (SSDA) will be lodged with DPIE soon and placed on public exhibition on the DPIE major projects website. DPIE will notify neighbouring residents and place a notice in the local newspaper advising of the public exhibition timing and process. Submissions can be made directly to DPIE by post or online during the exhibition period.

We are also conducting a Review of Environmental Factors (REF) which will enable us to progress the construction of the new administration building while the SSDA is being assessed.

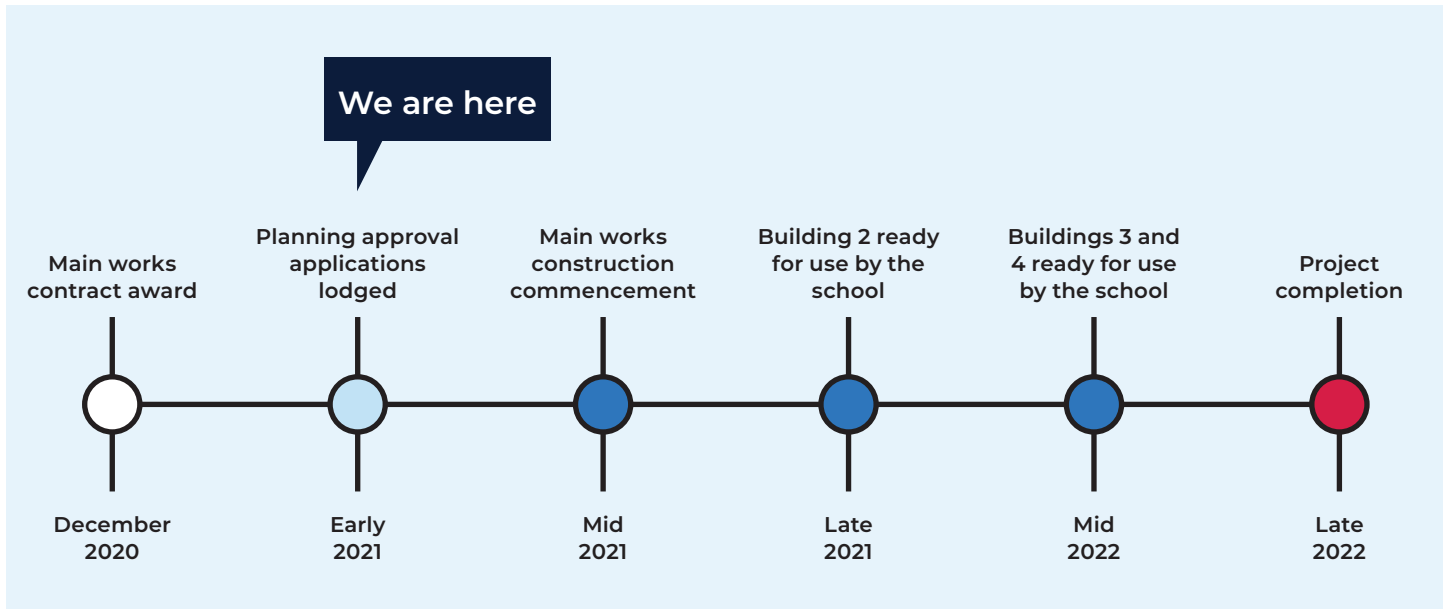


Extended school hall at Kingscliff Public School

Project schedule

The timeline for completion of main works has been extended to cater for additional time needed to achieve planning approvals and meet the conditions of consent. It is anticipated that the upgrade of Kingscliff Public School will now be completed by late 2022.

To ensure the school gains the benefits of new facilities as soon as possible, the upgrade will be delivered progressively. In addition to the early works already delivered, further new facilities will be ready for use by the school in late 2021, with the remainder being ready for use throughout 2022.



Construction approach

The upgrade to Kingscliff Public School is being delivered progressively so that the school can remain operational on the current site during construction and so that facilities can be made available to the school as soon as possible.

2020

Early works. Completed in November 2020 and in use by the school.

- Extended school hall
- New OSHC facilities
- New student canteen

2021

Ready for use by the school in late 2021

- New administration building

2022

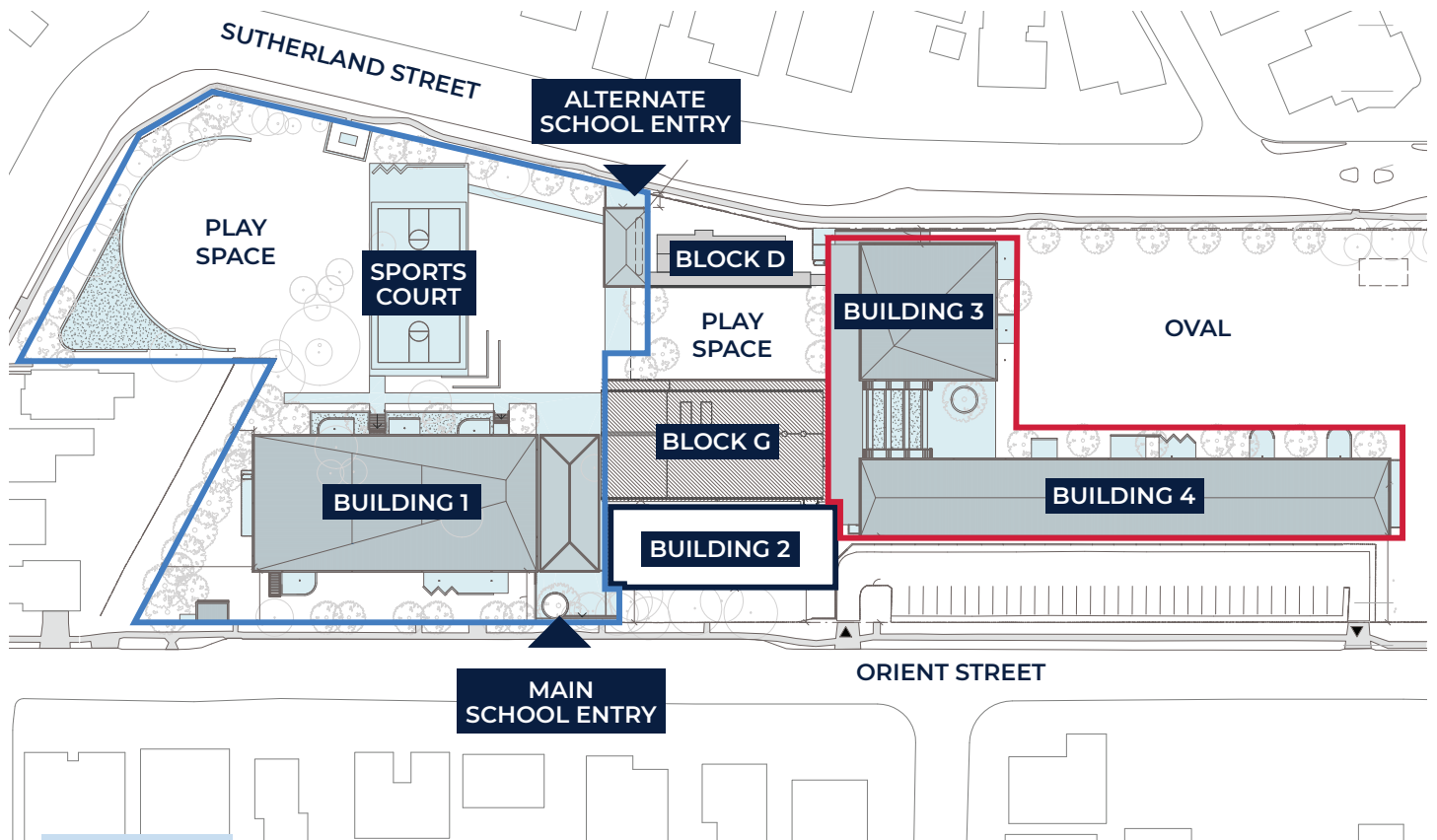
Ready for use by the school progressively in 2022

- New learning spaces in Buildings 1, 3 and 4
- New library
- Redeveloped main entrance including covered outdoor learning area
- Redeveloped secondary entrance including covered outdoor learning area
- New sports court
- Landscaping

Site plan

The site plan below shows all the development proposed at the site as well as the indicative construction timing. It reflects the designs that will be submitted as part of the State Significant Development Application.

The design of the upgrade offers a more functional and better connected layout for the school. It enables the required increase in permanent learning spaces and provides a new library, a more visually appealing and practical street entry and a variety of open spaces for learning, play and sport.



LEGEND

- | | |
|--|--|
| Building 1: New library and learning spaces |  Ready for use by the school in 2021 |
| Building 2: New administration building |  Ready for use by the school in mid 2022 |
| Building 3: New teaching block |  Ready for use by the school in late 2022 |
| Building 4: New teaching block | |
| Block G: Hall, canteen and OSHC | |
| Block D: Bathrooms | |

New buildings

The scope of work for the upgrade includes construction of four brand new, architecturally designed buildings in addition to the redevelopment of school entries and landscaping.

Building 1 is a new teaching block which will include:

- A new, centrally-located library on the ground floor
- 12 new, permanent, innovative learning spaces including practical activities areas
- A special programs room
- New student bathrooms
- A lift connecting the levels
- Access to new outdoor learning areas directly from ground floor learning spaces
- Covered walkways

Building 2 will locate administration and staff spaces close to the main school entry to improve oversight of pedestrian movement and security around the school. The building will include:

- The school's front office and administration spaces
- Principal and deputy principal's offices
- Staff rooms and amenities with access to outdoor seating
- Interview rooms
- Sick bay

Building 3 is a new teaching block which will include:

- Six new, permanent, innovative learning spaces
- Sports storage space
- Grounds assistant office and workshop
- Access to new outdoor learning areas directly from ground floor learning spaces
- Covered walkways

Building 4 is a new teaching block which will include:

- 14 new, permanent, innovative learning spaces including practical activities areas
- Two special programs rooms
- New student bathrooms
- A lift connecting the levels
- Access to new outdoor learning areas directly from ground floor learning spaces
- Covered walkways



Artist impression of the Kingscliff Public School upgrade

Transport

The NSW Department of Education is committed to playing its part in keeping roads and footpaths around our schools safe. This is a responsibility that is shared between the department, local councils, schools, parents and students, law enforcement, transport providers and Transport for NSW.

As part of the Kingscliff Public School upgrade we have been working with a transport consultant to understand how students and teachers travel to and from school and what impact the upgrade will have on vehicle movements.



31%

of students live within a 15 minute walk of the school



81%

of students live within a 15 minute ride of the school



96%

of students live within 400m of a bus route



58%

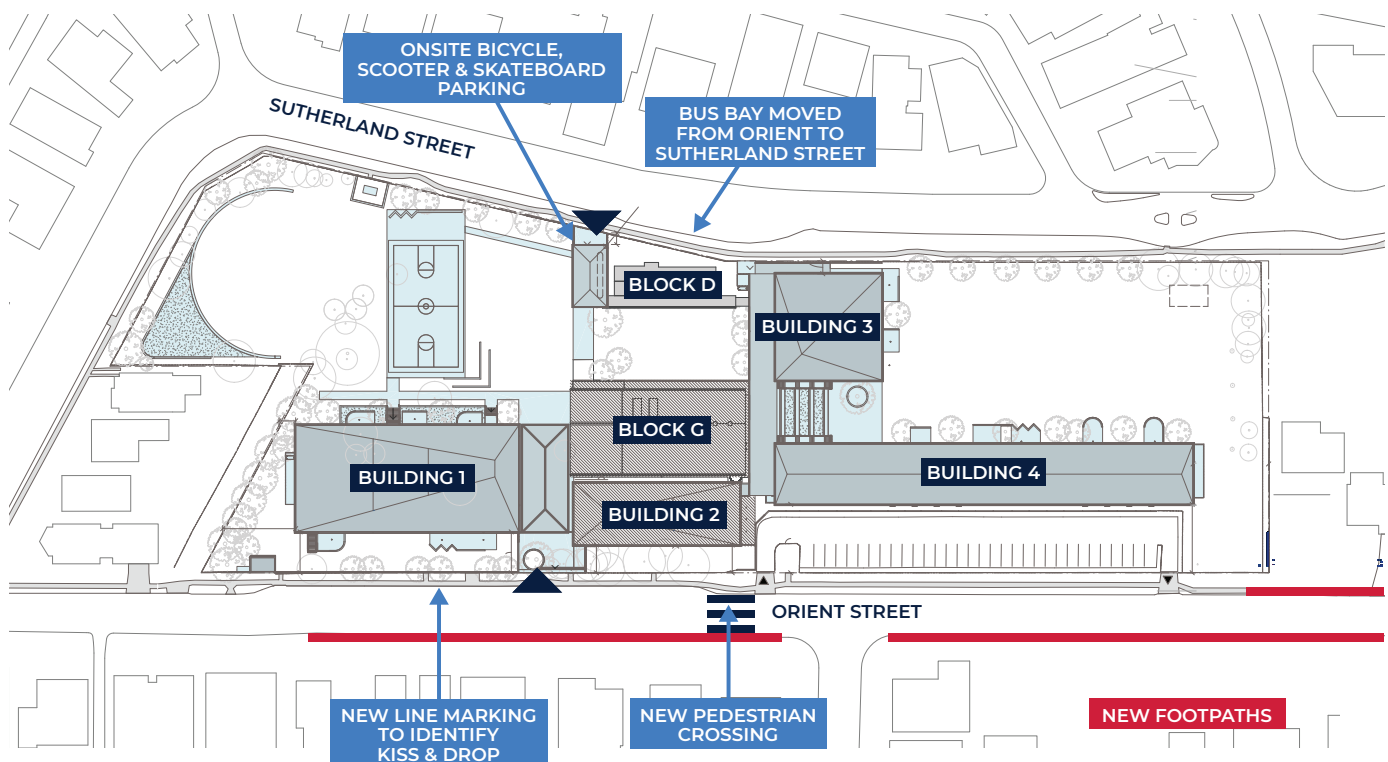
of students travel to school by private car

School Transport Plan

We have prepared a School Transport Plan (STP) which sets out the strategies to deliver efficient, safe and sustainable access to the school during the planning and delivery of the project and beyond. The STP is lodged with the State Significant Development Application but is a live document that will continue to evolve as we continue to work with the school and stakeholders.

Proposed transport infrastructure

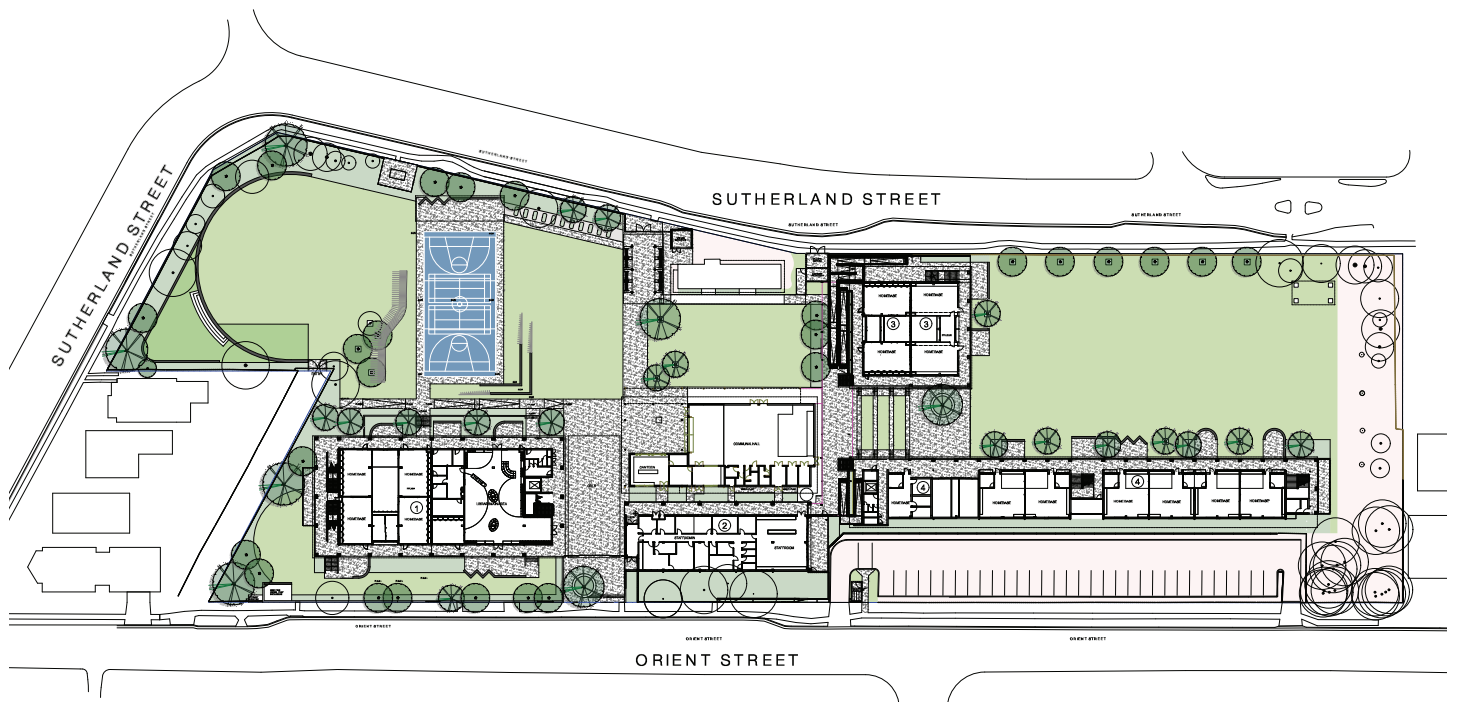
With many students living within walking, cycling or scooting distance of the school, the upgrade will deliver new bike, scooter and skateboard parking area to encourage more active journeys to and from school. Additional footpaths and a new school pedestrian crossing will make walking safer.



Landscaping

The upgrade will deliver significant improvements to outdoor spaces, providing a variety of green areas for active play, quiet recreation and sport.

Existing trees and the green buffer zone will be retained along the southern boundary and additional trees will be planted on either side of the oval. A new grassed area will be added in the centre of the school and the north eastern corner will be transformed to include a grassed space, sports court, play equipment, sandpit and soft fall play area.



Next steps

Design

The newly appointed building contractor is working through a process to become familiarised with the project. The contractor will then work with the school to finalise the detailed design for the upgrade. This includes selection of fixtures, fittings and furniture.

Construction

Over the coming months we will work with the building contractor to prepare for the commencement of main construction works. This involves reviewing and agreeing the construction management and traffic management plans and identifying and putting in place strategies to manage any risks.

Main construction works are expected to commence in mid 2021, subject to the necessary planning approvals. The first step will be site establishment, followed by ground works to prepare for construction of the new administration building.

Frequently asked questions

Where is the development application for the project up to?

The State Significant Development application (SSDA) will be lodged with the NSW Department of Planning, Industry and Environment (DPIE) soon and will then be placed on public exhibition on DPIE's major projects website. DPIE will notify neighbouring residents and place a notice in the local newspaper advising of the public exhibition timing and process. Submissions can be made directly to DPIE by post or online during the exhibition period.

What is a Review of Environmental Factors?

In 2017 the NSW Government introduced a new education-based State Environmental Planning Policy (SEPP) that aims to make it easier to provide new and upgraded education facilities for communities. Under the SEPP some development works can be carried out without development consent from council. For the Kingscliff Public School upgrade, the allowable works include construction of the new administration building. Before commencing the works we need to undertake a Review of Environmental Factors (REF) to determine whether there will be any potential impacts on the environment. As part of the REF process, a letter will be issued to neighboring residents and stakeholders, providing them with details of the proposed work and contact details for feedback or further information.

When will construction commence?

Construction is expected to commence in mid 2021, subject to the necessary planning approvals.

What is being done to improve road and pedestrian safety around the school?

As part of the Kingscliff Public School upgrade project we have conducted a transport assessment to identify the challenges and opportunities associated with student travel to and from school. We have also engaged with Tweed Shire Council and Transport for NSW to identify ways we can work together to deliver improvements.

The SSDA for the project includes a number of proposed changes to transport infrastructure including a new school pedestrian crossing, additional footpaths and parking for bikes, skateboards and scooters. Infrastructure is only part of the solution, and we will continue to work with the school and stakeholders to identify operational and behavior change initiatives to improve road and pedestrian safety. The building contractor will develop a Transport Management Plan and will be held accountable for safe movement of construction vehicles during building. We will keep the community informed of any temporary changes to road or pedestrian access arrangements.

Stay informed

We are committed to working together with our school communities and other stakeholders to deliver the best possible learning facilities for students.

To stay up to date with opportunities for school communities to get involved in the project, visit the Kingscliff Public School project page on the School Infrastructure NSW website.

Your feedback is important to us. For more information, questions or to make a comment, please email us at schoolinfrastructure@det.nsw.edu.au.

Stay informed



Website

Stay up to date by visiting the School Infrastructure NSW website schoolinfrastructure.nsw.gov.au



Email

Contact the Community Engagement team by emailing schoolinfrastructure@det.nsw.edu.au



Phone

Contact us between 9:00am and 5:00pm, Monday to Friday on **1300 482 651**