

# Kingscliff Public School

## Works notification

17 June 2021

Kingscliff Public School is being upgraded to provide new permanent teaching spaces and core facilities to cater for enrolment growth in the area. The scope of work includes replacement of all classrooms, including demountable buildings, a new library, an extended hall and new canteen, new outdoor spaces and a redeveloped school entry.

### Term 2 school holiday works

From Saturday 26 June 2021 and during the Term 2 school holiday period, our contractors will be onsite at Kingscliff Public School carrying out a range of works associated with the school upgrade project.

Work will include rectification of flooring in the Out of School Hours Care (OSHC) office, site establishment and preparation for construction.

Establishment of the site compound and construction headquarters on the eastern side of the oval adjacent to Sutherland Street, will involve installation of temporary fencing and hoardings, laying of hardstand, and delivery and installation of site sheds. Heavy vehicles and cranes will be used and there may be some periods of noisy work.

### Preparation for construction of new administration building

A construction area will also be established between the main Orient Street school entrance and the staff carpark to prepare for construction of the new administration building (Building 2), which will commence during Term 3. Activities will include:

- Installation of temporary construction fencing and hoardings
- Removal of vegetation and trees
- Demolition of footpaths and site stripping
- In-ground works.

### Transport management

A transport management plan will be implemented to maintain staff, student and public safety during the works and minimise disruption to the school and local community.

Construction vehicle access to the site compound will be predominantly via the gates on Sutherland Street, however there will also be occasional access of heavy vehicles from Orient Street. A temporary construction vehicle access route will be established along the oval boundary to connect the site compound with the Building 2 construction area. During the receipt of large deliveries and during major concrete pours, traffic controllers will be engaged to assist with the management of vehicles into and around the site.

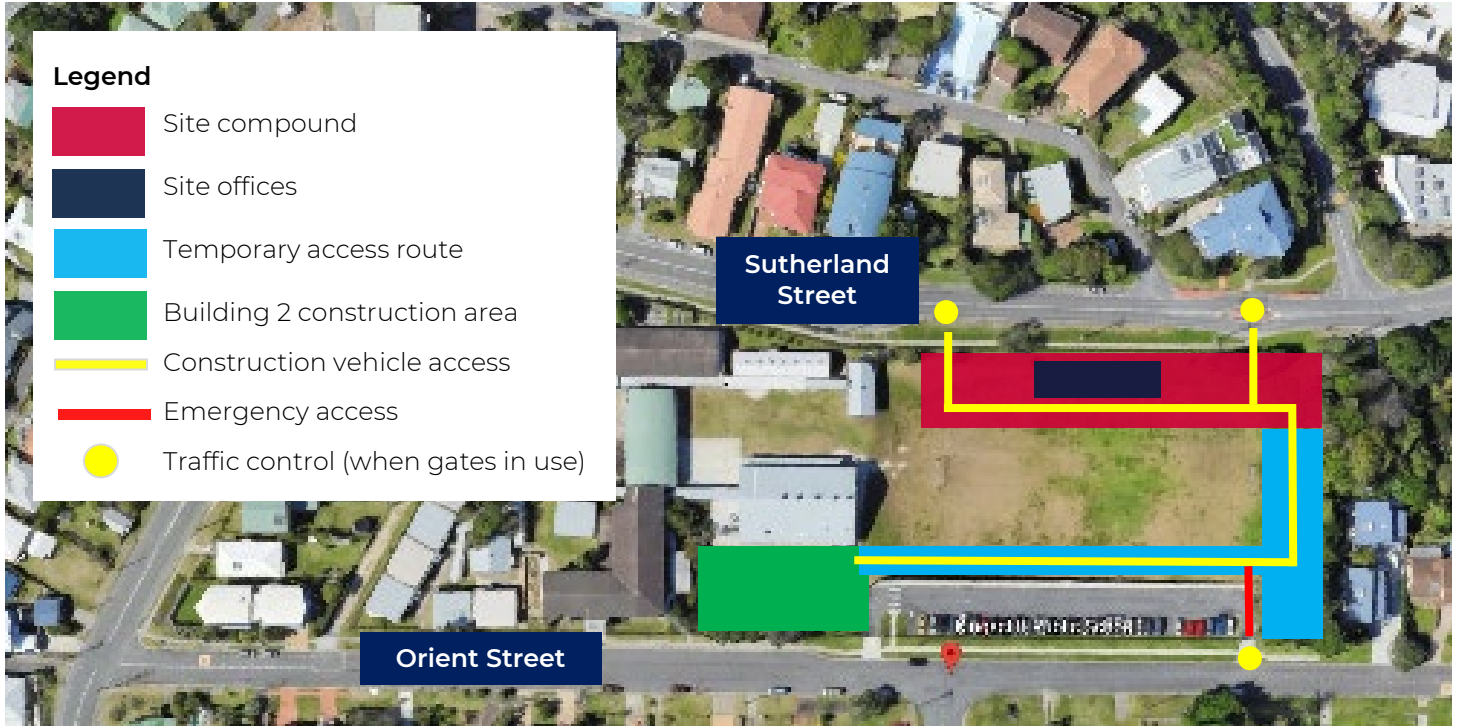
Safe pedestrian access to the site will be provided at all times. Road safety signage, footpath detours and traffic control will be used as required. Contractors and subcontractors will be required to comply with local parking regulations and access to private properties will be maintained at all times.

---

#### For more information contact:

School Infrastructure NSW  
Email: [schoolinfrastructure@det.nsw.edu.au](mailto:schoolinfrastructure@det.nsw.edu.au)  
Phone: 1300 482 651  
[www.schoolinfrastructure.nsw.gov.au](http://www.schoolinfrastructure.nsw.gov.au)

## Works site plan



### What will the working hours be?

Standard project working hours will be 7:00am to 6:00pm Monday to Friday, and 8:00am to 1:00pm on Saturdays. No work will take place on Sundays or public holidays.

### How will Out of School Hours Care (OSHC) be impacted?

The OSHC service will continue to operate during construction. If the OSHC office, hall, or oval are unavailable at any time, alternative indoor or outdoor areas will be provided. Our contractors will work closely with the OSHC operator to provide information and minimise disruption. The operators will advise parents in advance of any temporary changes to OSCH arrangements.

### Will students still be able to use the oval during works?

Yes. A large section of the oval will remain available for school use during the first phase of construction. The site compound, construction area and access road will be fully fenced to maintain separation and safety. Other outdoor spaces across the school site, including the COLA and grassed area between the hall and amenities block, will also be available for student play and recreation and OSHC use during construction.

### How will Aboriginal heritage be protected during works?

We are continuing to work with the community to ensure Aboriginal heritage is protected. An Aboriginal Cultural Heritage Assessment (ACHA) has been completed and we are finalising an Aboriginal Heritage Management Plan (AHMP) for construction. In the interim, and when we are conducting work at depths or in areas deemed to be of elevated risk, work will be monitored by representatives of the local Aboriginal community. An Aboriginal heritage induction will be provided for all contractors.

#### For more information contact:

School Infrastructure NSW  
Email: [schoolinfrastructure@det.nsw.edu.au](mailto:schoolinfrastructure@det.nsw.edu.au)  
Phone: 1300 482 651  
[www.schoolinfrastructure.nsw.gov.au](http://www.schoolinfrastructure.nsw.gov.au)