

Kingscliff Public School

Information pack

May 2020



Artist impression of the redeveloped school entry

The NSW Government is investing \$6.7 billion over four years to deliver more than 190 new and upgraded schools to support communities across NSW. In addition, a record \$1.3 billion is being spent on school maintenance over five years. This is the largest investment in public education infrastructure in the history of NSW.

The NSW Department of Education is committed to delivering new and upgraded schools for communities across New South Wales. The delivery of these important projects is essential to the future learning needs of our students and supports growth in the local economy.

Change to information sessions

School Infrastructure NSW is committed to keeping the school and local community informed about this important project.

We are temporarily changing some of the ways we communicate to account for social distancing measures. Until further notice we are sharing information online instead of in person.

About this information pack

This pack provides an update on the latest plans and designs for the Kingscliff Public School upgrade.

In this document you will find an overview of:

- the proposed site layout
- building designs and elevations
- how you can provide feedback
- how to contact us for more information.

Project overview

Enrolments at Kingscliff Public School have grown significantly over the past decade. The current school doesn't have enough permanent teaching spaces to meet this demand and 14 classrooms are accommodated in demountable buildings.

The proposed upgrade will provide students with access to innovative learning environments that enable contemporary teaching and learning practices. It will improve core facilities and provide a variety of open spaces for structured and recreational play.



32 new permanent innovative and flexible learning spaces



New play spaces and outdoor amphitheatre



Extended school hall

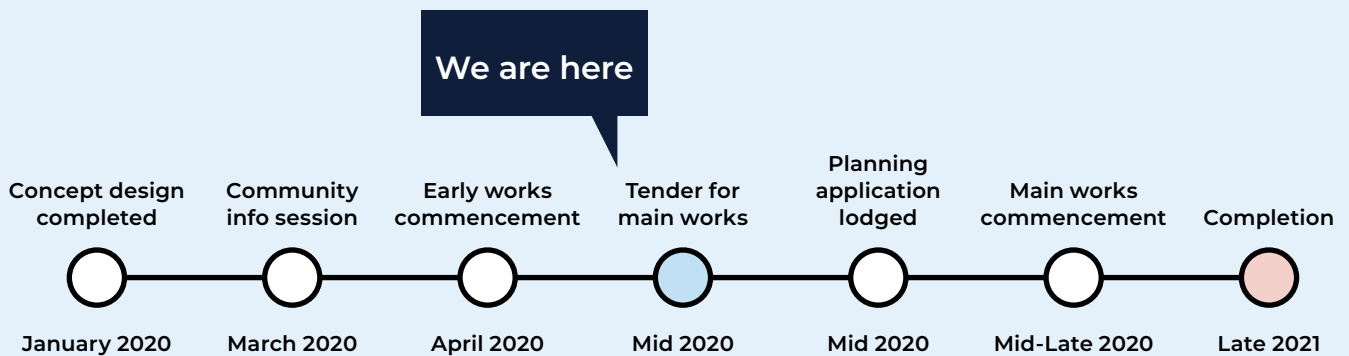


New library



Redeveloped school entry

Timeline



Progress summary

Concept designs for the Kingscliff Public School upgrade were endorsed by the Project Reference Group in early 2020 and presented to the community at an information session in March. Schematic designs and detailed plans for the upgrade have now been finalised in consultation with the Kingscliff Public School principal, staff and other school users. Early works commenced at the school in April 2020 to extend the existing hall and provide a new canteen. These works are being delivered while design and planning work continues to progress the broader upgrade.

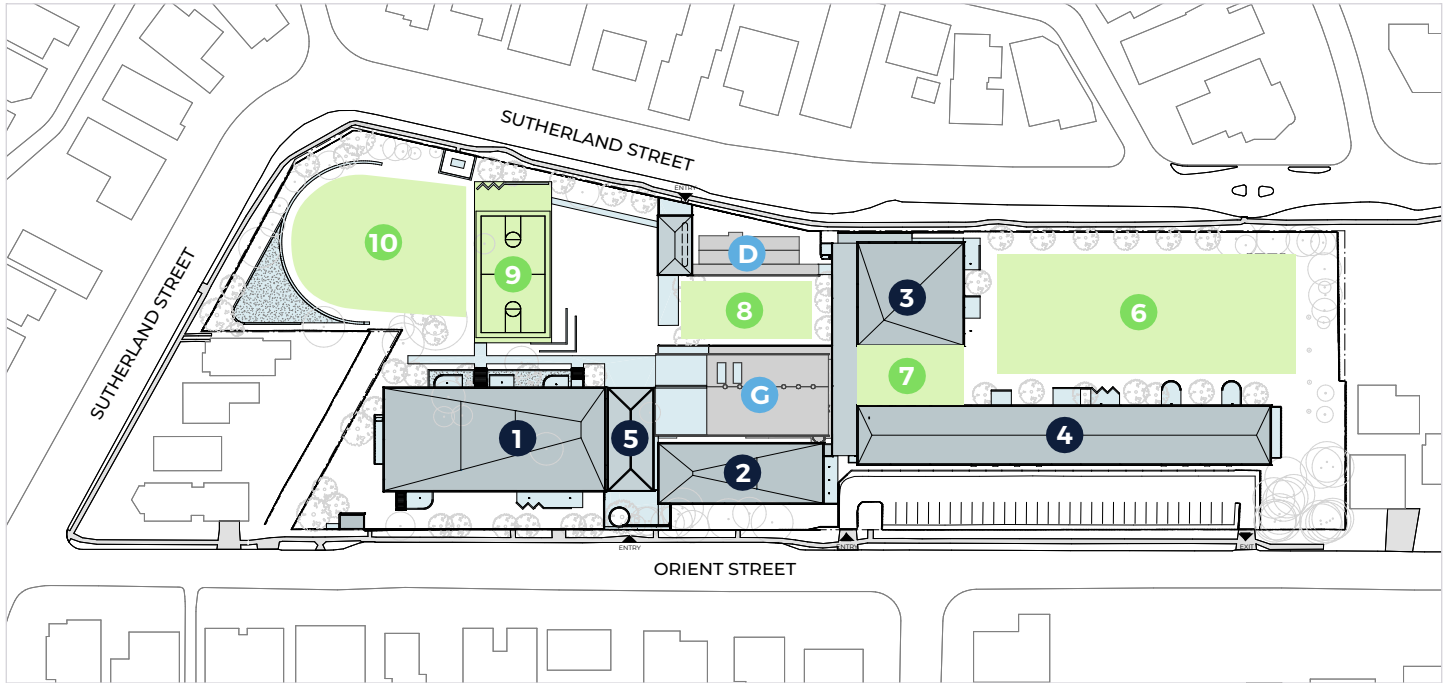
Next steps

The planning pathway for the project is currently being finalised. The school and local community will be notified once the relevant submissions have been lodged and will have the opportunity to provide feedback through the planning process.

The tender for main works will be issued in mid 2020. Main works will commence once a contractor has been engaged, subject to planning approval.

Proposed site plan

The proposed site plan offers a more functional and better connected layout. It enables the required increase in permanent learning spaces as well as providing an expanded hall able to accommodate the whole school population, a new library, a more visually appealing and practical street entry and a variety of open spaces for learning, play and sport.



New infrastructure

Four new buildings are proposed to accommodate a new library, new administration and staff spaces and 32 new innovative learning spaces.

- 1 Two-storey building with a new library, one special programs room and four learning spaces on the ground floor and eight learning spaces on first floor
- 2 Single-storey staff and administration building
- 3 Two-storey building with six learning spaces
- 4 Two-storey building with 14 learning spaces and two special programs rooms
- 5 Covered outdoor learning area (COLA) over new school entrance on Orient Street

Existing infrastructure

- D Existing amenities block
- G Extended hall including new canteen

Outdoor spaces

The proposed design will provide a much needed variety of open spaces that can be used for different purposes, at different times.

This is a key priority for the school as it will provide improved facilities for physical education classes and offer students of all ages with play-time choices, including the oval for active play, a hard court for ball sports and smaller areas for quiet play.

- 6 Approximately 2,000 square metres of open, grassed oval space
- 7 Outdoor amphitheatre connecting the upper and lower parts of the school
- 8 Open, grassed play space
- 9 Multi-sports, hard surface playing court
- 10 Open play space with play equipment on the perimeter

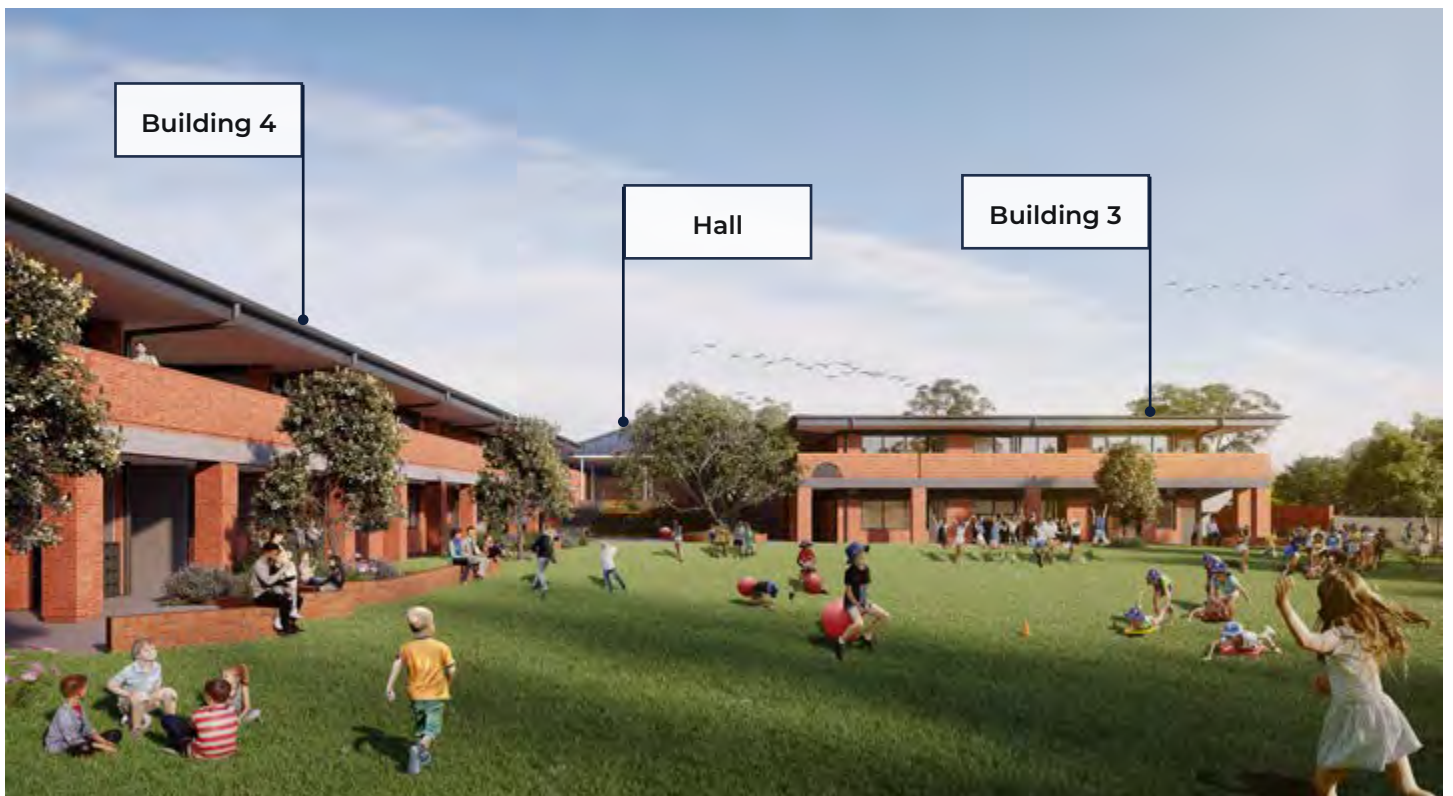
Artist impressions

The images below provide an indication of how the future school will look from different vantage points. They provide an indication of the colour palette and materials which will be used.

View from the west towards the new main school entry from Orient Street



View from the southern boundary across the oval towards the centre of the school



Design process

The scope of work and design for the Kingscliff Public School upgrade was developed based on a range of factors including assessment of population and enrolment data, school requirements, current trends in education and learning, existing infrastructure, available funding, as well as the size and physical constraints of the school site.

Workshops were held with the school executive, teaching staff, students and parents to understand current challenges and constraints and identify future requirements.

Designing a school that will deliver the required increase in learning space while also accommodating an extended hall, a new library, an oval and minimum open space requirements has been challenging, particularly given the usable space constraints at the site and approved funding.

A number of different approaches were considered during the master planning process and the current design was chosen because it allowed us to meet the minimum requirements for future focused teaching and learning spaces coupled with a range of outdoor spaces for learning and play.

Orient Street streetscape

The school upgrade has been designed to respond to and contribute to the visual appeal of the existing built form.

Where possible two-storey buildings have been designed to be built into the fall of the land to minimise visual impact. Roof pitches have been kept low and all new buildings will be within Tweed Shire Council's allowable building heights.



Looking northeast along Orient Street towards the school entry

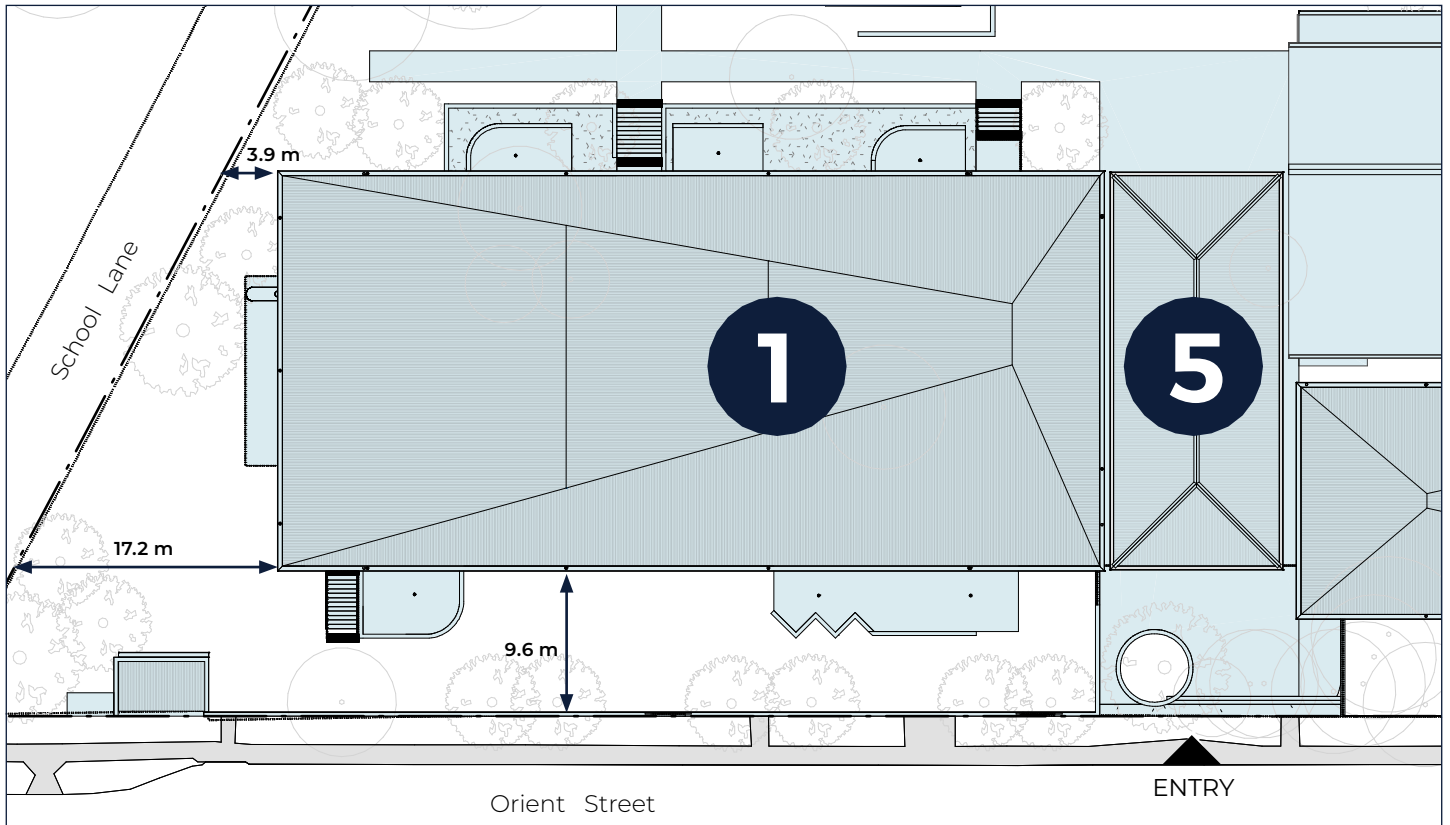


Building designs

The plans, drawing and elevations on the following pages provide information about the location, size and height of each building.

Building 1

Building location



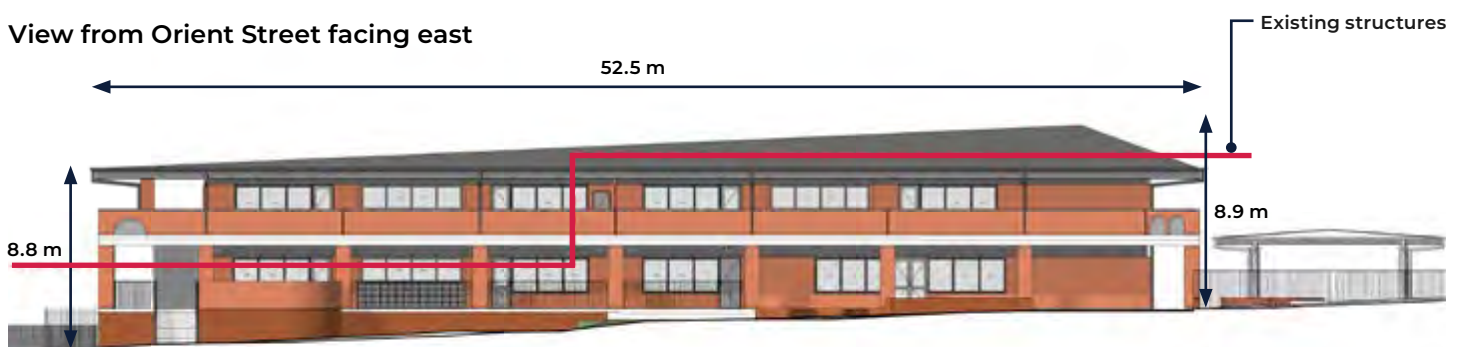
View from School Lane facing south



Building 1 is proposed to be constructed in the northwest corner of the site. This area currently houses a number of demountable buildings and the north wing of the existing two-story building.

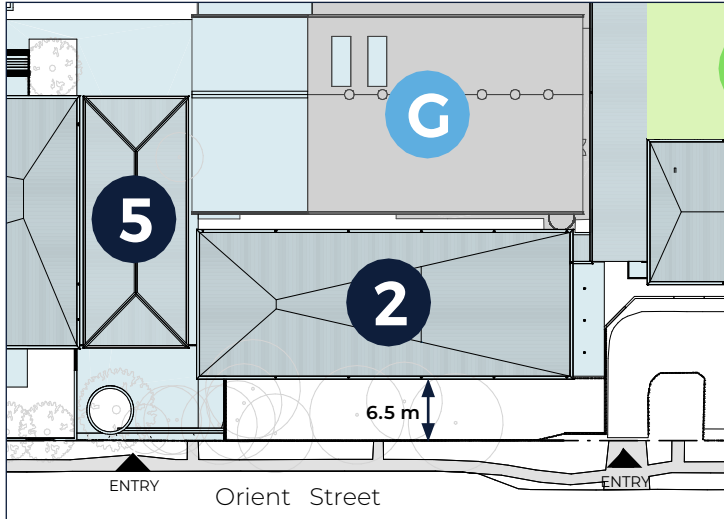
The northern end of the building will feature privacy screens and tree plantings to maintain privacy for homes to the north of the site.

View from Orient Street facing east



Building 2

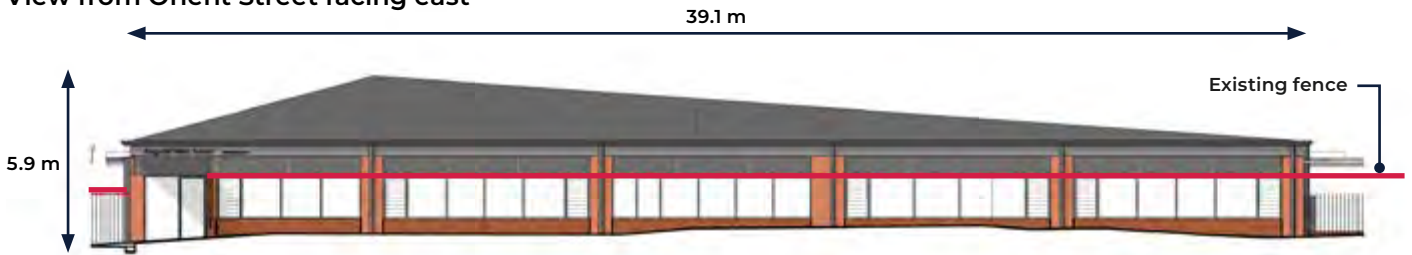
Building location



Building 2 is proposed to be constructed to the right of the new school entry which will be relocated approximately 20 metres south of the existing main school entry on Orient Street. This area currently houses three demountable buildings.

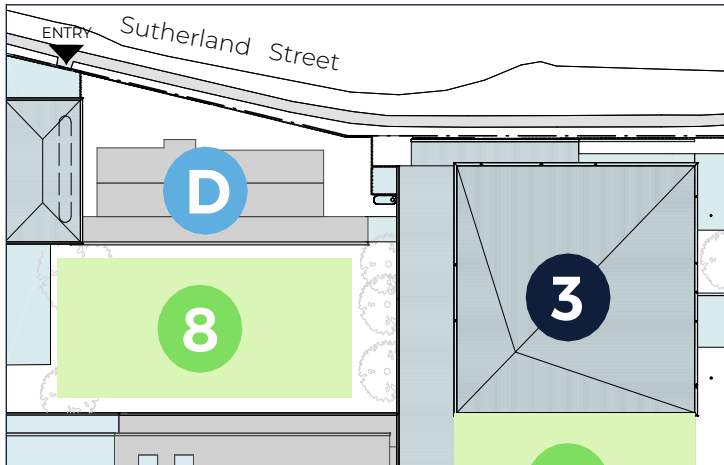
This building will provide a required increase in office and staff spaces and also an improved reception area for the public. At its highest point, Building 2 will be 1.2 metres lower than the roofline of the existing hall.

View from Orient Street facing east



Building 3

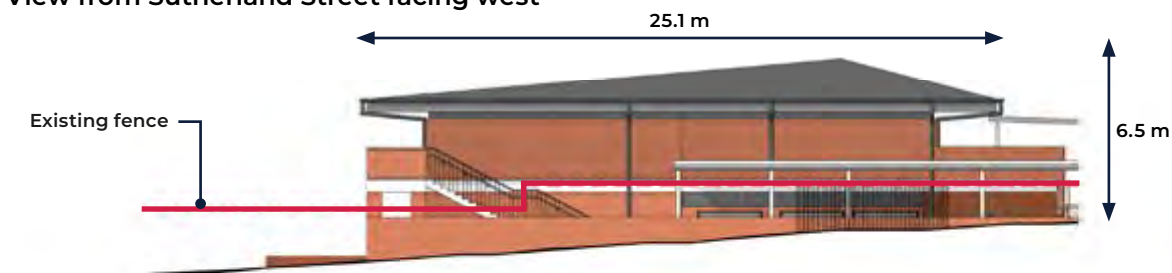
Building location



Building 3 is proposed to be constructed to the south of the existing pedestrian entry from Sutherland Street. The entry will be improved through the addition of a new covered entry pavilion and bike storage.

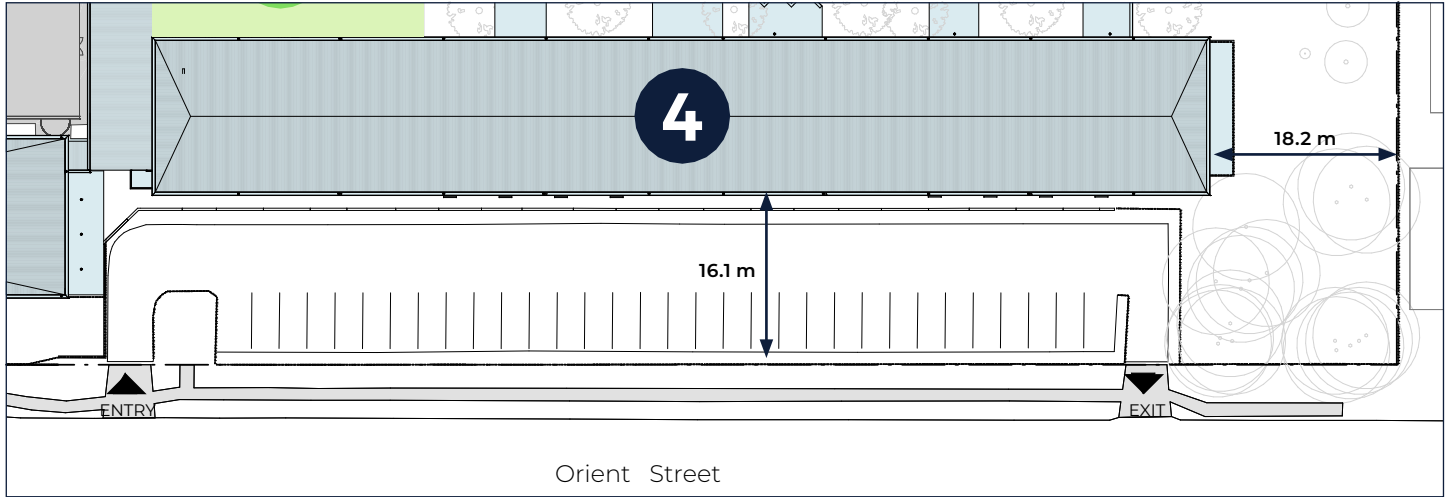
Building 3 will accommodate six innovative and flexible learning spaces over two levels and will be built into the slope of the land.

View from Sutherland Street facing west



Building 4

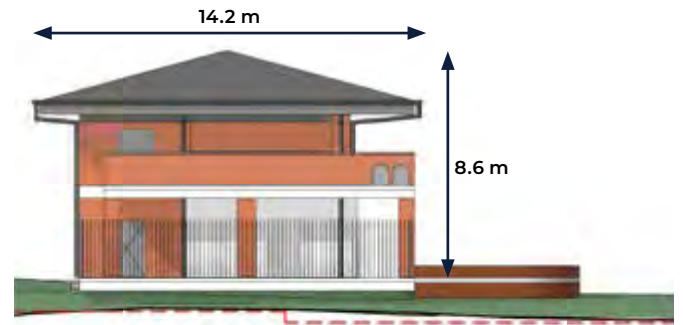
Building location



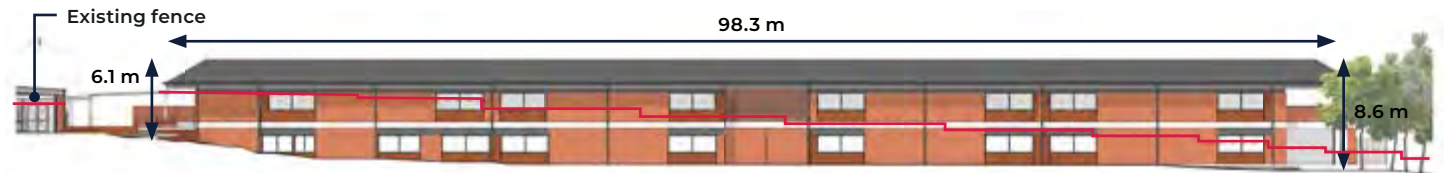
View from southern boundary facing north

Building 4 will be the main classroom building for the school. It will provide 14 innovative and flexible learning spaces and two special programs rooms over two floors.

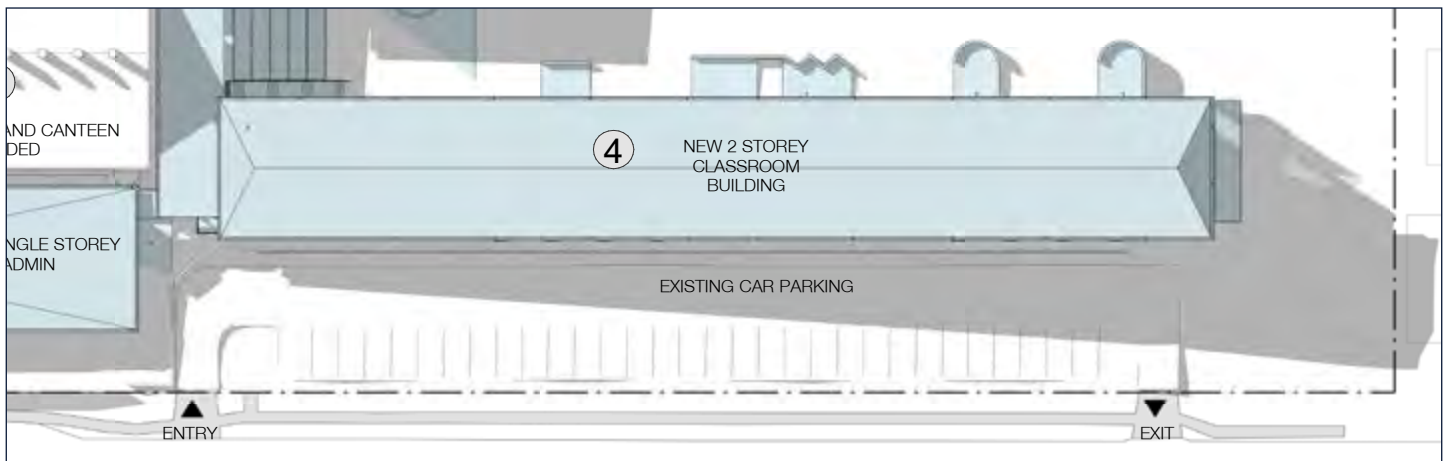
A two-storey building enables us to provide the increase in learning space required to meet current and future requirements while still maintaining an adequate amount of open grassed area.



View from Orient Street facing east



Shadow diagram – 9am winter solstice



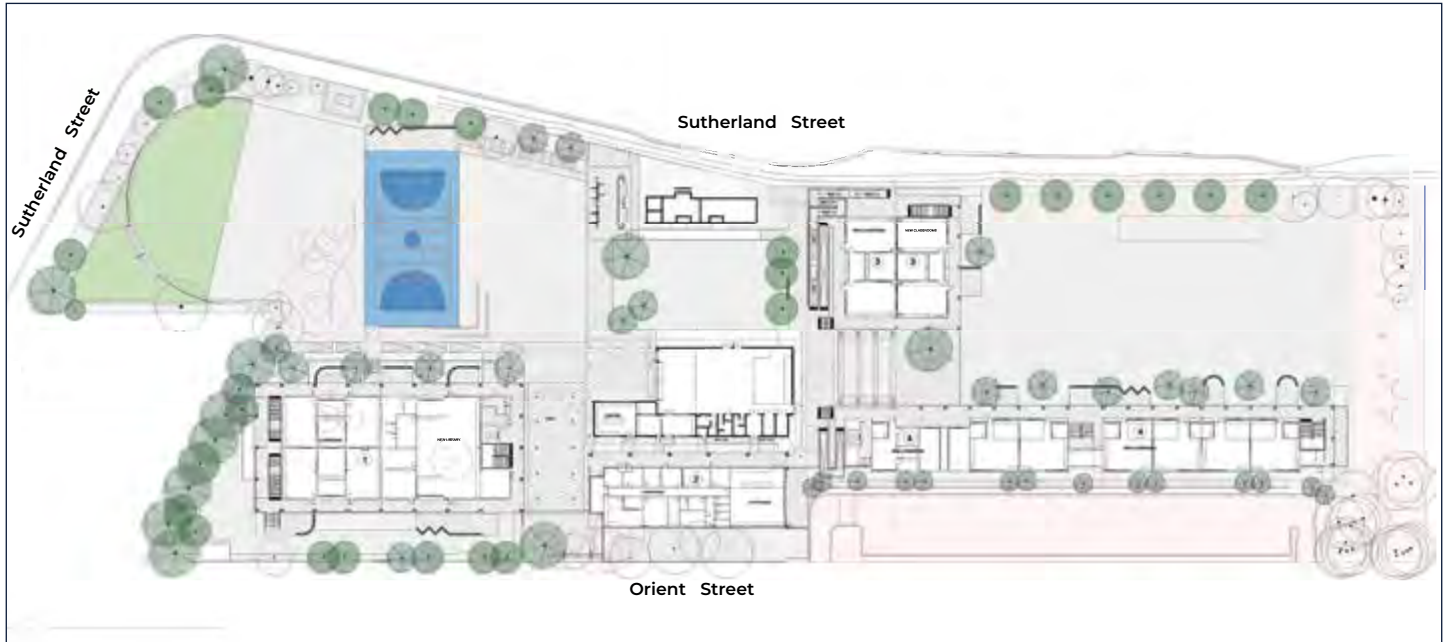
Buildings have been located and designed to minimise shading impacts.

This drawing shows the shadow of Building 4 at 9am when the sun is at its lowest winter level. At other times the shadow falls within the school boundary.

Landscaping

The new landscape plan retains mature trees to the north, west and south of the property, supplemented with new trees and plantings along both Sutherland and Orient Streets. Screen planting is also provided to the north of Building 1, creating a visual screen to the northern neighbours.

A variety of open play and outdoor spaces encourage students to connect with the natural environment, and promote the value of outdoor spaces as progressive learning environments.



Construction

Further details regarding construction including staging, work hours, transport management, and work health and safety, will be provided once a main works contractor has been engaged and a Construction Management Plan has been developed and approved.

Staging

Construction will be staged to enable the school to remain on site while new infrastructure is being built.

The first phase of construction is expected to take place in open space so the school can continue to operate in existing buildings. Once new buildings are completed the school will move into those areas allowing old infrastructure to be demolished.

This staged approach will reduce overall construction time, minimise disruption to school operations and allow us to deliver the best school possible with the available funding.

Hours of work

The hours of work for the project are expected to be consistent with standard construction working hours. No work will take place on Sundays or public holidays unless notified. Approved working hours will be advised prior to commencement of the main works and the community will be kept informed of any changes to approved working hours.

Site safety

The health and safety of the community is our highest priority. Temporary fencing will be installed around construction sites to secure the area and prevent public access. SINSW and its contractors will meet regularly with the principal to identify and manage any potential safety risks.

Traffic management

A Transport Management Plan is being prepared for the project. Traffic management will be in place where required for the safety of students, staff and the local community. Arrangements will be put in place to ensure the safe entry, exit and parking of construction vehicles.

Noise and dust

Our contractor will implement dust and noise control in accordance with the approved Construction Management Plan. Dust will be minimised with shade cloth and controlled by spraying water during earth works as required.

Frequently asked questions

Why does Kingscliff Public School need an upgrade?

Kingscliff Public School doesn't have enough permanent classrooms to meet current demand for student places and 14 classrooms are currently accommodated in demountable buildings. The population of Kingscliff is growing and this is forecast to place further pressure on education infrastructure.

Existing infrastructure and facilities were built in the 1950s, 60s and 70s and no longer meet the learning, recreation and administration needs of the school. In addition, existing buildings are not suitable for refurbishment or conversion to innovative learning environments due to their size, structure and lack of integrated technology.

How were the designs for the upgrade developed?

The concept design for the upgrade was developed based on a range of factors including assessment of population and enrolment data, school requirements, current trends in education and learning, existing infrastructure, available budget, as well as the size and physical constraints of the school site.

Workshops were held with the school executive, teaching staff, students and parents to understand current challenges and constraints and identify future requirements.

When will construction start?

Early works commenced at the school in April 2020 to extend the existing hall and provide a new canteen. It is expected that main works will begin in the second half of 2020, pending development approval.

We will keep you updated on these timeframes as approval is given and the project progresses.

What is the planning and approval process for the project?

Early works are being delivered as a complying development. The planning pathway for the remainder of the upgrade project is yet to be finalised. Once that is determined we will commence the lodgement process with the relevant planning authority and provide further information to the community.

What is being done to improve road safety around the school?

Keeping roads around our schools safe is a responsibility that is shared between the Department of Education, local councils, schools, parents and students, law enforcement, transport providers and Transport for NSW.

We are working with a transport consultant to understand how students and teachers travel to school at the moment and what impact the upgrade will have on vehicle movements. This information will help us finalise our Transport Management Plan for the project.

The Transport Management Plan will include strategies for improving how the existing drop-off zone operates and the school is also working with parents, students and bus operators to encourage safer behaviour.

What changes will be made to parking?

Off-street parking is available at the school and this will be maintained.

How will you keep the community informed?

We will continue to keep the school and local community informed through project updates, school newsletters, website updates and other information.

Stay informed



Website

Stay up to date by visiting the School Infrastructure NSW website schoolinfrastructure.nsw.gov.au



Email

Contact the Community Engagement team by emailing schoolinfrastructure@det.nsw.edu.au



Phone

Contact us between 9am and 5pm, Monday to Friday on **1300 482 651**