

# Investing in our schools

A project is underway to upgrade Kingscliff Public School to cater for future growth in the area.

The upgrade will include:



32 new permanent innovative and flexible learning spaces



New play spaces and outdoor amphitheatre



Extended school hall



New library



Redeveloped school entry



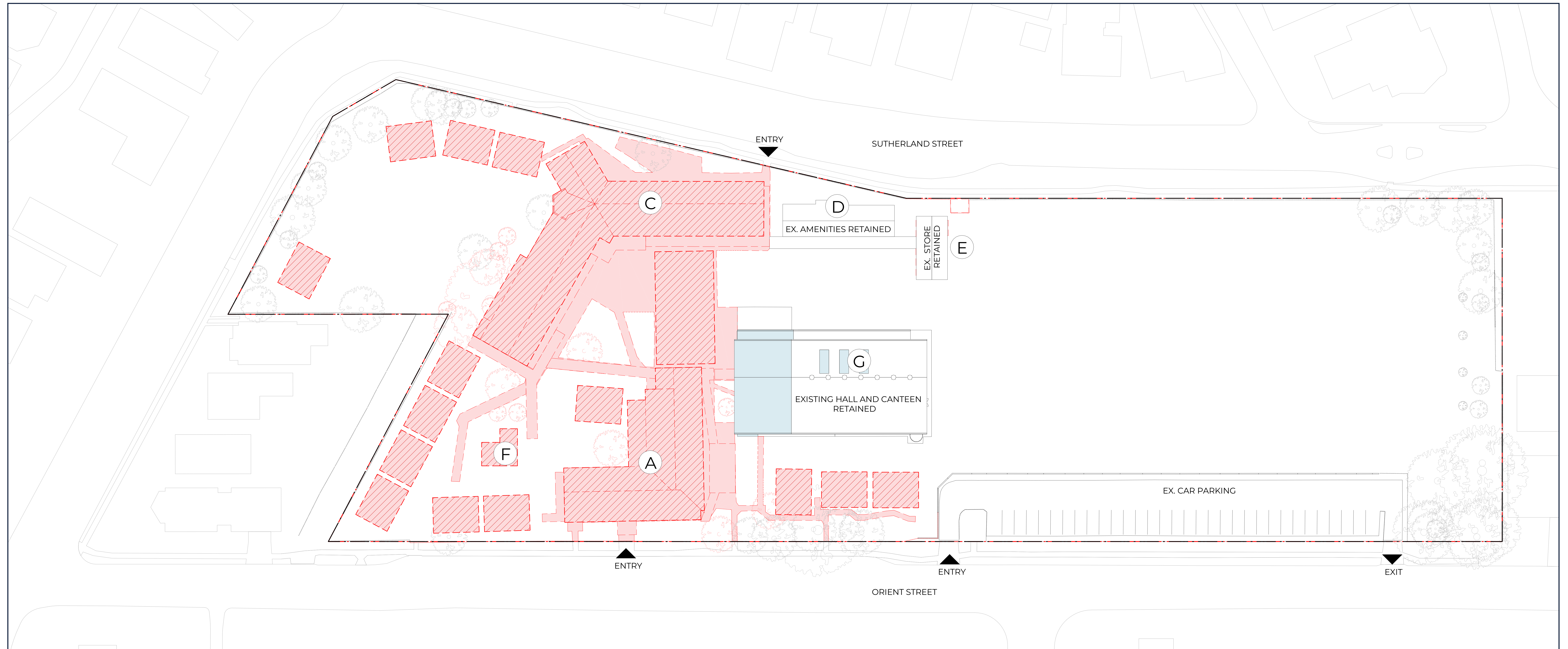
Artist impression of the Kingscliff Public School upgrade

## Kingscliff Public School upgrade

For more information phone: 1300 482 651  
Email: [schoolinfrastructure@det.nsw.edu.au](mailto:schoolinfrastructure@det.nsw.edu.au)



# Existing school

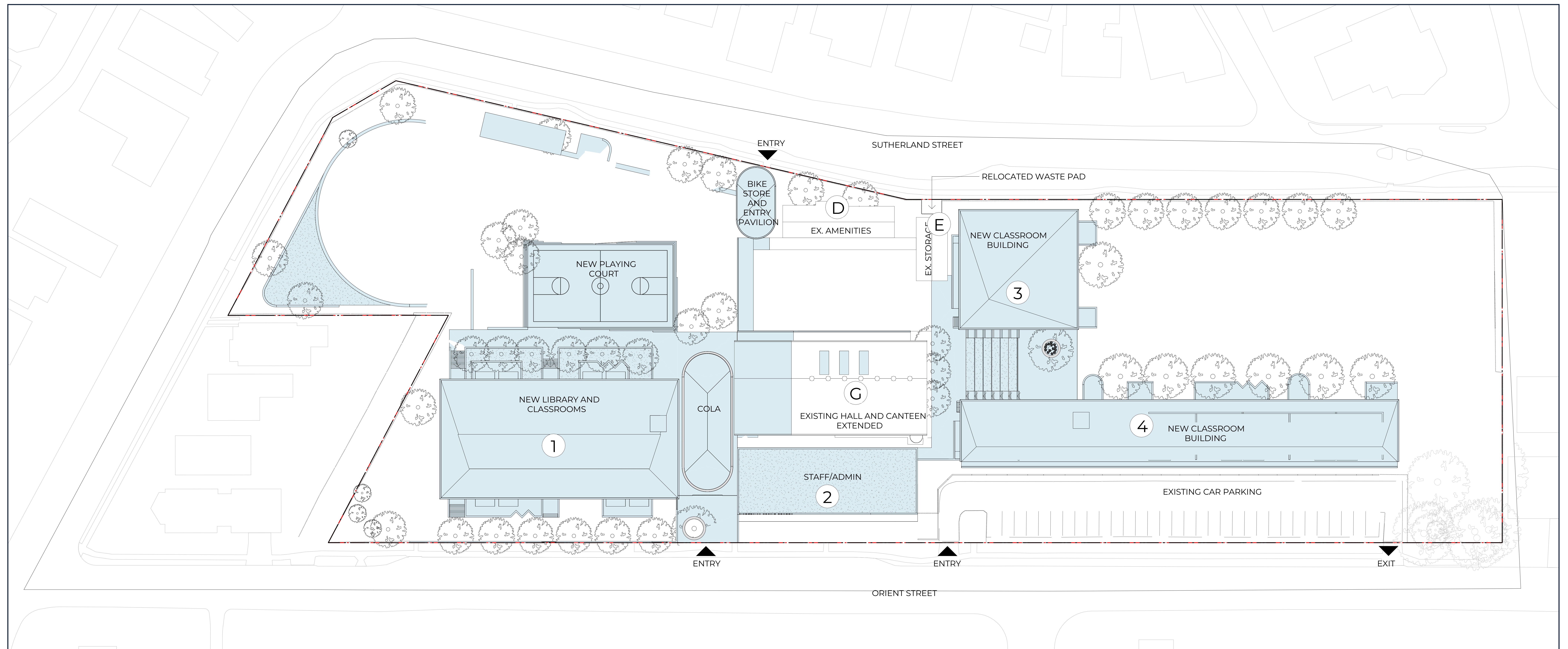


## Kingscliff Public School upgrade

For more information phone: 1300 482 651  
Email: [schoolinfrastructure@det.nsw.edu.au](mailto:schoolinfrastructure@det.nsw.edu.au)



# Proposed site plan



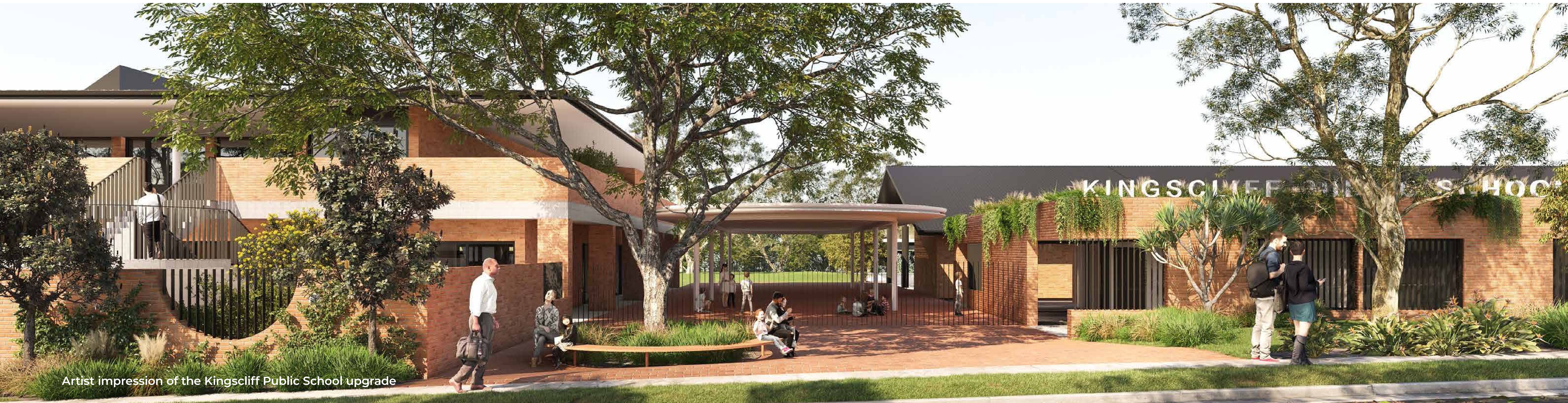
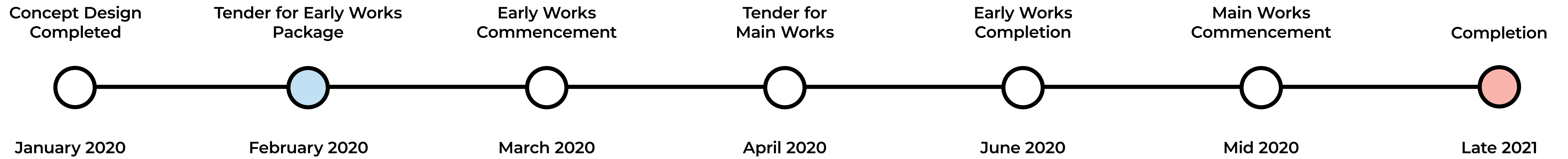
## Kingscliff Public School upgrade

For more information phone: 1300 482 651  
Email: schoolinfrastructure@det.nsw.edu.au



# Timeline

We are here



## Kingscliff Public School upgrade

For more information phone: 1300 482 651  
Email: [schoolinfrastructure@det.nsw.edu.au](mailto:schoolinfrastructure@det.nsw.edu.au)



# Consultative design

The Kingscliff Public School upgrade will deliver 32 new permanent innovative learning spaces.

The new library will also feature a variety of study, teaching and learning spaces that have the potential to open onto an outdoor terrace and garden.

Workshops were held with staff, students and parents to ensure that all spaces meet the educational and service delivery requirements of the Kingscliff Public School community.



An example of an innovative learning environment

## Kingscliff Public School upgrade

For more information phone: 1300 482 651  
Email: [schoolinfrastructure@det.nsw.edu.au](mailto:schoolinfrastructure@det.nsw.edu.au)



# What are innovative learning spaces?

Our children's education is vital – they are the next leaders, the future workforce and the foundation of communities for generations to come.

Innovative learning prepares students across all curriculum areas and learning stages with skills and capabilities to thrive in a rapidly changing and interconnected world. It connects students, engages their sense of curiosity, and allows flexible, technology-rich spaces for one-to-one, small group and whole class activities. Innovative learning fosters collaborative learning between students and teachers.



## Space

- There are zones for different activities, with varied furniture and resources – such as booths, standing tables, studios and bean bags.
- Spaces can be connected by glass or sliding doors with furniture in corridors and on balconies to extend the learning space.
- No front of classroom.
- Spaces are designed to be shared by multiple classes.



## Students

- Students have the ability to move around the learning space to encourage collaborative learning.
- Students working across a range of projects simultaneously.
- Students engaged in hands on learning, building and testing.



## Teachers

- Movement around the learning space rather than the teacher being at the front of the room.
- Teachers plan learning together, for example in stage or faculty teams.
- Teachers teaching together to better meet the needs of students.



## Learning

- Personalised learning, so each student is learning at their own level and pace.
- Students learning in large groups, small groups or individually.
- Students are working towards the same project in different subject areas, encouraging cross disciplinary learning.



## Technology

- Technology integrated into the space to extend learning.
- Accessibility of technology to suit different activities at point of need, for example filming and recording equipment.
- WiFi accessible across all learning areas.