



Artist impression of the Kingscliff Public School upgrade

# Kingscliff Public School

Information pack | May 2023

The NSW Department of Education is committed to delivering new and upgraded schools for the communities across NSW. The delivery of these important projects is essential to the future learning needs of our students and supports growth in the local community.

## Project overview

We are upgrading Kingscliff Public School to provide new permanent teaching spaces and core facilities.



**32** new permanent innovative and flexible learning spaces



Extended school hall



New library



New play spaces



New administration building



Redeveloped school entry

# Progress summary

---

## Completed works

The extension to the existing school hall, new out of school hours care (OSHC) facilities, new canteen, and new Administration building are all complete. The hall is now able to accommodate the entire student population and the school has been able to establish an OSHC service.

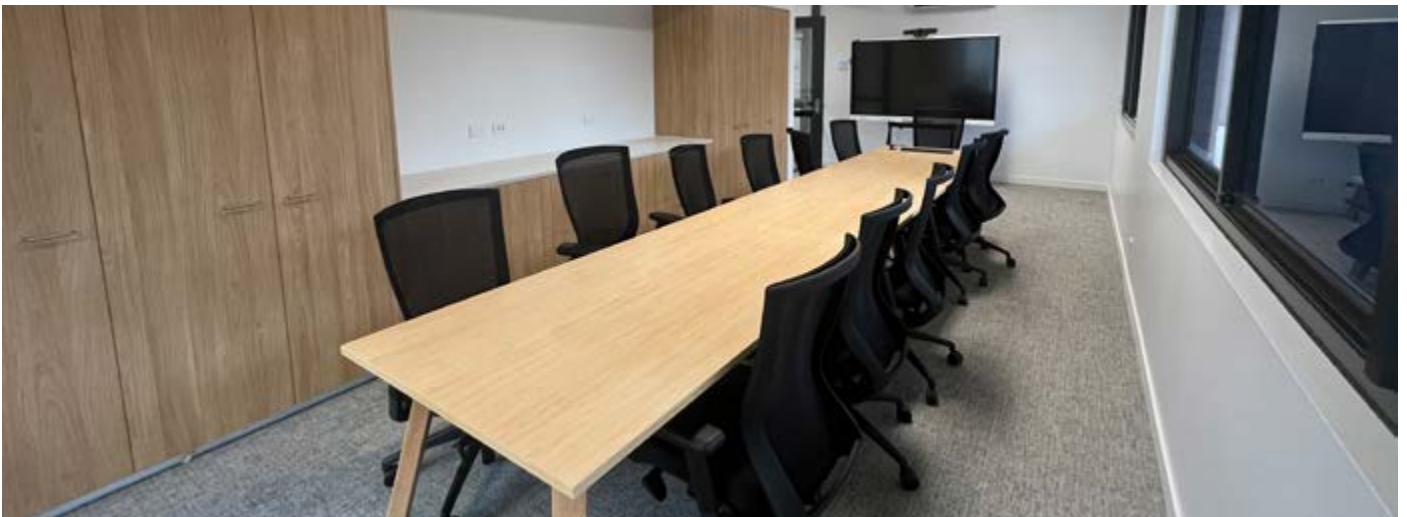
The new Administration building provides bright new facilities such as office spaces, meeting rooms and an accessible front office.

## Statutory planning

Due to the level of investment involved, the Kingscliff Public School upgrade is considered a State Significant Development (SSD) and therefore the NSW Department of Planning and Environment (DPE) will assess the development application for the project. The SSD was approved by DPE in February 2022.

A planning modification is currently under assessment with DPE.

All planning and compliance documents are available to the public on the School Infrastructure NSW Kingscliff Public School project webpage at [edu.nsw.link/KPSupgrade](https://edu.nsw.link/KPSupgrade).



New administration building – conference room

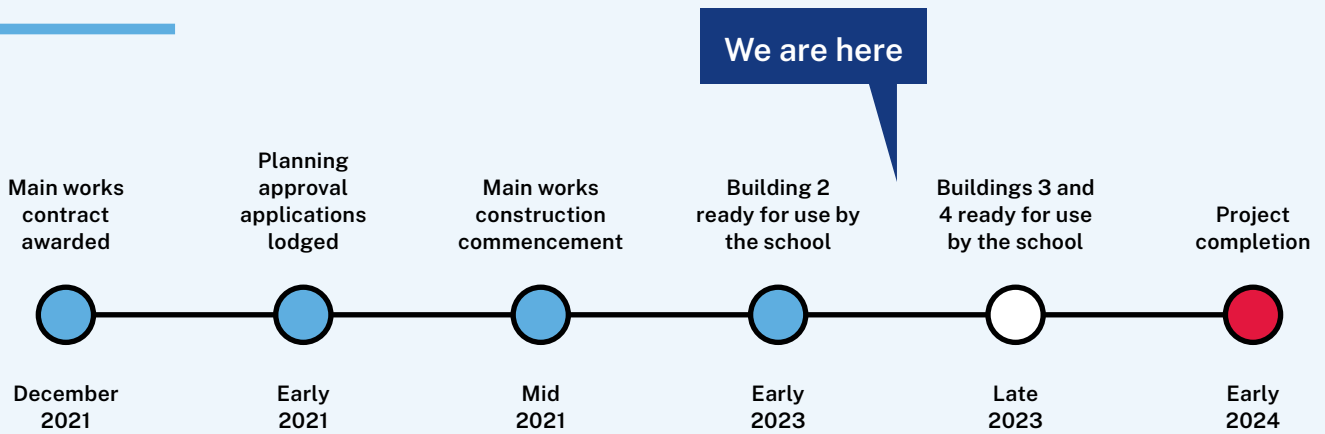


New administration building – front office

# Project schedule

In May 2022, we updated the community that the works to upgrade Kingscliff Public School have been impacted by the floods in Northern NSW. While the school was not directly impacted by floodwaters, the flooding in Northern NSW had a considerable impact on our work in the region, reducing capacity and increasing demand in the construction industry. Our contractor has now revised the program of works for the remainder of the upgrade.

## Timeline



The updated anticipated completion dates for the buildings / project are as follows:

Facility	Completion date
Building 2 – new administration building	Completed early 2023
Buildings 3 and 4 – new teaching blocks	Late 2023
Building 1 – new library and learning spaces	Early 2024
Official opening	Early 2024

The upgrade to Kingscliff Public School is being delivered progressively so that the school can remain operational on the current site during construction and so that facilities can be made available to the school as soon as possible.

## 2020 Early works

Completed in November 2020 and in use by the school:

- extended school hall
- new OSHC facilities
- new student canteen.

## 2023

Ready for use by the school in early 2023:

- new administration building.

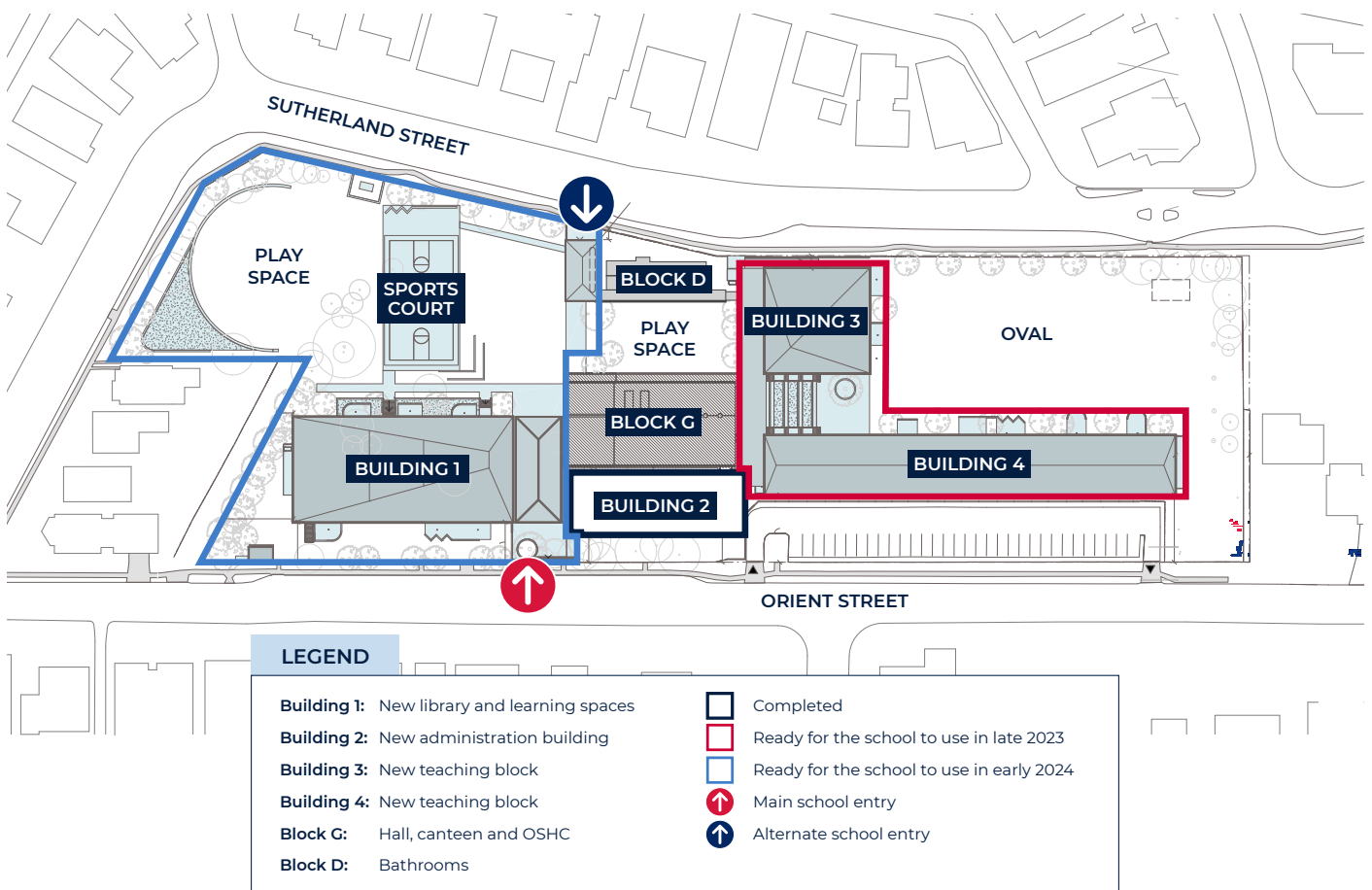
Ready for use by the school progressively from late 2023 and early 2024:

- new learning spaces in Buildings 1, 3 and 4
- new library
- redeveloped main entrance including covered outdoor learning area
- redeveloped secondary entrance including covered bicycle parking
- new sports court
- landscaping.

## Site plan

The site plan below shows all the development proposed at the site as well as the indicative construction timing. It reflects the designs that were approved as part of the State Significant Development Application.

The design of the upgrade offers a more functional and better-connected layout for the school. It enables the required increase in permanent learning spaces and provides a new library, a more visually appealing and practical street entry, and a variety of open spaces for learning, play and sport.



# New buildings

---

The scope of work for the upgrade includes construction of four brand new, architecturally designed buildings in addition to the redevelopment of school entries and landscaping.

## **Building 1 is a new teaching block which will include:**

- a new, centrally-located library on the ground floor
- 12 new, permanent, innovative learning spaces including practical activities areas
- a special programs room
- new student bathrooms
- a lift connecting the levels
- access to new outdoor learning areas directly from ground floor learning spaces
- covered walkways.

## **Building 2 will locate administration and staff spaces close to the main school entry to improve oversight of pedestrian movement and security around the school. The building will include:**

- the school's front office and administration spaces
- Principal and deputy principal's offices
- staff rooms and amenities with access to an external courtyard
- interview rooms
- sick bay.

## **Building 3 is a new teaching block which will include:**

- six new, permanent, innovative learning spaces
- sports storage space
- access to new outdoor learning areas directly from ground floor learning spaces
- covered walkways.

## **Building 4 is a new teaching block which will include:**

- 14 new, permanent, innovative learning spaces including practical activities areas
- two special programs rooms
- new student bathrooms
- grounds assistant workshop and storage
- a lift connecting the levels
- access to new outdoor learning areas directly from ground floor learning spaces
- covered walkways.

# Transport

The NSW Department of Education is committed to playing its part in keeping roads and footpaths around our schools safe. This is a responsibility that is shared between the department, local councils, schools, parents and students, law enforcement, transport providers and Transport for NSW.

As part of the Kingscliff Public School upgrade, we have been working with a transport consultant to understand how students and teachers travel to and from school and what impact the upgrade will have on vehicle movements.



**31%**

of students live within a 15 minute walk of the school



**81%**

of students live within a 15 minute ride of the school



**96%**

of students live within 400m of a bus route



**58%**

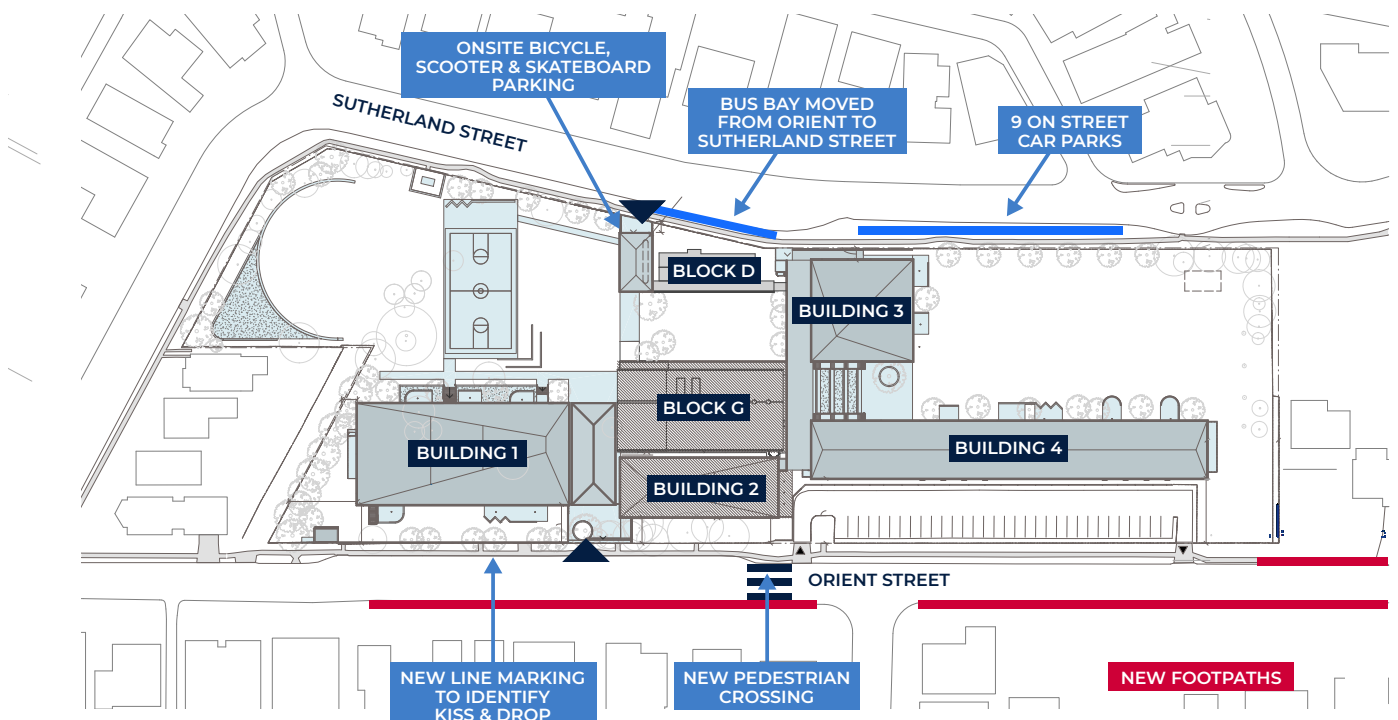
of students travel to school by private car

## School Transport Plan

We have prepared a School Transport Plan (STP) which sets out the strategies to deliver efficient, safe and sustainable access to the school during the planning and delivery of the project and beyond. The STP is lodged with the State Significant Development Application but is a live document that will continue to evolve as we continue to work with the school and stakeholders.

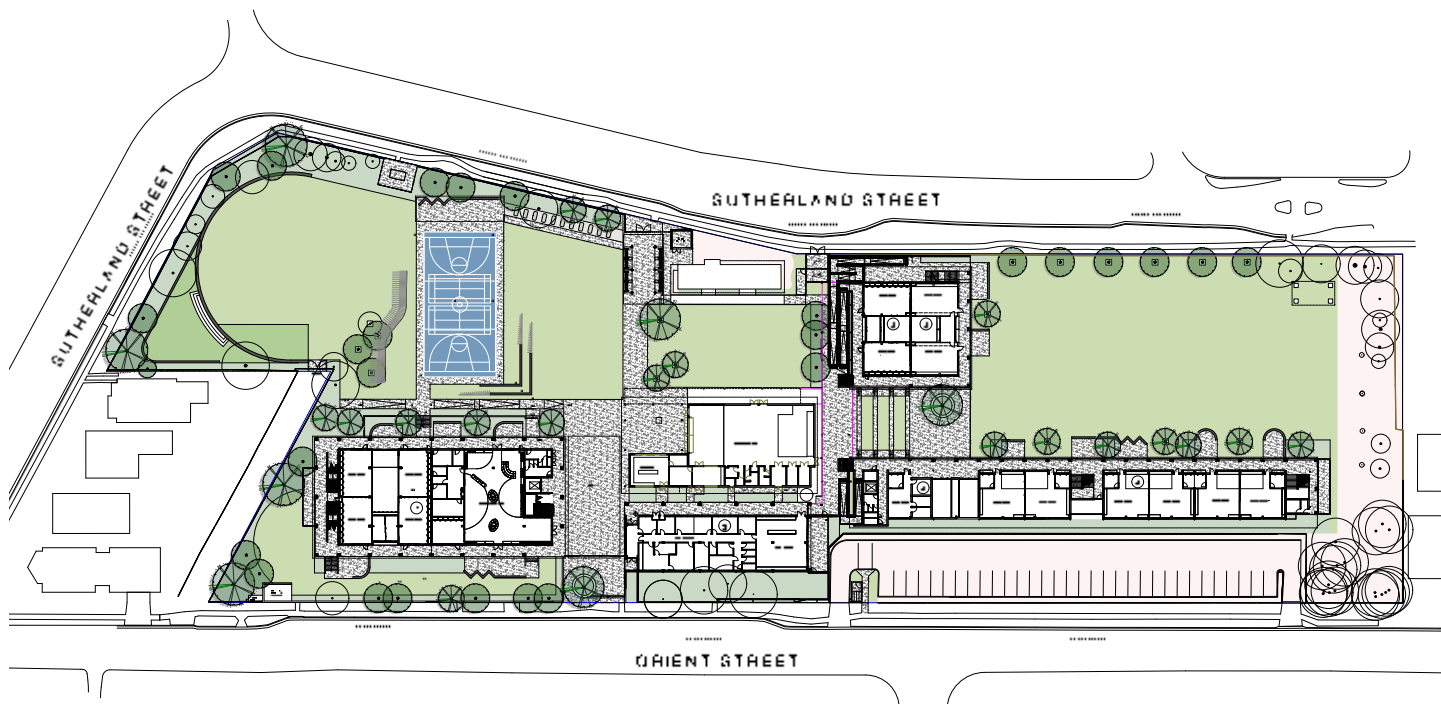
## Proposed transport infrastructure

With many students living within walking, cycling or scooting distance of the school, the upgrade will deliver a new covered bike, scooter and skateboard parking area to encourage more active journeys to and from school. Additional footpaths and a new school pedestrian crossing will make walking safer.



# Landscaping

The upgrade will deliver significant improvements to outdoor spaces, providing a variety of green areas for active play, quiet recreation and sport. Existing trees and the green buffer zone will be retained along the southern boundary and additional trees will be planted on either side of the oval. The north eastern corner will be transformed to include a grassed space, sports court and culturally significant landscaping.



# Next steps

## Construction

Construction works are continuing on buildings 3 and 4.

## Frequently asked questions

---

### Where is the development application for the project up to?

The State Significant Development Application (SSDA) was approved by DPE in February 2022.

A planning modification is currently under assessment with NSW DPE.

### What has caused a delay in the completion dates?

Kingscliff Public School works have been impacted by the floods in Northern NSW. While the school was not directly impacted by floodwaters, the flooding in Northern NSW had a considerable impact on our work in the region, reducing capacity and increasing demand in the construction industry.

### What is being done to improve road and pedestrian safety around the school?

As part of the Kingscliff Public School upgrade project, we have conducted a transport assessment to identify the challenges and opportunities associated with student travel to and from school. We have also engaged with Tweed Shire Council and Transport for NSW to identify ways we can work together to deliver improvements.

The SSDA for the project includes a number of proposed changes to transport infrastructure including a new school pedestrian crossing, additional footpaths and parking for bikes, skateboards and scooters, additional line marking and sign posting. Infrastructure is only part of the solution, and we will continue to work with the school and stakeholders to identify operational and behaviour change initiatives to improve road and pedestrian safety. The building contractor has developed a Construction Transport Management Plan and will be held accountable for safe movement of construction vehicles during building. We will keep the community informed of any temporary changes to road or pedestrian access arrangements.

## Contact us

---

For more information about this project, contact School Infrastructure NSW:

**Website:** [schoolinfrastructure.nsw.gov.au](https://schoolinfrastructure.nsw.gov.au)

**Email:** [schoolinfrastructure@det.nsw.edu.au](mailto:schoolinfrastructure@det.nsw.edu.au)

**Phone:** 1300 482 651

For information about school activities and operations, contact the school directly:

**Principal:** Diana Foley

**Website:** [kingscliff-p.schools.nsw.gov.au](https://kingscliff-p.schools.nsw.gov.au)

**Email:** [kingscliff-p.school@det.nsw.edu.au](mailto:kingscliff-p.school@det.nsw.edu.au)

**Phone:** 02 6674 1467