

---

# Kingscliff Public School

Photographic Archival Report

Prepared for Indigeco  
May 2022

---

DRAFT

EMM Sydney  
Ground floor, 20 Chandos Street  
St Leonards NSW 2065

T 02 9493 9500

E [info@emmconsulting.com.au](mailto:info@emmconsulting.com.au)

[www.emmconsulting.com.au](http://www.emmconsulting.com.au)

# Kingscliff Public School

## Photographic Archival Report

**Report Number**

E211254 RP1

**Client**

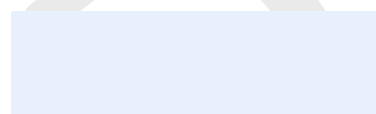
Indigeco

**Date**

12 May 2022

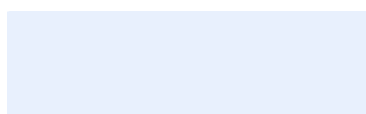
**Version**

v1 Draft

**Prepared by****Approved by****Kerry Armstrong**

Senior Archaeologist

12 May 2022

**Pamela Kottaras**

National Technical Lead - Historic Heritage

12 May 2022

This report has been prepared in accordance with the brief provided by the client and has relied upon the information collected at the time and under the conditions specified in the report. All findings, conclusions or recommendations contained in the report are based on the aforementioned circumstances. The report is for the use of the client and no responsibility will be taken for its use by other parties. The client may, at its discretion, use the report to inform regulators and the public.

© Reproduction of this report for educational or other non-commercial purposes is authorised without prior written permission from EMM provided the source is fully acknowledged. Reproduction of this report for resale or other commercial purposes is prohibited without EMM's prior written permission.

# Table of Contents

1	Introduction	2
2	Scope and methods	5
3	Photographic Archival Recording Context	8
4	Photographic image catalogue	14
5	References	16

## Appendices

Appendix A	Photograph contact sheet	A.1
Appendix B	Photographic base plans	B.1

## Tables

Table 2.1	Scope of works - PAR	5
Table 3.1	The nearest registered item within a 3 km radius of KPS	9
Table 3.2	NSW heritage assessment criteria	12
Table 3.3	Assessment of significance Kingscliff Public School	12

## Figures

Figure 1.1	Project location and heritage listings	4
------------	--	---

## Photographs

No table of contents entries found.

## Plates

Plate 3.1	Map of the First People of the Tweed Valley. Source: Tweed Regional Museum 2020.	10
Plate 4.1	Digital Image Catalogue Sheet	15

# 1 Introduction

## 1.1 Overview

Kingscliff Public School (KPS) has requested the removal the original 1957 school building (subject building) at 12 Orient Street, Kingscliff, NSW to make space for an additional school oval. In accordance with the Conditions of Consent (CoC) for the Kingscliff Public Redevelopment State Significant Development (SSD-8378620) an archival record must be completed prior to demolition. The archival report aims to capture the heritage significance of the original 1957 school building before demolition.

Indigeco has been engaged by School Infrastructure NSW to provide Photographic Archival Recording (PAR) to satisfy the management measures listed in the CoC. Indigeco has utilised our specialist services partner EMM Consulting Pty Ltd (EMM) to prepare this report.

## 1.2 Heritage management measures

This photographic archival report (PAR) has been prepared as per the recommendations provided by EMM Consulting (EMM) in the 2021 historic heritage assessment (EMM Consulting 2021, p. 36) and to address the Condition B11 of the CoC. The CoC is noted here:

### **B11. Heritage photographic archival recording**

Prior to the commencement of demolition of the Kingscliff Public School Building, a photographic archival record of the external and internal areas of the building and all other elements of significance on the site identified in the Historical Heritage Assessment prepared by Indigeco must be prepared in accordance with the NSW Heritage Branch guidelines titled Photographic Recording of Heritage Items using Film or Digital Capture. A digital copy must be submitted to Council, any relevant local studies collection in the locality and the Planning Secretary prior to the commencement of demolition of the Kingscliff Public School Building.

## 1.3 Site description

The focus of the PAR is the 1957 school building in the northern section of the Kingscliff Public School site ). Kingscliff Public School is located 12 Orient Street, Kingscliff, NSW within the boundary of Lot1/DP384195 in the Tweed local Government area (Tweed LGA), Parish of Cudgen, County of Rous.

## 1.4 Description of item

The 1957 Kingscliff Public School building is a double storey, weatherboard structure that extends in two originally linear in wings from a central point defined by a brick— the main entry structure. The roof of both wings is open gable with Marseilles roof tiles and connect at a single point. The main entry structure has a flat roof with a brick parapet. The structure sits on brick piers, approximately 1.3 m above the natural ground level. The cavity below the building's ground floor level is enclosed with both brickwork and timber slat panels.

The interior is accessed primarily through the main entry structure, via a concrete staircase. A second concrete staircase connected to the brick entry structure leads to a sliding window with the school signage above. Both staircases are framed by terraced, brick planters. Multiple other entryways provide access into the building are located on a number of other elevations to the building's wings.

A variety of both double hung, timber windows and metal sliding windows of varying sizes and forms occupy much of the surface area of all building elevations. Various awning structures and services have been applied to most elevations that are not original features and may have required interventions to structure. Much of the original mid-twentieth century building and associated features, including timber windows, have been retained and the building exhibits no notable or severe dilapidation.

DRAFT



Source: EMM (2021); DFSI (2017); GA (2011)

- KEY**
- Project area
  - Major road
  - Minor road
  - Named waterbody

Project area in the local context

School Infrastructure  
KPS Photographic Archival Report  
Figure 1.1



\\lemmsvr1\EMM\3\2020\2007\33 - HH\Kingscliff Schools\GIS\02\_Maps\G007\_LocalContextPS\_20210127\_01.mxd 27/01/2021

## 2 Scope and methods

### 2.1 Scope of works

Table 2.1 outlines the scope of works and where the information is contained within the PAR report

**Table 2.1** Scope of works - PAR

No.	Works	Section addressed
1	A brief historical overview of the items and associated events, sites, structures and people	Section 3.3
2	A description of the item	Section 1.4
3	Statement of heritage significance of the items and sites	Section 3.4
4	A photographic catalogue that lists and briefly describes selected photographs captured of the heritage items and sites	Section 4
5	an inventory of archival documents in the form of thumbnail/contact sheets that reference the catalogued items and sites listed	Appendix A
6	base plan drawings for individual items and sites that include: <ul style="list-style-type: none"><li>• numeric cross-references to catalogued photographs;</li><li>• names of the relevant features, structures, landscape elements and spaces; and</li><li>• a north point</li></ul>	Appendix B

### 2.2 Photographic method

#### 2.2.1 Guidelines

The archival recording was undertaken using the principles of *The Australian International Council on Monuments and Sites, Charter for Places of Cultural Significance* (also known as the *Burra Charter*, Australia ICOMOS 2013) and the New South Wales (NSW) *Heritage Manual* (Heritage Office 1996 with regular additions).

*The Burra Charter: The Australian ICOMOS charter for places of cultural significance* (ICOMOS (Australia), 2013) sets a standard of practice for those who provide advice, make decisions about, or undertake works to places of cultural significance including owners, managers and custodians. The *Burra Charter* defines the concept of cultural significance as ‘aesthetic, historic, scientific, social or spiritual value for past, present or future generations’ (Australia ICOMOS 2013, Article 1.2). It identifies that conservation of an item of cultural significance should be guided by the item’s level of significance. The Charter provides specific guidance for physical and procedural actions that should occur in relation to significant places. A copy of the charter can be accessed online at <http://icomos.org/australia>.

The Burra Charter consists of 34 articles, arranged into five sections: definitions, conservation principles, processes and practice. The principal articles of the Burra Charter are:

- Conservation is based on significance;
- A cautious approach is required – changing as much as necessary, but as little as possible; and
- Maintenance is fundamental to conservation.

These documents have been used to guide this the methodology for conducting the photographic recording.

### 2.2.2 Method

The photographic method aimed to capture information about the item in a systematic manner while emphasising the subject of the item. To ensure a comprehensive coverage of the historic heritage items and sites within the development area, several different types of images have been recorded. They include:

- external photographs of the subject building, prior to its removal;
- internal photographs of the subject building and covered spaces using an appropriate lens and including details of significant structural elements, as appropriate, together with any significant textures; and,
- contextual photographs showing the surrounding environment, landscape and views including, where applicable, photographs showing the relationship between the subject item and significant or non-significant items within the area and their immediate surroundings.

### 2.2.3 Technical specifications

The project area was photographed in colour using a 35 mm Single Lens Reflex (SLR) Canon EOS 200D digital camera. Photographs were taken in both RAW and JPEG format, both of which are to be provided with this report.

## 2.3 Base plan drawings

Base plan drawings have been produced using the most visually clear and available floorplans of the subject building and include circular markers with reference numbers related to the image catalogue and small arrows that point in the direction the photographs were taken. The marker locations are positioned as accurately as possible, but do not illustrate the exact location photographs were taken. The base plan can be found in Appendix B.

## 2.4 Lodgement of archival report

One (1) digital copy of the PAR is being provided and includes:

1. the archival report including catalogue/plan record sheets in digital PDF format;
2. a total of 164 thumbnails of the archivally recorded images provided in A4 PDF format;

Indigeco is to also provide a copy of the PAR to:

- Heritage NSW;
- Department of Planning and Environment;
- School Infrastructure NSW (for the S170 register); and
- Relevant local historical libraries or centres.

## 2.5 Inventory of archival documents

The following provides an inventory of known documents and other sources that reference the item/associated features:



- EMM Consulting, 2021. *Kingscliff Schools, historical heritage assessment*, prepared for Indigeco on behalf of School Infrastructure NSW.

## 2.6 Limitations

Due to the limitations imposed by the location of the subject building in an active school and scale of the item, some of the captured photographs depict surfaces in perspective, rather than as flat elevations and some may also depict human figures, equipment or various scale types. This does not affect the legibility of the recording.

## 2.7 Authorship

This report was prepared by Kerryn Armstrong (Senior Archaeologist) and Luke Kirkwood (Associate Archaeologist).

DRAFT

## 3 Photographic Archival Recording Context

This section provides a general description of the subject building, its heritage listings and significance, and a brief historical overview.

### 3.1 Description of existing environment

Kingscliff Public School is located in a suburban residential area of the Kingscliff village.

The school was established in 1957 and the first building was a winged weatherboard structure radiating from the main entrance (subject building). The subject building is located in the northern portion of the project area, along with the early years' playground and numerous demountable structures. This northern portion of the project area has been subjected to high degrees of ground disturbances including the ground level build up in the form of fill (Douglas and Partners, 2020).

The central portion of the project area was established from 1980s to 2010, the area has been substantially covered with buildings, courtyards and an undercover lunch area. Like the northern end, this part of the project area has been subject to high amounts of disturbance with fill reaching to approximately 600 mm deep fill (Douglas and Partners, 2020).

The southern end of the project area is occupied by the school sports oval. This area has also been subject to extensive earthworks, with the oval having been cut out and then layered with approximately 200 mm of fill.

The project area was inspected during the historical heritage assessment in 2021 and it was clear that substantial earthworks had been undertaken during the different phases of the school.

### 3.2 Heritage listings

A search of the following statutory and non-statutory heritage registers was undertaken for the 1957 Kingscliff Public School building:

- National Heritage List
- Commonwealth Heritage List
- State Heritage Register
- Tweed Local Environmental Plan 2014
- Roads and Maritime Services s170 Register
- Register of the National Estate
- National Trust Register

There are no listed items within the curtilage of the Kingscliff Public School. Table 3.1 indicates which heritage listed items are located within a 3 km radius of the subject building.

**Table 3.1 The nearest registered item within a 3 km radius of KPS**

Register	Register listing	Item number	Distance to KPS
NHL	No National Heritage sites are located within 3km of the project area	-	
CHL	No Commonwealth Heritage sites are located within 3 km of the project area	-	
SHR	There are no SHR items within 3 km of the project area	-	
S170	No S170 sites are located within 3 km of the project area	-	
Tweed LEP 2014	Amenities Hall	I31	440 m north
	Fig Tree Roundabout	I32	400 m north
	War Memorial Cenotaph	I33	490 m north
	Osprey nests as mapped from time to time by National Parks and Wildlife Service	I100	500 m north-east
	Cudgen Sugar Mill Remains (Archaeological remains)	A2	1.7km west
	War Memorial Cenotaph and Public School Rolls	I23	2.6 km west
RNE	No RNE sites are located within 3 km of the project area.	-	

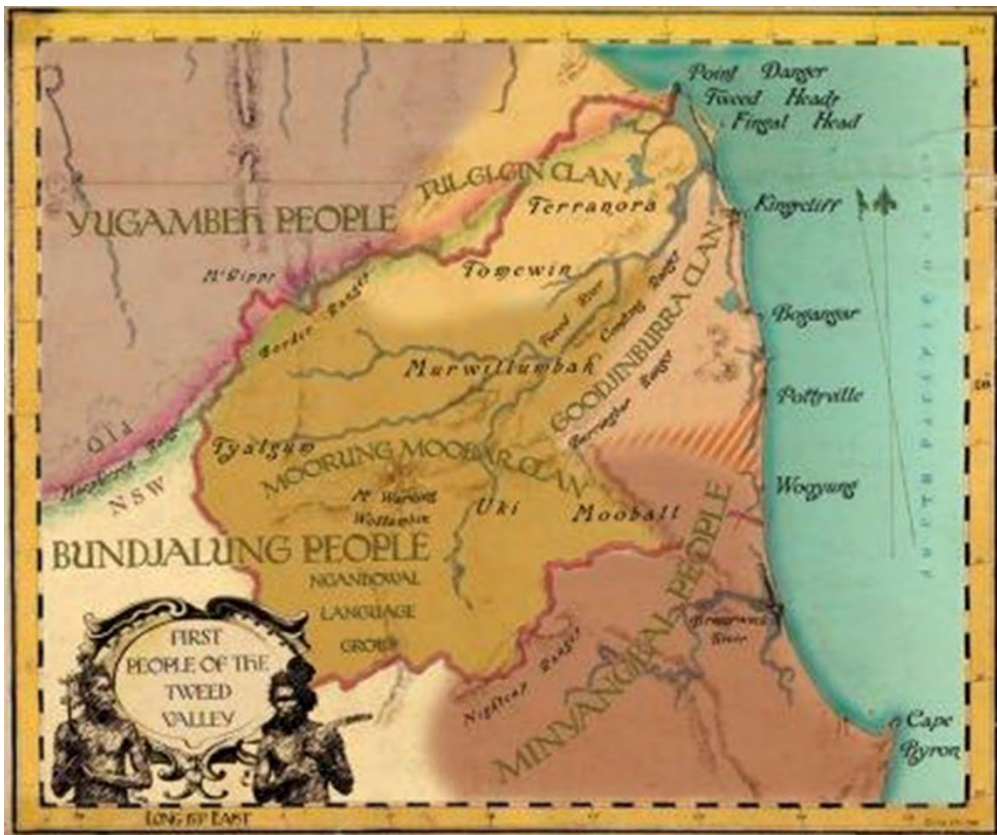
### 3.3 Historical summary

The following section of the report provides a condensed historical summary that has been sourced *Kingscliff Public School Historic Heritage Assessment* prepared by EMM in 2021.

#### 3.3.1 Indigenous heritage

Kingscliff Public School lies within the country of the Bundjalung-Yugambah language group. Oral histories in the Tweed River Valley tell of Three Brothers who came to the land in the Dreaming, gave the people lore and formed three tribes who spread across the country (Tweed Regional Museum, 2020). The three tribes continue to be represented in the three groups of the Tweed Valley and ethnographic records indicate the Goodjimbingurra (Coodjimbingurra) clan, who spoke the Ngandowal dialect, occupied the area between the Tweed River and Pottsville (Plate 3.1) (Boileau, 2004, pp. 20–21). Kingscliff was a significant location within the Goodjimbingurra territory as it held the source of ceremonial red ochre (Boileau, 2004, p. 20).

The Tweed Valley was rich in natural resources which were exploited by the Aboriginal people; these rich resources also attracted European settlers to the area (Tweed Regional Museum, 2020). The invasion of European cedar getters from 1844 began the dispossession of the Goodjimbingurra (Boileau, 2004, p. 29). The large-scale clearing of land for crops and drainage of the natural wetlands interrupted natural environmental processes integral to the Aboriginal way of life (Boileau 2004, p.30). It is believed that loss of access to resources, disease, and conflict caused a dramatic decrease in the Goodjimbingurra population (Tweed Regional Museum, 2020).



**Plate 3.1** Map of the First People of the Tweed Valley. Source: Tweed Regional Museum 2020.

### 3.3.2 Early exploration

Captain Cook was the first European to observe the Tweed region narrowly avoiding running aground on a sandbar near the mouth of the Tweed River in May of 1770 (Boileau, 2004, p. 40). In 1819 Lieutenant Phillip Parker King surveyed the north-east coast and noted the Tweed region “appears to be productive and wooded” (Boileau, 2004, p. 40). In 1823 Governor Brisbane commissioned John Oxley to find a site for a new northern penal settlement (Boileau, 2004, p. 40). A member of Oxley’s expedition John Uniacke was impressed by the “deep rich valley, clothed with magnificent trees” of the Tweed (Boileau, 2004, p. 41). The Tweed and Brunswick Rivers were officially surveyed in 1840 (Boileau, 2004, p. 42). The County of Rous was proclaimed in 1843 and became the most north-east County of NSW at the declaration of the Colony of Queensland on the 6 June 1859 (Boileau, 2004, p. 42).

Kingscliff was historically known as Sutherland Point or the Cudgen Headland (Geographical Names Board online, n.d.). The call of cedar brought the first European settlers to the region (Boileau, 2004, p. 44). Convict gangs from the Morton Bay penal settlement had cut cedar and pine in the Tweed Valley from 1829 but the enterprise was soon abandoned due to constant attacks from local Aboriginal groups (Boileau, 2004, p. 44). In 1844 free cedar getters established a settlement of tents and bark huts at Terranora on the north bank of Tweed River, north west of the project area (Boileau, 2004, pp. 44–45). Further settlements had been established at Chinderah and Kynnumboon by 1860 (Boileau, 2004, p. 48).

In addition to cedar, Cudgen was well known for its sugar cane farming. Beginning in the 1800s, South Sea Islanders were invited, coerced and kidnapped in order to work on sugar farms throughout Australia (Mortensen, 2000, pp. 1–3). In 1901 the *Pacific Island Labourers Act 1901* was enacted under the White Australian policy which saw 1000s of South Sea Islanders deported, many whom had been born and raised in Australia and knew no other home (My Capricorn Coast 2010). At the time the *Pacific Island Labourers Act* was established, rumours began to spread to

the northern canefields that there were better working conditions down south at Cudgen for the islanders. The cane industry boomed around Cudgen thanks to the hard work of the South Sea Islanders, but in 1912 the main Cudgen Mill was sold to The Colonial Sugar Refining Company Limited (CSR) which moved the mill further south (Wallace, 2012, p. 16).

The Tweed Valley was open for selection after the area was surveyed in 1862 (Boileau, 2004, p. 43). Land on the Kingscliff headland had been subdivided for selection by 1880 (Niche Environment and Heritage Pty Ltd, 2018, p. 10).

### 3.3.3 Kingscliff Public School

Kingscliff Public School is located in the boundaries of the historical lot 59 in the Parish of Cudgen. William Shaw took up the first conditional purchase of the property in 1881 (Northern Star, 1881, p. 2). Shaw forfeited the lease and the conditional purchase was granted to the Bank of New South Wales in 1909 (Vol. 1922 Fol. 19). The property was transferred to Edith May Martha Hungerford in 1912.

The Hungerfords established the “Hungerford Subdivision, at Cudgen Headland” in 1914. Lot 59 was subdivided and twelve suburban lots in two sections were made available for sale along Omar and Orient Streets (Vol. 2688 Fol. 199). A second subdivision “of the high land overlooking the beach” was offered for sale in 1918 and promoted as an idyllic holiday resort that was also suitable for a variety of farming ventures (Tweed Daily, 1918, p. 2, 1924, p. 2). Property records state that Edith May Martha Hungerford transferred a 4 acre (1.6 ha) portion of Lot 59 to “to Her Most Gracious Majesty Queen Elizabeth the second” on the 25 August 1953 (Vol. 6750 Fol. 136). The newly designated Crown Land would become the location of Kingscliff Public School.

Kingscliff Public School was gazetted in June 1955 (Government Gazette of the State of New South Wales, 1955, p. 2543). A six roomed schoolhouse was commissioned to relieve overcrowding at the Cudgen Central School (Northern Star, 1954, p. 6). The school was to take the public school-aged children with high school aged children attending school in Tweed Heads. The first principal of Kingscliff Public School was Hubert “Bert” Payne.

The original schoolhouse is visible as the primary building on the KPS school site on the 1962 aerial photograph of Kingscliff.

## 3.4 Assessment of significance

### 3.4.1 The significance framework

In NSW, historical value is ascribed to buildings, places, archaeological sites and landscapes modified in the Australian historical period for purposes other than traditional Aboriginal use. The assessment of heritage significance is based on the *Burra Charter* (Australia ICOMOS 2013) and further expanded upon in *Assessing Heritage Significance* (NSW Heritage Manual Heritage Office 2001). The heritage manual lists seven criteria to identify and assess heritage values that apply when considering if an item is of State or local heritage significance, and which are set out in Table 3.2. It also identifies the heritage gradings for which items (or features or components) that were recorded on site have been assessed against, which are set out in Table 6.2, and which provide context for each individual item’s contribution to the cultural landscape. The result of the assessments of significance may determine that an individual component does not meet the threshold for local or State significance as an individual item, but that it does contribute to the significance of the cultural landscape.

The criteria against which heritage significance has been assessed are reproduced in Table 3.2. The assessment of relics is hypothetical as their existence as intact and substantial sites is predicted.

**Table 3.2 NSW heritage assessment criteria**

Criterion	Explanation
a) Historical	An item is important in the course or pattern of NSW's (or the local area's) cultural or natural history (Historical Significance).
b) Associative	An item has strong or special association with the life or works of a person, or group of persons of importance in NSW's (or the local area's) cultural or natural history (Associative Significance).
c) Aesthetic	An item is important in demonstrating aesthetic characteristics and/or a high degree of creative or technical achievement in NSW (or the local area) (Aesthetic Significance).
d) Social	An item has a strong or special association with a particular community or cultural group in NSW (or the local area) for social, cultural, or spiritual reasons (Social Significance).
e) Research	An item has the potential to yield information that will contribute to an understanding of NSW's (or the local area's) cultural or natural history (Research Significance).
f) Representative	An item possesses uncommon, rare, or endangered aspects of NSW's (or the local area's) cultural or natural history (Rarity).
g) Rare	An item is important in demonstrating the principal characteristics of a class of NSW's (or the local area's) cultural or natural places or environments (Representativeness).

Source: *Assessing heritage significance* (NSW Heritage Office 2001, p.9).

### 3.4.2 Assessment of significance

The following significance assessment has been taken, and supplemented where appropriate, from the *Kingscliff Public School Historic Heritage Assessment* prepared by EMM in 2021.

**Table 3.3 Assessment of significance Kingscliff Public School**

Criterion	Explanation
a) Historical	Kingscliff Public School was a welcome addition to the area, easing the stress on the much older Cudgen Public School. While the school was important to the development of the local area, this importance does not reach the threshold for this criterion. <b>The project area does not meet this criterion.</b>
b) Associative	The school is not associated with any notable persons. <b>The project area does not meet this criterion.</b>
c) Aesthetic	The main school building was established in 1957, a locally distinct L-shaped weatherboard structure, which has a main entry with a brick parapet and short wing stretching to the east and long wing to the west. The KPS school room exhibits a min-twentieth century vernacular which represents a type that not often protected as examples of their time. This amalgamation of styles and its simplicity of form and design may be circumstantial, related to the period and geographic context of its construction and the financial resources available to the community at the time. <b>The main school building is of interest but does not reach the threshold for local significance.</b>
d) Social	The school was built to ease overcrowding at Cudgen Public School but does not appear to be an important item to the current community. <b>The project area does not meet this criterion.</b>
e) Research	The site does not possess research potential. <b>The project area does not meet this criterion.</b>
f) Representative	<b>The project area does not meet this criterion.</b>
g) Rare	<b>The project area does not meet this criterion.</b>

### 3.4.3 Statement of significance

Kingscliff Public School is located on land that has been subject to significant disturbance throughout its history. In addition to this, background research has not indicated the possibility of any structures present on the landscape prior to the building of the school in 1957. There is no significant association with a person or persons of historical note.

The Kingscliff Public School building was proposed in 1955 and constructed in 1957 and exhibits both a mid-twentieth century vernacular, expressed in the main entry structure and a post-war aesthetic in the materiality and form of the building's wings. This amalgamation of styles and its simplicity of form and design is circumstantial, related to the period and geographic context of its construction and the financial resources available to the community at the time. The building is directly associated with its historic connection with the local community as purpose-built for education and the first iteration of this type of building within the Kingscliff Public School site. Nevertheless, it does not reach the threshold of this criterion, despite being of interest in this regard.

Kingscliff Public School in its entirety does not hold any significance locally or at the state level, however the main school building is of aesthetic interest but does not quite meet the local threshold.

## 4 Photographic image catalogue

The photographic catalogue is presented in Plate 4.1 and includes:

- an image number that corresponds with the photographic base plans. The photographic plans are cross-referenced with the photographic catalogue;
- the digital image number that corresponds with the camera classification of the captured photograph and the provide photographic thumbnails;
- the date the photograph was captured;
- the location where the photograph was captured;
- a brief description of the photograph and the items/locations captured; and
- the orientation the photograph was captured from is indicated on the photographic base plans.

Contact sheets with the thumbnail image is provided in Appendix A and photographic base plans for the project site are provided in Appendix B. The photographic plans are cross-referenced with the photographic register in the catalogue tables below that provide more detailed descriptions of the captured photographs.





IMG0086.jpg	14/04/2022	086	CR0030 - S Scale	3.5	1/40
IMG0087.jpg	14/04/2022	087	CR0030 - W Scale	3.5	1/25
IMG0088.jpg	14/04/2022	088	CR0031 - N No Scale	3.5	1/40
IMG0089.jpg	14/04/2022	089	CR0031 - S No Scale	3.5	1/30
IMG0090.jpg	14/04/2022	090	CR0034 - NE No Scale	3.5	1/80
IMG0091.jpg	14/04/2022	091	CR0034 - looking towards CR0018	8	1/8
IMG0092.jpg	14/04/2022	092	CR9001 - N	3.5	1/20
IMG0093.jpg	14/04/2022	093	CR9001 - N	3.5	1/13
IMG0094.jpg	14/04/2022	094	CR9001 - SW	3.5	1/20
IMG0095.jpg	14/04/2022	095	CR9002 - NE	3.5	1/30
IMG0096.jpg	14/04/2022	096	CR9002 - SW	3.5	1/25
IMG0097.jpg	14/04/2022	097	CR9003 - NE	3.5	1/25
IMG0098.jpg	14/04/2022	098	CR9003 - NW	3.5	1/15
IMG0099.jpg	14/04/2022	099	CR9003 - SE	3.5	1/13
IMG0100.jpg	14/04/2022	100	CR9003 - SW	3.5	1/20
IMG0101.jpg	14/04/2022	101	Entry to CR9003	4	1/80
IMG0102.jpg	14/04/2022	102	External - Art Detail #4	4.5	1/125
IMG0103.jpg	14/04/2022	103	External - Detail of Boot Scrubber at bottom of stairs to CR0034	9	1/160
IMG0104.jpg	14/04/2022	104	External - Detail of Boot Scrubber at bottom of stairs to CR0034	7.1	1/320
IMG0105.jpg	14/04/2022	105	External - Detail of Boot Scrubber at bottom of stairs to CR0034	9	1/160
IMG0106.jpg	14/04/2022	106	External - North west along southern side of western arm of building	5.6	1/160
IMG0107.jpg	14/04/2022	107	External - South along western side of southern arm of building	5.6	1/200
IMG0108.jpg	14/04/2022	108	External - North towards CR0004 & CR0006	5.6	1/160
IMG0109.jpg	14/04/2022	109	External - East towards CR0009 & CR0011	5.6	1/160
IMG0110.jpg	14/04/2022	110	External - East towards CR0034	7.1	1/250
IMG0111.jpg	14/04/2022	111	External - North towards north western arm of building	6.3	1/200
IMG0112.jpg	14/04/2022	112	External - North towards north western arm of building	6.3	1/200
IMG0113.jpg	14/04/2022	113	External - Northeast towards CR0034	5.6	1/200
IMG0114.jpg	14/04/2022	114	External - East towards CR0022 & CR0024	4.5	1/100
IMG0115.jpg	14/04/2022	115	External - South east towards CR0026 & CR0031	4.5	1/125
IMG0116.jpg	14/04/2022	116	External - North along western side of southern arm of building	6.3	1/250
IMG0117.jpg	14/04/2022	117	External - North along western side of southern arm of building	9	1/200
IMG0118.jpg	14/04/2022	118	External - South east along southern side of western arm of building	5.6	1/160
IMG0119.jpg	14/04/2022	119	External - South east along southern side of western arm of building	5	1/125
IMG0120.jpg	14/04/2022	120	External - South east along southern side of western arm of building	5.6	1/200
IMG0121.jpg	14/04/2022	121	External - South towards CR0003	7.1	1/160
IMG0122.jpg	14/04/2022	122	External - South towards CR0003	7.1	1/160
IMG0123.jpg	14/04/2022	123	External - South towards CR0005	7.1	1/160
IMG0124.jpg	14/04/2022	124	External - South towards CR0008	7.1	1/200
IMG0125.jpg	14/04/2022	125	External - South towards CR0012	9	1/250
IMG0126.jpg	14/04/2022	126	External - South towards CR0012	10	1/200
IMG0127.jpg	14/04/2022	127	External - South towards CR0012	8	1/250
IMG0128.jpg	14/04/2022	128	Original School Signage on CR0012	9	1/200
IMG0129.jpg	14/04/2022	129	External - Southeast towards CR0015	8	1/400
IMG0130.jpg	14/04/2022	130	External - West towards CR0012	8	1/320
IMG0131.jpg	14/04/2022	131	External - Plaque #1 detail left of entrance to CR0012	6.3	1/100
IMG0132.jpg	14/04/2022	132	External - Plaque #1 detail left of entrance to CR0012	5.6	1/80
IMG0133.jpg	14/04/2022	133	External - West towards CR0015	7.1	1/250
IMG0134.jpg	14/04/2022	134	External - Southwest along southern side of CR0015	5.6	1/200
IMG0135.jpg	14/04/2022	135	External - North towards CR0015	6.3	1/200
IMG0136.jpg	14/04/2022	136	External - Northwest towards CR0018	6.3	1/250
IMG0137.jpg	14/04/2022	137	External - West towards CR0021 and CR0023	7.1	1/250
IMG0138.jpg	14/04/2022	138	External - North along eastern side of CR0021 & CR0023	6.3	1/250
IMG0139.jpg	14/04/2022	139	External - South along eastern side of CR0023 & CR0030	7.1	1/320
IMG0140.jpg	14/04/2022	140	External - South along eastern side of CR0030	7.1	1/250
IMG0141.jpg	14/04/2022	141	External - West towards CR0030	7.1	1/320
IMG0142.jpg	14/04/2022	142	External - West along southern side of CR0030	7.1	1/320
IMG0143.jpg	14/04/2022	143	External - North west towards CR0030	7.1	1/320
IMG0144.jpg	14/04/2022	144	External - North east towards CR0030	7.1	1/250
IMG0145.jpg	14/04/2022	145	External - North towards CR0030	7.1	1/250
IMG0146.jpg	14/04/2022	146	External - Detail of drinking trough along southern side of CR0030	5.6	1/200
IMG0147.jpg	14/04/2022	147	External - 'Bubblers' sign on southern side of CR0030	8	1/160
IMG0148.jpg	14/04/2022	148	External - North east towards CR0030	7.1	1/320
IMG0149.jpg	14/04/2022	149	External - East towards CR0001 & CR0002	7.1	1/250
IMG0150.jpg	14/04/2022	150	External - East towards CR9001 & CR9002	4.5	1/100
IMG0151.jpg	14/04/2022	151	External - South west along western side of CR9001	3.5	1/25
IMG0152.jpg	14/04/2022	152	External - East towards CR0035	3.5	1/50
IMG0153.jpg	14/04/2022	153	External - North west down stairs CR0035	3.5	1/30
IMG0154.jpg	14/04/2022	154	External - East towards CR0007	4.5	1/100
IMG0155.jpg	14/04/2022	155	External - South from CR0007 towards door to CR0003	3.5	1/25
IMG0156.jpg	14/04/2022	156	External - South from CR0007 towards door to CR0008	4	1/80
IMG0157.jpg	14/04/2022	157	External - South from CR0007 towards door to CR0005	3.5	1/60
IMG0158.jpg	14/04/2022	158	External - West from CR0007 towards CR0035	4	1/80
IMG0159.jpg	14/04/2022	159	External - North towards Pacific Ocean from CR0007	7.1	1/250
IMG0160.jpg	14/04/2022	160	External - South towards CR9005	3.5	1/80
IMG0161.jpg	14/04/2022	161	External - South towards CR9005	3.5	1/80
IMG0162.jpg	14/04/2022	162	External - Southwest towards CR9003	4.5	1/125
IMG0163.jpg	14/04/2022	163	External - Southwest towards door of CR9005	3.5	1/30
IMG0164.jpg	14/04/2022	164	External - Southeast view of CR9005	3.5	4

## 5 References

1885 'COUNTRY NEWS.', *The Sydney Mail and New South Wales Advertiser (NSW : 1871 - 1912)*, 7 November, p. 986. , viewed 09 Dec 2020, <http://nla.gov.au/nla.news-article162822389>

*Australian Town and Country Journal*, 26 November 1881, On the Tweed, p.26.

Boileau, J. 2004, *Tweed Shire Council Community Based Heritage Study Thematic History*, report prepared for Tweed Shire Council.

Douglas and Partners 2020a, *Report of preliminary geotechnical investigation; proposed school structures Kingscliff High School*, prepared for School Infrastructure NSW

Douglas and Partners 2020b, *Report of preliminary geotechnical investigation; proposed school structures Kingscliff Primary School*, prepared for School Infrastructure NSW

*Government Gazette of the State of New South Wales*, 26 August 1955, p.543.

*Gympie Times and Mary River Mining Gazette*, 24 April 1909, Tweed Dairy Farm, p.7.

Heritage Office, 1998. *How to Prepare Archival Records of Heritage Items*. NSW: Department of Planning.

Heritage Office, 2006. *Photographic Recording of Heritage Items using Film or Digital Capture*. NSW: Department of Planning.

Mortensen, R 2000, Slaving in Australian Courts: Blackbirding cases, 1869-1871, '*Journal of South Pacific Law*' vol 4

*New South Wales Government Gazette*, 8 April 1879, Timber and Other Licenses, p.1645.

*Northern Star*, 6 August 1881, Local and General News, p.2.

23 March 1912, The Cudgen Estate, p.4, 13.

2 April 1954, New School at Kingscliff, p.6

*The Brisbane Courier*, 16 November 1883, Cudgen, Tweed River, p.3.

*Tweed Daily*, 6 August 1918, Cudgen Headland, p.2.

23 January 1924, Cudgen Headland, p.2

Tweed Regional Museum 2020, *Aboriginal Cultural Heritage*, Retrieved 12 November 2020 <https://museum.tweed.nsw.gov.au/AboriginalCulturalHeritage>

Wallace, D 2012, *Cutting the Cane. The early years of the sugar can industry in Cudgen*, viewed 03 December 2020 <[http://www.thekingscandlesticks.com/index\\_htm\\_files/Cutting%20the%20Cane%20by%20Deborah%20Wallace.pdf](http://www.thekingscandlesticks.com/index_htm_files/Cutting%20the%20Cane%20by%20Deborah%20Wallace.pdf) >

---

Appendix A

# Photograph contact sheet

---

DRAFT

**Kingscliff Public School Archival Recording**  
**EMM Consulting Pty Ltd | Luke Kirkwood | 12/04/22**



Photo #: IMG0001.jpg  
Caption: CR0001 - Looking into CR0003  
doors open  
Camera Model: Canon EOS M50  
Focal Length: 15.00mm  
Shutter Speed: 1/8



Photo #: IMG0002.jpg  
Caption: CR0001 - Looking towards doors  
Camera Model: Canon EOS M50  
Focal Length: 15.00mm  
Shutter Speed: 1/8



Photo #: IMG0003.jpg  
Caption: CR0001 - NE Scale  
Camera Model: Canon EOS M50  
Focal Length: 15.00mm  
Shutter Speed: 1/10

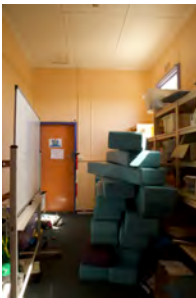


Photo #: IMG0004.jpg  
Caption: CR0001 - SW Scale  
Camera Model: Canon EOS M50  
Focal Length: 15.00mm  
Shutter Speed: 1/10

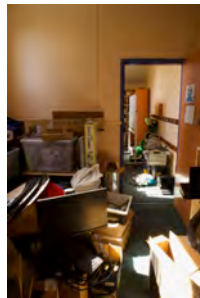


Photo #: IMG0005.jpg  
Caption: CR0002 - NE No Scale  
Camera Model: Canon EOS M50  
Focal Length: 15.00mm  
Shutter Speed: 1/8

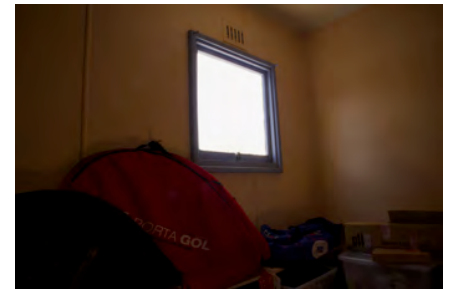


Photo #: IMG0006.jpg  
Caption: CR0002 - NW No Scale  
Camera Model: Canon EOS M50  
Focal Length: 15.00mm  
Shutter Speed: 1/8

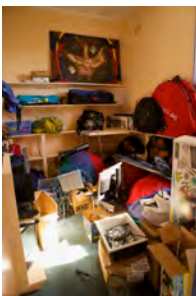


Photo #: IMG0007.jpg  
Caption: CR0002 - SW No Scale  
Camera Model: Canon EOS M50  
Focal Length: 15.00mm  
Shutter Speed: 1/10

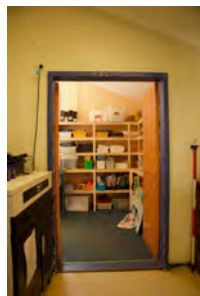


Photo #: IMG0008.jpg  
Caption: CR0003 - Looking into CR0005  
doors open  
Camera Model: Canon EOS M50  
Focal Length: 15.00mm  
Shutter Speed: 1/10

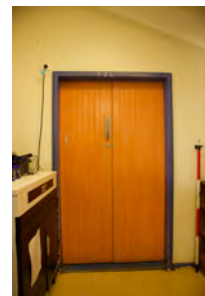


Photo #: IMG0009.jpg  
Caption: Door to CR001  
Camera Model: Canon EOS M50  
Focal Length: 15.00mm  
Shutter Speed: 1/10



Photo #: IMG0010.jpg  
Caption: CR0003 - SE  
Camera Model: Canon EOS M50  
Focal Length: 15.00mm  
Shutter Speed: 1/8



Photo #: IMG0011.jpg  
Caption: CR0004 - NE Scale  
Camera Model: Canon EOS M50  
Focal Length: 15.00mm  
Shutter Speed: 1/13



Photo #: IMG0012.jpg  
Caption: CR0004 - NW Scale  
Camera Model: Canon EOS M50  
Focal Length: 15.00mm  
Shutter Speed: 1/13

**Kingscliff Public School Archival Recording**  
**EMM Consulting Pty Ltd | Luke Kirkwood | 12/04/22**



Photo #: IMG0013.jpg  
Caption: CR0004 - SE Scale  
Camera Model: Canon EOS M50  
Focal Length: 15.00mm  
Shutter Speed: 1/13



Photo #: IMG0014.jpg  
Caption: CR0004 - SW Scale  
Camera Model: Canon EOS M50  
Focal Length: 15.00mm  
Shutter Speed: 1/13



Photo #: IMG0015.jpg  
Caption: CR0005 - Looking into CR0003  
doors open  
Camera Model: Canon EOS M50  
Focal Length: 15.00mm  
Shutter Speed: 1/13

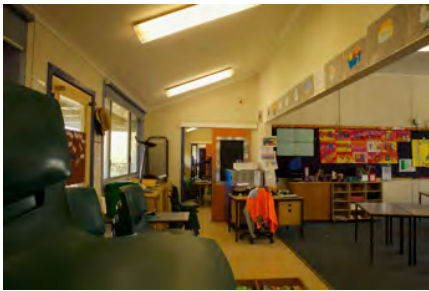


Photo #: IMG0016.jpg  
Caption: CR0005 - SE  
Camera Model: Canon EOS M50  
Focal Length: 15.00mm  
Shutter Speed: 1/8



Photo #: IMG0017.jpg  
Caption: CR0006 - NE Scale  
Camera Model: Canon EOS M50  
Focal Length: 16.00mm  
Shutter Speed: 1/13



Photo #: IMG0018.jpg  
Caption: CR0006 - NW Scale  
Camera Model: Canon EOS M50  
Focal Length: 16.00mm  
Shutter Speed: 1/13



Photo #: IMG0019.jpg  
Caption: CR0006 - SW Scale  
Camera Model: Canon EOS M50  
Focal Length: 16.00mm  
Shutter Speed: 1/13



Photo #: IMG0020.jpg  
Caption: CR0006 - SW Scale  
Camera Model: Canon EOS M50  
Focal Length: 16.00mm  
Shutter Speed: 1/13



Photo #: IMG0021.jpg  
Caption: CR0008 - Looking into CR0005  
doors open  
Camera Model: Canon EOS M50  
Focal Length: 15.00mm  
Shutter Speed: 1/13



Photo #: IMG0022.jpg  
Caption: CR0008 - SE  
Camera Model: Canon EOS M50  
Focal Length: 15.00mm  
Shutter Speed: 1/8



Photo #: IMG0023.jpg  
Caption: CR0009 - NE Scale  
Camera Model: Canon EOS M50  
Focal Length: 15.00mm  
Shutter Speed: 1/15



Photo #: IMG0024.jpg  
Caption: CR0009 - NW Scale  
Camera Model: Canon EOS M50  
Focal Length: 15.00mm  
Shutter Speed: 1/15

**Kingscliff Public School Archival Recording**  
**EMM Consulting Pty Ltd | Luke Kirkwood | 12/04/22**



Photo #: IMG0025.jpg  
Caption: CR0009 - SW Scale  
Camera Model: Canon EOS M50  
Focal Length: 15.00mm  
Shutter Speed: 1/15



Photo #: IMG0026.jpg  
Caption: CR0009 - SW Scale  
Camera Model: Canon EOS M50  
Focal Length: 15.00mm  
Shutter Speed: 1/15



Photo #: IMG0027.jpg  
Caption: CR0010 - Looking into CR0008  
doors open  
Camera Model: Canon EOS M50  
Focal Length: 15.00mm  
Shutter Speed: 1/50



Photo #: IMG0028.jpg  
Caption: CR0010 - SE  
Camera Model: Canon EOS M50  
Focal Length: 15.00mm  
Shutter Speed: 1/8



Photo #: IMG0029.jpg  
Caption: CR0011 - NE Scale  
Camera Model: Canon EOS M50  
Focal Length: 16.00mm  
Shutter Speed: 1/60



Photo #: IMG0030.jpg  
Caption: CR0011 - NW Scale  
Camera Model: Canon EOS M50  
Focal Length: 15.00mm  
Shutter Speed: 1/60



Photo #: IMG0031.jpg  
Caption: CR0011 - SE Scale  
Camera Model: Canon EOS M50  
Focal Length: 15.00mm  
Shutter Speed: 1/13



Photo #: IMG0032.jpg  
Caption: CR0011 - SW Scale  
Camera Model: Canon EOS M50  
Focal Length: 15.00mm  
Shutter Speed: 1/50



Photo #: IMG0033.jpg  
Caption: CR0012 - Detail Sink  
Camera Model: Canon EOS M50  
Focal Length: 15.00mm  
Shutter Speed: 1/50



Photo #: IMG0034.jpg  
Caption: CR0012 - E Scale  
Camera Model: Canon EOS M50  
Focal Length: 15.00mm  
Shutter Speed: 1/125



Photo #: IMG0035.jpg  
Caption: CR0012 - Looking into CR0010 -  
Scale  
Camera Model: Canon EOS M50  
Focal Length: 15.00mm  
Shutter Speed: 1/20



Photo #: IMG0036.jpg  
Caption: CR0012 - SSW  
Camera Model: Canon EOS M50  
Focal Length: 15.00mm  
Shutter Speed: 1/40

**Kingscliff Public School Archival Recording**  
**EMM Consulting Pty Ltd | Luke Kirkwood | 12/04/22**



Photo #: IMG0037.jpg  
Caption: CR0012 - SSW  
Camera Model: Canon EOS M50  
Focal Length: 15.00mm  
Shutter Speed: 1/80



Photo #: IMG0038.jpg  
Caption: CR0012 - Art Detail #3  
Camera Model: Canon EOS M50  
Focal Length: 32.00mm  
Shutter Speed: 1/13



Photo #: IMG0039.jpg  
Caption: CR0012 - W No Scale  
Camera Model: Canon EOS M50  
Focal Length: 15.00mm  
Shutter Speed: 1/80



Photo #: IMG0040.jpg  
Caption: CR0013 - Art Detail #1  
Camera Model: Canon EOS M50  
Focal Length: 41.00mm  
Shutter Speed: 1/40



Photo #: IMG0041.jpg  
Caption: CR0013 - Art Detail #2  
Camera Model: Canon EOS M50  
Focal Length: 15.00mm  
Shutter Speed: 1/20



Photo #: IMG0042.jpg  
Caption: CR0013 - E Scale  
Camera Model: Canon EOS M50  
Focal Length: 15.00mm  
Shutter Speed: 1/40



Photo #: IMG0043.jpg  
Caption: CR0013 - NE Scale  
Camera Model: Canon EOS M50  
Focal Length: 15.00mm  
Shutter Speed: 1/30



Photo #: IMG0044.jpg  
Caption: CR0013 - SW Scale  
Camera Model: Canon EOS M50  
Focal Length: 15.00mm  
Shutter Speed: 1/80



Photo #: IMG0045.jpg  
Caption: CR0013 - W Scale  
Camera Model: Canon EOS M50  
Focal Length: 15.00mm  
Shutter Speed: 1/40



Photo #: IMG0046.jpg  
Caption: CR0014 Storeroom - SSE Scale  
Camera Model: Canon EOS M50  
Focal Length: 18.00mm  
Shutter Speed: 1/3



Photo #: IMG0047.jpg  
Caption: CR0015 - ENE Scale  
Camera Model: Canon EOS M50  
Focal Length: 15.00mm  
Shutter Speed: 1/100



Photo #: IMG0048.jpg  
Caption: CR0015 - NNE Scale  
Camera Model: Canon EOS M50  
Focal Length: 15.00mm  
Shutter Speed: 1/125



**Kingscliff Public School Archival Recording**  
**EMM Consulting Pty Ltd | Luke Kirkwood | 12/04/22**



Photo #: IMG0049.jpg  
Caption: CR0015 - SSE Scale  
Camera Model: Canon EOS M50  
Focal Length: 15.00mm  
Shutter Speed: 1/100



Photo #: IMG0050.jpg  
Caption: CR0015 - WSW Scale  
Camera Model: Canon EOS M50  
Focal Length: 15.00mm  
Shutter Speed: 1/80



Photo #: IMG0051.jpg  
Caption: CR0016 - SSE  
Camera Model: Canon EOS M50  
Focal Length: 15.00mm  
Shutter Speed: 1/13



Photo #: IMG0052.jpg  
Caption: CR0016 from CR0015 - ESE  
Camera Model: Canon EOS M50  
Focal Length: 15.00mm  
Shutter Speed: 1/25



Photo #: IMG0053.jpg  
Caption: CR0017 - E No Scale  
Camera Model: Canon EOS M50  
Focal Length: 15.00mm  
Shutter Speed: 1/5



Photo #: IMG0054.jpg  
Caption: Photo 089  
Camera Model: Canon EOS M50  
Focal Length: 15.00mm  
Shutter Speed: 1/6



Photo #: IMG0055.jpg  
Caption: CR0018 - N looking into CR0017 Scale  
Camera Model: Canon EOS M50  
Focal Length: 15.00mm  
Shutter Speed: 1/20

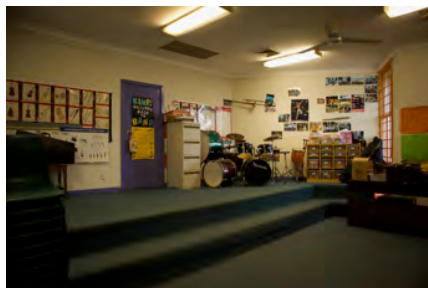


Photo #: IMG0056.jpg  
Caption: CR0018 - NE Scale  
Camera Model: Canon EOS M50  
Focal Length: 15.00mm  
Shutter Speed: 1/40

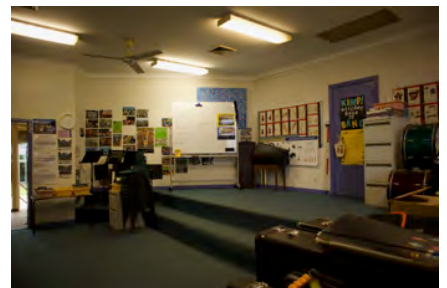


Photo #: IMG0057.jpg  
Caption: CR0018 - NW Scale  
Camera Model: Canon EOS M50  
Focal Length: 15.00mm  
Shutter Speed: 1/40

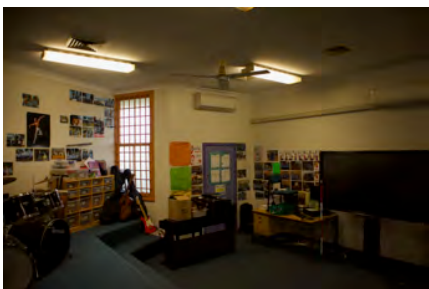


Photo #: IMG0058.jpg  
Caption: CR0018 - SE Scale  
Camera Model: Canon EOS M50  
Focal Length: 15.00mm  
Shutter Speed: 1/60



Photo #: IMG0059.jpg  
Caption: CR0018 - SW Scale  
Camera Model: Canon EOS M50  
Focal Length: 15.00mm  
Shutter Speed: 1/60



Photo #: IMG0060.jpg  
Caption: CR0019 - NE  
Camera Model: Canon EOS M50  
Focal Length: 15.00mm  
Shutter Speed: 1/15

**Kingscliff Public School Archival Recording**  
**EMM Consulting Pty Ltd | Luke Kirkwood | 12/04/22**

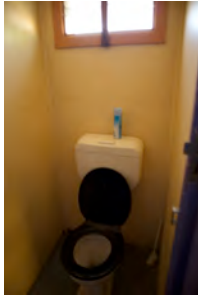


Photo #: IMG0061.jpg  
Caption: CR0019 - NE  
Camera Model: Canon EOS M50  
Focal Length: 15.00mm  
Shutter Speed: 1/8



Photo #: IMG0062.jpg  
Caption: CR0020 - E Scale  
Camera Model: Canon EOS M50  
Focal Length: 16.00mm  
Shutter Speed: 1/10



Photo #: IMG0063.jpg  
Caption: CR0020 - W towards CR0022  
Scale  
Camera Model: Canon EOS M50  
Focal Length: 16.00mm  
Shutter Speed: 1/80



Photo #: IMG0064.jpg  
Caption: CR0021 - E Scale  
Camera Model: Canon EOS M50  
Focal Length: 15.00mm  
Shutter Speed: 1/80



Photo #: IMG0065.jpg  
Caption: CR0021 - N Scale  
Camera Model: Canon EOS M50  
Focal Length: 15.00mm  
Shutter Speed: 1/30



Photo #: IMG0066.jpg  
Caption: CR0021 - N towards CR0020 and  
CR0019 Scale  
Camera Model: Canon EOS M50  
Focal Length: 18.00mm  
Shutter Speed: 1/25



Photo #: IMG0067.jpg  
Caption: CR0021 - S Scale  
Camera Model: Canon EOS M50  
Focal Length: 15.00mm  
Shutter Speed: 1/20



Photo #: IMG0068.jpg  
Caption: CR0021 - W Scale  
Camera Model: Canon EOS M50  
Focal Length: 15.00mm  
Shutter Speed: 1/25



Photo #: IMG0069.jpg  
Caption: CR0022 - N No Scale  
Camera Model: Canon EOS M50  
Focal Length: 15.00mm  
Shutter Speed: 1/40



Photo #: IMG0070.jpg  
Caption: CR0022 - S No Scale  
Camera Model: Canon EOS M50  
Focal Length: 15.00mm  
Shutter Speed: 1/40



Photo #: IMG0071.jpg  
Caption: CR0023 - E Scale  
Camera Model: Canon EOS M50  
Focal Length: 15.00mm  
Shutter Speed: 1/100



Photo #: IMG0072.jpg  
Caption: CR0023 - N Scale  
Camera Model: Canon EOS M50  
Focal Length: 15.00mm  
Shutter Speed: 1/60

**Kingscliff Public School Archival Recording**  
**EMM Consulting Pty Ltd | Luke Kirkwood | 12/04/22**



Photo #: IMG0073.jpg  
Caption: CR0023 - S Scale  
Camera Model: Canon EOS M50  
Focal Length: 15.00mm  
Shutter Speed: 1/50



Photo #: IMG0074.jpg  
Caption: CR0023 - W Scale  
Camera Model: Canon EOS M50  
Focal Length: 15.00mm  
Shutter Speed: 1/50



Photo #: IMG0075.jpg  
Caption: CR0024 - N No Scale  
Camera Model: Canon EOS M50  
Focal Length: 15.00mm  
Shutter Speed: 1/25



Photo #: IMG0076.jpg  
Caption: CR0024 - S No Scale  
Camera Model: Canon EOS M50  
Focal Length: 15.00mm  
Shutter Speed: 1/20



Photo #: IMG0077.jpg  
Caption: CR0025 - S Scale  
Camera Model: Canon EOS M50  
Focal Length: 15.00mm  
Shutter Speed: 1/30



Photo #: IMG0078.jpg  
Caption: CR0026 - N No Scale  
Camera Model: Canon EOS M50  
Focal Length: 15.00mm  
Shutter Speed: 1/25



Photo #: IMG0079.jpg  
Caption: CR0027 - E Scale  
Camera Model: Canon EOS M50  
Focal Length: 15.00mm  
Shutter Speed: 1/25



Photo #: IMG0080.jpg  
Caption: CR00227 - E Scale  
Camera Model: Canon EOS M50  
Focal Length: 15.00mm  
Shutter Speed: 1/20



Photo #: IMG0081.jpg  
Caption: CR0027 - W Scale  
Camera Model: Canon EOS M50  
Focal Length: 15.00mm  
Shutter Speed: 1/40



Photo #: IMG0082.jpg  
Caption: CR0026 - S No Scale  
Camera Model: Canon EOS M50  
Focal Length: 15.00mm  
Shutter Speed: 1/20



Photo #: IMG0083.jpg  
Caption: CR0026- S No Scale  
Camera Model: Canon EOS M50  
Focal Length: 15.00mm  
Shutter Speed: 1/20



Photo #: IMG0084.jpg  
Caption: CR0030 - E Scale  
Camera Model: Canon EOS M50  
Focal Length: 15.00mm  
Shutter Speed: 1/100

**Kingscliff Public School Archival Recording**  
**EMM Consulting Pty Ltd | Luke Kirkwood | 12/04/22**



Photo #: IMG0085.jpg  
Caption: CR0030 - N Scale  
Camera Model: Canon EOS M50  
Focal Length: 15.00mm  
Shutter Speed: 1/60



Photo #: IMG0086.jpg  
Caption: CR0030 - S Scale  
Camera Model: Canon EOS M50  
Focal Length: 15.00mm  
Shutter Speed: 1/40



Photo #: IMG0087.jpg  
Caption: CR0030 - W Scale  
Camera Model: Canon EOS M50  
Focal Length: 15.00mm  
Shutter Speed: 1/25



Photo #: IMG0088.jpg  
Caption: CR0031 - N No Scale  
Camera Model: Canon EOS M50  
Focal Length: 15.00mm  
Shutter Speed: 1/40



Photo #: IMG0089.jpg  
Caption: CR0031 - S No Scale  
Camera Model: Canon EOS M50  
Focal Length: 15.00mm  
Shutter Speed: 1/30



Photo #: IMG0090.jpg  
Caption: CR0034 - NE No Scale  
Camera Model: Canon EOS M50  
Focal Length: 15.00mm  
Shutter Speed: 1/80

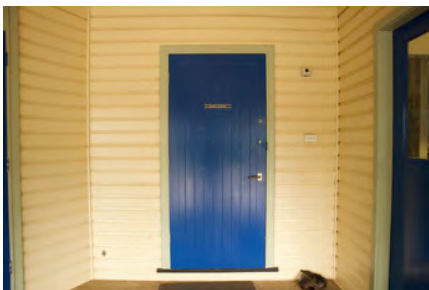


Photo #: IMG0091.jpg  
Caption: CR0034 - looking towards CR0018  
Camera Model: Canon EOS M50  
Focal Length: 15.00mm  
Shutter Speed: 1/8



Photo #: IMG0092.jpg  
Caption: CR9001 - N  
Camera Model: Canon EOS M50  
Focal Length: 15.00mm  
Shutter Speed: 1/20



Photo #: IMG0093.jpg  
Caption: CR9001 - N  
Camera Model: Canon EOS M50  
Focal Length: 15.00mm  
Shutter Speed: 1/13



Photo #: IMG0094.jpg  
Caption: CR9001 - SW  
Camera Model: Canon EOS M50  
Focal Length: 15.00mm  
Shutter Speed: 1/20



Photo #: IMG0095.jpg  
Caption: CR9002 - NE  
Camera Model: Canon EOS M50  
Focal Length: 15.00mm  
Shutter Speed: 1/30



Photo #: IMG0096.jpg  
Caption: CR9002 - SW  
Camera Model: Canon EOS M50  
Focal Length: 15.00mm  
Shutter Speed: 1/25

**Kingscliff Public School Archival Recording**  
**EMM Consulting Pty Ltd | Luke Kirkwood | 12/04/22**



Photo #: IMG0097.jpg  
Caption: CR9003 - NE  
Camera Model: Canon EOS M50  
Focal Length: 15.00mm  
Shutter Speed: 1/25



Photo #: IMG0098.jpg  
Caption: CR9003 - NW  
Camera Model: Canon EOS M50  
Focal Length: 15.00mm  
Shutter Speed: 1/15



Photo #: IMG0099.jpg  
Caption: CR9003 - SE  
Camera Model: Canon EOS M50  
Focal Length: 15.00mm  
Shutter Speed: 1/13



Photo #: IMG0100.jpg  
Caption: CR9003 - SW  
Camera Model: Canon EOS M50  
Focal Length: 15.00mm  
Shutter Speed: 1/20



Photo #: IMG0101.jpg  
Caption: Entry to CR9003  
Camera Model: Canon EOS M50  
Focal Length: 15.00mm  
Shutter Speed: 1/80



Photo #: IMG0102.jpg  
Caption: External - Art Detail #4  
Camera Model: Canon EOS M50  
Focal Length: 17.00mm  
Shutter Speed: 1/125



Photo #: IMG0103.jpg  
Caption: External - Detail of Boot Scrubber  
at bottom of stairs to CR0034  
Camera Model: Canon EOS M50  
Focal Length: 45.00mm  
Shutter Speed: 1/160

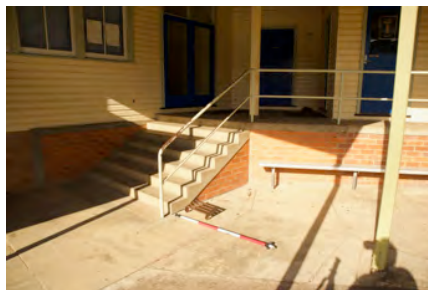


Photo #: IMG0104.jpg  
Caption: External - Detail of Boot Scrubber  
at bottom of stairs to CR0034  
Camera Model: Canon EOS M50  
Focal Length: 15.00mm  
Shutter Speed: 1/320



Photo #: IMG0105.jpg  
Caption: External - Detail of Boot Scrubber  
at bottom of stairs to CR0034  
Camera Model: Canon EOS M50  
Focal Length: 45.00mm  
Shutter Speed: 1/160



Photo #: IMG0106.jpg  
Caption: External - North west along  
southern side of western arm of building  
Camera Model: Canon EOS M50  
Focal Length: 15.00mm  
Shutter Speed: 1/160



Photo #: IMG0107.jpg  
Caption: External - South along western side  
of southern arm of building  
Camera Model: Canon EOS M50  
Focal Length: 15.00mm  
Shutter Speed: 1/200



Photo #: IMG0108.jpg  
Caption: External - North towards CR0004 &  
CR0006  
Camera Model: Canon EOS M50  
Focal Length: 17.00mm  
Shutter Speed: 1/160

**Kingscliff Public School Archival Recording**  
**EMM Consulting Pty Ltd | Luke Kirkwood | 12/04/22**



Photo #: IMG0109.jpg  
Caption: External - East towards CR0009 & CR0011  
Camera Model: Canon EOS M50  
Focal Length: 17.00mm  
Shutter Speed: 1/160



Photo #: IMG0110.jpg  
Caption: External - East towards CR0034  
Camera Model: Canon EOS M50  
Focal Length: 17.00mm  
Shutter Speed: 1/250



Photo #: IMG0111.jpg  
Caption: External - North towards north western arm of building  
Camera Model: Canon EOS M50  
Focal Length: 17.00mm  
Shutter Speed: 1/200



Photo #: IMG0112.jpg  
Caption: External - North towards north western arm of building  
Camera Model: Canon EOS M50  
Focal Length: 17.00mm  
Shutter Speed: 1/200



Photo #: IMG0113.jpg  
Caption: External - Northeast towards CR0034  
Camera Model: Canon EOS M50  
Focal Length: 17.00mm  
Shutter Speed: 1/200



Photo #: IMG0114.jpg  
Caption: External - East towards CR0022 & CR0024  
Camera Model: Canon EOS M50  
Focal Length: 15.00mm  
Shutter Speed: 1/100



Photo #: IMG0115.jpg  
Caption: External - South east towards CR0026 & CR0031  
Camera Model: Canon EOS M50  
Focal Length: 15.00mm  
Shutter Speed: 1/125



Photo #: IMG0116.jpg  
Caption: External - North along western side of southern arm of building  
Camera Model: Canon EOS M50  
Focal Length: 15.00mm  
Shutter Speed: 1/250

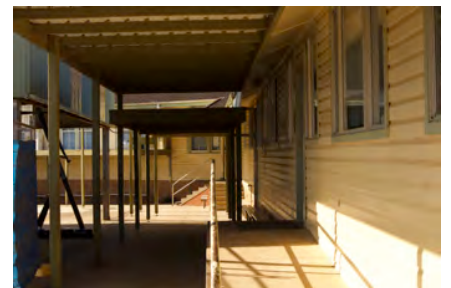


Photo #: IMG0117.jpg  
Caption: External - North along western side of southern arm of building  
Camera Model: Canon EOS M50  
Focal Length: 44.00mm  
Shutter Speed: 1/200

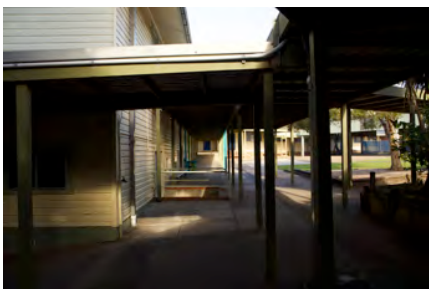


Photo #: IMG0118.jpg  
Caption: External - South east along southern side of western arm of building  
Camera Model: Canon EOS M50  
Focal Length: 18.00mm  
Shutter Speed: 1/160



Photo #: IMG0119.jpg  
Caption: External - South east along southern side of western arm of building  
Camera Model: Canon EOS M50  
Focal Length: 18.00mm  
Shutter Speed: 1/125



Photo #: IMG0120.jpg  
Caption: External - South east along southern side of western arm of building  
Camera Model: Canon EOS M50  
Focal Length: 15.00mm  
Shutter Speed: 1/200

**Kingscliff Public School Archival Recording**  
**EMM Consulting Pty Ltd | Luke Kirkwood | 12/04/22**



Photo #: IMG0121.jpg  
 Caption: External - South towards CR0003  
 Camera Model: Canon EOS M50  
 Focal Length: 29.00mm  
 Shutter Speed: 1/160



Photo #: IMG0122.jpg  
 Caption: External - South towards CR0003  
 Camera Model: Canon EOS M50  
 Focal Length: 29.00mm  
 Shutter Speed: 1/160



Photo #: IMG0123.jpg  
 Caption: External - South towards CR0005  
 Camera Model: Canon EOS M50  
 Focal Length: 29.00mm  
 Shutter Speed: 1/160



Photo #: IMG0124.jpg  
 Caption: External - South towards CR0008  
 Camera Model: Canon EOS M50  
 Focal Length: 29.00mm  
 Shutter Speed: 1/200



Photo #: IMG0125.jpg  
 Caption: External - South towards CR0012  
 Camera Model: Canon EOS M50  
 Focal Length: 29.00mm  
 Shutter Speed: 1/250



Photo #: IMG0126.jpg  
 Caption: External - South towards CR0012  
 Camera Model: Canon EOS M50  
 Focal Length: 45.00mm  
 Shutter Speed: 1/200



Photo #: IMG0127.jpg  
 Caption: External - South towards CR0012  
 Camera Model: Canon EOS M50  
 Focal Length: 20.00mm  
 Shutter Speed: 1/250



Photo #: IMG0128.jpg  
 Caption: Original School Signage on CR0012  
 Camera Model: Canon EOS M50  
 Focal Length: 45.00mm  
 Shutter Speed: 1/200



Photo #: IMG0129.jpg  
 Caption: External - Southeast towards CR0015  
 Camera Model: Canon EOS M50  
 Focal Length: 15.00mm  
 Shutter Speed: 1/400



Photo #: IMG0130.jpg  
 Caption: External - West towards CR0012  
 Camera Model: Canon EOS M50  
 Focal Length: 15.00mm  
 Shutter Speed: 1/320



Photo #: IMG0131.jpg  
 Caption: External - Plaque #1 detail left of entrance to CR0012  
 Camera Model: Canon EOS M50  
 Focal Length: 45.00mm  
 Shutter Speed: 1/100



Photo #: IMG0132.jpg  
 Caption: External - Plaque #1 detail left of entrance to CR0012  
 Camera Model: Canon EOS M50  
 Focal Length: 37.00mm  
 Shutter Speed: 1/80

**Kingscliff Public School Archival Recording**  
**EMM Consulting Pty Ltd | Luke Kirkwood | 12/04/22**



Photo #: IMG0133.jpg  
Caption: External - West towards CR0015  
Camera Model: Canon EOS M50  
Focal Length: 15.00mm  
Shutter Speed: 1/250



Photo #: IMG0134.jpg  
Caption: External - Southwest along southern side of CR0015  
Camera Model: Canon EOS M50  
Focal Length: 15.00mm  
Shutter Speed: 1/200



Photo #: IMG0135.jpg  
Caption: External - North towards CR0015  
Camera Model: Canon EOS M50  
Focal Length: 15.00mm  
Shutter Speed: 1/200



Photo #: IMG0136.jpg  
Caption: External - Northwest towards CR0018  
Camera Model: Canon EOS M50  
Focal Length: 15.00mm  
Shutter Speed: 1/250



Photo #: IMG0137.jpg  
Caption: External - West towards CR0021 and CR0023  
Camera Model: Canon EOS M50  
Focal Length: 15.00mm  
Shutter Speed: 1/250



Photo #: IMG0138.jpg  
Caption: External - North along eastern side of CR0021 & CR0023  
Camera Model: Canon EOS M50  
Focal Length: 15.00mm  
Shutter Speed: 1/250



Photo #: IMG0139.jpg  
Caption: External - South along eastern side of CR0023 & CR0030  
Camera Model: Canon EOS M50  
Focal Length: 15.00mm  
Shutter Speed: 1/320



Photo #: IMG0140.jpg  
Caption: External - South along eastern side of CR0030  
Camera Model: Canon EOS M50  
Focal Length: 15.00mm  
Shutter Speed: 1/250



Photo #: IMG0141.jpg  
Caption: External - West towards CR0030  
Camera Model: Canon EOS M50  
Focal Length: 15.00mm  
Shutter Speed: 1/320



Photo #: IMG0142.jpg  
Caption: External - West along southern side of CR0030  
Camera Model: Canon EOS M50  
Focal Length: 15.00mm  
Shutter Speed: 1/320



Photo #: IMG0143.jpg  
Caption: External - North west towards CR0030  
Camera Model: Canon EOS M50  
Focal Length: 15.00mm  
Shutter Speed: 1/320



Photo #: IMG0144.jpg  
Caption: External - North east towards CR0030  
Camera Model: Canon EOS M50  
Focal Length: 15.00mm  
Shutter Speed: 1/250



**Kingscliff Public School Archival Recording**  
**EMM Consulting Pty Ltd | Luke Kirkwood | 12/04/22**



Photo #: IMG0145.jpg  
Caption: External - North towards CR0030  
Camera Model: Canon EOS M50  
Focal Length: 15.00mm  
Shutter Speed: 1/250



Photo #: IMG0146.jpg  
Caption: External - Detail of drinking trough  
along southern side of CR0030  
Camera Model: Canon EOS M50  
Focal Length: 15.00mm  
Shutter Speed: 1/200



Photo #: IMG0147.jpg  
Caption: External - 'Bubblers' sign on  
southern side of CR0030  
Camera Model: Canon EOS M50  
Focal Length: 44.00mm  
Shutter Speed: 1/160



Photo #: IMG0148.jpg  
Caption: External - North east towards  
CR0030  
Camera Model: Canon EOS M50  
Focal Length: 15.00mm  
Shutter Speed: 1/320



Photo #: IMG0149.jpg  
Caption: External - East towards CR0001 &  
CR0002  
Camera Model: Canon EOS M50  
Focal Length: 18.00mm  
Shutter Speed: 1/250



Photo #: IMG0150.jpg  
Caption: External - East towards CR9001 &  
CR9002  
Camera Model: Canon EOS M50  
Focal Length: 18.00mm  
Shutter Speed: 1/100



Photo #: IMG0151.jpg  
Caption: External - South west along  
western side of CR9001  
Camera Model: Canon EOS M50  
Focal Length: 18.00mm  
Shutter Speed: 1/25

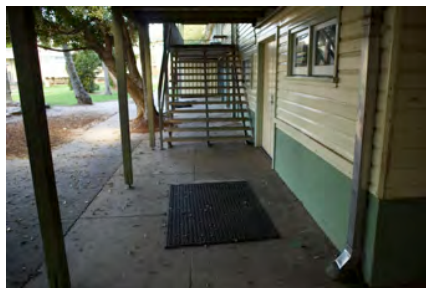


Photo #: IMG0152.jpg  
Caption: External - East towards CR0035  
Camera Model: Canon EOS M50  
Focal Length: 18.00mm  
Shutter Speed: 1/50



Photo #: IMG0153.jpg  
Caption: External - North west down stairs  
CR0035  
Camera Model: Canon EOS M50  
Focal Length: 15.00mm  
Shutter Speed: 1/30



Photo #: IMG0154.jpg  
Caption: External - East towards CR0007  
Camera Model: Canon EOS M50  
Focal Length: 18.00mm  
Shutter Speed: 1/100



Photo #: IMG0155.jpg  
Caption: External - South from CR0007  
towards door to CR0003  
Camera Model: Canon EOS M50  
Focal Length: 15.00mm  
Shutter Speed: 1/25



Photo #: IMG0156.jpg  
Caption: External - South from CR0007  
towards door to CR0008  
Camera Model: Canon EOS M50  
Focal Length: 15.00mm  
Shutter Speed: 1/80

**Kingscliff Public School Archival Recording**  
**EMM Consulting Pty Ltd | Luke Kirkwood | 12/04/22**



Photo #: IMG0157.jpg  
Caption: External - South from CR0007  
towards door to CR0005  
Camera Model: Canon EOS M50  
Focal Length: 15.00mm  
Shutter Speed: 1/60



Photo #: IMG0158.jpg  
Caption: External - West from CR0007  
towards CR0035  
Camera Model: Canon EOS M50  
Focal Length: 18.00mm  
Shutter Speed: 1/80

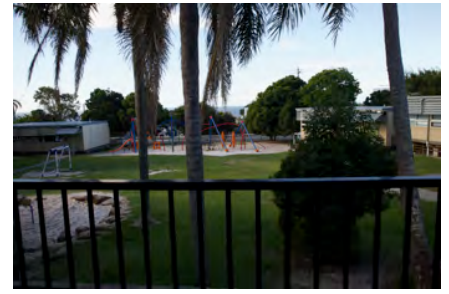


Photo #: IMG0159.jpg  
Caption: External - North towards Pacific  
Ocean from CR0007  
Camera Model: Canon EOS M50  
Focal Length: 18.00mm  
Shutter Speed: 1/250



Photo #: IMG0160.jpg  
Caption: External - South towards CR9005  
Camera Model: Canon EOS M50  
Focal Length: 15.00mm  
Shutter Speed: 1/80



Photo #: IMG0161.jpg  
Caption: External - South towards CR9005  
Camera Model: Canon EOS M50  
Focal Length: 15.00mm  
Shutter Speed: 1/80



Photo #: IMG0162.jpg  
Caption: External - Southwest towards  
CR9003  
Camera Model: Canon EOS M50  
Focal Length: 15.00mm  
Shutter Speed: 1/125



Photo #: IMG0163.jpg  
Caption: External - Southwest towards door  
of CR9005  
Camera Model: Canon EOS M50  
Focal Length: 15.00mm  
Shutter Speed: 1/30



Photo #: IMG0164.jpg  
Caption: External - Southeast view of  
CR9005  
Camera Model: Canon EOS M50  
Focal Length: 15.00mm  
Shutter Speed: 1/0

---

Appendix B

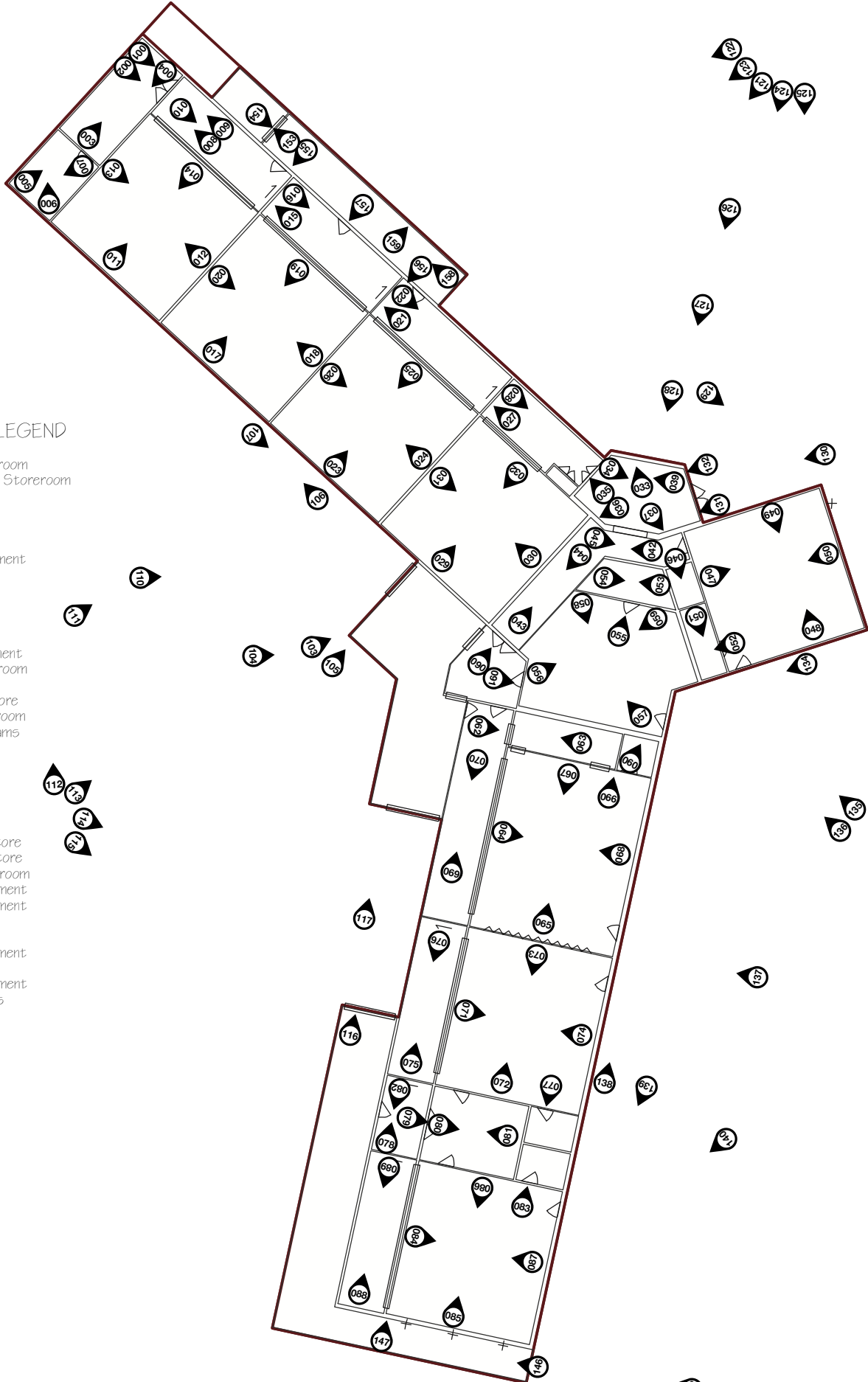
## Photographic base plans

---

DRAFT

# 4054 - Kingscliff Public School

## General Learning (B00C) - Ground Floor (Room Function)



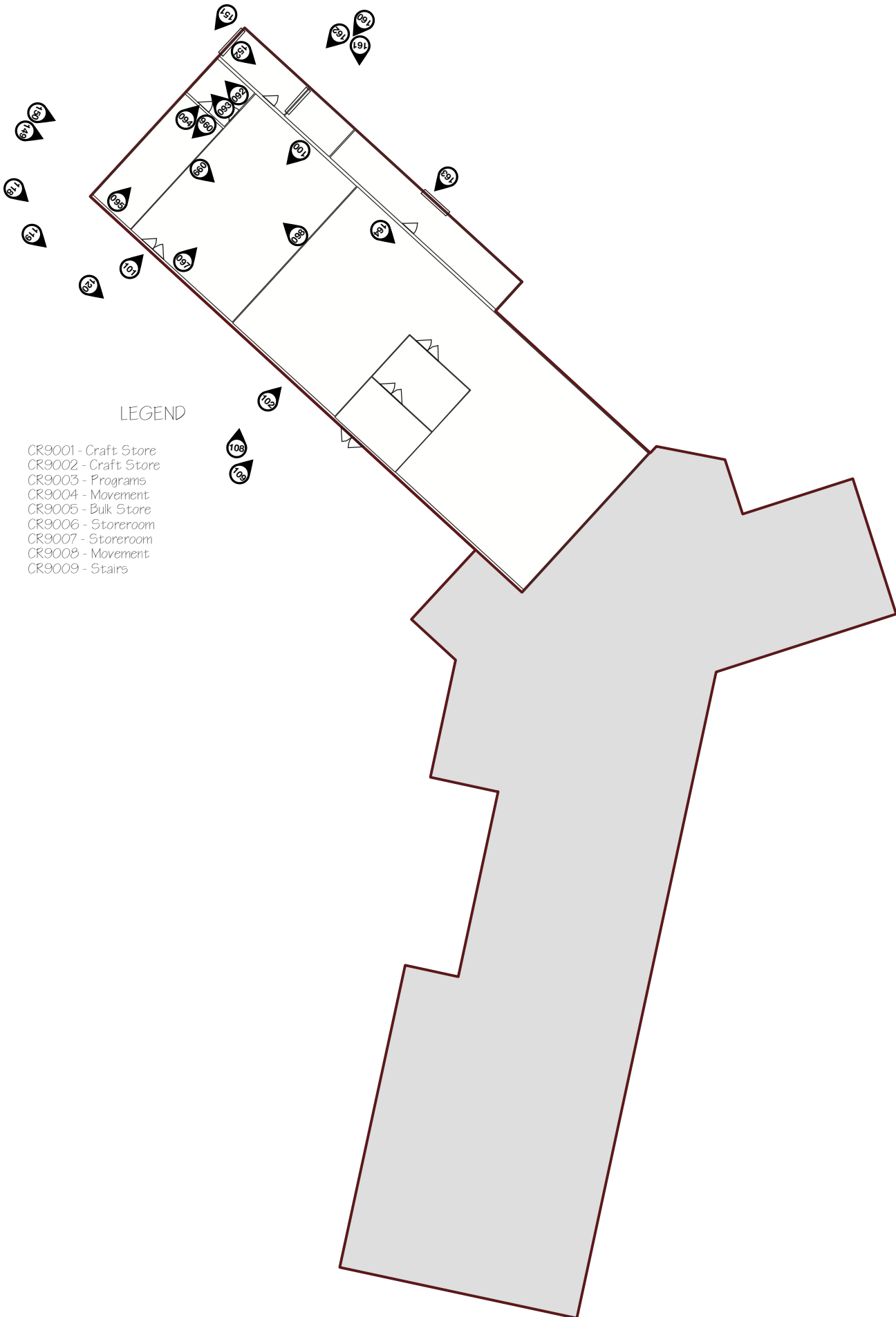
### LEGEND

- CRO001 - Storeroom
- CRO002 - Music Storeroom
- CRO003 - PAA
- CRO004 - HB
- CRO005 - PAA
- CRO006 - HB
- CRO007 - Movement
- CRO008 - PAA
- CRO009 - HB
- CRO010 - PAA
- CRO011 - HB
- CRO012 - PAA
- CRO013 - Movement
- CRO014 - Storeroom
- CRO015 - HB
- CRO016 - HB Store
- CRO017 - Storeroom
- CRO018 - Programs
- CRO019 - Toilet
- CRO020 - PAA
- CRO021 - HB
- CRO022 - PAA
- CRO023 - HB
- CRO024 - PAA
- CRO025 - HB Store
- CRO026 - HB Store
- CRO027 - Storeroom
- CRO028 - Movement
- CRO029 - Movement
- CRO030 - HB
- CRO031 - PAA
- CRO032 - Movement
- CRO033 - EDB
- CRO034 - Movement
- CRO035 - Stairs



1:279

4054 - Kingscliff Public School  
General Learning (B00C) - Basement 1 (Room Function)



LEGEND

- CR9001 - Craft Store
- CR9002 - Craft Store
- CR9003 - Programs
- CR9004 - Movement
- CR9005 - Bulk Store
- CR9006 - Storeroom
- CR9007 - Storeroom
- CR9008 - Movement
- CR9009 - Stairs



DRAFT