



Maker space

## Frequently asked questions

### What has been delivered at Killarney Heights Public School?

A new two-storey building with seven new innovative learning spaces and a specialist teaching room has been completed. The building also has four group rooms, an amphitheatre, breakout learning areas, and maker spaces.

### When will the school move into the new facilities?

The new classrooms will be ready to use for staff on Monday 31 August, with the first day for students on Tuesday 1 September 2020.

### When will the demountable teaching spaces be removed?

The demountable teaching spaces are due for removal over the September school holidays.

### What are innovative learning spaces?

Innovative learning spaces are flexible and well-resourced so that teachers can design a wide range of learning activities to develop the skills and knowledge of students.

### What is a specialist teaching room?

A room that enable specialist teaching activities to be accommodated outside the student's homebase environment.

## Contact us

For more information about this project contact School Infrastructure NSW:

**Website:** [schoolinfrastructure.nsw.gov.au](http://schoolinfrastructure.nsw.gov.au)

**Email:** [schoolinfrastructure@det.nsw.edu.au](mailto:schoolinfrastructure@det.nsw.edu.au)

**Phone:** 1300 482 651

For information about school activities and operations, contact the school directly:

**Principal:** Gillian Tegg

**Website:** [killarneyh-p.schools.nsw.gov.au](http://killarneyh-p.schools.nsw.gov.au)

**Email:** [killarneyh-p.school@det.nsw.edu.au](mailto:killarneyh-p.school@det.nsw.edu.au)

**Phone:** 02 9451 9547

# Killarney Heights Public School Upgrade

## Welcome

Upgrade at Killarney Heights Public School



## Welcome to your school

We're excited your new school facilities are ready for you to use. The upgrade to your school includes:



7 new permanent learning and teaching spaces



A specialist teaching room



New maker spaces



4 new group rooms

Thank you for your patience during construction. We are thrilled to deliver this project for your school community and hope you enjoy your new spaces.

# Message from your Principal

We are excited about the next chapter in our school's history with the opening of our new homebase building. We are proud of the new, purpose-built facilities that enable flexible, technology-enhanced, futures-focused and collaborative teaching and learning for KHPS students and staff. It will serve us well as we continue our focus of 'bringing excellence in education within a unique bilingual setting.'

As a dynamic and inclusive school community, we are committed to delivering quality learning experiences in an engaging and supportive environment where all students, as well as teachers, have the opportunity to realise their potential.

Our teaching and support staff are enthusiastic about the exciting possibilities new learning spaces play in inspiring excellence, innovation, opportunity and success for all our students.

I'd like to thank our community – students, staff, parents and local residents – for their patience during construction. I am sure you'll be as pleased as we are with the outcome.

Et maintenant, place au bilinguisme dans cet environnement idéal.

**Gillian Tegg, Principal**

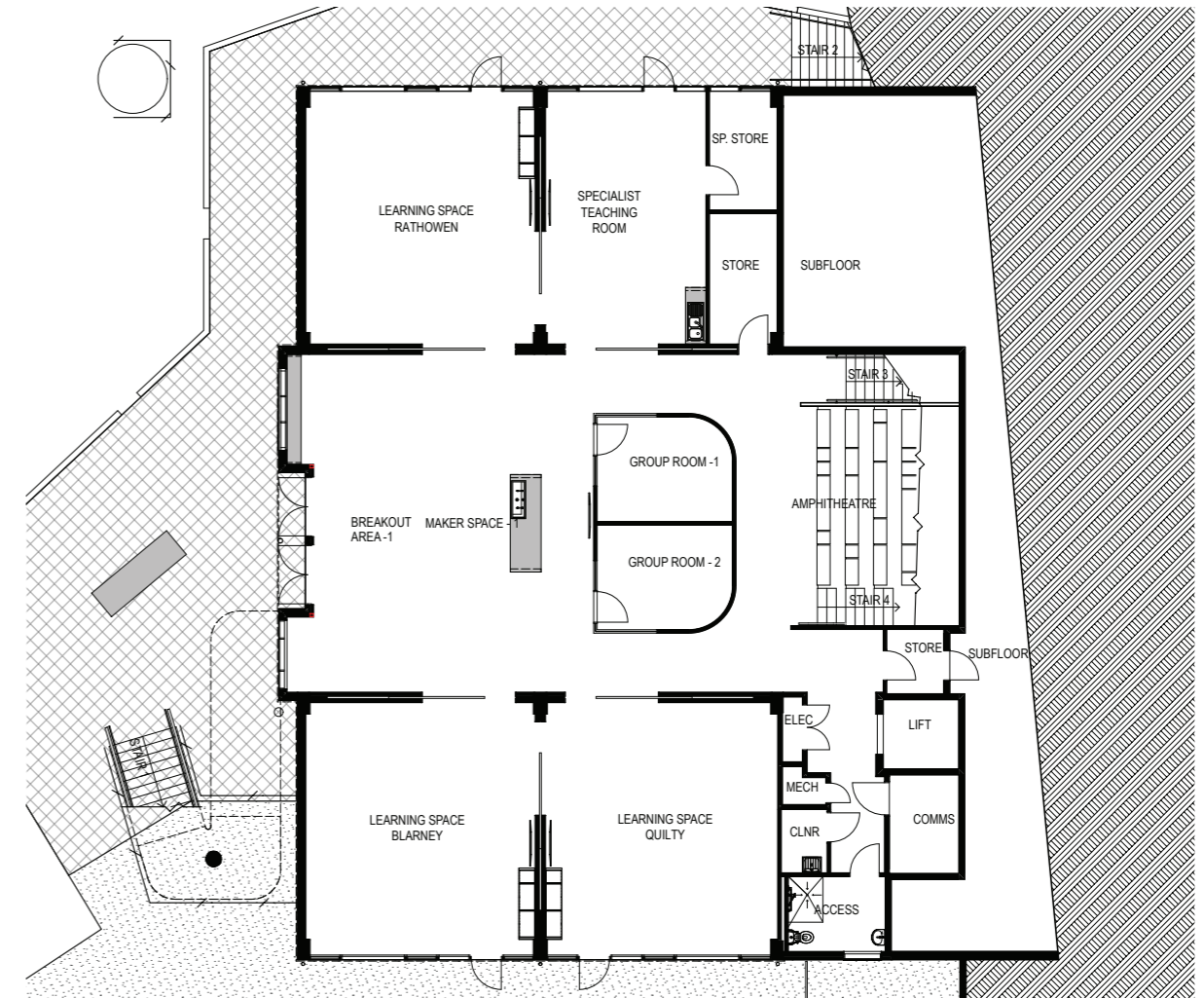
## What to expect

Students will transition into their new learning hub from September 2020. The floor plans opposite show the classroom allocation for Terms 3 and 4, 2020 (Rathowen, Blarney, Quilty, Tipperary, Dublin, Galway and Newry). It also provides details of other features in the building, such as the amphitheatre and breakout spaces.

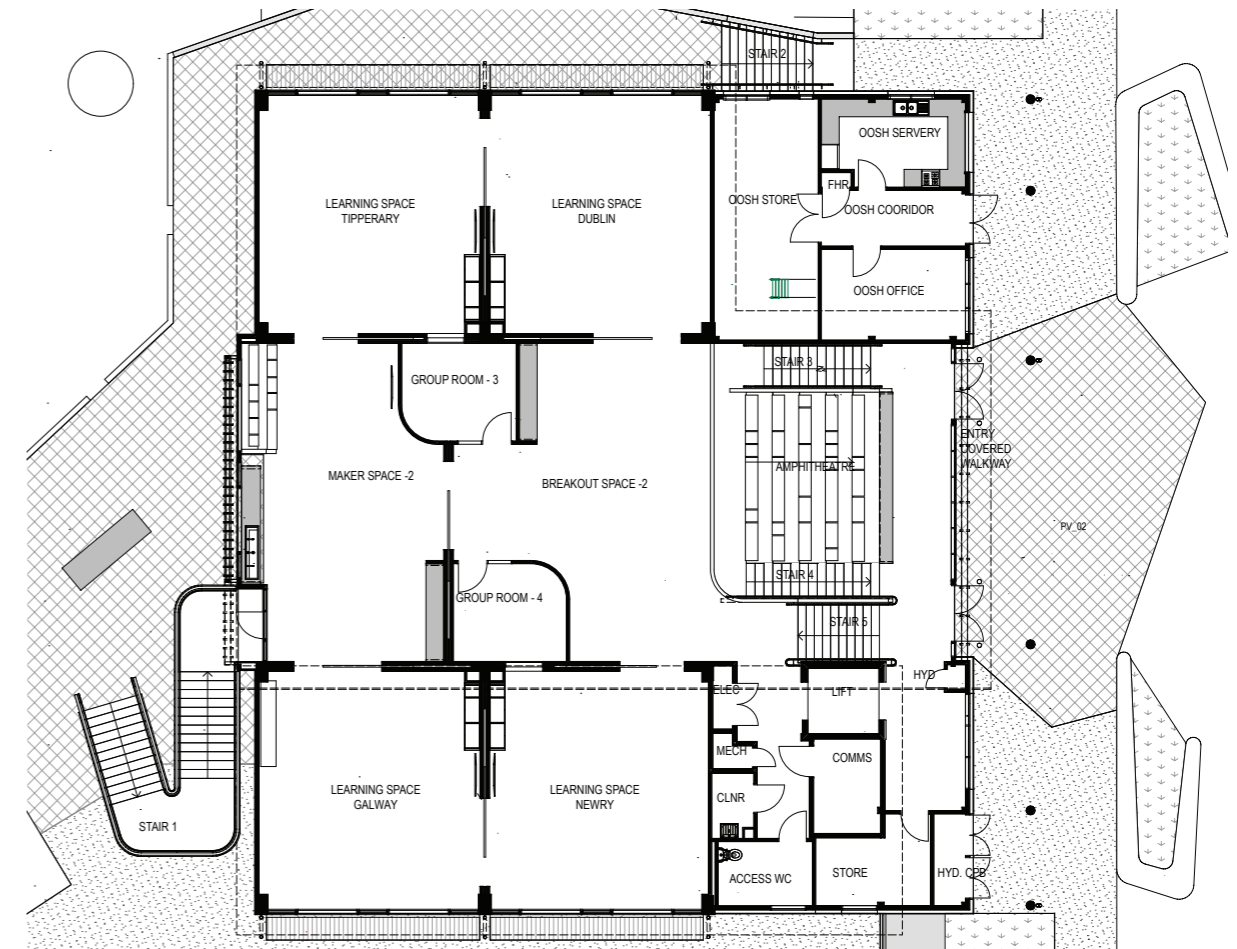
The image below provides an example of one of the innovative learning spaces:



Innovative learning space



Ground floor classroom map



First floor classroom map