

Dilapidation Report

KENT ROAD PUBLIC SCHOOL

KENT ROAD, MARSFIELD

18087

SINSW



Table of Contents

PRELIMINARY II

1 DILAPIDATION REPORT 3

 1.1 INTRODUCTION 3

 1.2 PHOTOGRAPH REPORT 3

 1.3 PHOTOGRAPH DESCRIPTIONS..... 3

Preliminary

Version Control

| Version Number | Version Description | Approved by |
|----------------|---------------------|-----------------|
| 0 | Issued for Use | Project Manager |
| | | |
| | | |
| | | |

Distribution

| Copy | Recipient |
|------|------------------------|
| 1 | Contract Administrator |
| | |
| | |
| | |

1 Dilapidation Report

1.1 Introduction

This Dilapidation Report follows a visual inspection of the properties and infrastructure adjacent to Kent Road Public School. The document contains high resolution photographs as a record of the areas inspected prior to Works commencing at Kent Road Public School.

Exclusions from the report:

- List any exclusions here.

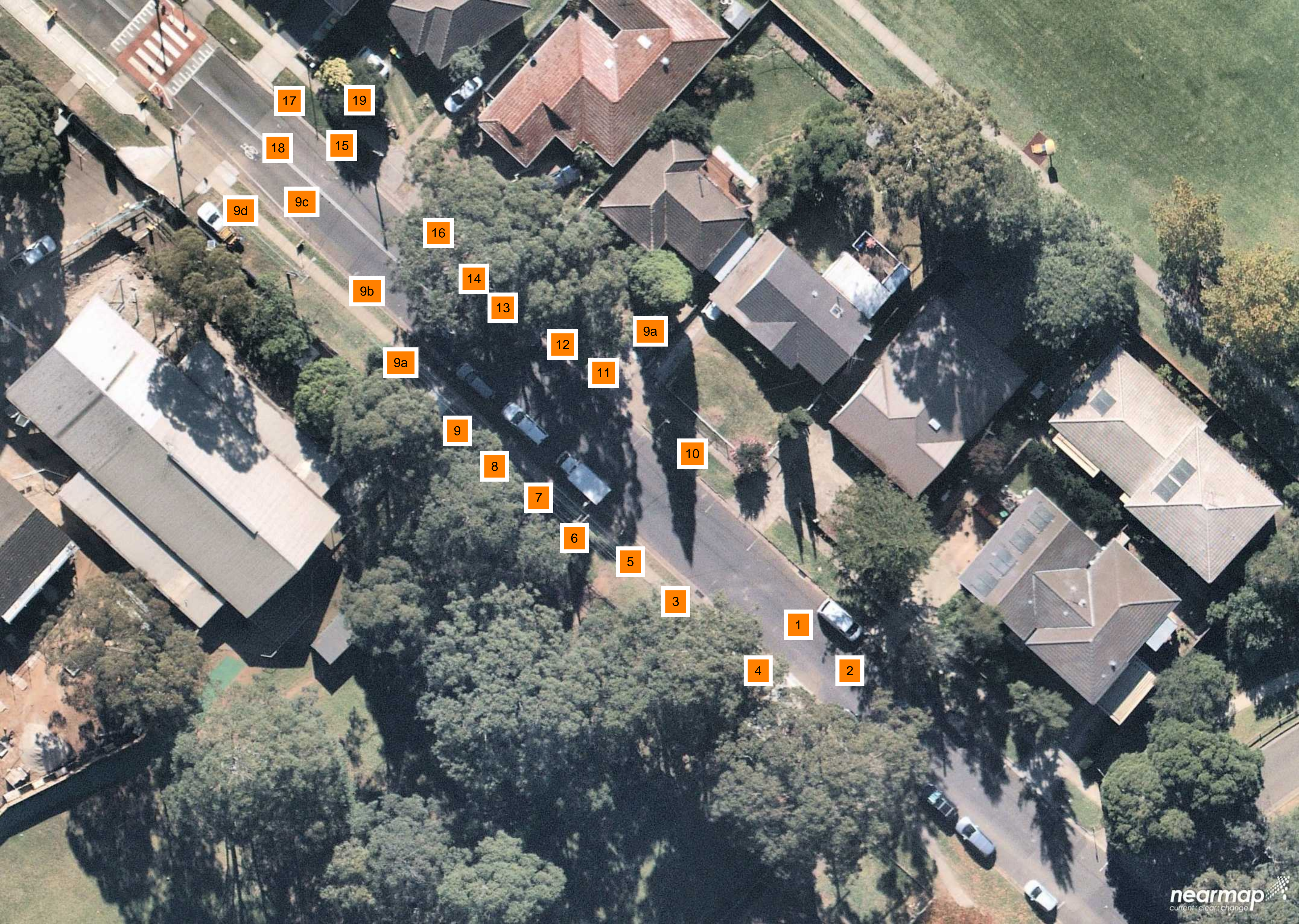
1.2 Photograph Report

This section contains photographs of the construction site location. Comprehensive visual coverage of defects and damage we have found in the areas surveyed avoids the requirement for an extensive description.

- **Overview map attached section below**

1.3 Photograph Descriptions

- **Attached section below**



17

19

18

15

9d

9c

16

14

9b

13

9a

12

9a

11

9

10

8

7

6

5

3

1

4

2



32

31

30

28

33

34

35

27

36

37

26

25

23

24

22

21

20

40

1



39

39



1. General Conditions of Kent Road - South



2. General Conditions of Kent Road - North



3. General Condition of Footpath - North



4. General Conditions of Footpath South



5. General Conditions of footpath
Multiple cracks in concrete pavement 1-10mm. Concrete sinking present



6. General Conditions of footpath
Multiple cracks in concrete pavement 1-10mm. Concrete sinking present



7. General Conditions of footpath
Multiple cracks in concrete pavement 1-10mm



8. General Conditions of footpath
Multiple cracks in concrete pavement 1-10mm



9. General Conditions of footpath
Multiple cracks in concrete pavement 1-10mm



9a. General Conditions of footpath
Multiple cracks in concrete pavement 1-10mm



9a. General Conditions of footpath
Multiple cracks in concrete pavement 1-10mm



9b. General Conditions of Kerb and Gutter
Multiple crack 1-15mm



9b. General Conditions of Kerb and Gutter
Multiple crack 1-15mm



9c. General Conditions of Kent Road
Sinking present and extensive small cracks



9d. General Conditions of temporary / existing cross over



10. General Conditions of Ker, Gutter and neighboring driveways

Multiple cracks 1-20mm. Medium- Large pot holes in asphalt. Concrete sinking present



11. General Conditions of footpath
Multiple cracks in concrete pavement 1-10mm. Concrete sinking present



12. General Conditions of Kerb and gutter
Multiple cracks in concrete pavement 1-20mm



13. General Conditions of Kerb and gutter
Multiple cracks 1-20mm. Medium- Large pot holes in asphalt



14. General Conditions of Kerb and Gutter
Multiple cracks 1-20mm. Medium- Large pot holes in asphalt



15a. General Conditions of Kerb and Gutter
Multiple cracks 1-20mm



15b. General Conditions of Kerb and Gutter
Multiple cracks 1-20mm



16. General Conditions of Kerb and Gutter / Neighboring driveways
Multiple cracks 1-20mm. Concrete sinking present



17. General Conditions of footpath and neighboring driveways
Service location spray paint present. Small cracks in pavement



18. General Conditions of Kent Road
Sinking present and extensive small cracks



19. General Conditions of footpath
Service location spray paint present. Small cracks in pavement



20a. General Conditions of footpath and neighboring driveways
Cracks in driveway 1-10mm. Concrete sinking present



20b. General Conditions of footpath and neighboring driveways
Cracks in driveway 1-10mm. Concrete sinking present
Conditions of street South



21. General Conditions of footpath (FIRE HYDRANT SERVICE)
Service location spray paint present. Small cracks in pavement. Patches present



22. General Conditions of Kerb and Gutter
Multiple cracks 1-20mm. Concrete sinking present. Spray paint visible



23. General Conditions of footpath and neighboring driveways
Cracks in driveway 1-10mm. Concrete sinking present



24. Wire hanging down from post.



25. General Conditions of Kent Road - North
Severe sinking and cracking. Multiple asphalt patches present



25. General Conditions of Kent Road - North
Severe sinking and cracking. Multiple asphalt patches present



27. General Conditions of footpath
Multiple cracks 1-20mm. Concrete sinking present



28a. General condition of Kent Road - North



28b. General condition of Kent Road - South



30. General Conditions of barrier
Scratches and dents evident



31. General Conditions of concrete island
Cats eye broken. Multiple scratches



32. General Conditions of round about.
Generally ok. Minor wear and tear



32. General Conditions of round about.
Generally ok. Minor wear and tear



32. General Conditions of round about.
Generally ok. Minor wear and tear



33. General Conditions neighboring driveway
Concrete cracking 1-15mm. Minor concrete shrinkage present



33. General Conditions neighboring driveway / Kerb and Gutter
Concrete cracking 1-15mm. Minor concrete shrinkage present



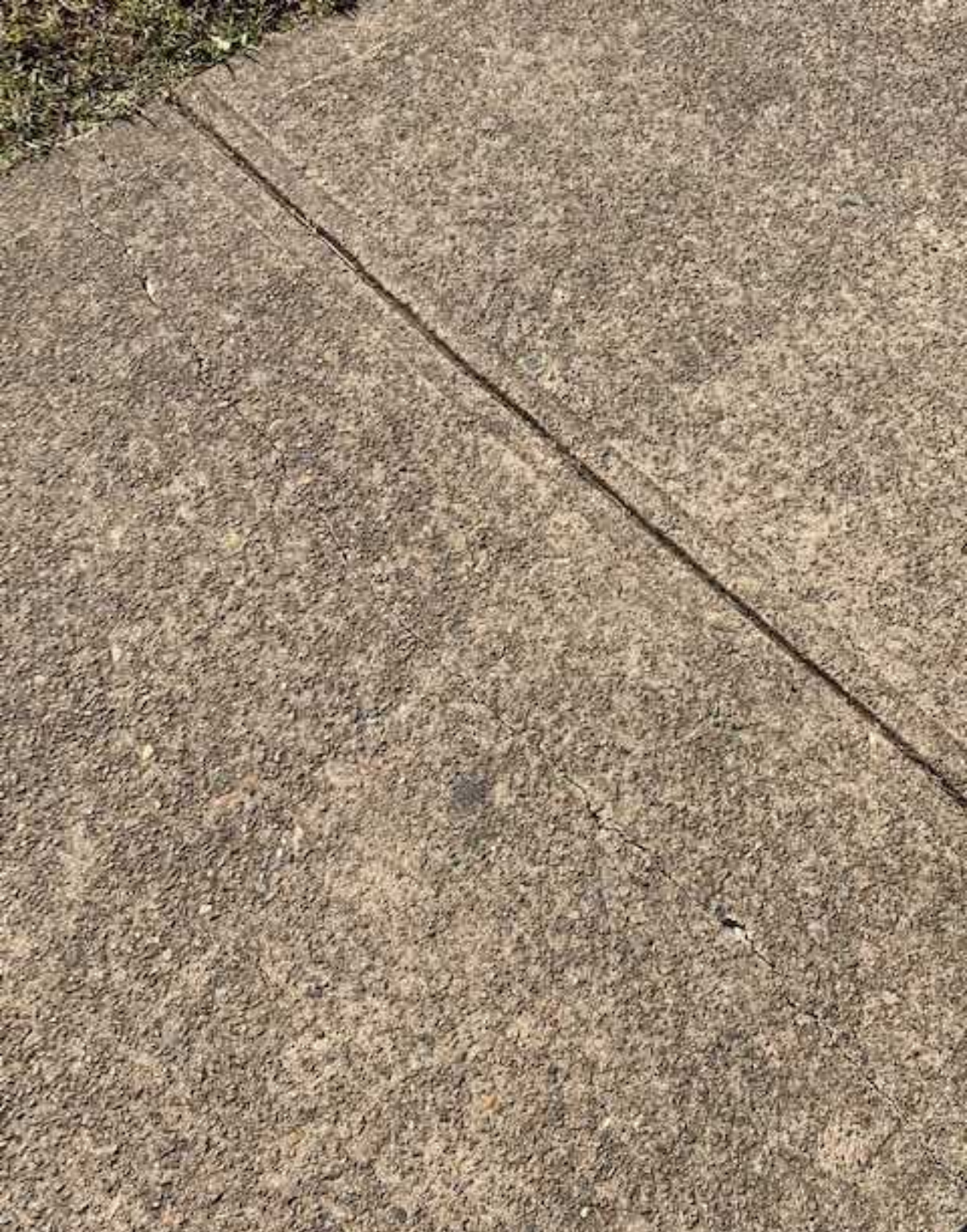
34a. General Conditions of footpath
Multiple cracks in concrete pavement 1-10mm. Concrete sinking present



34b. General Conditions of footpath
Multiple cracks in concrete pavement 1-10mm. Concrete sinking present



34c. General Conditions of footpath
Multiple cracks in concrete pavement 1-10mm. Concrete sinking present



34d. General Conditions of footpath
Multiple cracks in concrete pavement 1-10mm. Concrete sinking present



34e. General Conditions of footpath
Multiple cracks in concrete pavement 1-10mm. Concrete sinking present



34f. General Conditions of footpath
Multiple cracks in concrete pavement 1-10mm. Concrete sinking present



35. Broken concrete cover over drain



36. General Conditions of Kerb and Gutter
Multiple cracks in concrete 1-15mm. Concrete sinking present



37a. General Conditions of turf in proposed cross over area
Areas of turf no growth. Section of new turf (Not established completely yet)



37b. General Conditions of turf in proposed cross over area
Areas of turf no growth. Section of new turf (Not established completely yet)



38. Communication pits. Not to be affected



39. General condition of proposed construction parking area



39. General condition of proposed construction parking area



39. General Conditions of proposed construction parking area



39. General condition of proposed construction parking area



39. General condition of proposed construction parking area



39. General condition of proposed construction parking area



39. General Conditions of proposed construction parking area



39. General Conditions of proposed construction parking area



39. General Conditions of proposed construction parking area



39. General Conditions of proposed construction parking area



39. General Conditions of proposed construction parking area



39. General Conditions of proposed construction parking access - Adelphi Road



40. General Condition of existing pedestrian crossing
Multiple cracks 1-10mm



40. General Condition of existing pedestrian crossing
Multiple cracks 1-10mm



40. General Condition of existing pedestrian crossing
Cats eye missing



40. General Condition of existing pedestrian crossing
Multiple cracks 1-10mm



40. General Condition of existing pedestrian crossing



40. General Condition of existing pedestrian crossing
Multiple cracks 1-10mm



40. General Condition of existing pedestrian crossing
Multiple cracks 1-10mm



40. General Condition of existing pedestrian crossing
Multiple cracks 1-10mm. Concrete chipped



40. General Condition of existing pedestrian crossing
Multiple cracks 1-10mm. Ramp sunken approx 25mm



40. General Condition of existing pedestrian crossing
Multiple cracks 1-10mm. Ramp sunken approx 50mm



40. General Condition of existing pedestrian crossing
Barriers have been bent