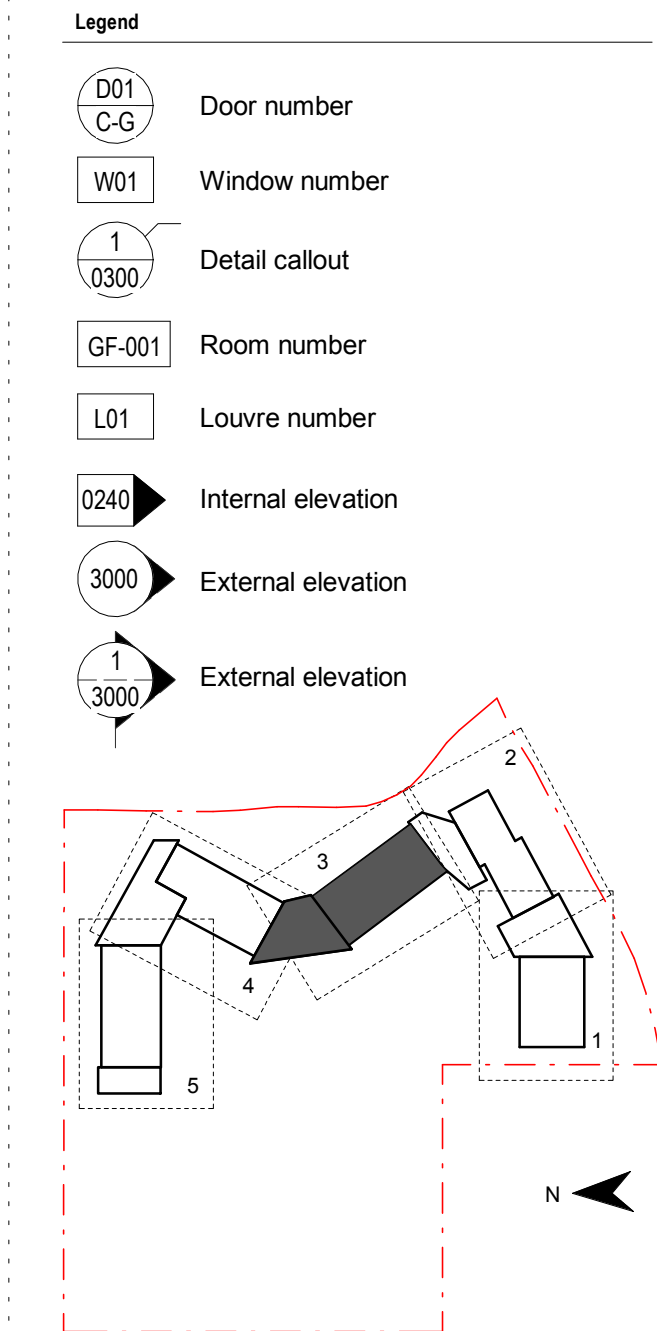
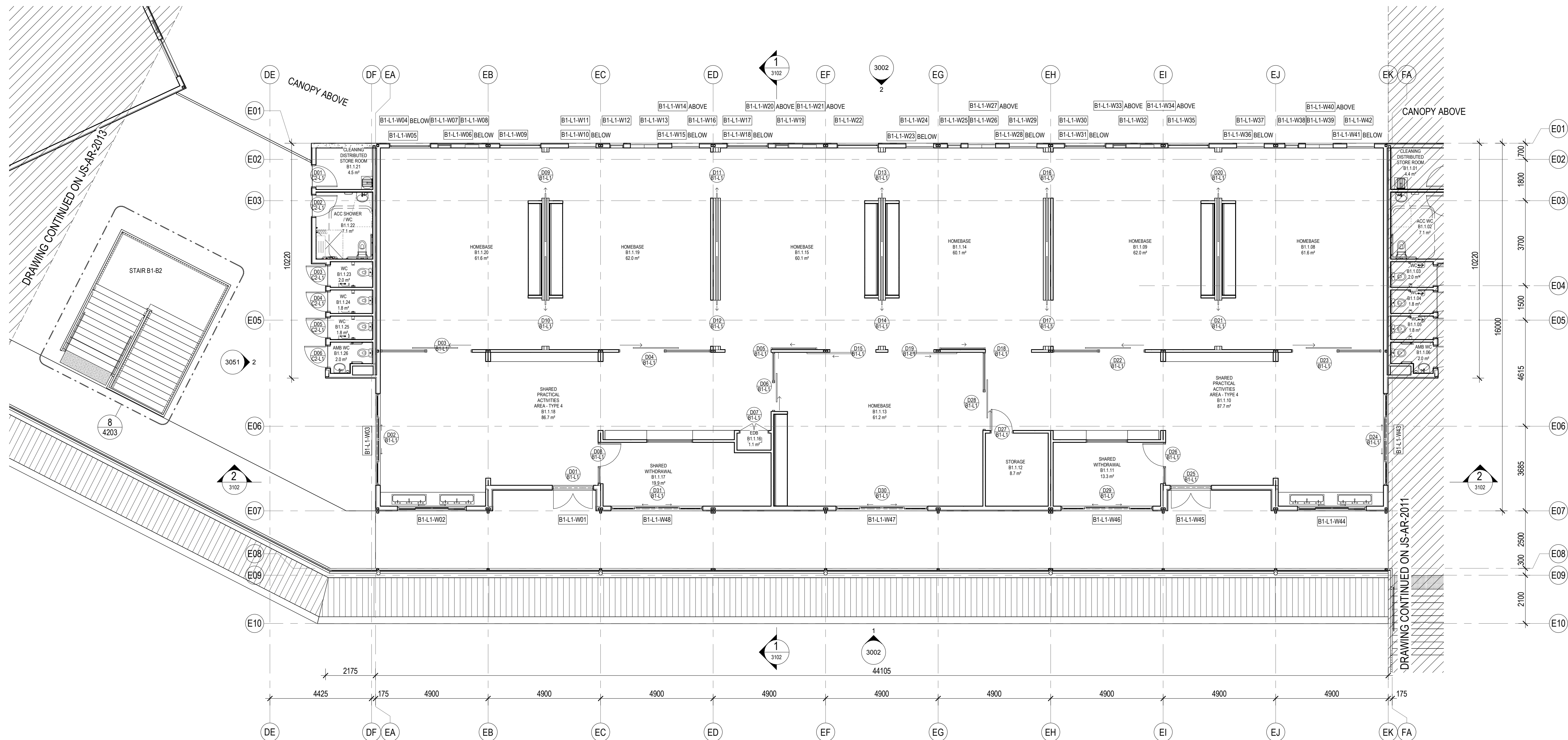


General Notes:
1. This drawing is the copyright of Group GSA Pty Ltd and may not be altered, reproduced or transmitted in any form or by any means in part or in whole without the written permission of Group GSA
2. Drawings to be printed in colour.
3. Do not scale drawings. Dimensions govern.
4. All dimensions are in millimetres unless noted otherwise.
5. All dimensions shall be verified on site before proceeding.
6. Any areas indicated on this sheet are approximate and indicative only.

Amendments		
Issue	Description	Date
A	FOR COORDINATION	27.03.2019
B	DRAFT DETAILED DESIGN	24.04.2019
C	DRAFT DETAIL DESIGN	01.05.2019
D	PROGRESS ISSUE	10.05.2019
E	SSD SUBMISSION	31.05.2019



Contractor
RICHARD CROOKES CONSTRUCTIONS

Client
NSW GOVERNMENT Education

GROUP GSA
Group GSA Pty Ltd ABN 76 002 113 779
Level 7, 80 William St East Sydney NSW
Australia 2011
www.groupgsa.com

T +612 9361 4144 F +612 9332 3458
architecture interior design urban design landscape
nom architect M. Sheldon 9990

Project Title
JORDAN SPRINGS PUBLIC SCHOOL

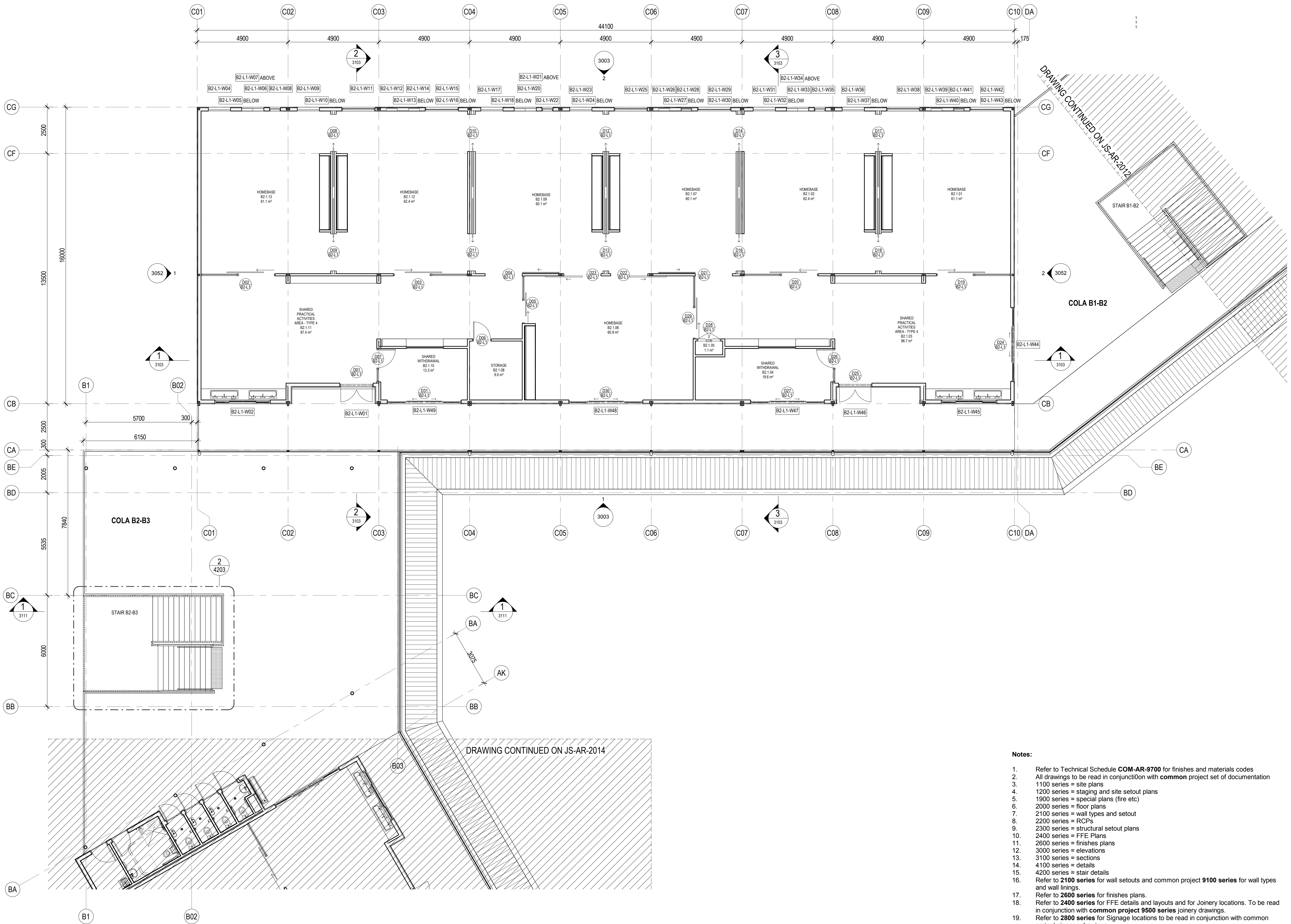
Drawing Title

FLOOR PLAN - L1 - BLOCK B1 - PART 3

Scale @ A1			As Indicated
Drawing Created (date)	10/05/19		
Drawing Created (by)	NS		
Plotted and checked by	FT		
Verified	MP		
Approved	MB		
Project No	Drawing No	Issue	
180646	JS-AR-2012	E	

Notes:

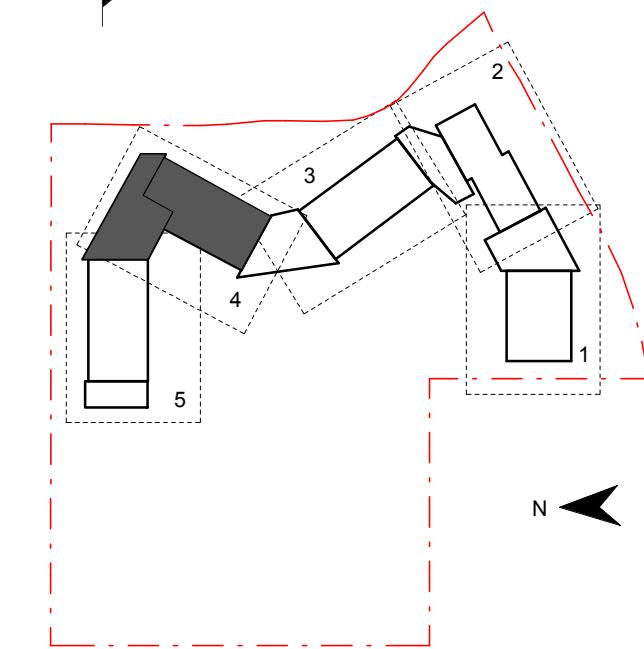
1. Refer to Technical Schedule **COM-AR-9700** for finishes and materials codes
2. All drawings to be read in conjunction with **common** project set of documentation
3. 1100 series = site plans
4. 1200 series = staging and site setout plans
5. 1900 series = special plans (fire etc)
6. 2000 series = floor plans
7. 2100 series = wall types and setout
8. 2200 series = RCPs
9. 2300 series = structural setout plans
10. 2400 series = FFE Plans
11. 2600 series = finishes plans
12. 3000 series = elevations
13. 3100 series = sections
14. 4100 series = details
15. 4200 series = stair details
16. Refer to **2100 series** for wall setouts and common project **9100 series** for wall types and wall linings.
17. Refer to **2600 series** for finishes plans.
18. Refer to **2400 series** for FFE details and layouts and for Joinery locations. To be read in conjunction with **common project 9500 series** joinery drawings.
19. Refer to **2800 series** for Signage locations to be read in conjunction with common project signage drawings.
20. Refer to **8100 series** for window schedule and **3300 series** for facade set outs. Refer to common project 9200 series for window types, sizes and sill heights.
21. Refer to **5100 series** for special area drawings showing detailed room setouts.
22. Refer to door schedule **AR-8000** for door types and sizes and common project **9200 series** for door types and door hardware schedule **AR-8100**.
23. Refer to services engineers details for services layout and details.
24. Refer also to Civil engineers drawings and Landscape drawings for External works
25. Refer to Modscape documentation for all details to modular buildings



General Notes:
1. This drawing is the copyright of Group GSA Pty Ltd and may not be altered, reproduced or transmitted in any form or by any means in part or in whole without the written permission of Group GSA.
2. Drawings to be printed in colour.
3. Do not scale drawings. Dimensions govern.
4. All dimensions are in millimetres unless noted otherwise.
5. All dimensions shall be verified on site before proceeding.
6. Any areas indicated on this sheet are approximate and indicative only.

Amendments		
Issue	Description	Date
A	FOR COORDINATION	27.03.2019
B	DRAFT DETAILED DESIGN	24.04.2019
C	DRAFT DETAILED DESIGN	01.05.2019
D	PROGRESS ISSUE	10.05.2019
E	SSD SUBMISSION	31.05.2019

Legend	
	Door number
	Window number
	Detail callout
	Room number
	Louvre number
	Internal elevation
	External elevation
	External elevation



Contractor
RICHARD CROOKES CONSTRUCTIONS

Client
 Education

GROUP GSA
Group GSA Pty Ltd ABN 76 002 113 779
Level 7, 80 William St East Sydney NSW
Australia 2011
www.groupgsa.com

T +612 9361 4144 F +612 9332 3458
architecture interior design urban design landscape
nom architect M. Sheldon 3990

Project Title
JORDAN SPRINGS PUBLIC SCHOOL

Drawing Title

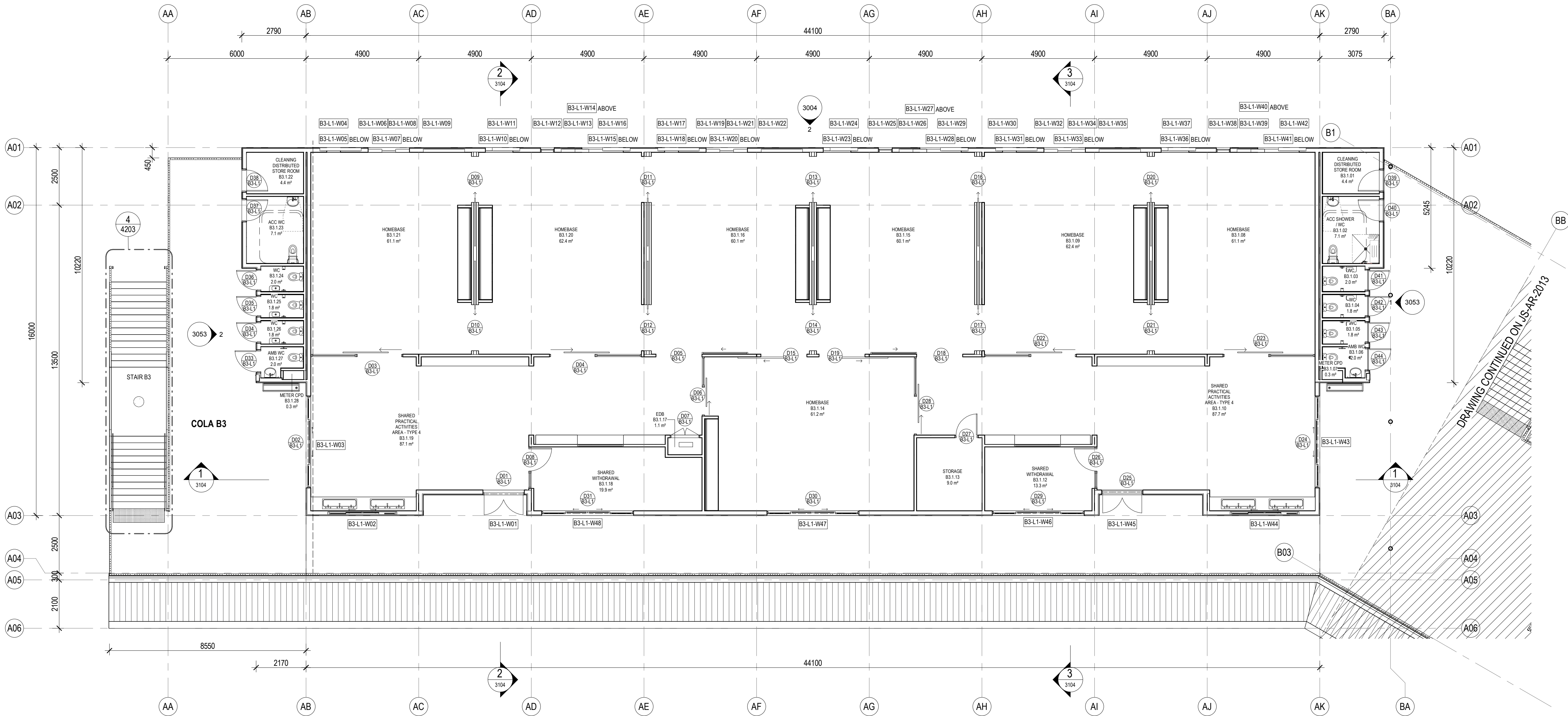
FLOOR PLAN - L1 - BLOCK B2 - PART 4

Scale @ A1		As indicated
Drawing Created (date)		10/05/19
Drawing Created (by)		FC
Plotted and checked by		FT
Verified		MP
Approved		MB
Project No	Drawing No	Issue

180646 JS-AR-2013 E

- Notes:**
- Refer to Technical Schedule **COM-AR-9700** for finishes and materials codes
 - All drawings to be read in conjunction with **common** project set of documentation
 - 1100 series = site plans
 - 1200 series = staging and site setout plans
 - 1900 series = special plans (fire etc)
 - 2000 series = floor plans
 - 2100 series = wall types and setout
 - 2200 series = RCPs
 - 2300 series = structural setout plans
 - 2400 series = FFE Plans
 - 2600 series = finishes plans
 - 3000 series = elevations
 - 3100 series = sections
 - 4100 series = details
 - 4200 series = stair details
 - Refer to **2100 series** for wall setouts and common project **9100 series** for wall types and wall linings.
 - Refer to **2600 series** for finishes plans.
 - Refer to **2400 series** for FFE details and layouts and for Joinery locations. To be read in conjunction with **common project 9500 series** joinery drawings.
 - Refer to **2800 series** for Signage locations to be read in conjunction with common project signage drawings.
 - Refer to **8100 series** for window schedule and **3300 series** for facade set outs. Refer to common project 9200 series for window types, sizes and sill heights.
 - Refer to **5100 series** for special area drawings showing detailed room setouts.
 - Refer to door schedule **AR-8000** for door types and sizes and common project **9200 series** for door types and door hardware schedule **AR-8100**.
 - Refer to services engineers details for services layout and details.
 - Refer also to Civil engineers drawings and Landscape drawings for External works
 - Refer to Modscape documentation for all details to modular buildings

5/3/2019 3:38:39 PM



General Notes:
1. This drawing is the copyright of Group GSA Pty Ltd and may not be altered, reproduced or transmitted in any form or by any means in part or in whole without the written permission of Group GSA.
2. Drawings to be printed in colour.
3. Do not scale drawings. Dimensions govern.
4. All dimensions are in millimetres unless noted otherwise.
5. All dimensions shall be verified on site before proceeding.
6. Any areas indicated on this sheet are approximate and indicative only.

Amendments		
Issue	Description	Date
A	FOR COORDINATION	27.03.2019
B	DRAFT DETAILED DESIGN	24.04.2019
C	DRAFT DETAIL DESIGN	01.05.2019
D	PROGRESS ISSUE	10.05.2019
E	SSD SUBMISSION	31.05.2019

Legend

- D01 C-G Door number
- W01 Window number
- 1 0300 Detail callout
- CF-001 Room number
- L01 Louvre number
- 0240 Internal elevation
- 3000 External elevation
- 1 3000 External elevation

DRAWING CONTINUED ON JS-AR-2013

N

Contractor
RICHARD CROOKES CONSTRUCTIONS

Client
NSW GOVERNMENT Education

GROUP GSA

Group GSA Pty Ltd ABN 76 002 113 779
Level 7, 80 William St East Sydney NSW
Australia 2011
www.groupgsa.com
T +612 9361 4144 F +612 9332 3458
architecture interior design urban design landscape
nom architect M. Sheldon 5990

Project Title
JORDAN SPRINGS PUBLIC SCHOOL

Drawing Title

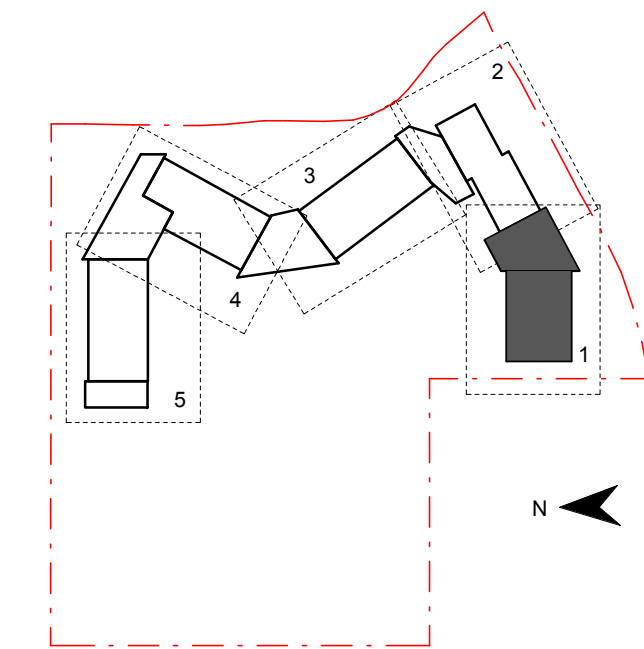
FLOOR PLAN - L1 - BLOCK B3 - PART 5

Scale @ A1		As indicated
Drawing Created (date)		10/05/19
Drawing Created (by)		FC
Plotted and checked by		FT
Verified		MP
Approved		MB
Project No	Drawing No	Issue
180646	JS-AR-2014	E

- Notes:
- Refer to Technical Schedule **COM-AR-9700** for finishes and materials codes
 - All drawings to be read in conjunction with **common** project set of documentation
 - 1100 series = site plans
 - 1200 series = staging and site setout plans
 - 1900 series = special plans (fire etc)
 - 2000 series = floor plans
 - 2100 series = wall types and setout
 - 2200 series = RCPs
 - 2300 series = structural setout plans
 - 2400 series = FFE Plans
 - 2600 series = finishes plans
 - 3000 series = elevations
 - 3100 series = sections
 - 4100 series = details
 - 4200 series = stair details
 - Refer to **2100 series** for wall setouts and common project **9100 series** for wall types and wall linings.
 - Refer to **2600 series** for finishes plans.
 - Refer to **2400 series** for FFE details and layouts and for Joinery locations. To be read in conjunction with **common project 9500 series** joinery drawings.
 - Refer to **2800 series** for Signage locations to be read in conjunction with common project signage drawings.
 - Refer to **8100 series** for window schedule and **3300 series** for facade set outs. Refer to common project 9200 series for window types, sizes and sill heights.
 - Refer to **5100 series** for special area drawings showing detailed room setouts.
 - Refer to door schedule **AR-8000** for door types and sizes and common project **9200 series** for door types and door hardware schedule **AR-8100**.
 - Refer to services engineers details for services layout and details.
 - Refer also to Civil engineers drawings and Landscape drawings for External works
 - Refer to Modscape documentation for all details to modular buildings

General Notes:
1. This drawing is the copyright of Group GSA Pty Ltd and may not be altered, reproduced or transmitted in any form or by any means in part or in whole without the written permission of Group GSA.
2. Drawings to be printed in colour.
3. Do not scale drawings. Dimensions govern.
4. All dimensions are in millimetres unless noted otherwise.
5. All dimensions shall be verified on site before proceeding.
6. Any areas indicated on this sheet are approximate and indicative only.

Amendments		
Issue	Description	Date
A	FOR COORDINATION	27.03.2019
B	DRAFT DETAILED DESIGN	10.04.2019
C	DRAFT DETAILED DESIGN	17.04.2019
D	PROGRESS ISSUE	10.05.2019
E	SSD SUBMISSION	31.05.2019



Contractor
RICHARD CROOKES CONSTRUCTIONS

Client
NSW GOVERNMENT Education

GROUP GSA

Group GSA Pty Ltd ABN 76 002 113 779
Level 7, 80 William St East Sydney NSW
Australia 2011
www.groupgsa.com

T +612 9361 4144 F +612 9332 3458

architecture interior design urban design landscape
nom architect M. Sheldon 3990

Project Title

JORDAN SPRINGS PUBLIC SCHOOL

Drawing Title

ROOF PLAN - BLOCK C - PART 1

Scale @ A1 1 : 100

Drawing Created (date) 10/05/19

Drawing Created (by) NS

Plotted and checked by FT

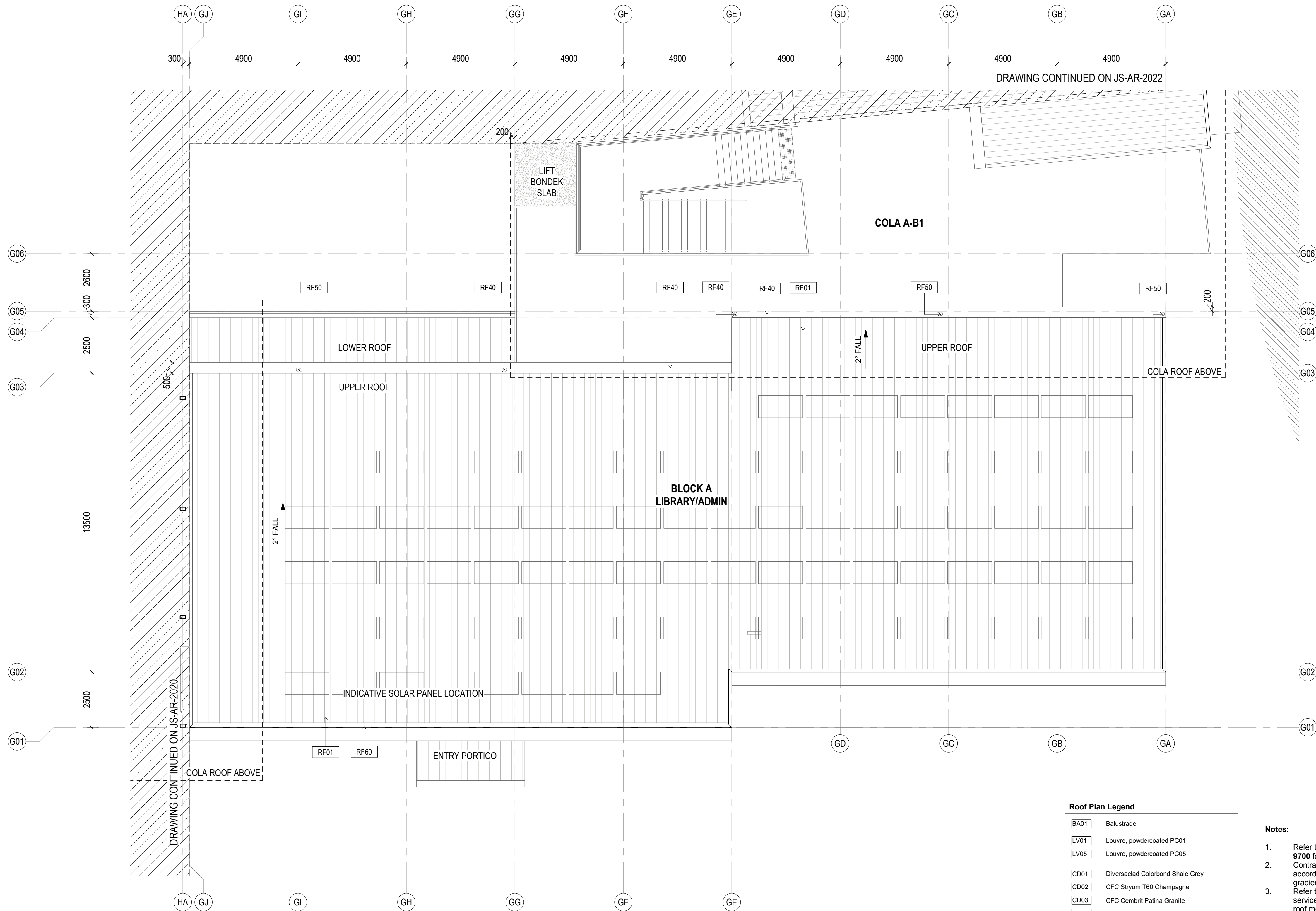
Verified MP

Approved MB

Project No Drawing No Issue

180646 JS-AR-2020 E

5/3/2019 3:38:53 PM



Roof Plan Legend

BA01	Balustrade
LV01	Louvre, powdercoated PC01
LV05	Louvre, powdercoated PC05
CD01	Diversiad Colorbond Shale Grey
CD02	CFC Styrum T60 Champagne
CD03	CFC Cembrit Patina Granite
CD40	Aluminium timber panel
CN01	Exposed concrete slab
CN02	Exposed concrete wall / column
RF01	Roof, Trimdek Colorbond Shale Grey
RF02	Roof, Trimdek Colorbond Basalt
RF10	Skylight, Fibreglass
RF40	Gutter, Colorbond Basalt
RF41	Gutter, Colorbond Shale Grey
RF50	Downpipes, Colorbond Basalt
RF51	Downpipes, Colorbond Shale Grey
RF60	Capping, Colorbond to match adjacent roof
ST10	Structure, steel painted

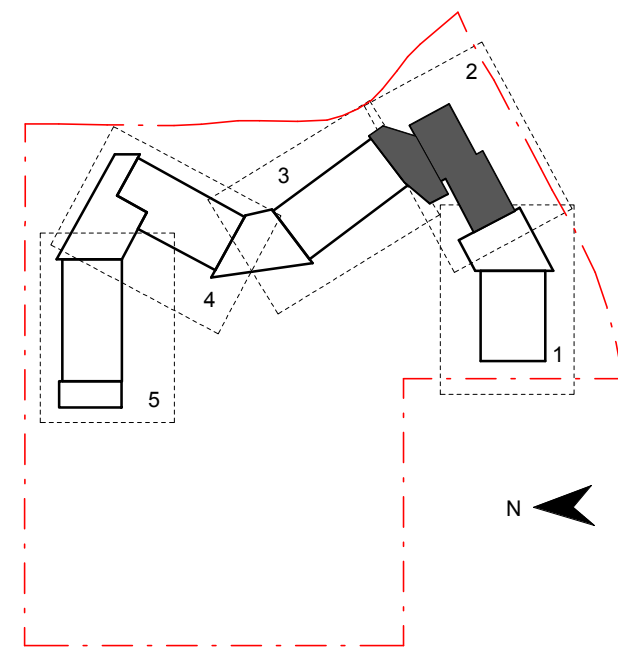
Notes:

- Refer to Technical Schedule **COM-AR-9700** for code details.
- Contractor to ensure gutter falls in accordance with AS3500.3 minimum gradient of 1:500
- Refer to services engineer's details for services layout and details. Ensure all roof mounted items colour match adjacent roof surface
- Allow for compliant roof restraint safety access requirements to all roofs.
- Roof to include exhausts, flues, vent pipes and the like with flashing trays
- Fall arrest system on all roofs to be provided by a registered installer in accordance with AN/NZS 1891: 'Industrial fall arrest systems and devices and the hierarchy of risk management.' Provide shop drawings for review.
- Provide metal leaf guards to all gutters
- All soaker trays to be max. 1.1m wide, overlap lengths to manufacturers details.
- Align all exposed flashing lapjoints to grid.
- Refer to Modscape documentation for all details to modular buildings

General Notes:
1. This drawing is the copyright of Group GSA Pty Ltd and may not be altered, reproduced or transmitted in any form or by any means in part or in whole without the written permission of Group GSA
2. Drawings to be printed in colour.
3. Do not scale drawings. Dimensions govern.
4. All dimensions are in millimetres unless noted otherwise.
5. All dimensions shall be verified on site before proceeding
6. Any areas indicated on this sheet are approximate and indicative only.

Amendments

Issue	Description	Date
A	FOR COORDINATION	27.03.2019
B	DRAFT DETAILED DESIGN	17.04.2019
C	PROGRESS ISSUE	10.05.2019
D	SSD SUBMISSION	31.05.2019



Contractor

RICHARD CROOKES
CONSTRUCTIONS

Client



GROUP GSA

Group GSA Pty Ltd ABN 76 002 113 779
Level 7, 80 William St East Sydney NSW
Australia 2011
www.groupgsa.com

T +612 9361 4144 F +612 9332 3458

architecture interior design urban design landscape
nom architect M. Sheldon 3990

Project Title

JORDAN SPRINGS
PUBLIC SCHOOL

Drawing Title

ROOF PLAN - BLOCK
A - PART 2

Scale @ A1 1 : 100

Drawing Created (date) 10/05/19

Drawing Created (by) NS

Plotted and checked by FT

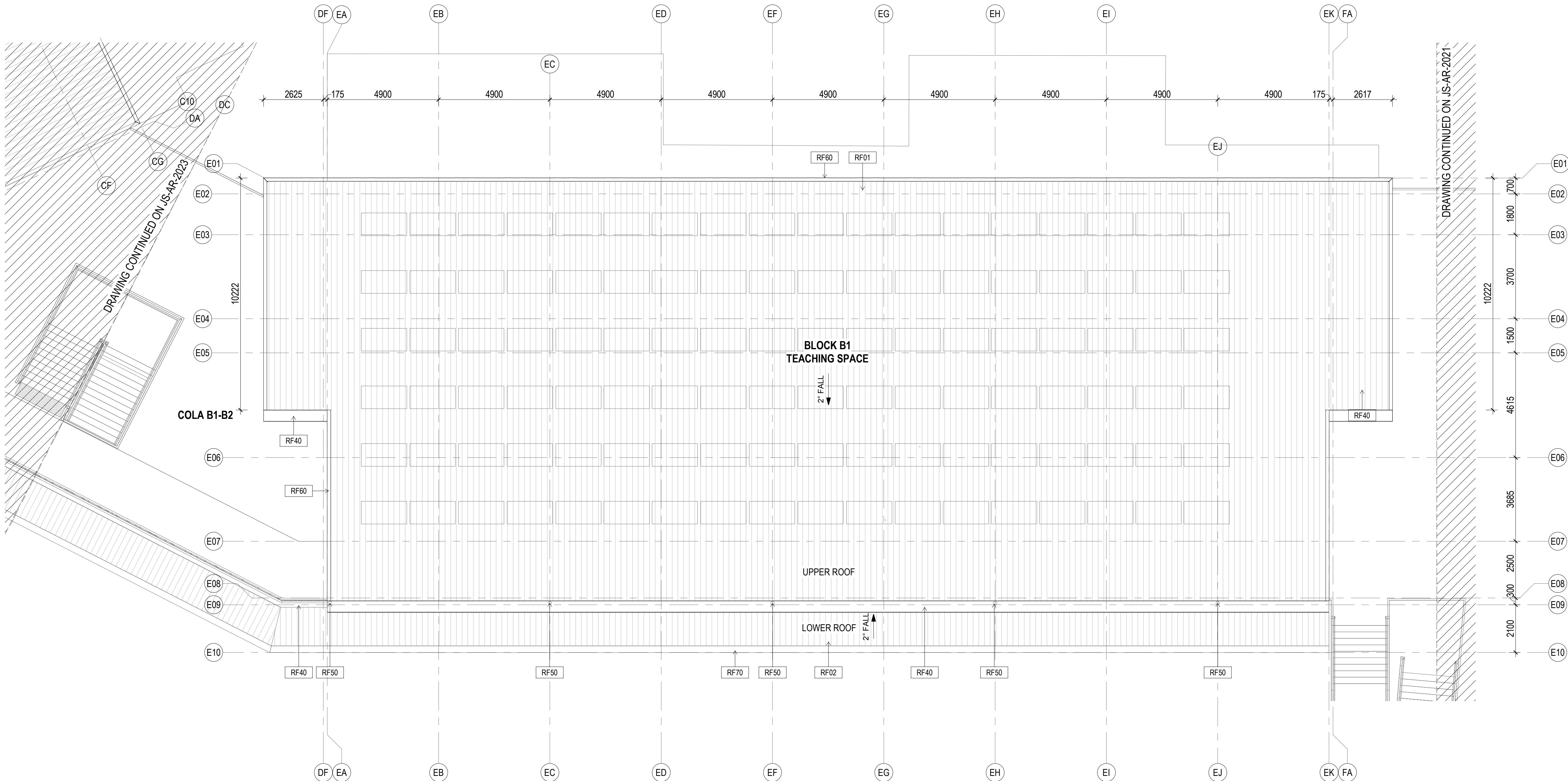
Verified MP

Approved MB

Project No Drawing No Issue

180646 JS-AR-2021 D

5/3/2019 3:30:01 PM



Roof Plan Legend

BA01	Balustrade
LV01	Louvre, powdercoated PC01
LV05	Louvre, powdercoated PC05
CD01	Diversaclad Colorbond Shale Grey
CD02	CFC Stryum T60 Champagne
CD03	CFC Cembrit Patina Granite
CD40	Aluminium timber panel
CN01	Exposed concrete slab
CN02	Exposed concrete wall / column
RF01	Roof, Trindek Colorbond Shale Grey
RF02	Roof, Trindek Colorbond Basalt
RF10	Skylight, Fibreglass
RF40	Gutter, Colorbond Basalt
RF41	Gutter, Colorbond Shale Grey
RF50	Downpipes, Colorbond Basalt
RF51	Downpipes, Colorbond Shale Grey
RF60	Capping, Colorbond to match adjacent roof
ST10	Structure, steel painted

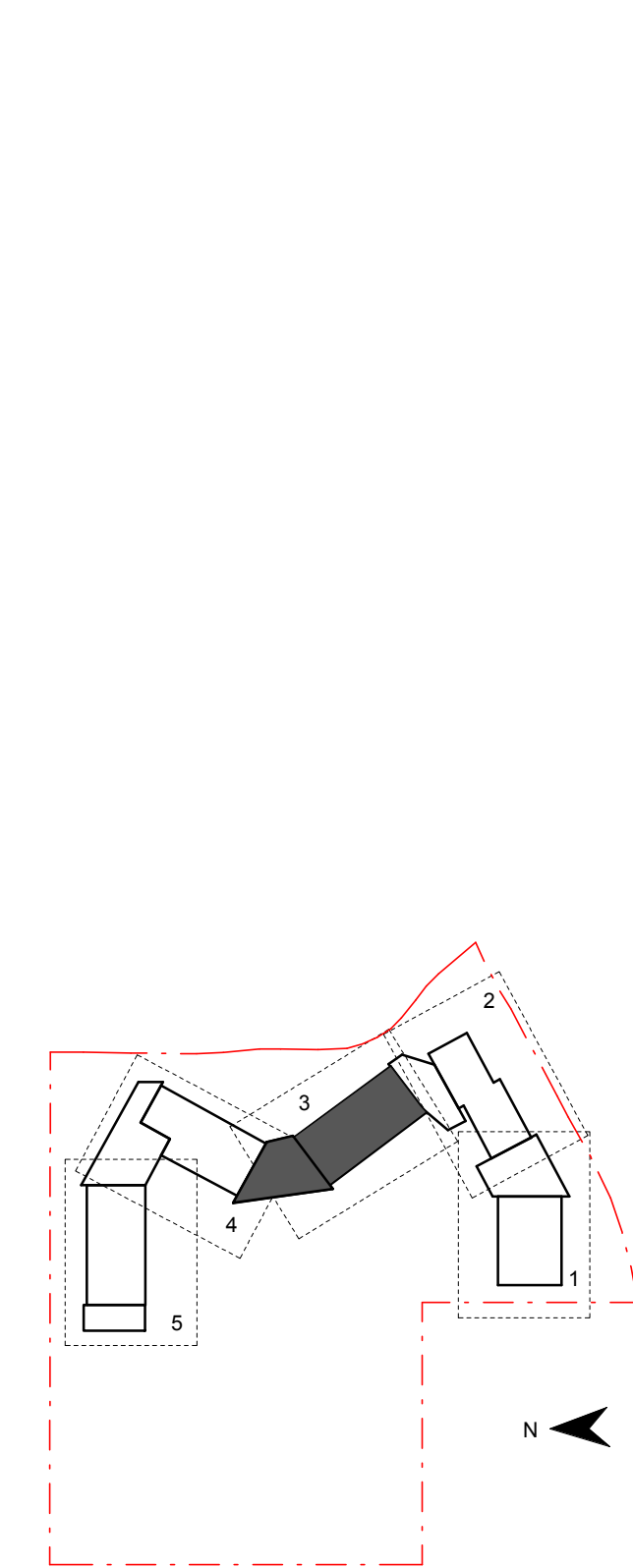
Notes:

- Refer to Technical Schedule **COM-AR-9700** for code details.
- Contractor to ensure gutter falls in accordance with AS3500.3 minimum gradient of 1:500
- Refer to services engineer's details for services layout and details. Ensure all roof mounted items colour match adjacent roof surface
- Allow for compliant roof restraint safety access requirements to all roofs.
- Roof to include exhausts, flues, vent pipes and the like with flashing trays
- Fall arrest system on all roofs to be provided by a registered installer in accordance with AN/NZS 1891: 'Industrial fall arrest systems and devices and the hierarchy of risk management.' Provide shop drawings for review.
- Provide metal leaf guards to all gutters
- All soaker trays to be max. 1.1m wide, overlap lengths to manufacturers details.
- Align all exposed flashing lapjoints to grid.
- Refer to Modscape documentation for all details to modular buildings

General Notes:
1. This drawing is the copyright of Group GSA Pty Ltd and may not be altered, reproduced or transmitted in any form or by any means in part or in whole without the written permission of Group GSA
2. Drawings to be printed in colour.
3. Do not scale drawings. Dimensions govern.
4. All dimensions are in millimetres unless noted otherwise.
5. All dimensions shall be verified on site before proceeding
6. Any areas indicated on this sheet are approximate and indicative only.

Amendments

Issue	Description	Date
A	FOR COORDINATION	27.03.2019
B	PROGRESS ISSUE	10.05.2019
C	SSD SUBMISSION	31.05.2019



Contractor

RICHARD CROOKES
CONSTRUCTIONS

Client



GROUP GSA

Group GSA Pty Ltd ABN 76 002 113 779
Level 7, 80 William St East Sydney NSW
Australia 2011
www.groupgsa.com

T +612 9361 4144 F +612 9332 3458

architecture interior design urban design landscape
nom architect M. Sheldon 3990

Project Title

JORDAN SPRINGS
PUBLIC SCHOOL

Drawing Title

ROOF PLAN - BLOCK
B1 - PART 3

Scale @ A1

1 : 100

Drawing Created (date)

10/05/19

Drawing Created (by)

RS

Plotted and checked by

FT

Verified

MP

Approved

MB

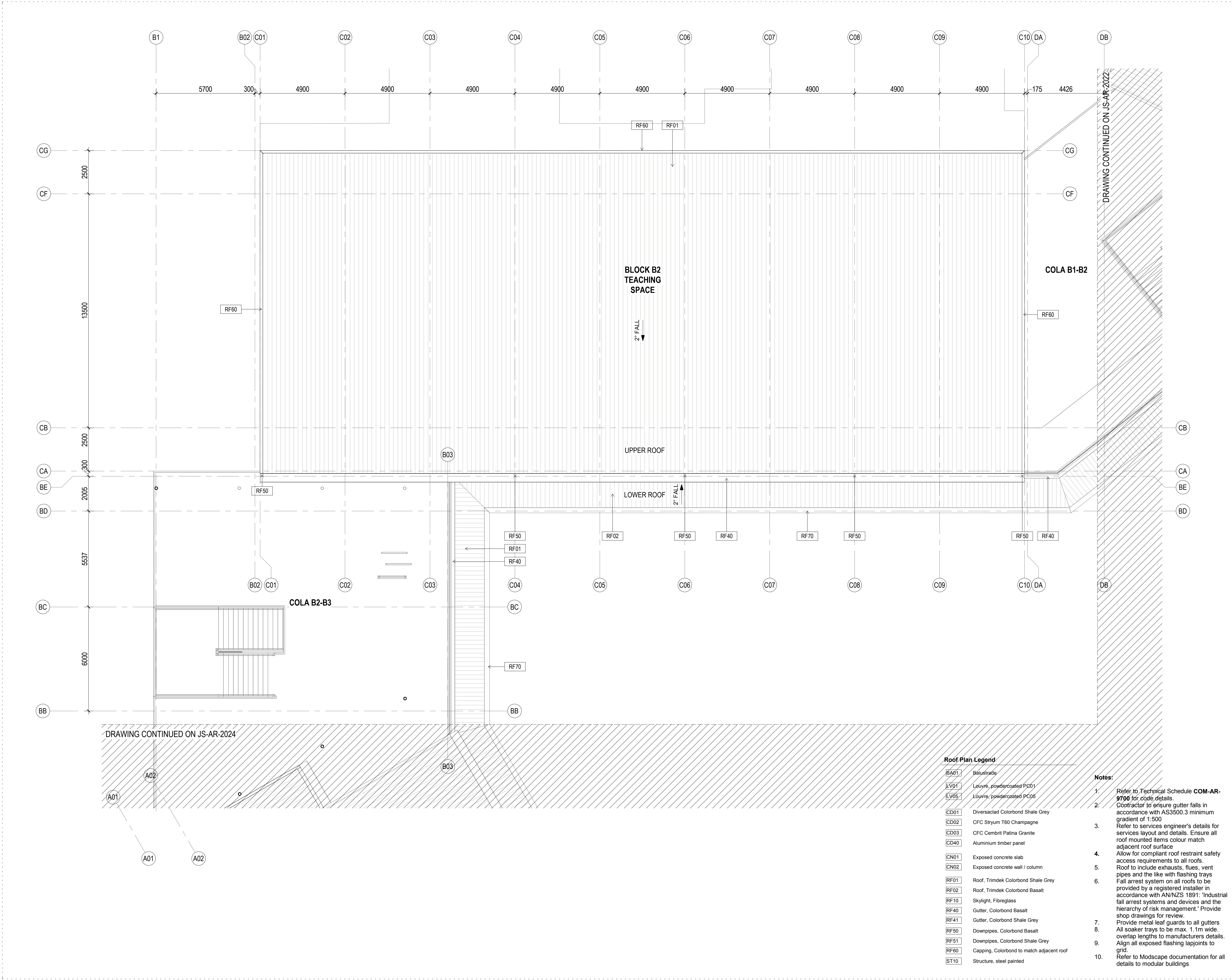
Project No

Drawing No

Issue

180646 JS-AR-2022 C

5/3/2019 3:36:12 PM



General Notes:

1. This drawing is the copyright of Group GSA Pty Ltd and may not be altered, reproduced or transmitted in any form or by any means in part or in whole without the written permission of Group GSA
2. Drawings to be printed in colour.
3. Do not scale drawings. Dimensions govern.
4. All dimensions are in millimetres unless noted otherwise.
5. All dimensions shall be verified on site before proceeding
6. Any areas indicated on this sheet are approximate and indicative only.

Amendments		
Issue	Description	Date
A	FOR COORDINATION	27.03.2019
B	PROGRESS ISSUE	10.05.2019
C	SSD SUBMISSION	31.05.2019

Contractor

RICHARD CROOKES
CONSTRUCTIONS

Client

Education

GROUP GSA

Group GSA Pty Ltd ABN 76 002 113 779
Level 7, 80 William St East Sydney NSW
Australia 2011
www.groupgsa.com

T +612 9361 4144 F +612 9332 3458

architecture interior design urban design landscape
nom architect M. Sheldon 3990

Project Title

**JORDAN SPRINGS
PUBLIC SCHOOL**

Drawing Title

**ROOF PLAN - BLOCK
B2 - PART 4**

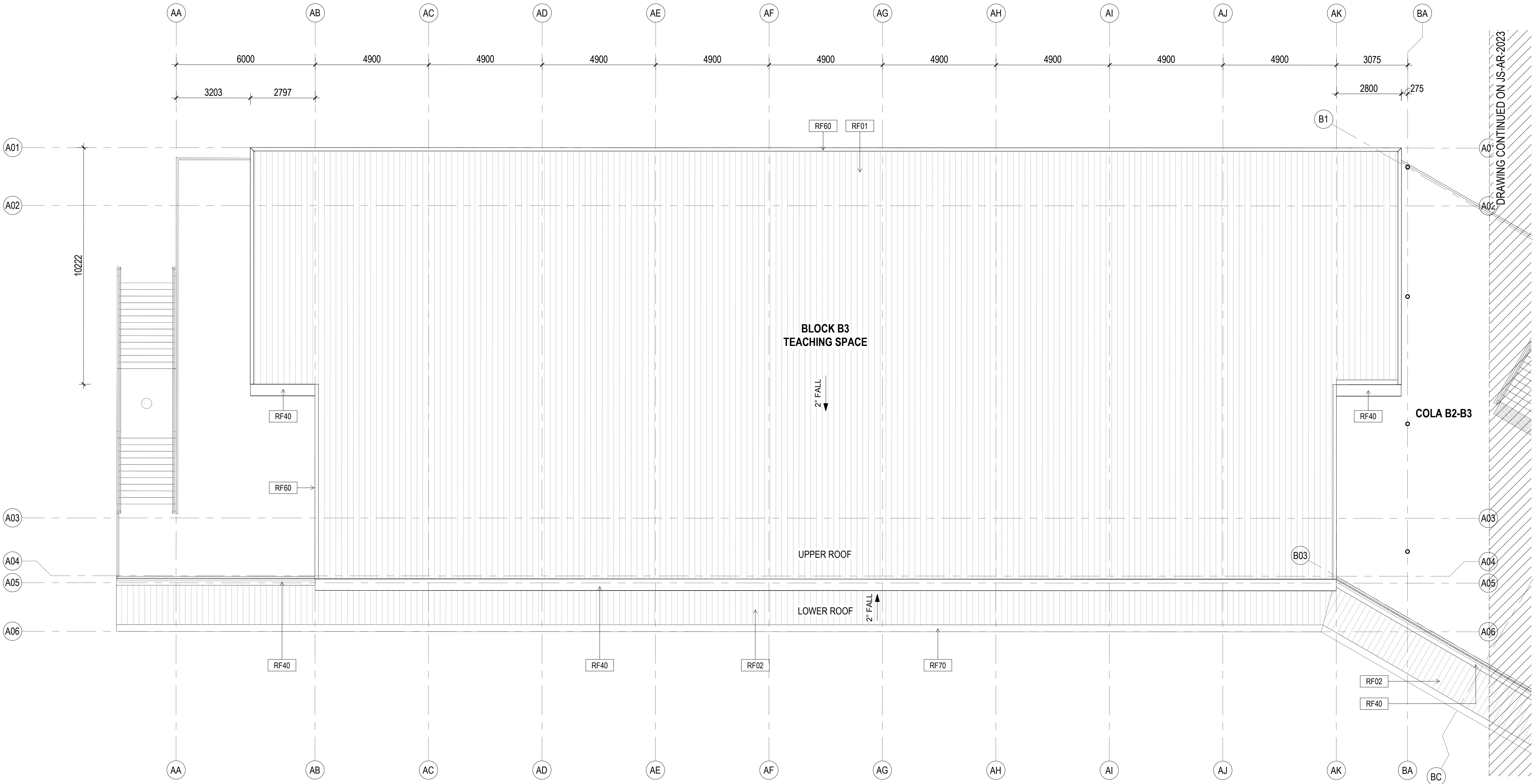
Scale @ A1	1 : 100	
Drawing Created (date)	10/05/19	
Drawing Created (by)	RS	
Plotted and checked by	FT	
Verified	MP	
Approved	MB	
Project No	Drawing No	Issue
180646	JS-AR-2023	C

Notes:

1. Refer to Technical Schedule **COM-AR-9700** for code details.
2. Contractor to ensure gutter falls in accordance with AS3500.3 minimum gradient of 1:500
3. Refer to services engineer's details for services layout and details. Ensure all roof mounted items colour match adjacent roof surface
4. Allow for compliant roof restraint safety access requirements to all roofs.
5. Roof to include exhausts, flues, vent pipes and the like with flashing trays
6. Fall arrest system on all roofs to be provided by a registered installer in accordance with AN/NZS 1891: 'Industrial fall arrest systems and devices and the hierarchy of risk management.' Provide shop drawings for review.
7. Provide metal leaf guards to all gutters
8. All soaker trays to be max. 1.1m wide, overlap lengths to manufacturers details.
9. Align all exposed flashing lapjoints to grid.
10. Refer to Moodscape documentation for all details to modular buildings

General Notes:
1. This drawing is the copyright of Group GSA Pty Ltd and may not be altered, reproduced or transmitted in any form or by any means in part or in whole without the written permission of Group GSA
2. Drawings to be printed in colour.
3. Do not scale drawings. Dimensions govern.
4. All dimensions are in millimetres unless noted otherwise.
5. All dimensions shall be verified on site before proceeding.
6. Any areas indicated on this sheet are approximate and indicative only.

Amendments		
Issue	Description	Date
A	FOR COORDINATION	27.03.2019
B	PROGRESS ISSUE	10.05.2019
C	SSD SUBMISSION	31.05.2019

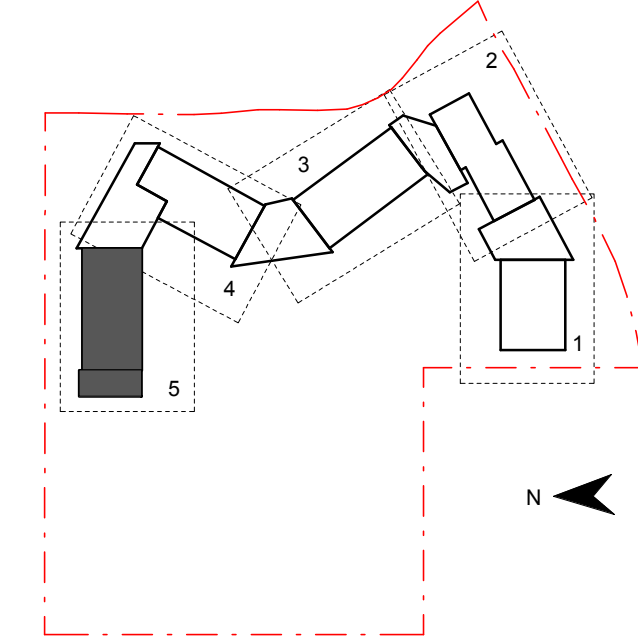


Roof Plan Legend

BA01	Balustrade
LV01	Louvre, powdercoated PC01
LV05	Louvre, powdercoated PC05
CD01	Diversaclad Colorbond Shale Grey
CD02	CFC Styrum T60 Champagne
CD03	CFC Cembrit Patina Granite
CD40	Aluminium timber panel
CN01	Exposed concrete slab
CN02	Exposed concrete wall / column
RF01	Roof, Trimdek Colorbond Shale Grey
RF02	Roof, Trimdek Colorbond Basalt
RF10	Skylight, Fibreglass
RF40	Gutter, Colorbond Basalt
RF41	Gutter, Colorbond Shale Grey
RF50	Downpipes, Colorbond Basalt
RF51	Downpipes, Colorbond Shale Grey
RF60	Capping, Colorbond to match adjacent roof
ST10	Structure, steel painted

Notes:

- Refer to Technical Schedule **COM-AR-9700** for code details.
- Contractor to ensure gutter falls in accordance with AS3500.3 minimum gradient of 1:500
- Refer to services engineer's details for services layout and details. Ensure all roof mounted items colour match adjacent roof surface
- Allow for compliant roof restraint safety access requirements to all roofs.
- Roof to include exhausts, flues, vent pipes and the like with flashing trays
- Fall arrest system on all roofs to be provided by a registered installer in accordance with AN/NZS 1891: 'Industrial fall arrest systems and devices and the hierarchy of risk management.' Provide shop drawings for review.
- Provide metal leaf guards to all gutters
- All soaker trays to be max. 1.1m wide, overlap lengths to manufacturers details.
- Align all exposed flashing lapjoints to grid.
- Refer to Modscape documentation for all details to modular buildings



Contractor

RICHARD CROOKES
CONSTRUCTIONS

Client



GROUP GSA

Group GSA Pty Ltd ABN 76 002 113 779
Level 7, 80 William St East Sydney NSW
Australia 2011
www.groupgsa.com

T +612 9361 4144 F +612 9332 3458

architecture interior design urban design landscape
nom architect M. Sheldon 3990

Project Title

JORDAN SPRINGS
PUBLIC SCHOOL

Drawing Title

ROOF PLAN - BLOCK
B3 - PART 5

Scale @ A1 1 : 100

Drawing Created (date) 10/05/19

Drawing Created (by) RS

Plotted and checked by FT

Verified MP

Approved MB

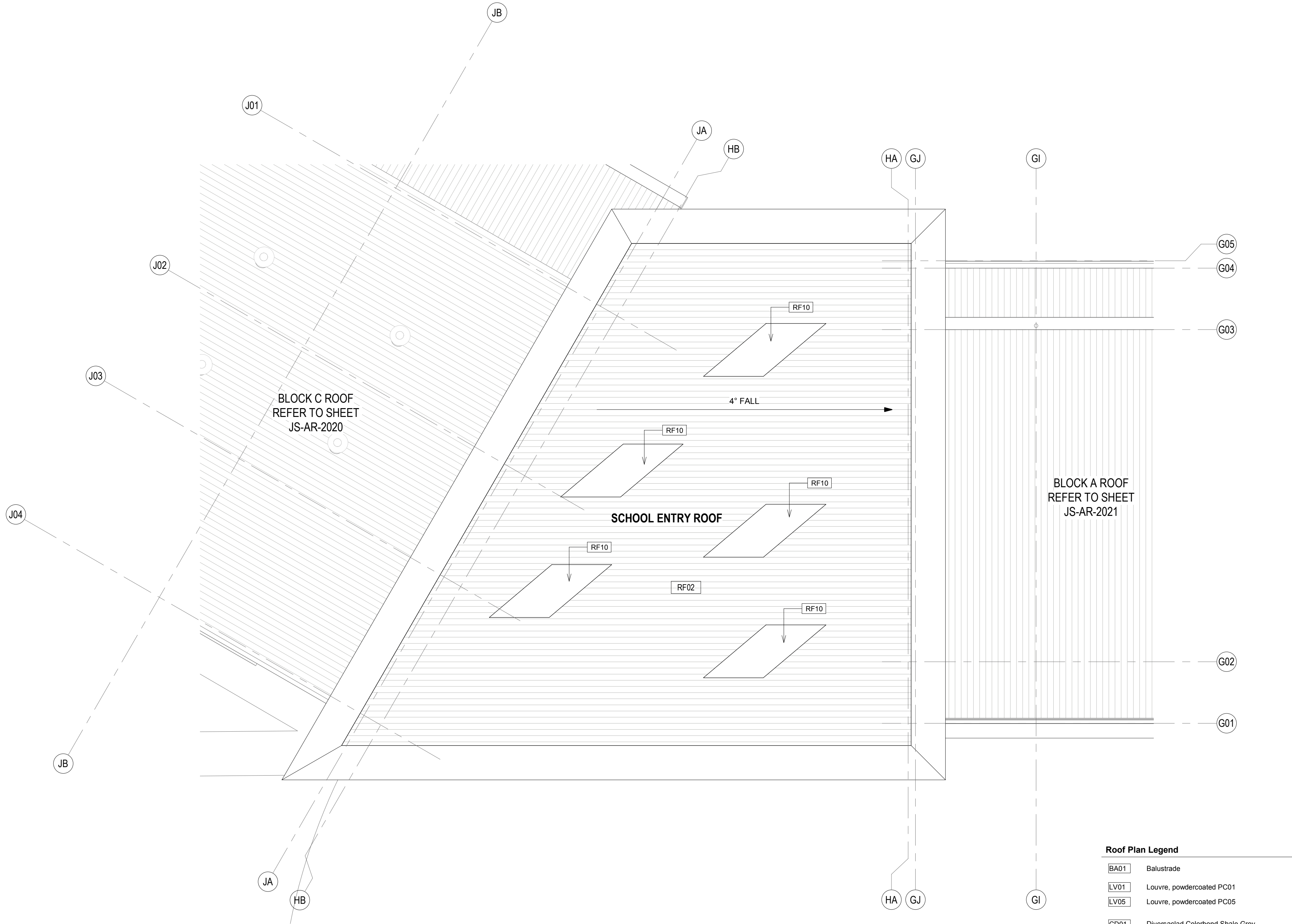
Project No Drawing No Issue

180646 JS-AR-2024 C

5/3/2019 3:30:23 PM

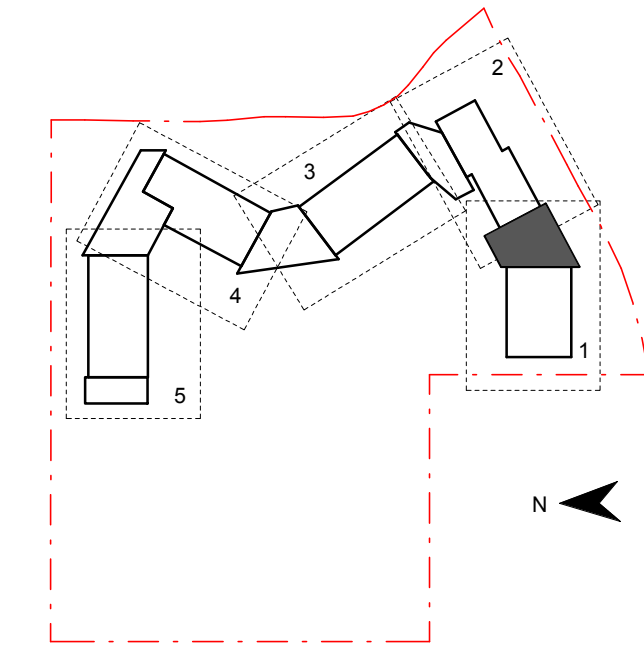
General Notes:
1. This drawing is the copyright of Group GSA Pty Ltd and may not be altered, reproduced or transmitted in any form or by any means in part or in whole without the written permission of Group GSA
2. Drawings to be printed in colour.
3. Do not scale drawings. Dimensions govern.
4. All dimensions are in millimetres unless noted otherwise.
5. All dimensions shall be verified on site before proceeding.
6. Any areas indicated on this sheet are approximate and indicative only.

Amendments		
Issue	Description	Date
A	PROGRESS ISSUE	10.05.2019
B	COLA Roof Progress Issue	24.05.2019
C	SSD SUBMISSION	31.05.2019



Roof Plan Legend	
BA01	Balustrade
LV01	Louvre, powdercoated PC01
LV05	Louvre, powdercoated PC05
CD01	Diversaclad Colorbond Shale Grey
CD02	CFC Stryum T60 Champagne
CD03	CFC Cembrit Patina Granite
CD40	Aluminium timber panel
CN01	Exposed concrete slab
CN02	Exposed concrete wall / column
RF01	Roof, Trimdek Colorbond Shale Grey
RF02	Roof, Trimdek Colorbond Basalt
RF10	Skylight, Fibreglass
RF40	Gutter, Colorbond Basalt
RF41	Gutter, Colorbond Shale Grey
RF50	Downpipes, Colorbond Basalt
RF51	Downpipes, Colorbond Shale Grey
RF60	Capping, Colorbond to match adjacent roof
ST10	Structure, steel painted

- Notes:
- Refer to Technical Schedule **COM-AR-9700** for code details.
 - Contractor to ensure gutter falls in accordance with AS3500.3 minimum gradient of 1:500
 - Refer to services engineer's details for services layout and details. Ensure all roof mounted items colour match adjacent roof surface
 - Allow for compliant roof restraint safety access requirements to all roofs.
 - Roof to include exhausts, flues, vent pipes and the like with flashing trays
 - Fall arrest system on all roofs to be provided by a registered installer in accordance with AN/NZS 1891: 'Industrial fall arrest systems and devices and the hierarchy of risk management.' Provide shop drawings for review.
 - Provide metal leaf guards to all gutters
 - All soaker trays to be max. 1.1m wide, overlap lengths to manufacturers details.
 - Align all exposed flashing lapjoints to grid.
 - Refer to Modscape documentation for all details to modular buildings



Contractor
RICHARD CROOKES CONSTRUCTIONS

Client
NSW GOVERNMENT Education

GROUP GSA

Group GSA Pty Ltd ABN 76 002 113 779
Level 7, 80 William St East Sydney NSW
Australia 2011
www.groupgsa.com

T +612 9361 4144 F +612 9332 3458

architecture interior design urban design landscape
nom architect M. Sheldon 3990

Project Title
JORDAN SPRINGS PUBLIC SCHOOL

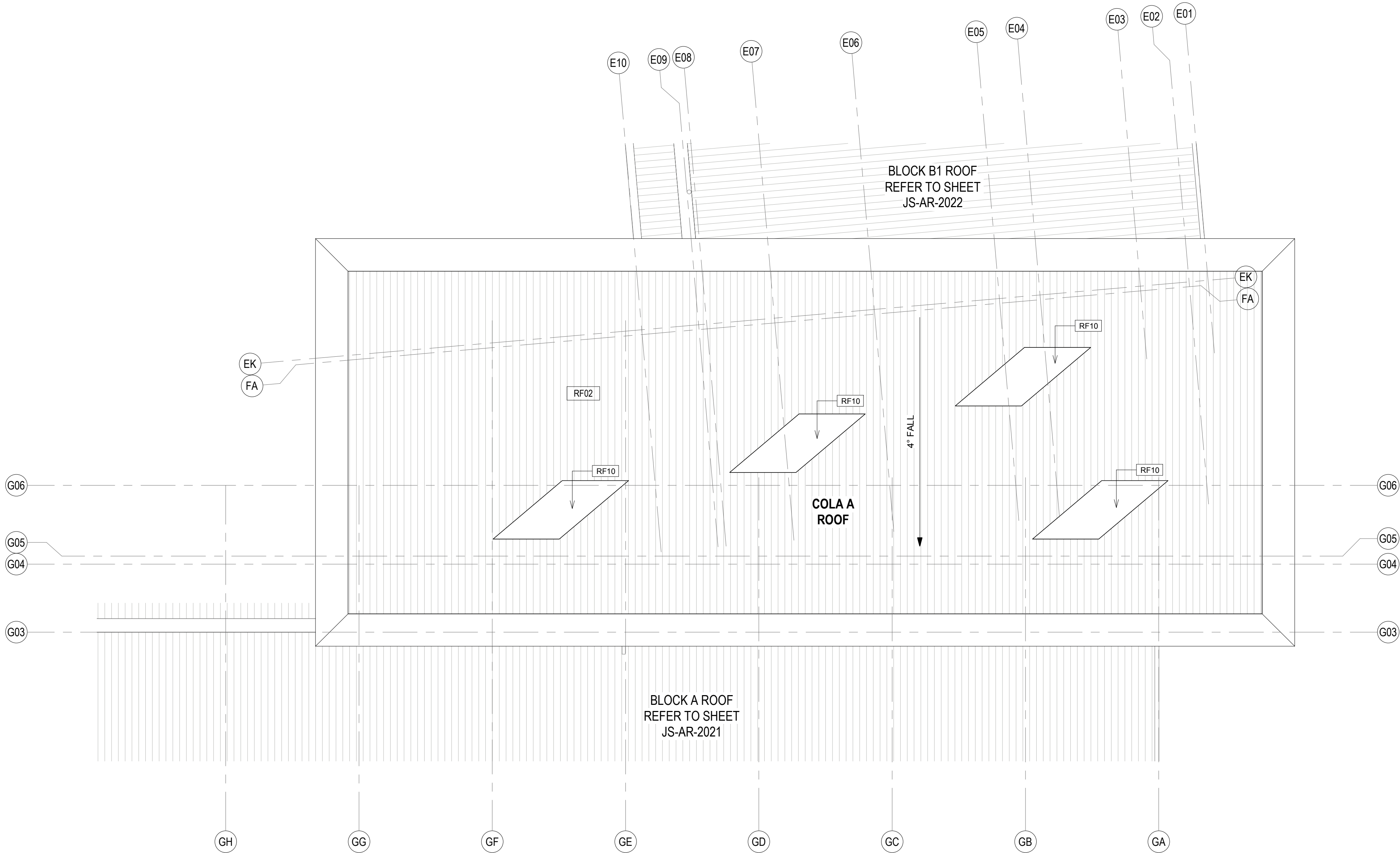
Drawing Title

ROOF PLAN - SCHOOL ENTRY

Scale @ A1		1 : 100
Drawing Created (date)		10/05/19
Drawing Created (by)		RS
Plotted and checked by		MB
Verified		RF
Approved		MB
Project No	Drawing No	Issue

180646 JS-AR-2030 C

5/3/2019 3:36 PM



Roof Plan Legend

BA01	Balustrade
LV01	Louvre, powdercoated PC01
LV05	Louvre, powdercoated PC05
CD01	Diversaciad Colorbond Shale Grey
CD02	CFC Stryum T60 Champagne
CD03	CFC Cembrit Patina Granite
CD40	Aluminium timber panel
CN01	Exposed concrete slab
CN02	Exposed concrete wall / column
RF01	Roof, Trimdek Colorbond Shale Grey
RF02	Roof, Trimdek Colorbond Basalt
RF10	Skylight, Fibreglass
RF40	Gutter, Colorbond Basalt
RF41	Gutter, Colorbond Shale Grey
RF50	Downpipes, Colorbond Basalt
RF51	Downpipes, Colorbond Shale Grey
RF60	Capping, Colorbond to match adjacent roof
ST10	Structure, steel painted

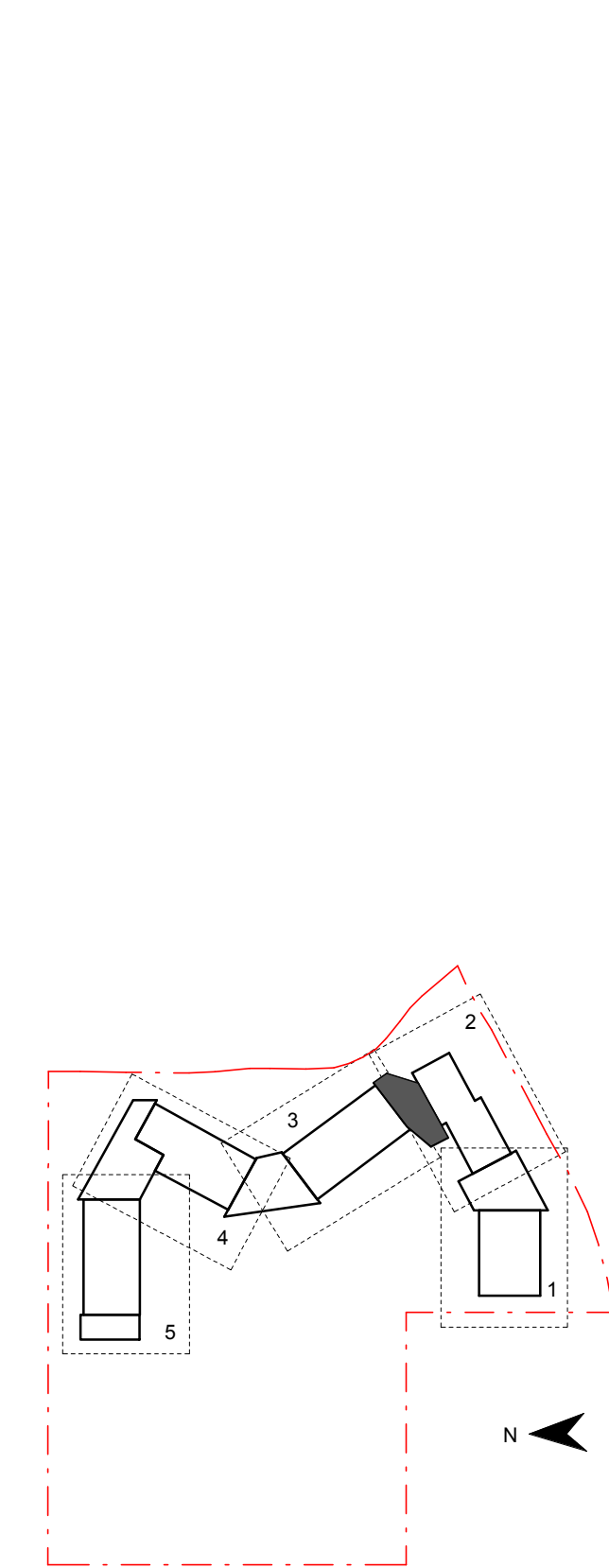
Notes:

- Refer to Technical Schedule **COM-AR-9700** for code details.
- Contractor to ensure gutter falls in accordance with AS3500.3 minimum gradient of 1:500
- Refer to services engineer's details for services layout and details. Ensure all roof mounted items colour match adjacent roof surface
- Allow for compliant roof restraint safety access requirements to all roofs.
- Roof to include exhausts, flues, vent pipes and the like with flashing trays
- Fall arrest system on all roofs to be provided by a registered installer in accordance with AN/NZS 1891: 'Industrial fall arrest systems and devices and the hierarchy of risk management.' Provide shop drawings for review.
- Provide metal leaf guards to all gutters
- All soaker trays to be max. 1.1m wide, overlap lengths to manufacturers details.
- Align all exposed flashing lapjoints to grid.
- Refer to Modscape documentation for all details to modular buildings

General Notes:
1. This drawing is the copyright of Group GSA Pty Ltd and may not be altered, reproduced or transmitted in any form or by any means in part or in whole without the written permission of Group GSA
2. Drawings to be printed in colour.
3. Do not scale drawings. Dimensions govern.
4. All dimensions are in millimetres unless noted otherwise.
5. All dimensions shall be verified on site before proceeding
6. Any areas indicated on this sheet are approximate and indicative only.

Amendments

Issue	Description	Date
A	PROGRESS ISSUE	10.05.2019
B	COLA Roof Progress Issue	24.05.2019
C	SSD SUBMISSION	31.05.2019



Contractor

RICHARD CROOKES
CONSTRUCTIONS

Client



GROUP GSA

Group GSA Pty Ltd ABN 76 002 113 779
Level 7, 80 William St East Sydney NSW
Australia 2011
www.groupgsa.com

T +612 9361 4144 F +612 9332 3458

architecture interior design urban design landscape
nom architect M. Sheldon 3990

Project Title

JORDAN SPRINGS
PUBLIC SCHOOL

Drawing Title

ROOF PLAN - COLA A

Scale @ A1 1 : 100

Drawing Created (date) 10/05/19

Drawing Created (by) RS

Plotted and checked by MB

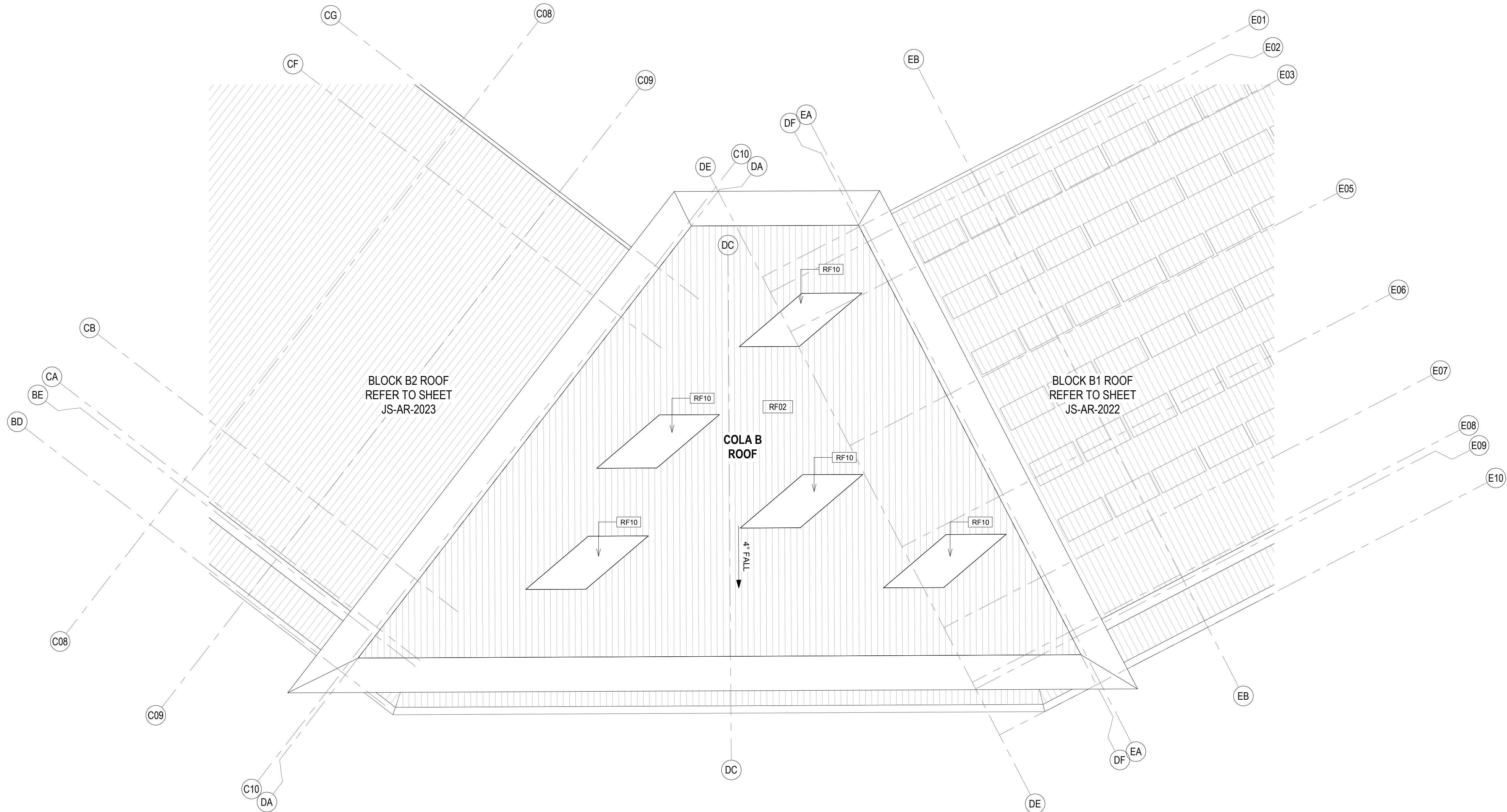
Verified RF

Approved MB

Project No Drawing No Issue

180646 JS-AR-2031 C

5/3/2019 3:30:41 PM



- Notes:**
- Refer to Technical Schedule **COM-AR-9700** for code details.
 - Contractor to ensure gutter falls in accordance with AS3500.3 minimum gradient of 1:500
 - Refer to services engineer's details for services layout and details. Ensure all roof mounted items colour match adjacent roof surface
 - Allow for compliant roof restraint safety access requirements to all roofs.
 - Roof to include exhausts, flues, vent pipes and the like with flashing trays
 - Fall arrest system on all roofs to be provided by a registered installer in accordance with AN/NZS 1891: 'Industrial fall arrest systems and devices and the hierarchy of risk management.' Provide shop drawings for review.
 - Provide metal leaf guards to all gutters
 - All soaker trays to be max. 1.1m wide, overlap lengths to manufacturers details.
 - Align all exposed flashing lapjoints to grid.
 - Refer to Modscape documentation for all details to modular buildings

General Notes:

- This drawing is the copyright of Group GSA Pty Ltd and may not be altered, reproduced or transmitted in any form or by any means in part or in whole without the written permission of Group GSA
- Drawings to be printed in colour.
- Do not scale drawings. Dimensions govern.
- All dimensions are in millimetres unless noted otherwise.
- All dimensions shall be verified on site before proceeding
- Any areas indicated on this sheet are approximate and indicative only.

Issue	Description	Date
A	PROGRESS ISSUE	10.05.2019
B	COLA Roof Progress Issue	24.05.2019
C	SSD SUBMISSION	31.05.2019

Roof Plan Legend

BA01	Balustrade
LV01	Louvre, powdercoated PC01
LV05	Louvre, powdercoated PC05
CD01	Diversaclad Colorbond Shale Grey
CD02	CFC Stryum T60 Champagne
CD03	CFC Cembrit Patina Granite
CD40	Aluminium timber panel
CN01	Exposed concrete slab
CN02	Exposed concrete wall / column
RF01	Roof, Trimdek Colorbond Shale Grey
RF02	Roof, Trimdek Colorbond Basalt
RF10	Skylight, Fibreglass
RF40	Gutter, Colorbond Basalt
RF41	Gutter, Colorbond Shale Grey
RF50	Downpipes, Colorbond Basalt
RF51	Downpipes, Colorbond Shale Grey
RF60	Capping, Colorbond to match adjacent roof
ST10	Structure, steel painted

Contractor

RICHARD CROOKES
CONSTRUCTIONS

Client

NSW GOVERNMENT Education

GROUP GSA

Group GSA Pty Ltd ABN 76 002 113 779
Level 7, 80 William St East Sydney NSW
Australia 2011
www.groupgsa.com

T +612 9361 4144 F +612 9332 3458

architecture interior design urban design landscape
nom architect M. Sheldon 3990

Project Title

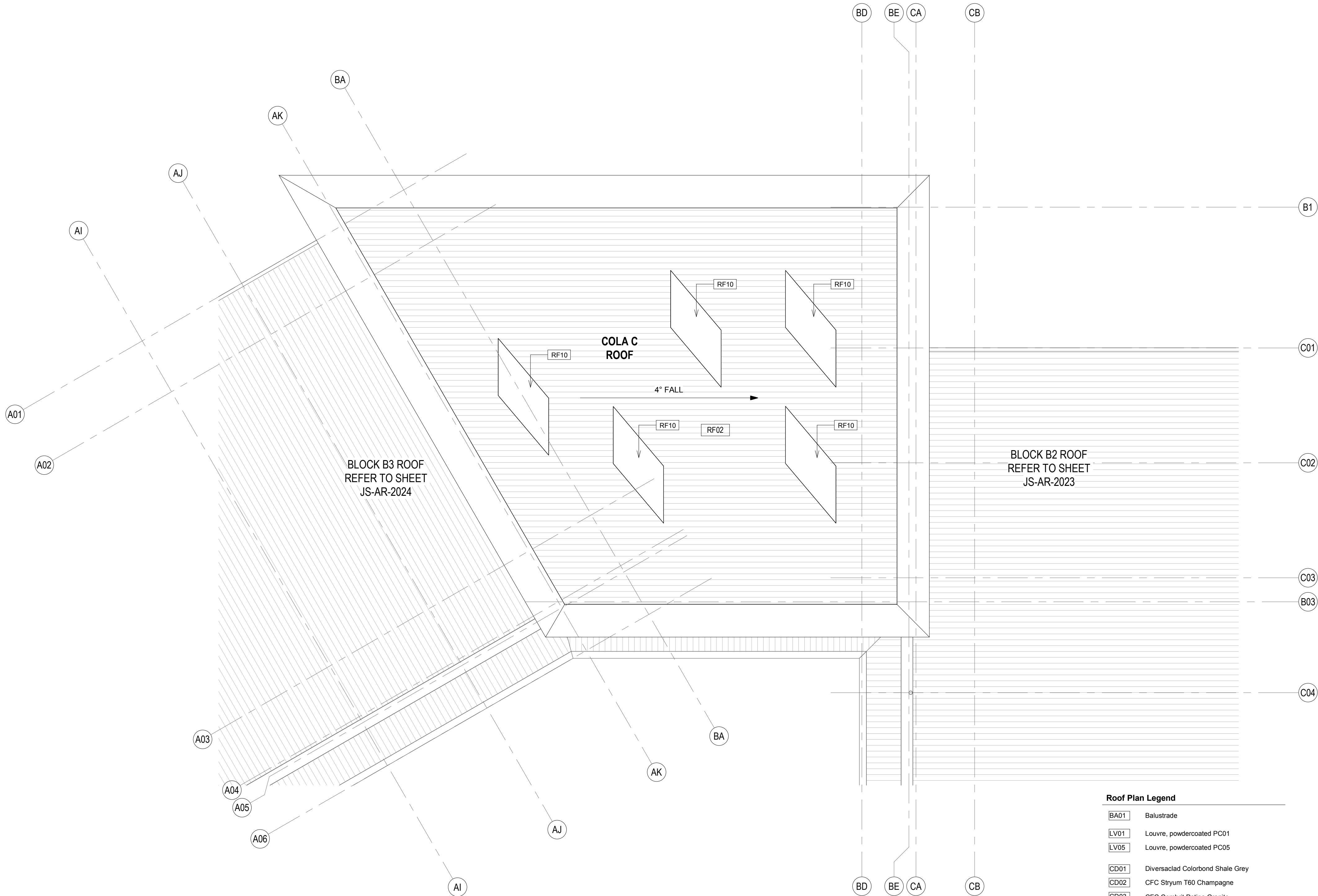
**JORDAN SPRINGS
PUBLIC SCHOOL**

Drawing Title

ROOF PLAN - COLA B

Scale @ A1	1 : 100	
Drawing Created (date)	10/05/19	
Drawing Created (by)	RS	
Plotted and checked by	MB	
Verified	RF	
Approved	MB	
Project No	Drawing No	Issue
180646	JS-AR-2032	C

5/3/2019 3:30:47 PM



Roof Plan Legend

BA01	Balustrade
LV01	Louvre, powdercoated PC01
LV05	Louvre, powdercoated PC05
CD01	Diversadad Colorbond Shale Grey
CD02	CFC Stryum T60 Champagne
CD03	CFC Cembrit Patina Granite
CD40	Aluminium timber panel
CN01	Exposed concrete slab
CN02	Exposed concrete wall / column
RF01	Roof, Trimdek Colorbond Shale Grey
RF02	Roof, Trimdek Colorbond Basalt
RF10	Skylight, Fibreglass
RF40	Gutter, Colorbond Basalt
RF41	Gutter, Colorbond Shale Grey
RF50	Downpipes, Colorbond Basalt
RF51	Downpipes, Colorbond Shale Grey
RF60	Capping, Colorbond to match adjacent roof
ST10	Structure, steel painted

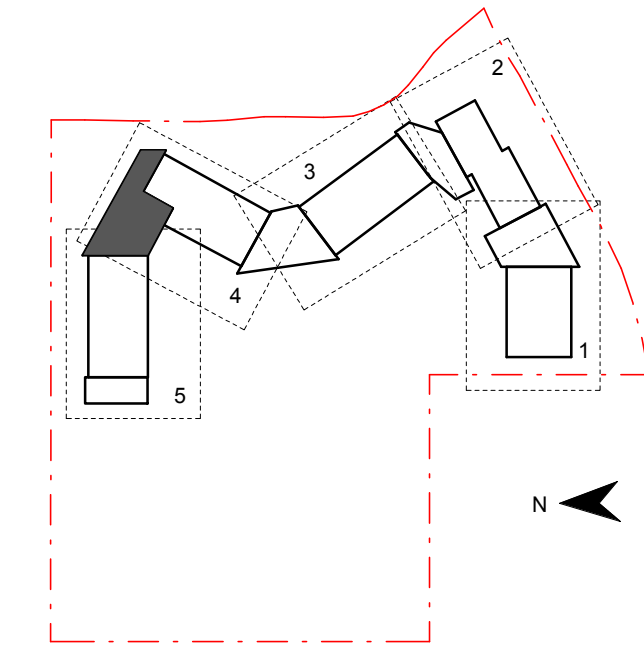
Notes:

- Refer to Technical Schedule **COM-AR-9700** for code details.
- Contractor to ensure gutter falls in accordance with AS3500.3 minimum gradient of 1:500
- Refer to services engineer's details for services layout and details. Ensure all roof mounted items colour match adjacent roof surface
- Allow for compliant roof restraint safety access requirements to all roofs.
- Roof to include exhausts, flues, vent pipes and the like with flashing trays
- Fall arrest system on all roofs to be provided by a registered installer in accordance with AN/NZS 1891: 'Industrial fall arrest systems and devices and the hierarchy of risk management.' Provide shop drawings for review.
- Provide metal leaf guards to all gutters
- All soaker trays to be max. 1.1m wide, overlap lengths to manufacturers details.
- Align all exposed flashing lapjoints to grid.
- Refer to Modscape documentation for all details to modular buildings

General Notes:
1. This drawing is the copyright of Group GSA Pty Ltd and may not be altered, reproduced or transmitted in any form or by any means in part or in whole without the written permission of Group GSA
2. Drawings to be printed in colour.
3. Do not scale drawings. Dimensions govern.
4. All dimensions are in millimetres unless noted otherwise.
5. All dimensions shall be verified on site before proceeding
6. Any areas indicated on this sheet are approximate and indicative only.

Amendments

Issue	Description	Date
A	PROGRESS ISSUE	10.05.2019
B	COLA Roof Progress Issue	24.05.2019
C	SSD SUBMISSION	31.05.2019



Contractor

RICHARD CROOKES
CONSTRUCTIONS

Client



GROUP GSA

Group GSA Pty Ltd ABN 76 002 113 779
Level 7, 80 William St East Sydney NSW
Australia 2011
www.groupgsa.com

T +612 9361 4144 F +612 9332 3458

architecture interior design urban design landscape
nom architect M. Sheldon 3990

Project Title

JORDAN SPRINGS
PUBLIC SCHOOL

Drawing Title

ROOF PLAN - COLA C

Scale @ A1 1 : 100

Drawing Created (date) 10/05/19

Drawing Created (by) RS

Plotted and checked by MB

Verified RF

Approved MB

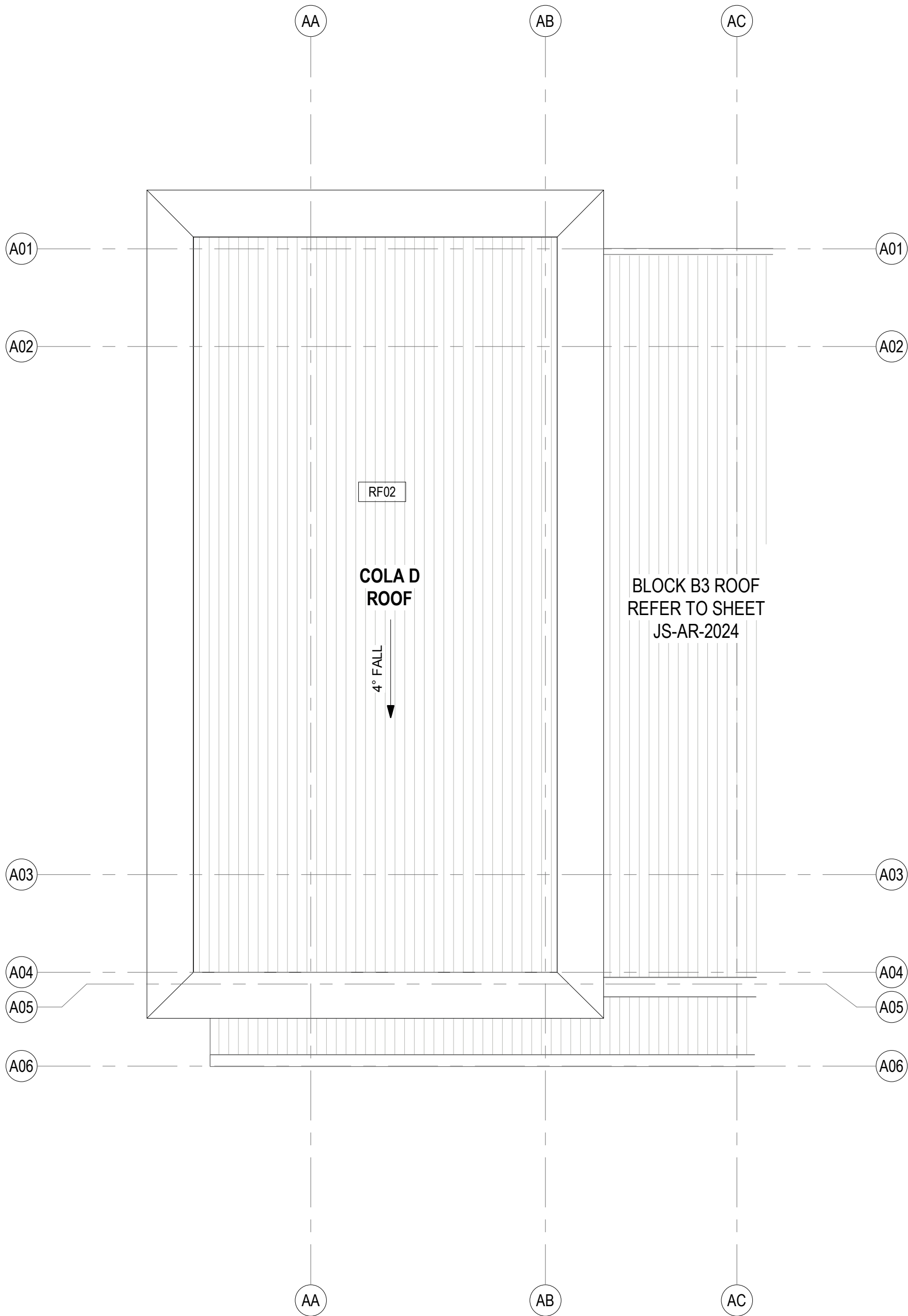
Project No Drawing No Issue

180646 JS-AR-2033 C

5/3/2019 3:35:53 PM

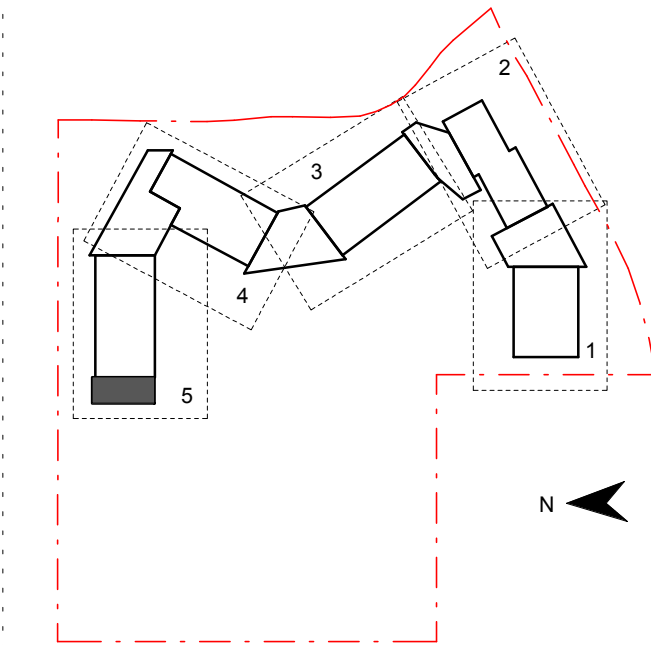
General Notes:
1. This drawing is the copyright of Group GSA Pty Ltd and may not be altered, reproduced or transmitted in any form or by any means in part or in whole without the written permission of Group GSA
2. Drawings to be printed in colour.
3. Do not scale drawings. Dimensions govern.
4. All dimensions are in millimetres unless noted otherwise.
5. All dimensions shall be verified on site before proceeding.
6. Any areas indicated on this sheet are approximate and indicative only.

Amendments		
Issue	Description	Date
A	PROGRESS ISSUE	10.05.2019
B	COLA Roof Progress Issue	24.05.2019
C	SSD SUBMISSION	31.05.2019



Roof Plan Legend	
BA01	Balustrade
LV01	Louvre, powdercoated PC01
LV05	Louvre, powdercoated PC05
CD01	Diversaclad Colorbond Shale Grey
CD02	CFC Stryum T60 Champagne
CD03	CFC Cembrit Patina Granite
CD40	Aluminium timber panel
CN01	Exposed concrete slab
CN02	Exposed concrete wall / column
RF01	Roof, Trimdek Colorbond Shale Grey
RF02	Roof, Trimdek Colorbond Basalt
RF10	Skylight, Fibreglass
RF40	Gutter, Colorbond Basalt
RF41	Gutter, Colorbond Shale Grey
RF50	Downpipes, Colorbond Basalt
RF51	Downpipes, Colorbond Shale Grey
RF60	Capping, Colorbond to match adjacent roof
ST10	Structure, steel painted

- Notes:
- Refer to Technical Schedule **COM-AR-9700** for code details.
 - Contractor to ensure gutter falls in accordance with AS3500.3 minimum gradient of 1:500
 - Refer to services engineer's details for services layout and details. Ensure all roof mounted items colour match adjacent roof surface
 - Allow for compliant roof restraint safety access requirements to all roofs.
 - Roof to include exhausts, flues, vent pipes and the like with flashing trays
 - Fall arrest system on all roofs to be provided by a registered installer in accordance with AN/NZS 1891: 'Industrial fall arrest systems and devices and the hierarchy of risk management.' Provide shop drawings for review.
 - Provide metal leaf guards to all gutters
 - All soaker trays to be max. 1.1m wide, overlap lengths to manufacturers details.
 - Align all exposed flashing lapjoints to grid.
 - Refer to Modscape documentation for all details to modular buildings



Contractor

RICHARD CROOKES
CONSTRUCTIONS

Client

NSW GOVERNMENT Education

GROUP GSA

Group GSA Pty Ltd ABN 76 002 113 779
Level 7, 80 William St East Sydney NSW
Australia 2011
www.groupgsa.com

T +612 9361 4144 F +612 9332 3458

architecture interior design urban design landscape
nom architect M. Sheldon 3990

Project Title

**JORDAN SPRINGS
PUBLIC SCHOOL**

Drawing Title

ROOF PLAN - COLA D

Scale @ A1		1 : 100
Drawing Created (date)		10/05/19
Drawing Created (by)		RS
Plotted and checked by		MB
Verified		RF
Approved		MB
Project No	Drawing No	Issue
180646	JS-AR-2034	C

5/3/2019 3:30:57 PM