

# John Palmer Public School

## Information pack – State Significant Development application update

October 2021



Internal wide view of proposed new buildings

The NSW Government is investing \$7.9 billion over the next four years, continuing its program to deliver 215 new and upgraded schools to support communities across NSW. This is the largest investment in public education infrastructure in the history of NSW.

The NSW Department of Education is committed to delivering new and upgraded schools for communities across NSW. The delivery of these important projects is essential to the future learning needs of our students and supports growth in the local economy.

### About this information pack

This document provides an overview of the State Significant Development (SSD) application for the John Palmer Public School upgrade, which was recently lodged with the Department on Planning, Industry and Environment (DPIE).

### What is a State Significant Development application?

State Significant Development (SSD) applications are used for projects that have special significance to the people and State of NSW. The Department of Planning, Industry and Environment (DPIE) is responsible for the planning approval process for an SSD application, rather than a local council.

DPIE placed the John Palmer Public School upgrade SSD application on public exhibition on Tuesday 19 October 2021. You can get more information and make a submission on the SSD application until Monday 15 November 2021 by going to: [mpweb.planningportal.nsw.gov.au/major-projects/project/42251](https://mpweb.planningportal.nsw.gov.au/major-projects/project/42251)

## Project overview

The upgrade to John Palmer Public School will bring students improved facilities and support the growing local community. Under the SSD application we are proposing to increase the permanent teaching spaces at the school which would allow for the removal of temporary classrooms.



Three-storey building with 29 permanent learning spaces



New library



Expanded school hall including new Outside School Hours Care (OSHC) facilities



Additional staff facilities and amenities

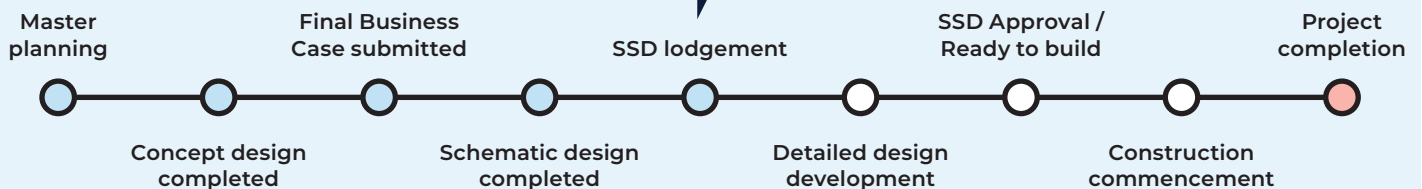


Improved outdoor play and learning spaces



Additional support learning space

## Project timeline



Artist impression of new three-storey learning building adjacent to The Ponds Boulevard

## Statutory planning pathway

Due to the level of investment involved, the John Palmer Public School upgrade is considered a State Significant Development (SSD). Therefore, the NSW Department of Planning, Industry and Environment (DPIE) will assess the project's development application.

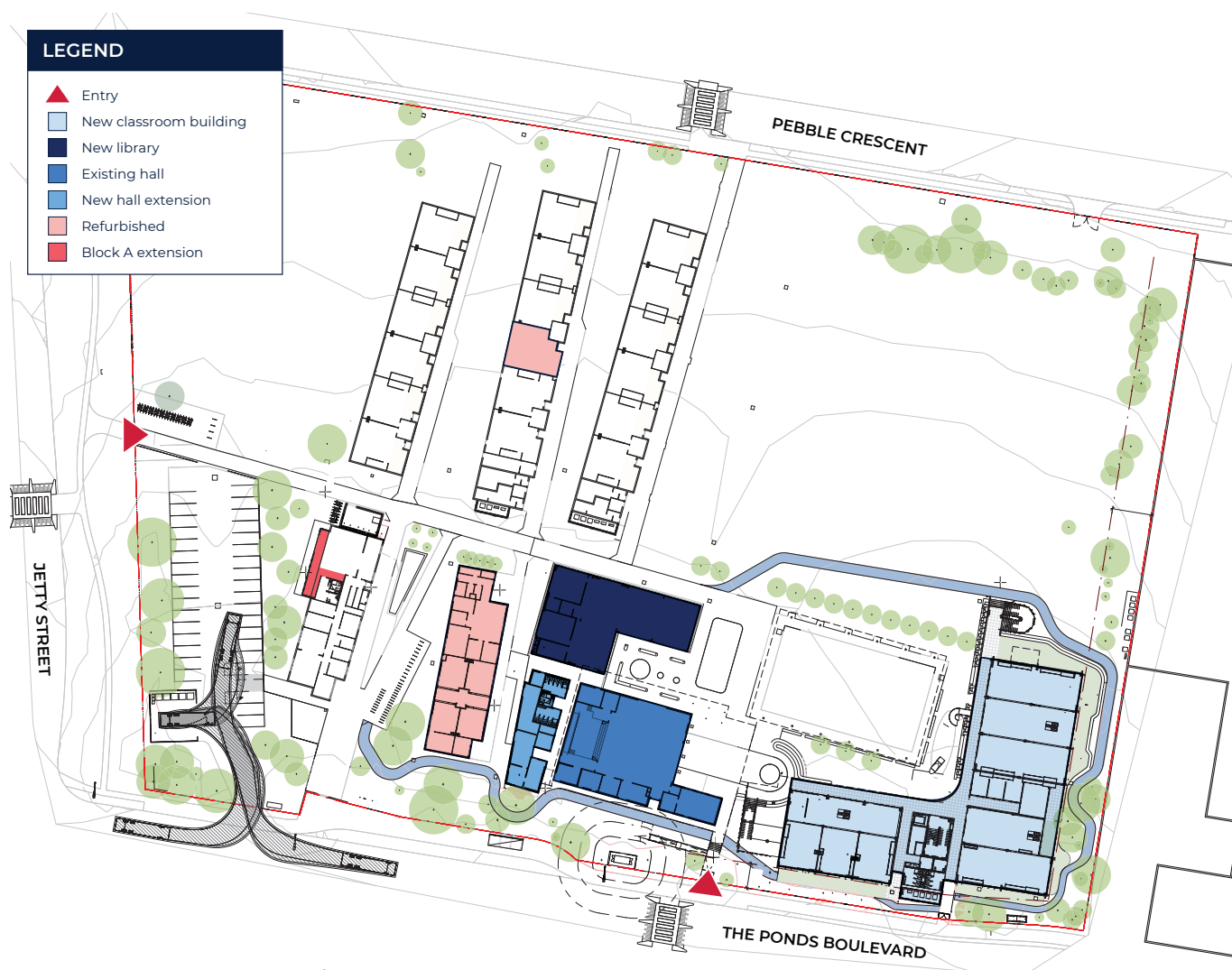
The SSD application has been lodged with DPIE and placed on public exhibition on the DPIE major projects website. DPIE will notify neighbouring residents and place a notice in the local newspaper advising of the public exhibition timing and process. Submissions can be made directly to DPIE by post or online during the 28 day exhibition period.

The SSD application for this project seeks approval for the design along with the location, scale and envelope of each building. The application is accompanied by an Environmental Impact Statement (EIS), as set out in the Secretary's Environmental Assessment Requirements (SEARs).

The design has been developed in consultation with experts from the education sector. The Department of Education will continue to work with stakeholders throughout the detailed design phase to ensure the requirements of government and community stakeholders are achieved. The design incorporates state of the art technology, which will assist in transforming the bright young minds of today into leaders of tomorrow.

## Site map of the proposed school upgrade

The below plan will be submitted with the SSD application for the project, confirming the internal layout of spaces and how they will function.



Map of proposed John Palmer Public School upgrade

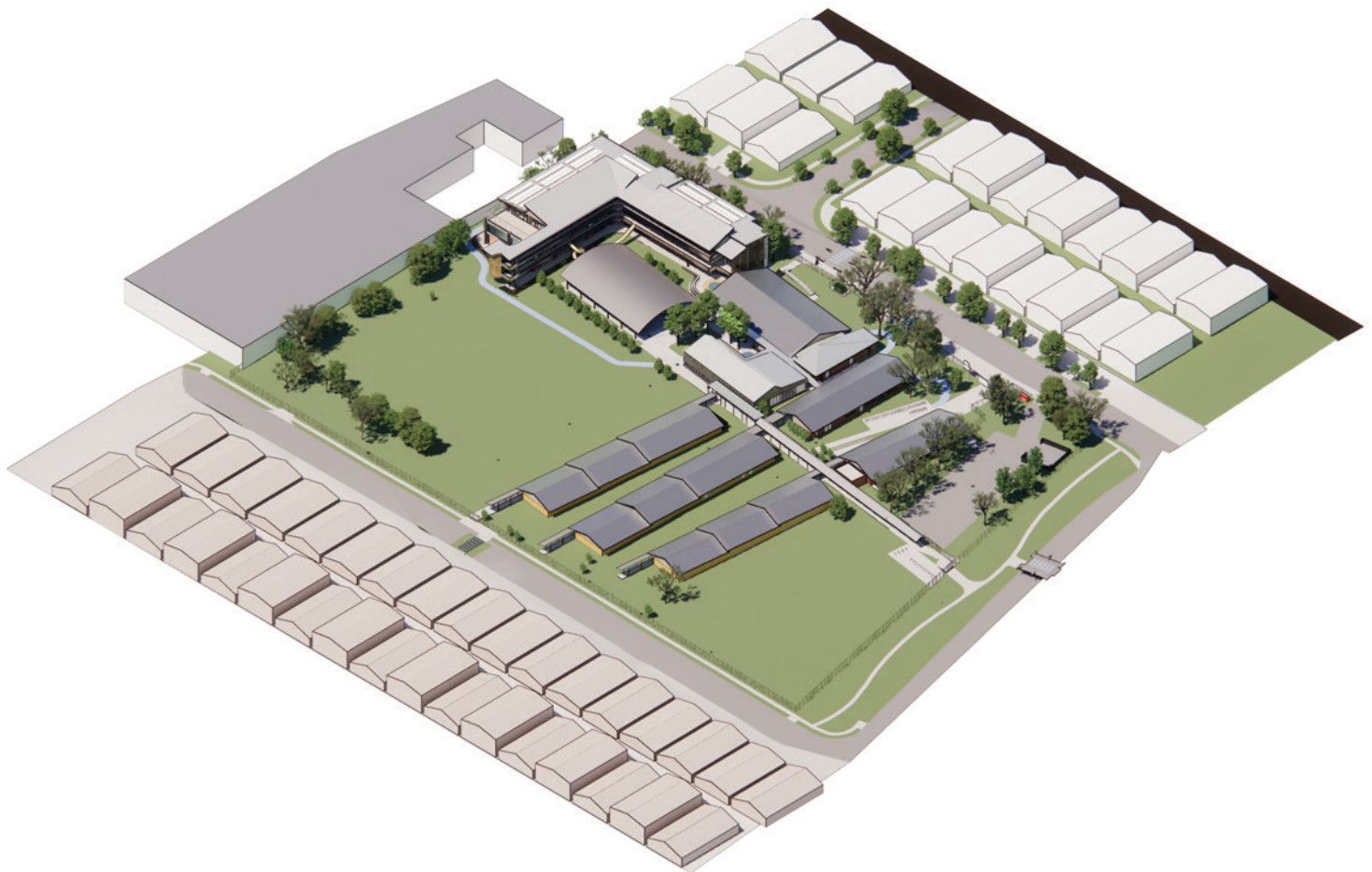


## Proposed changes to the site

---

The John Palmer Public School upgrade includes new buildings and refurbishments to existing buildings, as outlined below and indicated on the future site plan:

- Construction of a new three- storey building facing The Ponds Boulevard which will accommodate 29 permanent learning spaces
- Construction of a new library building
- Relocation of the existing service access to staff car park off The Ponds Boulevard, including alterations to the existing car park to accommodate service vehicles
- One-storey extension to and refurbishment of existing school hall building. The school hall extension will include Outside School Hours Care (OSHC) facilities
- Building Block D will be re-purposed from an existing library to special program spaces and administration
- Refurbishment of Building F to provide one new support unit
- Minor additions and internal refurbishments to Building A
- Removal of existing demountable classroom buildings once alterations and additions have been completed
- Ancillary works to support the alterations and additions including landscaping and service provision.



Aerial view of proposed John Palmer Public School upgrade

# Frequently asked questions

## When will the construction start?

We anticipate approval of the State Significant Development (SSD) application to be granted in mid-2022. Main works will start once the SSD application is approved.

## What is an Environmental Impact Statement (EIS)?

An Environmental Impact Statement (EIS) has been prepared for the SSD application. The EIS contains technical studies, which are an important part of the planning process and provide information to decision makers about the environmental impacts of the project.

Technical studies involve research, site investigations, surveys and assessments, data analysis, and community and stakeholder consultation. They consider traffic, noise, operations, heritage and construction management.

The SSD application (including the EIS) is now on public exhibition and submissions must be lodged directly with DPIE. You can find more information at:

[mpweb.planningportal.nsw.gov.au/major-projects/project/42251](http://mpweb.planningportal.nsw.gov.au/major-projects/project/42251)

## What safety measures will be in place during construction?

School Infrastructure NSW is committed to ensuring that work is completed safely and efficiently and with minimal impact to the local community. Rigorous safety and security measures will be in place for the duration of the works. This will include fencing off the construction area. There will be no access to the construction area by staff or students.

The project team will regularly consult with the school to discuss construction progress. All safety concerns will be addressed. The health, safety and well-being of students, staff and neighbours is our highest priority.

## How will traffic be managed during construction?

A Construction Traffic Management Plan will outline measures to be taken during construction to ensure the safety of staff, students, the local community and our site workers. This plan will include consideration of the current pick-up and drop-off zones, construction vehicle movements, potential amendments to existing street signage and traffic control procedures.

Traffic management will be implemented when required. This includes the use of onsite traffic control personnel to manage the entry and exit of construction vehicles. Site vehicles must give way to pedestrians at all times.

## What steps will be taken to control noise and dust?

Noise and dust control measures will be implemented following planning approval requirements. Hoarding, secure fencing and shade cloth will be erected to reduce noise and dust impacts on the school and residents. Dust from construction works will be hosed down as required.

## What consultation is planned for the local community about the upgrades?

During the SSD process, the EIS will be placed on public exhibition and the community will have the opportunity to comment on the project proposal. SSD projects also require a Social Impact Assessment (SIA) to be completed. As part of this process, community and stakeholder consultation on the proposal has taken place.

## Stay informed



### Website

Stay up to date by visiting the School Infrastructure NSW website  
[schoolinfrastructure.nsw.gov.au](http://schoolinfrastructure.nsw.gov.au)



### Email

Contact the Community Engagement team by emailing  
[schoolinfrastructure@det.nsw.edu.au](mailto:schoolinfrastructure@det.nsw.edu.au)



### Phone

Contact us between 9:00am and 5:00pm, Monday to Friday on **1300 482 651**