



Artist impression of John Palmer Public School upgrade

John Palmer Public School

Project update | June 2023

Project overview

Construction continues on the major upgrade to John Palmer Public School, which will bring improved facilities and support the growing local community. The project will deliver:

- new learning facilities and an additional support learning space.
- a new library and expanded school hall
- additional staff facilities and amenities
- improved outdoor play and learning spaces.

Progress summary

The upgrade is progressing well, with the following works underway: :

- concrete structure for building N is now complete
- preparation for fit out and façade works on building N has started
- service connections for the ground floor and level 1 have started.

Next steps

The contractor will continue work on the project, including:

- structural steel and roofing on building N
- building N fit out and façade works
- timber and steel work on the new library

- services connection for hall refurbishment.

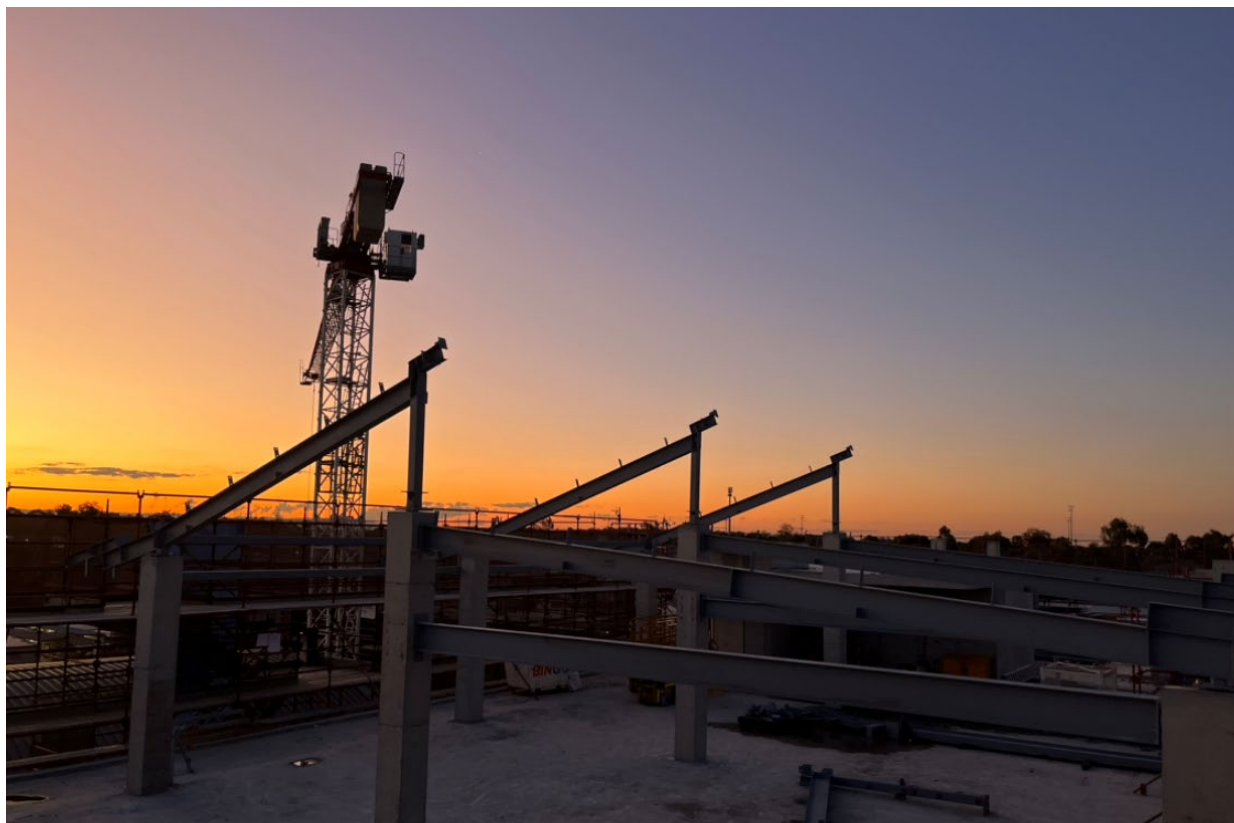
The project is currently is on track for completion by the end of 2023.

Due to restricted pathways, parents are reminded to wait in the designated waiting areas outside the school gates.



John Palmer Public School site map

Structural roofing steel being erected on building N



Construction on building N and COLA looking across school oval



Frequently asked questions

What are the construction working hours?

Construction will continue to be between 7.00 am and 6.00 pm Monday to Friday, and 8.00 am and 1.00 pm on Saturdays. No work will take place on Sundays or public holidays unless notification is provided.

How will dust and noise be managed during construction?

Noise is kept to a minimum as much as possible during construction. Any work activity that could exceed approved construction noise management levels will be managed in accordance with the *Protection of the Environment Operations Act 1997* and the project's Conditions of Approval. Periodic air monitoring will be undertaken, and dust as a result of demolition or excavation, will be hosed as required.

How will traffic impacts be managed during construction?

The contractor's access to the site continues to be through Pebble Crescent and The Ponds Boulevard. Where possible, movement of construction vehicles will be restricted at drop-off and pick-up times to minimise congestion around the school. Traffic control will be in place when required for the safety of students, staff and the local community.

How will the school community be kept safe during construction?

The safety of the school's students, staff, visitors and the local community is our highest priority. Safety measures will be in place including construction site hoarding and fencing to separate the work zone from areas occupied by the school and ensure students are unable to enter construction areas. There will be regular consultation with the school to discuss construction progress.

For further information about how construction impacts are managed on our projects please visit our website at: <https://www.schoolinfrastructure.nsw.gov.au/construction-impacts.html>.

How can we remain updated about the upgrade?

We will continue to share construction updates and information as the project progresses. You can stay updated on the project through our website or by using the contact details provided.

Your feedback on this project is important to us. For more information or to comment please email us at schoolinfrastructure@det.nsw.edu.au or phone 1300 482 651.

