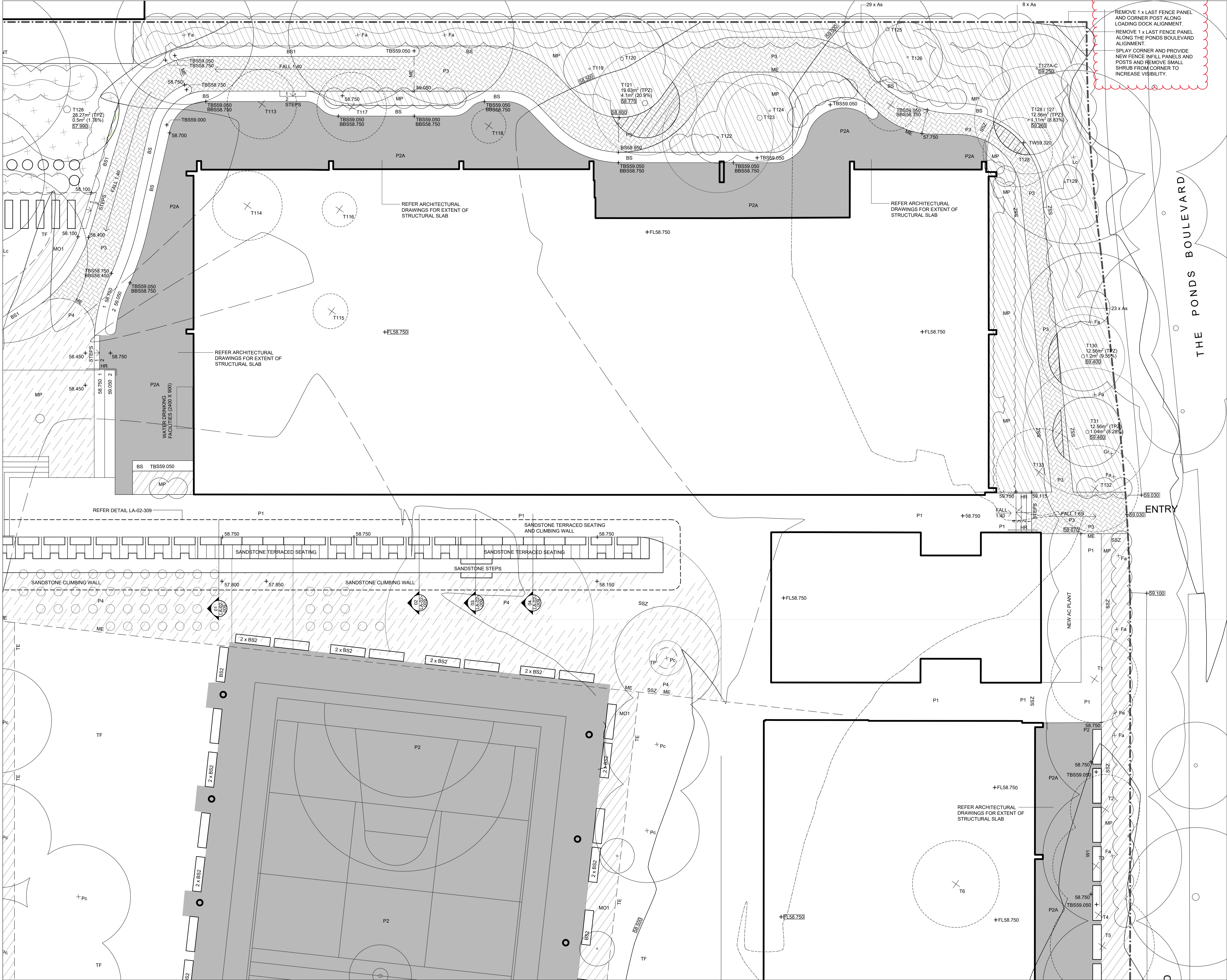
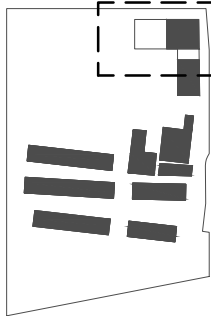
[illegible]



REMOVE 1 x LAST FENCE PANEL AND CORNER POST ALONG LOADING DOCK ALIGNMENT.
REMOVE 1 x LAST FENCE PANEL ALONG THE PONDS BOULEVARD ALIGNMENT.
SPLAY CORNER AND PROVIDE NEW FENCE INFILL PANELS AND POSTS AND REMOVE SMALL SHRUB FROM CORNER TO INCREASE VISIBILITY.

Key Plan:



Drawing Disclaimer:

Do not scale from drawings.
Verify all dimensions on site before commencing work.
Copying or reproduction of this drawing is strictly prohibited without the consent of PTW Architects

Note:

PTW takes no responsibility for external building elements. Anything connected with any design, materials selection, construction or installation of any cladding, facade or external building element must be checked by and remains the responsibility of others, including suitably qualified experts as may be required.

Rev	Amendment	By	Chk**	Date
01	DRAFT 85% DD	GM	GM	22/06/10
02	SECOND ISSUE DD		GM	22/06/21

Rev	Amendment	By	Chk*	Date
-----	-----------	----	------	------

*Registered Architect

DJ	DIANE H. JONES	NSW Arch 4778
----	----------------	---------------

Consultant

Client

SINSW



Architect
PTW Architects
Level 11, 88 Phillip Street
Sydney NSW 2000 Australia
T +61 2 9232 5877
ptw.com.au

Peddie Thorp & Walker P/L
ABN 23 000 454 624
trading as PTW Architects

NSW Nominated Architects
S Parsons Architect No.6098
D Jones Architect No.4778

Project PA030470

John Palmer Public School
85 The Ponds Blvd, The Ponds NSW 2769

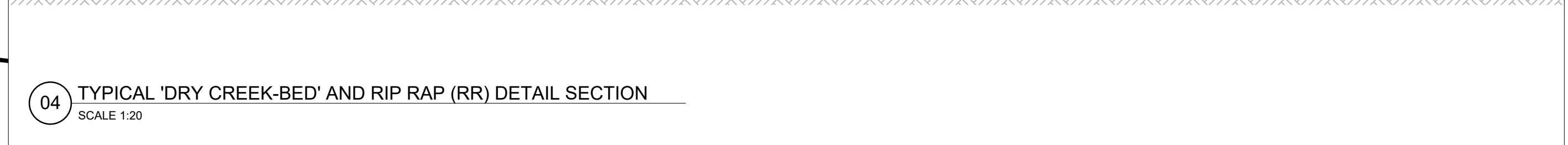
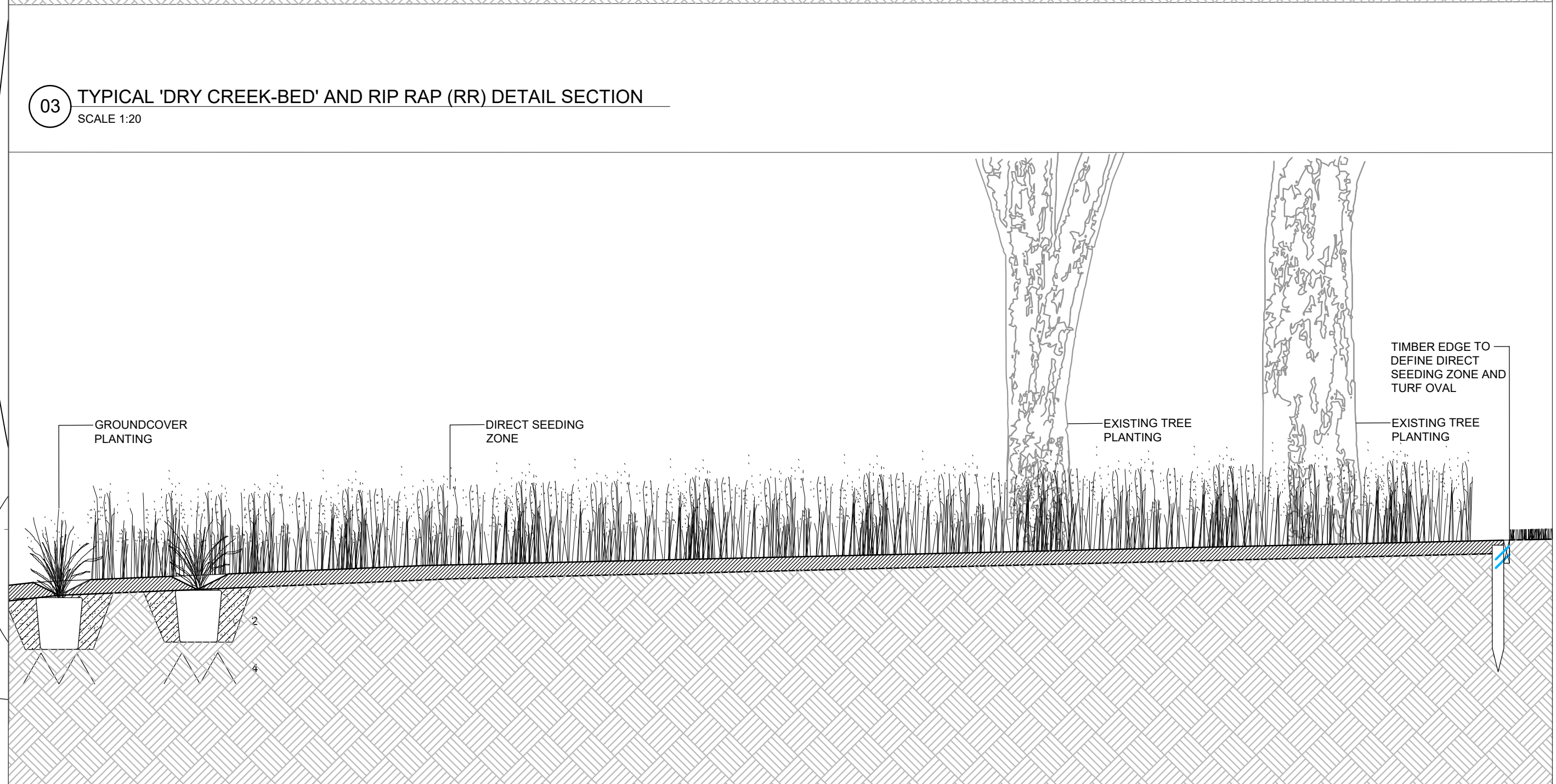
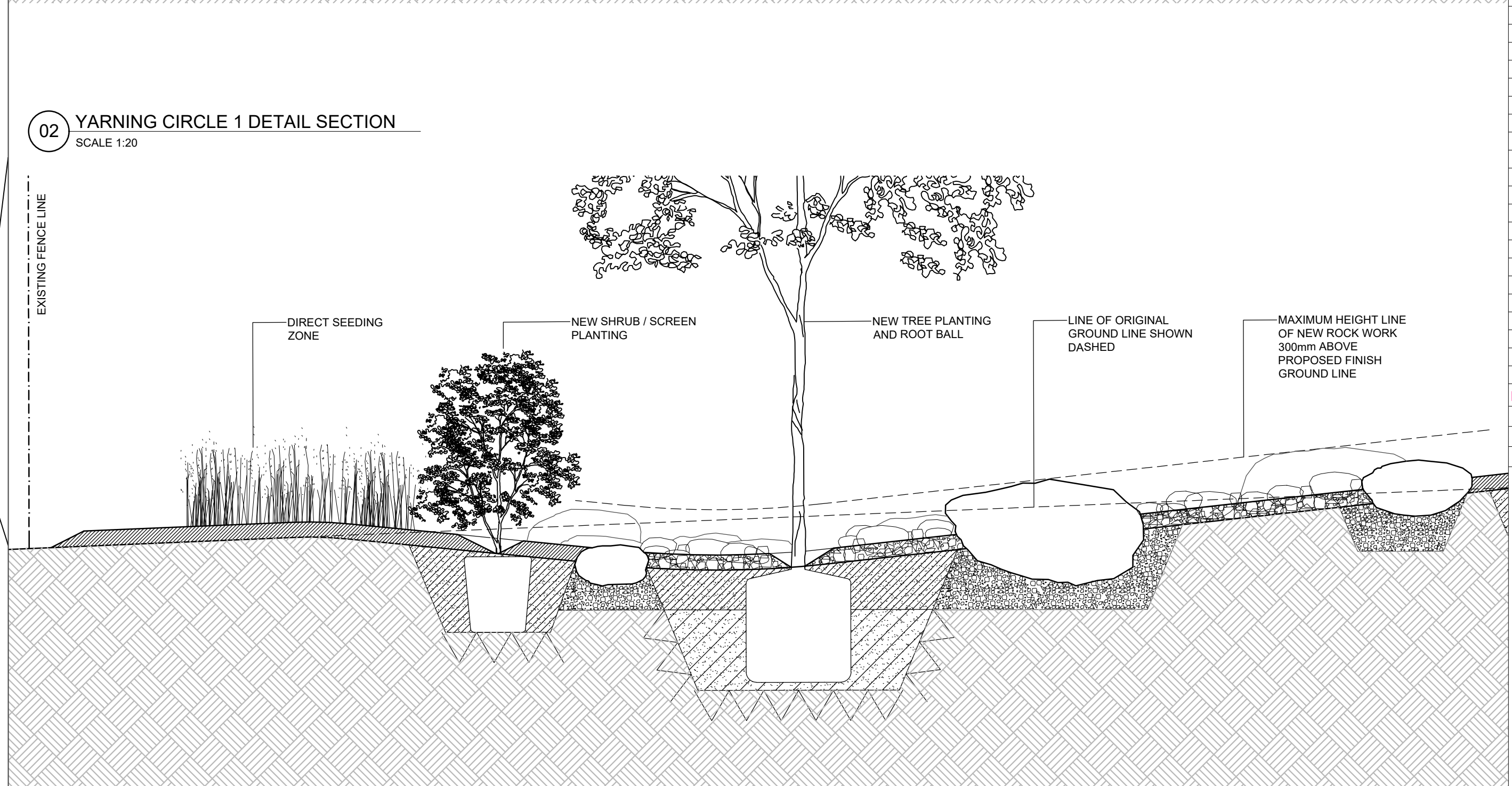
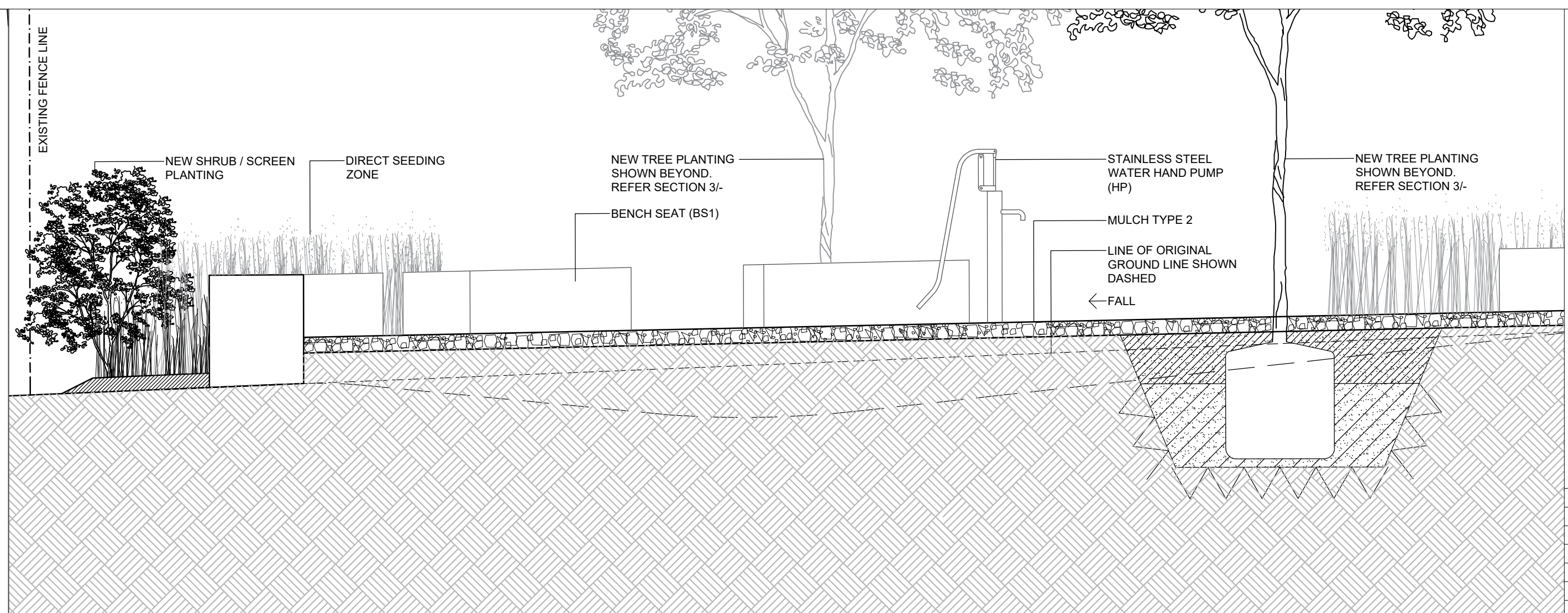
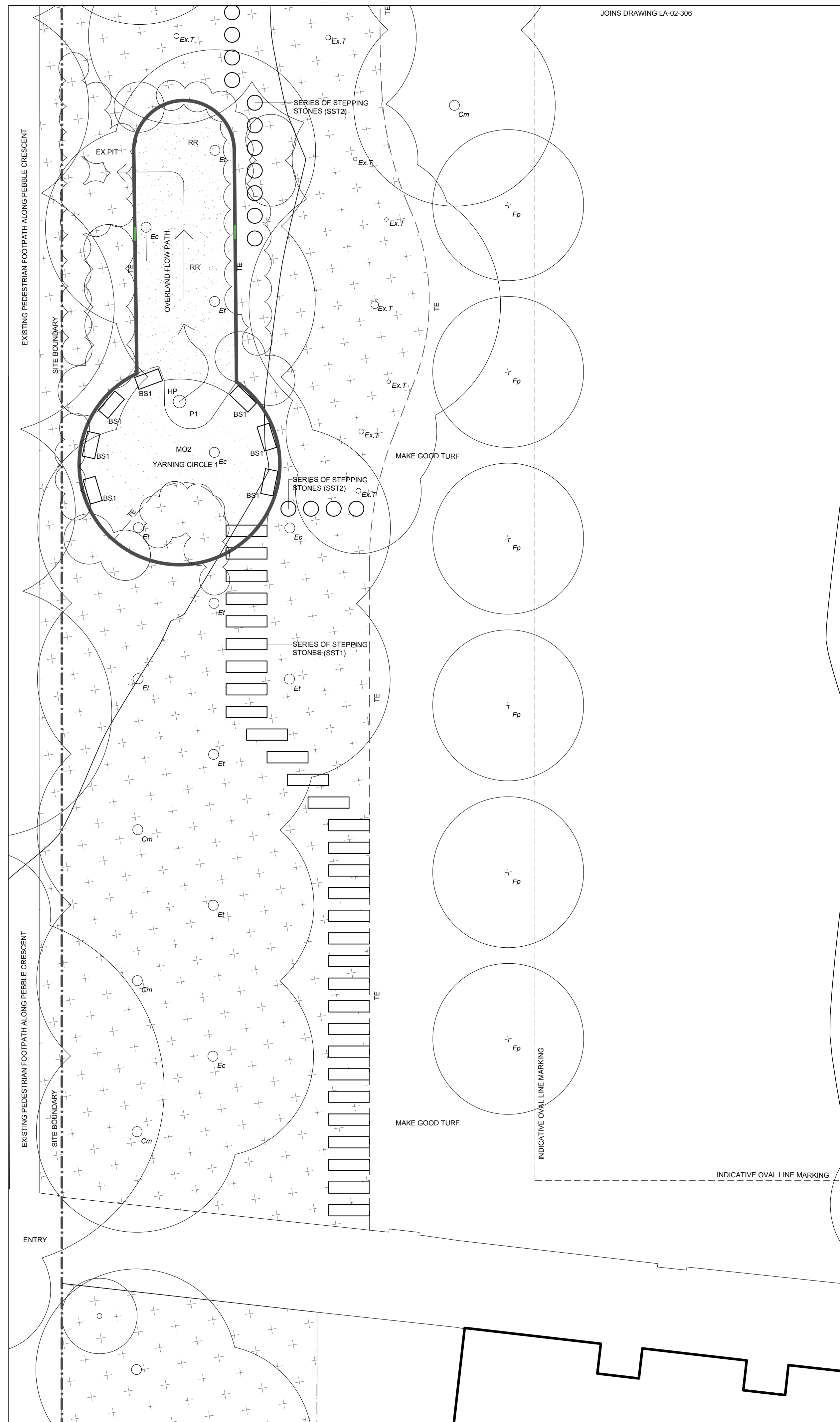
Title

DETAIL LANDSCAPE PLAN
SHEET 1



Drawing Number	Revision
JPPS-LS-SW-DRW-0302	02

Status
DRAFT 85% DD



Key Plan:

The key plan shows the layout of the site. It includes a dashed rectangular area in the upper left, several solid black rectangular shapes representing buildings or parking spaces, and a north arrow pointing towards the top right of the plan.

Drawing Disclaimer:

Do not scale from drawings.
Verify all dimensions on site before commencing work.
Copying or reproduction of this drawing is strictly prohibited without the consent of PTW Architects

Note:

PTW takes no responsibility for external building elements. Anything connected with any design, materials selection, construction or installation of any cladding, facade or external building element must be checked by and remains the responsibility of others, including suitably qualified experts as may be required.

[illegible]

Rev	Amendment	By	Chk*	Date
*Registered Architect				
	DIANE H. JONES	NSW Arch 4778		

Consultant

FOR INFORMATION

Client
SINSW

 | **Education**

Architect
PTW Architects
Level 11, 88 Phillip Street
Sydney NSW 2000 Australia
T +61 2 9232 5877
ptw.com.au

Peddie Thorp & Walker P/L
ABN 23 000 454 624
trading as PTW Architects

NSW Nominated Architects
S Parsons Architect No.6098
D Jones Architect No.4778

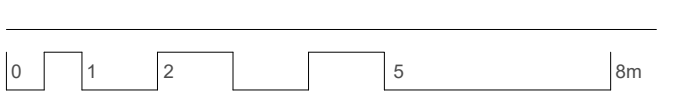
PTW

Project PA030470

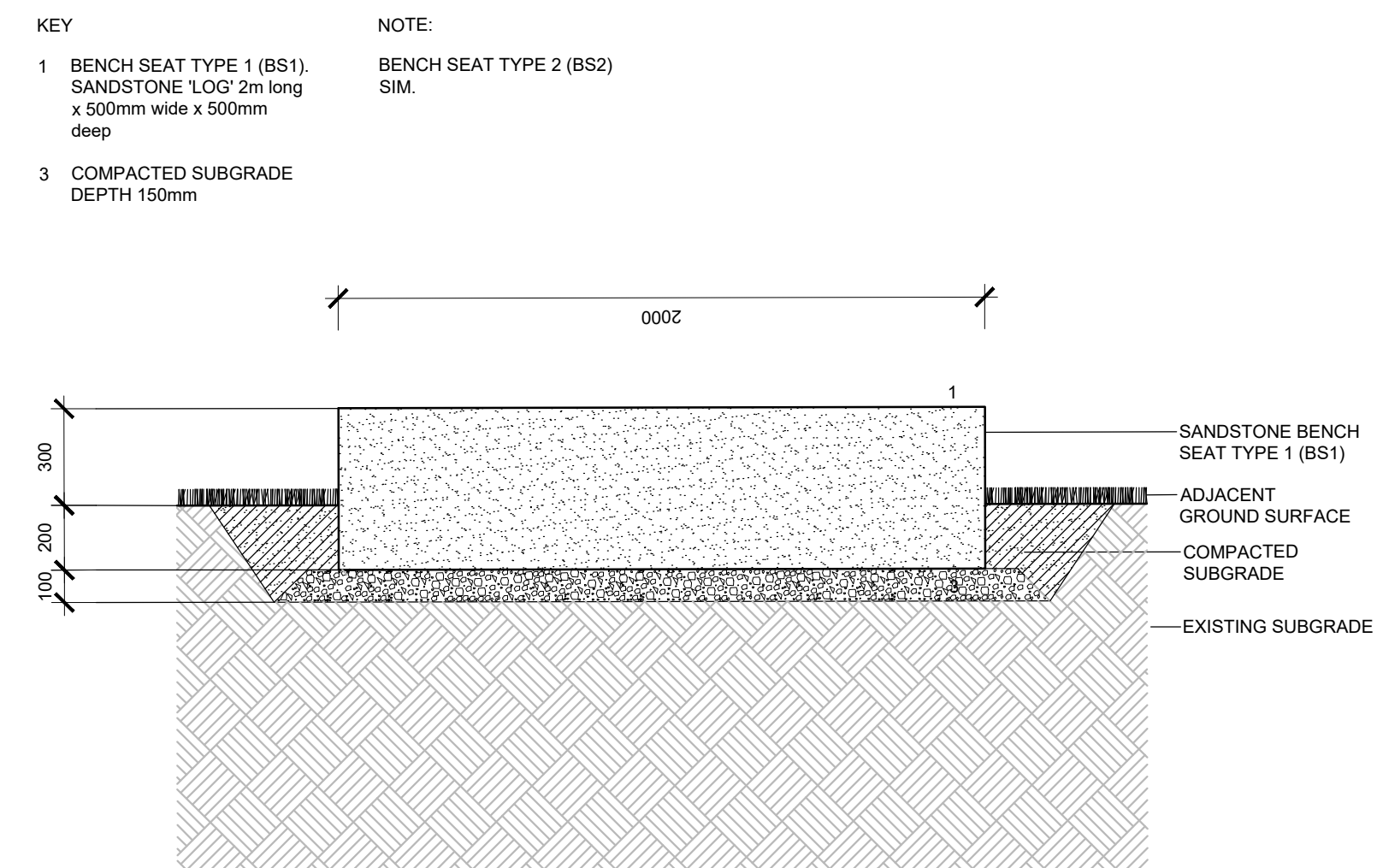
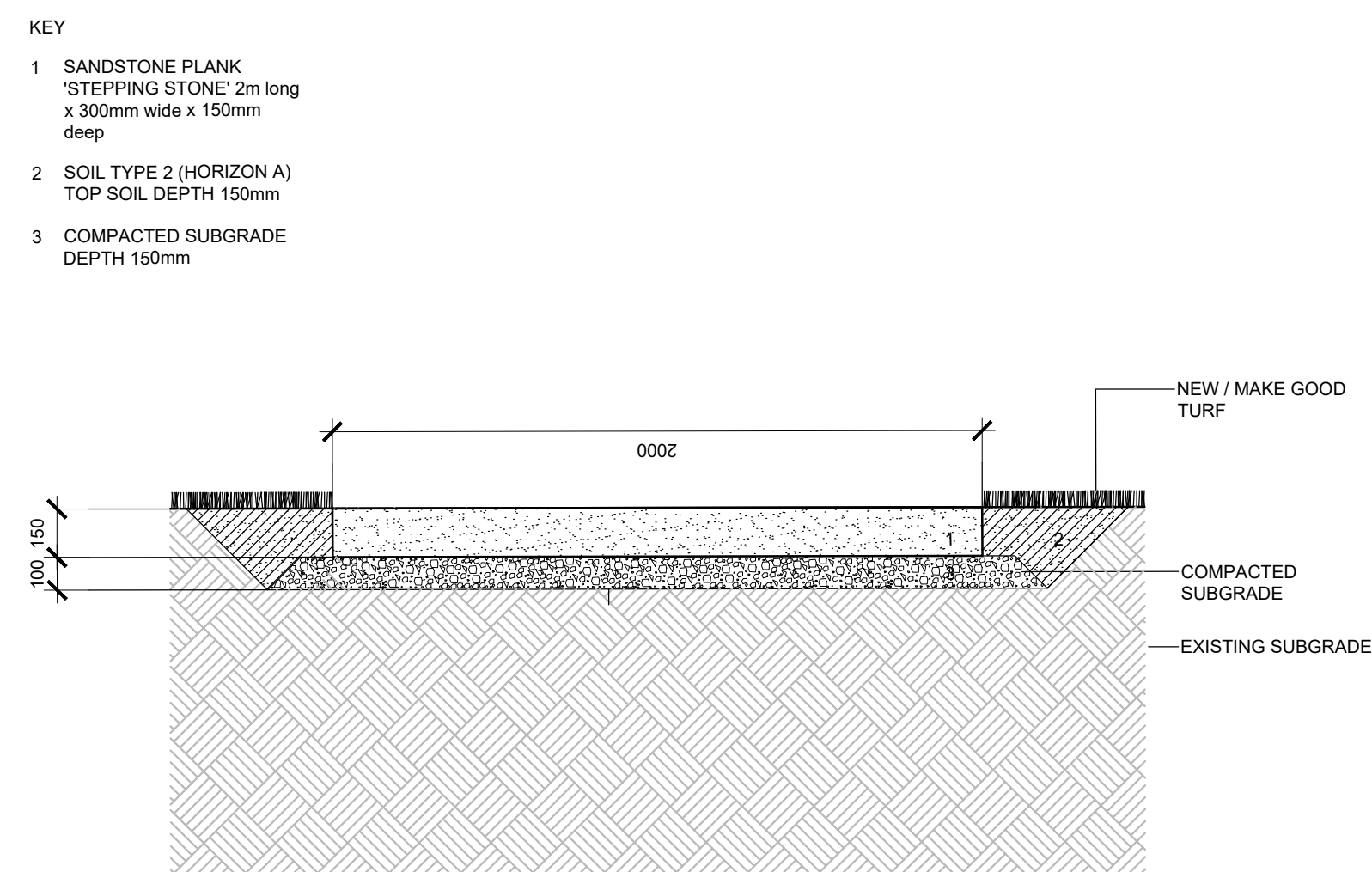
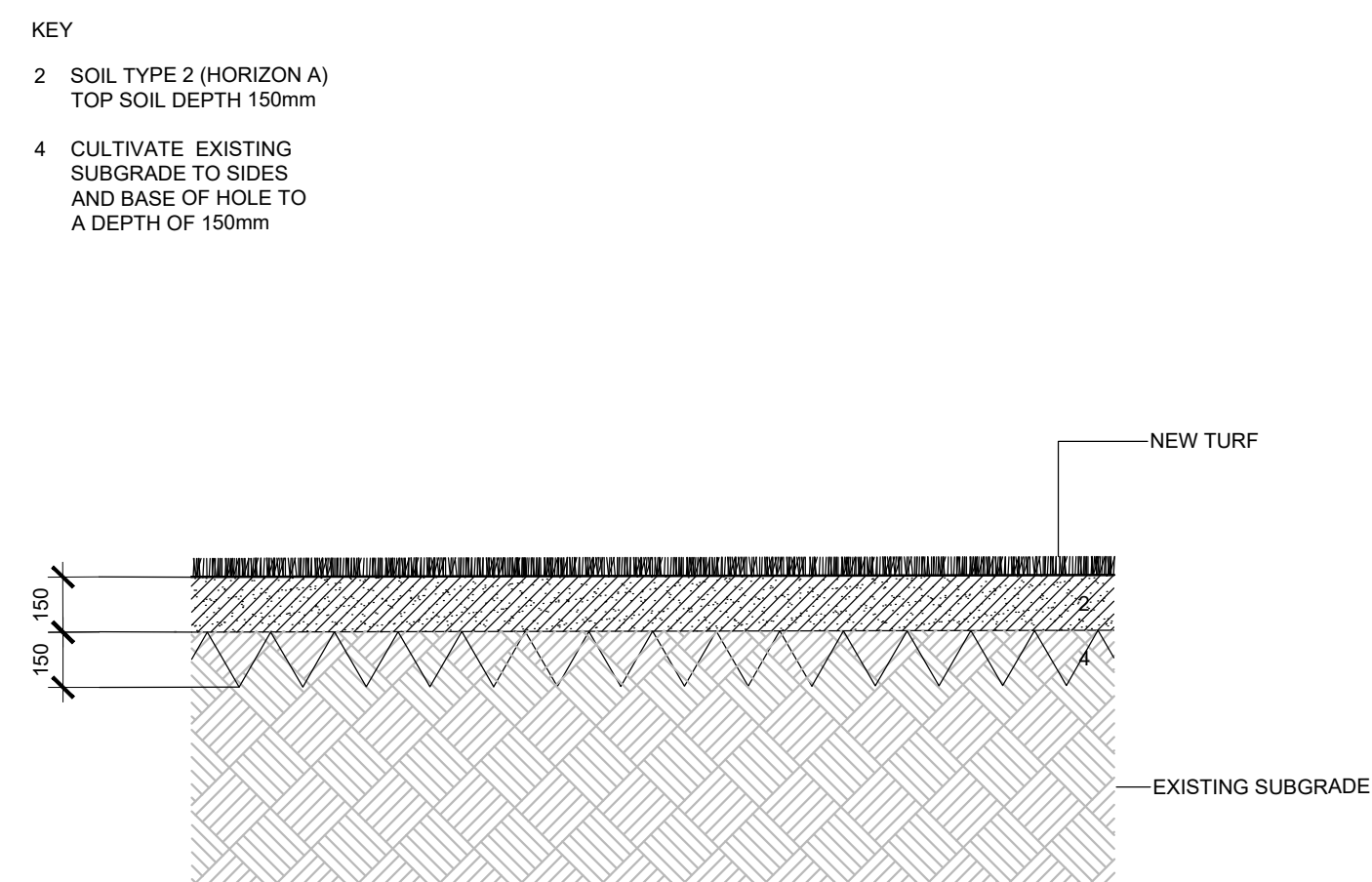
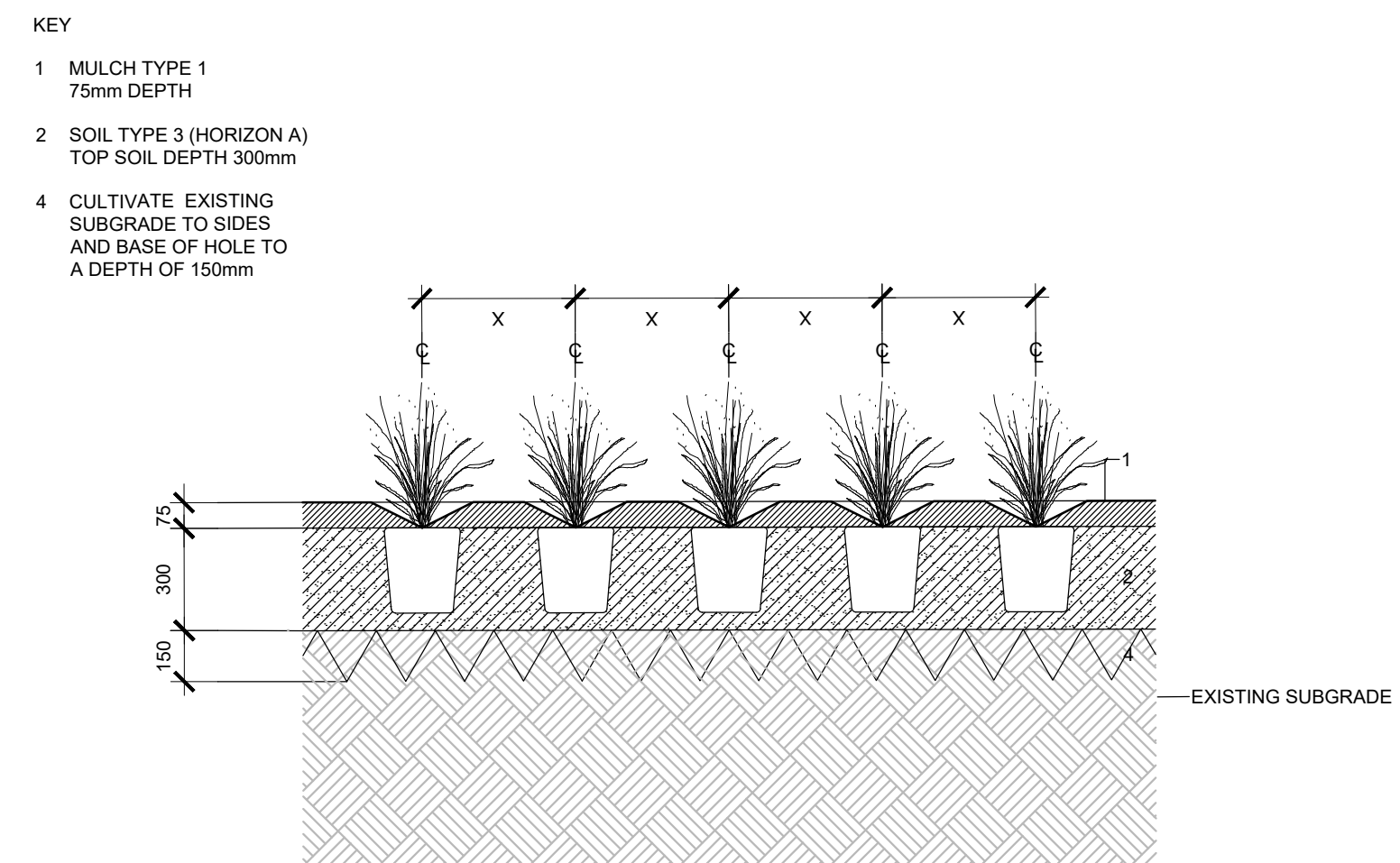
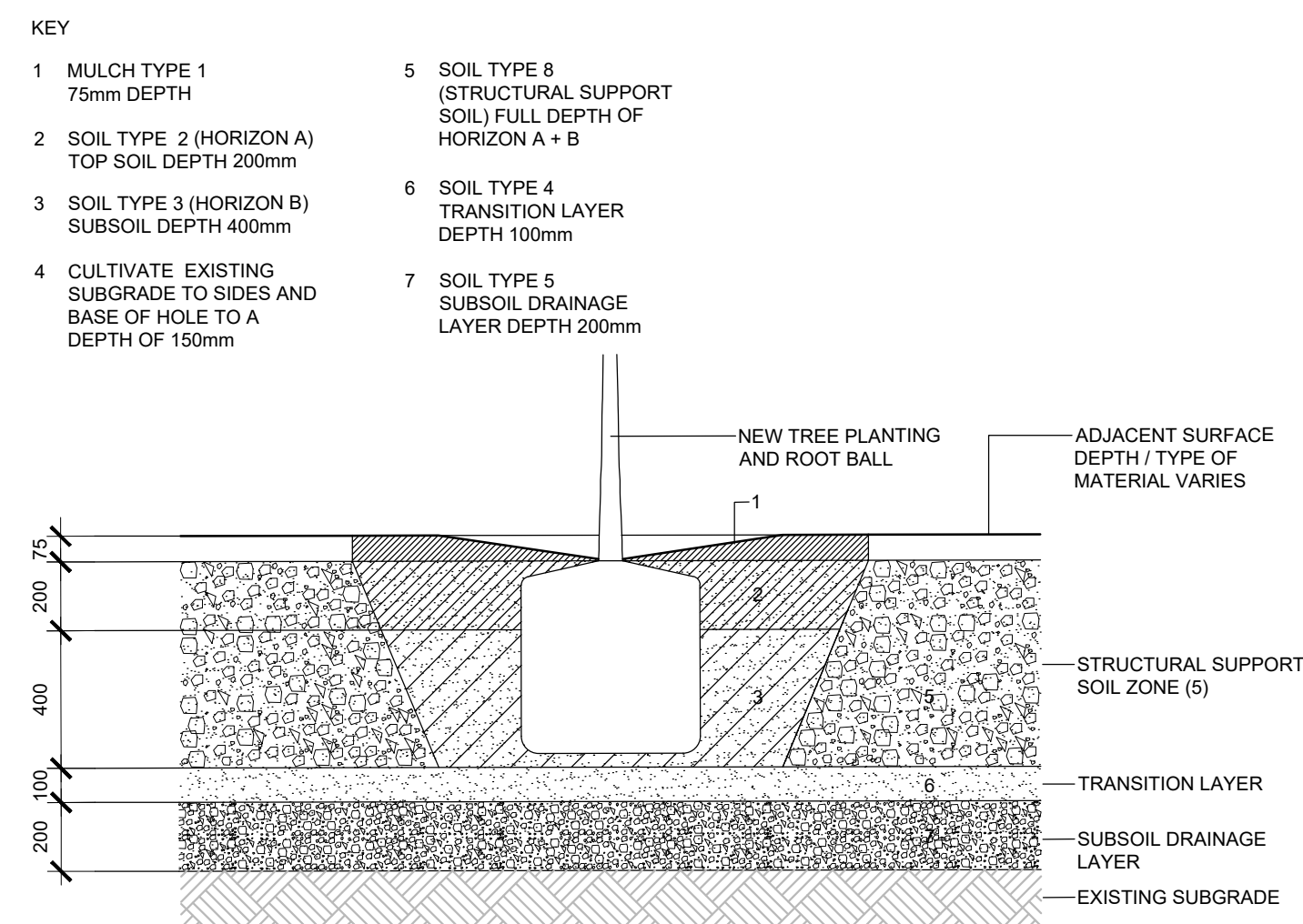
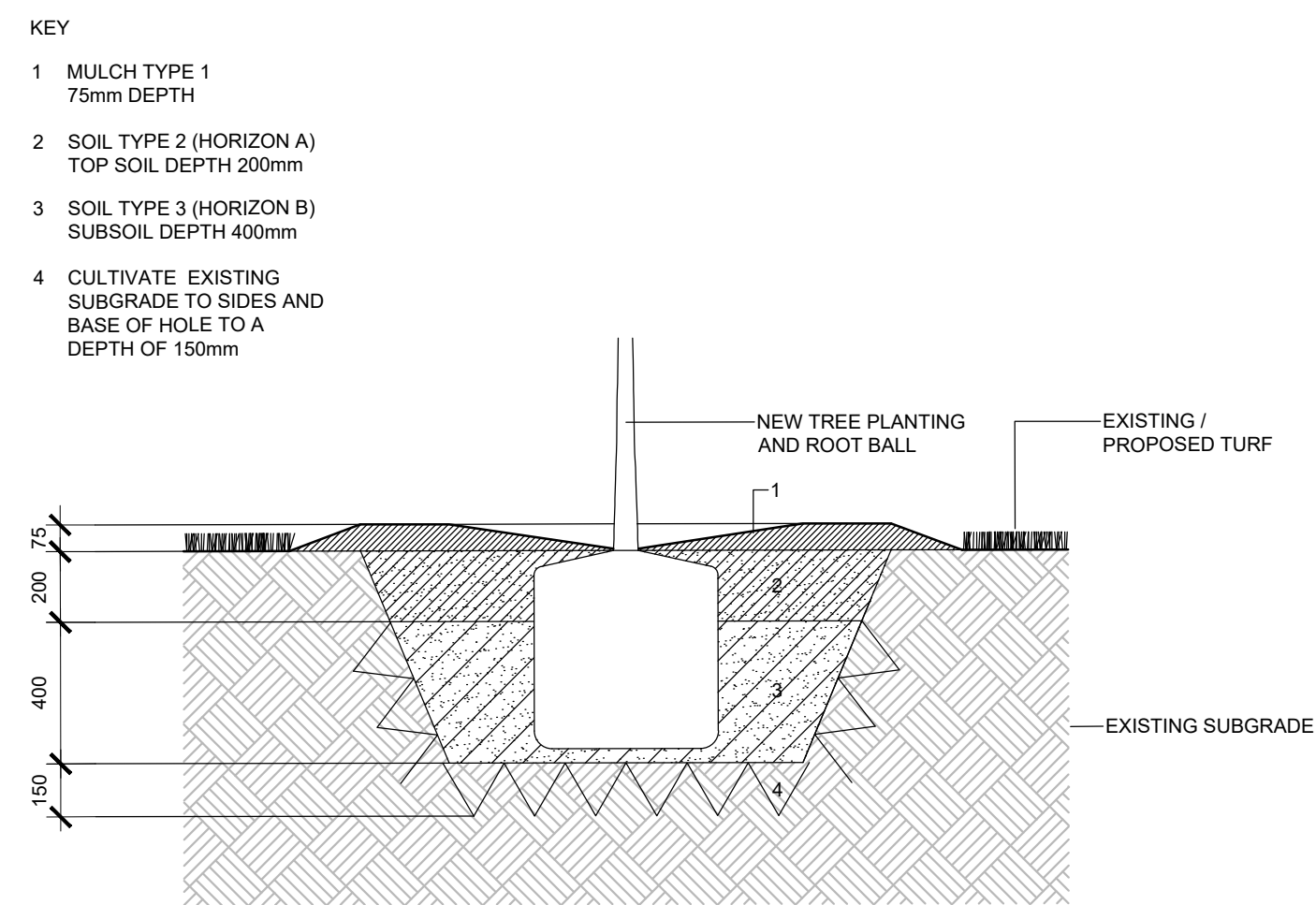
John Palmer Public School
85 The Ponds Blvd, The Ponds NSW 2769

Title

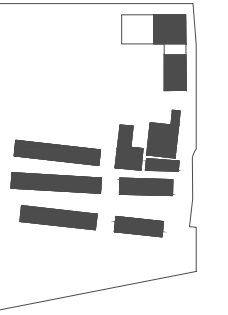
DETAIL LANDSCAPE PLAN
SHEET 6



Drawing Number	Revision
JPPS-LS-SW-DRW-0307	02
Status	
DRAFT 85% DD	



Key Plan:



Drawing Disclaimer:
 Do not scale from drawings.
 Verify all dimensions on site before commencing work.
 Copying or reproduction of this drawing is strictly prohibited without the
 consent of PTW Architects

Rev	Amendment	By	Chk**	Date
01	DRAFT 85% DD	GM	GM	22/06/10
02	SECOND ISSUE DD	GM	GM	22/06/21

Rev	Amendment	By	Chk*	Date
-----	-----------	----	------	------

***Registered Architect**

DJ	DIANE H. JONES	NSW Arch 4778
----	----------------	---------------

Consultant

Client

SINSW



Education

Architect
PTW Architects
Level 11, 88 Phillip Street
Sydney NSW 2000 Australia
T +61 2 9232 5877
ptw.com.au

Peddle Thorp & Walker P/L
 ABN 23 000 454 624
 Trading as PTW Architects

NSW Nominated Architects
 S Parsons Architect No.6098
 D Jones Architect No.4778

Project PA030470

John Palmer Public School

35 The Ponds Blvd, The Ponds NSW 2769

Title

DETAIL SHEET 1



Drawing Number	Revision
JPPS-LS-SW-DRW-0310	02

Status
DRAFT 85% DD