

New building - HB and Hall extension



BRK-101

Austral Brick
Smooth face brick
Symmetry Terracotta



BRK-102
BRK-103 - SOLDIER COURSE

Austral Brick
Smooth face brick
La Paloma 'Miro'



BRK-106 - COLOURS TBC -SOLDIER COURSE

Austral Brick
White Glazed Brick
Colours to be selected



BRK-105

Austral Brick
Glazed Brick
Royal

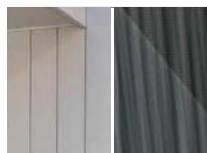


ERG-401

Glazed Tile
For core walls
Colours to be selected
for mural pattern



EWS-101
Universal Anodisers
Anodised aluminium frame
Clear finish



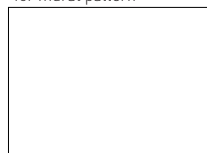
CLG-301 CLG-302
Dominion and SnapSeam
for Soffit Linings
(Standing Seam)
Colour TBC



RWS-201
Galvanised steel water pipe
and brackets with colorbond
steel down pipe transitions
from gutter



GLS-101
Viridian Comfort Plus:
Laminated Glass with
Low E Coating, Neutral 59



GLS-103
Viridian VTough:
Toughened Glass with
Low E Coating, Neutral 59



SCN-101
Arcadia
Match Sun-Shading
*'Arcadia Match Sun-Shading
Grating Panels'*



SCN-102
Arcadia
Louvers Aluminium Extruded
box section aluminium
Colours to be confirmed



SCN-102
Coolite
Fixed metal louvre
in framing system



GLS-102
Viridian Comfort Plus: Laminated
Glass with Low E Coating, Trans-
lucent



EWS-102
Acoustic Louvres,
Clear Anodised Finish



RFS-101
RWS-101
Lysaght
Longline 305 for roof
Colorbond Matt 'Basalt'



BAL-101
Aluminium slat balustrade
panels with galvanised steel
framing



Dominion and SnapSeam panels for wall framing and
panelling

Colorbond Matt 'Basalt'
Colorbond Matt 'Dune'
Colorbond Matt 'Surfmist'



ELG-101 ELG-103

New building - HB



Aboriginal weaving
'Scoops' by Julie-Ann Christian
Inspiration for modelled perforated
metal screens



CON-101
Concrete framing
Keim finish for longevity and quality



SCN-201
SCN-202
Arcadia: Profiled, Perforated
Metal Screens and Support System,
Colours to be confirmed



PAV-101
Concrete /porcelain tiles on
pedestals for access
balconies

Library



GLT Frame
Glue Laminated Timber
(GLT) for internal framing



SCN-203
Arcadia: Profiled, Perforated Metal
Screens and Support System,
Colours to be confirmed (Library)



AMW-201
Galvanised steel round
columns with carved
stone base for
courtyard walkway



JNF-301

NSW GOVERNMENT Department of Planning and Environment
Issued under the Environmental Planning and Assessment Act 1979
Application No: SSD-23330227 Signed: JC
Granted on: 20 May 2022 Sheet no: 41 of 40

Key Plan:



Drawing Disclaimer:
Do not scale from drawings.
Verify all dimensions on site before commencing work.
Copying or reproduction of this drawing is strictly
prohibited without the consent of PTW Architects
Note
PTW takes no responsibility for external building
elements. Anything connected with any design, materials
selection, construction or installation of any cladding,
facade or external building element must be checked by
and remains the responsibility of others, including
suitably qualified experts as may be required.

Rev	Amendment	By	Chk*	Date
B	SSDA SUBMISSION	MB	DJ	21/10/20
A	DRAFT SSDA SUBMISSION	MB	DJ	21/09/24

*Registered Architect
DHJ Diane H Jones NSW Arch 4778

Consultants

Client



Architect
PTW Architects
Level 11, 88 Phillip Street
Sydney NSW 2000 Australia
T +61 2 9232 5877
ptw.com.au
Peddie Thorp & Walker P/L
ABN 23 000 454 624
Trading as PTW Architects
NSW Nominated Architects
5 Parsons Architect No.6098
D Jones Architect No.4778



Project PA030470
John Palmer Public School
85 The Ponds Blvd, The Ponds NSW 2769
Status
SSDA SUBMISSION

Title	Revision
SSDA MATERIALS BOARD	
Drawing Number DA-AR-0501	Revision B



PLANTING SCHEDULE						
SVM	Botanical Name	Common Name	Height x Width	Pot	Spacing	QTY
Tree Planting						
Lc	<i>Albizia julibrissin</i>	Crispa ash	10m x 8m	100L	As Shown	22
Fp	<i>Fraxinus pennsylvanica</i>	Crimm ash	10m x 8m	100L	As Shown	43
Fa	<i>Fraxinus excelsior</i>	Crimm ash	12m x 8m	100L	As Shown	8
Mq	<i>Malaleuca quincernaria</i>	Paperbark	8m x 4m	100L	As Shown	6
Pc	<i>Platanus chinensis</i>	Chinese platano	8m x 8m	100L	As Shown	38
Sj	<i>Synsphaera glauca</i>	Turpentine tree	20m x 6m+	200L	As Shown	9

Tree Planting (Cumberland Plain Woodland)						
Cm	<i>Corymbia maculata</i>	Spotted gum	15m x 6m	25L	As Shown	30
Ec	<i>Eucalyptus crebra</i>	Ironbark	18m x 8m	25L	As Shown	19
Er	<i>Eucalyptus fibrosa</i>	Red ironbark	18m x 8m	25L	As Shown	11
Et	<i>Eucalyptus tereticornis</i>	Forest red gum	18m x 10m	25L	As Shown	13

Shrub Planting						
Al	<i>Azalea smithii</i>	Lily lily	3m x 2m	25L	As Shown	70
Ca	<i>Callistemon salignus</i>	Willow bottlebrush	7m x 8m	25L	As Shown	4
Mo	<i>Myrica laevis</i>	Willow	7m x 8m	25L	As Shown	4
Pv	<i>Pittosporum undulatum</i>	Mock orange	8m x 5m	25L	As Shown	3
Ri	<i>Raphanopis indica</i>	Indian hawthorn	1.5m x 1.5m	25L	As Shown	100
Wf	<i>Weinmannia racemosa</i>	Coastal rosemary	1.5-2m x 1m	25L	As Shown	45

Groundcovers						
Cl	<i>Carex inversa</i>	Knob sedge	0.7m x 0.7m	150mm	As Shown	1000
Dr	<i>Dianella revoluta</i>	Blue berry lily	0.7m x 0.7m	150mm	As Shown	670
Lj	<i>Lomandra longifolia</i>	Mat rush	0.7m x 0.7m	150mm	As Shown	1000
Ju	<i>Juncus subulatus</i>	Common rush	0.6m x 0.5m	150mm	As Shown	1000

Groundcover/Seedling (Cumberland Plain Woodland)**						
Dl	<i>Dianella longifolia</i>	Flax lily	0.7m x 0.7m	-	Direct seeded	TOTAL AREA 1020m ²
Dr	<i>Dianella revoluta</i>	Mat rush	0.7m x 0.7m	-	Direct seeded	
Lj	<i>Lomandra longifolia</i>	Mat rush	0.7m x 0.7m	-	Direct seeded	
Ju	<i>Juncus subulatus</i>	Common rush	0.7m x 0.7m	-	Direct seeded	
Th	<i>Themeda australis</i>	Kangaroo grass	0.7m x 0.7m	-	Direct seeded	

** Indicative species identified above, including suitable cover crop. Develop native seed mix, including planting (seedling) management and techniques with Greening Australia - Cumberland Seed Production Area (SPA). <https://greeningaustralia.org>

TREE REMOVAL SCHEDULE						
Tree numbers are referenced from the John Palmer Primary School Arboricultural Impact Assessment by Ecological Australia, 30 September 2020						
1	<i>Corymbia maculata</i>	Spotted gum *	113	<i>Fraxinus griffithii</i>	Evergreen ash	* <i>Corymbia maculata</i> (Spotted gum) and <i>Eucalyptus</i> spp. are listed in the EPFO, clause DQ22 Landscape Software, 92.28 - Hazardous Trees (Plants as a tree that may shed large branches). The EPFO states: "If a specimen of a species prone to land drop exists as a mature tree on site, carefully consider its location relative to the proposed future use of the surrounding area. Review the design and species and assess the suitability for retention, with a view to minimising the potential risk. Consult a qualified arborist to review existing trees and assess the risk, as well as provide management guidelines and measures to reduce stress and the potential for limb drop."
2	<i>Eucalyptus fibrosa</i>	Red ironbark *	114	<i>Fraxinus griffithii</i>	Evergreen ash	
3	<i>Eucalyptus crebra</i>	Narrow-leaved ironbark *	115	<i>Fraxinus griffithii</i>	Evergreen ash	
4	<i>Angophora costata</i>	Smooth-barked apple	117	<i>Fraxinus griffithii</i>	Evergreen ash	
5	<i>Corymbia maculata</i>	Spotted gum *	128	<i>Eucalyptus crebra</i>	Narrow-leaved ironbark *	
6	<i>Corymbia maculata</i>	Spotted gum *	132	<i>Corymbia maculata</i>	Spotted gum *	
8	<i>Corymbia maculata</i>	Spotted gum *	133	<i>Eucalyptus crebra</i>	Narrow-leaved ironbark *	
10	<i>Corymbia maculata</i>	Spotted gum *				
11	<i>Corymbia maculata</i>	Spotted gum *				
19	<i>Eucalyptus fibrosa</i>	Red ironbark				
20	<i>Corymbia maculata</i>	Spotted gum *				
33	<i>Corymbia maculata</i>	Spotted gum *				
34	<i>Corymbia maculata</i>	Spotted gum *				
35	<i>Corymbia maculata</i>	Spotted gum *				
36	<i>Tridactyla seabrae</i>	Chinese tallow **				** <i>Tridactyla seabrae</i> (Chinese tallow) is listed on the NSW Department of Primary Industries web site as "fast becoming an invasive environmental weed of water courses and native vegetation areas". https://weeds.dpi.nsw.gov.au/Weeds/Data/DS
48	<i>Eucalyptus sp.</i>	Eucalypt sp				
50	<i>Eucalyptus tereticornis</i>	Forest red gum				
64A - 64G	<i>Malaleuca sp.</i>	Malaleuca				The Arborist report identifies the trees retention value as "low".

- KEY
- 1 NATIVE LANDSCAPE PLANTING SWALE
 - BUFFER TREE PLANTING WITH DENSE NATIVE GROUND COVER PLANTING TO CAPTURE, SLOW AND FILTER STORMWATER RUN-OFF
 - 2 PROVIDE OUTDOOR LEARNING ZONES DIRECTLY CONNECTED TO HOMESITES TO ALLOW FLEXIBLE LEARNING
 - 1 ON 1 SMALL GROUP
 - WHOLE OF CLASS LEARNING
 - 3 EXTERNAL ACTIVE PLAY ZONE PROVIDE NEW GROUND SURFACE TREATMENT CONNECTED TO STEPPED SANDSTONE RETAINING ELEMENTS AND SLIDES WITH OPPORTUNITIES TO EXPLORE AND REFLECT LOCAL STORIES IN THE FORM OF COLOUR AND GRAPHICS
 - 4 NEW GROUND SURFACE TREATMENT TO COLA NEW GAMES COURT LINE MARKINGS
 - EXPLORE AND REFLECT LOCAL STORIES IN THE FORM OF COLOUR AND GRAPHICS
 - 5 NEW GROUND SURFACE TREATMENT TO DEFINE CONNECTION BETWEEN LIBRARY AND HALL
 - EXPLORE AND REFLECT LOCAL STORIES IN THE FORM OF COLOUR AND GRAPHICS
 - 6 ACCESS WALKWAY LOOP ALONG THE PERIMETER OF NEW BUILDINGS LINKING NEW BUILDINGS WITH EXISTING SCHOOL AND OVAL
 - 7 "ART WALL"
 - EXPLORE AND REFLECT LOCAL STORIES IN THE FORM OF COLOUR AND GRAPHIC

LEGEND

SITE BOUNDARY

EXISTING MAJOR CONTOUR (1m INTERVALS)

EXISTING MINOR CONTOUR

EXISTING CONTOUR REMOVED

BS BENCH SEATING, CONCRETE

BS1 SANDSTONE BLOCK SEATING

HR HANDRAIL

HRB BALUSTRADE WITH INTEGRATED HANDRAIL

ME METAL EDGE

EXISTING LEVEL

PROPOSED NEW LEVEL

NEW TURF (TF)

NEW GROUND COVER MASS

MULCH ONLY

P1 PAVING TYPE 1 CONCRETE PAVING

P2 PAVING TYPE 2 CONCRETE PAVING WITH APPLIED PAINTED GRAPHICS

P3 PAVING TYPE 3 PERMEABLE PAVING HYDROCON HYDROSTON 90

P4 PAVING TYPE 4 SANDSTONE STEPPING STONES (PLANKS AND STEPPING STONES)

EXISTING TREE TO BE RETAINED

EXISTING TREE TO BE REMOVED. REFER TREE REMOVAL SCHEDULE ABOVE. # REFER ARBORIST REPORT

NEW TREE PLANTING. Gs Genus species REFER PLANTING SCHEDULE

P5 PAVING TYPE 5 RUBBER SOFTFALL PAVING, SUBSTRACT THICKNESS TO SUIT PLAY / FALL CONDITION

TFR TURF, REINFORCED FOR VEHICLE ENTRY

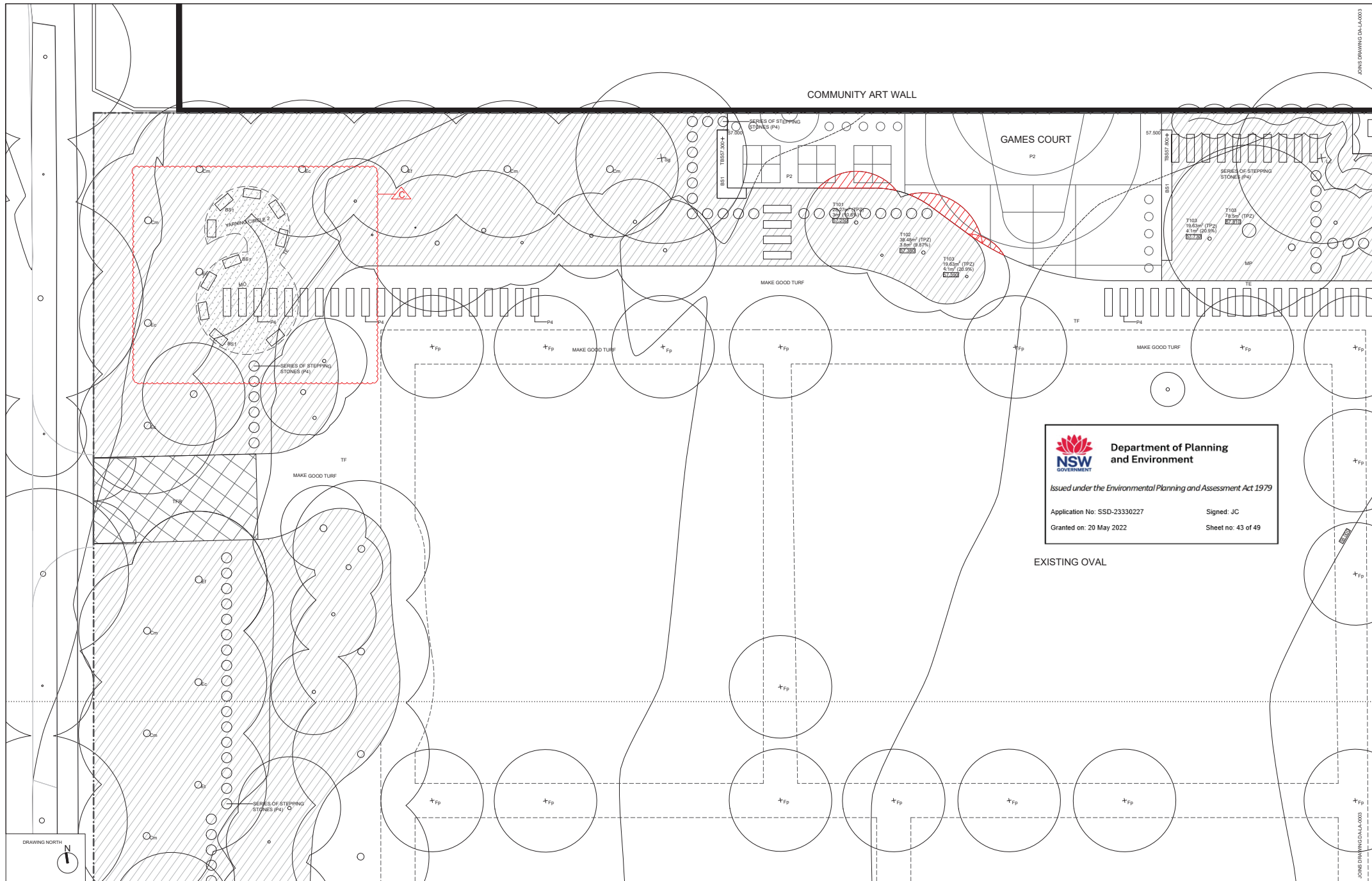
W1 WALL TYPE 1, CONCRETE WALL, EDDING

Department of Planning and Environment

Issued under the Environmental Planning and Assessment Act 1979

Application No: SSD-23330222 Signed: JC

Granted on: 20 May 2022 Sheet no: 42 of 49



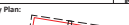

Department of Planning and Environment

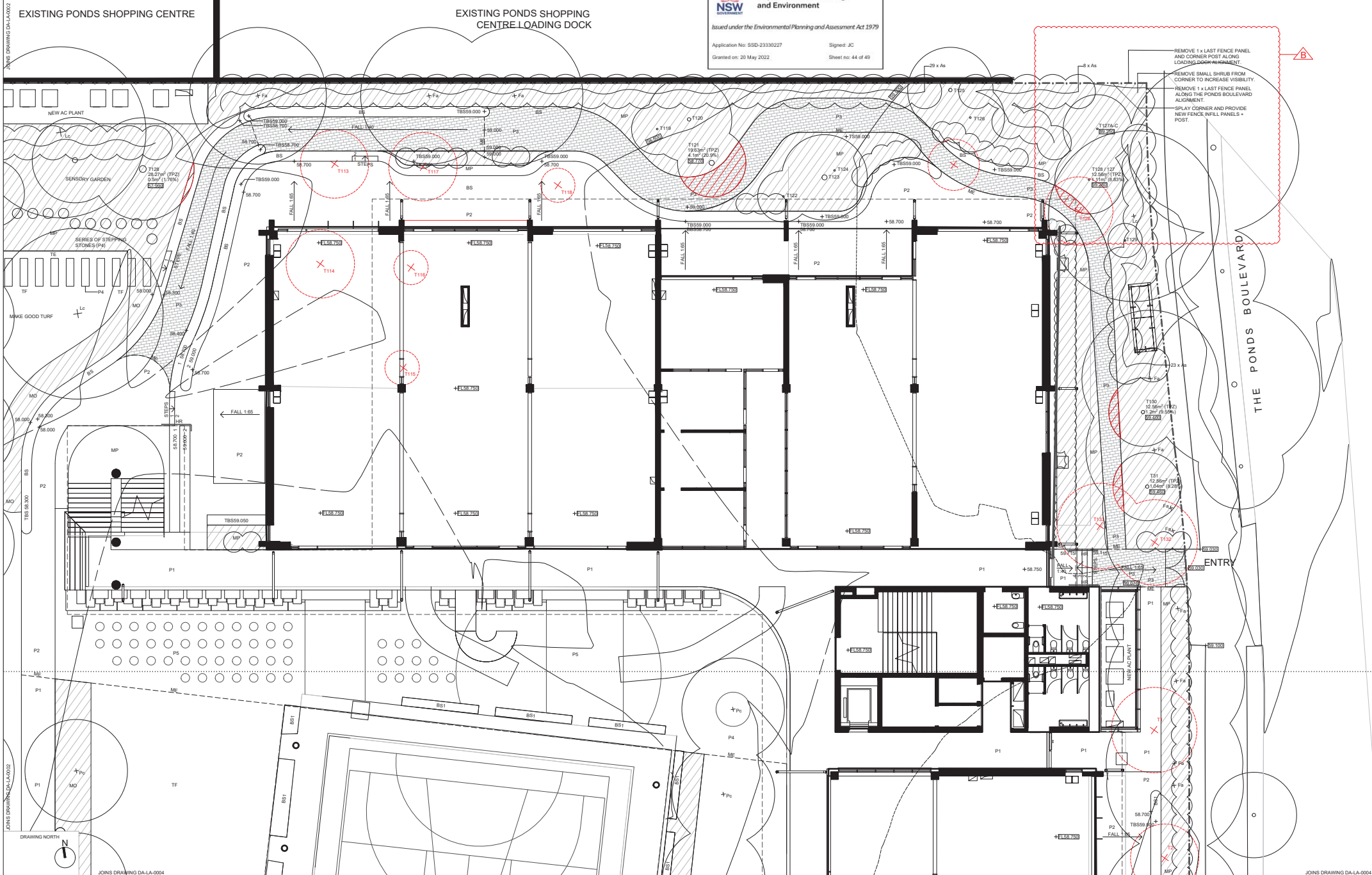
Issued under the Environmental Planning and Assessment Act 1979

Application No: SSD-23330227 Signed: JC

Granted on: 20 May 2022 Sheet no: 43 of 49

EXISTING OVAL

<div>Key Plan:</div> <div></div> <div><div>DRAWING NORTH</div><div></div></div>	<div>Drawing Disclaimer:</div> <div>Do not scale from drawings. Verify all dimensions on site before commencing work. Copying or reproduction of this drawing is strictly prohibited without the consent of PTW Architects</div> <div>Note</div> <div>PTW takes no responsibility for external building elements. Anything connected with any design, materials selection, construction or installation of any cladding, facade or external building element must be checked by and remains the responsibility of others, including suitably qualified experts as may be required.</div>	<table><tr><th>Rev</th><th>Amendment</th><th>By</th><th>CHK</th><th>Date</th></tr><tr><td>A</td><td>SSDA SUBMISSION</td><td>GM</td><td>GM</td><td>21/10/08</td></tr><tr><td>B</td><td>RESPONSE TO SUBMISSION</td><td>GM</td><td>GM</td><td>22/01/14</td></tr></table>	Rev	Amendment	By	CHK	Date	A	SSDA SUBMISSION	GM	GM	21/10/08	B	RESPONSE TO SUBMISSION	GM	GM	22/01/14	<div>*Registered Architect</div> <div>DHJ Diane H Jones NSW Arch 4778</div> <div>**Registered Landscape Architect</div> <div>GM Glenn McIlraith A&A</div>	<div>Consultants</div> <div>Client</div> <div><div><div>NSW GOVERNMENT</div></div><div>Education</div></div>	<div>Architect</div> <div>PTW Architects</div> <div>Level 11, 88 Phillip Street</div> <div>Sydney NSW 2000 Australia</div> <div>T +61 2 9232 5877</div> <div>ptw.com.au</div> <div><div><div>NSW Nominated Architects</div></div><div>ABN 23 000 454 624</div><div>Trading as PTW Architects</div><div>D Jones Architect No.4778</div></div>	<div>Project</div> <div>John Palmer Public School</div> <div>85 The Ponds Blvd, The Ponds NSW 2769</div> <div><div>Status</div><div>RESPONSE TO SUBMISSION</div></div>	<div>Title</div> <div>DETAIL LANDSCAPE PLAN SHEET 1</div> <div><div>Drawing Number</div><div>DA-LA-0002</div></div> <div><div>Revision</div><div>B</div></div>
	Rev	Amendment	By	CHK	Date																	
A	SSDA SUBMISSION	GM	GM	21/10/08																		
B	RESPONSE TO SUBMISSION	GM	GM	22/01/14																		



Key Plan:

Drawing North

JOINS DRAWING DA-LA-0004

Drawing Disclaimer:
Do not scale from drawings.
Verify all dimensions on site before commencing work.
Copying or reproduction of this drawing is strictly prohibited without the consent of PTW Architects.

Note:
PTW takes no responsibility for external building elements. Anything connected with any design, materials selection, construction or installation of any cladding, facade or external building element must be checked by and remains the responsibility of others, including suitably qualified experts as may be required.

Rev	Amendment	By	CHK	Date
A	SSDA SUBMISSION	GM	GM	21/10/08
B	RESPONSE TO SUBMISSION	GM	GM	21/12/06
C	RESPONSE TO SUBMISSION	GM	GM	22/01/14

***Registered Architect**
DHJ Diane H Jones NSW Arch 4778

****Registered Landscape Architect**
GM Glenn McIlraith AILA

Consultants

Client

Architect
PTW Architects
Level 11, 88 Phillip Street
Sydney NSW 2000 Australia
T +61 2 9232 5877
ptw.com.au

Peddle Thorp & Walker P/L
ABN 23 000 454 624
Trading as PTW Architects

NSW Nominated Architects
5 Parramatta Arch No. 8098
D Jones Architect No. 4778

PTW

Project
John Palmer Public School
85 The Ponds Blvd, The Ponds NSW 2769

Status
RESPONSE TO SUBMISSION

DETAIL LANDSCAPE PLAN SHEET 2

Drawing Number
DA-LA-0003

Revision
C

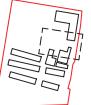





Department of Planning
and Environment

Issued under the Environmental Planning and Assessment Act 1979

Application No: SSD-2339227
Signed: JC
Granted on: 20 May 2022
Sheet no: 45 of 49

Key Plan:





Drawing Disclaimer:
Do not scale from drawings.
Verify all dimensions on site before commencing work.
Copying or reproduction of this drawing is strictly prohibited without the consent of PTW Architects

Note:
PTW takes no responsibility for external building elements. Anything connected with any design, materials selection, construction or installation of any cladding, facade or external building element must be checked by and remains the responsibility of others, including suitably qualified experts as may be required.

Rev	Amendment	By	CHK	Date	Registered Architect
A	SSDA SUBMISSION	GM	GM	21/10/08	DHJ Diane H Jones NSW Arch 4778
B	RESPONSE TO SUBMISSION	GM	GM	22/01/14	Registered Landscape Architect GM Glenn McInnis AILA

Consultants	Client




Education

Architect
PTW Architects
Level 11, 88 Phillip Street
Sydney NSW 2000 Australia
T +61 2 9232 5877
ptw.com.au

Peddie Thorp & Walker P/L
ABN 23 000 454 624
Trading as PTW Architects

NSW Nominated Architects
5 Parramatta Architect No.8098
D Jones Architect No.4778



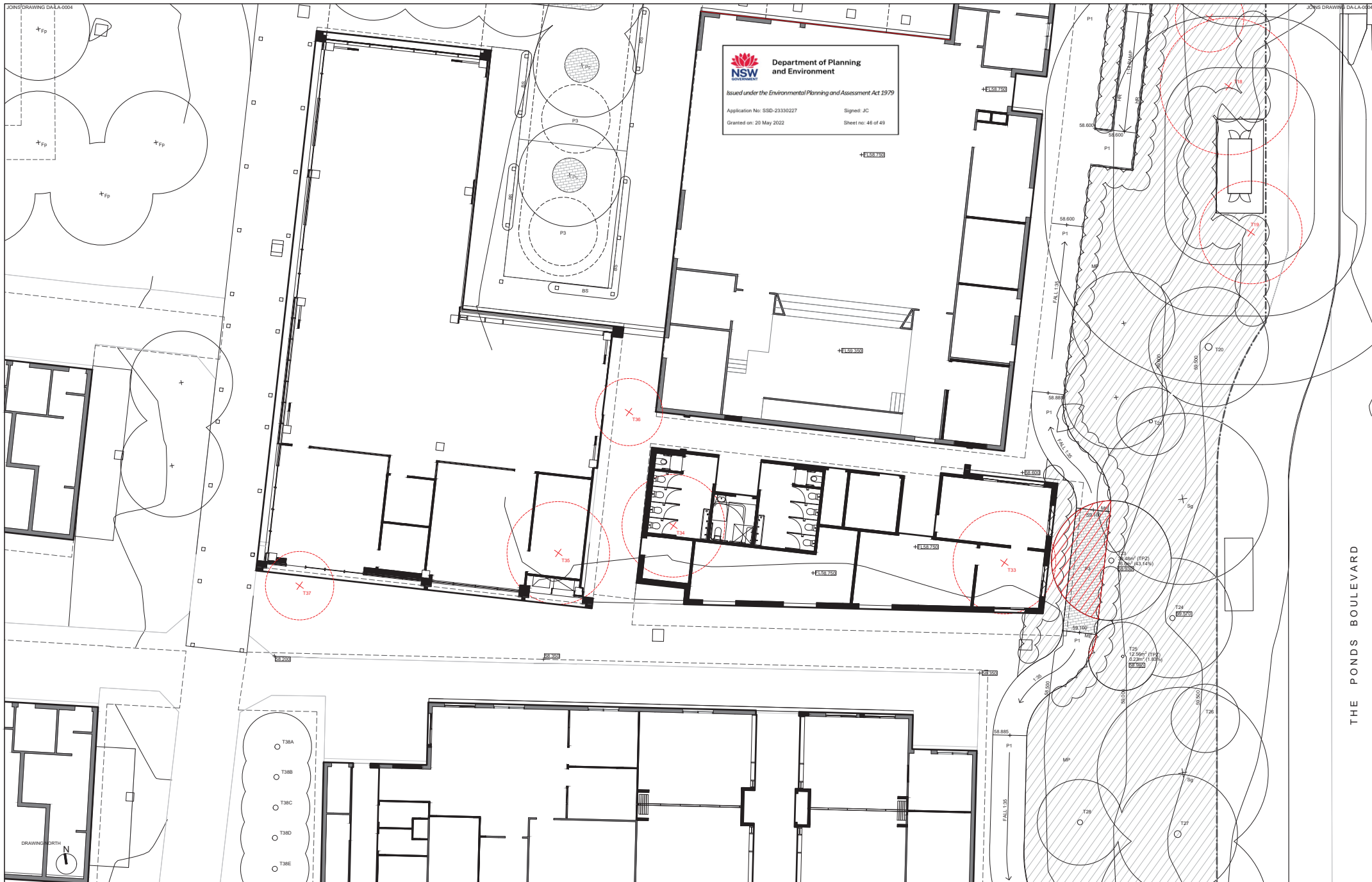
Project
John Palmer Public School
85 The Ponds Blvd, The Ponds NSW 2769



Status
RESPONSE TO SUBMISSION

Title
DETAIL LANDSCAPE PLAN
SHEET 3

Drawing Number
DA-LA-0004

Revision
B

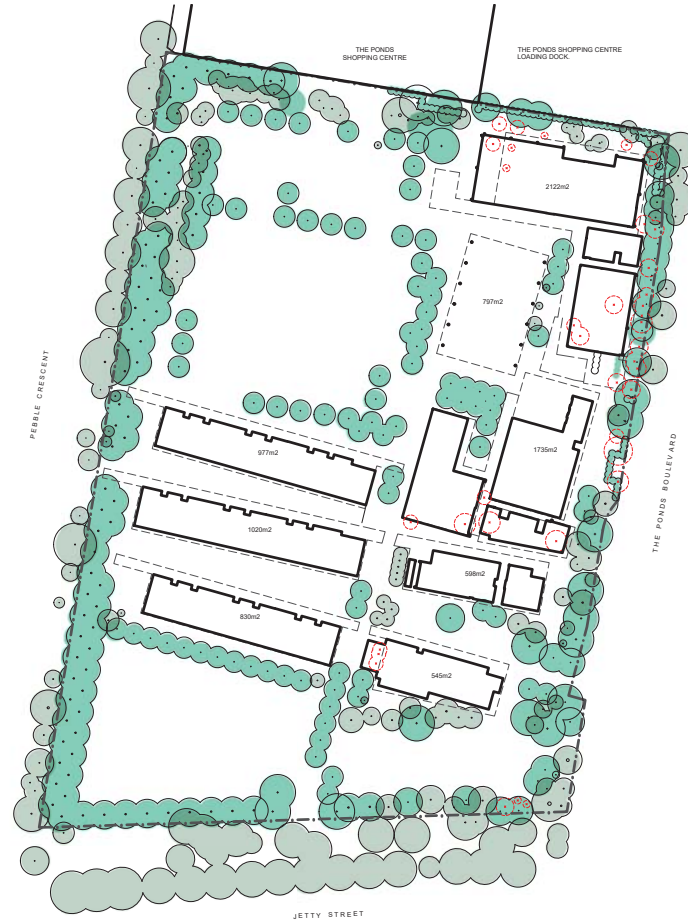


Key Plan:			Drawing Disclaimer:		Rev		Amendment		By		Chk		Date		Consultants		Client		Architect		Project		Drawing Number		Revision	
			Do not scale from drawings. Verify all dimensions on site before commencing work. Copying or reproduction of this drawing is strictly prohibited without the consent of PTW Architects		A		SSDA SUBMISSION		GM		GM		21/10/08		DHJ Diane H Jones NSW Arch 4778		Level 11, 88 Phillip Street Sydney NSW 2000 Australia T +61 2 9232 5877 ptw.com.au		PTW Architects		John Palmer Public School 85 The Ponds Blvd, The Ponds NSW 2769		DA-LA-0005		B	
				Note:																Status						
				PTW takes no responsibility for external building elements. Anything connected with any design, materials selection, construction or installation of any cladding, facade or external building element must be checked by and remains the responsibility of others, including suitably qualified experts as may be required.																RESPONSE TO SUBMISSION						
																				NSW Nominated Architects						
																				5 Parramatta Arch No 4098						
																				D Jones Arch No 4778						



CANOPY AREA CALCULATIONS
SITE AREA: 29,829m² EX TREE CANOPY COVER: 2,582m² (8.7%)
BUILDING AREA: 8,624m²

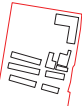
LEGEND
SITE BOUNDARY
EXISTING TREE TO BE RETAINED
EXISTING TREE TO BE REMOVED, REFER LANDSCAPE DRAWINGS



CANOPY AREA CALCULATIONS
SITE AREA: 29,829m² NEW TREE CANOPY COVER: 7,986m² (26.8%)
BUILDING AREA: 8,624m²

LEGEND
SITE BOUNDARY
EXISTING TREE TO BE RETAINED
EXISTING TREE TO BE REMOVED, REFER LANDSCAPE DRAWINGS
NEW TREE PLANTING

Key Plan:



Drawing Disclaimer:
Do not scale from drawings.
Verify all dimensions on site before commencing work.
Copying or reproduction of this drawing is strictly prohibited without the consent of PTW Architects.

Note:
PTW takes no responsibility for external building elements. Anything connected with any design, materials selection, construction or installation of any cladding, facade or external building element must be checked by and remains the responsibility of others, including suitably qualified experts as may be required.

Rev	Amendment	By	Chk	Date
A	SSDA SUBMISSION	GM	GM	21/10/08

***Registered Architect**
DHI Diane H Jones NSW Arch 4778

****Registered Landscape Architect**
GM Glenn McIlraith AILA

Consultants

Client



Education

Architect
PTW Architects
Level 11, 88 Phillip Street
Sydney NSW 2000 Australia
T +61 2 9232 5877
ptw.com.au

Peddie Thorp & Walker P/L NSW Nominated Architects
ABN 23 000 454 624 5 Parsons Architect No.6098
Trading as PTW Architects D Jones Architect No.4778



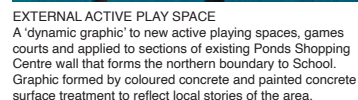
Project
John Palmer Public School
85 The Ponds Blvd, The Ponds NSW 2769

Status
SSDA SUBMISSION

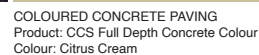
TREE CANOPY COVER

Drawing Number
DA-LA-0010

Revision
A



Product: Dulux, Roadmaster A1



Product: Surface Designs, Rosehill TPV

SANDSTONE BLOCK RETAINING WALL
AND ACTIVE PLAY INTERFACE
Product: Sandstone Block

PERMEABLE PAVING
Product: Pedestrian Paver HydroSTON 50

*Registered Architect		
DHI	Diane H Jones	NSW Arch 4778
**Registered Landscape Architect		
GM	Glenn McIntosh	AILA

Consultants

Client

 Education

Architect
PTW Architects
Level 11, 88 Phillip Street
Sydney NSW 2000 Australia
T +61 2 9232 5877
ptw.com.au

Peddie Thorp & Walker P/L
ABN 23 000 454 624
trading as PTW Architects

NSW Nominated Architects
S Parsons Architect No.6091
D Jones Architect No.4778

PTW	0	1	2	3	4	5	6	7	8	9	mm	Title
	NA	@	1									LANDSCAPE MATERIALS AND FINISHES
	Project											
	John Palmer Public School											
	85 The Ponds Blvd. The Ponds NSW 2769											
	Drawing Number											
	Revision											
	Status											
	SSDA SUBMISSION											
	DA-LA-0020											



Department of Planning
and Environment

Issued under the Environmental Planning and Assessment Act 1979

Application No: SSD-23330227

Signed: JC

Granted on: 20 May 2022

Sheet no: 49 of 49



Lophostemon confertus



Flindersia australis



Callistemon salignus



Lobelia hystrix



Crinum pedunculatum



Syncarpia glomulifera



Fraxinus pennsylvanica 'Omnisiam'



Melaleuca quinquenervia



Acmena smithii



Juncus usitatus



Dianella revoluta



Themeda australis

Key Plan:



Drawing Disclaimer:
Do not scale from drawings.
Verify all dimensions on site before commencing work.
Copying or reproduction of this drawing is strictly prohibited without the consent of PTW Architects.
Note:
PTW takes no responsibility for external building elements. Anything connected with any design, materials selection, construction or installation of any cladding, facade or external building element must be checked by and remains the responsibility of others, including suitably qualified experts as may be required.

Rev	Amendment	By	Chk**	Date
A	SSDA SUBMISSION	GM	GM	21/10/08
B	RESPONSE TO SUBMISSION	GM	GM	22/01/14

*Registered Architect			
DHJ	Diane H Jones	NSW Arch 4778	
**Registered Landscape Architect			
GM	Glenn McInnes	ALA	

Consultants

Client



Education

Architect
PTW Architects
Level 11, 88 Phillip Street
Sydney NSW 2000 Australia
T +61 2 9232 5877
ptw.com.au

Peddie Thorp & Walker P/L
ABN 23 000 454 624
Trading as PTW Architects
NSW Nominated Architects
S Parsons Architect No.6098
D Jones Architect No.4778



Project	
John Palmer Public School 85 The Ponds Blvd, The Ponds NSW 2769	
Status	
RESPONSE TO SUBMISSION	

Title	
LANDSCAPE PLANTING	
Drawing Number	
DA-LA-0021	
Revision	
B	