



1 NEW BUILDING - EAST ELEVATION
1 : 200 @A1



2 NEW BUILDING - NORTH ELEVATION
1 : 200 @A1

Key Plan:



Drawing Disclaimer:

Do not scale from drawings.
Verify all dimensions on site before commencing work.
Copying or reproduction of this drawing is strictly
prohibited without the consent of PTW Architects

Note:

PTW takes no responsibility for external building
elements. Anything connected with any design, materials
selection, construction or installation of any cladding,
facade or external building element must be checked by
and remains the responsibility of others, including
suitably qualified experts as may be required.

| Rev | Amendment | By | Chk* | Date |
|-----|-----------------------|----|------|--------|
| B | SSDA SUBMISSION | QF | DJ | 211008 |
| A | DRAFT SSDA SUBMISSION | QF | DJ | 210924 |

| *Registered Architect |
|---------------------------------|
| DHI Diane H Jones NSW Arch 4778 |

Consultants

Client



Issued under the Environmental Planning and Assessment Act 1979

Application No: SSD-23330227

Signed: JC

Granted on: 20 May 2022

Sheet no: 33 of 49



Drawing Disclaimer:
Do not scale from this drawing.

Do not scale from drawings.
Verify all dimensions on site before commencing work.
Copying or reproduction of this drawing is strictly
prohibited without the consent of PTW Architects

Note

PTW takes no responsibility for external building elements. Anything connected with any design, materials selection, construction or installation of any cladding, facade or external building element must be checked by and remains the responsibility of others, including suitably qualified experts as may be required.

| Rev | Amendment | By | Chk* | Date |
|-----|-----------------|----|------|--------|
| B | SSDA SUBMISSION | QF | DJ | 211008 |

| | | |
|-----------------------|---------------|---------------|
| *Registered Architect | | |
| DHJ | Diane H Jones | NSW Arch 4778 |

Consultants

Client



Education

Architect
PTW Architects
Level 11, 88 Phillip Street
Sydney NSW 2000 Australia
T +61 2 9232 5877
ptw.com.au

Peddie Thorp & Walker P/L
ABN 23 000 454 624
trading as PTW Architects

0 1 2 5
1 : 200 @ A1

Project PA030470

John Palmer Public School
85 The Ponds Blvd, The Ponds NSW 2769

Status
SSDA SUBMISSION

| Title |
|-------|
| SSDA |

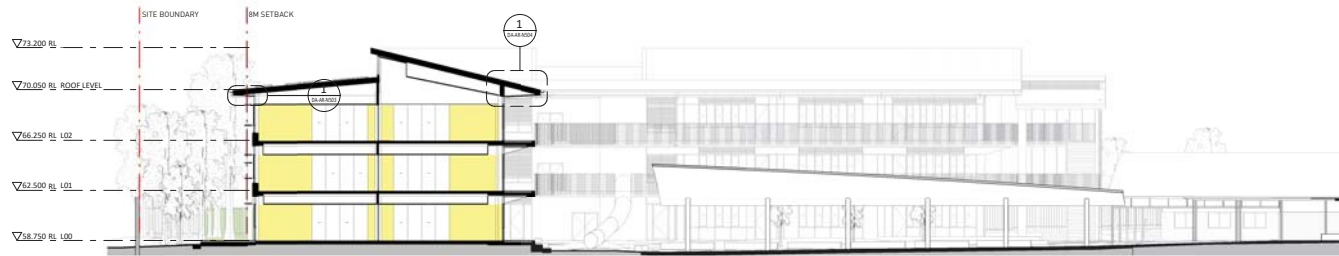
— SECTIONS - SHEET 1

Drawing Number
DA-AR-N301

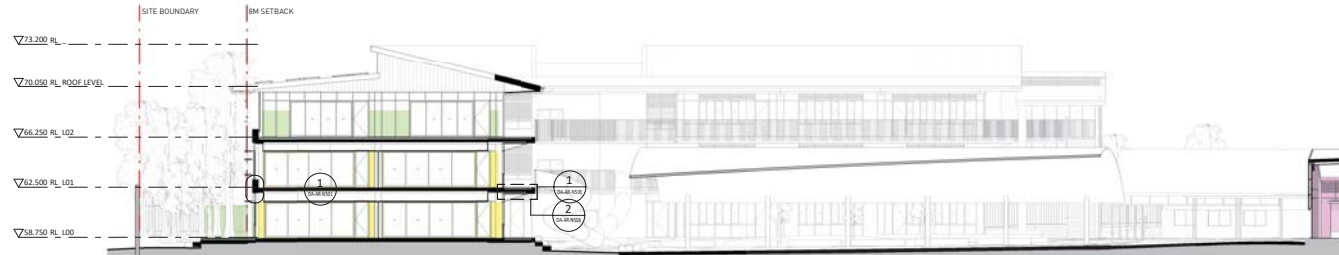
B



4 SECTION 4
1 : 200 @ A1



5 SECTION 5
1 : 200 @ A1



6 SECTION 6
1 : 200 @ A1



Department of Planning
and Environment

Issued under the Environmental Planning and Assessment Act 1979

Application No: SSD-23330227

Signed: JC

Granted on: 20 May 2022

Sheet no: 34 of 49

Key Plan:



Drawing Disclaimer:

Do not scale from drawings.
Verify all dimensions on site before commencing work.
Copying or reproduction of this drawing is strictly
prohibited without the consent of PTW Architects

Note

PTW takes no responsibility for external building
elements. Anything connected with any design, materials
selection, construction or installation of any cladding,
facade or external building element must be checked by
and remains the responsibility of others, including
suitably qualified experts as may be required.

| Rev | Amendment | By | Chk* | Date |
|-----|-----------------------|----|------|--------|
| B | SSDA SUBMISSION | QF | DJ | 211008 |
| A | DRAFT SSDA SUBMISSION | QF | DJ | 210924 |

| *Registered Architect |
|---------------------------------|
| DHJ Diane H Jones NSW Arch 4778 |

Consultants

Client



Education

Architect
PTW Architects
Level 11, 88 Phillip Street
Sydney NSW 2000 Australia
T +61 2 9232 5877
ptw.com.au

Peddie Thorp & Walker P/L
ABN 23 000 454 624
Trading as PTW Architects
NSW Nominated Architects
5 Parramatta Architects No 6098
D Jones Architect No 4778



1 : 200 @ A1

Project PA030470

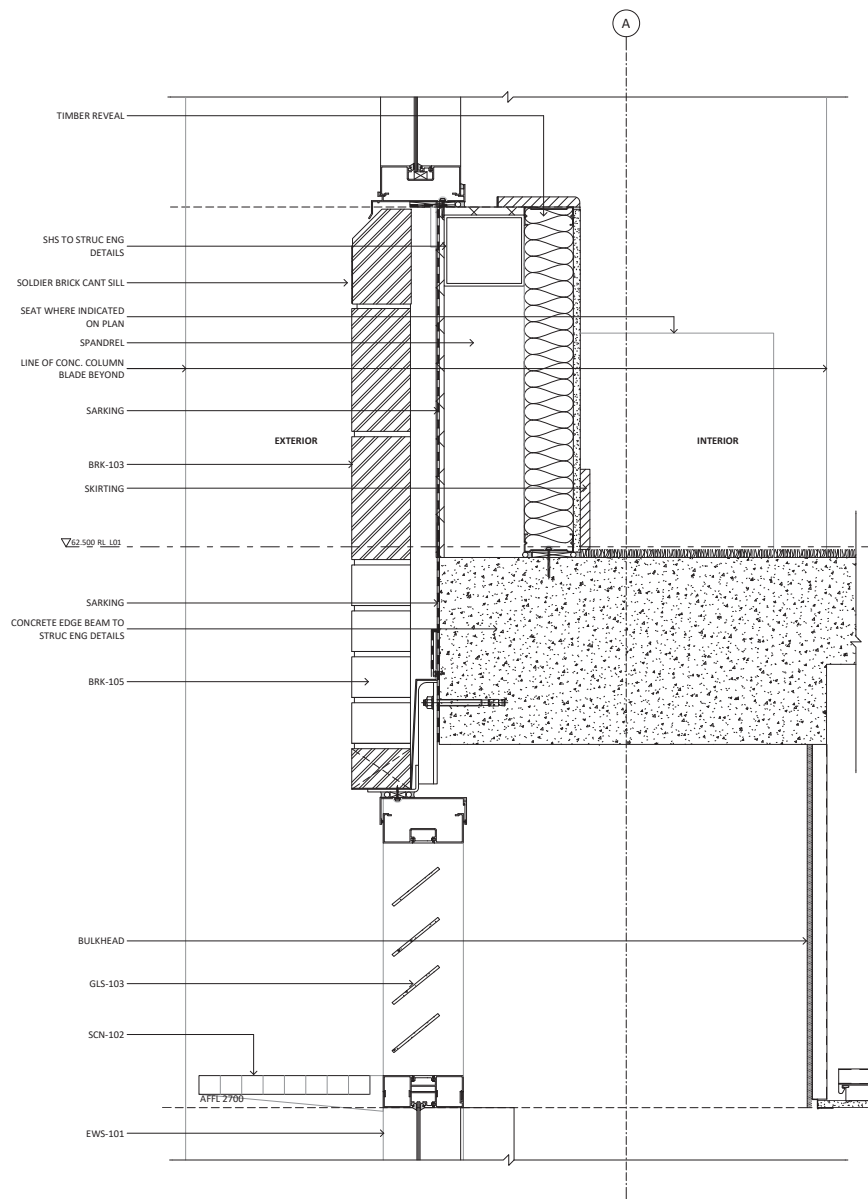
John Palmer Public School
85 The Ponds Blvd, The Ponds NSW 2769

Status
SSDA SUBMISSION

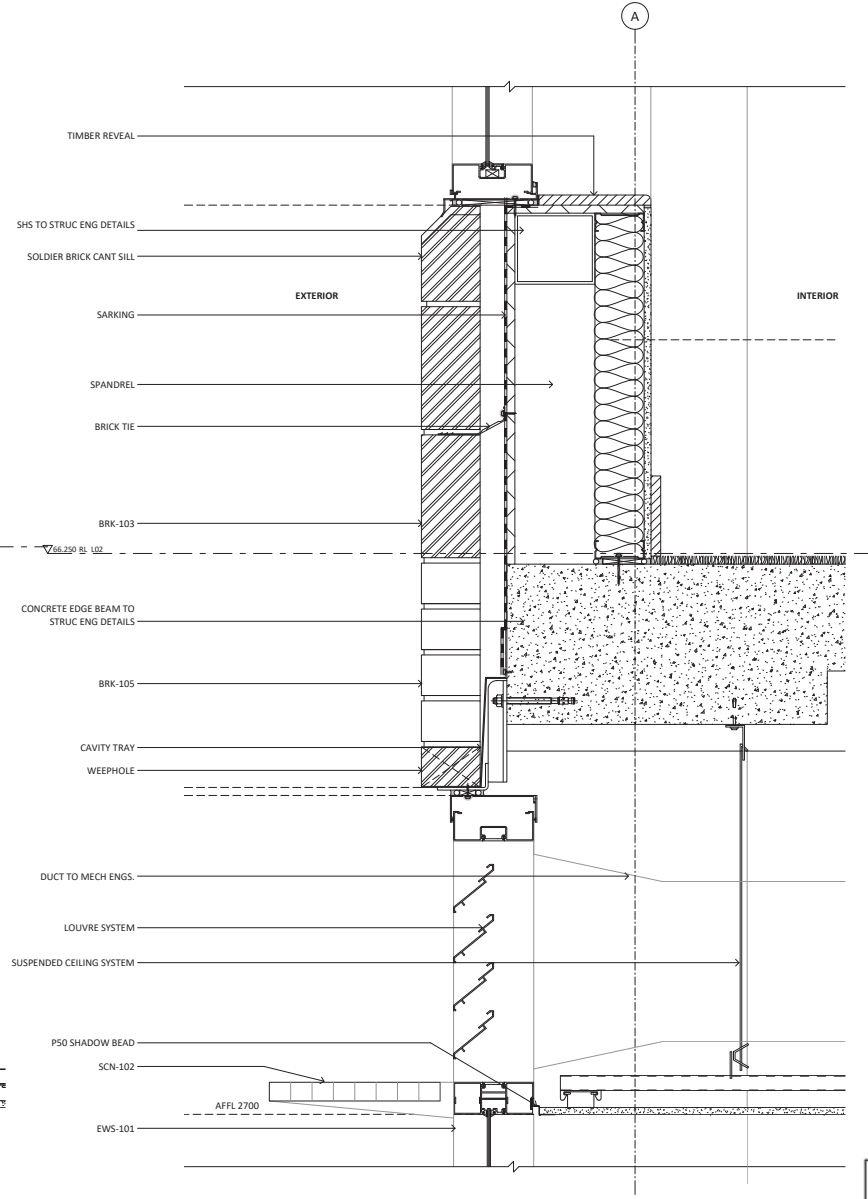
Title
SSDA
SECTIONS - SHEET 2

Drawing Number
DA-AR-N302

Revision
B



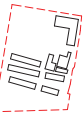
1 Section Detail Typical Spandrel Glass Louvres
1:5 @A1



2 Section Detail Typical Spandrel Mech Duct
1:5 @A1

NSW Department of Planning and Environment
Issued under the Environmental Planning and Assessment Act 1979
Application No: 550-23330227 Signed: JC
Granted on: 20 May 2022 Sheet no: 35 of 48

Key Plan:



Drawing Disclaimer:
Do not scale from drawings.
Verify all dimensions on site before commencing work.
Copying or reproduction of this drawing is strictly prohibited without the consent of PTW Architects.
Note
PTW takes no responsibility for external building elements. Anything connected with any design, materials selection, construction or installation of any cladding, facade or external building element must be checked by and remains the responsibility of others, including suitably qualified experts as may be required.

| Rev | Amendment | By | Chk* | Date |
|-----|-----------------------|----|------|----------|
| B | SSDA SUBMISSION | OF | DJ | 21/10/20 |
| A | DRAFT SSDA SUBMISSION | OF | DJ | 21/09/24 |

Registered Architect
DHI Diane H Jones NSW Arch 4778

Consultants

Client



Education

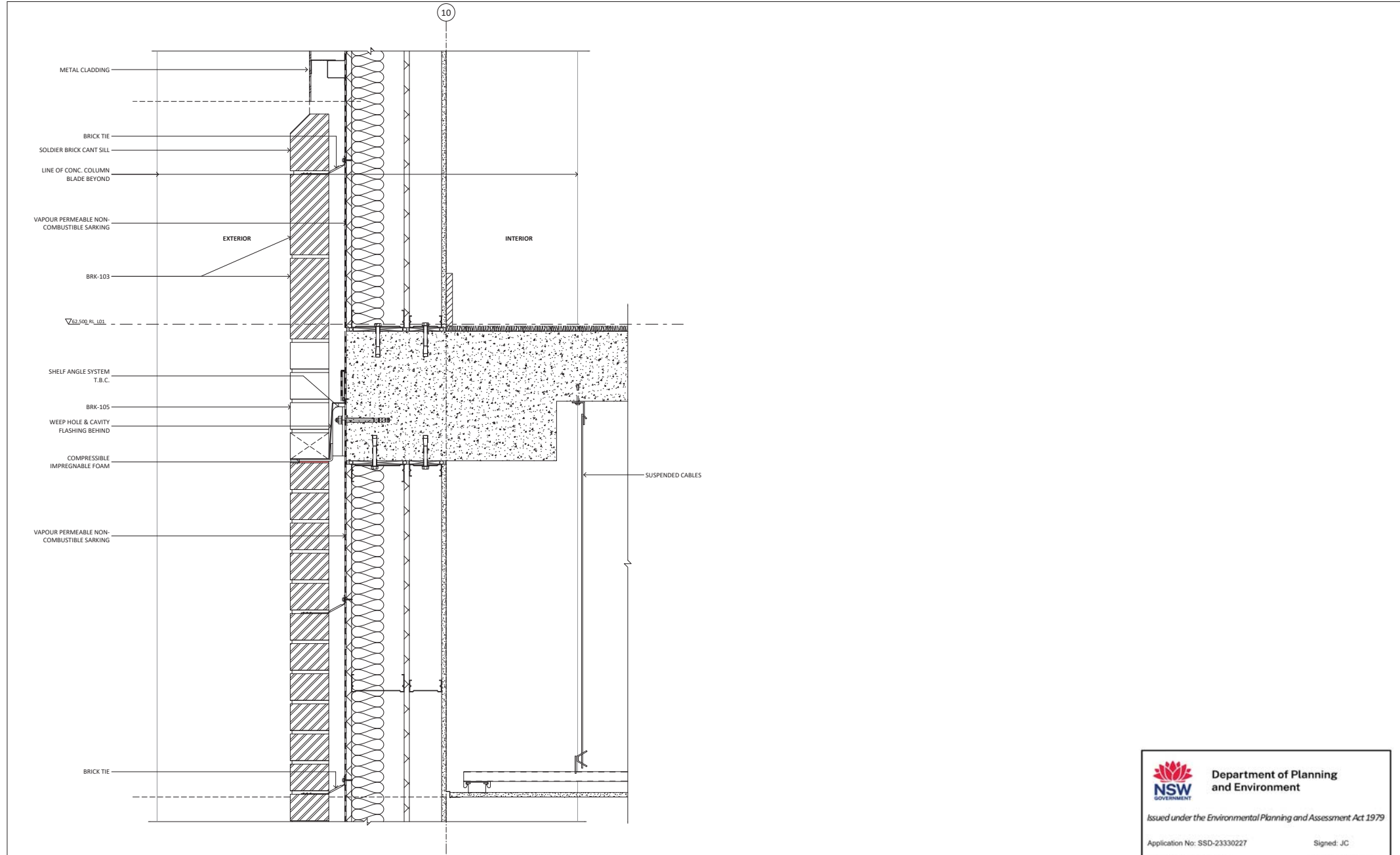
Architect
PTW Architects
Level 11, 88 Phillip Street
Sydney NSW 2000 Australia
T +61 2 9232 5877
ptw.com.au

Peddie Thorp & Walker P/L NSW Nominated Architects
ABN 23 000 454 624 5 Parsons Architects No 6098
Trading as PTW Architects D Jones Architect No 4778



0 50 100 200 350mm
1:5 @ A1
Project PA030470
John Palmer Public School
85 The Ponds Blvd, The Ponds NSW 2769
Status
SSDA SUBMISSION

Title
SSDA
FACADE SECTIONS - SHEET 1
Drawing Number
DA-AR-N501
Revision
B



1 BRICK FACADE DETAIL
1:5 @A1

Key Plan:

Drawing Disclaimer:

Do not scale from drawings.
Verify all dimensions on site before commencing work.
Copying or reproduction of this drawing is strictly prohibited without the consent of PTW Architects

Note

PTW takes no responsibility for external building elements. Anything connected with any design, materials selection, construction or installation of any cladding, facade or external building element must be checked by and remains the responsibility of others, including suitably qualified experts as may be required.

| Rev | Amendment | By | Chk* | Date | *Registered Architect | Consultants | Client |
|-----|-----------------------|----|------|--------|---------------------------------|-------------|--------|
| B | SSDA SUBMISSION | OF | DJ | 211008 | DHJ Diane H Jones NSW Arch 4778 | | |
| A | DRAFT SSDA SUBMISSION | OF | DJ | 210924 | | | |

Architect

PTW Architects
Level 11, 88 Phillip Street
Sydney NSW 2000 Australia
T +61 2 9232 5877
ptw.com.au

Peddle Thorp & Walker P/L
ABN 23 000 454 624
Trading as PTW Architects

NSW Nominated Architects
5 Parsons Architects No 6098
D Jones Architect No 4778

0 50 100 200 400mm

1:5 @ A1

Project PA030470

John Palmer Public School
85 The Ponds Blvd, The Ponds NSW 2769

Status
SSDA SUBMISSION

Title
SSDA

FACADE SECTIONS - SHEET 2

Drawing Number
DA-AR-N502

Revision
B

NSW GOVERNMENT

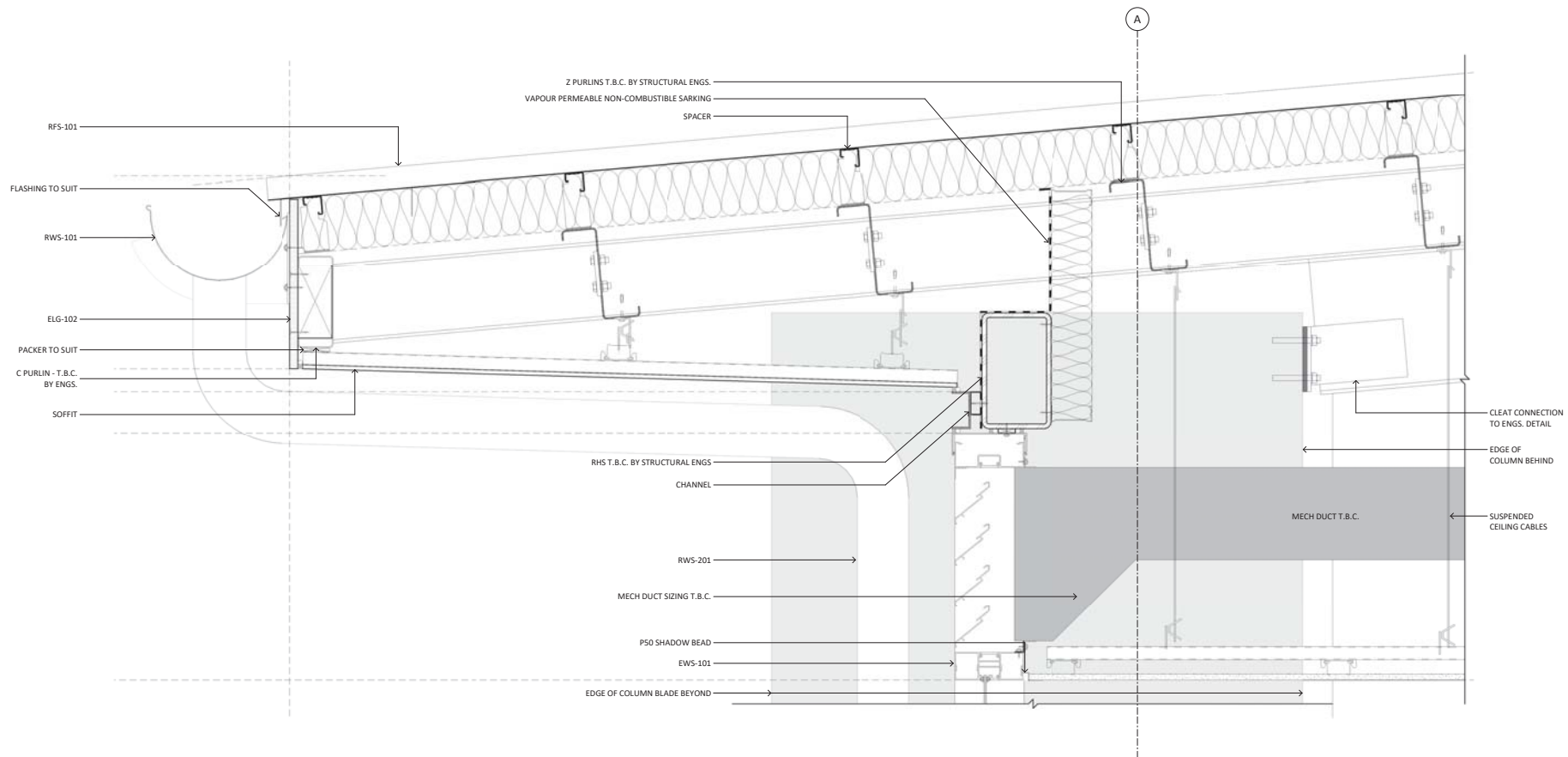
Education

Department of Planning and Environment

Issued under the Environmental Planning and Assessment Act 1979

Application No: SSD-23330227 Signed: JC

Granted on: 20 May 2022 Sheet no: 36 of 49



1 Section Detail_Roof Eaves_External
1 : 5 @A1



Department of Planning
and Environment

Issued under the Environmental Planning and Assessment Act 1979

Application No: SSD-23330227

Signed: JC

Granted on: 20 May 2022

Sheet no: 37 of 49

Key Plan:



Drawing Disclaimer:

Do not scale from drawings.
Verify all dimensions on site before commencing work.
Copying or reproduction of this drawing is strictly
prohibited without the consent of PTW Architects

Note

PTW takes no responsibility for external building
elements. Anything connected with any design, materials
selection, construction or installation of any cladding,
facade or external building element must be checked by
and remains the responsibility of others, including
suitably qualified experts as may be required.

| Rev | Amendment | By | Chk* | Date |
|-----|-----------------------|----|------|--------|
| B | SSDA SUBMISSION | OF | DJ | 211008 |
| A | DRAFT SSDA SUBMISSION | OF | DJ | 210924 |

| *Registered Architect |
|---------------------------------|
| DHI Diane H Jones NSW Arch 4778 |

Consultants

Client



Education

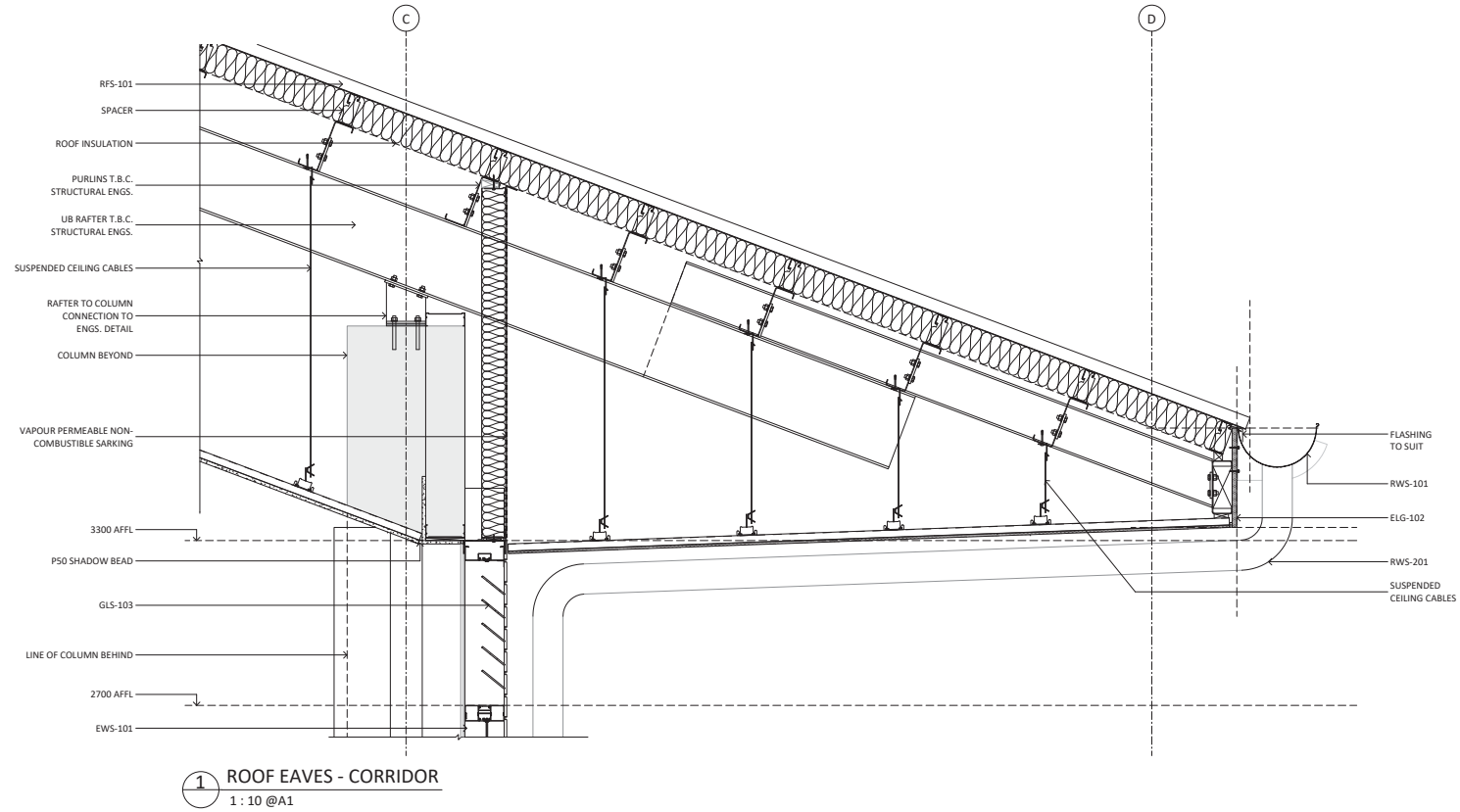
Architect
PTW Architects
Level 11, 88 Phillip Street
Sydney NSW 2000 Australia
T +61 2 9232 5877
ptw.com.au

Peddie Thorp & Walker P/L
ABN 23 000 454 624
Trading as PTW Architects
NSW Nominated Architects
5 Parsons Architects No 6098
D Jones Architect No 4778

PTW

Project PA030470
John Palmer Public School
85 The Ponds Blvd, The Ponds NSW 2769
Status
SSDA SUBMISSION

Title
SSDA
FACADE SECTIONS - SHEET 3
Drawing Number
DA-AR-N503
Revision
B



NSW GOVERNMENT

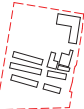
Department of Planning and Environment

Issued under the Environmental Planning and Assessment Act 1979

Application No: SSD-23330227 Signed: JG

Granted on: 20 May 2022 Sheet no: 38 of 49

Key Plan:



Drawing Disclaimer:
Do not scale from drawings.
Verify all dimensions on site before commencing work.
Copying or reproduction of this drawing is strictly prohibited without the consent of PTW Architects

Note
PTW takes no responsibility for external building elements. Anything connected with any design, materials selection, construction or installation of any cladding, facade or external building element must be checked by and remains the responsibility of others, including suitably qualified experts as may be required.

| Rev | Amendment | By | Chk* | Date |
|-----|-----------------------|----|------|------------|
| B | SSDA SUBMISSION | QF | DJ | 21/10/2021 |
| A | DRAFT SSDA SUBMISSION | QF | DJ | 21/09/24 |

| *Registered Architect |
|---------------------------------|
| DHJ Diane H Jones NSW Arch 4778 |

Consultants

Client



Education

Architect
PTW Architects
Level 11, 88 Phillip Street
Sydney NSW 2000 Australia
T +61 2 9232 5877
ptw.com.au

Peddie Thorp & Walker P/L NSW Nominated Architects
ABN 23 000 454 624 S Parsons Architects No 6098
Trading as PTW Architects D Jones Architect No 4778

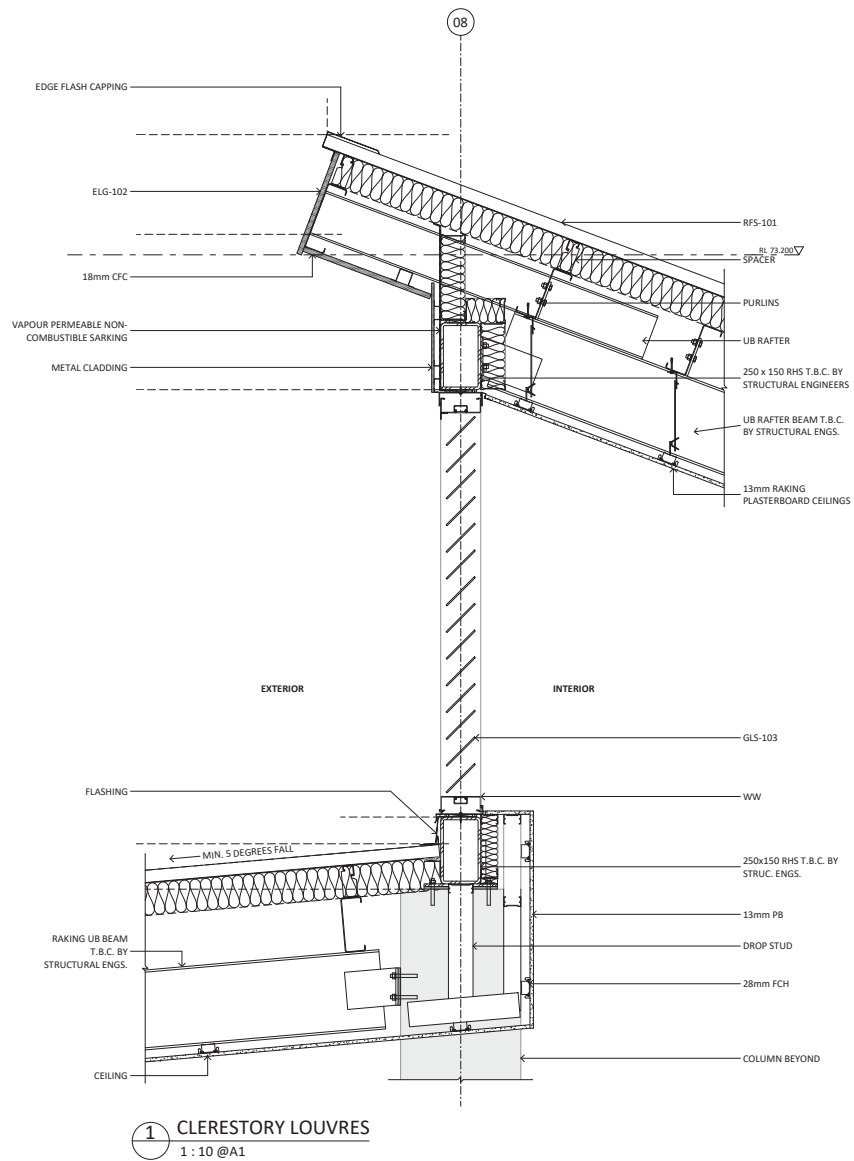


0 0.1 0.2 0.5 1.0m
1:10 @ A1

Project PA030470
John Palmer Public School
85 The Ponds Blvd, The Ponds NSW 2769

Status
SSDA SUBMISSION

| Title | Drawing Number | Revision |
|---------------------------|----------------|----------|
| SSDA | DA-AR-N504 | B |
| FACADE SECTIONS - SHEET 4 | | |



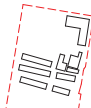
Department of Planning and Environment

Issued under the Environmental Planning and Assessment Act 1979

Application No: SSD-23330227 Signed: JC

Granted on: 20 May 2022 Sheet no: 39 of 49

Key Plan:



Drawing Disclaimer:
Do not scale from drawings.
Verify all dimensions on site before commencing work.
Copying or reproduction of this drawing is strictly prohibited without the consent of PTW Architects

Note
PTW takes no responsibility for external building elements. Anything connected with any design, materials selection, construction or installation of any cladding, facade or external building element must be checked by and remains the responsibility of others, including suitably qualified experts as may be required.

| Rev | Amendment | By | Chk* | Date | *Registered Architect |
|-----|-----------------------|----|------|--------|---------------------------------|
| B | SSDA SUBMISSION | QF | DJ | 211008 | DHJ Diane H Jones NSW Arch 4778 |
| A | DRAFT SSDA SUBMISSION | QF | DJ | 210924 | |

Consultants

Client



Education

Architect
PTW Architects
Level 11, 88 Phillip Street
Sydney NSW 2000 Australia
T +61 2 9232 5877
ptw.com.au

Peddle Thorp & Walker P/L
ABN 23 000 454 624
Trading as PTW Architects

NSW Nominated Architects
5 Parsons Architect No 6098
D Jones Architect No 4778



0.1 0.2 0.5 8.0m
1:10 @ A1

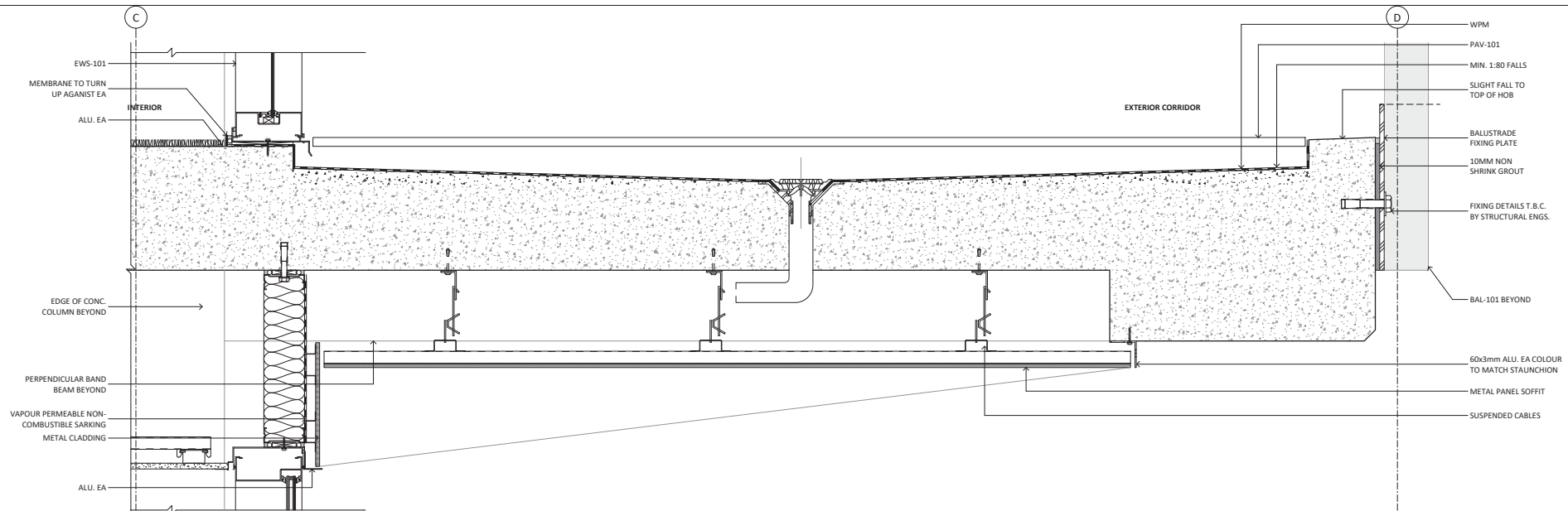
Project PA030470
John Palmer Public School
85 The Ponds Blvd, The Ponds NSW 2769

Status
SSDA SUBMISSION

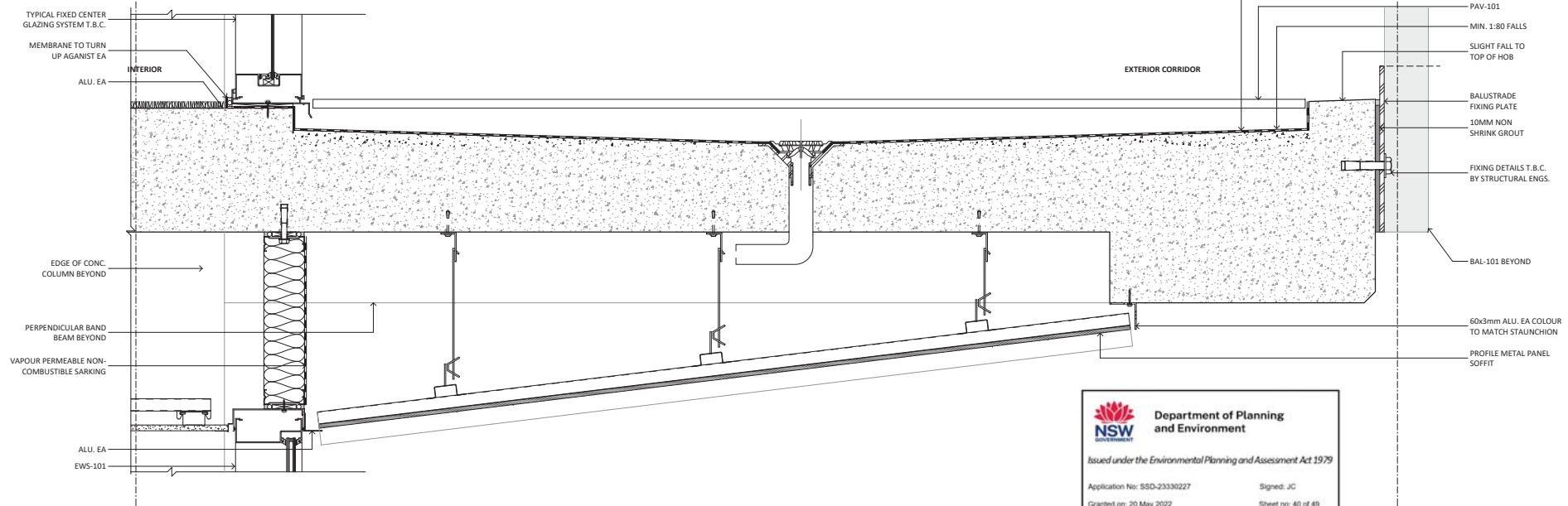
Title
SSDA
FACADE SECTIONS - SHEET 5

Drawing Number
DA-AR-N505

Revision
B



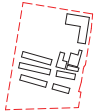
1 EXTERNAL CORRIDOR FLAT
1:5 @A1



2 EXTERNAL CORRIDOR RAKED
1:5 @A1



Key Plan:



Drawing Disclaimer:

Do not scale from drawings.
Verify all dimensions on site before commencing work.
Copying or reproduction of this drawing is strictly prohibited without the consent of PTW Architects

Note

PTW takes no responsibility for external building elements. Anything connected with any design, materials selection, construction or installation of any cladding, facade or external building element must be checked by and remains the responsibility of others, including suitably qualified experts as may be required.

| Rev | Amendment | By | Chk* | Date |
|-----|-----------------------|----|------|----------|
| B | SSDA SUBMISSION | QF | DJ | 21/10/23 |
| A | DRAFT SSDA SUBMISSION | QF | DJ | 21/09/24 |

| *Registered Architect |
|---------------------------------|
| DHJ Diane H Jones NSW Arch 4778 |

Consultants

Client



Education

Architect
PTW Architects
Level 11, 88 Phillip Street
Sydney NSW 2000 Australia
T +61 2 9232 5877
ptw.com.au

Peddie Thorp & Walker P/L
ABN 23 000 454 624
Trading as PTW Architects
D Jones Architect No 4778

NSW Nominated Architects
S Parsons Architects No 6098
D Jones Architect No 4778

PTW

0 50 100 200 300mm
1:5 @ A1

Project PA030470
John Palmer Public School
85 The Ponds Blvd, The Ponds NSW 2769

Status
SSDA SUBMISSION

Title
SSDA
FACADE SECTIONS - SHEET 6

Drawing Number
DA-AR-N506

Revision
B