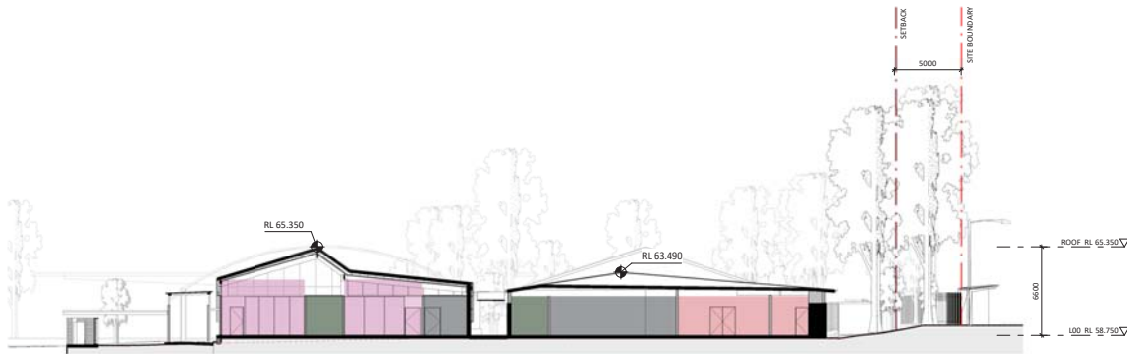




1 SECTION 1  
1 : 200 @ A1



2 SECTION 2  
1 : 200 @ A1

**NSW GOVERNMENT**

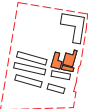
**Department of Planning and Environment**

*Issued under the Environmental Planning and Assessment Act 1979*

Application No: SSD-23330227      Signed: JC

Granted on: 20 May 2022      Sheet no: 21 of 49

Key Plan:



**Drawing Disclaimer:**  
Do not scale from drawings.  
Verify all dimensions on site before commencing work.  
Copying or reproduction of this drawing is strictly prohibited without the consent of PTW Architects.

**Note**  
PTW takes no responsibility for external building elements. Anything connected with any design, materials selection, construction or installation of any cladding, facade or external building element must be checked by and remains the responsibility of others, including suitably qualified experts as may be required.

Rev	Amendment	By	Chk*	Date
B	SSDA SUBMISSION	MB	DJ	21/10/26
A	DRAFT SSDA SUBMISSION	MB	DJ	21/09/24

*Registered Architect
DHJ Diane H Jones NSW Arch 4778

Consultants

Client



**Education**

**Architect**  
PTW Architects  
Level 11, 88 Phillip Street  
Sydney NSW 2000 Australia  
T +61 2 9232 5877  
[ptw.com.au](http://ptw.com.au)

Peddie Thorp & Walker P/L NSW Nominated Architects  
ABN 23 000 454 624 5 Parsons Architects No 6098  
Trading as PTW Architects D Jones Architect No 4778



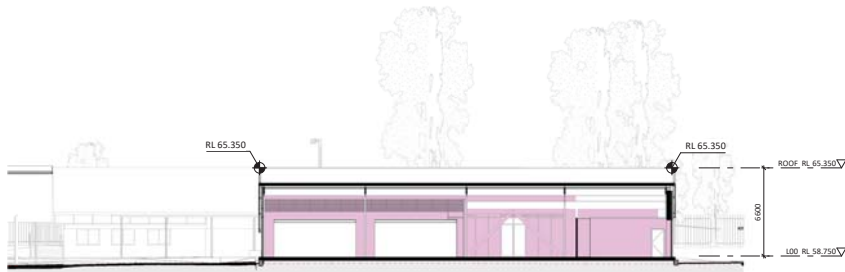
0 1 2 3 4 5 6 7 8 9 10 11m

1 : 200 @ A1

**Project** PA030470  
**John Palmer Public School**  
85 The Ponds Blvd, The Ponds NSW 2769

**Status**  
SSDA SUBMISSION

Title	Drawing Number	Revision
SSDA	DA-AR-B301	B
<b>BUILDING B - SECTIONS</b>		



1 SECTION 3  
1 : 200 @A1

----- EXISTING GROUND LEVELS



2 SECTION 4  
1 : 200 @A1

----- EXISTING GROUND LEVELS



Department of Planning  
and Environment

Issued under the Environmental Planning and Assessment Act 1979

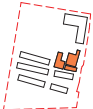
Application No: SSD-23330227

Signed: JC

Granted on: 20 May 2022

Sheet no: 22 of 49

Key Plan:



Drawing Disclaimer:

Do not scale from drawings.  
Verify all dimensions on site before commencing work.  
Copying or reproduction of this drawing is strictly  
prohibited without the consent of PTW Architects

Note

PTW takes no responsibility for external building  
elements. Anything connected with any design, materials  
selection, construction or installation of any cladding,  
facade or external building element must be checked by  
and remains the responsibility of others, including  
suitably qualified experts as may be required.

Rev	Amendment	By	Chk*	Date
B	SSDA SUBMISSION	MB	DJ	211006
A	DRAFT SSDA SUBMISSION	MB	DJ	210924

*Registered Architect
DHJ Diane H Jones NSW Arch 4778

Consultants

Client



Education

Architect  
PTW Architects  
Level 11, 88 Phillip Street  
Sydney NSW 2000 Australia  
T +61 2 9232 5877  
[ptw.com.au](http://ptw.com.au)

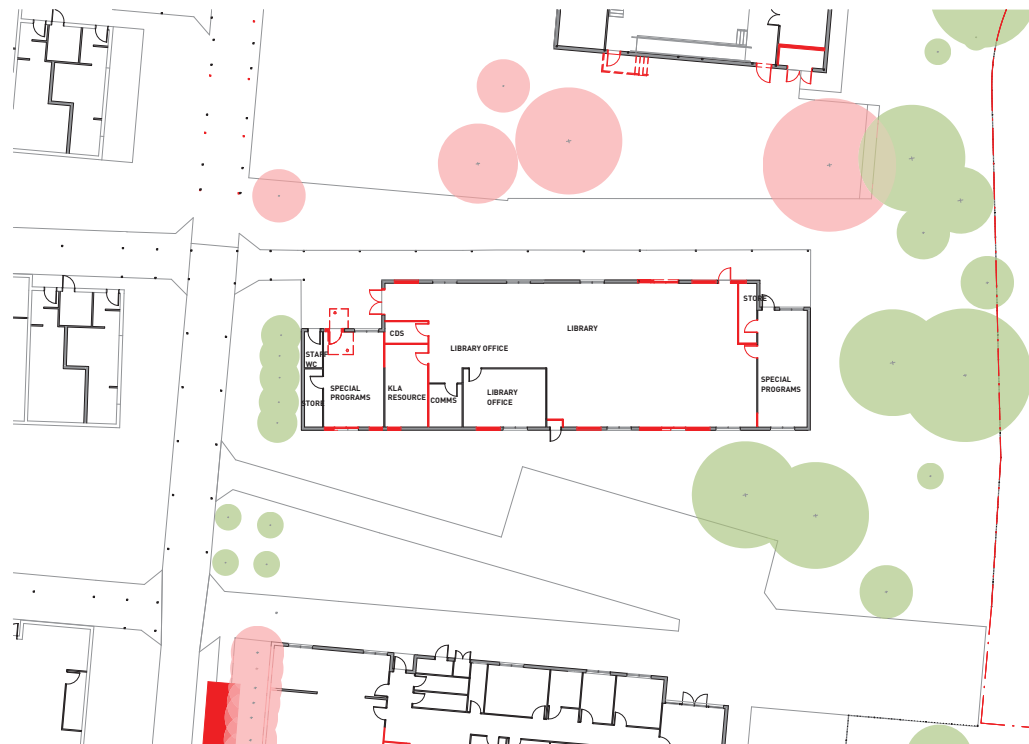
Peddie Thorp & Walker P/L NSW Nominated Architects  
ABN 23 000 454 624 5 Parsons Architects No 6098  
Trading as PTW Architects D Jones Architect No 4778

PTW

0 1 2 5 10 15m  
1 : 200 @ A1  
Project PA030470  
John Palmer Public School  
85 The Ponds Blvd, The Ponds NSW 2769  
Status  
SSDA SUBMISSION

Title  
SSDA  
BUILDING B - SECTIONS

Drawing Number  
DA-AR-B302  
Revision  
B



- Demolished roof
- Demolished wall
- Removed tree

**1 LEVEL 00 - DEMO PLAN**  
1 : 200 @A1

**Department of Planning and Environment**

*Issued under the Environmental Planning and Assessment Act 1979*

Application No: SSD-23330227      Signed: JC

Granted on: 20 May 2022      Sheet no: 23 of 49

Key Plan:



**Drawing Disclaimer:**  
Do not scale from drawings.  
Verify all dimensions on site before commencing work.  
Copying or reproduction of this drawing is strictly prohibited without the consent of PTW Architects

**Note:**  
PTW takes no responsibility for external building elements. Anything connected with any design, materials selection, construction or installation of any cladding, facade or external building element must be checked by and remains the responsibility of others, including suitably qualified experts as may be required.

Rev	Amendment	By	Chk*	Date
B	SSDA SUBMISSION	MB	DJ	211008
A	DRAFT SSDA SUBMISSION	MB	DJ	210924

*Registered Architect
DHI Diane H Jones NSW Arch 4778

Consultants

Client



**Architect**  
PTW Architects  
Level 11, 88 Phillip Street  
Sydney NSW 2000 Australia  
T +61 2 9232 5877  
[ptw.com.au](http://ptw.com.au)

Peddie Thorp & Walker P/L  
ABN 23 000 454 624  
Trading as PTW Architects

NSW Nominated Architects  
S Parsons Architect No 6098  
D Jones Architect No 4778



0 1 2 5 10 15m  
1 : 200 @ A1

Project PA030470  
**John Palmer Public School**  
85 The Ponds Blvd, The Ponds NSW 2769

Status  
SSDA SUBMISSION

Title	Revision
SSDA <b>BUILDING D - DEMO PLAN - LEVEL 00</b>	
Drawing Number <b>DA-AR-D102</b>	B



- LEGEND**
- ADMIN
  - ADMIN-EX
  - COMMUNAL HALL-EX
  - LIBRARY
  - OSCH
  - SPECIAL PROGRAMS
  - STAFF
  - STAFF-EX
  - STAFF AMENITIES
  - STAFF AMENITIES-EX
  - STORAGE / SERVICES / COMMS
  - STORAGE / SERVICES / COMMS-EX
  - STUDENT AMENITIES
  - STUDENT AMENITIES-EX

- LEGEND**
- Existing tree
  - Removed tree

**1 LEVEL 00 - GA**  
1 : 200 @A1

**NSW GOVERNMENT**

**Department of Planning and Environment**

*Issued under the Environmental Planning and Assessment Act 1979*

Application No: SSD-23330227 Signed: JC

Granted on: 20 May 2022 Sheet no: 24 of 49

Key Plan:



**Drawing Disclaimer:**  
Do not scale from drawings.  
Verify all dimensions on site before commencing work.  
Copying or reproduction of this drawing is strictly prohibited without the consent of PTW Architects

**Note**  
PTW takes no responsibility for external building elements. Anything connected with any design, materials selection, construction or installation of any cladding, facade or external building element must be checked by and remains the responsibility of others, including suitably qualified experts as may be required.

Rev	Amendment	By	Chk*	Date
B	SSDA SUBMISSION	MB	DJ	21.10.08
A	DRAFT SSDA SUBMISSION	MB	DJ	21.09.24

*Registered Architect	Client
DHJ Diane H Jones NSW Arch 478	

Consultants	Client



**Education**

**Architect**  
PTW Architects  
Level 11, 88 Phillip Street  
Sydney NSW 2000 Australia  
T +61 2 9232 5877  
[ptw.com.au](http://ptw.com.au)



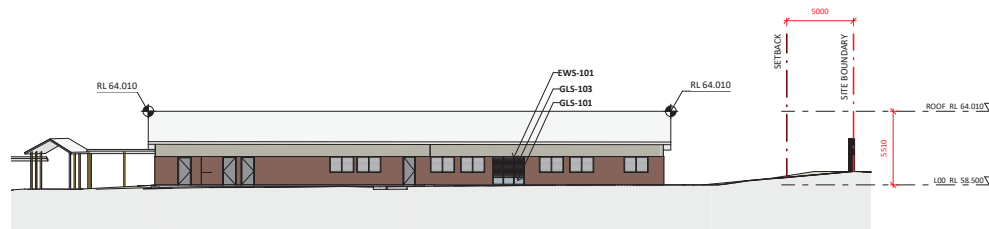
**John Palmer Public School**  
85 The Ponds Blvd, The Ponds NSW 2769

**SSDA SUBMISSION**

Title	Drawing Number	Revision
SSDA BUILDING D - LEVEL 00	DA-AR-D103	B



1 BUILDING D - NORTH ELEVATION  
1 : 200 @ A1



2 BUILDING D - SOUTH ELEVATION  
1 : 200 @ A1

**Department of Planning and Environment**

*Issued under the Environmental Planning and Assessment Act 1979*

Application No: SSD-23330227      Signed: JC

Granted on: 20 May 2022      Sheet no: 25 of 49

Key Plan:



**Drawing Disclaimer:**  
Do not scale from drawings.  
Verify all dimensions on site before commencing work.  
Copying or reproduction of this drawing is strictly prohibited without the consent of PTW Architects

**Note**  
PTW takes no responsibility for external building elements. Anything connected with any design, materials selection, construction or installation of any cladding, facade or external building element must be checked by and remains the responsibility of others, including suitably qualified experts as may be required.

Rev	Amendment	By	Chk*	Date	*Registered Architect
A	SSDA SUBMISSION	MB	DJ	21/10/20	DHJ Diane H Jones NSW Arch 4778

Consultants

Client



Education

**Architect**  
PTW Architects  
Level 11, 88 Phillip Street  
Sydney NSW 2000 Australia  
T +61 2 9232 5877  
[ptw.com.au](http://ptw.com.au)

Peddie Thorp & Walker P/L NSW Nominated Architects  
ABN 23 000 454 624  
Trading as PTW Architects  
S Parsons Architects No 6098  
D Jones Architect No 4778

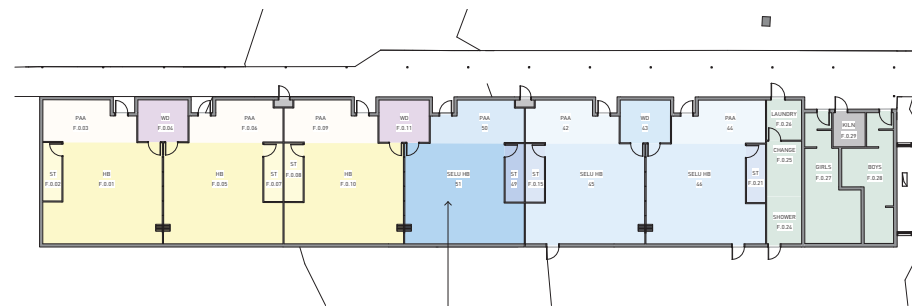


Project: PA030470  
**John Palmer Public School**  
85 The Ponds Blvd, The Ponds NSW 2769

Status:  
SSDA SUBMISSION

Title:  
SSDA  
**BUILDING D - ELEVATIONS**

Drawing Number: DA-AR-D201  
Revision: A



1 LEVEL 00 - GA  
1 : 200 @ A1

EXTENT OF REFURBISHMENT:  
• PAINTING  
• STORAGE  
• CARPET  
• FURNITURE

#### LEGEND

- HB-EX
- HB ST-EX
- PAA-EX
- SELU HB
- SELU HB-EX
- SELU HB ST
- SELU HB ST-EX
- SELU PAA
- SELU PAA-EX
- SELU WD-EX
- STORAGE / SERVICES / COMMS-EX
- STUDENT AMENITIES-EX
- WD-EX

**NSW GOVERNMENT**  
**Department of Planning and Environment**  
*Issued under the Environmental Planning and Assessment Act 1979*  
Application No: SSD-23330227  
Signed: JC  
Granted on: 20 May 2022  
Sheet no: 26 of 49

Key Plan:



**Drawing Disclaimer:**  
Do not scale from drawings.  
Verify all dimensions on site before commencing work.  
Copying or reproduction of this drawing is strictly prohibited without the consent of PTW Architects.  
**Note:**  
PTW takes no responsibility for external building elements. Anything connected with any design, materials selection, construction or installation of any cladding, facade or external building element must be checked by and remains the responsibility of others, including suitably qualified experts as may be required.

Rev	Amendment	By	Chk*	Date
B	SSDA SUBMISSION	MB	DJ	21/10/20
A	DRAFT SSDA SUBMISSION	MB	DJ	21/09/24

*Registered Architect
DHJ Diane H Jones NSW Arch 4778

Consultants

Client



**Education**

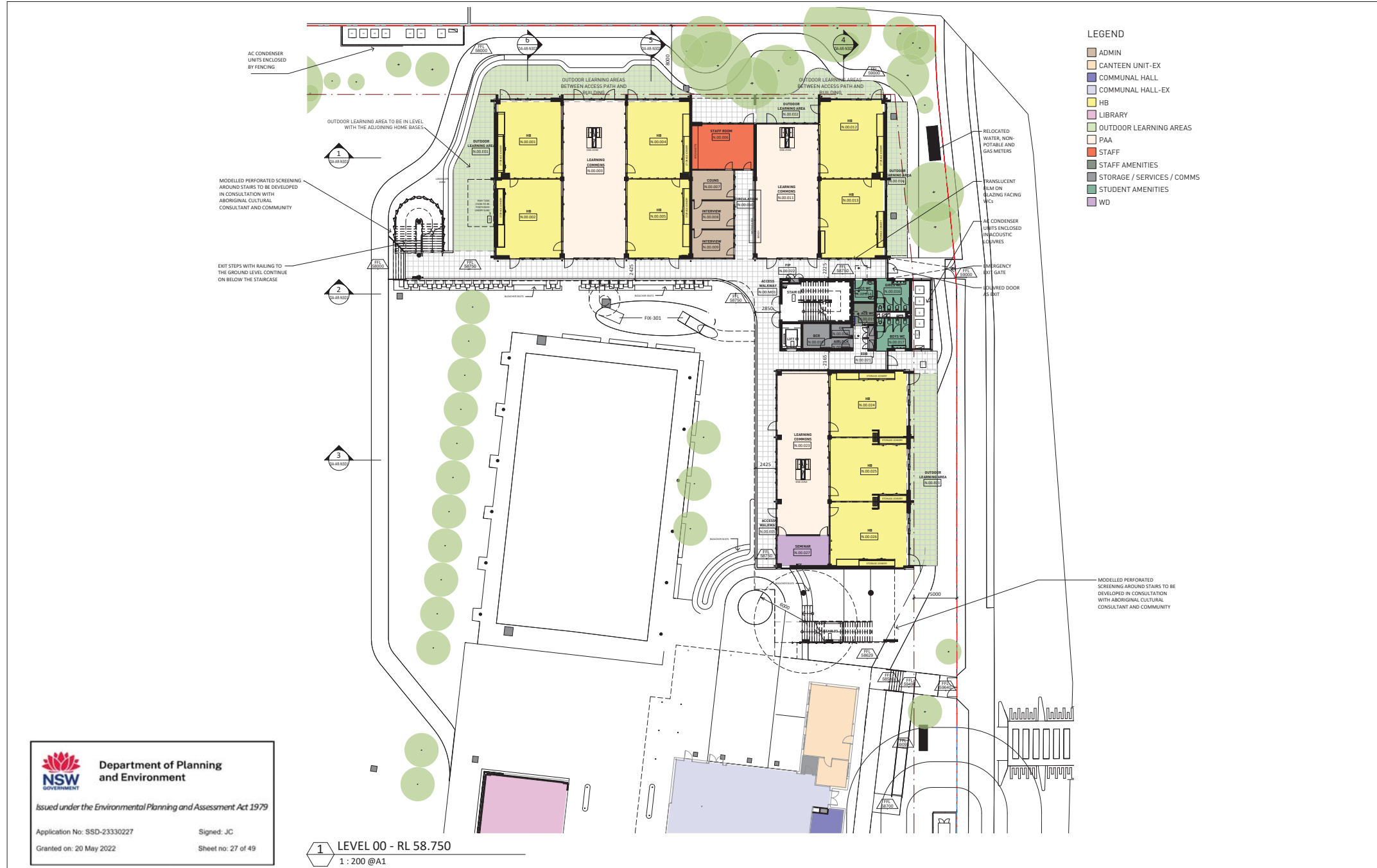
**Architect**  
PTW Architects  
Level 11, 88 Phillip Street  
Sydney NSW 2000 Australia  
T +61 2 9232 5877  
[ptw.com.au](http://ptw.com.au)  
Peddie Thorp & Walker P/L  
ABN 23 000 454 624  
Trading as PTW Architects

NSW Nominated Architects  
S Parsons Architects No 6098  
D Jones Architect No 4778



**Project** PA030470  
**John Palmer Public School**  
85 The Ponds Blvd, The Ponds NSW 2769  
**Status**  
SSDA SUBMISSION

Title	Revision
SSDA	
<b>BUILDING F - GA - LEVEL 00</b>	
Drawing Number	Revision
<b>DA-AR-F103</b>	<b>B</b>





**Department of Planning  
and Environment**

Issued under the Environmental Planning and Assessment Act 1979




Application No: SSD-23330227

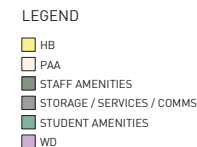
Signed: JC

Granted on: 20 May 2022

Sheet no: 27 of 49

1 LEVEL 00 - RL 58.750  
1 : 200 @A1

<div>Key Plan:</div> <div></div>	<div>Drawing Disclaimer:</div> <div>Do not scale from drawings. Verify all dimensions on site before commencing work. Copying or reproduction of this drawing is strictly prohibited without the consent of PTW Architects</div> <div>Note</div> <div>PTW takes no responsibility for external building elements. Anything connected with any design, materials selection, construction or installation of any cladding, facade or external building element must be checked by and remains the responsibility of others, including suitably qualified experts as may be required.</div>	<table><tr><th>Rev</th><th>Amendment</th><th>By</th><th>Chk*</th><th>Date</th></tr><tr><td>B</td><td>SSDA SUBMISSION</td><td>QF</td><td>DJ</td><td>211008</td></tr><tr><td>A</td><td>DRAFT SSDA SUBMISSION</td><td>QF</td><td>DJ</td><td>210924</td></tr></table>	Rev	Amendment	By	Chk*	Date	B	SSDA SUBMISSION	QF	DJ	211008	A	DRAFT SSDA SUBMISSION	QF	DJ	210924	<table><tr><th>*Registered Architect</th><th>Consultants</th><th>Client</th></tr><tr><td>DHI, Dianne H Jones NSW Arch 4778</td><td></td><td></td></tr></table>	*Registered Architect	Consultants	Client	DHI, Dianne H Jones NSW Arch 4778			<div><div><div>Education</div></div><div><div><div>PTW</div></div><div><div>Architect</div><div>PTW Architects</div><div>Level 11, 88 Phillip Street</div><div>Sydney NSW 2000 Australia</div><div>T +61 2 9232 5877</div><div>ptw.com.au</div></div></div></div>	<div><div><div>01251015m</div><div>1 : 200 @ A1</div></div><div>Project PA030470</div><div>John Palmer Public School</div><div>85 The Ponds Blvd, The Ponds NSW 2769</div></div> <div><div>Status</div><div>SSDA SUBMISSION</div></div>
	Rev	Amendment	By	Chk*	Date																					
	B	SSDA SUBMISSION	QF	DJ	211008																					
	A	DRAFT SSDA SUBMISSION	QF	DJ	210924																					
	*Registered Architect	Consultants	Client																							
DHI, Dianne H Jones NSW Arch 4778																										
				<div><div>Drawing Number</div><div>DA-AR-N103</div></div> <div><div>Revision</div><div>B</div></div>																						



MODELLED PERFORATED SCREENING  
AROUND STAIRS TO BE DEVELOPED  
IN CONSULTATION WITH  
ABORIGINAL CULTURAL  
CONSULTANT AND COMMUNITY

— TRANSLUCENT  
FILM ON  
GLAZING FACING  
WCs

MODELLED PERFORATED  
SCREENING AROUND STAIRS TO BE  
DEVELOPED IN CONSULTATION  
WITH ABORIGINAL CULTURAL  
CONSULTANT AND COMMUNITY



*Issued under the Environmental Planning and Assessment Act 1979*

Application No: SSD-23330227

Granted on: 20 May 2022

Signed: JC

Sheet no: 28 of 49

1 LEVEL 01 - RL 62.500  
1 : 200 @A1

**Key Plan:**



**Drawing Disclaimer:**  
The user hereby certifies that

Do not scale from drawings.  
Verify all dimensions on site before commencing work.  
Copying or reproduction of this drawing is strictly  
prohibited without the consent of PTW Architects

**Note**  
PTW takes no responsibility for external building elements. Anything connected with any design, materials selection, construction or installation of any cladding, facade or external building element must be checked by and remains the responsibility of others, including suitably qualified experts as may be required.

Rev	Amendment	By	Chk*	Date
B	SSDA SUBMISSION	QF	DJ	211008
A	DRAFT SSDA SUBMISSION	QF	DJ	210924

*Registered Architect		
DHJ	Diane H Jones	NSW Arch 4778

### Consultants

Client



## Education

**Architect**  
PTW Architects  
Level 11, 88 Phillip Street  
Sydney NSW 2000 Australia  
T +61 2 9232 5877  
[ptw.com.au](http://ptw.com.au)

Peddie Thorp & Walker P/L  
ABN 23 000 454 624  
trading as PTW Architects

PTW

0	1	2	5	10	15
---	---	---	---	----	----

1:200 @ A1

---

Project PA030470

## John Palmer Public School

85 The Ponds Blvd, The Ponds NSW 2769

---

Status

**SSDA SUBMISSION**

Title
SSDA
GA - LEVEL 01

Drawing Number  
DA-AR-N113

B







**Department of Planning  
and Environment**

Issued under the Environmental Planning and Assessment Act 1979


Application No: SSD-23330227

Signed: JC


Granted on: 20 May 2022

Sheet no: 29 of 49

Key Plan:



N



Drawing Disclaimer:

Do not scale from drawings.  
Verify all dimensions on site before commencing work.  
Copying or reproduction of this drawing is strictly prohibited without the consent of PTW Architects

Note

PTW takes no responsibility for external building elements. Anything connected with any design, materials selection, construction or installation of any cladding, facade or external building element must be checked by and remains the responsibility of others, including suitably qualified experts as may be required.

Rev	Amendment	By	Chk*	Date	*Registered Architect
B	SSDA SUBMISSION	OF	DJ	21.10.08	DHI Diane H Jones NSW Arch 4778
A	DRAFT SSDA SUBMISSION	OF	DJ	21.09.24	

Consultants

Client

Architect

PTW Architects

Level 11, 88 Phillip Street

Sydney NSW 2000 Australia

T +61 2 9232 5877

ptw.com.au

PTW

1: 200 @ A1

Project PA030470

John Palmer Public School

85 The Ponds Blvd, The Ponds NSW 2769

Status

SSDA SUBMISSION

1

2

5

10

15m

Title

SSDA

GA - LEVEL 02

Drawing Number

DA-AR-N123

Revision

B

NSW

GOVERNMENT

Education

Peddie Thorp & Walker P/L

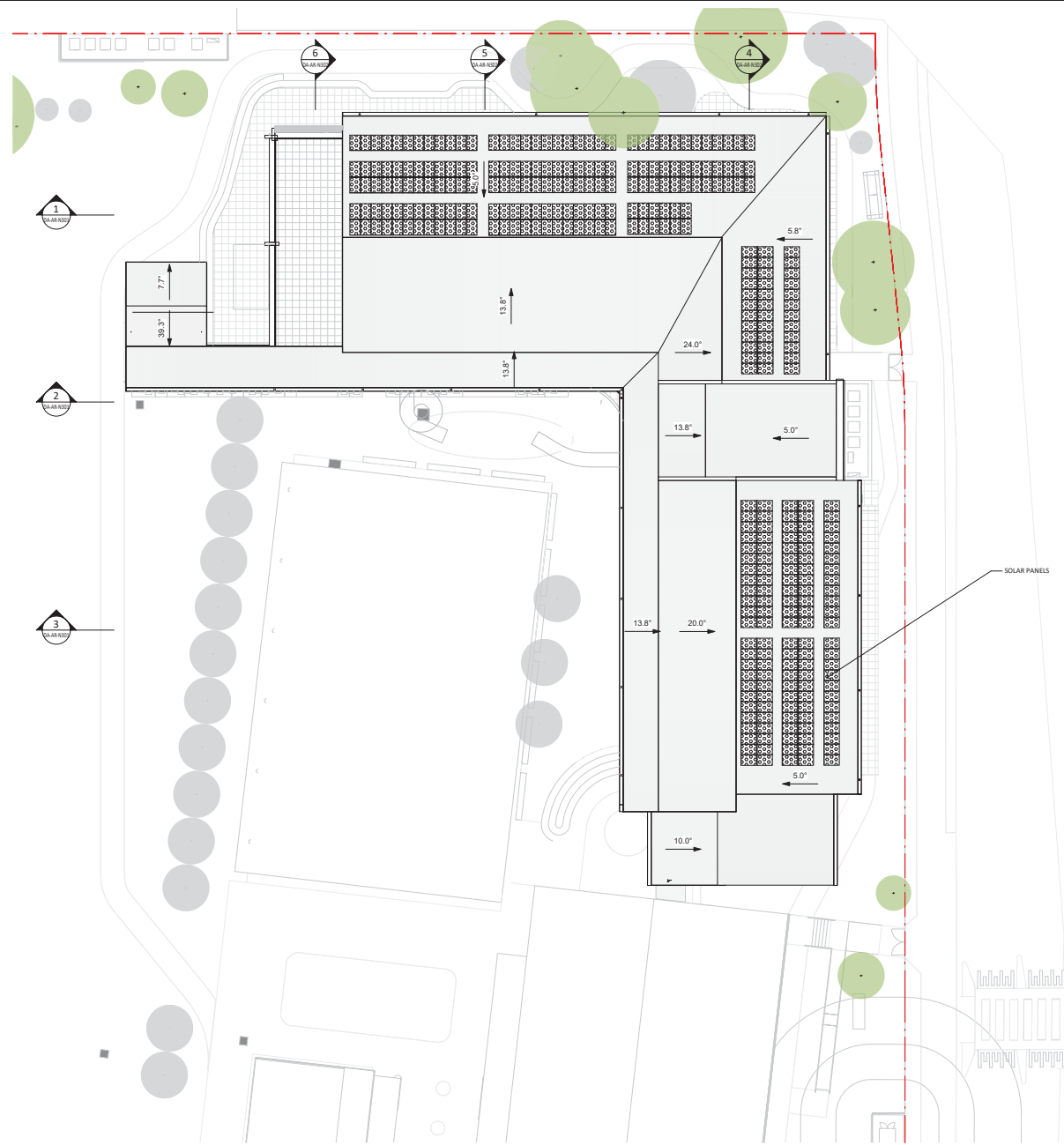
ABN 23 000 454 624

Trading as PTW Architects

NSW Nominated Architects

5 Parsons Architect No 6098

D Jones Architect No 4778



1 ROOF PLAN  
1 : 200 @A1

**NSW GOVERNMENT**  
Department of Planning and Environment  
Issued under the Environmental Planning and Assessment Act 1979  
Application No: SSD-23330227 Signed: JC  
Granted on: 20 May 2022 Sheet no: 30 of 49

Key Plan:



**Drawing Disclaimer:**  
Do not scale from drawings.  
Verify all dimensions on site before commencing work.  
Copying or reproduction of this drawing is strictly prohibited without the consent of PTW Architects.  
**Note**  
PTW takes no responsibility for external building elements. Anything connected with any design, materials selection, construction or installation of any cladding, facade or external building element must be checked by and remains the responsibility of others, including suitably qualified experts as may be required.

Rev	Amendment	By	Chk*	Date	*Registered Architect
B	SSDA SUBMISSION	OF	DJ	211008	DHJ Diane H Jones NSW Arch 4778
A	DRAFT SSDA SUBMISSION	OF	DJ	210924	

Consultants

Client



Architect  
PTW Architects  
Level 11, 88 Phillip Street  
Sydney NSW 2000 Australia  
T +61 2 9232 5877  
ptw.com.au

Peddie Thorp & Walker P/L  
ABN 23 000 454 624  
Trading as PTW Architects  
NSW Nominated Architects  
5 Parsons Architects No 6098  
D Jones Architect No 4778



Project PA030470  
**John Palmer Public School**  
85 The Ponds Blvd, The Ponds NSW 2769  
Status  
SSDA SUBMISSION

Title  
SSDA  
GA - LEVEL 03 - ROOF  
Drawing Number  
DA-AR-N133  
Revision  
B