

1 ELEVATION FROM THE PONDS BLVD  
1 : 300 @A1



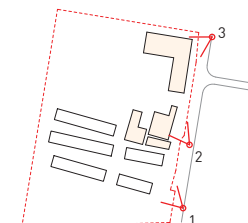
1\_VIEW LOOKING TOWARDS THE PRIMARY PEDESTRIAN AND VEHICULAR ENTRY



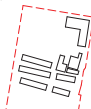
2\_VIEW LOOKING TOWARDS THE HALL, CANTEEN AND ITS SERVICE ENTRY



3\_VIEW LOOKING SOUTH WEST TOWARDS THE NEW BUILDING



Key Plan:



**Drawing Disclaimer:**  
Do not scale from drawings.  
Verify all dimensions on site before commencing work.  
Copying or reproduction of this drawing is strictly prohibited without the consent of PTW Architects.  
**Note:**  
PTW takes no responsibility for external building elements. Anything connected with any design, materials selection, construction or installation of any cladding, facade or external building element must be checked by and remains the responsibility of others, including suitably qualified experts as may be required.

Rev	Amendment	By	Chk*	Date
B	SSDA SUBMISSION	MB	DJ	21.10.08
A	DRAFT SSDA SUBMISSION	MB	DJ	21.09.24

**\*Registered Architect**  
DHI Diane H Jones NSW Arch 4778

Consultants

Client



Education

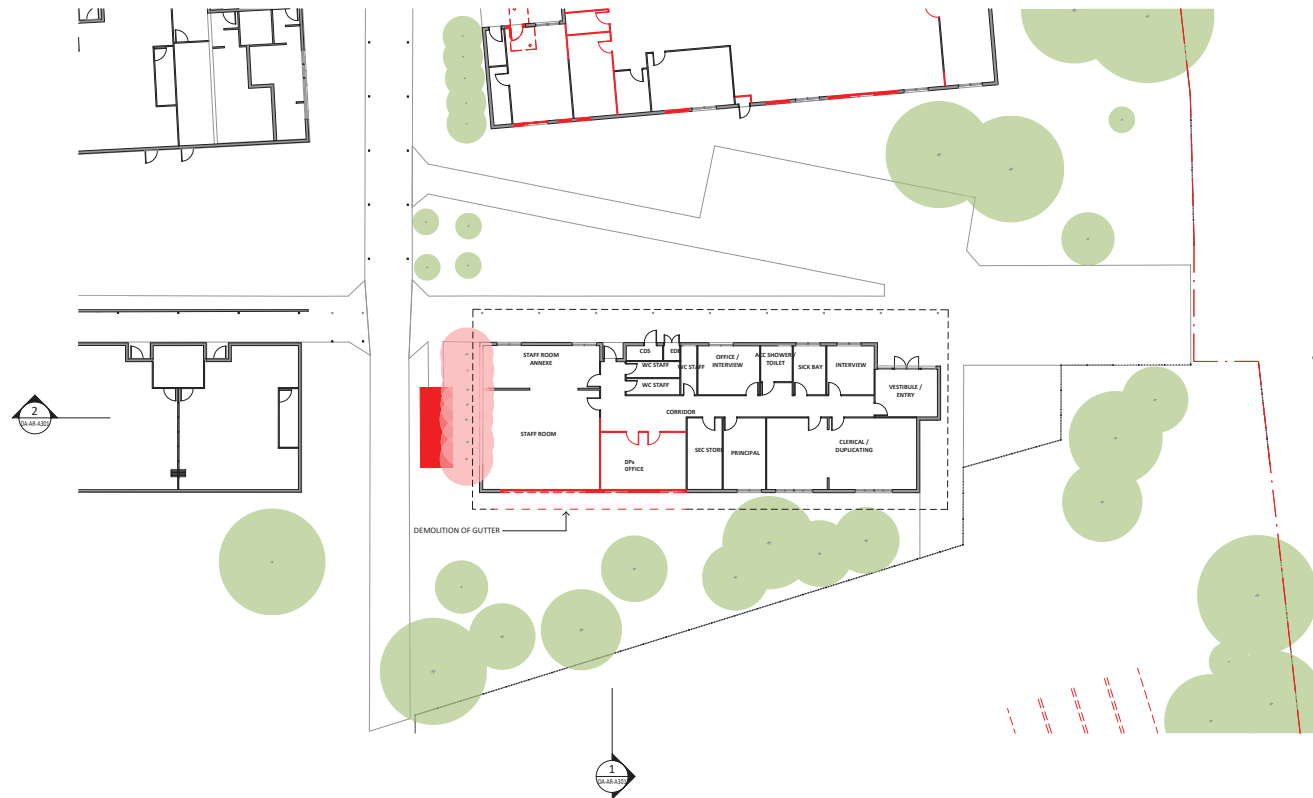
**Architect**  
PTW Architects  
Level 11, 88 Phillip Street  
Sydney NSW 2000 Australia  
T +61 2 9232 5877  
[ptw.com.au](http://ptw.com.au)

Peddie Thorp & Walker P/L  
ABN 23 000 454 624  
Trading as PTW Architects  
NSW Nominated Architects  
S Parsons Architects No 6098  
D Jones Architect No 4778



**John Palmer Public School**  
85 The Ponds Blvd, The Ponds NSW 2769  
**SSDA SUBMISSION**

**Title**  
SSDA  
**STREET ELEVATION**  
**Drawing Number**  
DA-AR-0305  
**Revision**  
B



1 LEVEL 00 - DEMO PLAN  
1 : 200 @A1

- - - Demolished roof
- - - Demolished wall
- Removed shipping container
- Removed tree

**Department of Planning and Environment**

*Issued under the Environmental Planning and Assessment Act 1979*

Application No: SSD-23330227

Signed: JC

Granted on: 20 May 2022

Sheet no: 12 of 49

Key Plan:



**Drawing Disclaimer:**  
Do not scale from drawings.  
Verify all dimensions on site before commencing work.  
Copying or reproduction of this drawing is strictly prohibited without the consent of PTW Architects

**Note**  
PTW takes no responsibility for external building elements. Anything connected with any design, materials selection, construction or installation of any cladding, facade or external building element must be checked by and remains the responsibility of others, including suitably qualified experts as may be required.

Rev	Amendment	By	Chk*	Date
B	SSDA SUBMISSION	MB	DJ	211008
A	DRAFT SSDA SUBMISSION	MB	DJ	210924

*Registered Architect
DHJ Diane H Jones NSW Arch 4778

Consultants

Client



Education

Architect  
PTW Architects  
Level 11, 88 Phillip Street  
Sydney NSW 2000 Australia  
T +61 2 9232 5877  
[ptw.com.au](http://ptw.com.au)

Peddie Thorp & Walker P/L  
ABN 23 000 454 624  
Trading as PTW Architects  
NSW Nominated Architects  
S Parsons Architect No 6098  
D Jones Architect No 4778

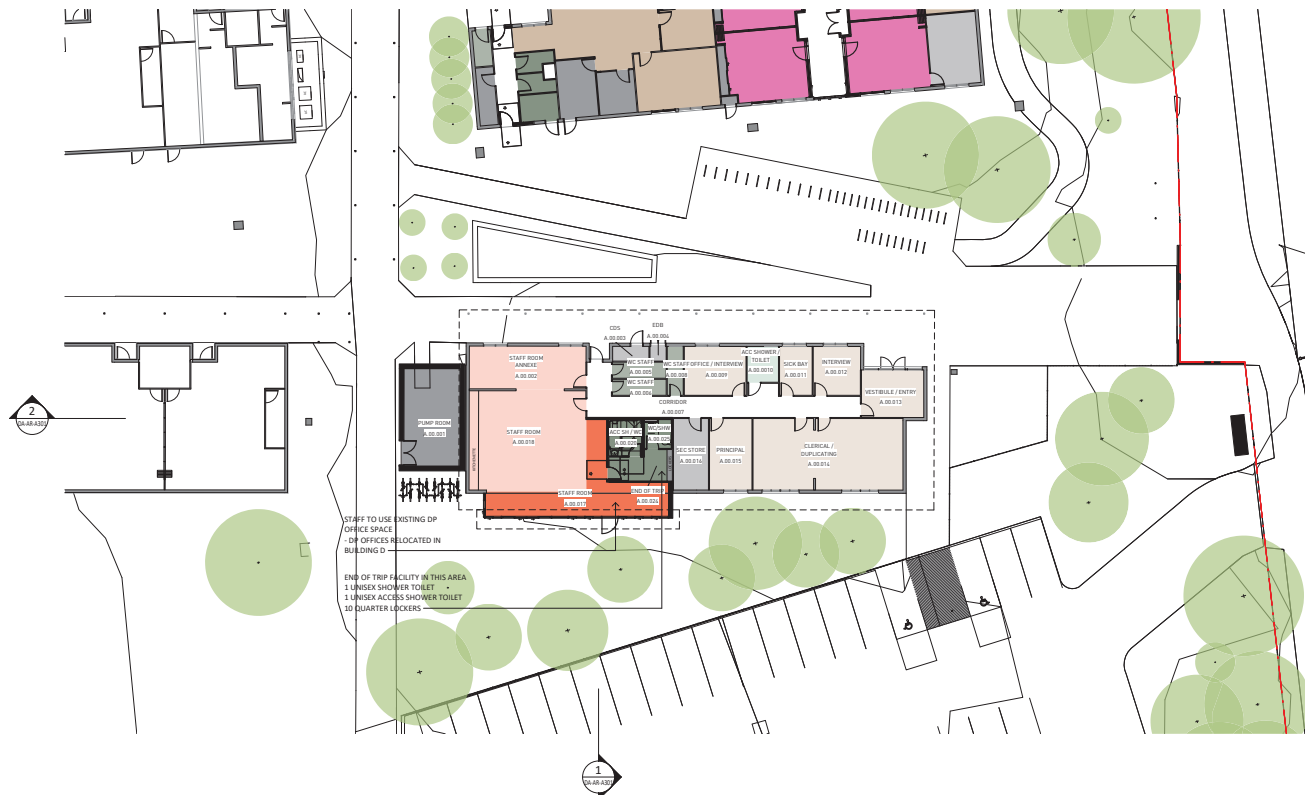


Project Project Number  
**John Palmer Public School**  
85 The Ponds Blvd, The Ponds NSW 2769

Status  
SSDA SUBMISSION

Title  
SSDA  
**BUILDING A - DEMO PLAN -**  
**LEVEL 00**  
Drawing Number  
**DA-AR-A102**

Revision  
**B**



- LEGEND
- ADMIN
  - ADMIN-EX
  - SPECIAL PROGRAMS
  - STAFF
  - STAFF-EX
  - STAFF AMENITIES
  - STAFF AMENITIES-EX
  - STORAGE / SERVICES / COMMS
  - STORAGE / SERVICES / COMMS-EX
  - STUDENT AMENITIES-EX

- LEGEND
- Existing tree
  - Removed tree

1 LEVEL 00 - GA  
1 : 200 @A1

**Department of Planning and Environment**

Issued under the Environmental Planning and Assessment Act 1979

Application No: SSD-23330227 Signed: JC  
Granted on: 20 May 2022 Sheet no: 13 of 49

Key Plan:



**Drawing Disclaimer:**  
Do not scale from drawings.  
Verify all dimensions on site before commencing work.  
Copying or reproduction of this drawing is strictly prohibited without the consent of PTW Architects

**Note**  
PTW takes no responsibility for external building elements. Anything connected with any design, materials selection, construction or installation of any cladding, facade or external building element must be checked by and remains the responsibility of others, including suitably qualified experts as may be required.

Rev	Amendment	By	Chk*	Date
B	SSDA SUBMISSION	MB	DJ	21/10/08
A	DRAFT SSDA SUBMISSION	MB	DJ	21/09/24

*Registered Architect
DHI Diane H Jones NSW Arch 4778

Consultants



Education

Architect  
PTW Architects  
Level 11, 88 Phillip Street  
Sydney NSW 2000 Australia  
T +61 2 9232 5877  
ptw.com.au

Peddie Thorp & Walker P/L  
ABN 23 000 454 624  
Trading as PTW Architects  
NSW Nominated Architects  
5 Parsons Architect No 6098  
D Jones Architect No 4778

PTW

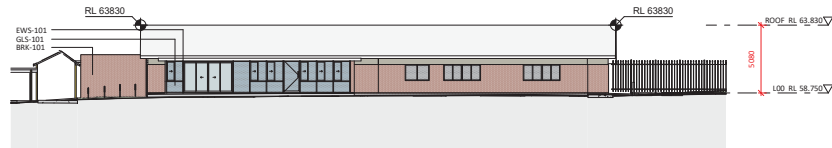
Project Project Number  
**John Palmer Public School**  
85 The Ponds Blvd, The Ponds NSW 2769

Status  
SSDA SUBMISSION

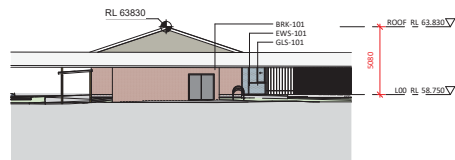
Title  
SSDA  
**BUILDING A - GA - LEVEL 00**

Drawing Number  
**DA-AR-A103**

Revision  
**B**



1 BUILDING A - SOUTH ELEVATION  
1 : 200 @A1



2 BUILDING A - WEST ELEVATION  
1 : 200 @A1

**NSW GOVERNMENT**  
Department of Planning and Environment

*Issued under the Environmental Planning and Assessment Act 1979*

Application No: SSD-23330227  
Signed: JC  
Granted on: 20 May 2022  
Sheet no: 14 of 49

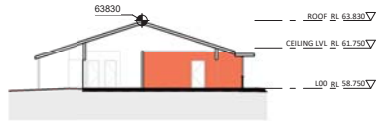
Key Plan:



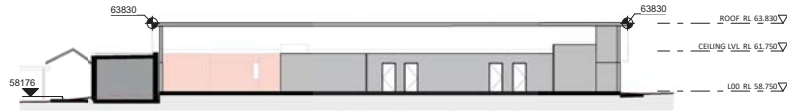
**Drawing Disclaimer:**  
Do not scale from drawings.  
Verify all dimensions on site before commencing work.  
Copying or reproduction of this drawing is strictly prohibited without the consent of PTW Architects

**Note**  
PTW takes no responsibility for external building elements. Anything connected with any design, materials selection, construction or installation of any cladding, facade or external building element must be checked by and remains the responsibility of others, including suitably qualified experts as may be required.

Rev	Amendment	By	Chk*	Date	*Registered Architect	Consultants	Client	Architect	Project	Project Number	Title	
A	SSDA SUBMISSION	MB	DJ	21/10/20	DHJ Diane H Jones NSW Arch 4778			PTW Architects Level 11, 88 Phillip Street Sydney NSW 2000 Australia T +61 2 9232 5877 ptw.com.au	John Palmer Public School 85 The Ponds Blvd, The Ponds NSW 2769		SSDA BUILDING A - ELEVATIONS	
							 					<div><div>10</div><div>5</div><div>10</div><div>5</div><div>10</div><div>5</div></div> <div>1: 200 @ A1</div> <div>Drawing Number</div> <div>Revision</div>
							<div><div>Peddie Thorp &amp; Walker P/L ABN 23 006 664 624 trading as PTW Architects</div><div>NSW Nominated Architects 9 Parsons Archibald NSW 6008 D Jones Architect No. 4778</div></div>				DA-AR-A201	A
									Status		SSDA SUBMISSION	



1 SECTION 1  
1:200 @A1



2 SECTION 2  
1:200 @A1

--- EXISTING GROUND LEVELS



Department of Planning  
and Environment

Issued under the Environmental Planning and Assessment Act 1979

Application No: SSD-23330227

Signed: JC

Granted on: 20 May 2022

Sheet no: 15 of 49

Key Plan:



**Drawing Disclaimer:**  
Do not scale from drawings.  
Verify all dimensions on site before commencing work.  
Copying or reproduction of this drawing is strictly prohibited without the consent of PTW Architects.  
**Note**  
PTW takes no responsibility for external building elements. Anything connected with any design, materials selection, construction or installation of any cladding, facade or external building element must be checked by and remains the responsibility of others, including suitably qualified experts as may be required.

Rev	Amendment	By	Chk*	Date
A	SSDA SUBMISSION	MB	DJ	21/10/20

Registered Architect
DHJ Diane H Jones NSW Arch 4778

Consultants

Client



Education

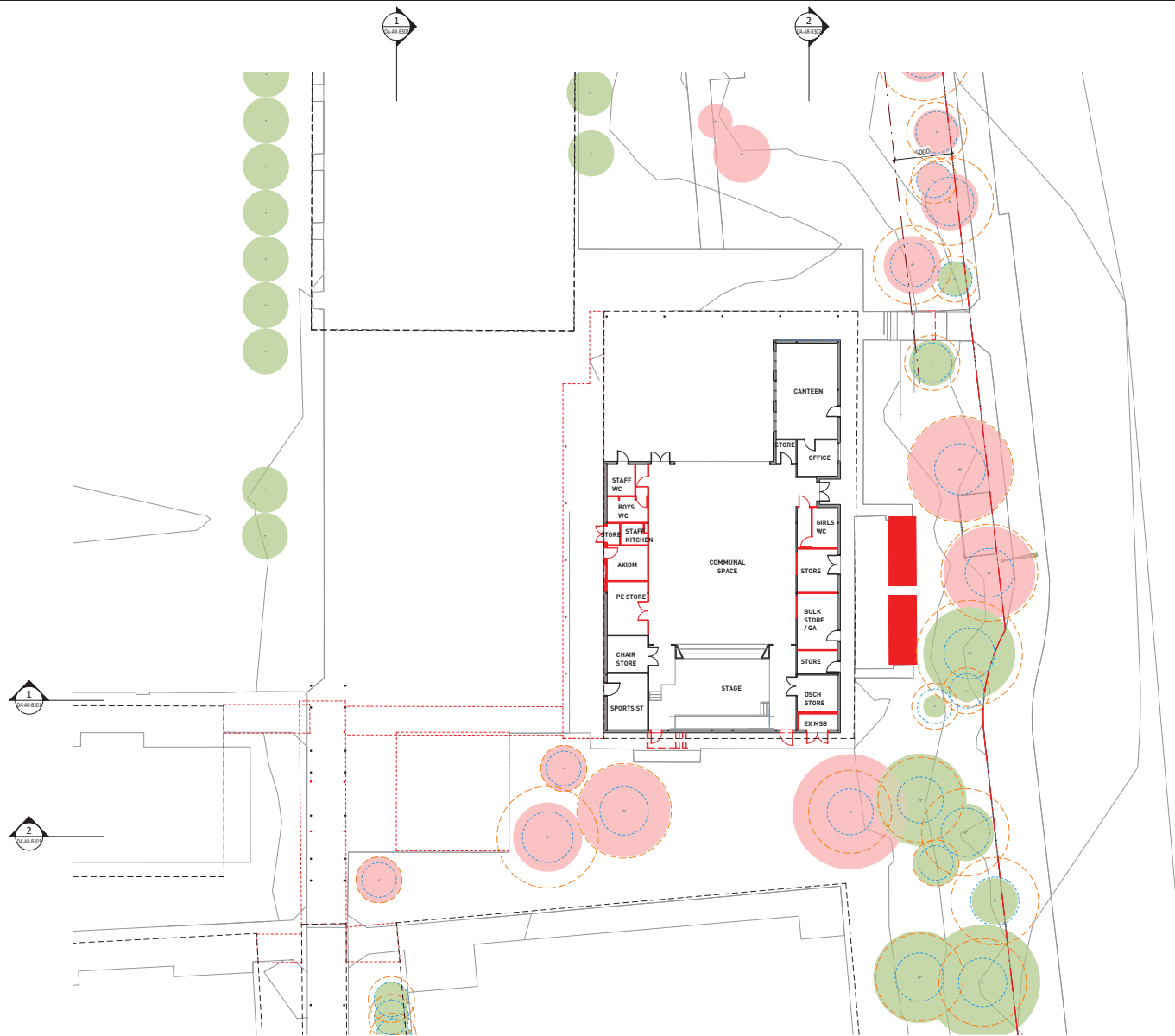
Architect  
PTW Architects  
Level 11, 88 Phillip Street  
Sydney NSW 2000 Australia  
T +61 2 9232 5877  
[ptw.com.au](http://ptw.com.au)

Peddie Thorp & Walker P/L  
ABN 23 000 454 624  
Trading as PTW Architects  
NSW Nominated Architects  
S Parsons Architects No 6098  
D Jones Architect No 4778



Project Project Number  
John Palmer Public School  
85 The Ponds Blvd, The Ponds NSW 2769  
Status  
SSDA SUBMISSION

Title  
SSDA  
BUILDING A - SECTIONS  
Drawing Number  
DA-AR-A301  
Revision  
A



1 LEVEL 00 - DEMO PLAN  
1 : 200 @ A1

- Demolished roof
- Demolished wall
- Removed shipping container
- Removed tree

**NSW GOVERNMENT** Department of Planning and Environment  
Issued under the Environmental Planning and Assessment Act 1979  
Application No: SSD-23330227 Signed: JC  
Granted on: 20 May 2022 Sheet no: 16 of 49

Key Plan:  
Drawing Disclaimer:  
Do not scale from drawings.  
Verify all dimensions on site before commencing work.  
Copying or reproduction of this drawing is strictly prohibited without the consent of PTW Architects  
Note:  
PTW takes no responsibility for external building elements. Anything connected with any design, materials selection, construction or installation of any cladding, facade or external building element must be checked by and remains the responsibility of others, including suitably qualified experts as may be required.

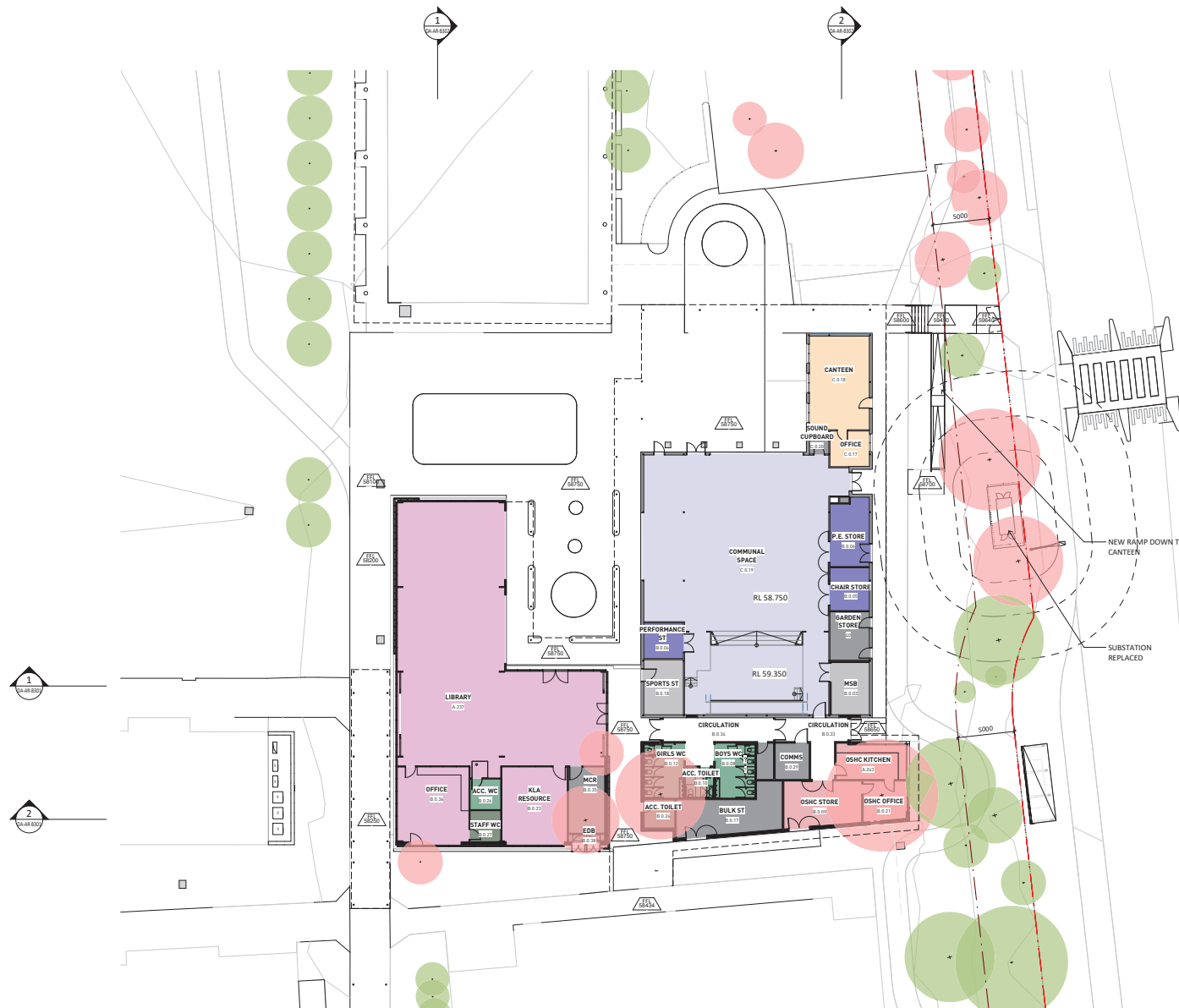
Rev	Amendment	By	Chk*	Date
B	SSDA SUBMISSION	MB	DJ	211006
A	DRAFT SSDA SUBMISSION	MB	DJ	210924

*Registered Architect	Consultants	Client
DHI Diane H Jones NSW Arch 4778		

*Registered Architect	Consultants	Client
DHI Diane H Jones NSW Arch 4778		

**NSW GOVERNMENT** Education  
Architect  
PTW Architects  
Level 11, 88 Phillip Street  
Sydney NSW 2000 Australia  
T +61 2 9232 5877  
ptw.com.au  
Peddie Thorp & Walker P/L  
ABN 23 000 454 624  
Trading as PTW Architects  
NSW Nominated Architects  
S Parsons Architects No 6098  
D Jones Architect No 4778

**PTW**  
Project: PA030470  
John Palmer Public School  
85 The Ponds Blvd, The Ponds NSW 2769  
Status: SSDA SUBMISSION  
Title: SSDA  
BUILDING B - DEMOLITION  
Drawing Number: DA-AR-B102  
Revision: B



- LEGEND
- CANTEN UNIT-EX
  - COMMUNAL HALL
  - COMMUNAL HALL-EX
  - LIBRARY
  - OSCH
  - STAFF AMENITIES
  - STORAGE / SERVICES / COMMS
  - STORAGE / SERVICES / COMMS-EX
  - STUDENT AMENITIES

- LEGEND
- Existing tree
  - Removed tree



1 LEVEL 00 - GA  
1 : 200 @ A1

**Department of Planning  
and Environment**

*Issued under the Environmental Planning and Assessment Act 1979*

Application No: SSD-23330227      Signed: JC

Granted on: 20 May 2022      Sheet no: 17 of 49

<div>Key Plan:</div> <div></div>	<div><div><div>N</div><div></div></div><div>Drawing Disclaimer:</div><div>Do not scale from drawings. Verify all dimensions on site before commencing work. Copying or reproduction of this drawing is strictly prohibited without the consent of PTW Architects</div><div>Note</div><div>PTW takes no responsibility for external building elements. Anything connected with any design, materials selection, construction or installation of any cladding, facade or external building element must be checked by and remains the responsibility of others, including suitably qualified experts as may be required.</div></div>	<table><tr><th>Rev</th><th>Amendment</th><th>By</th><th>Chk*</th><th>Date</th></tr><tr><td>B</td><td>SSDA SUBMISSION</td><td>MB</td><td>DJ</td><td>211006</td></tr><tr><td>A</td><td>DRAFT SSDA SUBMISSION</td><td>MB</td><td>DJ</td><td>210924</td></tr></table>	Rev	Amendment	By	Chk*	Date	B	SSDA SUBMISSION	MB	DJ	211006	A	DRAFT SSDA SUBMISSION	MB	DJ	210924	<table><tr><th>*Registered Architect</th><th>By</th><th>Chk*</th><th>Date</th></tr><tr><td>DHI</td><td>Diane H Jones</td><td>NSW Arch 4778</td><td></td></tr></table>	*Registered Architect	By	Chk*	Date	DHI	Diane H Jones	NSW Arch 4778		Consultants	Client	<div><div><div>Architect</div><div>PTW Architects</div><div>Level 11, 88 Phillip Street</div><div>Sydney NSW 2000 Australia</div><div>T +61 2 9232 5877</div><div>ptw.com.au</div></div><div><div><div>NSW GOVERNMENT</div><div>Education</div></div><div><div>Peddie Thorp &amp; Walker P/L</div><div>ABN 23 000 454 624</div><div>trading as PTW Architects</div></div><div><div>NSW Nominated Architects</div><div>5 Persons Architect No 4098</div><div>D Jones Architect No 4778</div></div></div></div>	<div><div><div>0</div><div>1</div><div>2</div><div>3</div><div>4</div><div>5</div><div>6</div><div>7</div><div>8</div><div>9</div><div>10</div><div>15m</div></div><div>As indicated</div><div>@ A1</div><div>Project: PA030470</div><div><div>John Palmer Public School</div><div>85 The Ponds Blvd, The Ponds NSW 2769</div></div><div>Status</div><div>SSDA SUBMISSION</div></div>	<table><tr><th>Title</th><th>Drawing Number</th><th>Revision</th></tr><tr><td>SSDA</td><td>BUILDING B - GA - LEVEL 00</td><td></td></tr><tr><td></td><td>DA-AR-B103</td><td>B</td></tr></table>	Title	Drawing Number	Revision	SSDA	BUILDING B - GA - LEVEL 00			DA-AR-B103	B
		Rev	Amendment	By	Chk*	Date																																		
B	SSDA SUBMISSION	MB	DJ	211006																																				
A	DRAFT SSDA SUBMISSION	MB	DJ	210924																																				
*Registered Architect	By	Chk*	Date																																					
DHI	Diane H Jones	NSW Arch 4778																																						
Title	Drawing Number	Revision																																						
SSDA	BUILDING B - GA - LEVEL 00																																							
	DA-AR-B103	B																																						



LEGEND

Existing tree

Removed tree

**Department of Planning and Environment**

Issued under the Environmental Planning and Assessment Act 1979

Application No: SSD-23330227 Signed: JC

Granted on: 20 May 2022 Sheet no: 18 of 49

Key Plan:



**Drawing Disclaimer:**  
Do not scale from drawings.  
Verify all dimensions on site before commencing work.  
Copying or reproduction of this drawing is strictly prohibited without the consent of PTW Architects

**Note:**  
PTW takes no responsibility for external building elements. Anything connected with any design, materials selection, construction or installation of any cladding, facade or external building element must be checked by and remains the responsibility of others, including suitably qualified experts as may be required.

Rev	Amendment	By	Chk*	Date
B	SSDA SUBMISSION	MB	DJ	21.10.06
A	DRAFT SSDA SUBMISSION	MB	DJ	21.09.24

*Registered Architect	Consultants
DHI Diane H Jones NSW Arch 4778	

Client



Education

Architect  
PTW Architects  
Level 11, 88 Phillip Street  
Sydney NSW 2000 Australia  
T +61 2 9232 5877  
ptw.com.au

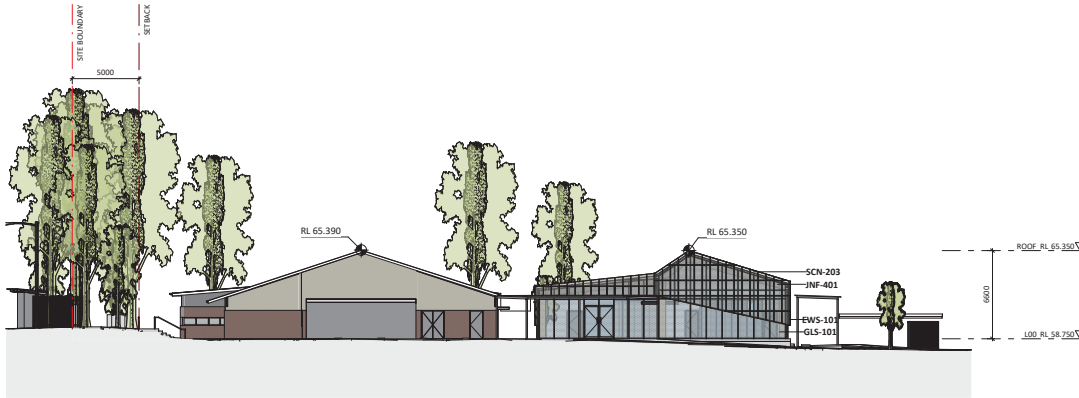
Peddie Thorp & Walker P/L  
ABN 23 000 454 624  
Trading as PTW Architects

NSW Nominated Architects  
5 Parsons Architects No 6098  
D Jones Architect No 4778

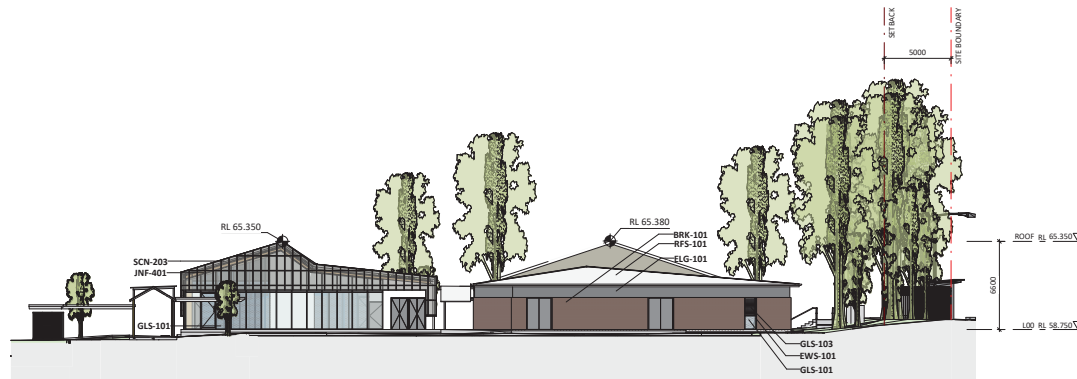
**PTW**

As indicated  
@ A1  
Project PA030470  
Status  
SSDA SUBMISSION

Title  
SSDA  
BUILDING B - GA - LEVEL 01 -  
ROOF  
Drawing Number  
DA-AR-B113  
Revision  
B



1 LIBRARY AND HALL - NORTH ELEVATION  
1 : 200 @A1



2 LIBRARY AND HALL - SOUTH ELEVATION  
1 : 200 @A1

**Department of Planning and Environment**

*Issued under the Environmental Planning and Assessment Act 1979*

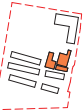
Application No: SSD-23330227

Granted on: 20 May 2022

Signed: JC

Sheet no: 19 of 49

Key Plan:



**Drawing Disclaimer:**  
Do not scale from drawings.  
Verify all dimensions on site before commencing work.  
Copying or reproduction of this drawing is strictly prohibited without the consent of PTW Architects

**Note**  
PTW takes no responsibility for external building elements. Anything connected with any design, materials selection, construction or installation of any cladding, facade or external building element must be checked by and remains the responsibility of others, including suitably qualified experts as may be required.

Rev	Amendment	By	Chk*	Date
B	SSDA SUBMISSION	MB	DJ	211006
A	DRAFT SSDA SUBMISSION	MB	DJ	210924

*Registered Architect
DHJ Diane H Jones NSW Arch 4778

Consultants

Client



**Education**

**Architect**  
PTW Architects  
Level 11, 88 Phillip Street  
Sydney NSW 2000 Australia  
T +61 2 9232 5877  
[ptw.com.au](http://ptw.com.au)

Peddie Thorp & Walker P/L  
ABN 23 000 454 624  
Trading as PTW Architects

NSW Nominated Architects  
S Parsons Architects No 6098  
D Jones Architect No 4778



0 1 2 3 4 5 10 15m

1 : 200 @ A1

Project PA030470  
**John Palmer Public School**  
85 The Ponds Blvd, The Ponds NSW 2769

Status  
SSDA SUBMISSION

Title  
SSDA  
**BUILDING B - ELEVATIONS**

Drawing Number  
**DA-AR-B201**

Revision  
**B**



1 LIBRARY AND HALL - EAST ELEVATION  
1 : 200 @ A1



2 LIBRARY AND HALL - WEST ELEVATION  
1 : 200 @ A1



**Department of Planning  
and Environment**

*Issued under the Environmental Planning and Assessment Act 1979*

Application No: SSD-23330227      Signed: JC

Granted on: 20 May 2022      Sheet no: 20 of 49

Key Plan:



**Drawing Disclaimer:**

Do not scale from drawings.  
Verify all dimensions on site before commencing work.  
Copying or reproduction of this drawing is strictly prohibited without the consent of PTW Architects

**Note**  
PTW takes no responsibility for external building elements. Anything connected with any design, materials selection, construction or installation of any cladding, facade or external building element must be checked by and remains the responsibility of others, including suitably qualified experts as may be required.

Rev	Amendment	By	Chk*	Date
B	SSDA SUBMISSION	MB	DJ	21/10/26
A	DRAFT SSDA SUBMISSION	MB	DJ	21/09/24

**\*Registered Architect**  
DHI Diane H Jones NSW Arch 4778

Consultants

Client



**Education**

**Architect**  
PTW Architects  
Level 11, 88 Phillip Street  
Sydney NSW 2000 Australia  
T +61 2 9232 5877  
[ptw.com.au](http://ptw.com.au)

Peddie Thorp & Walker P/L  
ABN 23 000 454 624  
Trading as PTW Architects

NSW Nominated Architects  
5 Parsons Architects No 6098  
D Jones Architect No 4778

**PTW**

0 1 2 5 10 15m  
1 : 200 @ A1  
Project PA030470  
**John Palmer Public School**  
85 The Ponds Blvd, The Ponds NSW 2769  
Status  
SSDA SUBMISSION

Title  
SSDA  
**BUILDING B - ELEVATIONS**  
Drawing Number  
DA-AR-B202  
Revision  
B