



 **Department of Planning
and Environment**

Issued under the Environmental Planning and Assessment Act 1979

Application No: SSD-23330227 Signed: JG

Granted on: 20 May 2022 Sheet no: 1 of 49



-  Demolished roof
-  Demolished wall
-  Removed shipping container
-  Removed tree

1 SITE PLAN - L00 - RL 58.750
1 : 500 @A1

Key Plan:



Drawing Disclaimer:
Do not scale from drawings.
Verify all dimensions on site before commencing work.
Copying or reproduction of this drawing is strictly prohibited without the consent of PTW Architects

Note
PTW takes no responsibility for external building elements. Anything connected with any design, materials selection, construction or installation of any cladding, facade or external building element must be checked by and remains the responsibility of others, including suitably qualified experts as may be required.

Rev	Amendment	By	Chk*	Date
B	SSDA SUBMISSION	MB	DJ	211008
A	DRAFT SSDA SUBMISSION	MB	DJ	210924

*Registered Architect		
DHJ	Diane H Jones	NSW Arch 4778

Consultants

Client



Education

Client	Architect
	PTW Architects
	Level 11, 88 Phillip Street
	Sydney NSW 2000 Australia
	T +61 2 9232 5877

Peddle Thorp & Walker P/L NSW Nominated Architects
ABN 23 000 454 624 S Parsons Architect No.609
trading as PTW Architects D Jones Architect No.4778

PTA

0	5	10	20	30	40
1 : 500 @ A1					
Project PA030470					
John Palmer Public School 85 The Ponds Blvd, The Ponds NSW 2769					
Status					
SSDA SUBMISSION					

Title	
SSDA	
SITE PLAN - DEMO	
Drawing Number	Revision
DA-AR-0010	B



**Department of Planning
and Environment**

Issued under the Environmental Planning and Assessment Act 1979

Application No: SSD-23330227

Signed: JC

Granted on: 20 May 2022

Sheet no: 2 of 49

1

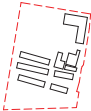
SITE PLAN - L00 - RL 58.750
1 : 500 @A1




- LEGEND**
- ADMIN
 - ADMIN-EX
 - CANTEEN UNIT-EX
 - COMMUNAL HALL
 - COMMUNAL HALL-EX
 - HB
 - HB-EX
 - HB ST
 - HB ST-EX
 - LIBRARY
 - OSCH
 - OUTDOOR LEARNING AREAS
 - PAA
 - PAA-EX
 - SELU HB
 - SELU HB-EX
 - SELU HB ST
 - SELU HB ST-EX
 - SELU PAA
 - SELU PAA-EX
 - SELU WD-EX
 - SPECIAL PROGRAMS
 - STAFF
 - STAFF-EX
 - STAFF AMENITIES
 - STAFF AMENITIES-EX
 - STORAGE / SERVICES / COMMS
 - STORAGE / SERVICES / COMMS-EX
 - STUDENT AMENITIES
 - STUDENT AMENITIES-EX
 - WD
 - WD-EX

- LEGEND**
- Existing Tree
 - Removed Tree

Key Plan:



N



Drawing Disclaimer:
Do not scale from drawings.
Verify all dimensions on site before commencing work.
Copying or reproduction of this drawing is strictly prohibited without the consent of PTW Architects

Note
PTW takes no responsibility for external building elements. Anything connected with any design, materials selection, construction or installation of any cladding, facade or external building element must be checked by and remains the responsibility of others, including suitably qualified experts as may be required.


Rev	Amendment	By	Chk	Date
B	SSDA SUBMISSION	MB	DJ	211008
A	DRAFT SSDA SUBMISSION	MB	DJ	210924

*Registered Architect	Consultants	Client
DHI Diane H Jones NSW Arch 4778		

Architect	Client
PTW Architects Level 11, 88 Phillip Street Sydney NSW 2000 Australia T +61 2 9232 5877 ptw.com.au	



Architect	Client
PTW Architects Level 11, 88 Phillip Street Sydney NSW 2000 Australia T +61 2 9232 5877 ptw.com.au	



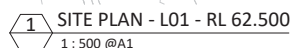
John Palmer Public School
85 The Ponds Blvd, The Ponds NSW 2769

SSDA

SITE PLAN - RL 58.75

DA-AR-0020

B



1 : 500 @A1



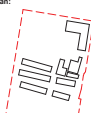
Issued under the Environmental Planning and Assessment Act 1979

Application No: SSD-23330227

Signed: JC

Granted on: 20 May 2022

Sheet no: 3 of 49



Drawing Disclaimer:
Do not make a drawing of this

Do not scale from drawings.
Verify all dimensions on site before commencing work.
Copying or reproduction of this drawing is strictly
prohibited without the consent of PTW Architects

Note

PTW takes no responsibility for external building elements. Anything connected with any design, materials selection, construction or installation of any cladding, facade or external building element must be checked by and remains the responsibility of others, including suitably qualified experts as may be required.

Rev	Amendment	By	Chk*	Date
B	SSDA SUBMISSION	MB	DJ	211008
A	DRAFT SSDA SUBMISSION	MB	DJ	210924

*Registered Architect		
DHJ	Diane H Jones	NSW Arch 4778

Consultants

Client



Education

Architect
PTW Architects
Level 11, 88 Phillip Street
Sydney NSW 2000 Australia
T +61 2 9232 5877
ptw.com.au

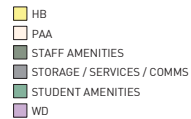
Peddle Thorp & Walker P/L NSW Nominated Architects
ABN 23 000 454 624 S Parsons Architect No.6098
trading as PTW Architects D Jones Architect No.4778

PTW

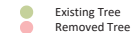
0 5 10 20 30 40
As @ A1
indicated
Project PA030470
John Palmer Public School
85 The Ponds Blvd, The Ponds NSW 2769

Status
SSDA SUBMISSION

LEGEND



LEGEND









**Department of Planning
and Environment**

Issued under the Environmental Planning and Assessment Act 1979

Application No: SSD-23330227Signed: JC

Granted on: 20 May 2022Sheet no: 5 of 49

Key Plan:



Drawing Disclaimer:
Do not scale from drawings.
Verify all dimensions on site before commencing work.
Copying or reproduction of this drawing is strictly prohibited without the consent of PTW Architects

Note
PTW takes no responsibility for external building elements. Anything connected with any design, materials selection, construction or installation of any cladding, facade or external building element must be checked by and remains the responsibility of others, including suitably qualified experts as may be required.


Rev	Amendment	By	Chk*	Date
B	SSDA SUBMISSION	MB	DJ	21.10.08
A	DRAFT SSDA SUBMISSION	MB	DJ	21.09.24

*Registered Architect
DHI Diane H Jones NSW Arch 4778

Consultants

Client
 Education

Architect
PTW Architects Level 11, 88 Phillip Street Sydney NSW 2000 Australia T +61 2 9232 5877 ptw.com.au
<small>Peddie Thorp & Walker P/L ABN 23 000 454 624 Trading as PTW Architects</small>
<small>NSW Nominated Architects S Parsons Architects No 6098 D Jones Architect No 4778</small>



05102030m

As indicated@ A1

Project PA030470

Status SSDA SUBMISSION

John Palmer Public School
85 The Ponds Blvd, The Ponds NSW 2769

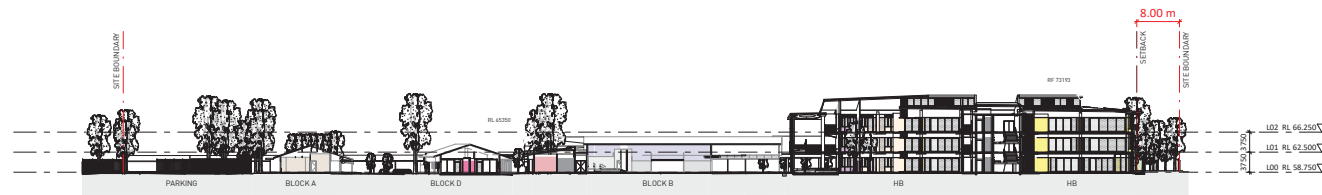
SSDA

SITE PLAN - ROOF

Drawing Number DA-AR-0023

Revision B





1 SECTION A
1:500 @A1



2 SECTION B
1:500 @A1

NSW GOVERNMENT

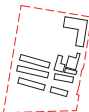
Department of Planning and Environment

Issued under the Environmental Planning and Assessment Act 1979

Application No: SSD-23330227 Signed: JC

Granted on: 20 May 2022 Sheet no: 7 of 49

Key Plan:



Drawing Disclaimer:

Do not scale from drawings.
Verify all dimensions on site before commencing work.
Copying or reproduction of this drawing is strictly prohibited without the consent of PTW Architects

Note

PTW takes no responsibility for external building elements. Anything connected with any design, materials selection, construction or installation of any cladding, facade or external building element must be checked by and remains the responsibility of others, including suitably qualified experts as may be required.

Rev	Amendment	By	Chk*	Date
B	SSDA SUBMISSION	MB	DJ	21.10.08
A	DRAFT SSDA SUBMISSION	MB	DJ	21.09.24

*Registered Architect
DHJ Diane H Jones NSW Arch 4778

Consultants

Client



Education

Architect
PTW Architects
Level 11, 88 Phillip Street
Sydney NSW 2000 Australia
T +61 2 9232 5877
ptw.com.au

Peddie Thorp & Walker P/L
ABN 23 000 454 624
Trading as PTW Architects
NSW Nominated Architects
5 Parsons Architects No 6098
D Jones Architect No 4778

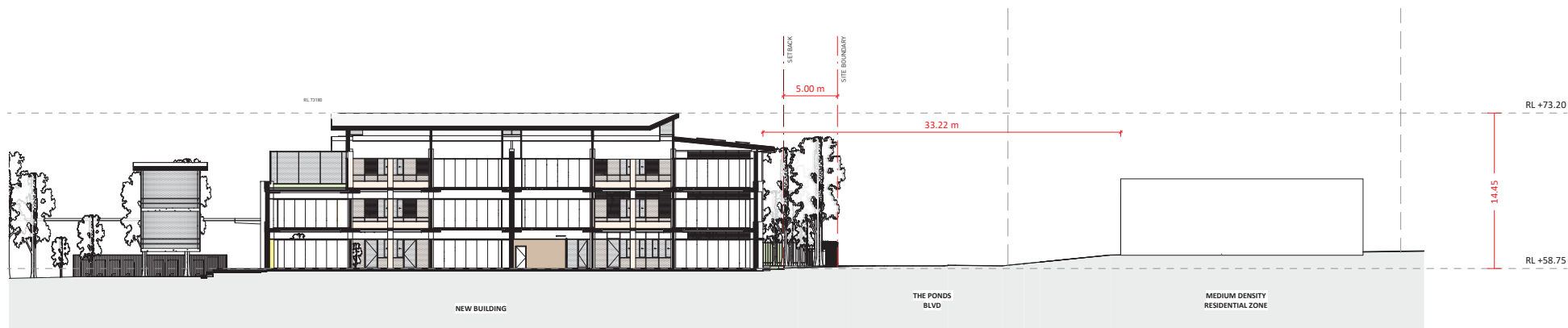


0 5 10 20 40 60m
1:500 @ A1
Project PA030470
John Palmer Public School
85 The Ponds Blvd, The Ponds NSW 2769
Status
SSDA SUBMISSION

Title	Drawing Number	Revision
SSDA	DA-AR-0301	B



1 SECTION THROUGH THE NORTHERN WING
1: 500 @A1



2 SECTION THROUGH ROAD THE NORTHERN WING
1: 200 @A1



Department of Planning
and Environment

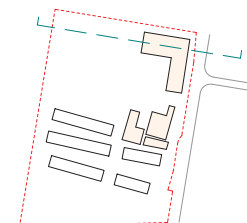
Issued under the Environmental Planning and Assessment Act 1979

Application No: SSD-23330227

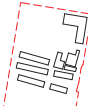
Signed: JC

Granted on: 20 May 2022

Sheet no: 8 of 49



Key Plan:



Drawing Disclaimer:

Do not scale from drawings.
Verify all dimensions on site before commencing work.
Copying or reproduction of this drawing is strictly
prohibited without the consent of PTW Architects

Note

PTW takes no responsibility for external building
elements. Anything connected with any design, materials
selection, construction or installation of any cladding,
facade or external building element must be checked by
and remains the responsibility of others, including
suitably qualified experts as may be required.

Rev	Amendment	By	Chk*	Date
B	SSDA SUBMISSION	MB	DJ	21/05/22
A	DRAFT SSDA SUBMISSION	MB	DJ	21/05/22

*Registered Architect
DHJ Diane H Jones NSW Arch 4778

Consultants

Client



Education

Architect
PTW Architects
Level 11, 88 Phillip Street
Sydney NSW 2000 Australia
T +61 2 9232 5877
ptw.com.au

Peddie Thorp & Walker P/L
ABN 23 000 454 624
Trading as PTW Architects
NSW Nominated Architects
5 Parsons Architect No 5098
D Jones Architect No 4778



As @ A1
Indicated
Project PA030470

John Palmer Public School
85 The Ponds Blvd, The Ponds NSW 2769

Status
SSDA SUBMISSION

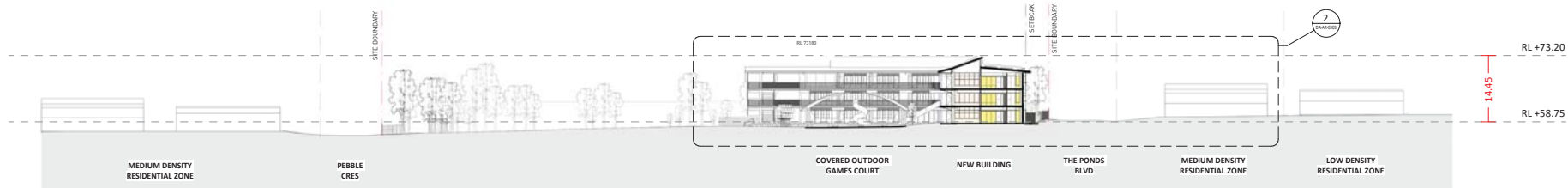
Title
SSDA
SITE SECTIONS

Drawing Number
DA-AR-0302

Revision
B

10/12/2022 8:26:26 PM

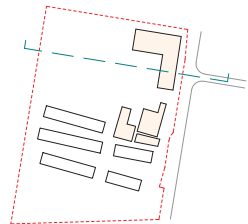
C:\New_Locals\PA030470_School\PTW_A1_A1_Site_Plan.dwg



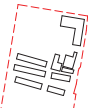
1 SECTION THROUGH THE SOUTHERN WING
1 : 500 @ A1



2 SECTION THROUGH ROAD AND THE SOUTHERN WING
1 : 200 @ A1



Key Plan:



Drawing Disclaimer:
Do not scale from drawings.
Verify all dimensions on site before commencing work.
Copying or reproduction of this drawing is strictly prohibited without the consent of PTW Architects.

Note:
PTW takes no responsibility for external building elements. Anything connected with any design, materials selection, construction or installation of any cladding, facade or external building element must be checked by and remains the responsibility of others, including suitably qualified experts as may be required.

Rev	Amendment	By	Chk*	Date
B	SSDA SUBMISSION	MB	DJ	211008
A	DRAFT SSDA SUBMISSION	MB	DJ	210924

*Registered Architect
DHJ Diane H Jones NSW Arch 4778

Consultants

Client



Education

Architect
PTW Architects
Level 11, 88 Phillip Street
Sydney NSW 2000 Australia
T +61 2 9232 5877
ptw.com.au

Peddie Thorp & Walker P/L
ABN 23 000 454 624
Trading as PTW Architects

NSW Nominated Architects
S Parsons Architects No 6098
D Jones Architect No 4778



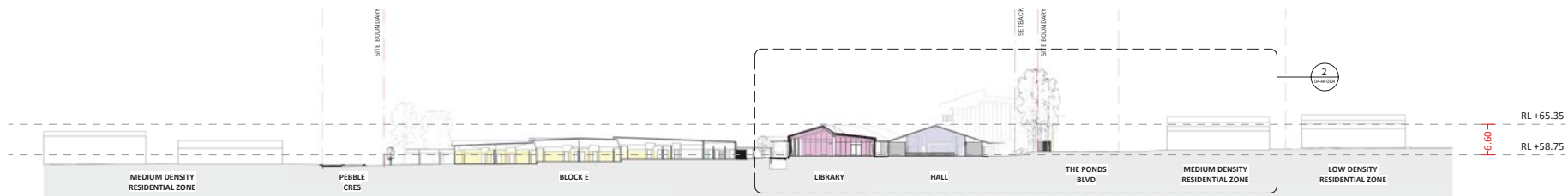
John Palmer Public School
85 The Ponds Blvd, The Ponds NSW 2769

SSDA SUBMISSION

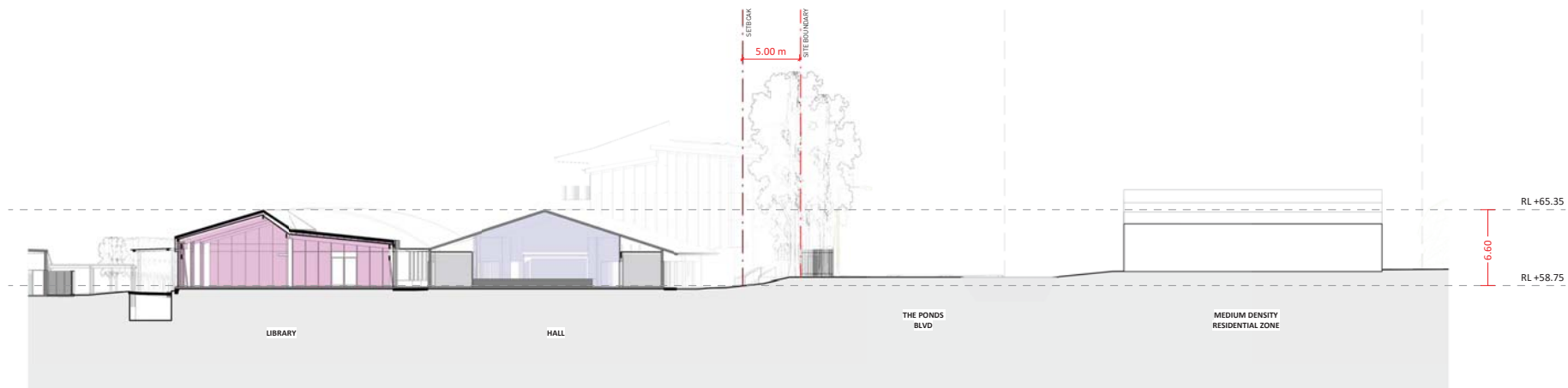
Title
SSDA
SITE SECTIONS

Drawing Number
DA-AR-0303

Revision
B



1 SECTION THROUGH THE LIBRARY AND HALL
1 : 500 @A1



2 SECTION THROUGH ROAD AND THE LIBRARY
1 : 200 @A1



Department of Planning
and Environment

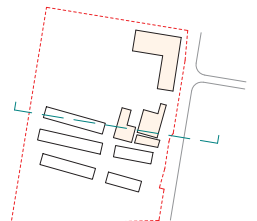
Issued under the Environmental Planning and Assessment Act 1979

Application No: SSD-23330227

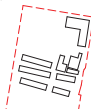
Signed: JC

Granted on: 20 May 2022

Sheet no: 10 of 49



Key Plan:



Drawing Disclaimer:

Do not scale from drawings.
Verify all dimensions on site before commencing work.
Copying or reproduction of this drawing is strictly
prohibited without the consent of PTW Architects

Note

PTW takes no responsibility for external building
elements. Anything connected with any design, materials
selection, construction or installation of any cladding,
facade or external building element must be checked by
and remains the responsibility of others, including
suitably qualified experts as may be required.

Rev	Amendment	By	Chk*	Date
B	SSDA SUBMISSION	MB	DJ	21/10/20
A	DRAFT SSDA SUBMISSION	MB	DJ	21/09/24

*Registered Architect
DHI Diane H Jones NSW Arch 4778

Consultants

Client



Education

Architect
PTW Architects
Level 11, 88 Phillip Street
Sydney NSW 2000 Australia
T +61 2 9232 5877
ptw.com.au

Peddie Thorp & Walker P/L
ABN 23 000 454 624
Trading as PTW Architects
NSW Nominated Architects
S Parsons Architects No 6098
D Jones Architect No 4778

PTW

At
indicated
Project PA030470

John Palmer Public School
85 The Ponds Blvd, The Ponds NSW 2769

Status
SSDA SUBMISSION

Title
SSDA
SITE SECTIONS

Drawing Number
DA-AR-0304

Revision
B