



Artist impression of a completed learning space

# Jindabyne Education Campus

## Planning update

March 2021

### Investing in our schools

The NSW Government is investing \$7 billion over the next four years, continuing its program to deliver more than 200 new and upgraded schools to support communities across NSW. This is the largest investment in public education infrastructure in the history of NSW.

The NSW Department of Education is committed to delivering new and upgraded schools for communities across NSW. The delivery of these important projects is essential to the future learning needs of our students and supports growth in the local economy.

### Project overview

We are currently undertaking planning for a new education campus at Jindabyne, building a new primary and high school in the Special Activation Precinct. Once complete, students and staff from the Jindabyne Central School will come together to form a new student population at the Jindabyne education campus. Once the transition is complete the existing school site will cease to operate.

### Progress summary and next steps

We are progressing the master plans for the education campus and design work is continuing. The project will need to go through a statutory approvals process.

We have now submitted a request for Secretary's Environmental Assessment Requirements (SEARS) for the project. This is the first step in the planning approval process. The Department of Planning, Industry and Environment (DPIE) will assess the project and advise which studies need to be included as part of the Environmental Impact Statement (EIS).

When the project is placed on public exhibition, the community and stakeholders can formally provide comments. Construction work can start after the development application is approved.

### How can I get involved?

We are committed to working together with our school communities and other stakeholders to deliver the best possible learning facilities for students. Your feedback on this project is important to us.

In December 2020, School Infrastructure NSW (SINSW) engaged with the local community to share feedback on the proposal at information sessions and through a survey.

Thank you to the 68 people who completed the survey. See below a summary of what you told us.

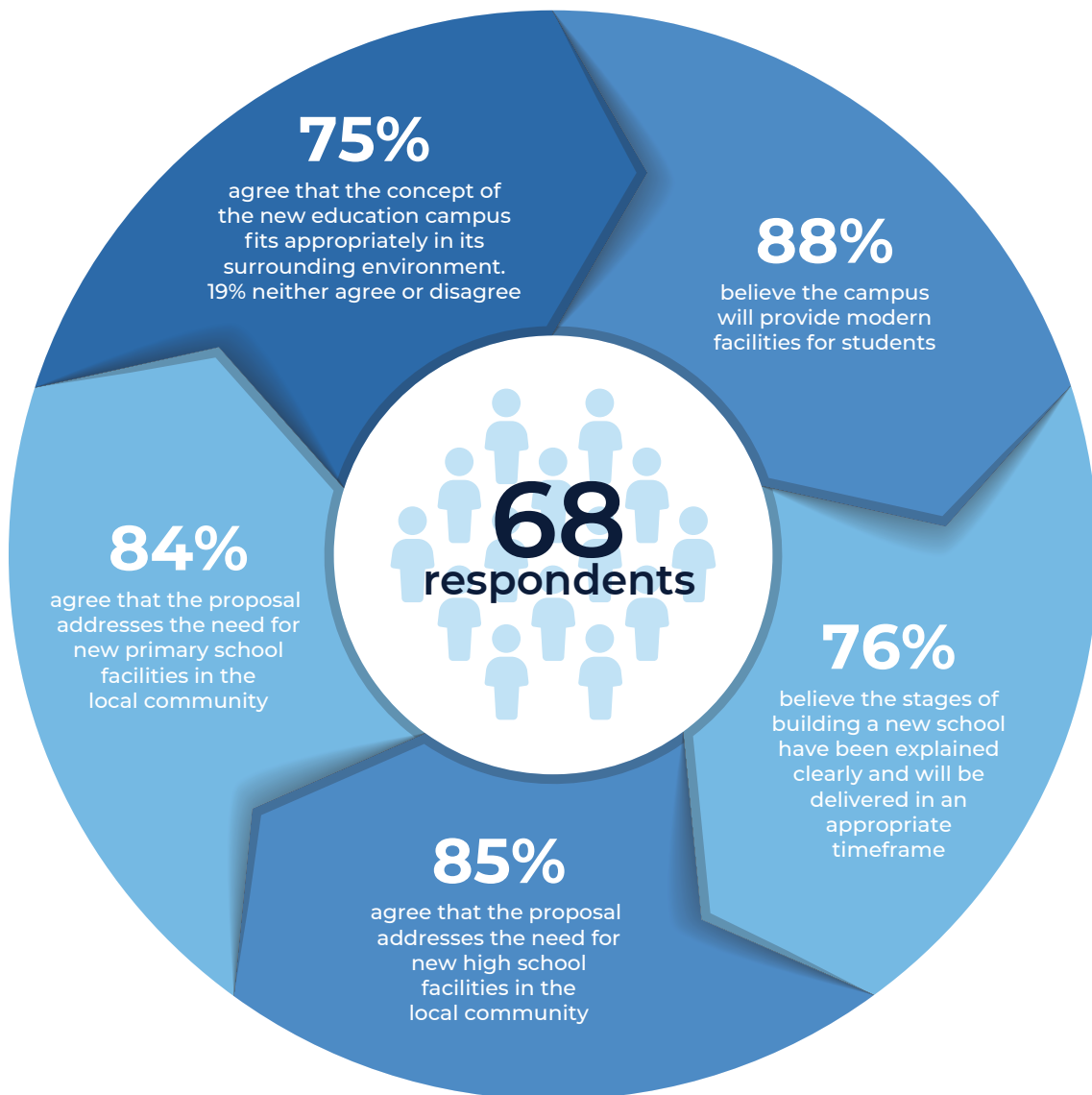
Please stay up to date through school newsletters and the School Infrastructure NSW website.

### For more information contact:

School Infrastructure NSW  
Email: [schoolinfrastructure@det.nsw.edu.au](mailto:schoolinfrastructure@det.nsw.edu.au)  
Phone: 1300 482 651  
[www.schoolinfrastructure.nsw.gov.au](http://www.schoolinfrastructure.nsw.gov.au)

### Here's a summary of what you told us in December

At the Community Information Hub, which was open from Tuesday 8 to Friday 11 December, we conducted an in-hub survey. The survey received 68 responses.



**94%** of respondents believe the new education campus will benefit the local community

**For more information contact:**

School Infrastructure NSW  
Email: [schoolinfrastructure@det.nsw.edu.au](mailto:schoolinfrastructure@det.nsw.edu.au)  
Phone: 1300 482 651  
[www.schoolinfrastructure.nsw.gov.au](http://www.schoolinfrastructure.nsw.gov.au)

