

Project overview

A new primary school and high school are being planned for Jindabyne as part of the Special Activation Precinct, also known as the SAP.

The Jindabyne Education Campus will include:

High School:

 26 teaching spaces	 3 support spaces	
 Multi-use spaces	 A sports field and sports courts	
 A gym	 A library	 Agriculture Unit

Primary School:

 20 teaching spaces	 2 support spaces
 Small sports field and playground	 A sports court
 Administration area and hall	 A library

There will be a shared central plaza and amphitheatre for use by both schools.

Jindabyne Education Campus

For more information phone: 1300 482 651
Email: schoolinfrastructure@det.nsw.edu.au



View of school entry

Jindabyne Education Campus

For more information phone: 1300 482 651
Email: schoolinfrastructure@det.nsw.edu.au



View from the amphitheatre looking to the entry

Jindabyne Education Campus

For more information phone: 1300 482 651
Email: schoolinfrastructure@det.nsw.edu.au



High School outdoor area

Jindabyne Education Campus

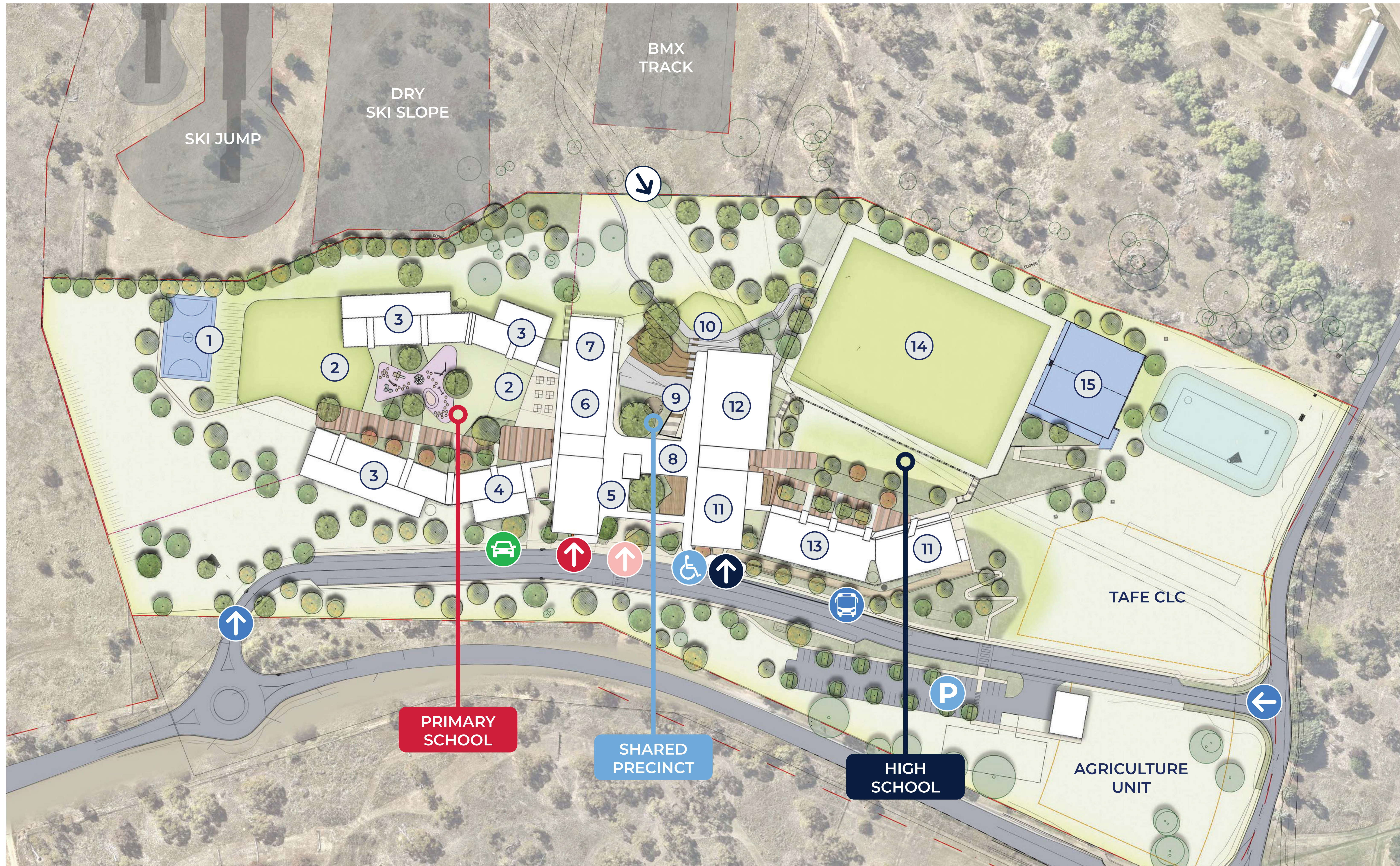
For more information phone: 1300 482 651
Email: schoolinfrastructure@det.nsw.edu.au



Primary School outdoor play area

Jindabyne Education Campus

For more information phone: 1300 482 651
Email: schoolinfrastructure@det.nsw.edu.au



LEGEND

- PS entry
- HS entry
- Visitor entry
- Site entry
- Active transport entry
- PS kiss and drop
- Coach drop off
- Staff and student parking
- Accessible parking
- PS court
- PS outdoor play
- PS general learning spaces
- PS support general learning spaces
- Admin (staff above)
- PS hall
- PS library (HS library above)
- Canteen
- Central Plaza
- Amphitheatre
- HS general learning spaces
- HS gym
- HS support general learning spaces
- HS field
- HS courts

Jindabyne Education Campus

For more information phone: 1300 482 651
 Email: schoolinfrastructure@det.nsw.edu.au