





DOCUMENT/STATUS REGISTER

Issue	Date	Purpose	Approved
P1	26.10.2022	PRELIMINARY ISSUE	IB
A	27.10.2022	FOR MOD 1 SSDA APPROVAL	IB
B	04.11.2022	FOR MOD 1 SSDA APPROVAL	IB
C	11.11.2022	FINAL MOD SUBMISSION FOR APPROVAL	IB
D	14.11.2022	FINAL MOD SUBMISSION FOR APPROVAL	IB
E	15.11.2022	FINAL MOD SUBMISSION FOR APPROVAL	IB

PROJECT DETAILS

Site Address	207 BARRY WAY, JINDABYNE
--------------	-----------------------------

Contents

1 INTRODUCTION

2 CHANGES TO DESIGN

3 CURRENT DESIGN DRAWINGS

- Landscape: Cover Sheet
- Landscape: Master Plan
- Landscape: Finishes Plan
- Landscape: Finishes Plan
- Landscape: Finishes Plan
- Landscape: Finishes Plan
- Landscape: Finishes Plan
- Landscape: Finishes Plan
- Landscape: Finishes Plan
- Landscape: Cross-sections
- Landscape: Cross-sections
- Landscape: Cross-sections
- Landscape: Existing Tree Study
- Landscape: Canopy Cover Plan



# 1.0 Introduction

The landscape design development of the Jindabyne Education Precinct is based on the SSDA Approved plans prepared by Site Image Landscape Architects.

Taylor Brammer Landscape Architects have been engaged by Hansen Yuncken to develop the concept designs to a detail documentation level for tendering and construction.

A design workshop was undertaken on 14th September 2022 to review the incumbent design. Working with Northrop Civil Engineers the site planning was improved to enable better access ability across the site. By lowering road entry road levels all parking areas become accessible and the relationship between road entry and buildings is “flattened” and improved. Buildings stay the same in extent and location.

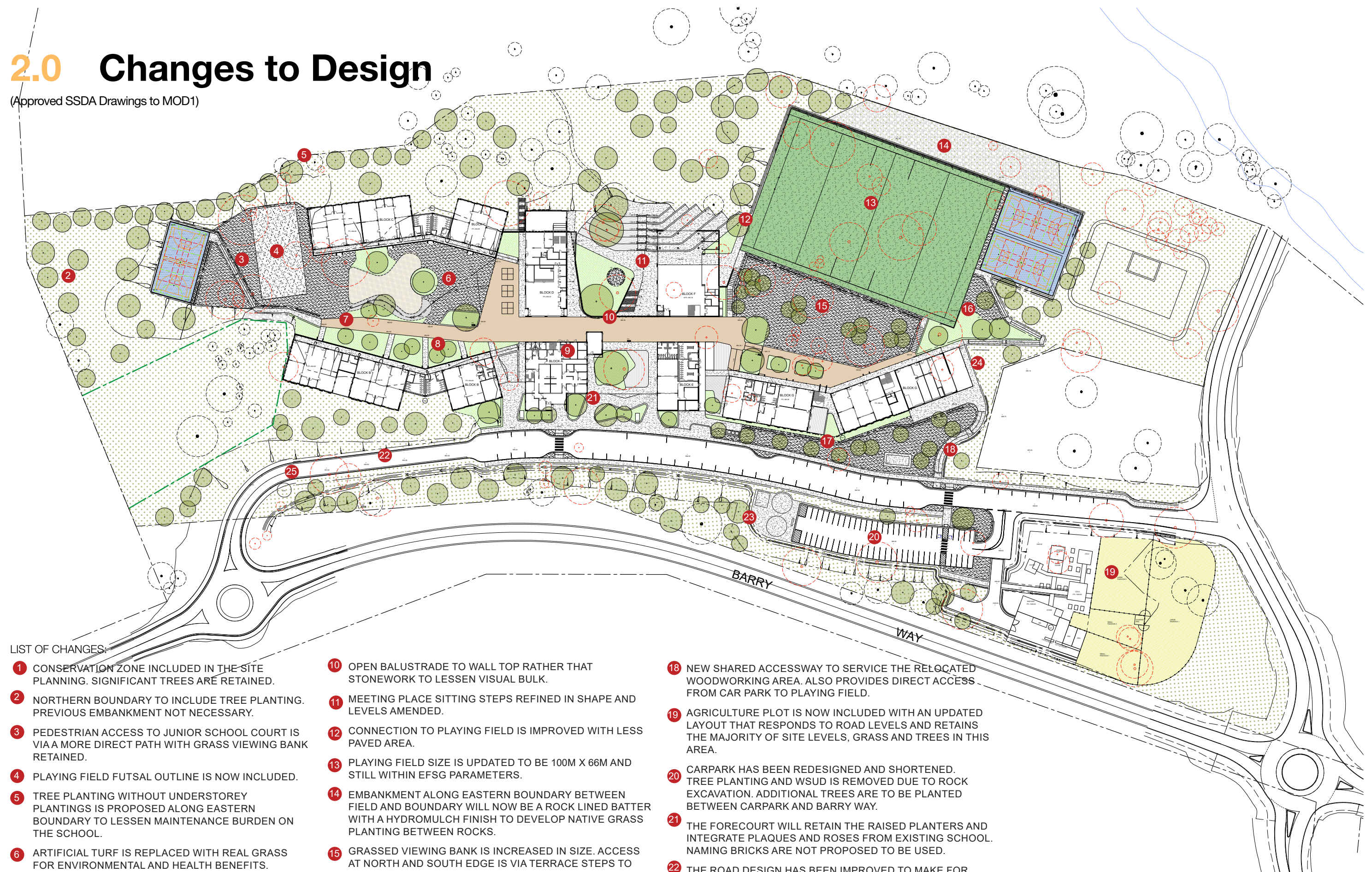
The landscape within the campus has been updated with the design refined. The landscape design intent has not changed.

Section 2.0 of this report shows the current landscape master plan and notes the overall design differences to the approved SSDA landscape document drawings. Section 3.0 of this report includes all of the updated landscape drawings that form part of this SSDA Mod 1.



# 2.0 Changes to Design

(Approved SSDA Drawings to MOD1)



## LIST OF CHANGES:

- 1 CONSERVATION ZONE INCLUDED IN THE SITE PLANNING. SIGNIFICANT TREES ARE RETAINED.
- 2 NORTHERN BOUNDARY TO INCLUDE TREE PLANTING. PREVIOUS EMBANKMENT NOT NECESSARY.
- 3 PEDESTRIAN ACCESS TO JUNIOR SCHOOL COURT IS VIA A MORE DIRECT PATH WITH GRASS VIEWING BANK RETAINED.
- 4 PLAYING FIELD FUTSAL OUTLINE IS NOW INCLUDED.
- 5 TREE PLANTING WITHOUT UNDERSTOREY PLANTINGS IS PROPOSED ALONG EASTERN BOUNDARY TO LESSEN MAINTENANCE BURDEN ON THE SCHOOL.
- 6 ARTIFICIAL TURF IS REPLACED WITH REAL GRASS FOR ENVIRONMENTAL AND HEALTH BENEFITS.
- 7 PEDESTRIAN SPINE IS REDUCED IN WIDTH TO DECREASE HEAT LOAD FROM LARGE AREAS OF PAVEMENT.
- 8 GROWING GARDENS ARE INCREASED IN SIZE.
- 9 THE PEDESTRIAN SPINE MATERIAL IS NOW IN A RANGE OF CONCRETE FINISHES. THE PROPOSED PAVING BRICKS ARE NOT EFSG COMPLIANT.
- 10 OPEN BALUSTRADE TO WALL TOP RATHER THAT STONework TO LESSEN VISUAL BULK.
- 11 MEETING PLACE SITTING STEPS REFINED IN SHAPE AND LEVELS AMENDED.
- 12 CONNECTION TO PLAYING FIELD IS IMPROVED WITH LESS PAVED AREA.
- 13 PLAYING FIELD SIZE IS UPDATED TO BE 100M X 66M AND STILL WITHIN EFSG PARAMETERS.
- 14 EMBANKMENT ALONG EASTERN BOUNDARY BETWEEN FIELD AND BOUNDARY WILL NOW BE A ROCK LINED BATTER WITH A HYDROMULCH FINISH TO DEVELOP NATIVE GRASS PLANTING BETWEEN ROCKS.
- 15 GRASSSED VIEWING BANK IS INCREASED IN SIZE. ACCESS AT NORTH AND SOUTH EDGE IS VIA TERRACE STEPS TO BETTER INTEGRATE WITH THE GRASSSED BANK. MASS PLANTING AREA TO TOP OF BANK IS REPLACED WITH ADDITIONAL TURF AND SHADE TREES.
- 16 PEDESTRIAN ACCESS BETWEEN SCHOOL AND FIELD IS SHORTENED AND IS NOW AS1428 COMPLIANT.
- 17 COMPACTED GRAVEL ACCESS PATH IS REMOVED AND REPLACED WITH TURF. GRAVEL PATH IS UNNECESSARY AND NON-COMPLIANT WITH EFSG.
- 18 NEW SHARED ACCESSWAY TO SERVICE THE RELOCATED WOODWORKING AREA. ALSO PROVIDES DIRECT ACCESS FROM CAR PARK TO PLAYING FIELD.
- 19 AGRICULTURE PLOT IS NOW INCLUDED WITH AN UPDATED LAYOUT THAT RESPONDS TO ROAD LEVELS AND RETAINS THE MAJORITY OF SITE LEVELS, GRASS AND TREES IN THIS AREA.
- 20 CARPARK HAS BEEN REDESIGNED AND SHORTENED. TREE PLANTING AND WSUD IS REMOVED DUE TO ROCK EXCAVATION. ADDITIONAL TREES ARE TO BE PLANTED BETWEEN CARPARK AND BARRY WAY.
- 21 THE FORECOURT WILL RETAIN THE RAISED PLANTERS AND INTEGRATE PLAQUES AND ROSES FROM EXISTING SCHOOL. NAMING BRICKS ARE NOT PROPOSED TO BE USED.
- 22 THE ROAD DESIGN HAS BEEN IMPROVED TO MAKE FOR ACCESSIBLE PEDESTRIAN MOVEMENT. ROAD AREA TO FRONT OF SCHOOL IS FLATTENED FOR BETTER ACCESS. BUILDING LEVELS ARE CHANGED TO RELATE TO EACH OTHER. QUANTITIES OF KISS AND DROP AND BUS SET DOWN DO NOT CHANGE.
- 23 FIRE FIGHTING WATER TANKS ADDED.
- 24 ADDITIONAL CLASS ROOMS ADDED AND WOOD WORK AREA MOVED SOUTH.
- 25 SIGNAGE LOCATION ADDED



## 3.0 Current Design drawings









AMENDMENTS			
REV	BY	DATE	DESCRIPTION
A	YP	27.10.2022	FOR MOD 1 SSDA APPROVAL
B	YP	04.11.2022	FOR MOD 1 SSDA APPROVAL
C	YP	11.11.2022	FINAL MOD SUBMISSION FOR APPROVAL
D	YP	14.11.2022	FINAL MOD SUBMISSION FOR APPROVAL
E	YP	15.11.2022	FINAL MOD SUBMISSION FOR APPROVAL



DRAWING NAME  
LANDSCAPE: MASTER PLAN

PROJECT  
JINDABYNE EDUCATION CAMPUS  
207 BARRY WAY, JINDABYNE

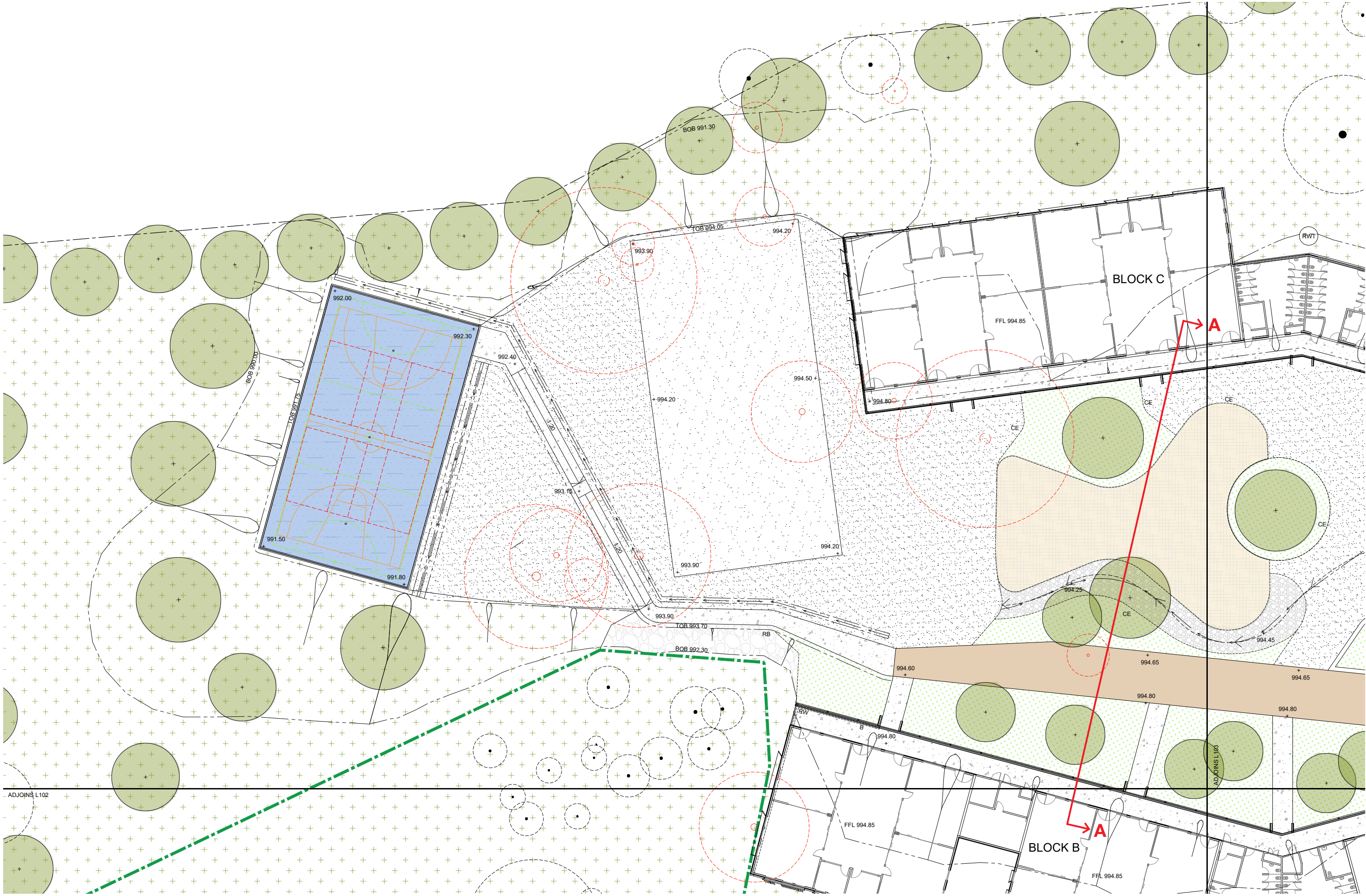
NORTH

SCALE 1 : 750 @ A1

15 NOVEMBER 2022

PROJECT	DISCIPLINE	PHASE	SERIES NUMBER	REVISION
JEC - LA - SSDA - L100				E






AMENDMENTS			
REV	BY	DATE	DESCRIPTION
A	YP	27.10.2022	FOR MOD 1 SSDA APPROVAL
B	YP	04.11.2022	FOR MOD 1 SSDA APPROVAL
C	YP	11.11.2022	FINAL MOD SUBMISSION FOR APPROVAL
D	YP	14.11.2022	FINAL MOD SUBMISSION FOR APPROVAL
E	YP	15.11.2022	FINAL MOD SUBMISSION FOR APPROVAL


**HANSEN YUNCKEN**  

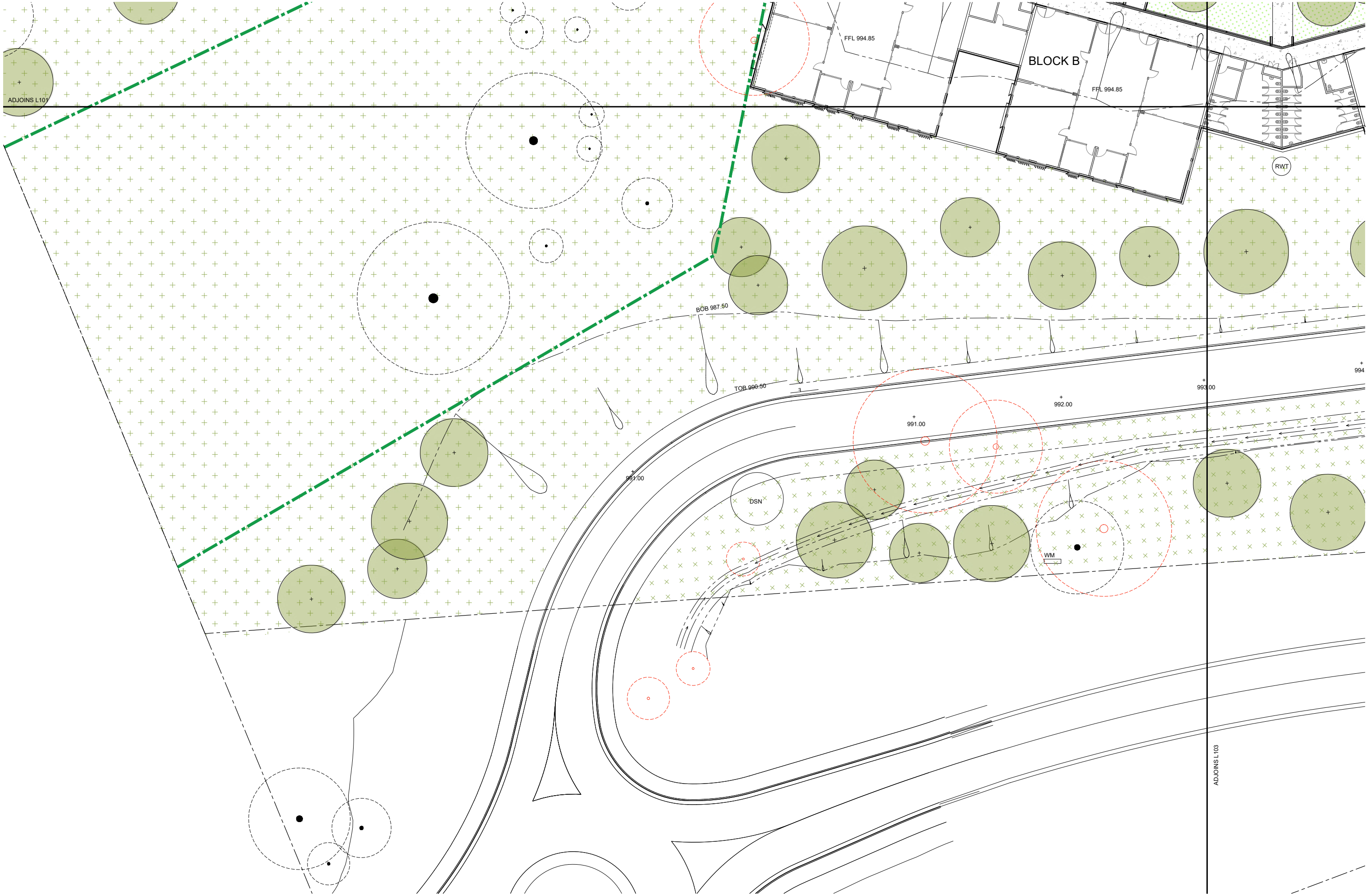

**TaylorBrammer**  
TAYLOR BRAMMER LANDSCAPE ARCHITECTS PTY LTD  
AUSTINER STUDIO  
20 Moore St PO Box 2004 Randwick NSW 1512  
Copyright © Taylor Brammer Landscape Architects Pty Ltd

DRAWING NAME  
**LANDSCAPE: FINISHES PLAN**

PROJECT  
**JINDABYNE EDUCATION CAMPUS**  
207 BARRY WAY, JINDABYNE

**NORTH**  


  
SCALE 1:200 @ A1  
15 NOVEMBER 2022  
PROJECT DISCIPLINE PHASE SERIES NUMBER REVISION  
**JEC - LA - SSDA - L101** **E**



AMENDMENTS			
REV	BY	DATE	DESCRIPTION
A	YP	27.10.2022	FOR MOD 1 SSDA APPROVAL
B	YP	04.11.2022	FOR MOD 1 SSDA APPROVAL
C	YP	11.11.2022	FINAL MOD SUBMISSION FOR APPROVAL
D	YP	14.11.2022	FINAL MOD SUBMISSION FOR APPROVAL
E	YP	15.11.2022	FINAL MOD SUBMISSION FOR APPROVAL

**HANSEN YUNCKEN**

**TaylorBrammer**  
TAYLOR BRAMMER LANDSCAPE ARCHITECTS PTY LTD  
AUSTRALIAN STUDIO  
28 Moore St PO Box 2048 Randwick NSW 1512 E: info@taylorbrammer.com.au T: 61 2 9587 8820  
Copyright © Taylor Brammer Landscape Architects Pty Ltd 2020 01 2021 2022

DRAWING NAME  
**LANDSCAPE: FINISHES PLAN**

PROJECT  
**JINDABYNE EDUCATION CAMPUS**  
207 BARRY WAY, JINDABYNE

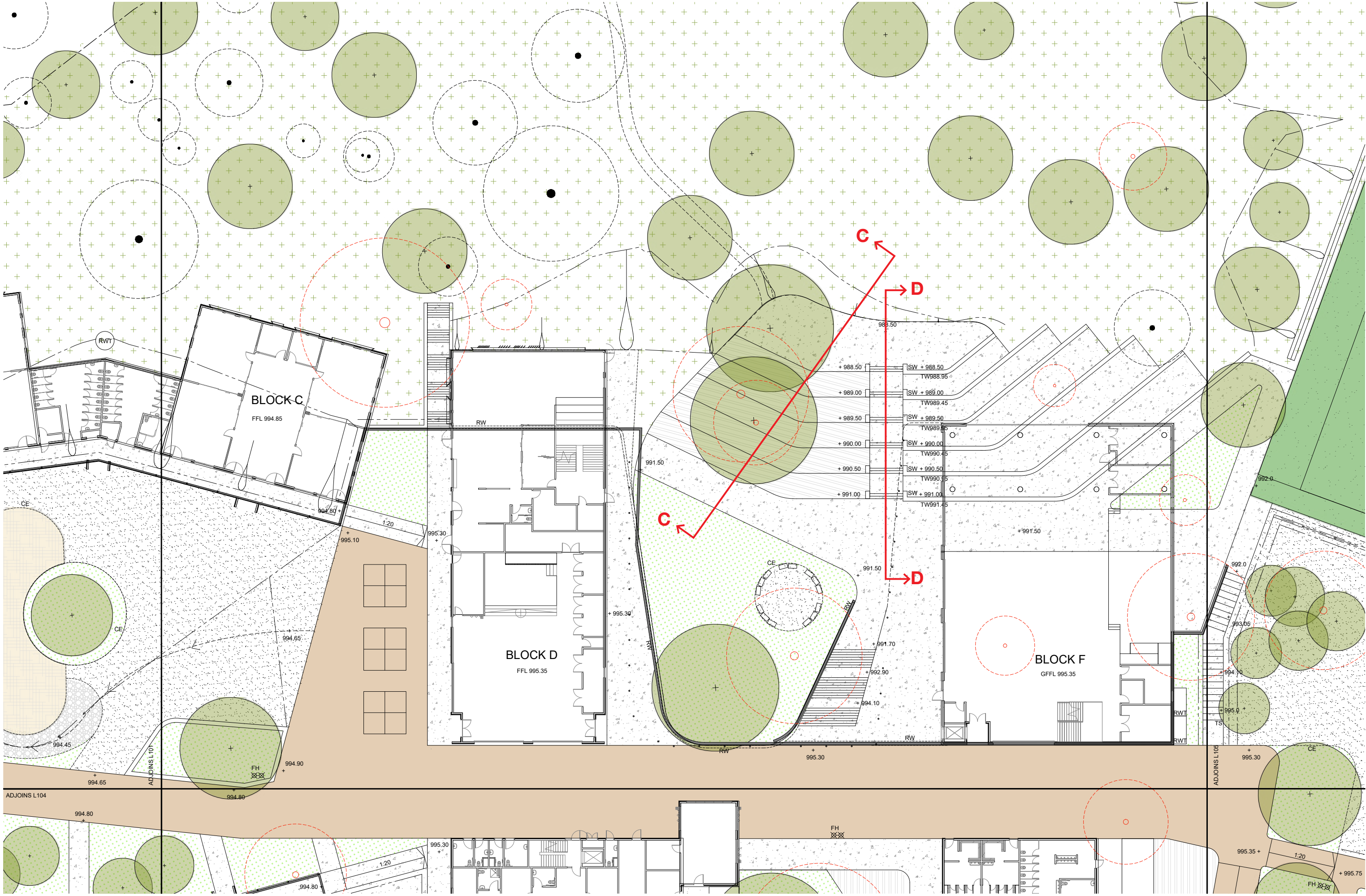
**JINDABYNE EDUCATION CAMPUS**  
207 BARRY WAY, JINDABYNE

NORTH

SCALE 1 : 200 @ A1  
15 NOVEMBER 2022

PROJECT	DISCIPLINE	PHASE	SERIES NUMBER	REVISION
JEC - LA - SSDA - L102				E





AMENDMENTS			
REV	BY	DATE	DESCRIPTION
A	YP	27.10.2022	FOR MOD 1 SSDA APPROVAL
B	YP	04.11.2022	FOR MOD 1 SSDA APPROVAL
C	YP	11.11.2022	FINAL MOD SUBMISSION FOR APPROVAL
D	YP	14.11.2022	FINAL MOD SUBMISSION FOR APPROVAL
E	YP	15.11.2022	FINAL MOD SUBMISSION FOR APPROVAL

**HANSEN YUNCKEN**  
  
NSW  
GOVERNMENT  
Education

**TaylorBrammer**  
TAYLOR BRAMMER LANDSCAPE ARCHITECTS PTY LTD  
AUSTRALIAN STUDIO  
20 Moore St PO Box 2004 Randwick NSW 1512  
Copyright © Taylor Brammer Landscape Architects Pty Ltd 2022


DRAWING NAME

LANDSCAPE: FINISHES PLAN

PROJECT

JINDABYNE EDUCATION CAMPUS  
207 BARRY WAY, JINDABYNE

NORTH



2000 4000 6000 8000 10000 20000

SCALE 1:200 @ A1

15 NOVEMBER 2022

PROJECT DISCIPLINE PHASE SERIES NUMBER REVISION

JEC - LA - SSDA - L103 E





AMENDMENTS		
REV	BY	DATE
A	YP	27.10.2022
B	YP	04.11.2022
C	YP	11.11.2022
D	YP	14.11.2022
E	YP	15.11.2022
DESCRIPTION		
FOR MOD 1 SSDA APPROVAL		
FOR MOD 1 SSDA APPROVAL		
FINAL MOD SUBMISSION FOR APPROVAL		
FINAL MOD SUBMISSION FOR APPROVAL		
FINAL MOD SUBMISSION FOR APPROVAL		

**HANSEN YUNCKEN**

**Taylor Brammer**  
TAYLOR BRAMMER LANDSCAPE ARCHITECTS PTY LTD  
AUSTRALIAN STUDIO  
20 Moore St PO Box 2048 Randwick NSW 1515  
Copyright © Taylor Brammer Landscape Architects Pty Ltd

DRAWING NAME  
**LANDSCAPE: FINISHES PLAN**

PROJECT  
**JINDABYNE EDUCATION CAMPUS**  
207 BARRY WAY, JINDABYNE

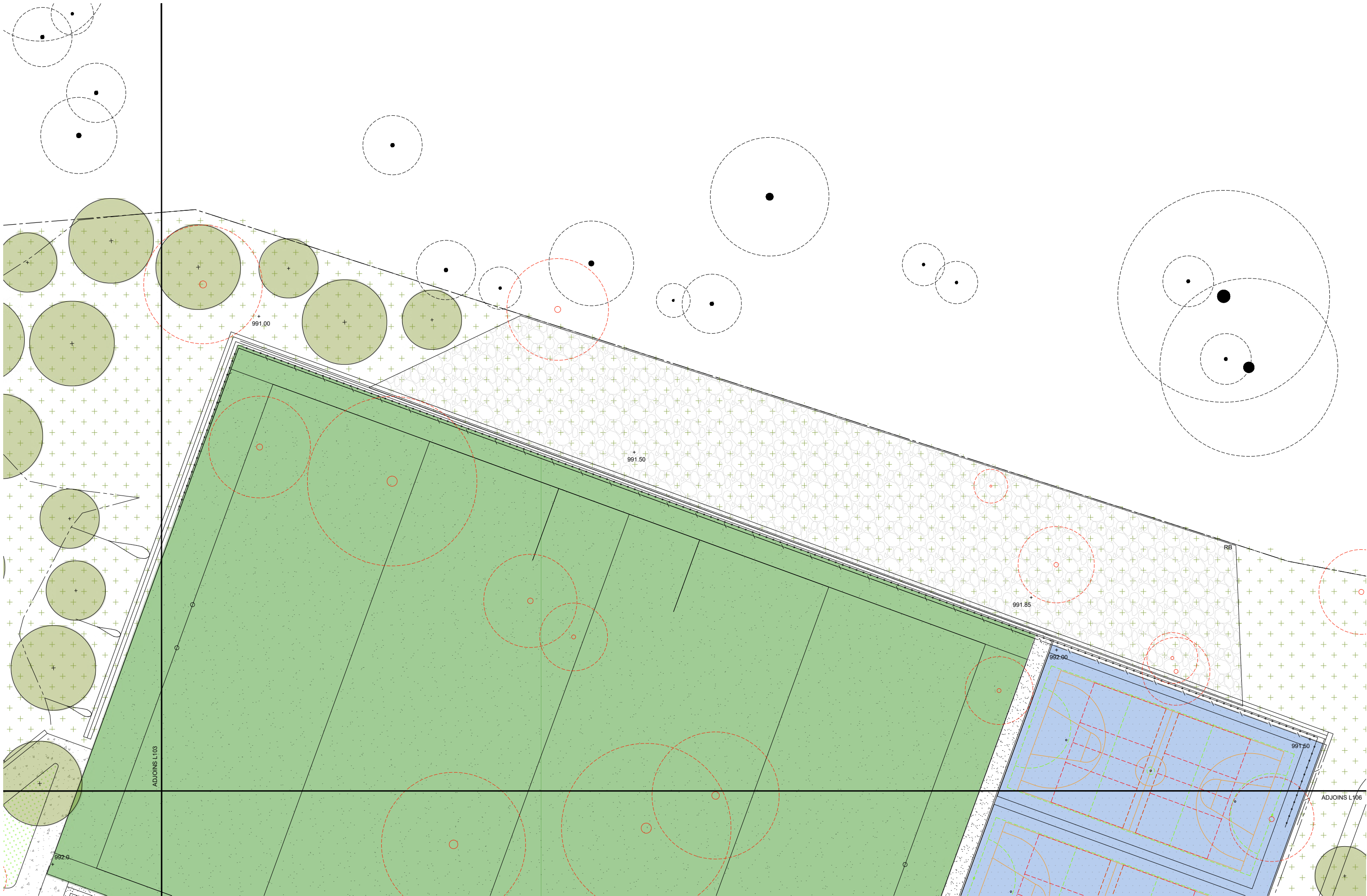
**NORTH**

SCALE 1:200 @ A1

PROJECT DISCIPLINE PHASE SERIES NUMBER REVISION

JEC - LA - SSDA - L104 E

15 NOVEMBER 2022



AMENDMENTS		
REV	BY	DATE
A	YP	27.10.2022
B	YP	04.11.2022
C	YP	11.11.2022
D	YP	14.11.2022
E	YP	15.11.2022

DESCRIPTION
FOR MOD 1 SSDA APPROVAL
FOR MOD 1 SSDA APPROVAL
FINAL MOD SUBMISSION FOR APPROVAL
FINAL MOD SUBMISSION FOR APPROVAL
FINAL MOD SUBMISSION FOR APPROVAL



TAYLOR BRAMMER LANDSCAPE ARCHITECTS PTY LTD  
AUSTRALIAN STUDIO  
20 Moore St PO Box 2004 Randwick NSW 1515  
Copyright © Taylor Brammer Landscape Architects Pty Ltd

DRAWING NAME  
**LANDSCAPE: FINISHES PLAN**

PROJECT  
**JINDABYNE EDUCATION CAMPUS**  
207 BARRY WAY, JINDABYNE

NORTH

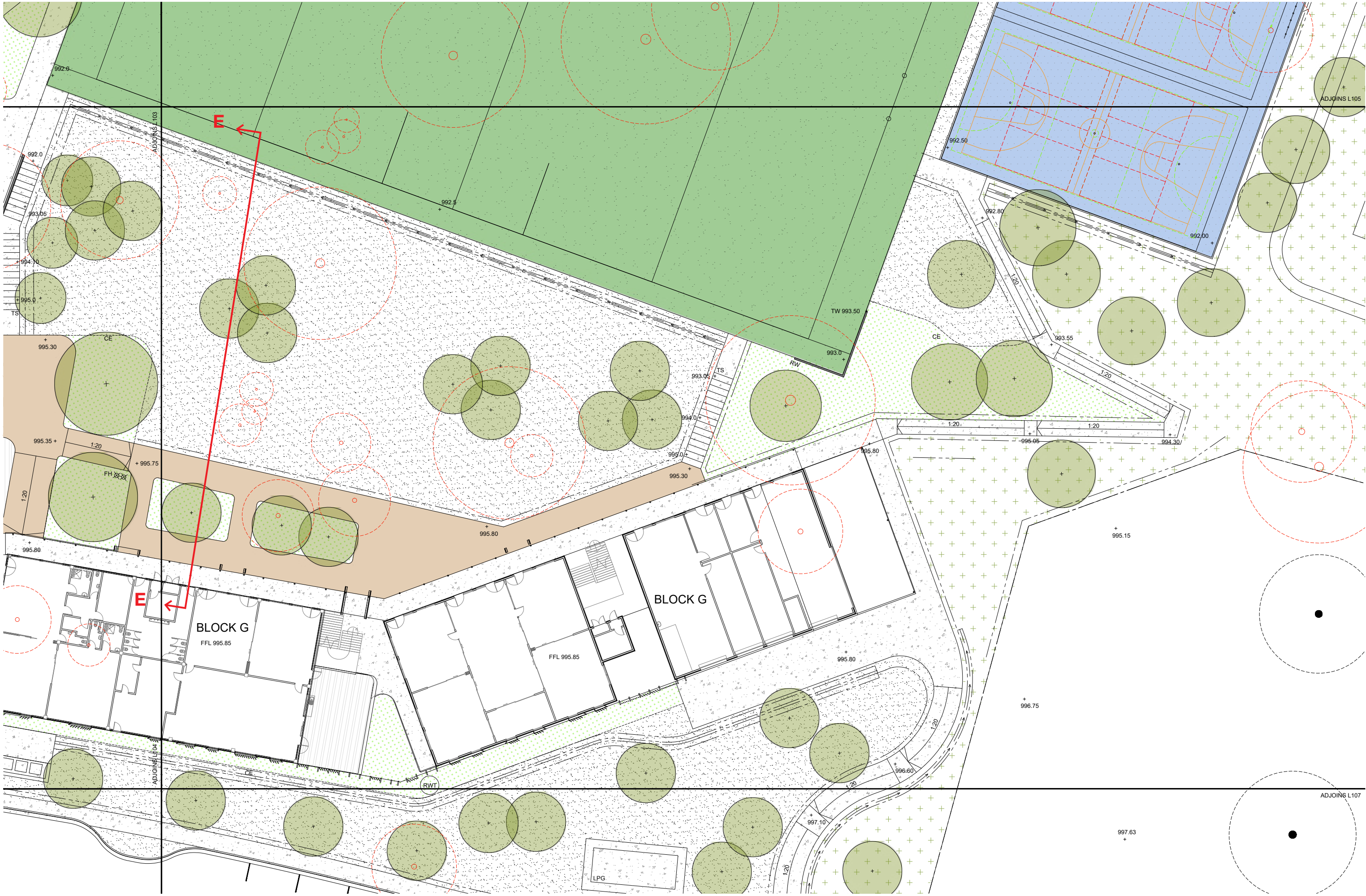
2000 4000 6000 8000 10000 20000

SCALE 1 : 200 @ A1

15 NOVEMBER 2022

PROJECT	DISCIPLINE	PHASE	SERIES NUMBER	REVISION
JEC - LA - SSDA - L105				E





AMENDMENTS		
REV	BY	DATE
A	YP	27.10.2022
B	YP	04.11.2022
C	YP	11.11.2022
D	YP	14.11.2022
E	YP	15.11.2022
DESCRIPTION		
FOR MOD 1 SSDA APPROVAL		
FOR MOD 1 SSDA APPROVAL		
FINAL MOD SUBMISSION FOR APPROVAL		
FINAL MOD SUBMISSION FOR APPROVAL		
FINAL MOD SUBMISSION FOR APPROVAL		

**HANSEN YUNCKEN**

**TaylorBrammer**

TAYLOR BRAMMER LANDSCAPE ARCHITECTS PTY LTD  
AUSTINER STUDIO  
20 Moore St PO Box 2004 Randwick NSW 1512  
Copyright © Taylor Brammer Landscape Architects Pty Ltd

DRAWING NAME  
**LANDSCAPE: FINISHES PLAN**

PROJECT  
**JINDABYNE EDUCATION CAMPUS**  
207 BARRY WAY, JINDABYNE

NORTH

2000 4000 6000 8000 10000 20000

SCALE 1 : 200 @ A1

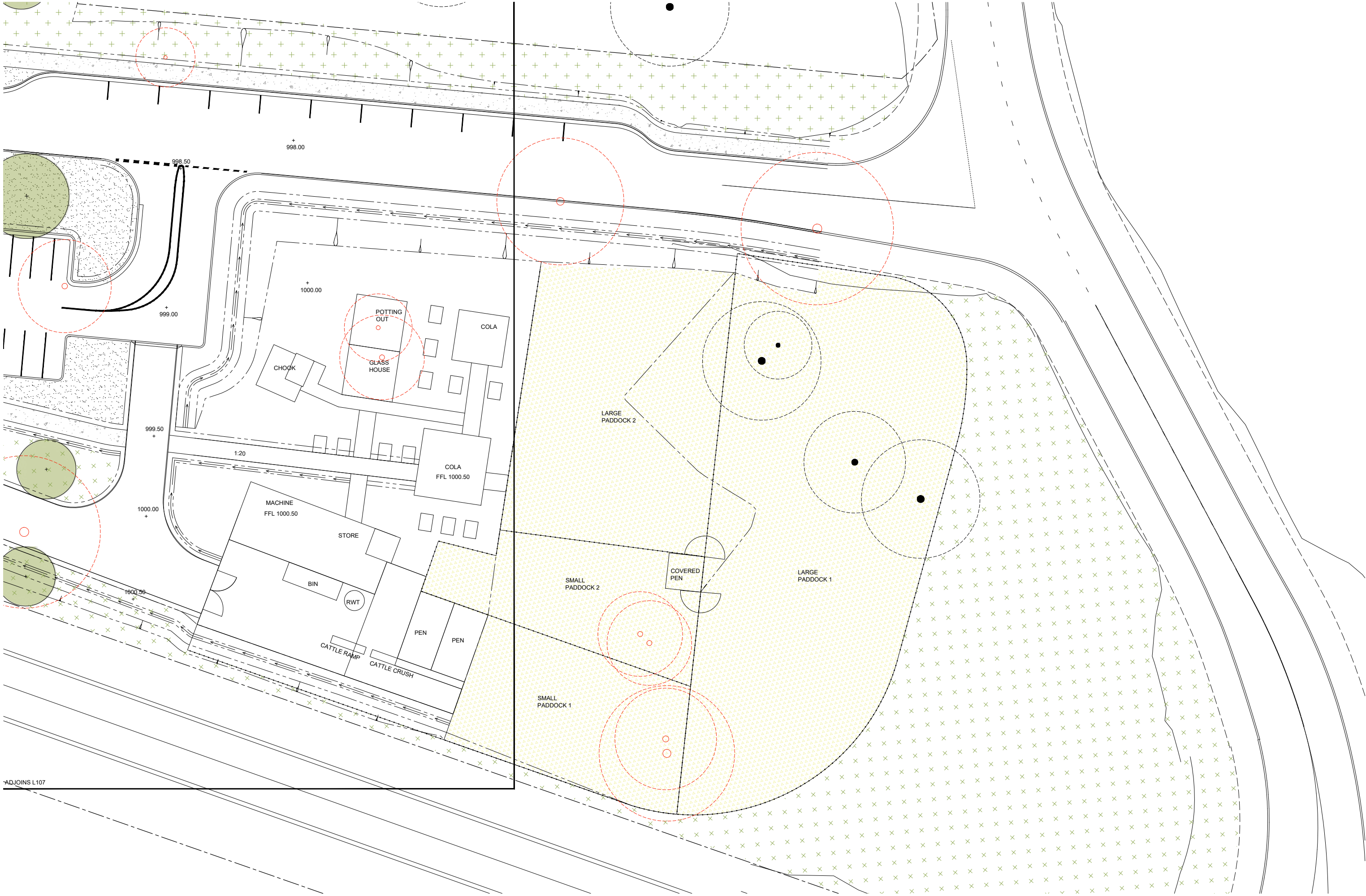
PROJECT DISCIPLINE PHASE SERIES NUMBER REVISION

JEC - LA - SSDA - L106 E









AMENDMENTS			
REV	BY	DATE	DESCRIPTION
A	YP	27.10.2022	FOR MOD 1 SSDA APPROVAL
B	YP	04.11.2022	FOR MOD 1 SSDA APPROVAL
C	YP	11.11.2022	FINAL MOD SUBMISSION FOR APPROVAL
D	YP	14.11.2022	FINAL MOD SUBMISSION FOR APPROVAL
E	YP	15.11.2022	FINAL MOD SUBMISSION FOR APPROVAL



**HANSEN YUNCKEN**

**Taylor Brammer**

TAYLOR BRAMMER LANDSCAPE ARCHITECTS PTY LTD  
AUSTRALIAN STUDIO  
20 Moore St PO Box 2004 Randwick NSW 1512  
Copyright © Taylor Brammer Landscape Architects Pty Ltd

DRAWING NAME

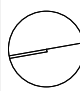
**LANDSCAPE: FINISHES PLAN**

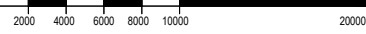
PROJECT

**JINDABYNE EDUCATION CAMPUS**

207 BARRY WAY, JINDABYNE

NORTH





SCALE 1:200 @ A1

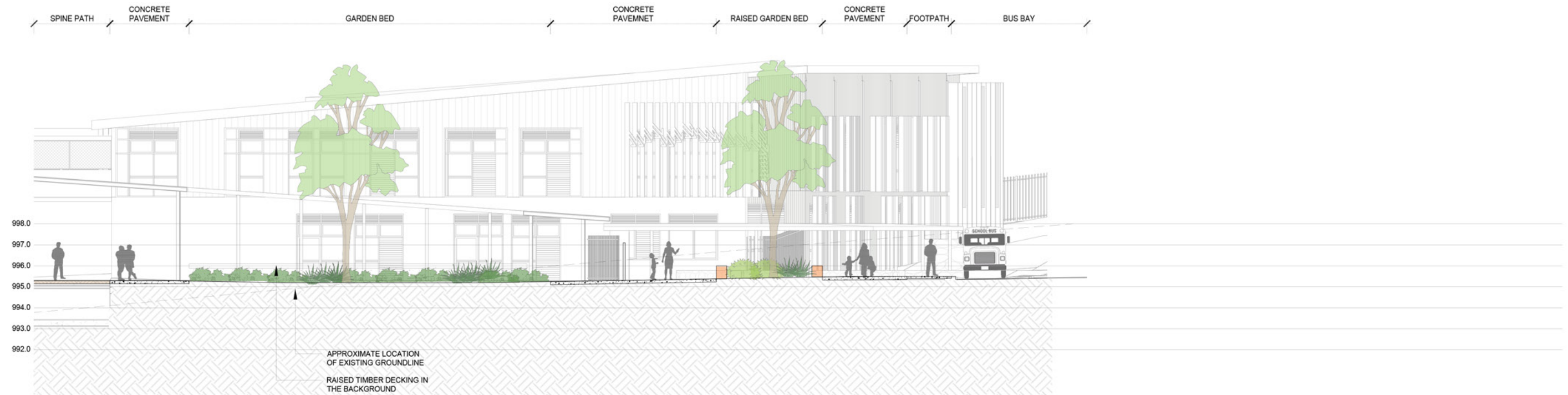
15 NOVEMBER 2022

PROJECT	DISCIPLINE	PHASE	SERIES NUMBER	REVISION
JEC - LA - SSDA - L108				E





SECTION AA - PRIMARY SCHOOL PLAYGROUND  
1:100 @ A1

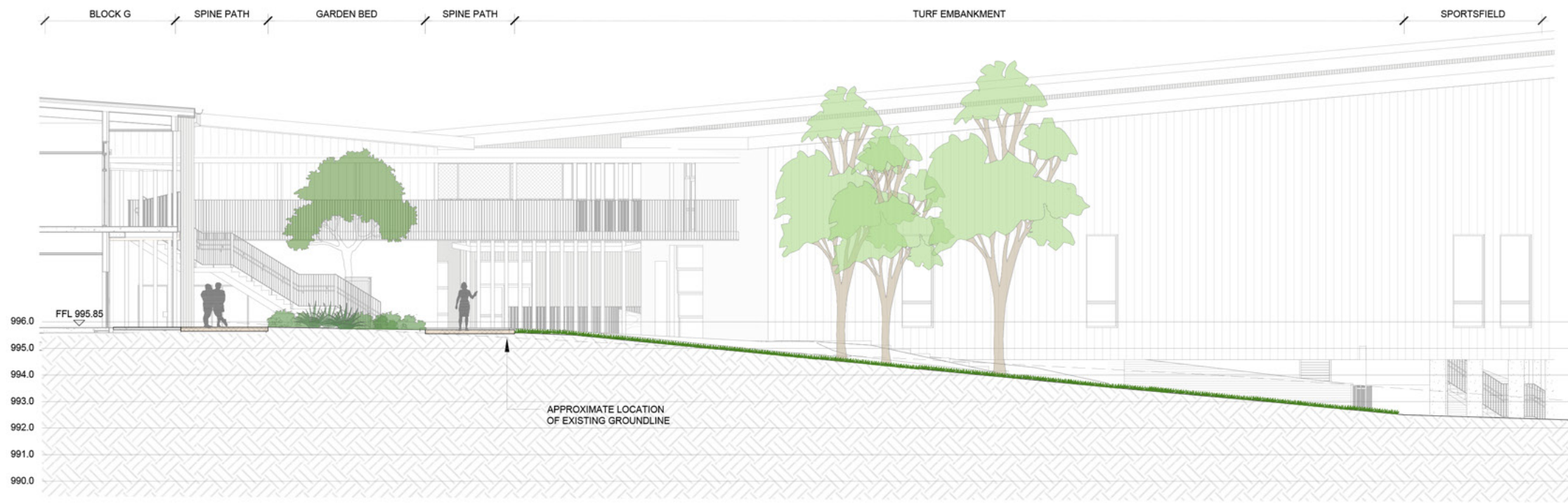


SECTION BB - CENTRAL ENTRY  
1:100 @ A1

REV	BY	DATE	DESCRIPTION
A	YP	27.10.2022	FOR MOD 1 SSDA APPROVAL
B	YP	04.11.2022	FOR MOD 1 SSDA APPROVAL
C	YP	11.11.2022	FINAL MOD SUBMISSION FOR APPROVAL
D	YP	14.11.2022	FINAL MOD SUBMISSION FOR APPROVAL
E	YP	15.11.2022	FINAL MOD SUBMISSION FOR APPROVAL



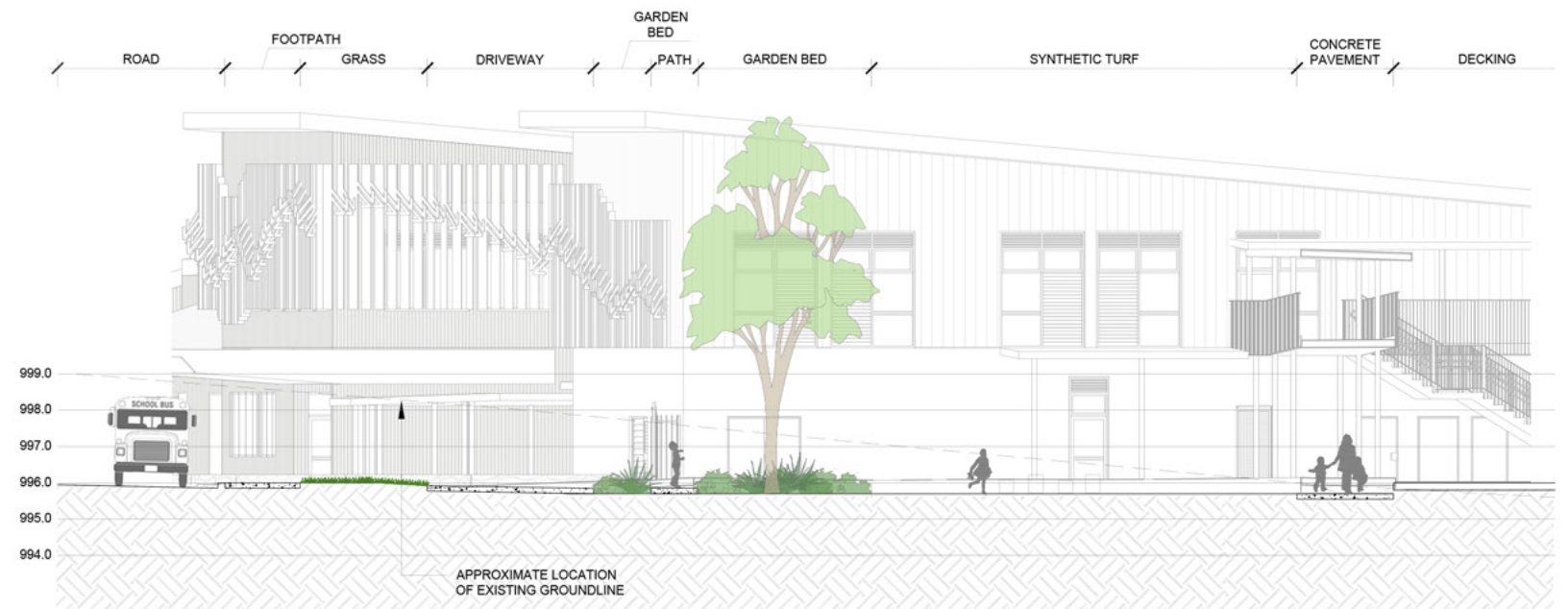




SECTION EE - SENIOR SCHOOL  
1:100 @ A1

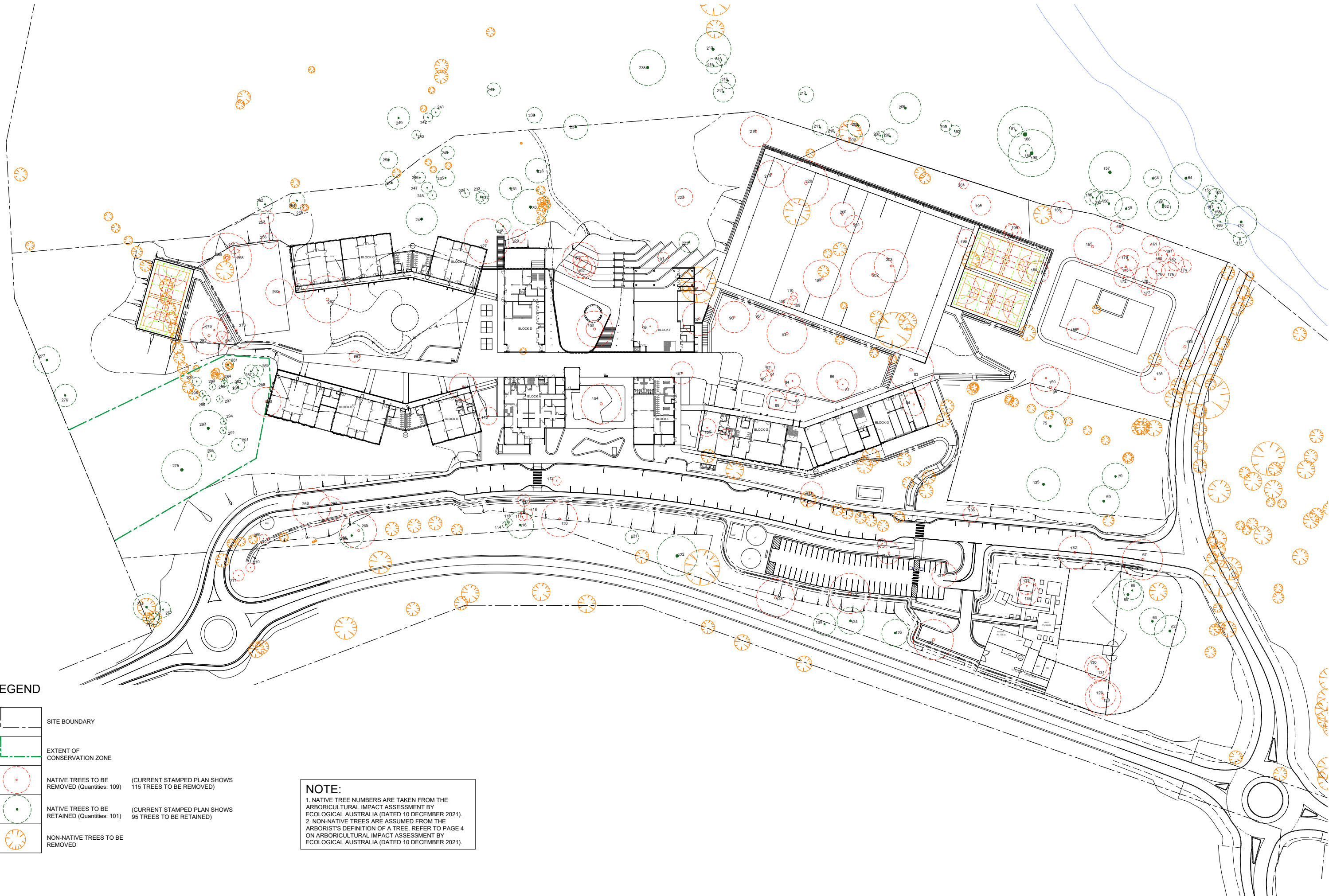


SECTION FF - SENIOR SCHOOL WINTER GARDEN  
1:100 @ A1



SECTION GG - SENIOR SCHOOL  
1:100 @ A1

REV	BY	DATE	DESCRIPTION
A	YP	27.10.2022	FOR MOD 1 SSDA APPROVAL
B	YP	04.11.2022	FOR MOD 1 SSDA APPROVAL
C	YP	11.11.2022	FINAL MOD SUBMISSION FOR APPROVAL
D	YP	14.11.2022	FINAL MOD SUBMISSION FOR APPROVAL
E	YP	15.11.2022	FINAL MOD SUBMISSION FOR APPROVAL



LEGEND

- SITE BOUNDARY
- EXTENT OF CONSERVATION ZONE
- NATIVE TREES TO BE REMOVED (Quantities: 109) (CURRENT STAMPED PLAN SHOWS 115 TREES TO BE REMOVED)
- NATIVE TREES TO BE RETAINED (Quantities: 101) (CURRENT STAMPED PLAN SHOWS 95 TREES TO BE RETAINED)
- NON-NATIVE TREES TO BE REMOVED

**NOTE:**  
1. NATIVE TREE NUMBERS ARE TAKEN FROM THE ARBORICULTURAL IMPACT ASSESSMENT BY ECOLOGICAL AUSTRALIA (DATED 10 DECEMBER 2021).  
2. NON-NATIVE TREES ARE ASSUMED FROM THE ARBORIST'S DEFINITION OF A TREE. REFER TO PAGE 4 ON ARBORICULTURAL IMPACT ASSESSMENT BY ECOLOGICAL AUSTRALIA (DATED 10 DECEMBER 2021).

AMENDMENTS			
REV	BY	DATE	DESCRIPTION
A	YP	27.10.2022	FOR MOD 1 SSDA APPROVAL
B	YP	04.11.2022	FOR MOD 1 SSDA APPROVAL
C	YP	11.11.2022	FINAL MOD SUBMISSION FOR APPROVAL
D	YP	14.11.2022	FINAL MOD SUBMISSION FOR APPROVAL
E	YP	15.11.2022	FINAL MOD SUBMISSION FOR APPROVAL

TaylorBrammer

TAYLOR BRAMMER LANDSCAPE ARCHITECTS PTY LTD

AUSTINER STUDIO

28 Moore St PO Box 2058 Adelaide, NSW, 2010. E: info@taylorbrammer.com.au T: 61 2 9597 8820

Copyright © Taylor Brammer Landscape Architects Pty Ltd. 2022

DRAWING NAME

LANDSCAPE: EXISTING TREE STUDY

PROJECT

JINDABYNE EDUCATION CAMPUS

207 BARRY WAY, JINDABYNE

NORTH

SCALE 1 : 750 @ A1

15 NOVEMBER 2022

PROJECT	DISCIPLINE	PHASE	SERIES NUMBER	REVISION
JEC - LA - SSDA - L300				E





LEGEND

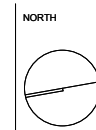
	SITE BOUNDARY
	EXTENT OF CONSERVATION ZONE
	NATIVE TREES TO BE REMOVED (Quantities: 109) (CURRENT STAMPED PLAN SHOWS 115 TREES TO BE REMOVED)
	NATIVE TREES TO BE RETAINED (Quantities: 101) (CURRENT STAMPED PLAN SHOWS 95 TREES TO BE RETAINED)
	PROPOSED TREE PLANTING

AMENDMENTS			
REV	BY	DATE	DESCRIPTION
A	YP	27.10.2022	FOR MOD 1 SSDA APPROVAL
B	YP	04.11.2022	FOR MOD 1 SSDA APPROVAL
C	YP	11.11.2022	FINAL MOD SUBMISSION FOR APPROVAL
D	YP	14.11.2022	FINAL MOD SUBMISSION FOR APPROVAL
E	YP	15.11.2022	FINAL MOD SUBMISSION FOR APPROVAL



DRAWING NAME  
LANDSCAPE: CANOPY COVER PLAN

PROJECT  
JINDABYNE EDUCATION CAMPUS  
207 BARRY WAY, JINDABYNE



7500 15000 22500 30000 37500 75000				
SCALE 1 : 750 @ A1				
15 NOVEMBER 2022				
PROJECT	DISCIPLINE	PHASE	SERIES NUMBER	REVISION
JEC - LA - SSDA - L301				E