



Artist impression of Irrawang High School upgrade (subject to change)

Irrawang High School upgrade

Project update | July 2023

Project overview

A project is underway to upgrade Irrawang High School to bring students the latest educational facilities and support the local community.

The project has moved into the delivery phase and, subject to planning approval, will deliver:

- new learning hub with 8 general learning spaces and 6 support learning spaces
- expansion and refurbishment of the library
- new school entry
- new support student drop-off / pick-up area.

Progress summary

The construction contract has been awarded to Richard Crookes Constructions. We will work with the contractor to further progress the detailed design and develop the program of works to deliver the Irrawang High School upgrade.

Two replacement demountable units were installed at the northern side of the school during the July school holidays. Two existing demountable units will be removed at a later date.

Next steps

- Development of detailed design
- Relocation of modular building Block L (the Return to School Centre)
- Determination of the development application by council.

Main works construction will begin once planning approval is received. Site establishment works to prepare for construction could begin at an earlier date, and the community will be notified if this is required.

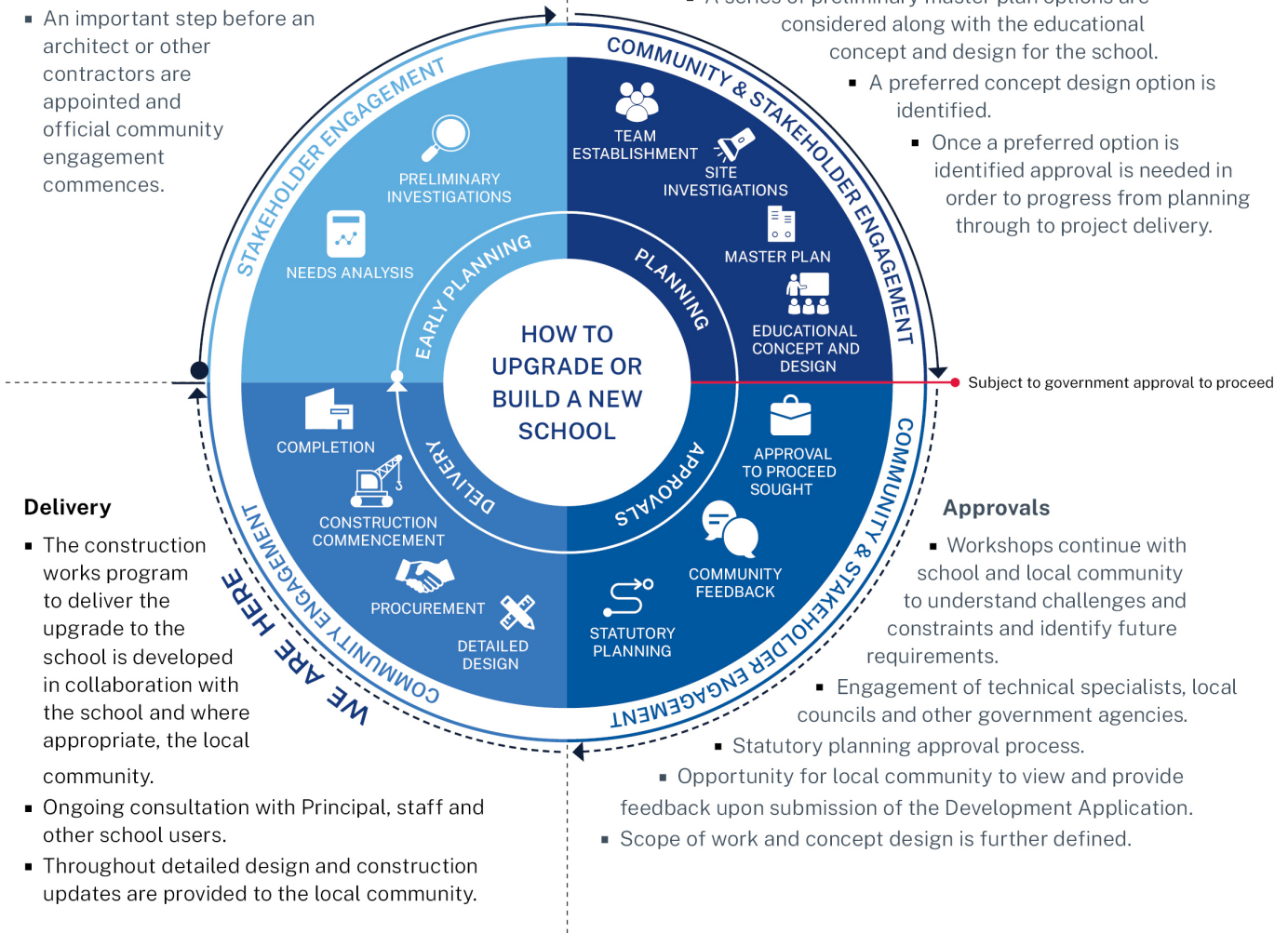
The information below takes you through the journey of upgrading or building a new school.

Early planning

- Consideration and studies of demographic trends, education requirements, the condition of the existing school buildings, catchment boundaries, heritage requirements, transport links and partnership opportunities.
- Doing so means that we:
 - consider the needs of the local area now and into the future.
 - ensure the right school is designed for the community.
- An important step before an architect or other contractors are appointed and official community engagement commences.

Planning

- Consultants such as architects and project managers are appointed.
- Investigation and review of site and development of master plan options.
- Master planning considers options for the general size, shape and form of buildings for a specific school site.
- A Project Reference Group (PRG) is established.
- Operational, educational and service delivery factors are understood and considered by the PRG.
 - A series of preliminary master plan options are considered along with the educational concept and design for the school.
 - A preferred concept design option is identified.
 - Once a preferred option is identified approval is needed in order to progress from planning through to project delivery.



Delivery

- The construction works program to deliver the upgrade to the school is developed in collaboration with the school and where appropriate, the local community.
- Ongoing consultation with Principal, staff and other school users.
- Throughout detailed design and construction updates are provided to the local community.

Approvals

- Workshops continue with school and local community to understand challenges and constraints and identify future requirements.
 - Engagement of technical specialists, local councils and other government agencies.
- Statutory planning approval process.
 - Opportunity for local community to view and provide feedback upon submission of the Development Application.
 - Scope of work and concept design is further defined.

Keep in touch

The School Infrastructure NSW (SINSW) website will continue to have up-to-date information about the Irrawang High School upgrade on the project page at <https://www.schoolinfrastructure.nsw.gov.au/projects/i/irrawang-high-school-upgrade.html>

Your feedback on this project is important to us. For more information, questions or to make a comment please email us at schoolinfrastructure@det.nsw.edu.au.