

Inner Sydney High School Works notification

September 2020

Night Works on Cleveland and Chalmers Street

Dear Neighbour,

We are building a new high school in the centre of Sydney. Inner Sydney High School is the result of the redevelopment of the Department of Education's site on the corner of Cleveland and Chalmers Streets in Surry Hills and construction of a new 14 storey high school building.

We are writing to inform you that as part of delivering the new school Aitken Civil Engineering will be carrying out works on both Cleveland and Chalmers Street.

Cleveland Street, Corner of Chalmers Street

The streetscape upgrade works on Cleveland Street will commence from Friday 4 September 2020 until approximately Saturday 3 October 2020. Day works are scheduled to commence on Friday 4 September 2020 with night works scheduled to start from Wednesday 9 September 2020.

Hours of work

Day Works: **7:00am to 5:00pm**

Night Works: **9:00pm to 5:00am.**

Surveying, tree protection and set out works for the footpath will be undertaken from Wednesday 2 September 2020.

Traffic changes during the night works will affect the kerb-side lane on Cleveland Street between Pitt Street and Chalmers Streets, with eastbound traffic reduced to one lane.

For more information contact:

School Infrastructure NSW
Level 8, 259 George Street, Sydney 2000 NSW
Email: schoolinfrastructure@det.nsw.edu.au
Phone: 1300 482 651
www.schoolinfrastructure.nsw.gov.au

Chalmers Street

Streetscape upgrade and storm water works will commence on Chalmers Street from Tuesday 8 September 2020 (Day Works) and Tuesday 15 September 2020 (Night Works) until approximately Saturday 31 October.

Traffic changes during the night works will affect the kerb-side lane on Chalmers Street, north of Cleveland Street, with northbound traffic reduced to two lanes.

Hours of work

Day Works: 7:00am to 5:00pm

Night Works: 9:00pm to 5:00am (work will only be undertaken Wednesday, Thursday, Saturday and Sunday nights)

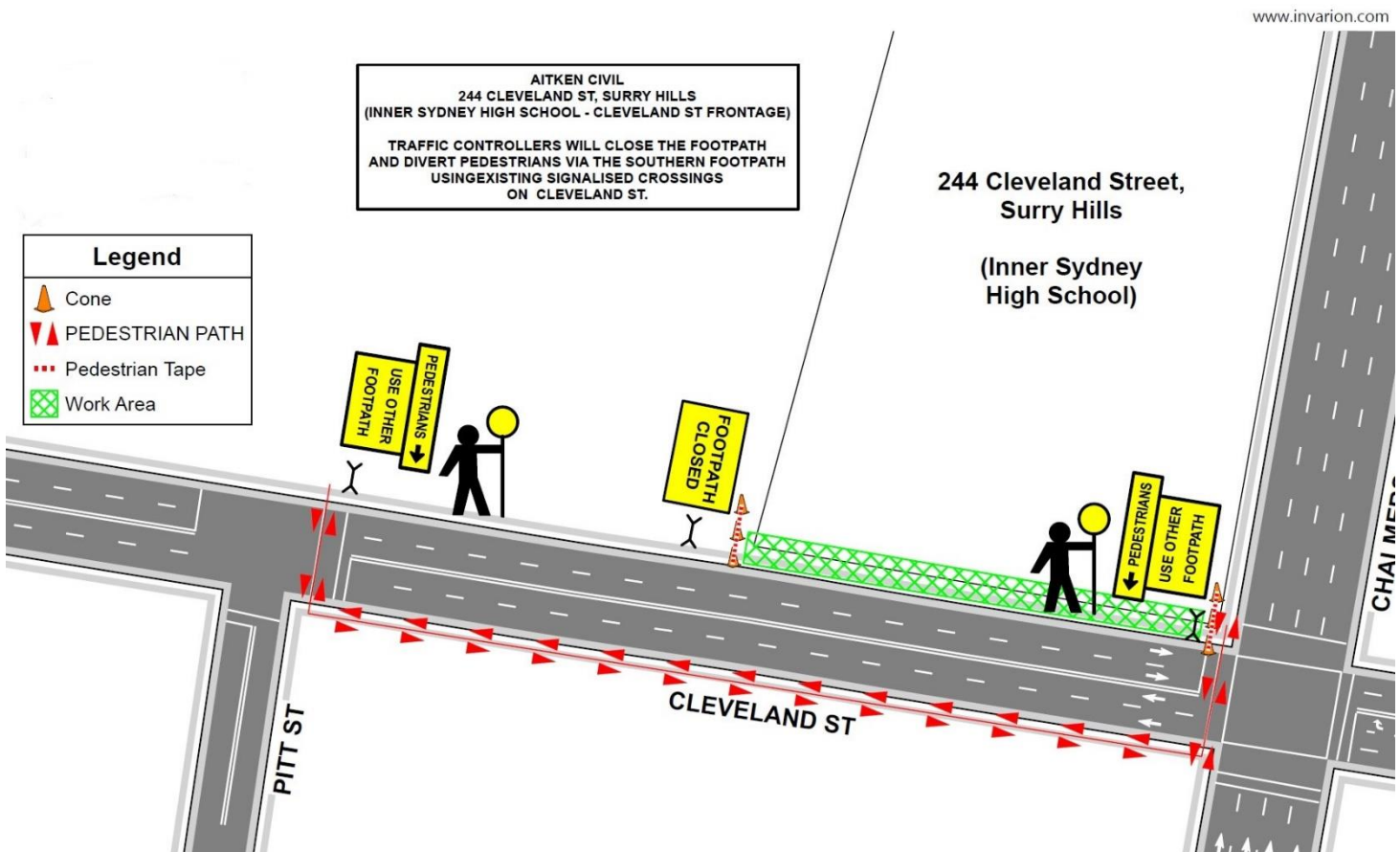
The works involve saw-cutting the pavement, trenching and installation of new stormwater. We will make every effort to minimise noise and disruption, however there will be unavoidable intermittent noise resulting from the saw-cutting and machinery used during trenching and stormwater installation.

Traffic management

There will be periodic footpath closures on both Cleveland and Chalmers Street. A traffic management plan showing the works location is below and overleaf to assist you with access.

Traffic control personnel will be on site to assist motorists and pedestrians. For your safety, please comply with any directives from the traffic control personnel managing vehicle and pedestrian movements during the works.



If you have any queries relating to the temporary traffic changes or this important work at Inner Sydney High School, please contact School Infrastructure NSW using the contact information below. We thank you for your patience and consideration during these important works.



Cleveland Street footpath closure map

Legend	
	Cone
	Pedestrian Tape
	Work Area

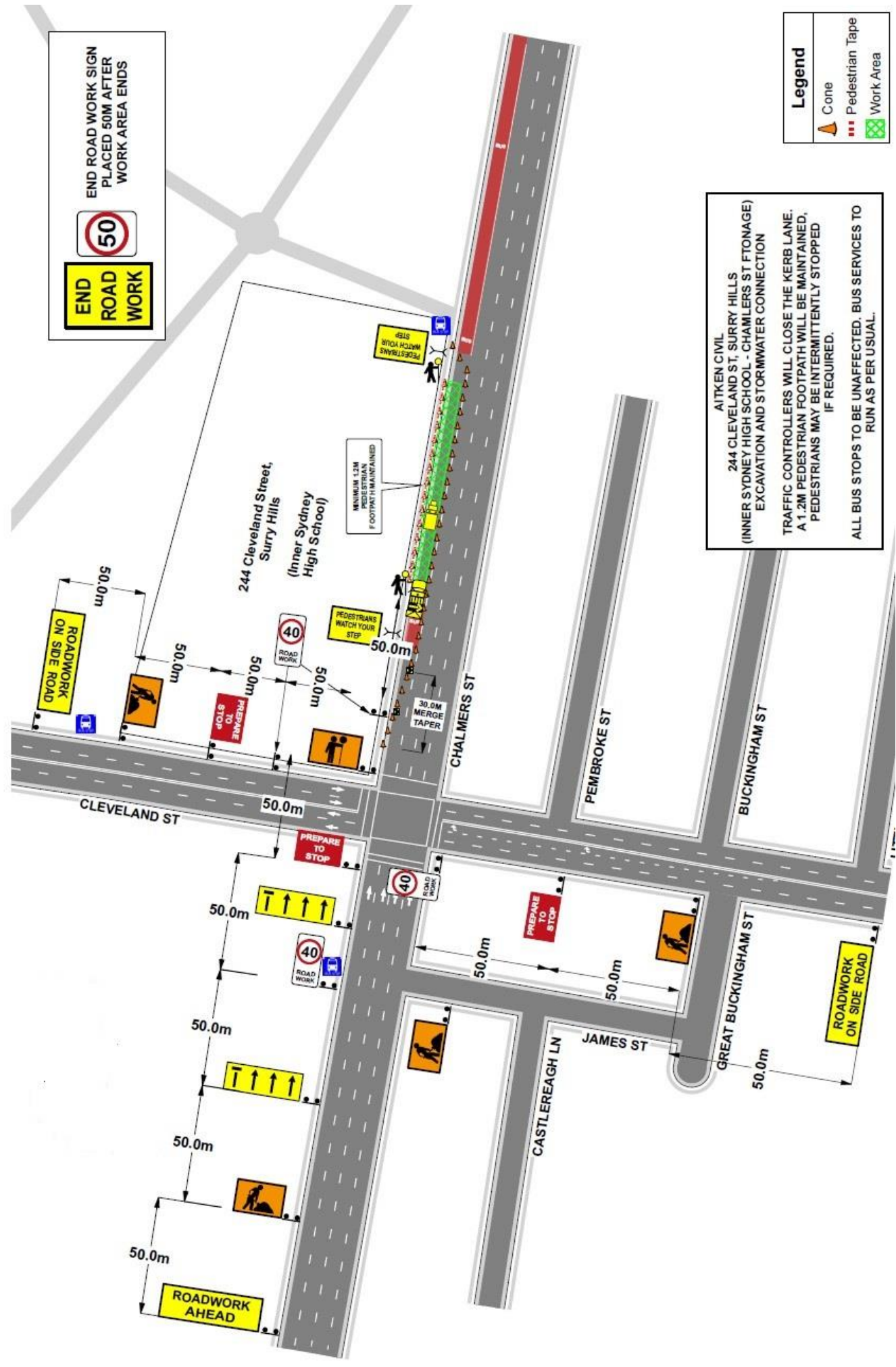
END ROAD WORK SIGN
PLACED 50M AFTER
WORK AREA ENDS

AITKEN CIVIL
244 CLEVELAND ST, SURRY HILLS
(INNER SYDNEY HIGH SCHOOL - CHAMLERS ST FTONAGE)
EXCAVATION AND STORMWATER CONNECTION

TRAFFIC CONTROLLERS WILL CLOSE THE KERB LANE.
A 1.2M PEDESTRIAN FOOTPATH WILL BE MAINTAINED.
PEDESTRIANS MAY BE INTERMITTENTLY STOPPED
IF REQUIRED.

ALL BUS STOPS TO BE UNAFFECTED. BUS SERVICES TO
RUN AS PER USUAL.



Chalmers Street lane closure map