

Inner Sydney High School Works notification

October 2020

Night Works and traffic changes on Chalmers Street

Dear Neighbour,

We are building a new high school in the centre of Sydney. Inner Sydney High School is the result of the redevelopment of the Department of Education's site on the corner of Cleveland and Chalmers Streets in Surry Hills and construction of a new 14 storey high school building.

We are writing to inform you that as part of delivering the new school Aitken Civil Engineering will continue to carry out works on Chalmers Streets.

Chalmers Street Night and Weekend Works

As previously advised, the project is undertaking an upgrade to the streetscape and stormwater works along Chalmers Street. This will now continue until **29 December 2020**.

Hours of Work

Night Works: **9:00pm to 5:00am**

Day Works: **10:00am to 2:00pm**

Weekend Works: **Saturday 5:00am to Monday 5:00am**

(there will be no work on Monday nights, Tuesday nights or Friday nights, or public holidays).

The works involve saw-cutting the pavement, trenching and installation of new stormwater. We will make every effort to minimise noise and disruption, however there will be unavoidable intermittent noise resulting from the saw-cutting and machinery used during trenching and stormwater installation.

Noise disruption will be minimised by ensuring machine reverse beepers are silenced during night works and that noisy works will be completed during the day as much as practicably possible.

For more information contact:

School Infrastructure NSW

Level 8, 259 George Street, Sydney 2000 NSW

Email: schoolinfrastructure@det.nsw.edu.au

Phone: 1300 482 651

www.schoolinfrastructure.nsw.gov.au

Traffic Changes on Chalmers Street

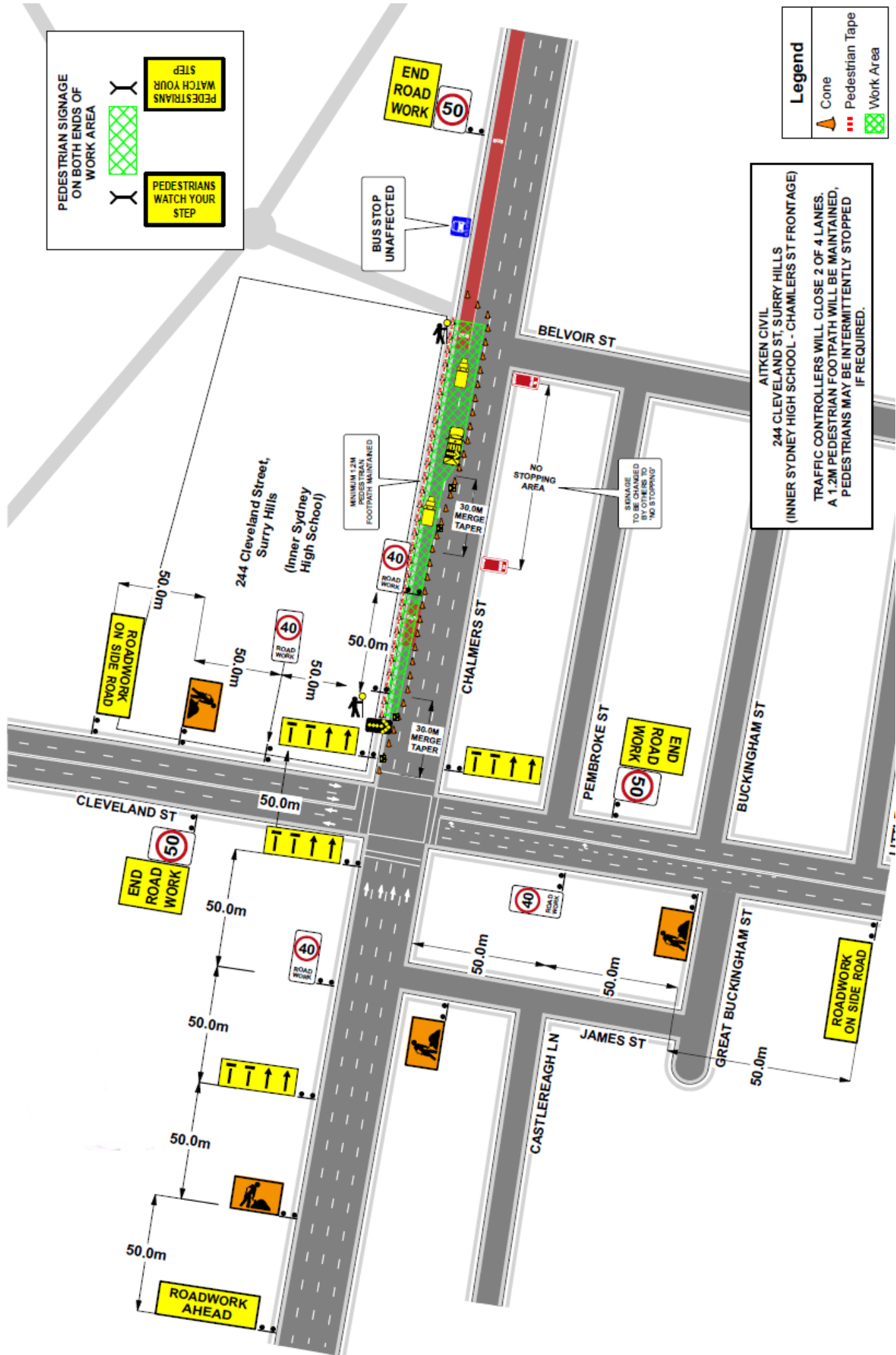
Traffic changes during the works will affect the western kerb side lane on Chalmers Street between Cleveland and Belvoir streets, with northbound traffic reduced to two lanes at Chalmers Street.

There will be periodic footpath closures on Chalmers Street. A traffic management plan showing the works location is on the following page to assist you with access.

Traffic control personnel will be on site to assist motorists and pedestrians. For your safety, please comply with any directives from the traffic control personnel managing vehicle and pedestrian movements during the works.

If you have any queries relating to the temporary traffic changes or this important work at Inner Sydney High School, please contact School Infrastructure NSW using the contact information on page 1.

We thank you for your patience and consideration during these important works.



PEDESTRIAN SIGNAGE ON BOTH ENDS OF WORK AREA

PEDESTRIANS WATCH YOUR STEP

PEDESTRIANS WATCH YOUR STEP

Legend

- Cone
- Pedestrian Tape
- Work Area

AITKEN CIVIL
244 CLEVELAND ST, SURRY HILLS
(INNER SYDNEY HIGH SCHOOL - CHALMERS ST FRONTAGE)

TRAFFIC CONTROLLERS WILL CLOSE 2 OF 4 LANES.
A 1.2M PEDESTRIAN FOOTPATH WILL BE MAINTAINED.
PEDESTRIANS MAY BE INTERMITTENTLY STOPPED IF REQUIRED.

Chalmers Street lane closure map