

# Inner Sydney High School

Day 1 Term 1 2021



## Welcome to your school

We're excited your new facilities at Inner Sydney High School are ready for you to use. Your facilities include:



Innovative  
learning  
spaces



Refurbished  
and refitted  
heritage buildings



Technology-rich  
settings



State of the  
art facilities



Indoor and outdoor  
science learning  
areas



Sport and  
recreational  
spaces

Thank you for your patience during construction. We are thrilled to deliver this project for your school community and hope you enjoy your new spaces.

# Project overview

---

Inner Sydney High School is the result of the redevelopment of the Department of Education's site on the corner of Cleveland and Chalmers Streets in Surry Hills and construction of a new 14-storey high school building.

The heritage buildings on the site have been refurbished as part of the project and integrated to form a major part of the new school.

Inner Sydney High School will accommodate up to 1,200 students from Years 7 to 12.

## Staged delivery

---

The project was delivered in two stages:

**Stage 1:** The heritage buildings on the site have been refurbished as part of the project and integrated to form a major part of the new school, with Year 7 students commencing in the new spaces Day 1 Term 1 2020.

The design includes technology-rich teaching and learning spaces, formal and informal gathering areas for teacher and student interaction, indoor and outdoor spaces, and welcoming meeting areas for parents and teachers. Students are learning in new and different ways. The design of the new school reflects innovative learning space design principles, while retaining the heritage buildings.

**Stage 2:** The new 14-storey tower has been constructed, which includes five STEM focused floors, multiple sporting and recreational spaces. To support this, the school will also have shared use of Prince Alfred Park. Students and staff will start to use the tower from Day 1 Term 1 2021.

## Message from your Principal

---

Welcome to Inner Sydney High School.

Inner Sydney High School is a world-class facility that combines its unique heritage buildings with a 14-storey high-rise tower in the city centre, adjacent to Prince Alfred Park. It is a comprehensive, public high school accommodating up to 1,200 students.

The school will welcome Year 7 students and Year 8 students for Day 1 Term 1, 2021.

As Principal, I see our purpose built school environment as a unique opportunity to embrace the best of innovative learning practice to ensure students are well prepared for the real world and have the tools to achieve personal excellence.

Since my appointment, I have frequently been asked about my personal beliefs and values regarding education. In summary, I am committed to an inclusive education environment where students are known, valued and cared for. The importance of developing respectful, quality relationships between students, teachers and parents will be fundamental to the success of our school. This is echoed in the principles of our proud public education system and will be a hallmark of systems and practices at Inner Sydney High School.

We have established school processes, systems and procedures, to ensure the successful establishment and transition of our new school. With our newly recruited team, we have clearly defined and embedded the knowledge and skills that are required to take full advantage of the purpose-built flexible learning spaces. This is also the opportunity to be transformational in leading teachers and staff to adopt new ways of working and to thrive in this innovative, contemporary learning environment.

There are many exciting challenges ahead as we continue to build the foundations of our new school. As I meet students and parents who are part of the school community, I am truly excited about these opportunities.

I am passionate about public education and the opportunity to be part of this exciting chapter in the NSW Department of Education history.

I look forward to working with you. Our exciting journey has only just begun!



**Robyn Matthews**  
Principal

# Back to school in 2021

## Where is the new Inner Sydney High School located?

Ready for the first day back at school 2021, Inner Sydney High School is located on the corner of Chalmers and Cleveland Streets, Surry Hills. The school entry is from Chalmers Street and provides both pedestrian and accessible access.

## When do I return to school?

The first day of the 2021 school year will be exciting for the students, teachers and parents of Inner Sydney High School. As is normal practice in many high schools, year groups will return to school on consecutive days.

**Year 7:** Friday, 29 January 2021 (9:00am) will commence with an iWeek (Inspired Week) program.

**Year 8:** Monday, 1 February 2021 (8:50am) students will return to school.

# What to expect

## Where do I go when I arrive on the first day 2021?

1. Enter via the main entrance on Chalmers Street, shown on map below.
2. Staff will meet students at the Chalmers Street entry.
3. Principal's welcome will cover key information about your new school.
4. Students will undergo orientation activities as part of iWeek.

## What if I'm a new Year 8 student attending the school?

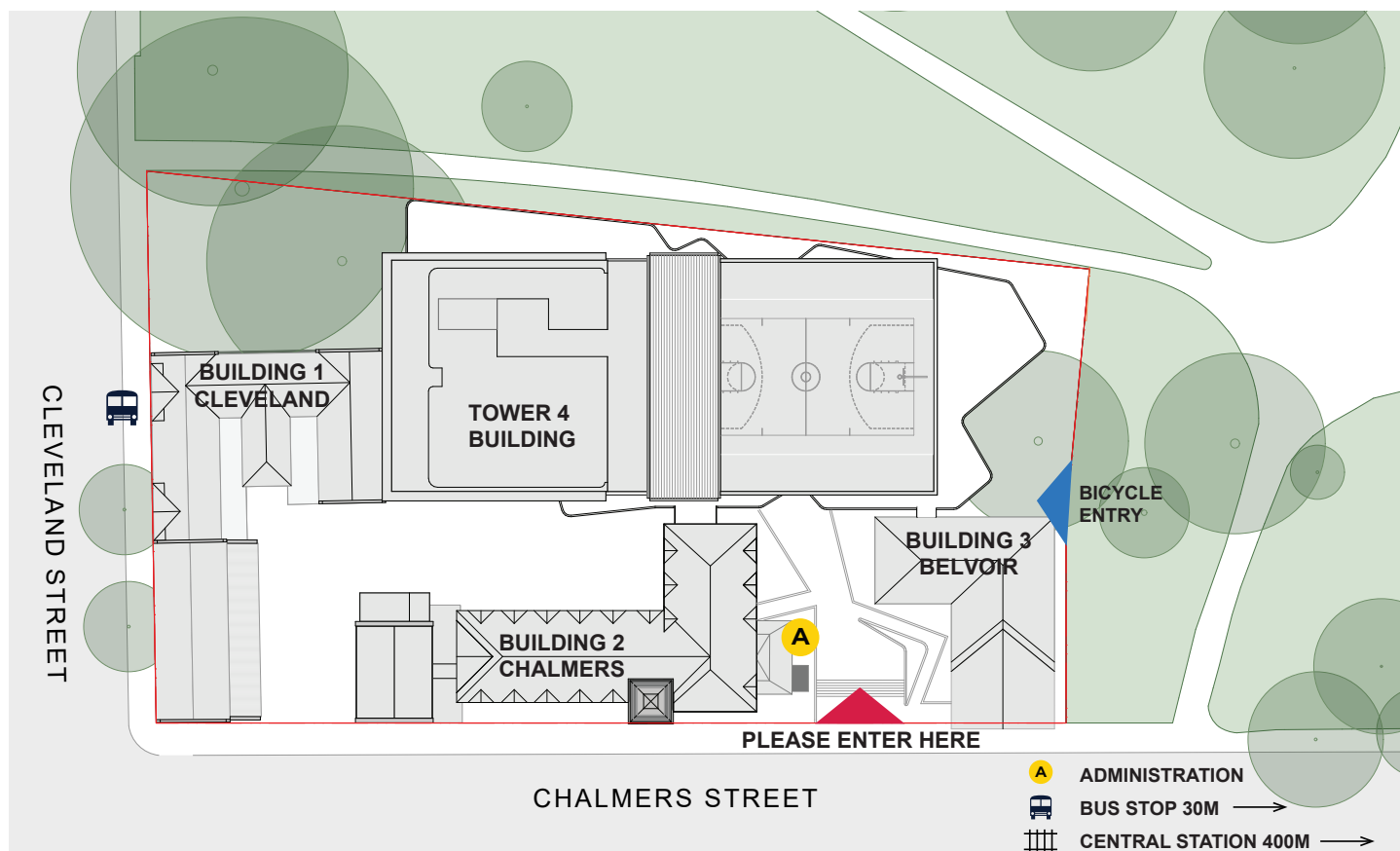
All new students attending Inner Sydney High School in 2021 will participate in an orientation of the new school as part of iWeek.

## When will I get my timetable?

Students will receive their timetable during iWeek.

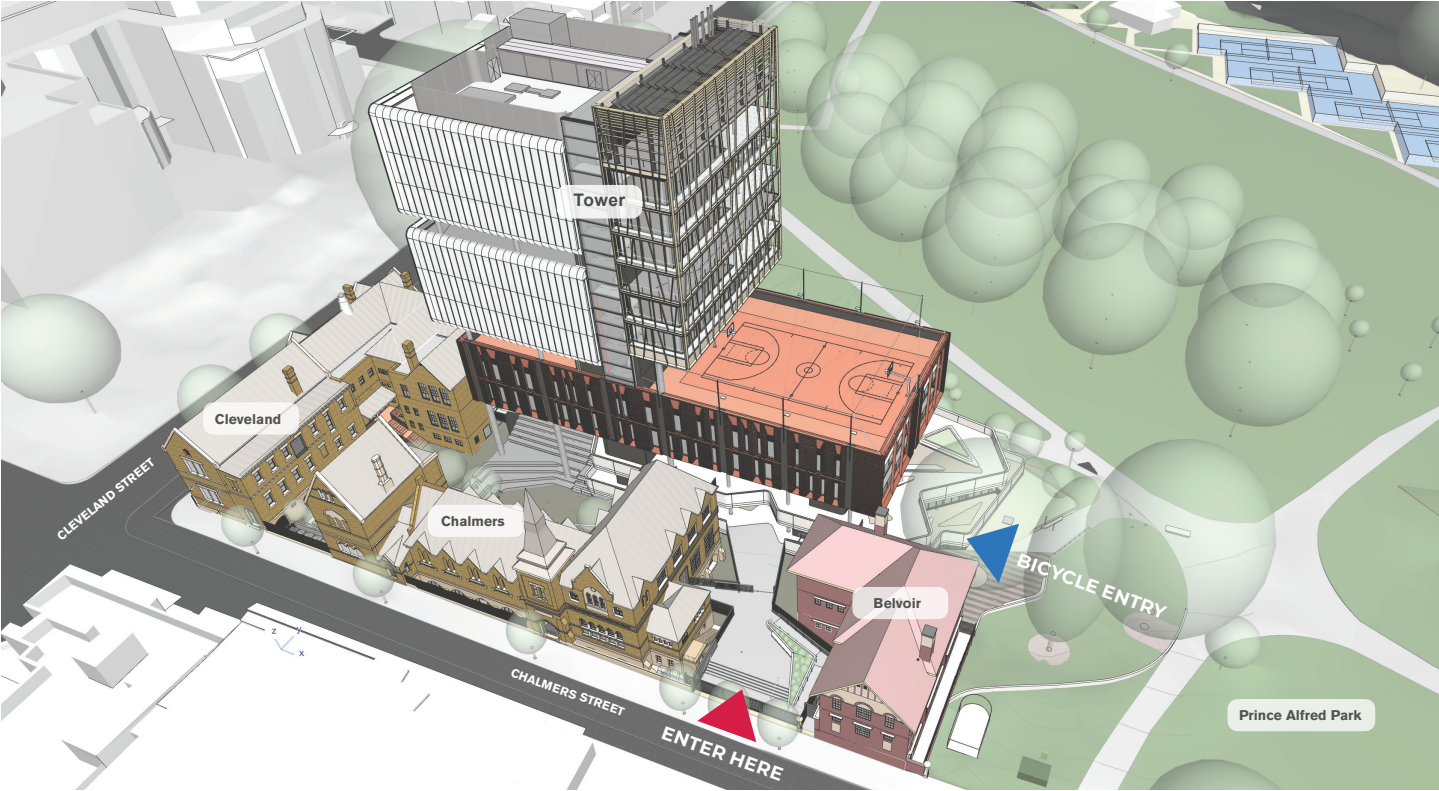
## When are the break times?

All students will have two breaks during the school day. Break 1 and Break 2.



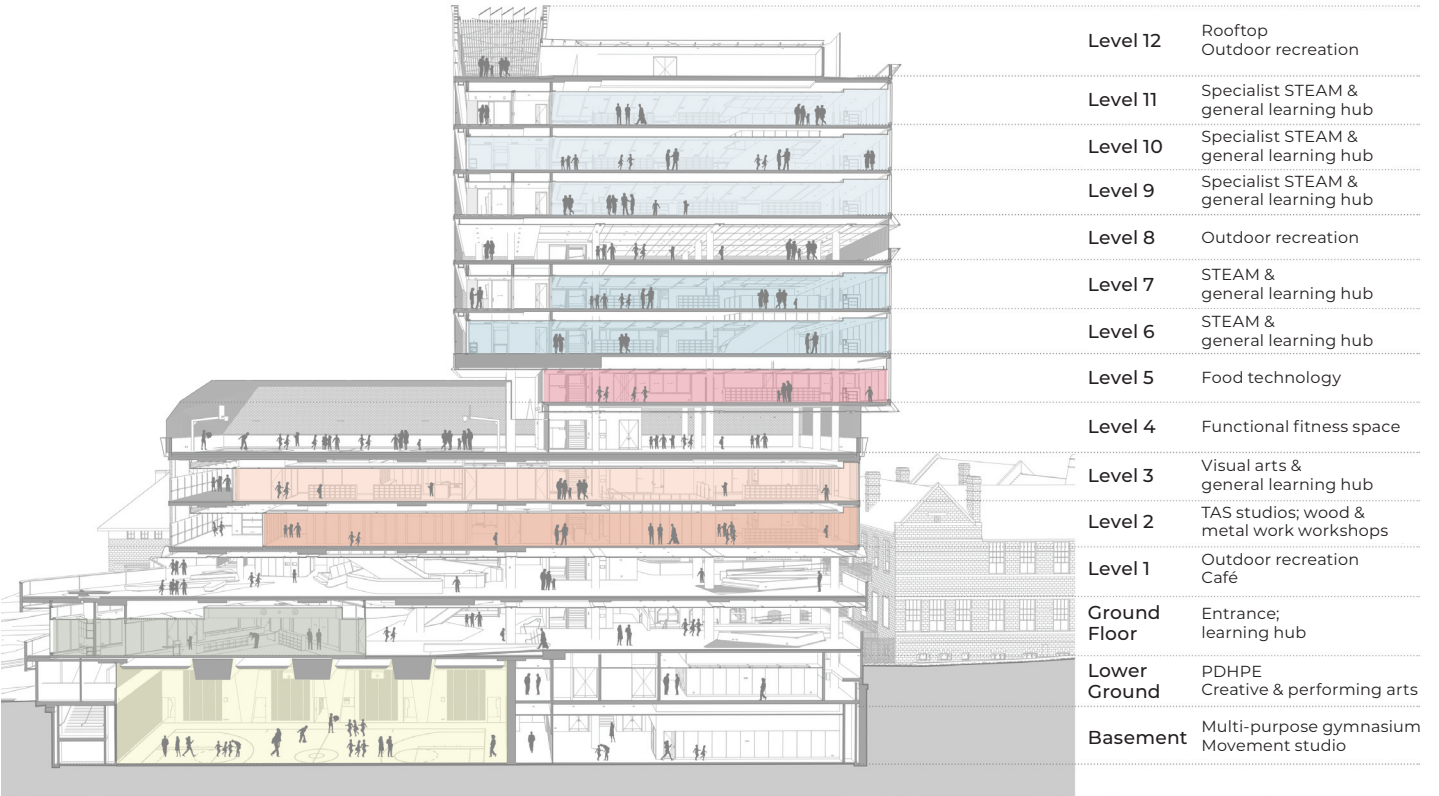
Site map of Inner Sydney High School

# What does the new school look like?



Aerial site map of the 14-storey tower building and heritage buildings: Cleveland, Chalmers and Belvoir

## What is on each level of the 14-storey tower?



Level 12	Rooftop Outdoor recreation
Level 11	Specialist STEAM & general learning hub
Level 10	Specialist STEAM & general learning hub
Level 9	Specialist STEAM & general learning hub
Level 8	Outdoor recreation
Level 7	STEAM & general learning hub
Level 6	STEAM & general learning hub
Level 5	Food technology
Level 4	Functional fitness space
Level 3	Visual arts & general learning hub
Level 2	TAS studios; wood & metal work workshops
Level 1	Outdoor recreation Café
Ground Floor	Entrance; learning hub
Lower Ground	PDHPE Creative & performing arts
Basement	Multi-purpose gymnasium Movement studio

# What is inside the new school?

---



# School vision

---

Within a diverse, inner city community, Inner Sydney High School is a world-class education facility where students are known, valued and cared for. Students and teachers, as agile, innovative and reflective learners will be supported by parents and key stakeholders to maximise potential for future success and wellbeing.

Inner Sydney High School will be a centre of excellence for innovative learning, providing high quality learning opportunities in innovative learning spaces for students and teachers to collaborate and thrive in a sustainable and stimulating environment.

## Our school values

---

### Respect

At the heart of the school is community and the essence of this is respect and teamwork. Positive communication with each other encourages a sense of belonging and feeling safe and valued in the school. Our integrity means that we stay true to our best selves. The pride with how we wear our uniform and how we hold ourselves reflects the high value we place on being a member of the community at Inner Sydney High School.

### Kindness

If we can be anything in the world be kind. Positive Education underpins our Inspired Learning framework in our everyday school life. Our ability to express kindness and compassion to self leads us to extend these feelings to people within our community. Gratitude and mindfulness build positive relationships, mental wellbeing and resilience.

### Excellence

We believe that each and every one of our students has the ability to achieve personal excellence within the framework of support provided in Inner Sydney High School. Our students are curious and use their critical thinking skills to seek answers to questions that may at first appear difficult. They are not afraid to experiment and draw upon tools and strategies that will enable them to shine.

# How our students learn

---

Inner Sydney High School was purpose built on the basis of a contemporary educational model. This model recognises that deep learning requires a greater interaction between disciplines and the integration of multiple perspectives in order to connect new knowledge and deeper understanding to real world problems and possibilities.

The design of the school, with shared access of space and purpose-built rooms, promotes these understandings and avoids the formation of silos of disciplinary practice. The teacher acts more as facilitator and a strong professional learning culture and collaboration are embedded in workplace practice, increasing communication and team-based teaching. This builds our culture as reflective practitioners who model collaboration, inquiry and excellence whilst embracing student centred pedagogy.

Collaboration is at the centre of our professional practice as co-teachers. In seeking to ensure student growth and attainment, assessment is formative in nature and teaching is seen as a reflexive and evidence-based process. Consequently, Inner Sydney High School uses a model of continuous assessment where teachers collaborate in producing, implementing and assessing checkpoints. These are formative, low stakes tasks where students and teachers receive feedback on how their knowledge and skills are developing to inform teaching and learning.

### Pursue Your Passion

Pursue Your Passion (PYP) is an inquiry-based project which focuses on different concepts at different times. Students learn about an area and its expression in the real world, and across key learning areas, before going on to complete real world products. Each inquiry is a semester in length. Students build 21st Century capabilities, creative and critical thinking skills as they answer essential questions as they move between the discovery and creating elements of projects.

In Year 7, the focus is identity in Semester 1 and sustainability in Semester 2. Semester 1 culminates in an art exhibition and Semester 2 in a pitch for a sustainability project.

In Year 8, the focus in first semester is an issue in the local community that the students identify and seek to solve, while in Semester 2 their focus is a world issue. Both projects are celebrated in a public presentation.

# Frequently asked questions

---

## What kind of school is Inner Sydney High School?

The school will accommodate students in Year 7 to Year 12 inclusive. Year 7 and 8 students will use the spaces throughout 2021. The school is a contemporary learning environment offering flexible learning spaces.

## What happens if a student arrives late?

Students who arrive after 8:50am are expected to report to the school Administration Office in Chalmers Building (Building 2) and sign in.

## Will students be using the lift?

Students will be introduced to the most appropriate ways to use the lifts and stairs during iWeek.

## Where is the café?

The café is located on the ground level of the school. Students will be shown all necessary amenities during iWeek.

## Where is the sick bay?

There are two sick bays. Both are located on the lower ground level of the school near the Administration Office in Chalmers Building (Building 2).

## Where is the School Counsellor?

The School Counsellor's meeting space is located in the Learning Hub on the ground floor (Tower 4). Students will be shown all necessary amenities during iWeek.

## What are the new school policies?

On the first day of school, an induction and overview of the new policies and procedures will be outlined.

## Where are the recreation areas?

In 2021, students will have access to the multipurpose outdoor area, courtyard and the shared area of Prince Alfred Park.

## When will students receive their timetable?

Students will receive their timetable during iWeek.

## How many break times are there?

All students will have two breaks during the school day. Break 1 and Break 2.

## What are the transport options to and from school?

Traffic control personnel will be at the school to help direct students when they arrive in the morning and at the end of their first day. Please follow all traffic control directions to ensure the safety of all students, teachers and visitors.

- There are bus stops located on Cleveland and Chalmers Streets, a short walk from the school entrance.
- Central Station is a 400 metre walk north along Chalmers Street from the school entrance.
- Information about bus routes and train timetables can be found at TfNSW website: [transportnsw.info](https://transportnsw.info).
- The school has a separate entry from Prince Alfred Park for bicycles with secure facilities available.





Inner Sydney High School – view from Chalmers Street

## Contact us

For more information about this project contact School Infrastructure NSW:

**Website:** [schoolinfrastructure.nsw.gov.au](https://schoolinfrastructure.nsw.gov.au)

**Email:** [schoolinfrastructure@det.nsw.edu.au](mailto:schoolinfrastructure@det.nsw.edu.au)

**Phone:** 1300 482 651

For information about school activities and operations, contact the school directly:

**Principal:** Robyn Matthews

**Website:** [innersydneyhighschool.schools.nsw.gov.au](https://innersydneyhighschool.schools.nsw.gov.au)

**Email:** [innersydney-h.school@det.nsw.edu.au](mailto:innersydney-h.school@det.nsw.edu.au)

**Phone:** (02) 9578 2020