

Inner Sydney High School Works notification

4 December 2020

Works on Chalmers and Cleveland Streets

Dear Neighbour,

We are building a new high school in the centre of Sydney. Inner Sydney High School is the result of the redevelopment of the Department of Education's site on the corner of Cleveland and Chalmers Streets in Surry Hills and construction of a new 14 storey high school building.

We are writing to inform you that as part of delivering the new school Aitken Civil Engineering will continue to carry out works on Chalmers and Cleveland Streets.

Chalmers Street Works

As previously advised, the project is undertaking an upgrade to the streetscape and stormwater works along Chalmers Street. We have received feedback from residents regarding interruptions from recent night works and we apologise for any inconvenience that this has caused.

We have temporarily ceased all night activities and worked with Transport for NSW to obtain approval for weekday and weekend day hours to continue the work commencing **7 December to 24 December**.

We are looking at options to continue night works for minimal disruption work (no heavy machinery, cutting of pavement or jackhammering) however should this occur further information will be provided.

We are currently liaising with Transport for NSW for works that are required in January.

Hours of Work

Weekday Works: **10:00am to 7:00pm**

Weekend Day Works **December 19 and 20 only: 7:00am to 7:00pm**

The works involve saw-cutting the pavement, trenching and installation of new stormwater. We will make every effort to minimise noise and disruption, however there will be unavoidable intermittent noise resulting from the saw-cutting and machinery used during trenching and stormwater installation.

For more information contact:

School Infrastructure NSW

Level 8, 259 George Street, Sydney 2000 NSW

Email: schoolinfrastructure@det.nsw.edu.au

Phone: 1300 482 651

www.schoolinfrastructure.nsw.gov.au

External Lighting Testing

The project will be undertaking testing of the lighting for the Level 4 basketball court the next week.

The following items will be tested:

- luminosity of lighting to East, North and West aspects
- testing of lighting intrusion to adjacent buildings.

Night Testing will be undertaken weekdays from **4:00pm** to **9:00pm**.

Future use of the lights

It is not anticipated that these lights will be in use nightly, but only on occasion for particular events or activity for a short period of time and turned off at completion of the activity.

If you have any queries relating to this testing please contact School Infrastructure NSW using the contact details below. We thank you for your patience and consideration during these important works.

Traffic changes on Chalmers Street

Traffic changes during the works will affect the western kerb side lane on Chalmers Street between Cleveland and Belvoir streets, with northbound traffic reduced to two lanes at Chalmers Street.

There will be periodic footpath closures on Chalmers Street. A traffic management plan showing the works location is on the following page to assist you with access.

Traffic control personnel will be on site to assist motorists and pedestrians. For your safety, please comply with any directives from the traffic control personnel managing vehicle and pedestrian movements during the works.

Cleveland Street Night and Weekend Works

Upgrade works will also occur on Cleveland Street including a pram ramp on the corner of the school site, sandstone works and a crossover driveway into the school. These works will take approximately 4 nights to complete commencing **Friday 11 December 2020**, weather dependent.

Hours of Work

Night Works: **9:00pm** to **5:00am**.

A map on the following page identifies where these works are taking place.

If you have any queries relating to the temporary traffic changes or this important work at Inner Sydney High School, please contact School Infrastructure NSW using the contact details below.

We thank you for your continued patience and consideration during these important works.

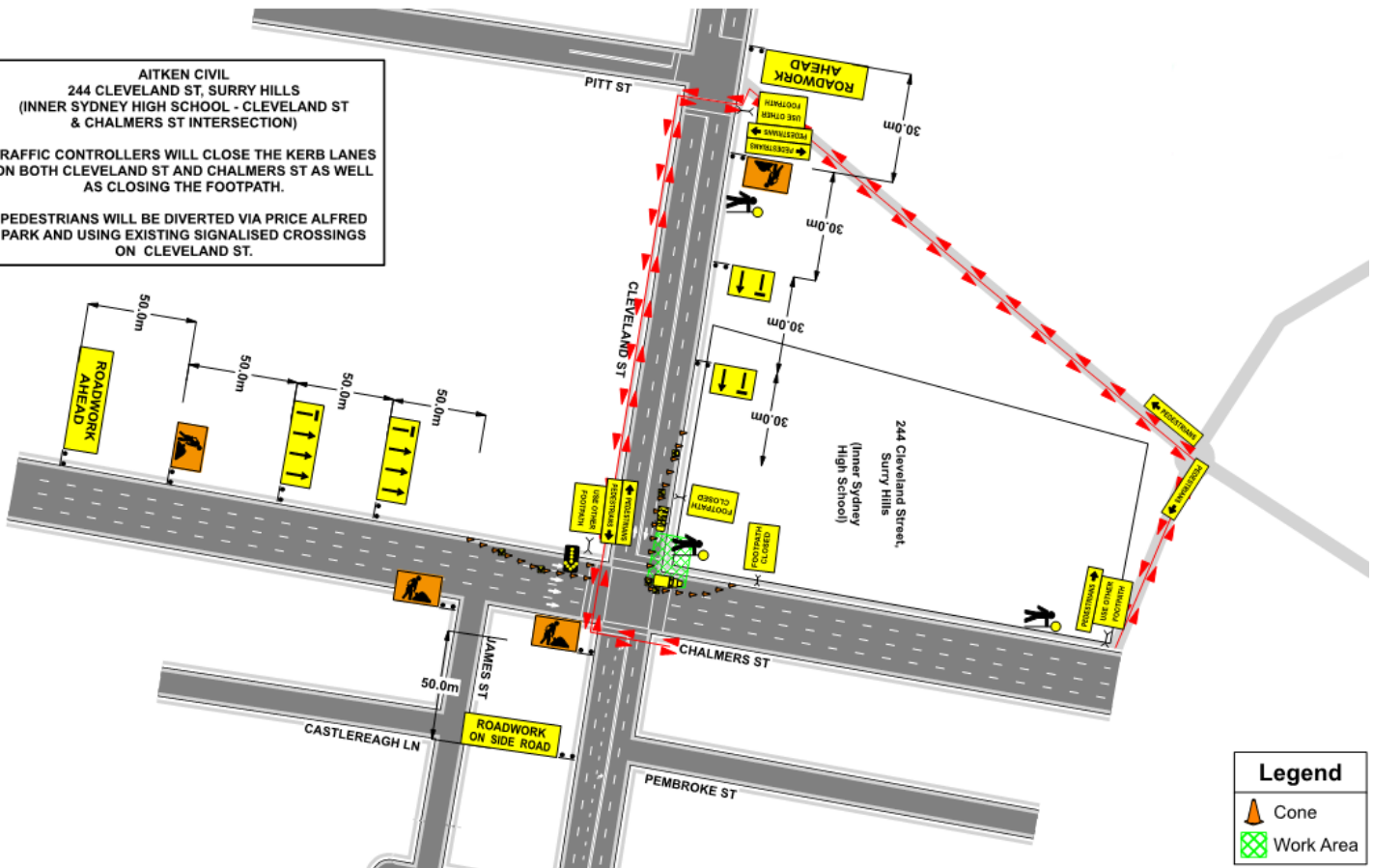
For more information contact:

School Infrastructure NSW
Level 8, 259 George Street, Sydney 2000 NSW
Email: schoolinfrastructure@det.nsw.edu.au
Phone: 1300 482 651
www.schoolinfrastructure.nsw.gov.au

AITKEN CIVIL
244 CLEVELAND ST. SURRY HILLS
(INNER SYDNEY HIGH SCHOOL - CLEVELAND ST & CHALMERS ST INTERSECTION)

TRAFFIC CONTROLLERS WILL CLOSE THE KERB LANES ON BOTH CLEVELAND ST AND CHALMERS ST AS WELL AS CLOSING THE FOOTPATH.

PEDESTRIANS WILL BE DIVERTED VIA PRICE ALFRED PARK AND USING EXISTING SIGNALISED CROSSINGS ON CLEVELAND ST.



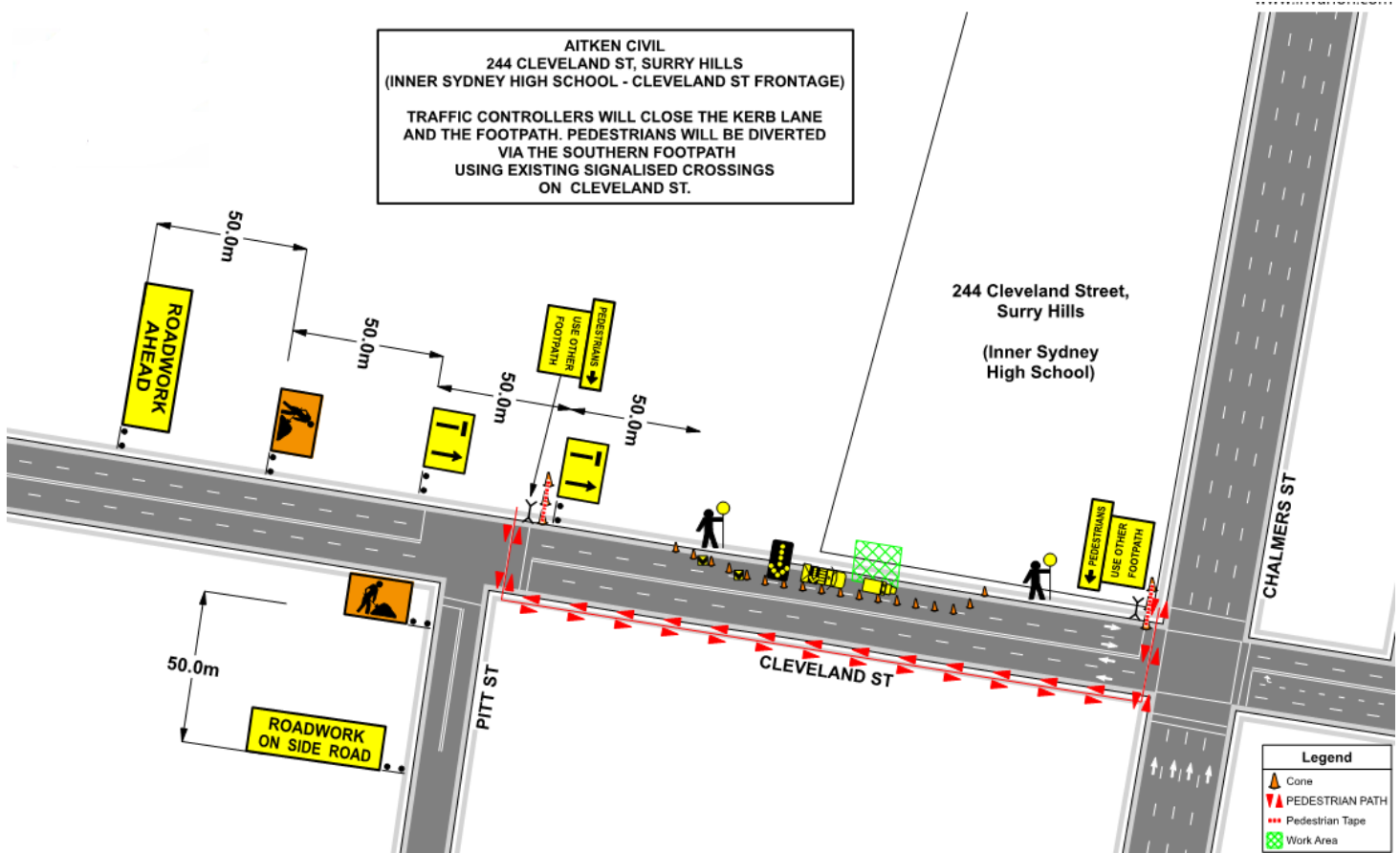
Legend

- Cone
- Work Area

Pram Ramp for corner of Cleveland & Chalmers Street footpath and one lane closure map

AITKEN CIVIL
244 CLEVELAND ST, SURRY HILLS
(INNER SYDNEY HIGH SCHOOL - CLEVELAND ST FRONTAGE)

TRAFFIC CONTROLLERS WILL CLOSE THE KERB LANE AND THE FOOTPATH. PEDESTRIANS WILL BE DIVERTED VIA THE SOUTHERN FOOTPATH USING EXISTING SIGNALISED CROSSINGS ON CLEVELAND ST.



Legend

- Cone
- PEDESTRIAN PATH
- Pedestrian Tape
- Work Area

Driveway Crossover for Cleveland Street footpath and one lane closure map