

Inner Sydney High School Project overview

A project to bring you stage 2 of a new high school in the centre of Sydney is almost complete.

Inner Sydney High School is the result of the redevelopment of the Department of Education's site on the corner of Cleveland and Chalmers Streets in Surry Hills and construction of a new 14 storey high school building.

The heritage buildings on the site have been refurbished as part of the project and integrated to form a major part of the new school, with Year 7 students commencing in the new spaces from Term 1 2020.

When finished, Inner Sydney High School will accommodate up to 1,200 students from Years 7 to 12. Enrolment is being staged and the first Year 7 students started classes at Inner Sydney High School from Day 1 Term 1 2020 in the refurbished heritage buildings. Day 1 Term 1 2021 will see Year 7 and Year 8 students using the new spaces in the 14 storey tower and the refurbished heritage buildings.

For information on the new school's operation or to find out how you can be involved with the school, please visit the Inner Sydney High School [website](#).

Facilities at Inner Sydney High School include:



Innovative
learning spaces



Refurbished and refitted
heritage buildings



Technology-rich
settings



State of the art facilities



Indoor and outdoor
science learning areas



Sport and recreational
spaces



The new Inner Sydney High School – view from Chalmers Street

What are innovative learning spaces?

Our children's education is vital – they are the next leaders, the future workforce and the foundation of communities for generations to come.

Innovative learning prepares students across all curriculum areas and learning stages with skills and capabilities to thrive in a rapidly changing and interconnected world. It connects students, engages their sense of curiosity, and allows flexible, technology-rich spaces for one-to-one, small group and whole class activities. Innovative learning fosters collaborative learning between students and teachers.



Space

- There are zones for different activities, with varied furniture and resources – such as booths, standing tables, studios and bean bags.
- Spaces can be connected by glass or sliding doors with furniture in corridors and on balconies to extend the learning space.
- Spaces are designed to be shared by multiple classes.



Students

- Students have the ability to move around the learning space to encourage collaborative learning.
- Students working across a range of projects simultaneously.
- Students engaged in hands on learning, building and testing.



Teachers

- Movement around the learning space rather than the teacher being at the front of the room.
- Teachers plan learning together, for example in faculty teams.
- Teachers teaching together to better meet the needs of students.



Learning

- Personalised learning, so each student is learning at their own level and pace.
- Students learning in large groups, small groups or individually.
- Students have opportunities to work towards the same project in different subject areas, encouraging cross disciplinary learning.



Technology

- Technology integrated into the space to extend learning.
- Accessibility of technology to suit different activities at point of need, for example filming and recording equipment.
- WiFi accessible across all learning areas.

What to expect on your first day

When do I start back at school?

Friday 29 January 2021 – Year 7 (9:00am) commence with an iWeek (Inspired Week) program.

The first day of the 2021 school year will be exciting for the students, teachers and parents of Inner Sydney High School. Identifiable Department of Education Guides will be in place around the surrounding streets to direct Year 7 students to the main entry of the new school.

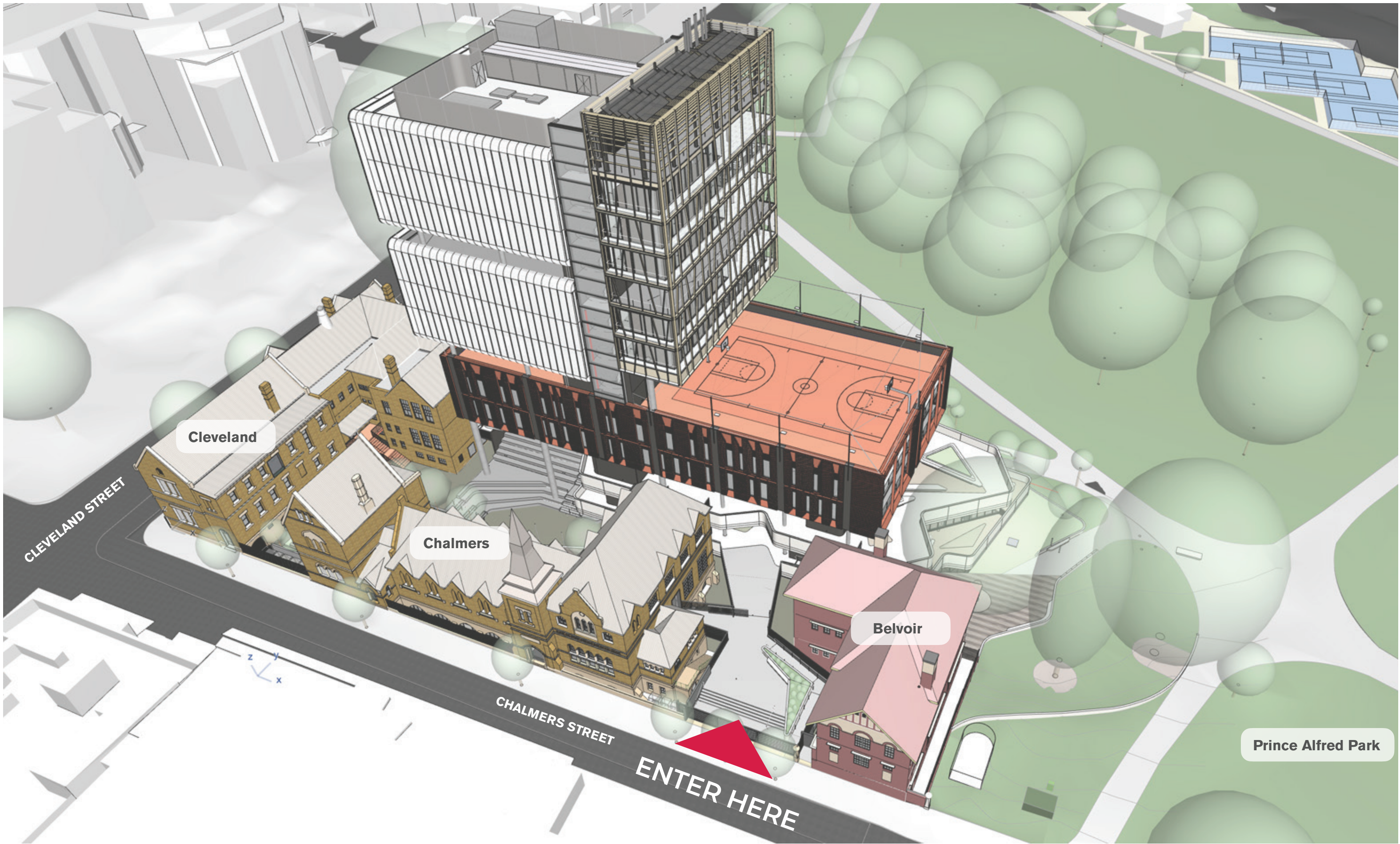
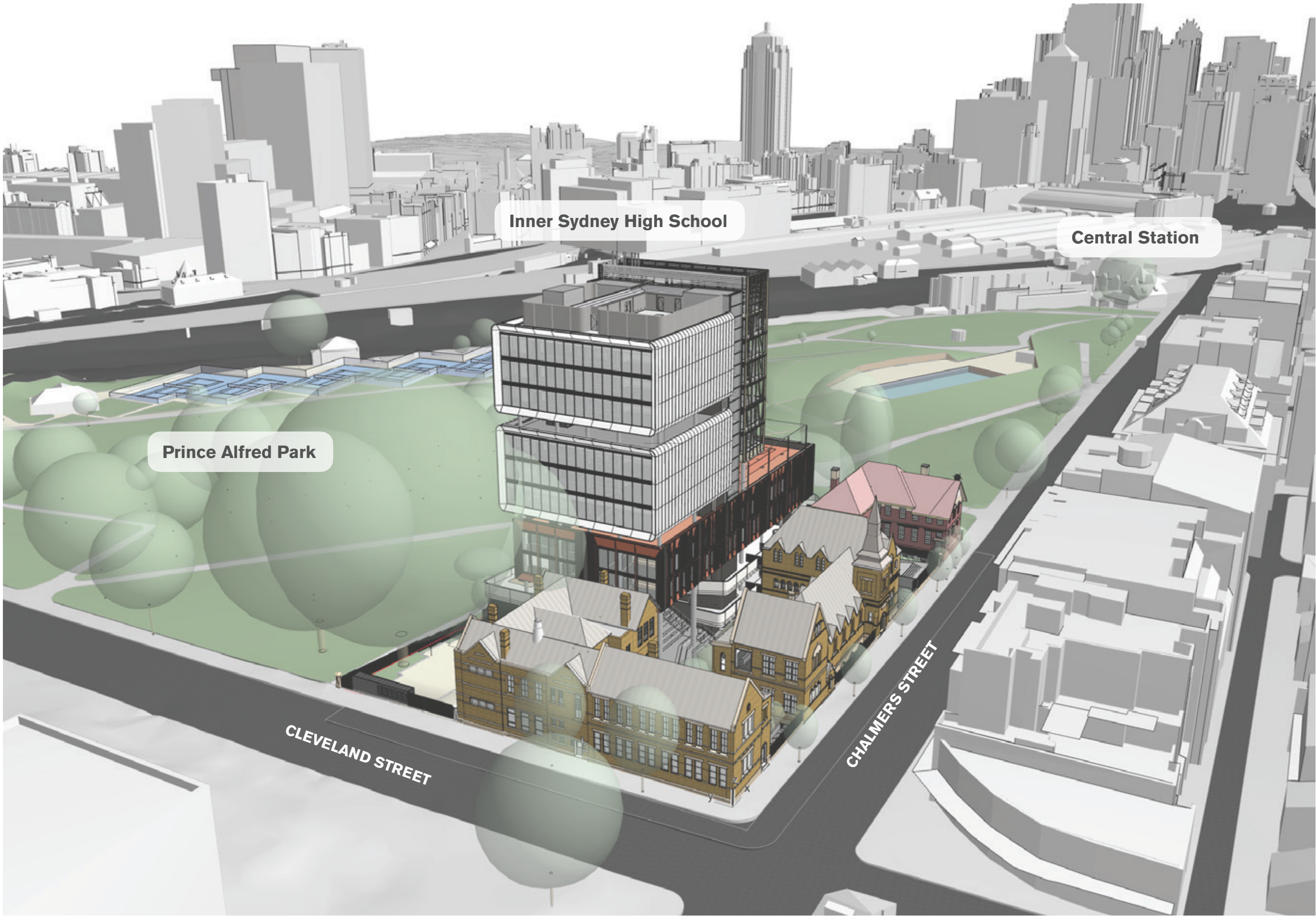
Monday 1 February 2021 – Year 8 (8:50am) will return to school.

Where do I go?

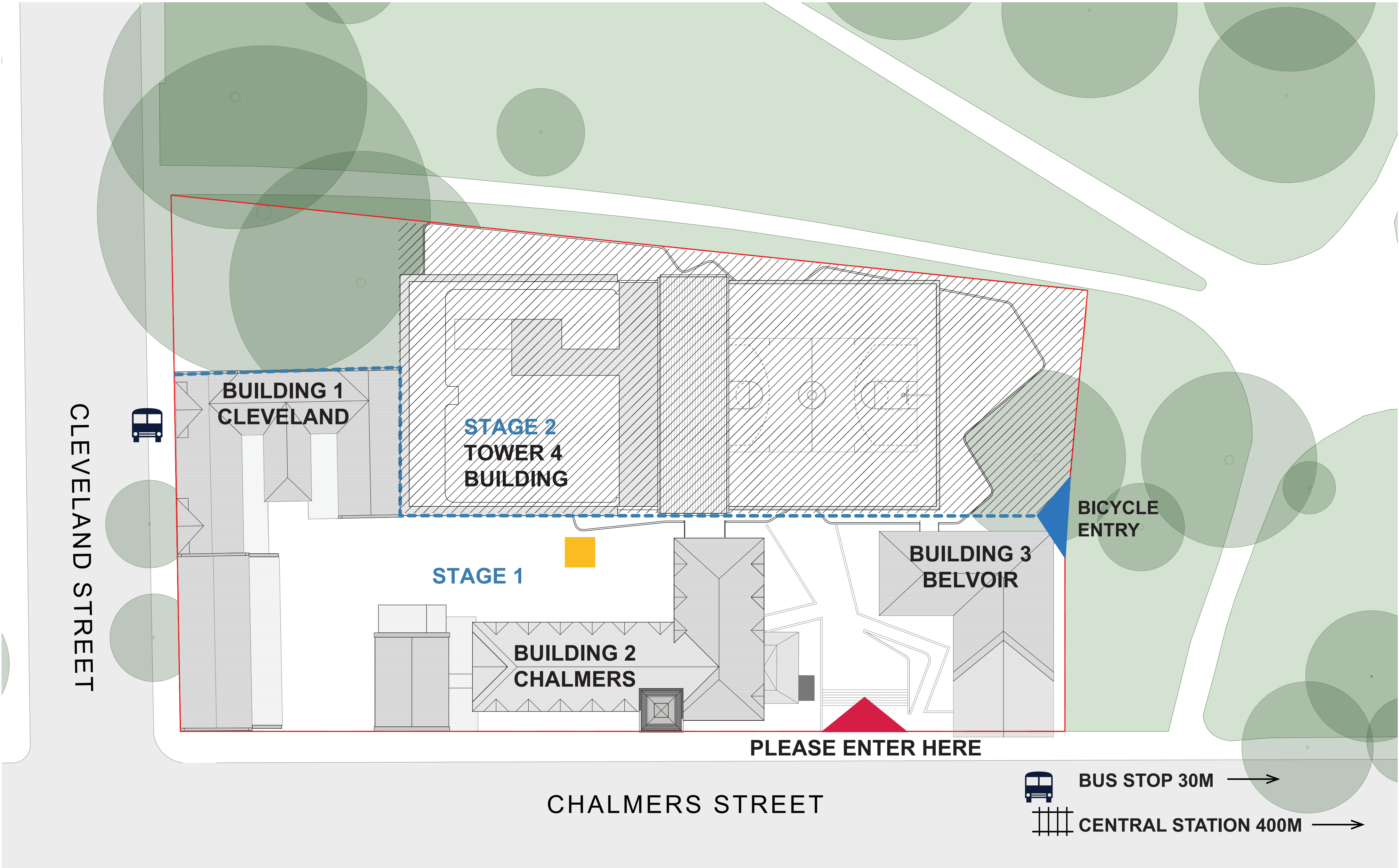
Staff will be on hand to guide students to the main entry of the new school. Please review the following important information for your first day:

- 1** Enter the main entrance on Chalmers Street.
- 2** Students will meet staff at the Chalmers Street entry.
- 3** Principal's welcome will cover key information about your new school.
- 4** Students will undergo orientation activities as part of iWeek.

The site



Wayfinding map



Inner Sydney High School

For more information phone: 1300 482 651
Email: schoolinfrastructure@det.nsw.edu.au

Specialist learning spaces

These are some of the contemporary specialist learning spaces in Inner Sydney High School.

