

Artist impression of the Inner Sydney High School upgrade

## Inner Sydney High School

### Project update

September 2019

#### Investing in our schools

The NSW Government is investing \$6.7 billion over the next four years to deliver 190 new and upgraded schools to support communities across NSW. In addition, a record \$1.3 billion is being spent on school maintenance over five years. This is the largest investment in public education infrastructure in the history of NSW.

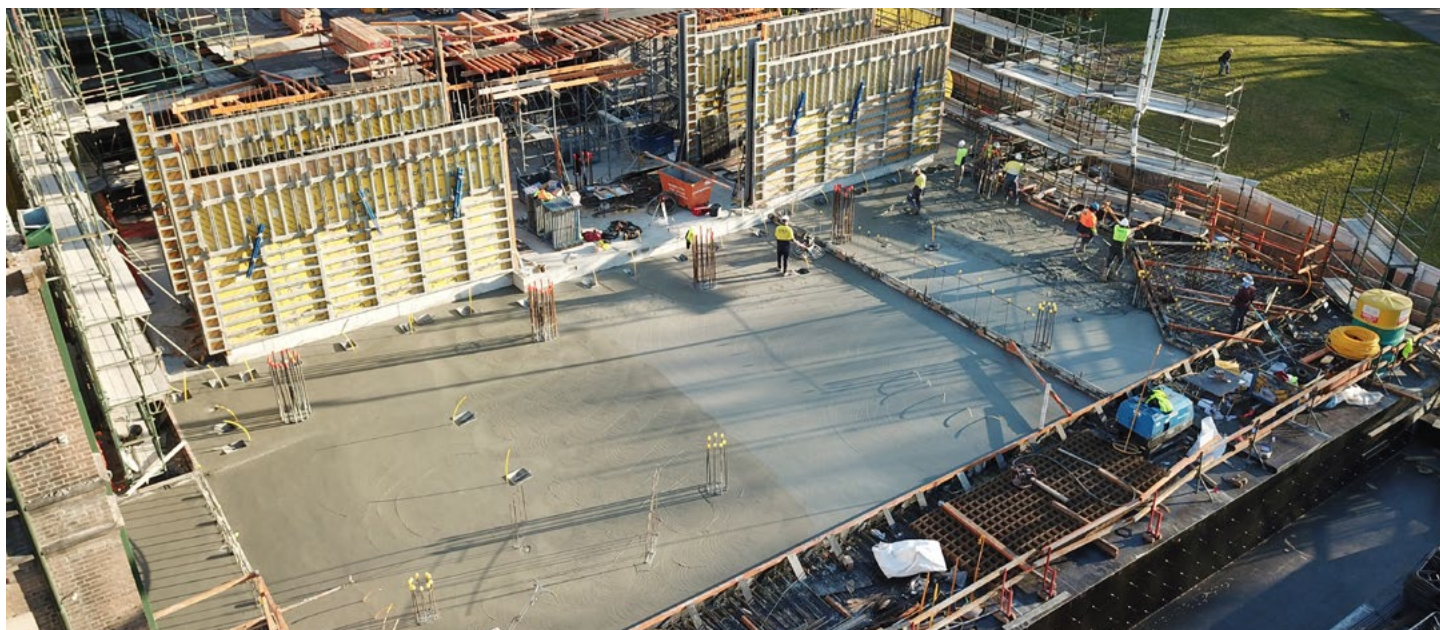
#### Construction progress

- Internal refurbishment of the heritage buildings and external façade repair works are progressing in preparation for the school's first intake of Year 7 students in 2020.
- Tower construction is at level 1 and climbing fast.

#### Upcoming activities

- Heritage façade restoration continues.
- Continued internal fit-out of the heritage buildings.
- Ongoing construction of the main tower structure.





The school's new tower building is taking shape



Installation of additional windows to assist with noise reduction



External facade restoration of heritage buildings

## Working hours

Standard site working hours are:

- 7.00am to 6.00pm - Monday to Friday
- 7.30am to 3.30pm - Saturdays

The exception will be necessary night works which will be notified ahead of time. No work takes place on Sundays or public holidays.

**Inner Sydney High School** also has its own website – <https://innersydneyhighschool.schools.nsw.gov.au/>

**Enrolments for Year 7** – Day 1, Term 1 in 2020 are still to be finalised.

For school operations or enrolment information, email [innersydneyhighschool@det.nsw.edu.au](mailto:innersydneyhighschool@det.nsw.edu.au) or call 0448 710 536.

## For more information contact:

School Infrastructure NSW  
Email: [schoolinfrastructure@det.nsw.edu.au](mailto:schoolinfrastructure@det.nsw.edu.au)  
Phone: 1300 482 651  
[www.schoolinfrastructure.nsw.gov.au](http://www.schoolinfrastructure.nsw.gov.au)