

Inner Sydney High School

Welcome



Examples of the new school uniform



Robyn Matthews, Principal

Message from Inner Sydney High School Principal

It is with great pleasure that I extend a warm welcome to students and parents joining us for their first year at Inner Sydney High School. It has been an absolute privilege to be part of the development of a new school which allows staff and students the opportunity to embrace all aspects of contemporary teaching and learning practices in a purpose-built school environment.

From the very beginning of the Inner Sydney High School journey, the authentic involvement of the community has been a crucial part of the process. I am committed to ensuring that we are providing a first-class education facility for all students that embraces the values our public education system stands for. I am very proud to be leading Inner Sydney High School alongside an extremely talented, inspiring and hard-working team who are constantly exploring ways to ensure our innovative teaching and learning practices are purposeful and engaging without losing sight that students are always the centre of what we do. We are so excited to be starting our learning journey together.

We show our respect and acknowledge the Traditional Custodians of this land, the Gadigal People of Eora Nation.

Welcome to the new Inner Sydney High School

The first day of the 2020 school year at Inner Sydney High School will be exciting for students, teachers, school administration staff, parents and carers.

The Inner Sydney High School community will be learning together in heritage buildings that have been extensively refurbished in readiness for our first Year 7 students.



Artist impression of the new Inner Sydney High School – view from Chalmers Street

Investing in our schools

Facilities at Inner Sydney High School include:



Innovative learning spaces



Refurbished and refitted heritage buildings



Technology-rich settings



STEM focused facilities for music and visual arts



Indoor and outdoor science learning areas



Multiple sport and recreational spaces

Inner Sydney High School construction – staged delivery

Stage One

Stage one of Inner Sydney High School's construction has seen the extensive refurbishment of the school's heritage buildings.

Stage Two

Stage two is due for completion before the end of 2020 and includes:

- ongoing construction of the new 14-storey tower
- new indoor basketball court/gymnasium
- additional outdoor learning areas
- recreation areas

Please be assured the safety and wellbeing of students and staff is our top priority. The Stage two construction area is securely separated with construction walls to keep it inaccessible to students.

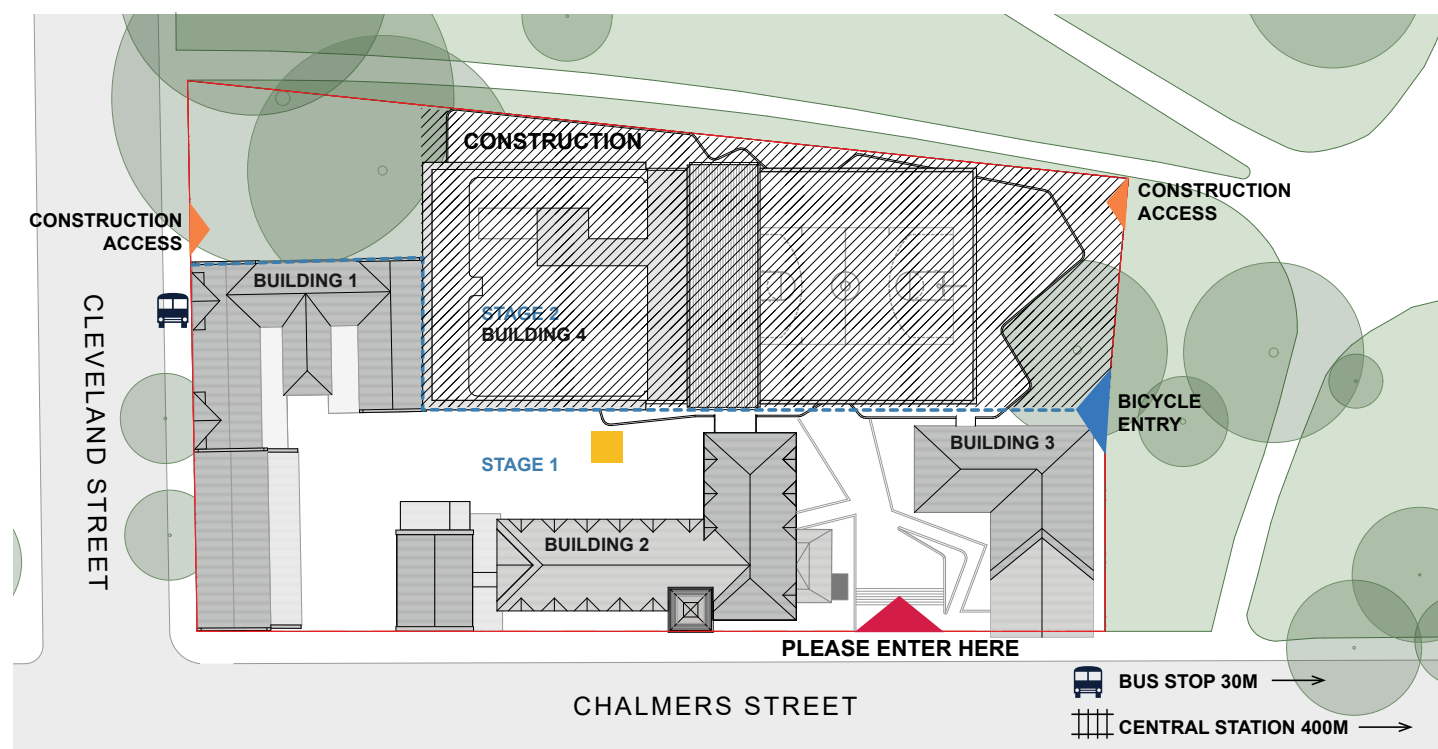
What to expect Week 1 Term 1 2020

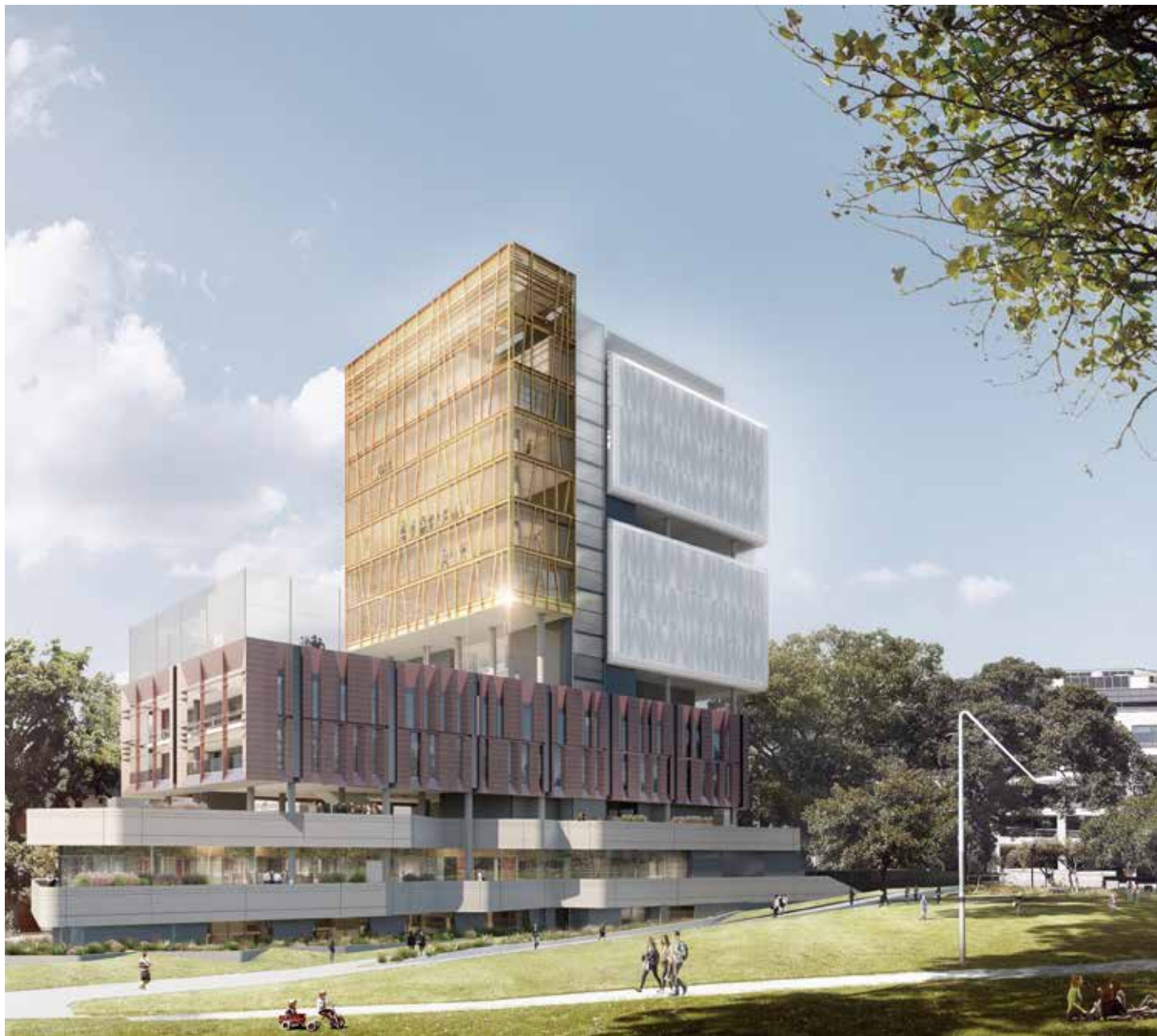
As part of the school's Week 1 Term 1 activities, identifiable Department of Education staff will be at the school on Wednesday 29 January from 8:00am to help parents, carers and students with directions.

Transport

From Wednesday 29 to Friday 31 January, traffic control personnel will be at the school to help direct students when they arrive in the morning and at the end of the day. Please follow all traffic control directions to ensure the safety of all students, teachers and visitors.

- There are bus stops on Cleveland and Chalmers Streets, a short walk from the school entrance, as shown on the map.
- Central Station is a 400 metre walk north along Chalmers Street from the school entrance.
- Information about bus routes and train timetables can be found at TfNSW website: <https://transportnsw.info>.
- The school has a separate entry from Prince Alfred Park for bicycles with secure bicycle facilities available. The bicycle entry point is shown on the map below.





Artist impression of the new Inner Sydney High School – view from Prince Alfred Park

Contact us

For more information about this project contact School Infrastructure NSW:

Website: schoolinfrastructure.nsw.gov.au/projects/i/inner-sydney-high-school.html

Email: schoolinfrastructure@det.nsw.edu.au

Phone: 1300 482 651

For information about school activities and operations, please contact the school directly:

Website: innersydneyhighschool.schools.nsw.gov.au

Email: innersydneyhighschool@det.nsw.edu.au

Phone: 0488 710 536