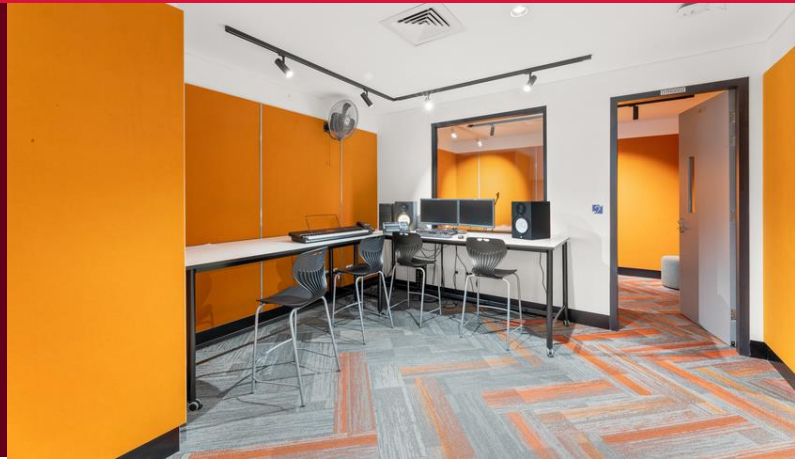


Lake Macquarie High School Project update June 2025

Image caption: example recording studio



Dear staff, parents and carers,

The NSW Government is committed to expanding high potential and gifted education (HPGE) opportunities in NSW public schools. Part of this work is a \$50 million investment into the HPGE Partner School program.

Under the program, Lake Macquarie High School will receive facility enhancements to accommodate increased enrolments, broaden educational opportunities and facilitate the delivery of tailored HPGE offerings. Work will happen in stages.

Stage 1

The contract for the majority of Stage 1 was recently awarded. Works are expected to start later in Term 2, 2025 and include:

- upgrade of the food technology space into a vocational education and training (VET) hospitality classroom
- upgrades to 2 woodwork rooms and 1 design technology room including storage to support vocational education and training (VET) programs
- upgrades to an art room
- new shade structure over the sports court
- provision of a marine studies laboratory and marine studies workshop.

The shade structure for the sports court is being manufactured and likely to be in place mid-Term 3.

The marine studies workshop is currently being procured. This work is expected to start in Term 3.

While work is taking place, there will be construction site hoarding, temporary barriers or fencing, enclosures, signage, some locked rooms or workers wearing personal protective equipment – in the vicinity of buildings B, C, E and on school grounds.

The upgrades listed above are expected to be completed within 2025.

Stage 2

These works are in the planning and design phase, with construction due to start in the 2025–26 summer holidays and continue into 2026:



Email: schoolinfrastructure@det.nsw.edu.au
Phone: 1300 482 651
schoolinfrastructure.nsw.gov.au

- school entrance refresh
- upgrades to a music recording space.

Removal of hazardous materials

As part of this upgrade, we need to remove and replace asbestos-containing wall and ceiling sheets in the Building C woodwork rooms during the upcoming winter school holidays.

There will be construction site hoarding, temporary fencing, enclosures, signage, locked rooms, restricted access, workers wearing personal protective equipment and air monitoring in place during this work.

Any work involving asbestos-containing materials will take place outside of school hours and be done in accordance with work health and safety laws and the NSW Department of Education's Asbestos Management Plan.

All work will be completed by licensed asbestos contractors and inspected by independent hygienists who will issue a clearance certificate before construction continues.

Hours of work

Work hours are between 7 am and 6 pm Monday to Friday, and 8 am and 1 pm on Saturday in accordance with Environmental Protection Authority construction times.

There will be some construction noise from the contractors working onsite during these times.

More information

We will keep the community updated and provide more information as it becomes available.

If you have any questions about this project, please contact the NSW Department of Education during business hours on the details below.

