

# Richmond High School

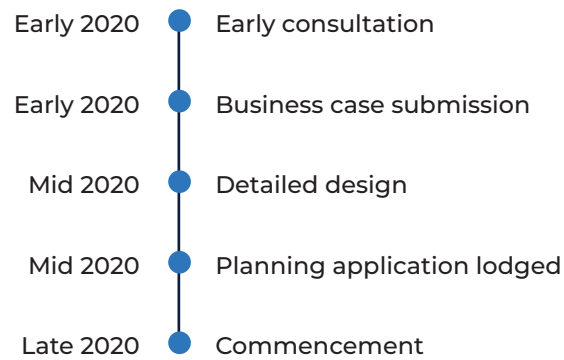
Design of an upgrade at Richmond High School is underway. The project proposal includes an upgrade to facilities with a focus on science, technology, environment and maths (STEM) and agricultural education. These facilities will support a new agricultural specialty stream, which will be assessed through a

rigorous selection process based on a portfolio and interview to determine student interest and potential in agricultural education. In addition, these facilities will support a new academic selective stream that will be managed by the High Performing Students Team.



Potential site locations for new STEM and agricultural facilities

## Project timeline



## Next steps

- Finalise and review community consultation outcomes
- Submit the business case to NSW Treasury

## Have your say

We are committed to working together with our school communities and other stakeholders to deliver the best possible learning facilities for students. Your feedback on this project is important to us.

Please visit the School Infrastructure NSW website for each project to provide your feedback through an online survey. The online surveys for these projects close on Monday 9 March 2020.

We will keep you, the local school communities and residents informed with project update newsletters, information booths and website updates.

**For more information contact:**  
School Infrastructure NSW  
Email: [schoolinfrastructure@det.nsw.edu.au](mailto:schoolinfrastructure@det.nsw.edu.au)  
Phone: 1300 482 651  
[www.schoolinfrastructure.nsw.gov.au](http://www.schoolinfrastructure.nsw.gov.au)



# Hurlstone Agricultural High School Centre of Excellence in agricultural education Richmond High School

Information pack  
February 2020



Example of a new science laboratory

The NSW Department of Education is implementing a new model for state-wide agricultural education, which includes:

### CENTRE OF EXCELLENCE (COE) IN AGRICULTURAL EDUCATION

- The CoE will deliver contemporary agricultural, science, technology, environment and maths education facilities to be used by students state-wide.

### HURLSTONE AGRICULTURAL HIGH SCHOOL

- The school at Glenfield will be retained at its existing location with an upgrade to boarding facilities and retaining the existing dairy facilities.

### RICHMOND HIGH SCHOOL

- New agricultural specialty stream and a new academic selective stream, supported by an upgrade to facilities with a focus on science, technology, environment and maths (STEM) and agricultural education.





# Investing in our schools

The NSW Government is investing \$6.7 billion over four years to deliver more than 190 new and upgraded schools to support communities across NSW. In addition, a record \$1.3 billion is being spent on school maintenance over five years. This is the largest investment in public education infrastructure in the history of NSW.

School Infrastructure NSW has been established by the NSW Government to deliver its multi-billion-dollar schools investment program.

# Hurlstone Agricultural High School

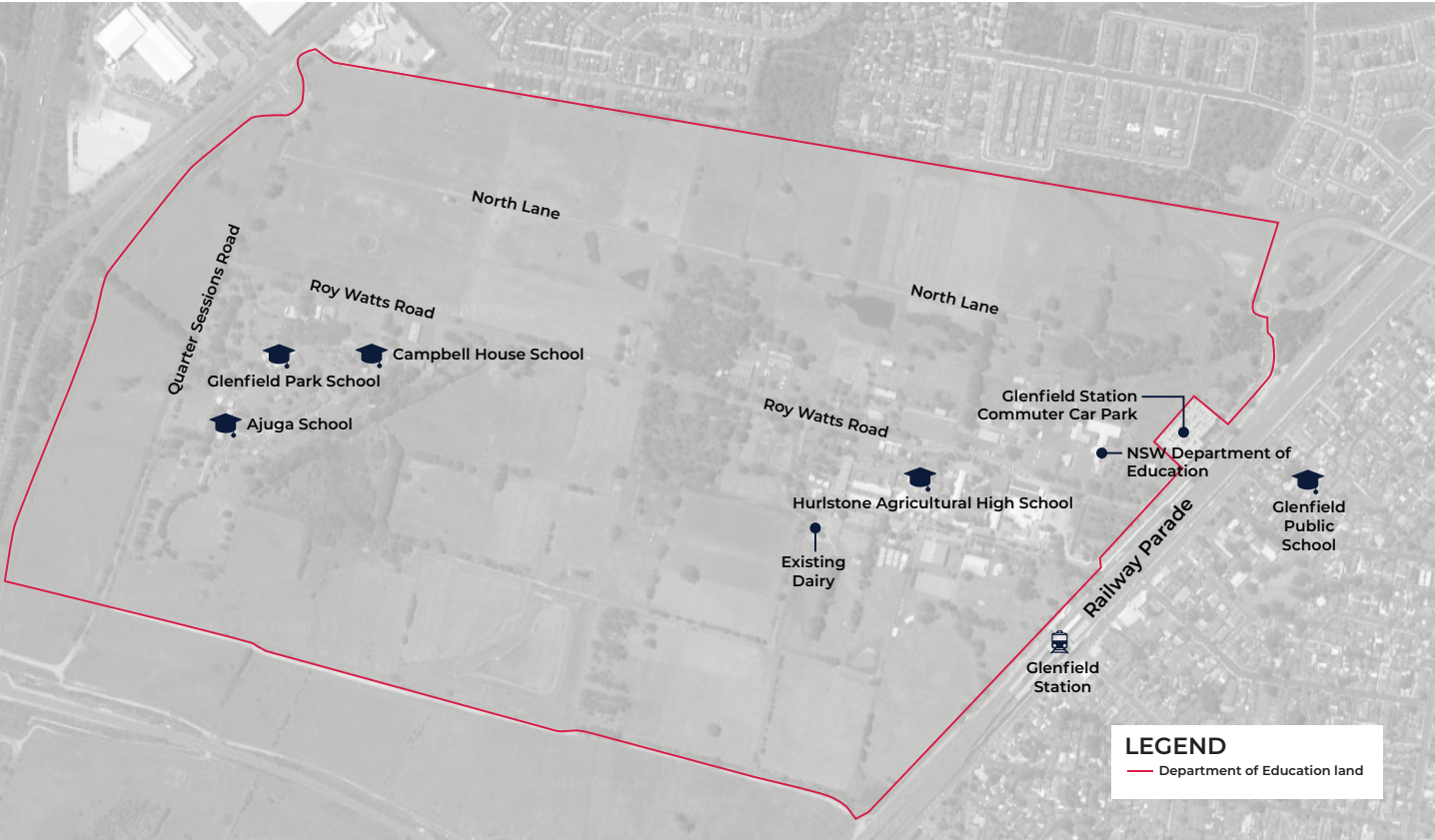
Hurlstone Agricultural High School will be retained as an agriculturally-focused selective high school in Glenfield.

The project proposal includes an upgrade to existing boarding facilities and retention of the existing dairy. The school will keep its name and stay at the Glenfield location as an academically selective, boarding agricultural high school.

The proposed boarding facilities will include a mix of boarding units to cater for the needs of students from years 7-12.

An upgrade to the school was previously completed and opened to students in early 2019. The previous upgrade delivered:

- Five new modern science laboratories
- Modern technology and applied studies facilities, including new innovative food and textiles and wood and metal learning spaces
- New and refurbished visual arts learning spaces
- A new central learning commons courtyard space.



Hurlstone Agricultural High School site context

# Centre of Excellence in agricultural education

Design is underway for a Centre of Excellence (CoE) in agricultural education co-located at the Western Sydney University Hawkesbury campus.


The CoE will be used as a state-wide resource, delivering world class agricultural and science, technology, engineering and mathematics (STEM) education. Short term residential accommodation is also proposed to enable the centre to be accessed by rural, regional and overseas students and teaching professionals.

The proposed facilities may include:

**Agriculture labs and science labs**

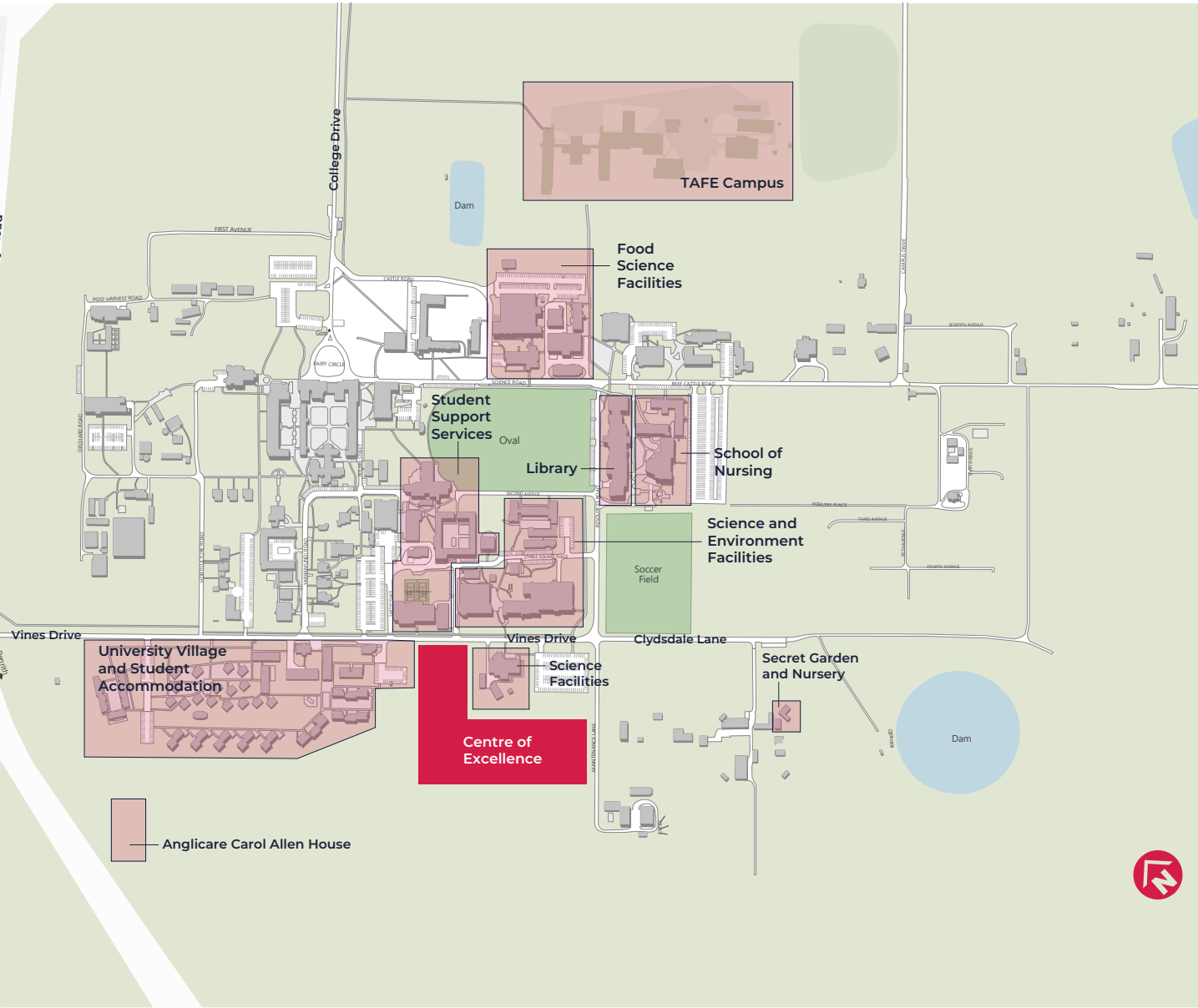
**Aboriginal farming enterprise (in partnership with community and industry)**

**Administrative**

**Pods for partnership work with industry e.g. vertical farming**

**Precision farming technology space**

**Flexible learning and collaborative spaces**



Location of the Centre of Excellence at WSU Hawkesbury