

# Hurlstone Agricultural High School

Works notification | 30 May 2023

The NSW Department of Education is upgrading the boarding facilities and building a new farm hub at Hurlstone Agricultural High School to support the local community.

## Main works construction starting

Following our Development Application approval and completion of site establishment works, main works construction will start Friday 2 June 2023. The works will include bulk earthworks, spoil removal, in-ground service installations, new building footings and tower crane installation.

## Management of construction impacts

For information about how we manage construction impacts please visit our website [edu.nsw.link/ConstructionImpacts](https://edu.nsw.link/ConstructionImpacts) or scan the QR code. All construction vehicles will continue to use Z Bend after entering from Roy Watts Road. Traffic management and traffic controllers will be used where required to manage entry and exit of vehicles to and from the construction site for the safety of students, staff, the local community and workers. Vehicles will give way to pedestrians at all times and deliveries will be scheduled to occur outside school pick up and drop off times where possible.



All construction zones have been separated from the school with Class A hoarding.

## Asbestos removal works

During the remediation works which started on Thursday 25 May 2023, we found more asbestos-containing material on site and have expanded the remediation area to include Dairy Lane (see map overleaf).

The material on the site has been confirmed as bonded asbestos, which means it is attached to other materials such as cement or vinyl and cannot be crumbled by light pressure. We will continue with the remediation that was started last week and we now anticipate this to be completed by 31 July 2023.

Work will be done in accordance with SafeWork NSW regulations and the NSW Department of Education's Asbestos Management Plan. All work will be completed by licensed and accredited asbestos contractors and monitored by occupational hygienists strictly following all applicable legislation, regulations, policies and guidelines. The area will be inspected to ensure it has been fully remediated and the school will receive a clearance certificate before demolition works begin.

If further asbestos containing materials are uncovered during demolition activities, work will stop in the area until it has been removed in accordance with the unexpected finds procedure within the site's hazardous materials management plan.

The health, safety, and wellbeing of the school and the local community are our highest priority, and we will minimise impacts on the community at every opportunity.



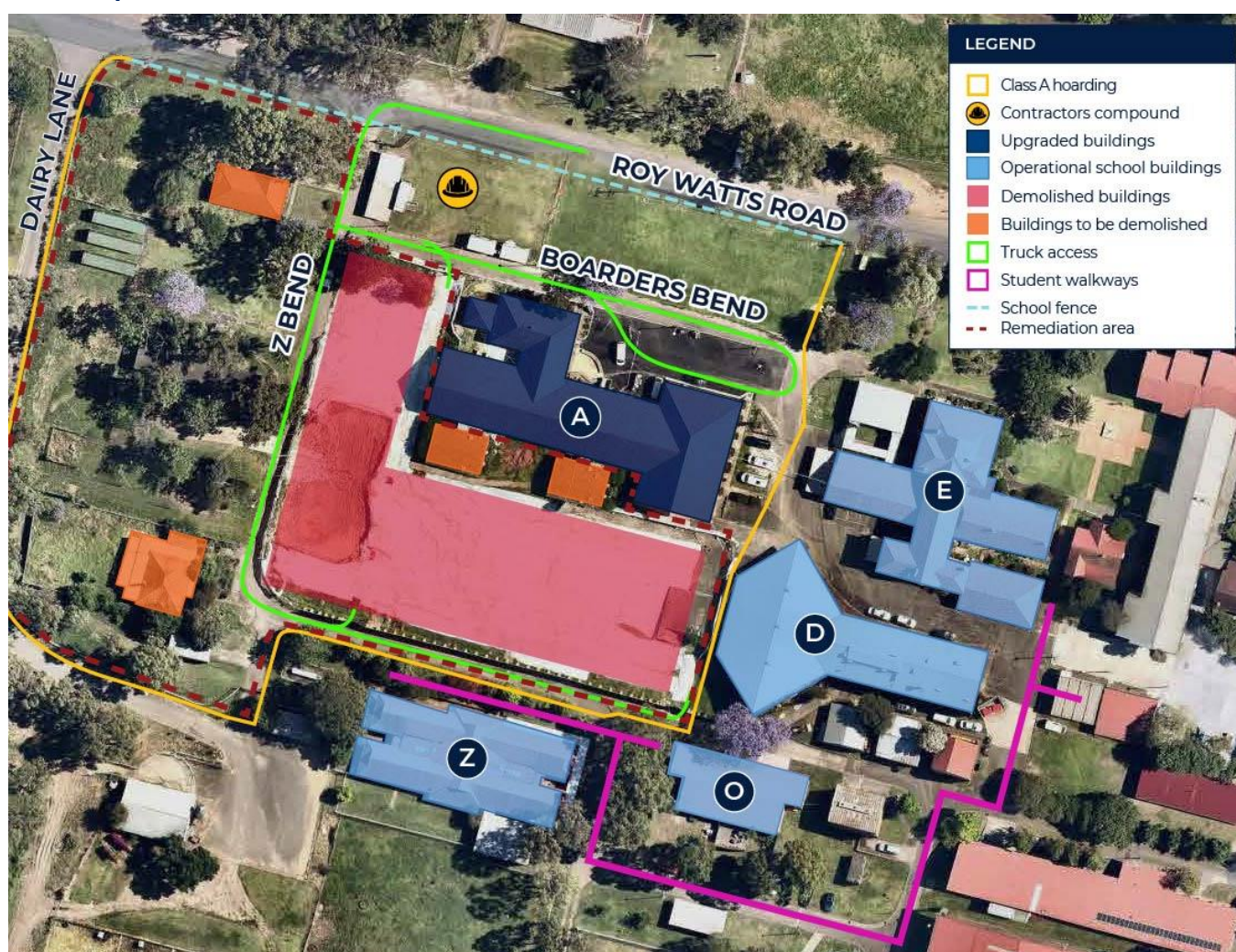
## Working hours

- 7am to 6pm Monday to Friday
- 8am to 5pm Saturdays
- Work will be paused for break periods in line with school requirements.
- No work will only occur on Saturdays, Sundays or public holidays unless notified.

## Contact us

If you have any questions about this work you can contact School Infrastructure NSW via email at [schoolinfrastructure@det.nsw.edu.au](mailto:schoolinfrastructure@det.nsw.edu.au) or during business hours on 1300 482 651. Thank you for your patience while we deliver this important school infrastructure.

## Site map



For a Translation and Interpreting Service call 131 450 and ask them to call the Department of Education - School Infrastructure NSW on 1300 482 651.

