

Project overview

A legacy of excellence and agriculture

A project is underway to upgrade Hurlstone Agricultural High School. The project will deliver:



New boarding facilities



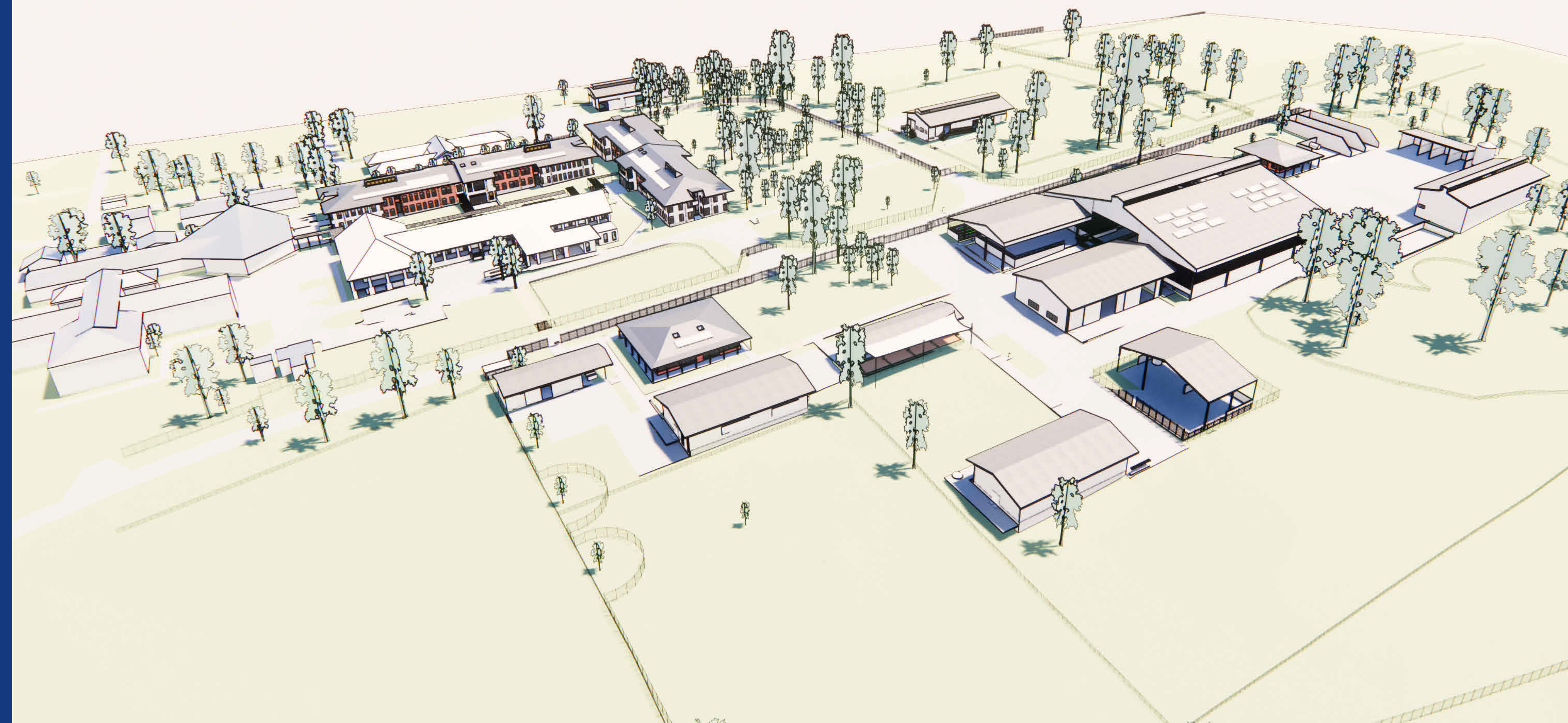
New farm hub

The NSW Government has invested more than \$60 million to continue the school's long history of excellence.

This project forms part of the NSW Government's model for agricultural education, ensuring students across the state continue to have access to high-quality agricultural education.

In 2019, a major redevelopment of the school was also completed to upgrade the Science, Technology, Engineering, Arts and Mathematics (STEAM) facilities.

Hurlstone Agricultural High School will proudly remain an academically selective, agriculturally focused, boarding school.



Concept design view looking south-west over new farm hub, across Roy Watts Rd, to the new boarding dormitory buildings

Hurlstone Agricultural High School

For more information phone: 1300 482 651
Email: schoolinfrastructure@det.nsw.edu.au
schoolinfrastructure.nsw.gov.au

Timeline

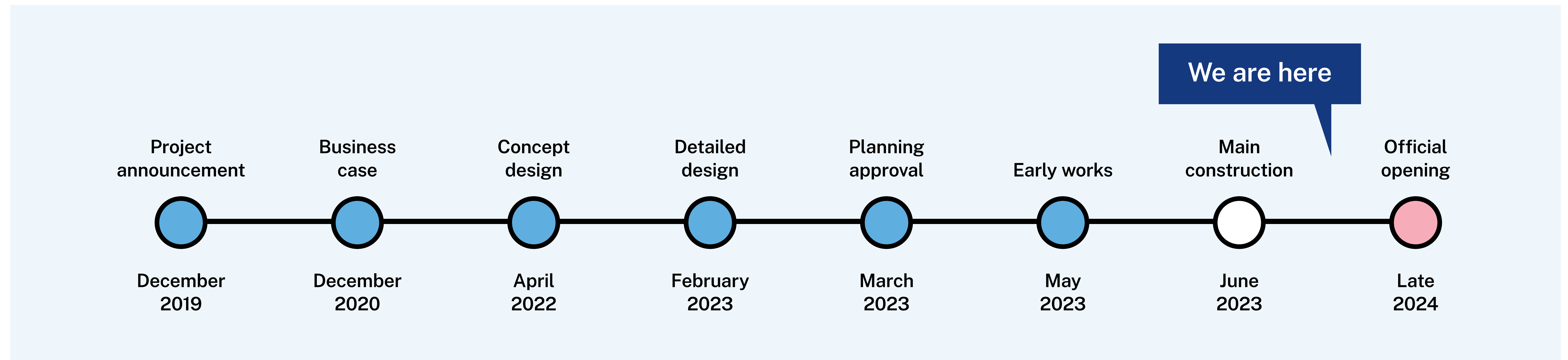
Construction is advancing – the finish line is in sight

The project is scheduled for completion in late 2024.

The main phase of construction commenced in mid-2023 for both the new farm hub and boarding facilities.

Construction works are progressing on track with the project delivery timetable.

Only one significant project milestone remains: official opening of the new facilities.



Hurlstone Agricultural High School

For more information phone: 1300 482 651
Email: schoolinfrastructure@det.nsw.edu.au
schoolinfrastructure.nsw.gov.au

Site plan

Revised school building layout to support contemporary learning

Centralised location of the new farm hub will improve school operations and maximise learning opportunities.



School building layout after project completion

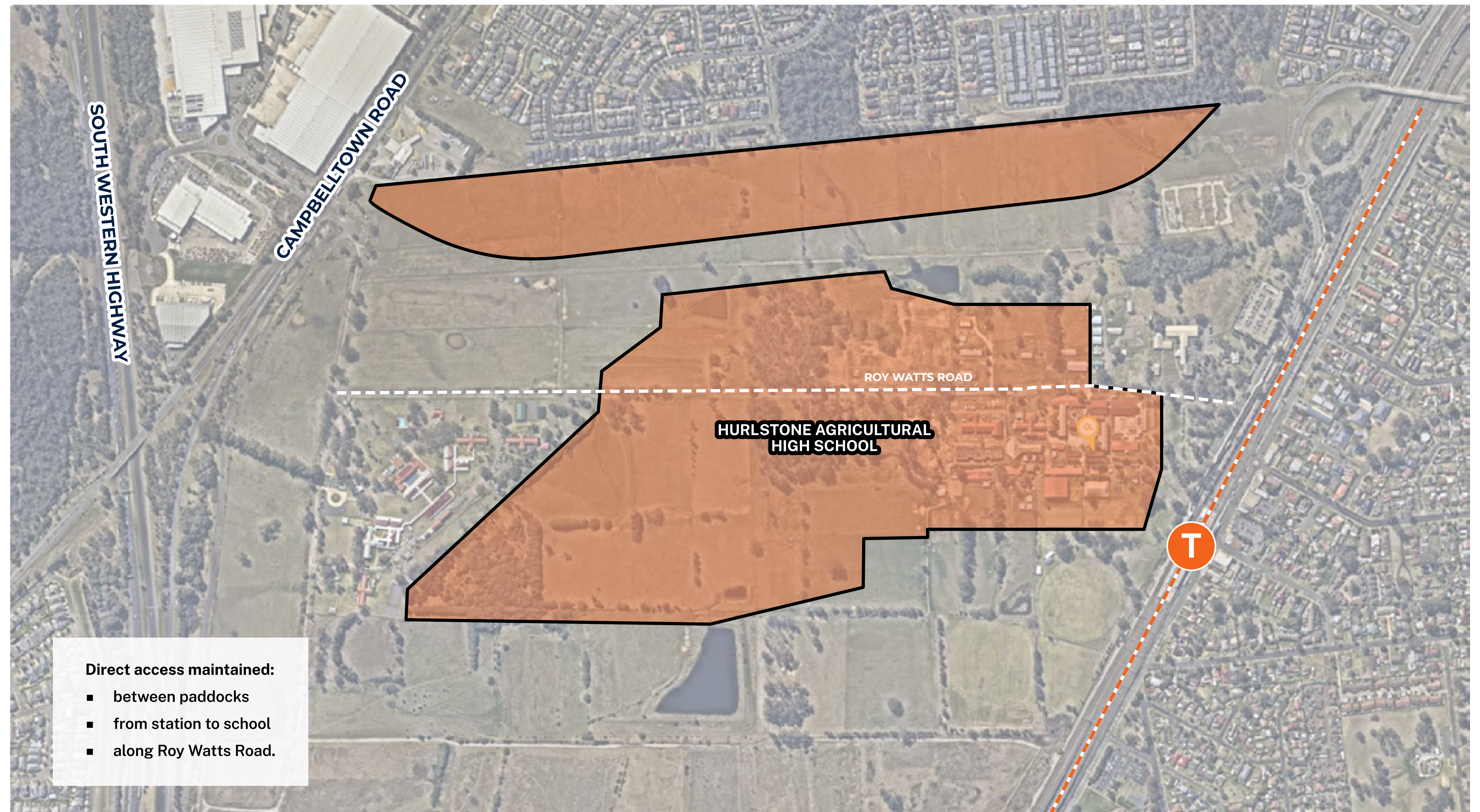
Hurlstone Agricultural High School

For more information phone: 1300 482 651
 Email: schoolinfrastructure@det.nsw.edu.au
schoolinfrastructure.nsw.gov.au



Ample farmland to support school curriculum – today and beyond

Consultation with key school stakeholders, industry and agricultural experts was completed throughout the planning and design process to ensure the amount of agricultural land supports the present and future school curriculum.



Map of Hurlstone Agricultural High School land after project completion

Hurlstone Agricultural High School

For more information phone: 1300 482 651
Email: schoolinfrastructure@det.nsw.edu.au
schoolinfrastructure.nsw.gov.au

Revitalised boarding facilities for improved student experience

Features

- two new dormitory buildings
- 180 bed student accommodation
- new dorm monitor rooms
- new senior and junior common rooms
- new bathroom and laundry facilities
- new overnight accommodation for staff
- new permanent staff residences



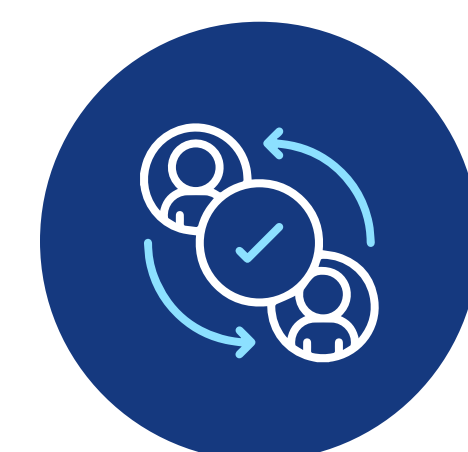
Concept design of new boarding buildings, showing new buildings, outdoor courtyard and common areas



Modern,
compatible design



Comfortable and
attractive



Improved social
interaction



Fosters community
building

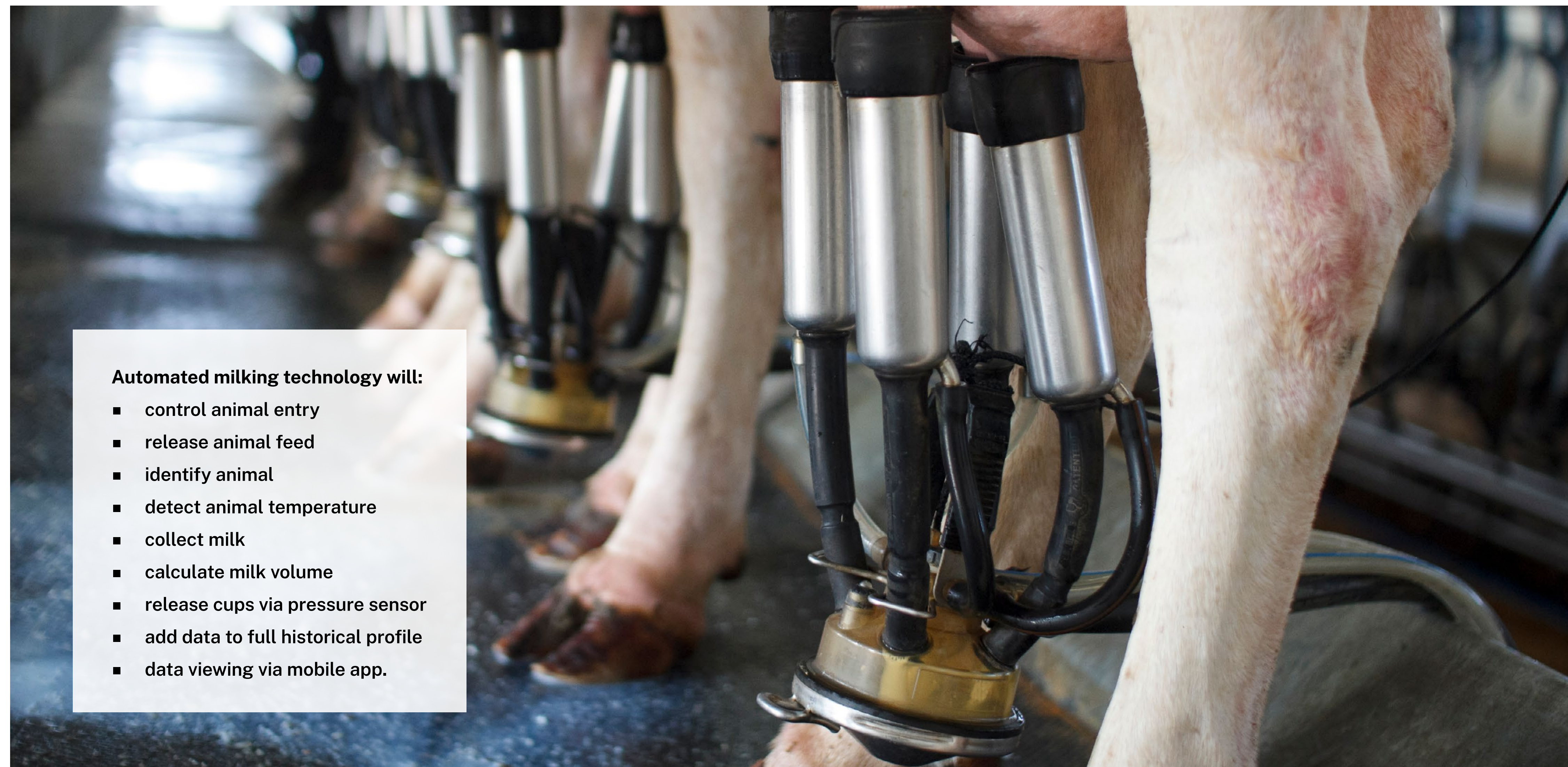


Support student
wellbeing

Hurlstone Agricultural High School

For more information phone: 1300 482 651
Email: schoolinfrastructure@det.nsw.edu.au
schoolinfrastructure.nsw.gov.au

Modern farm facilities for the next generation of agricultural leaders



Features

- new dairy shed and milking parlour
- new co-located learning space
- new calf, beef, pig and chicken sheds
- new commodity sheds & storage facilities
- new equipment
- new irrigation systems
- relocation of sheep shed
- expanded hydroponic facilities.

Automated milking technology will:

- control animal entry
- release animal feed
- identify animal
- detect animal temperature
- collect milk
- calculate milk volume
- release cups via pressure sensor
- add data to full historical profile
- data viewing via mobile app.



Modern technology,
contemporary
facilities



Centralised
location and
design



More efficient
farm operations



Increased student
and animal
interaction



More hands
on farming
opportunities

Hurlstone Agricultural High School

For more information phone: 1300 482 651
Email: schoolinfrastructure@det.nsw.edu.au
schoolinfrastructure.nsw.gov.au

Works completed and underway

Excellent progress has been made since main works construction started mid-2023.

Boarding facilities

Weatherproofing – external structure of new buildings completed and closed off to the elements in December

New building framework – concrete and steel structures of floors, walls, roofs in place, and service infrastructure installed

Refurbishment of existing building – completed and awaiting use as permanent staff residences after project completion

Demolition of old buildings – completed to make way for new boarding dormitory buildings



New building framework emerging (Oct '23)

Farm hub

Minor design upgrade – selected design elements are being updated for closer alignment with curriculum and improved school operations

New farm buildings – construction of cattle barn, machinery shed, commodity shed underway, structures completed in December

Temporary farm facilities – chicken sheds, multi-purpose learning space and farm office established for use during construction

Site establishment works – earthworks, building foundations and in ground services installation completed, old sheds demolished



Construction of new farm buildings (Oct '23)

Hurlstone Agricultural High School

For more information phone: 1300 482 651
Email: schoolinfrastructure@det.nsw.edu.au
schoolinfrastructure.nsw.gov.au

Looking forward – what to expect in 2024

An information session to prepare the school community for opening of the new facilities will be held mid-2024.



Construction

Construction works will continue uninterrupted from now until project completion.



Consultation

We'll continue to work closely with the school to prevent disruptions and ensure smooth delivery.



Communication

We'll keep the school and local communities informed, providing all the information you need.



Fencing installation

Landcom will install a fence along the internal boundaries of its land in early 2024.



Minor design upgrade

Approval of minor design edits from Campbelltown City Council is expected in early 2024.



Sports facility

Planning and consultation will continue for relocation of the sports oval and storage facility ready for 2025.



Commissioning

Commissioning meetings to prepare school operations for use of new facilities will begin December 2024.



Boarding accommodation

The present aim is for students to begin using the facilities from the start of Term 4 2024.



Opening ceremony

The official opening ceremony –including smoking ceremony –to celebrate project completion will take place in late 2024.

Hurlstone Agricultural High School

For more information phone: 1300 482 651
Email: schoolinfrastructure@det.nsw.edu.au
schoolinfrastructure.nsw.gov.au

Closer alignment of farm design with school curriculum

These changes represent a win-win for both the school and students.

Minor edits to the design of the new farm hub are being made to enhance student learning outcomes through richer, more desirable experiences.

As a bonus, these minor changes will allow easier and more flexible management of farm operations, benefiting school operations.

These changes follow months of in-depth, up-close consultation with key school stakeholders. Each modification has received the school's tick of approval.

In December 2023, a request will be submitted to Campbelltown City Council to adjust the existing Development Approval. This process will not delay project timelines.

What's changed?

- **Milking technology**
Change to semi-automated milking technology
- **Hydroponics**
Expansion of hydroponics capacity and removal of aquaculture
- **Internal layouts**
Adjustment to the internal layouts of some buildings



Hurlstone Agricultural High School

For more information phone: 1300 482 651
Email: schoolinfrastructure@det.nsw.edu.au
schoolinfrastructure.nsw.gov.au

Sports oval relocation

A phased transition into our new sports facility

Students will benefit from a new sports oval and PDHPE storage facility as part of the school upgrade underway.

During 2024, the school will retain access to the existing sports facility without change.

Beginning Term 1 2025, the sports facility will move to a new location.

In close consultation with the school, a number of options are presently being developed and considered.



The department is working closely with key school stakeholders to ensure the location of the new sports facilities meets school and community needs.

Some potential locations for new sports facility



Hurlstone Agricultural High School

For more information phone: 1300 482 651
Email: schoolinfrastructure@det.nsw.edu.au
schoolinfrastructure.nsw.gov.au

Community consultation

Community input every step of the journey

Input from the school and local communities has been integral to this important school upgrade.

At each step, the NSW Department of Education has listened to the community and adjusted the project plan to better meet community needs.

Since project announcement, the department has:

- responded to over 1000 community enquiries
- convened countless discussions with experts
- collaborated and worked closely with school staff
- held community workshops, information sessions

Community input has heavily shaped the direction and features of this project.

The result is almost \$100 million investment in the school over the past decade by the NSW Government.

Community input remains vital to project success.

Contact the community engagement team anytime to ask questions or share feedback.



One of many farm design review sessions held between the project team and the school's experts

Hurlstone Agricultural High School

For more information phone: 1300 482 651
Email: schoolinfrastructure@det.nsw.edu.au
schoolinfrastructure.nsw.gov.au

Glenfield Education Precinct is changing with the local community

Glenfield's heritage as one of South-West Sydney's premier education destinations has been secured.

Hurlstone Agricultural High School

Future secured as an academically selective, agriculturally focused, boarding school

Campbell House School, Glenfield Park School and Ajuga School

Remaining without change as integral part of education precinct

Glenfield Education Office

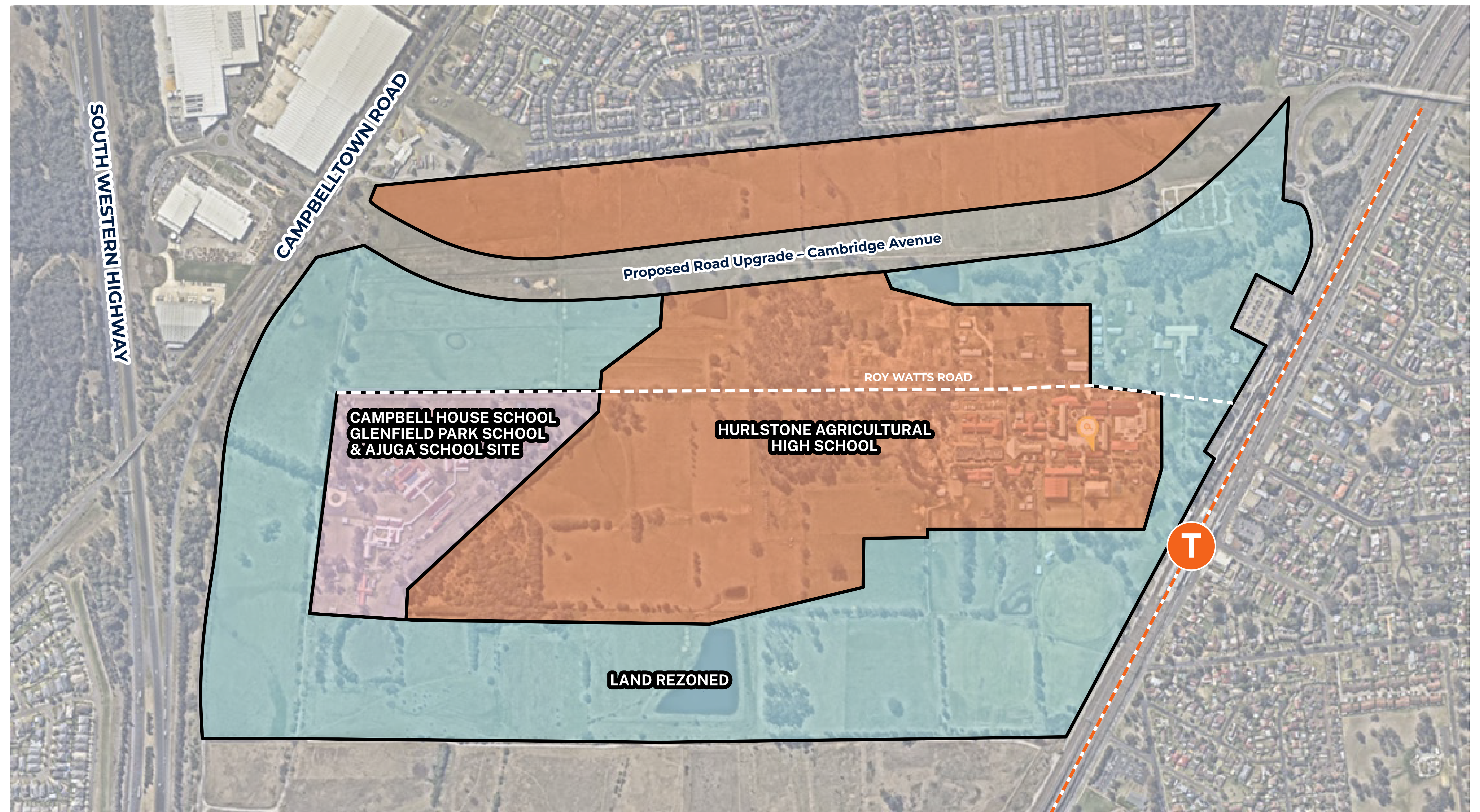
Moving to a new location in a refurbished facility located in Liverpool

Glenfield Return from Suspension Centre

Moving to a new location in a refurbished facility situated in the education precinct

Land rezoned

Land rezoned in 2021 for new homes, shared playing fields, green and public open space



Map of Glenfield Education Precinct after project completion

Hurlstone Agricultural High School

For more information phone: 1300 482 651
Email: schoolinfrastructure@det.nsw.edu.au
schoolinfrastructure.nsw.gov.au