

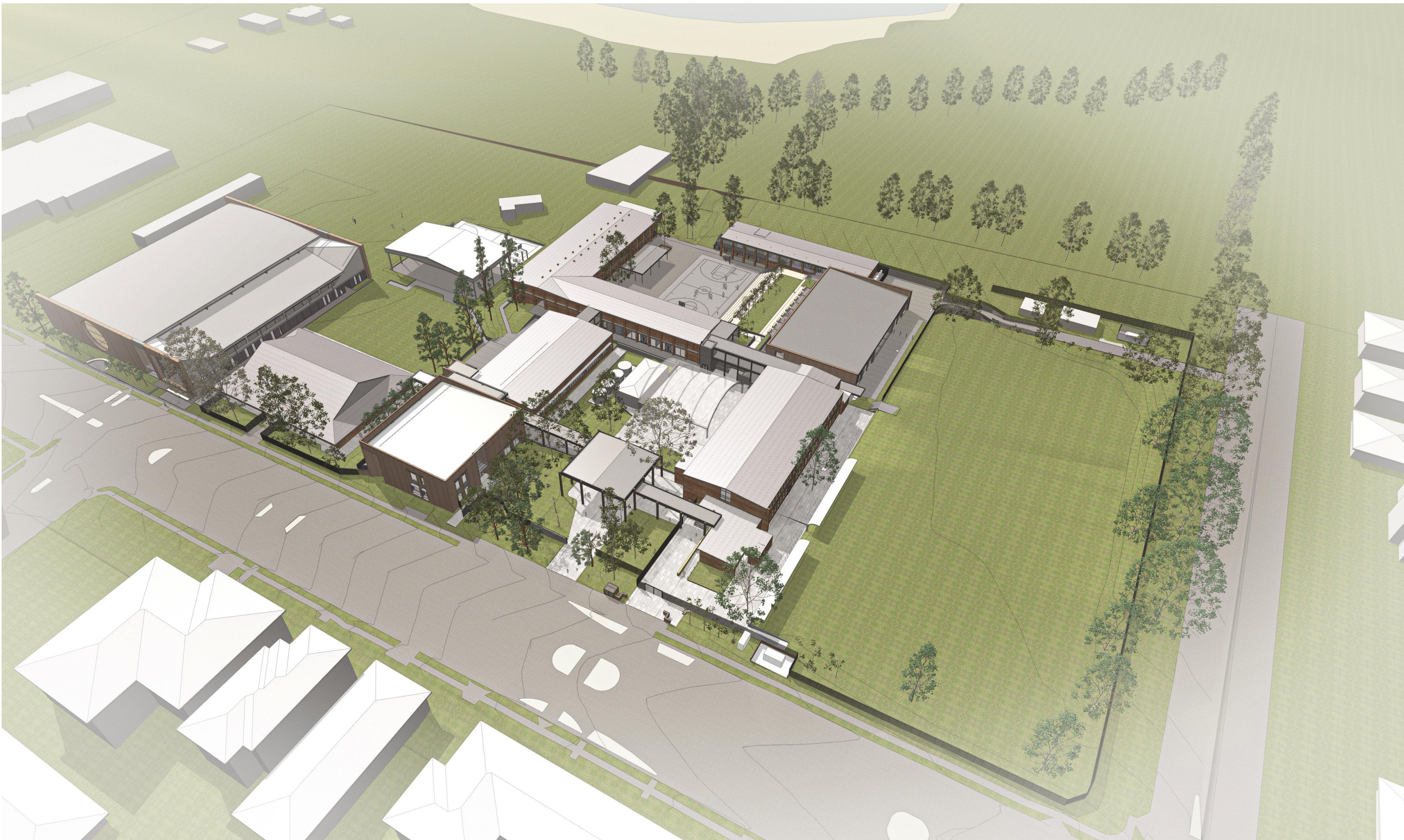
HASTINGS SECONDARY COLLEGE

PORT MACQUARIE

SSDA LANDSCAPE DOCUMENTATION SET

DRAWING LIST

fjmt Landscape SSDA Set			
800000 Landscape			
	SSDA-800000	Cover Sheet	04
	SSDA-800001	Site Plan	04
	SSDA-800002	Tree Management Plan - Tree Removal	03
	SSDA-800003	Tree Management Plan - Proposed	04
810000 Landscape General Arrangement Plans			
	SSDA-810000	Landscape Plan - Zone 1 School Entry & CAPA	04
	SSDA-810001	Landscape Plan - Zone 2 PCYC	05
830000 Landscape Sections			
	SSDA-830000	Landscape Sections - 1: 50 @ A1	04
850000 SSDA Landscape 3D Perspective Views			
	SSDA-850000	Entry Perspective Views	
	SSDA-850501	OPT 1 - Landscape Plan - Zone 1 School Entry & CAPA	02
880000 Landscape Planting Plans			
	SSDA-880001	Planting Plan - Zone 1 School Entry & CAPA	03
	SSDA-880002	Planting Plan - Zone 2 PCYC	03
	SSDA-880050	Planting Palette and Schedule - 1 of 2	03
	SSDA-880051	Planting Palette and Schedule - 2 of 2	02



Material and Finishes Schedule

CODE	ITEM	Description
ASP1	Asphalt pavement	30mm thick AC10 wearing course to EFGS requirements laid over prime coat / compacted base course to civil engineers detail
BAL1	Balustrade	Vertical Blade Slat Fence balustrade to timber decks and ramps - 1500 high powder coated steel Powder coat finish-Dulux - Monument Satin
BNCH1	Bench Type 1	Precast Seating Straight Plinth Bench, Reinforced concrete class 2C colour to match PAV1
CON1	Concrete Pavement Type 1	Exposed Aggregate Concrete with CCS Full depth colour tint (banding as shown PAV1) - Finish: Barossa Moonscape or similar subject to approval
STAIR1	Concrete Stairs	Concrete to match CON1 mix Finish: Sandblast to match paver and achieve required slip rating Stair detail with shadow gap (rebatel) between tread and riser refer detail. Subject to sample panel review and approval Allow for Setdown/cast-in of precast tactile and nosing. Granite tile stair nosing insert. Colour: Gunmetal Sol bias to provide compliant contrast
EDG1	Edge type 1	Weathered steel edge 2.5mm thickness, 75mm height, maxim 30mm above soil. Installation: Flush to adjacent surfaces and refer to manufacturer specification
EDG2	Edge type 2	Weathered steel edge 2mm thickness, 580mm height, maxim 30mm above soil. Installation: Flush to adjacent surfaces and refer to manufacturer specification
EXGPO	External GPO	General Power Outlet double external lockable waterproof
FN2	Vertical Blade Slat fence	Vertical Blade Slat Fence - 2150 high powder coated steel Powder coat finish-Dulux - Monument Satin
FP1	Flagpole	Flagpole - With Anti Vandal Internal Halyard system 7.5M tall powder coated aluminium 100DIA tapering to 60mm top installed to manufacturers detail (White)
GA1	Gate	Single swing external Egress gates - to match in to vertical blade fence (subject to approval by Landscape Architect) Powder coat finish: Dulux - Monument Satin
GA2	Gate	Double swing external Egress gates - to match in to vertical blade fence (subject to approval by Landscape Architect) Powder coat finish: Dulux - Monument Satin
GA3	Gate	Double slider external Egress gates - to match in to vertical blade fence (subject to approval by Landscape Architect) Powder coat finish: Dulux - Monument Satin
GRD1	Grated Drain	Supply and install 150 wide trench grate - with Cast Iron heel safe anti-slip grate. Connect to stormwater system.
GRV1	Gravel	Gravel edge of 20mm scoria at minimum 50mm
HRX1	External Single Handrail	42mm Diameter Stainless Steel handrail and stanchions
HRX2	External Double Handrail	Central 42mm Diameter SS handrail and stanchions
L1	Handrail lighting	LED light to illuminate stairs integrated into underside of tube rail
MPB1	Mass planting 1	Garden profile on grade 300mm deep imported top soil approved validated material over cultivated existing sub grade and marker layer. Mulch topping Euchi mulch or similar. Irrigated.
MPB2	Mass planting 2	Tree pits 850mm deep garden profile imported top soil approved validated material over cultivated sub grade and marker layer. Mulch topping Euchi mulch or similar. Irrigated.
MPB3	Mass planting 3	Over existing soil 200mm deep imported soil approved validated (fine aggregate based) material over marker layer to be approved by arborist
MPB4	Mass planting 4	Tree pits 600mm deep garden profile
MUL1	Mulch Type 1	Supply and install organic mulch 75mm thick to all garden areas. Euchi mulch or similar approved.
EXPAV	Existing Paving to be retained	Existing Paving to be retained
PAV1	Precast bands	Precast concrete paving on concrete sub base. Finish: Fleece, Shotblast
RW1	Wall Type 1	Seating Steps Sandstone block Grade 1 rough sawn (nom 1000 x 500 x 500h; 2000 x 500 x 500) Cut smooth top face for seating height mortar joints colour match
RW2	Wall Type 2	Reinforced Insitu Concrete wall Class 2c Off form with off white cement
TRF	Turf	Couch (100mm) Turf (or similar approved) 50mm min. cultivated and organic compost underlay on sub grade. Refer school supplier Turf blend
TAP	Hose tap	Non potable water vandal proof hose tap connection for irrigation and wash down Vandal proof
IRRIGATION	Drip irrigation	To all new planting and grass areas Equal to 15mm drip size pressure compensating in line drip tube 2 Lh Stout at 350mm eater connection, solenoids, soil sensor, back flow device Hardwired controller
TD1	Timber Decking	140 x 32 Accoya Timber Finish: Deluxe Intergrain Ultraclear Exterior in Mushroom or similar approved
TB1	Platform benches	Avalon Platform Bench 1200mm long x 1200 wide Spotted Gum Timber Battens Powdercoated Frame: Woodland Grey
TGSI	Tactile Indicators	Stainless steel tactile indicators. To provide compliant contrast
W1	Wall lighting	Round recessed wall light to illuminate stairs either side of each stair to meet compliant safety lighting

BOTANICAL NAME	COMMON NAME	INDICATIVE CONTAINER SIZE	Plant Size	SPACING (per sq.m)	QUANTITY
TREES					
Backhousia citricolora	Lemon Myrtle	75L		AS SHOWN	3
Banksia integrifolia	Coast Banksia	75L		AS SHOWN	16
Citrus australasica	Blueberry Ash	75L		AS SHOWN	3
Elaeocarpus reticulatus	Blueberry Ash	75L		AS SHOWN	3
Eucalyptus grandis	Rose Gum	75L		AS SHOWN	3
Eucalyptus microcorys	Tallowood	75L		AS SHOWN	3
Eucalyptus pulverulenta	Silver Leaved Mountain Gum	75L		AS SHOWN	3
Eucalyptus robusta	Swamp Mahogany	75L		AS SHOWN	5
Exocarpus cupressiformus	Cherry Ballarat	75L		AS SHOWN	3
Livistona australis	Cabbage-Tree Palm	400L		AS SHOWN	2
Maleituca quinquenervia	Broad-Leaved Paperbark	75L		AS SHOWN	9
Syzygium australe	Lilly Pilly	75L		AS SHOWN	3
PM03 - Planting Mix 03 Native Entry Planting					
Total Area (sq.m)					
Native Entry Planting		885			
Coastal Headland					
Casuarina glauca Coustin lt (Native)	Dwarf Sheak	150mm	0.4 (w) x 0.1m	2	295
Dianella caerulea (Indigenous)	Blue Flax Lily	150mm	0.3 (w) x 0.4m	2	295
Lambertia formosa (Indigenous)	Mountain Devil	300mm	1.5 (w) x 1.5m	0.2	30
Mitella rubrifolia (Indigenous)	Heath Mitella	300mm	0.4 (w) x 0.5m	4	590
Pultanea maritima (Indigenous)	Coastal Headland Pea	150mm	0.4 (w) x 0.4m	4	590
Viola hederacea (Native)	Native Violet	150mm	0.4 (w) x 0.5m	4	590
PM04 - Planting Mix 04 Littoral Rainforest					
Native Entry Planting		Total Area (sq.m)			
Native Entry Planting		646.5			
Trees					
Linosyadex monostachya	Walking Stick Palm	300mm	1.3 (w) x 3m H	AS SHOWN	16
Large Shrubs					
Hibiscus splendens	Pink Hibiscus	300mm	3 (w) x 4m H	AS SHOWN	4
Malastoma affine	Native Lassandra	300mm	1.5 (w) x 2m H	AS SHOWN	1
Tabernaemontana Pandacagui	Banana Bush	300mm	2 (w) x 2m H	AS SHOWN	12
Tasmania insipida	Brush Pepperbush	300mm	2.5 (w) x 2.4m	AS SHOWN	4
Small - Medium Shrubs					
Alpinia anandrelliana	Native Ginger	300mm	1.5 (w) x 2m H	0.25	32
Adiantum formosum	Blackstem	300mm	0.4 (w) x 0.3m	2	259
Adiantum hispidum	Rough Maidenhair	300mm	0.4 (w) x 0.3m	2	259
Asplenium nidus	Brd's Nest Fern	300mm	0.4 (w) x 0.3m	2	259
Groundcover					
Viola hederacea (Native)	Native Violet	150mm	0.4 (w) x 0.5m	3	388
Planting G Fences (FN) and Balustrades (BAL1) CAPA					
Total Linear Meter: 54 lin. M					
Callerya australis	Blunt Wateria	200mm	2 (w) x 10m H	1 per linear m	54
Pandora pandorana	Wonga Wonga Vine	200mm	2 (w) x 10m H	1 per linear m	54

○

GENERAL NOTES

- ALL DIMENSIONS AND EXISTING CONDITIONS SHALL BE CHECKED AND VERIFIED BY THE CONTRACTOR BEFORE PROCEEDING WITH THE WORK.
- ALL LEVELS RELATIVE TO AUSTRALIAN HEIGHT DATUM.
- DO NOT SCALE DRAWINGS
- USE FIGURED DIMENSIONS ONLY.

legend

04	23/8/21	SSDA	GF	
03	14/4/21	SSDA	MJ	
02	23/2/21	Draft SSDA 02	KT	
01	12/2/21	Draft SSDA	MJ	
rev	date	name	by	chk

fjmt studio architecture interiors landscape urban community
sydney melbourne uk
Level 5, 70 King Street t +61 2 9251 7077 w fjmtstudio.com

fjmt

project
Hastings Schools Port Macquarie
Hastings Secondary College
Port Macquarie NSW 2444

title
Landscape
Cover Sheet

scale	Not to Scale	first issued	12/2/21
project code	sheet no.	revision	
HSPM	SSDA-800000	04	



051020

051020

051020

051020

GENERAL NOTES

ALL DIMENSIONS AND EXISTING CONDITIONS SHALL BE CHECKED AND VERIFIED BY THE CONTRACTOR BEFORE PROCEEDING WITH THE WORK.

ALL LEVELS RELATIVE TO AUSTRALIAN HEIGHT DATUM.

DO NOT SCALE DRAWINGS.

USE FIGURED DIMENSIONS ONLY.

legend

No. 18-20

+27.190ex

+30.600

TREE ID#

TREE ID#

SITE BOUNDARY

EXISTING SPOT LEVEL

PROPOSED SPOT LEVEL

EXISTING TREE TO BE RETAINED IN ACCORDANCE WITH ARBORCULTURAL ASSESSMENT

EXISTING TREE TO BE REMOVED

No. 24

No. 26

No. 28

No. 32

No. 34

No. 36

03	23/8/21	SSDA	GF
02	14/4/21	SSDA	WJ
01	26/3/21	SSDA	KT
rev	date	name	by

fjmt studio architecture interiors landscape urban community
sydney melbourne uk
Level 5, 70 King Street t +61 2 9251 7077 w fjmtstudio.com

project
Hastings Schools Port Macquarie
Hastings Secondary College
Port Macquarie NSW 2444

title
Landscape
Tree Management Plan - Tree Removal

scale	1:500 @ A1	first issued	26/3/21
project code	sheet no.	revision	
HSPM	SSDA-800002	03	

No. 37

No. 42



GENERAL NOTES

- ALL DIMENSIONS AND EXISTING CONDITIONS SHALL BE CHECKED AND VERIFIED BY THE CONTRACTOR BEFORE PROCEEDING WITH THE WORK.
- ALL LEVELS RELATIVE TO AUSTRALIAN HEIGHT DATUM.
- DO NOT SCALE DRAWINGS.
- USE FIGURED DIMENSIONS ONLY.

- Legend
- SITE BOUNDARY
 - +27.190ex EXISTING SPOT LEVEL
 - +30.600 PROPOSED SPOT LEVEL
 - TREE ID# EXISTING TREE TO BE RETAINED IN ACCORDANCE WITH ARBORICULTURAL ASSESSMENT
 - TREE ID# EXISTING TREE TO BE REMOVED
 - PROPOSED TREES
 - STRUCTURAL ROOT ZONE
 - TREE PROTECTION ZONE
 - NOMINAL ELEC/HYD SERVICES TRENCHING ZONE
Note: Detailed site investigation to be undertaken to determine pathway to ensure proposed tree retention.
 - NOMINAL STORMWATER SERVICES TRENCHING ZONE
Note: Detailed site investigation to be undertaken to determine pathway to ensure proposed tree retention.

TREE PROTECTION

In order to ensure the retention of the trees to be retained the following measures are to be taken in accordance with the Arboricultural Assessment Report:

All detailed architectural, building, engineering (structural, stormwater and drainage, services) and landscape documentation is to be developed to show the retention of these trees.

A qualified site arborist is to be engaged for the duration of the works to administer compliance with the conditions relating to trees on the site, with all the site staff to adhere to the arborist's instructions.

The trees are to be physically protected by the installation of a steel mesh/chainwire as specified by the site arborist. This fencing shall be installed prior to the commencement of construction works, and shall remain in place until all works are completed, with signage containing the following words: 'tree protection zone, do not enter, clearly displayed and permanently attached. Within this zone there is to be no storage of materials or machinery or site offices/sheds, nor is cement to be mixed or chemicals split/dispensed of and no stockpiling of soil or rubble. Any works required within this zone (only as approved on the construction certificate) shall be under the direction of, and to the satisfaction of, the site arborist.

All site services shall be located as far as practically possible from the trunks of all these trees, with any excavations within 5 metres of either trunk for footings, structures, services, pipes, stormwater infiltration systems etc. to be performed by hand, with any roots less than 50mm diameter encountered to be cut cleanly by hand and the affected area backfilled as soon as practically possible. Composted organic material (vitalog landcare or similar equivalent) shall be provided to a depth of 100mm within the fenced off protection area, and shall be maintained for the duration of the works.

NOTE

Arboricultural Assessment - Refer report by WOODVALE

04	18/8/21	SSDA	GF
03	14/4/21	SSDA	AJ
02	26/3/21	SSDA	KT
01	23/2/21	Draft SSDA 02	KT
rev	date	name	by chk

020510

0

2

5

10m

GENERAL NOTES

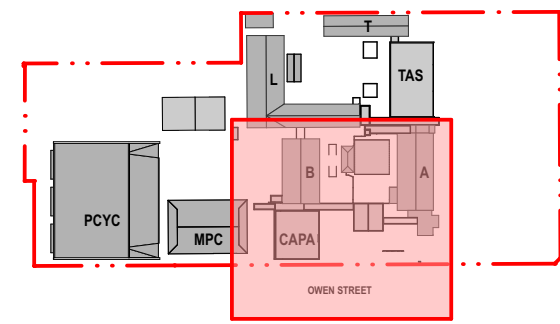
ALL DIMENSIONS AND EXISTING CONDITIONS SHALL BE CHECKED AND VERIFIED BY THE CONTRACTOR BEFORE PROCEEDING WITH THE WORK.

ALL LEVELS RELATIVE TO AUSTRALIAN HEIGHT DATUM.

DO NOT SCALE DRAWINGS.

USE FIGURED DIMENSIONS ONLY.

legend



--- BOUNDARY LINE



EXISTING TREES



PROPOSED TREES

CODE	ITEM
ASP1	Asphalt pavement
BAL1	Balustrade
BNCH1	Bench Type 1
CON1	Concrete Pavement Type 1
STAIR1	Concrete Stairs

EDG1 Edge type 1

EDG2 Edge type 2

EXGPD External GPD

FN2 Vertical Blade Slat fence

FP1 Flag Pole

GA1

GA2

GA3

GRD1 Grated Drain

GRV1 Grave

HRX1 External Single Handrail

HRX2 External Double Handrail

L1 Handrail lighting

MPB1 Mass planting 1

MPB2 Mass planting 2

MPB3 Mass planting 3

MPB4 Mass planting 4

MUL1 Mulch

EXPV Existing Paving to be retained

PAV1 Precast bands

RW1 Wall Type 1

RW2 Wall Type 2

TRF Turf

TAP Hose tap

IRRIGATION Drip Irrigation

TD1 Timber Decking

TB1 Platform benches

TRF Turf

TGS1 Tackle Indicators

W1 Wall lighting

04	23/9/21	SSDA	GF
02	14/4/21	SSDA	WJ
01	26/3/21	SSDA	KT
rev	date	name	by chk

first studio architecture interiors landscape urban community
sydney melbourne uk
Level 5, 70 King Street t +61 2 9251 7077 w firststudio.com



project
Hastings Schools Port Macquarie
Hastings Secondary College
Port Macquarie NSW 2444

title
Landscape General Arrangement Plans
Landscape Plan - Zone 1 School Entry & CAPA

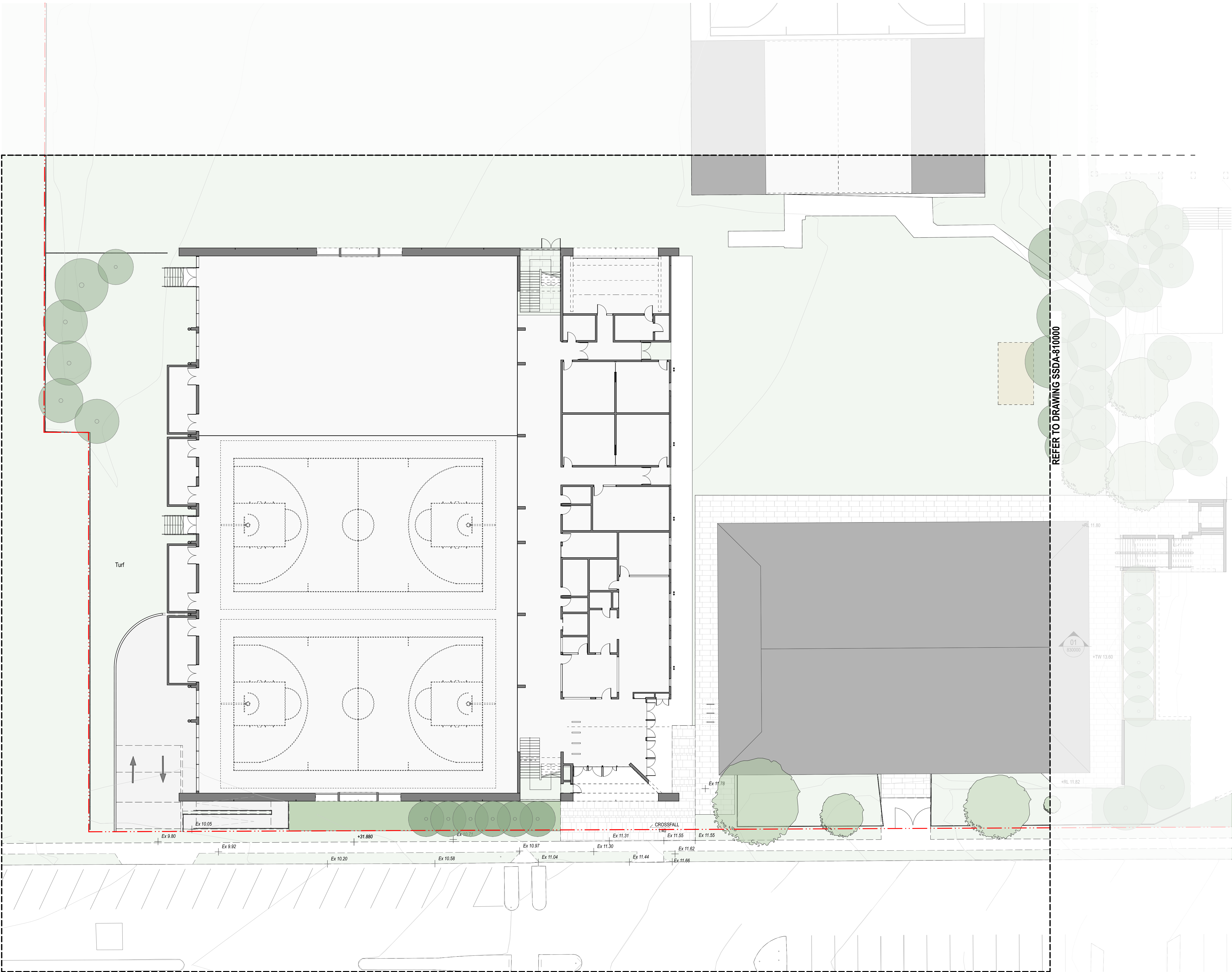
scale 1:200 @ A1 first issued 26/3/21

project code sheet no. revision

HSPM SSDA-810000 04

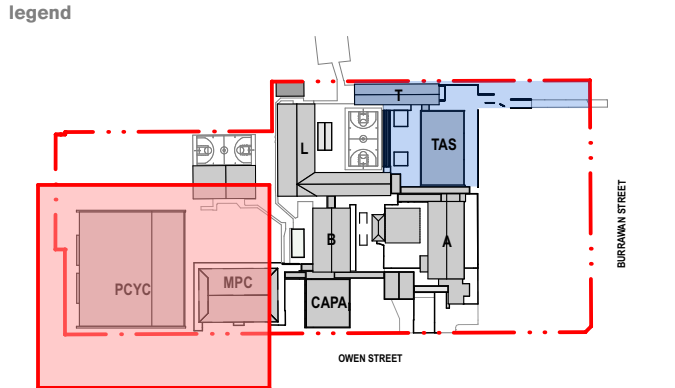


REFER TO DRAWING SSDA-810001



GENERAL NOTES

- ALL DIMENSIONS AND EXISTING CONDITIONS SHALL BE CHECKED AND VERIFIED BY THE CONTRACTOR BEFORE PROCEEDING WITH THE WORK.
- ALL LEVELS RELATIVE TO 'AUSTRALIAN HEIGHT DATUM'.
- DO NOT SCALE DRAWINGS.
- USE FIGURED DIMENSIONS ONLY.



CODE	ITEM
ASP01	Asphalt pavement
BAL1	Balustrade
BOL1	Bollard
BNCH	Bench Type
BNCH1	Bench Type 1
PAV01	Concrete Pavement Type 1
PAV02	Brick bands
STAIR1	Concrete Stairs
STAIR2	
STAIR3	
EDG1	Edge type 1
EDG2	Edge type 2
EXGPO	External GPO
FN2	Vertical Blade Slat fence
FP1	Flagpole
GA1	Gates
GA2	Gates
GA3	Gates
GRD1	Grated Drain
GRD2	Grated Drain (square)
HRX1	External Single Handrail
HRX2	External Double Handrail
L1	Handrail lighting
MPB1	Mass planting 1
MPB2	Mass planting 2
MPB3	Mass planting 3
MPB4	Mass planting 4
MUL1	Mulch Type 1
EXPAV	Existing Paving to be retained
RW1	Wall Type 1
RW2	Wall Type 2
SNK1	Stair nosing
TAP	Hose tap
TRF	Turf
TGSI	Tactile Indicators
W1	Wall lighting

05	23/8/21	SSDA	GF
04	14/4/21	SSDA	MJ
03	26/3/21	SSDA	KT
02	23/2/21	Draft SSDA 02	KT
01	12/2/21	Draft SSDA	MJ
rev	date	name	by
			chk

fjm studio architecture interiors landscape urban community
 sydney melbourne uk
 Level 5, 70 King Street t +61 2 9251 7077 w fjmstudio.com

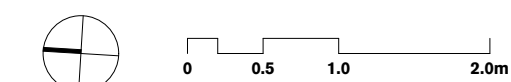
fjm studio

project
 Hastings Schools Port Macquarie
 Hastings Secondary College
 Port Macquarie NSW 2444

title
 Landscape General Arrangement Plans
 Landscape Plan - Zone 2 PCYC

scale 1:200 @ A1 first issued 12/2/21

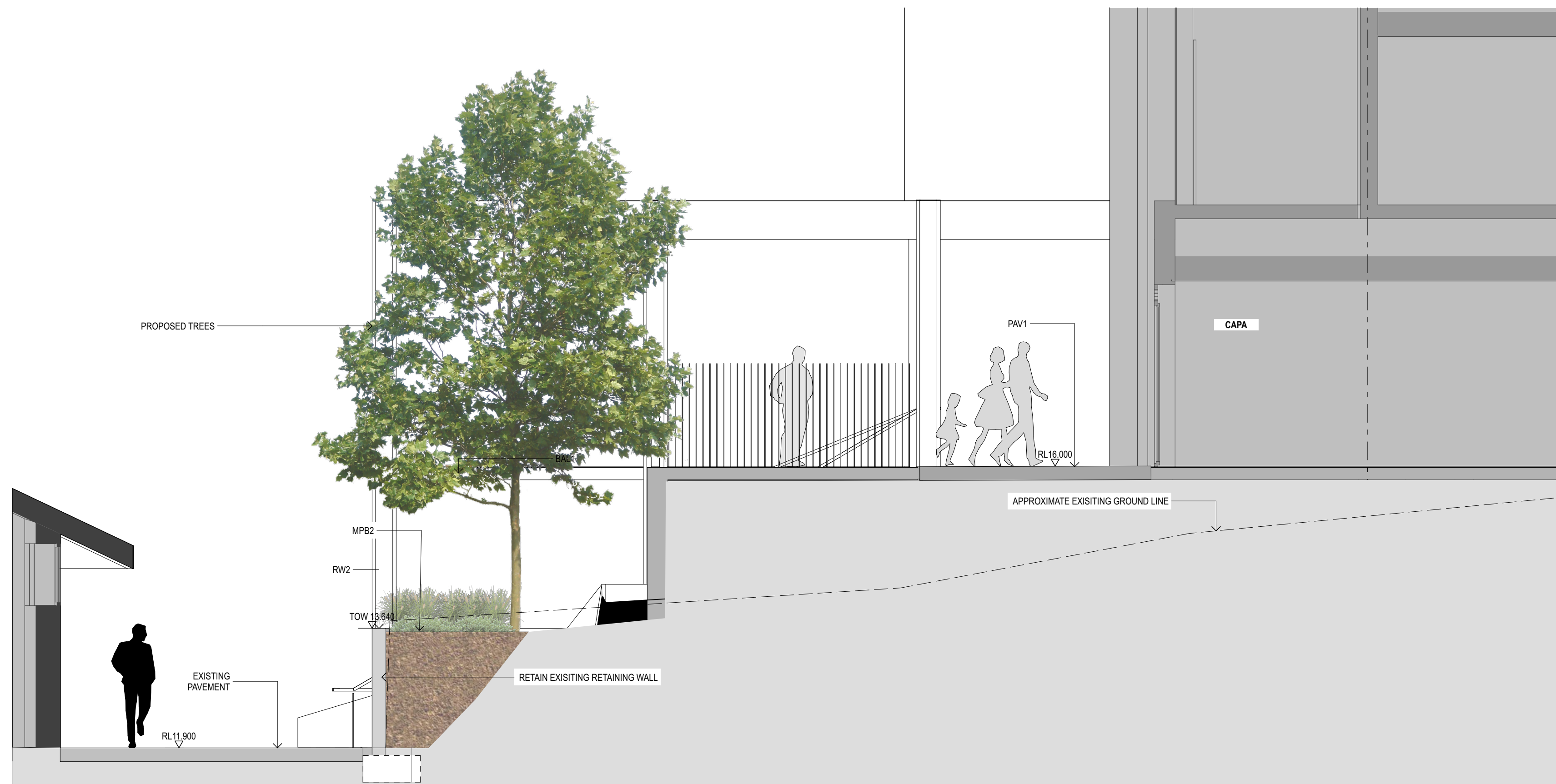
project code sheet no. revision
 HSPM SSDA-810001 05



GENERAL NOTES

- ALL DIMENSIONS AND EXISTING CONDITIONS SHALL BE CHECKED AND VERIFIED BY THE CONTRACTOR BEFORE PROCEEDING WITH THE WORK.
- ALL LEVELS RELATIVE TO 'AUSTRALIAN HEIGHT DATUM'.
- DO NOT SCALE DRAWINGS.
- USE FIGURED DIMENSIONS ONLY.

legend



1 SECTION Building L Planter
1:50

CODE	ITEM
ASPO1	Asphalt pavement
BAL 1	Balustrade
BOL 1	Bollard
BNCH	Bench Type
BNCH1	Bench Type 1
PAV01	Concrete Pavement Type 1
PAV02	Brick bands
STAIR1	Concrete Stairs
STAIR2	
STAIR3	
EDG1	Edge type 1
EDG2	Edge type 2
EXGPO	External GPO
FN2	Vertical Blade Slat fence
FP1	Flagpole
GA1	Gates
GA2	Gates
GA3	Gates
GRD1	Grated Drain
GRD2	Grated Drain (square)
HRX1	External Single Handrail
HRX2	External Double Handrail
L1	Handrail lighting
MPB1	Mass planting 1
MPB2	Mass planting 2
MPB3	Mass planting 3
MPB4	Mass planting 4
MUL1	Mulch Type 1
EXPAV	Existing Paving to be retained
RW1	Wall Type 1
RW2	Wall Type 2
SNX1	Stair nosing
TAP	Hose tap
TRF	Turf
TGSI	Tactile Indicators
W1	Wall lighting

04	23/8/21	SSDA	GF	
03	14/4/21	SSDA	MJ	
02	26/3/21	SSDA	KT	
01	12/2/21	Draft SSDA	MJ	
rev	date	name	by	chk

fjmt studio architecture interiors landscape urban community
sydney melbourne uk
Level 5, 70 King Street t +61 2 9251 7077 w fjmtstudio.com

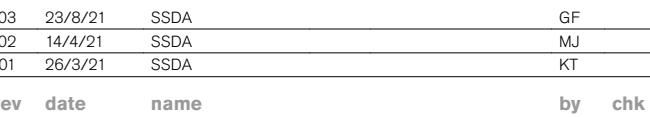
fjmt

project
Hastings Schools Port Macquarie
Hastings Secondary College
Port Macquarie NSW 2444

title
Landscape Sections
Landscape Sections - 1: 50 @ A1

scale	1:50 @ A1	first issued	12/2/21
project code	sheet no.	revision	
HSPM	SSDA-830000	04	

ALL DIMENSIONS AND EXISTING CONDITIONS
SHALL BE CHECKED AND VERIFIED BY THE
CONTRACTOR BEFORE PROCEEDING WITH THE WORK.
ALL LEVELS RELATIVE TO 'AUSTRALIAN HEIGHT DATUM'.
DO NOT SCALE DRAWINGS.
USE FIGURED DIMENSIONS ONLY.



jmt

scale	1:200 @ A1	first issued	26/3/21
project code		sheet no.	revision
HSPM		SSDA-880001	03

020304050607080910

020304050607080910

GENERAL NOTES

ALL DIMENSIONS AND EXISTING CONDITIONS SHALL BE CHECKED AND VERIFIED BY THE CONTRACTOR BEFORE PROCEEDING WITH THE WORK.

ALL LEVELS RELATIVE TO 'AUSTRALIAN HEIGHT DATUM'.

DO NOT SCALE DRAWINGS.

USE FIGURED DIMENSIONS ONLY.

legend

PCYC

MPC

CAPA

TAS

A

B

C

D

E

F

G

H

I

J

K

L

M

N

O

P

Q

R

S

T

U

V

W

X

Y

Z

OVER STREET

REFER TO DRAWING SSDA-880001



03	23/9/21	SSDA	GF
02	14/4/21	SSDA	WJ
01	26/3/21	SSDA	KT
rev	date	name	by

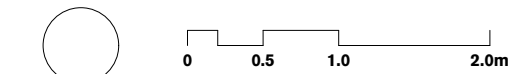
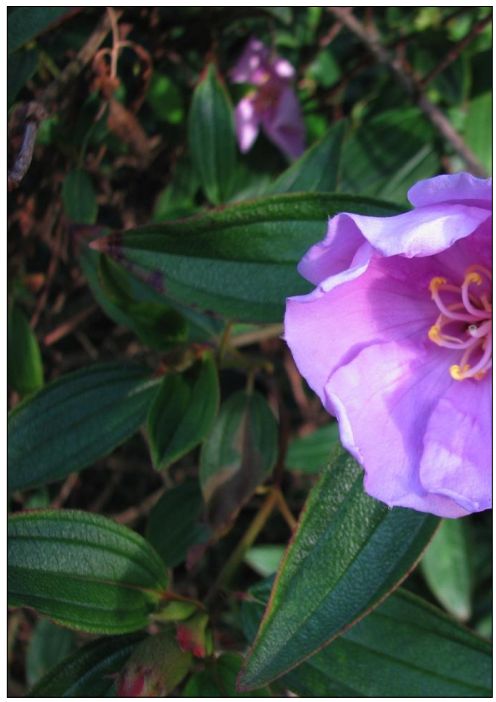
fjmt studio architecture interiors landscape urban community
sydney melbourne uk
Level 5, 70 King Street t +61 2 9251 7077 w fjmtstudio.com



project
Hastings Schools Port Macquarie
Hastings Secondary College
Port Macquarie NSW 2444

title
Landscape Planting Plans
Planting Plan - Zone 2 PCYC

scale	1:200 @ A1	first issued	26/3/21
project code	sheet no.	revision	
HSPM	SSDA-880002	03	



GENERAL NOTES

- ALL DIMENSIONS AND EXISTING CONDITIONS SHALL BE CHECKED AND VERIFIED BY THE CONTRACTOR BEFORE PROCEEDING WITH THE WORK.
- ALL LEVELS RELATIVE TO 'AUSTRALIAN HEIGHT DATUM'.
- DO NOT SCALE DRAWINGS.
- USE FIGURED DIMENSIONS ONLY.

legend

Proposed Planting Mix 03

- MIRBELIA RUBIFOLIA - HEATH MIRBELIA
- DIANELLA CAERULEA - FLAX LILY
- CASUARINA GLAUCA - COUSIN IT
- DOODIA MEDIA - RASP FERN
- VIOLA HEDERACEAE - NATIVE VIOLET
- DIANELLA CAERULEA - FLAX LILY

1	2
3	4
5	6

Proposed Planting Mix 04

- LINOSPADEX MONOSTAYCHA - WALKING STICK PALM
- TASMANIA INSIPIDA - BRUSH PEPPER
- TABEMAEMONTANA PANDACAQUI - BANANA BUSH
- HIBISCUS SPLNDENS - PINK HIBISCUS
- ALPINIA ARUNDUNLLIANA - NATIVE GINGER
- ADIANTUM FORMOSUM - BLACK STEMMED MAIDENHAIR
- ADIANTUM - HISPIDIUM - ROUGH MAIDENHAIR
- MELASTOMA AFINNE - NATIVE LASSIANDRA
- VIOLA HEDERACEAE - NATIVE VIOLET
- ASPLENIUM NIDUS - BIRD'S NEST FERM=N

1	2	3
4	5	6
7	8	9
10		

03	23/8/21	SSDA	GF
02	14/4/21	SSDA	WJ
01	26/3/21	SSDA	KT
rev	date	name	by

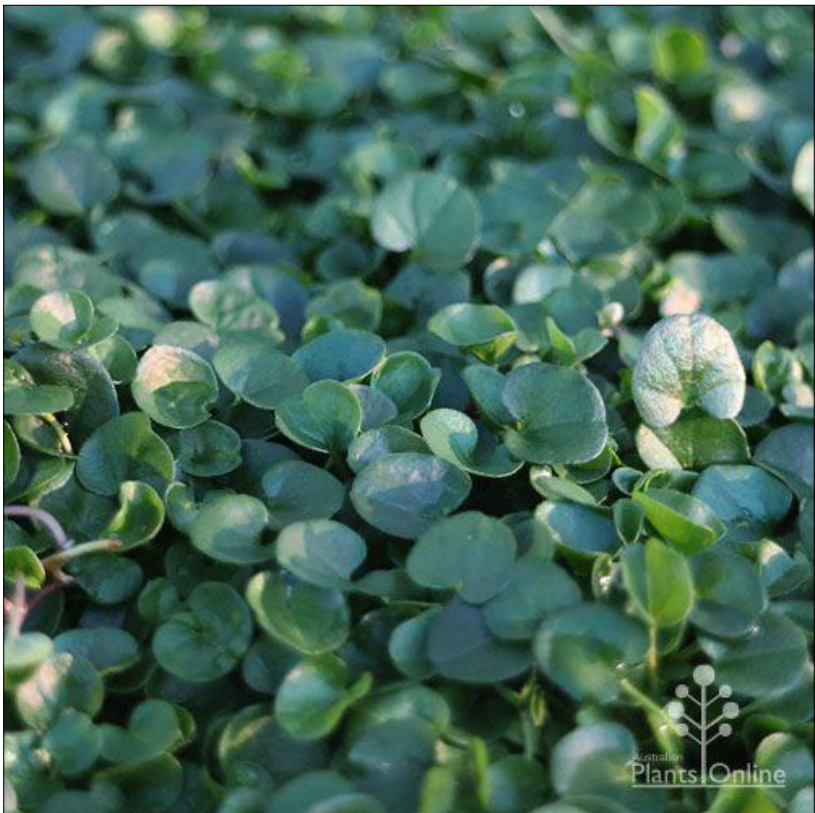
fjmt studio architecture interiors landscape urban community
sydney melbourne uk
Level 5, 70 King Street t +61 2 9251 7077 w fjmtstudio.com



project
Hastings Schools Port Macquarie
Hastings Secondary College
Port Macquarie NSW 2444

title
Landscape Planting Plans
Planting Palette and Schedule - 1 of 2

scale	1:50 @ A1	first issued	26/3/21
project code	sheet no.	revision	
HSPM	SSDA-880050	03	



Proposed Planting Mix 02

- 1 ACTINOTUS HELIANTHII - FLANNEL FLOWER
- 2 DICHONDRA REPENS - SILVER FALLS
- 3 PTERIDIUM ESCULENTUM - AUSTRAL BRACKEN
- 4 BANKSIA SPINULOSA - BIRTHDAY CANDLES

1	2
3	4



- GENERAL NOTES**
- ALL DIMENSIONS AND EXISTING CONDITIONS SHALL BE CHECKED AND VERIFIED BY THE CONTRACTOR BEFORE PROCEEDING WITH THE WORK.
 - ALL LEVELS RELATIVE TO 'AUSTRALIAN HEIGHT DATUM'.
 - DO NOT SCALE DRAWINGS.
 - USE FIGURED DIMENSIONS ONLY.

legend

02	23/8/21	SSDA	GF
01	14/4/21	SSDA	MJ
rev	date	name	by chk

fjmt studio architecture interiors landscape urban community
sydney melbourne uk
Level 5, 70 King Street t +61 2 9251 7077 w fjmtstudio.com



project
Hastings Schools Port Macquarie
Hastings Secondary College
Port Macquarie NSW 2444

title
Landscape Planting Plans
Planting Palette and Schedule - 2 of 2

scale	1:50 @ A1	first issued	14/4/21
project code	sheet no.	revision	
HSPM	SSDA-880051	02	