

HASTINGS SECONDARY COLLEGE

PORT MACQUARIE

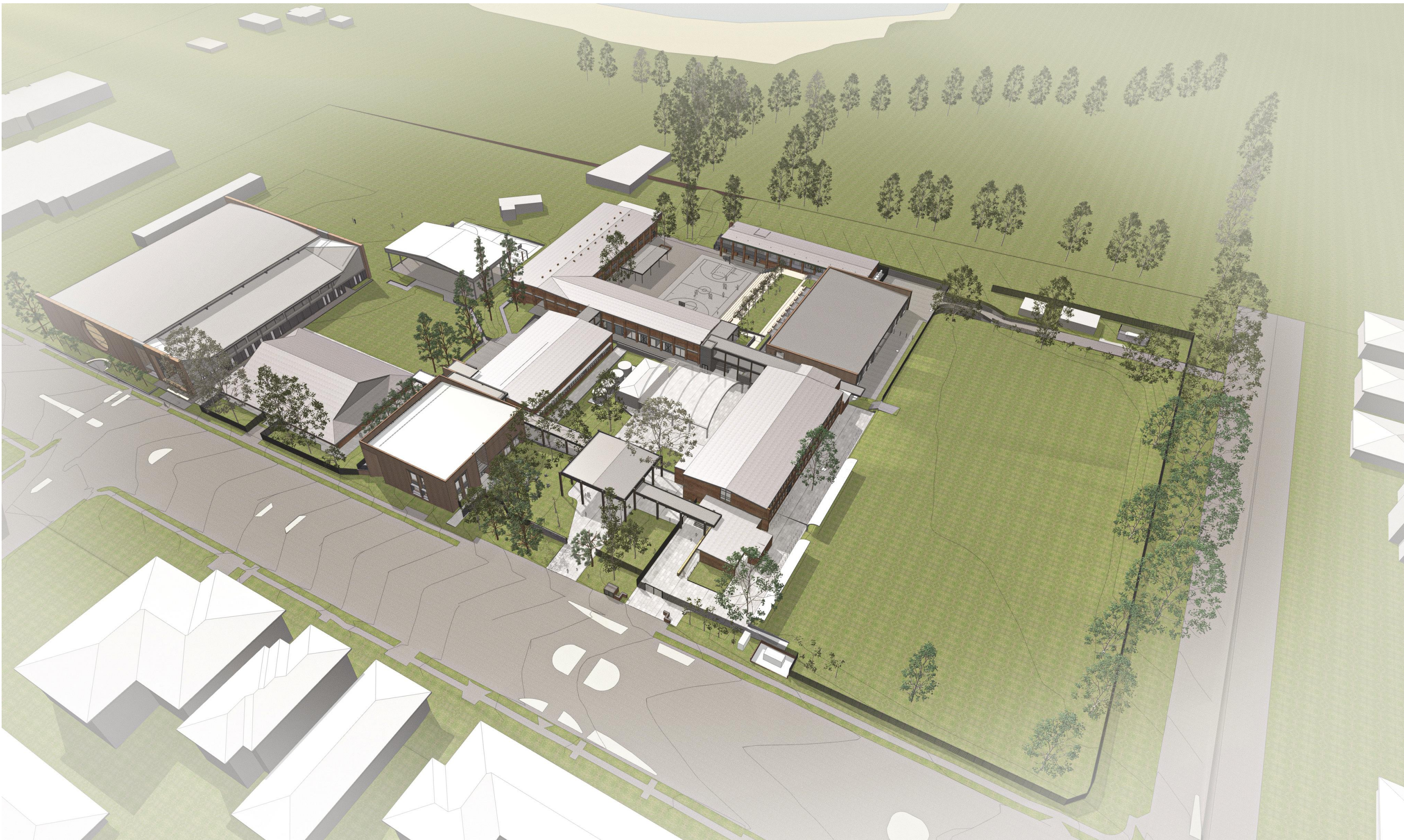
SSDA LANDSCAPE DOCUMENTATION SET

DRAWING LIST

fjmt Landscape SSDA Set			
800000 Landscape			
	SSDA-800000	Cover Sheet	03
	SSDA-800001	Site Plan	03
	SSDA-800002	Tree Management Plan - Tree Removal	02
	SSDA-800003	Tree Management Plan - Proposed	03
810000 Landscape General Arrangement Plans			
	SSDA-810000	Landscape Plan - Zone 1 School Entry & CAPA	02
	SSDA-810001	Landscape Plan - Zone 2 PCYC	04
830000 Landscape Sections			
	SSDA-830000	Landscape Sections - 1: 50 @ A1	03
850000 SSDA Landscape 3D Perspective Views			
	SSDA-850000	Entry Perspective Views	
	SSDA-850501	OPT 1 - Landscape Plan - Zone 1 School Entry & CAPA	02
880000 Landscape Planting Plans			
	SSDA-880001	Planting Plan - Zone 1 School Entry & CAPA	02
	SSDA-880002	Planting Plan - Zone 2 PCYC	02
	SSDA-880050	Planting Palette and Schedule - 1 of 2	02
	SSDA-880051	Planting Palette and Schedule - 2 of 2	01

Material and Finishes Schedule

CODE	ITEM	Description
ASP1	Asphalt pavement	30mm thick AC10 wearing course to EFSG requirements laid over prime coat / compacted base course to civil engineers detail
BAL1	Balustrade	Vertical Blade Slat Fence balustrade to timber decks and ramps - 1500 high powder coated steel Powder coat finish: Dulux - Monument Satin
BNCH1	Bench Type 1	Precast Seating Straight Plinth bench, reinforced concrete class 2C colour to match PAV1
CON1	Concrete Pavement Type 1	Exposed Aggregate Concrete with CCS Full depth colour tint (banding as shown PAV1) - Finish: Barossa Moonstone or similar subject to approval
STAIR1	Concrete Stairs	Concrete to match CON1 mix. Finish: Sandblast to match paver Stair detail with shadow gap (rebat) between tread and riser refer detail. Subject to sample panel review and approval. Allow for setdown/cast-in of precast treads and nosing Granite tile stair nosing insert Colour: Gunmetal Shot blast To provide compliant contrast.
EDG1	Edge type 1	Weathered steel edge 2.5mm thickness, 75mm height, maximum 30mm above soil. Installation: Flush to adjacent surfaces and refer to manufacturer specifications.
EDG2	Edge type 2	Weathered steel edge 2mm thickness, 50mm height, maximum 30mm above soil. Installation: Flush to adjacent surfaces and refer to manufacturer specifications.
EXGPO	External GPO	General Power Outlet double external lockable waterproof
FN2	Vertical Blade Slat fence	Vertical Blade Slat Fence - 2150 high powder coated steel Powder coat finish: Dulux - Monument Satin
FP1	Flag Pole	Flagpole - With Anti Vandal Internal Halyard system 7.5M tall powder coated aluminium 1000IA tapering to 60mm top installed t manufacturers detail (White)
GA1		Single swing external Egress gates - - to match in to Vertical Blade Fence (subject to approval by Landscape Architect). Powder coat finish: Dulux - Monument Satin
GA2		Double swing external Egress gates - - to match in to Vertical Blade Fence (subject to approval by Landscape Architect). Powder coat finish: Dulux - Monument Satin
GA3		Double slider external Egress gates - - to match in to Vertical Blade Fence (subject to approval by Landscape Architect). Powder coat finish: Dulux - Monument Satin
GRD1	Grated Drain	Supply and install 150 wide trench grate- with Cast Iron heelsafe anti-slip grate. Connect to stormwater system.
GRV1	Gravel	Gravel edge of 20mm Scoria at minimum 50mm
HRX1	External Single Handrail	42mm Diameter Stainless Steel handrail and stanchions
HRX2	External Double Handrail	Central 42mm Diameter SS handrail and stanchions
L1	Handrail lighting	LED light to illuminate stairs integrated into underside of tube rail
MPB1	Mass planting 1	Garden profile on grade 300mm deep imported top soil approved validated material over cultivated existing sub grade and marker layer. Mulch topping Eucchi mulch or similar. Irrigated.
MPB2	Mass planting 2	Tree pits 850mm deep garden profile imported top soil approved validated material over cultivated sub grade and marker layer. Mulch topping Eucchi mulch or similar. Irrigated.
MPB3	Mass planting 3	Over existing soil 200mm deep imported soil approved validated (fine aggregate based) material over marker layer to be approved by arborist. Mulch topping Eucchi mulch or similar. Irrigated.
MPB4	Mass planting 4	Tree pits 600mm deep garden profile
MUL1	Mulch	Supply and install organic mulch 75mm thick to all garden areas. Eucchi mulch or similar approved.
EXPAV	Existing Paving to be retained	Existing Paving to be retained
PAV1	Precast bands	Precast concrete paving on concrete sub base. Finish: Fleece. Shotblast
RW1	Wall Type 1	Sealing steps Sandstone block Grade 1 rough sawn (nom 1000 x 500 x 500, 2000x500x500) Cut smooth top face for seating height mortar joints colour match
RW2	Wall Type 2	Reinforced Insitu Concrete walling Class2c Off form with off white cement
TRF	Turf	Turf (awn)
TAP	Hose tap	Non potable water vandal proof hose tap connection for irrigation and wash down Vandal proof
IRRIGATION	Drip Irrigation	To all new planting and grass areas Equal to 15mm drip eze pressure compensating in line drip tube 2 L/h. Stout at 350mm eater connection, solenoids, soil sensor, back flow device. Hardwired controller.
TD1	Timber Decking	140 x 32 Accoya Timber Finish: Dulux Intergrain Ultraclear Exterior in Mushroom or similar approved.
TB1	Platform benches	Avalon Platform Bench 1200 mm long x 1200 wide Spotted Gum Timber Battens. Powdercoated Frame: Woodland Grey Couch (100mm) Turf (or similar approved) 50mm min. cultivated and organic compost underlay on sub grade. Refer school supplier Turf blend.
TRF	Turf	
TGSI	Tactile Indicators	Stainless steel tactile indicators. To provide compliant contrast
W1	Wall lighting	Round recessed wall light to illuminate stairs either side of each stair to meet compliant safety lighting



BOTANICAL NAME	COMMON NAME	INDICATIVE CONTAINER SIZE	Plant Size	SPACING (per sq.m)	QUANTITY
TREES					
Toona ciliata	Native Red Cedar	500L		AS SHOWN	1
Banksia integrifolia	Coast Banksia	75L		AS SHOWN	12
Brachychiton acerifolius	Illawarra Flame Trees	75L		AS SHOWN	1
Eucalyptus grandis	Rose Gum	75L		AS SHOWN	1
Eucalyptus obvata	Swamp Gum	75L		AS SHOWN	1
Eucalyptus propinqua	Grey Gum	75L		AS SHOWN	1
Eucarpus reticulatus	Blueberry Ash	75L		AS SHOWN	1
PM03 - Planting Mix 03					
Native Entry Planting	Total Area (sq.m)				
	885				
Coastal Headland					
Casuarina glauca Cousin It (Native)	Dwarf Sheoak	150mm	0.4 (w) x 0.1m H	2	295
Dianella caerulea (Indigenous)	Blue Flax Lily	150mm	0.3 (w) x 0.4m H	2	295
Lambertia formosa (Indigenous)	Mountain Devil	300mm	1.5 (w) x 1.5m H	0.2	30
Mitrasia rubrifolia (Indigenous)	Heath Mitrasia	300mm	0.4 (w) x 0.5m H	4	590
Pultanea maritima (Indigenous)	Coastal Headland Pea	150mm	0.4 (w) x 0.4m H	4	590
Viola hederacea (Native)	Native Violet	150mm	0.4 (w) x 0.5m H	4	590
PM04 - Planting Mix 04					
Littoral Rainforest	Total Area (sq.m)				
Native Entry Planting	646.5				
Trees					
Linospadix monostachya	Walking Stick Palm	300mm	1.3 (w) x 3m H	AS SHOWN	14
Large Shrubs					
Hibiscus splendens	Pink Hibiscus	300mm	3 (w) x 4m H	AS SHOWN	2
Maleoloma affine	Native Lassandra	300mm	1.5 (w) x 3m H	AS SHOWN	1
Tabernaemontana Pandacacqui	Banana Bush	300mm	2 (w) x 2m H	AS SHOWN	10
Tasmania insipida	Brush Pepperbush	300mm	2.5 (w) x 2.4m H	AS SHOWN	4
Small - Medium Shrubs					
Alpinia acuminelliana	Native Ginger	300mm	1.5 (w) x 2m H	0.25	32
Adiantum formosum	Blackstem	300mm	0.4 (w) x 0.3m H	2	259
Adiantum hespidum	Rough Madderhair	300mm	0.4 (w) x 0.3m H	2	259
Asplenium nidus	Bird's Nest Fern	300mm	0.4 (w) x 0.3m H	2	259
Groundcover					
Viola hederacea (Native)	Native Violet	150mm	0.4 (w) x 0.5m H	3	388
Planting to Fences (FN) and Balustrades (BAL1) CAPA					
	Total Linear Meter: 54 lin. M				
Callerya australis	Blunt Wisteria	200mm	2 (w) x 10m H	1 per linear m	54
Pandora pandorana	Wonga Wonga Vine	200mm	2 (w) x 10m H	1 per linear m	54



- GENERAL NOTES**
- ALL DIMENSIONS AND EXISTING CONDITIONS SHALL BE CHECKED AND VERIFIED BY THE CONTRACTOR BEFORE PROCEEDING WITH THE WORK.
 - ALL LEVELS RELATIVE TO 'AUSTRALIAN HEIGHT DATUM'.
 - DO NOT SCALE DRAWINGS
 - USE FIGURED DIMENSIONS ONLY.

legend

03	14/4/21	SSDA	MJ
02	23/2/21	Draft SSDA 02	KT
01	12/2/21	Draft SSDA	MJ
rev	date	name	by chk

fjmt studio architecture interiors landscape urban community
sydney melbourne uk
Level 5, 70 King Street t +61 2 9251 7077 w fjmtstudio.com



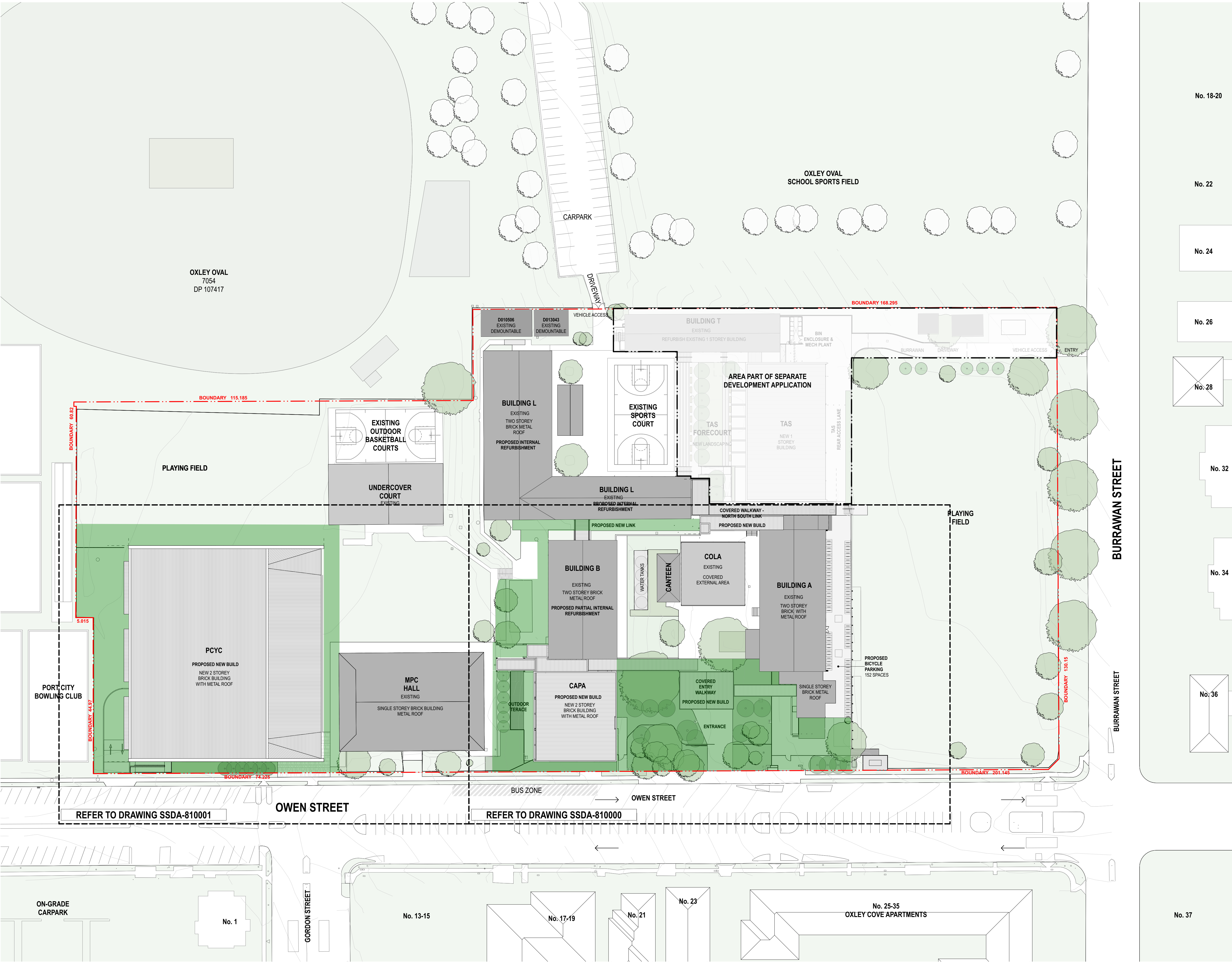
project
Hastings Schools Port Macquarie
Hastings Secondary College
Port Macquarie NSW 2444

title
**Landscape
Cover Sheet**

scale Not to Scale first issued 12/2/21

project code sheet no. revision

HSPM SSDA-800000 03



0 5 10 20m

GENERAL NOTES

- ALL DIMENSIONS AND EXISTING CONDITIONS SHALL BE CHECKED AND VERIFIED BY THE CONTRACTOR BEFORE PROCEEDING WITH THE WORK.
- ALL LEVELS RELATIVE TO AUSTRALIAN HEIGHT DATUM.
- DO NOT SCALE DRAWINGS.
- USE FIGURED DIMENSIONS ONLY.

legend

SSDA SCOPE OF LANDSCAPING WORKS

No. 18-20

No. 22

No. 24

No. 26

No. 28

No. 32

No. 34

No. 36

No. 37

03 14/4/21 SSDA MJ

02 23/2/21 Draft SSDA 02 KT

01 12/2/21 Draft SSDA MJ

rev date name by chk

fjmt studio architecture interiors landscape urban community

sydney melbourne uk
Level 5, 70 King Street t +61 2 9251 7077 w fjmtstudio.com

project

Hastings Schools Port Macquarie
Hastings Secondary College
Port Macquarie NSW 2444

title

Landscape
Site Plan

scale 1:500 @ A1

first issued 12/2/21

project code

sheet no.

revision

HSPM

SSDA-800001

03



051020m

GENERAL NOTES

ALL DIMENSIONS AND EXISTING CONDITIONS SHALL BE CHECKED AND VERIFIED BY THE CONTRACTOR BEFORE PROCEEDING WITH THE WORK.

ALL LEVELS RELATIVE TO AUSTRALIAN HEIGHT DATUM.

DO NOT SCALE DRAWINGS.

USE FIGURED DIMENSIONS ONLY.

Legend

No. 18-20

+27.190ex

+30.600

Tree ID#

Tree ID#

No. 22

Tree ID#

Tree ID#

No. 24

No. 26

No. 28

No. 32

No. 34

No. 36

No. 37

No. 42

SITE BOUNDARY

EXISTING SPOT LEVEL

PROPOSED SPOT LEVEL

EXISTING TREE TO BE RETAINED IN ACCORDANCE WITH ARBORCULTURAL ASSESSMENT

EXISTING TREE TO BE REMOVED

02	14/4/21	SSDA	MJ
01	26/3/21	SSDA	KT
rev	date	name	by

fjmt studio architecture interiors landscape urban community
sydney melbourne uk
Level 5, 70 King Street t +61 2 9251 7077 w fjmtstudio.com

project
Hastings Schools Port Macquarie
Hastings Secondary College
Port Macquarie NSW 2444

title
Landscape
Tree Management Plan - Tree Removal

scale	1:500 @ A1	first issued	26/3/21
project code	sheet no.	revision	
HSPM	SSDA-800002	02	



GENERAL NOTES

- ALL DIMENSIONS AND EXISTING CONDITIONS SHALL BE CHECKED AND VERIFIED BY THE CONTRACTOR BEFORE PROCEEDING WITH THE WORK.
- ALL LEVELS RELATIVE TO 'AUSTRALIAN HEIGHT DATUM'.
- DO NOT SCALE DRAWINGS.
- USE FIGURED DIMENSIONS ONLY.

Legend

- SITE BOUNDARY
- +27.190ex EXISTING SPOT LEVEL
- +30.600 PROPOSED SPOT LEVEL
- Tree ID# EXISTING TREE TO BE RETAINED IN ACCORDANCE WITH ARBORICULTURAL ASSESSMENT
- Tree ID# EXISTING TREE TO BE REMOVED
- STRUCTURAL ROOT ZONE
- TREE PROTECTION ZONE
- NOMINAL ELEC/HYD SERVICES TRENCHING ZONE. Note: Detailed site investigation to be undertaken to determine pathway to ensure proposed tree retention.
- NOMINAL STORMWATER SERVICES TRENCHING ZONE. Note: Detailed site investigation to be undertaken to determine pathway to ensure proposed tree retention.

TREE PROTECTION

In order to ensure the retention of the trees to be retained the following measures are to be taken in accordance with the Arboricultural Assessment Report.

All detailed architectural, building, engineering (structural, stormwater and drainage, services) and landscape documentation is to be developed to show the retention of these trees.

A qualified site arborist is to be engaged for the duration of the works to administer compliance with the conditions relating to trees on the site, with all the site staff to adhere to the arborists instructions.

The trees are to be physically protected by the installation of a steel mesh/chainwire as specified by the site arborist. This fencing shall be installed prior to the commencement of construction works, and shall remain in place until all works are completed, with signage containing the following words: 'tree protection zone, do not enter, clearly displayed and permanently attached. Within this zone there is to be no storage of materials or machinery or site office/sheds, nor is cement to be mixed or chemicals spill/disposed of and no stockpiling of soil or rubble. Any works required within this zone (only as approved on the construction certificate) shall be under the direction of, and to the satisfaction of, the site arborist.

All site services shall be located as far as practically possible from the trunks of all these trees, with any excavations within 5 metres of either trunk for footings, structures, services, pipes, stormwater infiltration systems etc. to be performed by hand, with any roots less than 50mm diameter encountered to be cut cleanly by hand and the affected area backfilled as soon as practically possible. Composted organic material (vilgrow landscape or similar equivalent) shall be provided to a depth of 100mm within the fenced off protection area, and shall be maintained for the duration of the works.

NOTE

Arboricultural Assessment - Refer report by WOODVALE

03	14/4/21	SSDA	MJ
02	26/3/21	SSDA	KT
01	23/2/21	Draft SSDA 02	KT
rev	date	name	by
			chk

fjmt studio architecture interiors landscape urban community
sydney melbourne uk
Level 5, 70 King Street t +61 2 9251 7077 w fjmtstudio.com

project
Hastings Schools Port Macquarie
Hastings Secondary College
Port Macquarie NSW 2444

title
Landscape
Tree Management Plan - Proposed

scale 1:500 @ A1 **first issued** 23/2/21

project code **sheet no.** **revision**
HSPM SSDA-800003 03

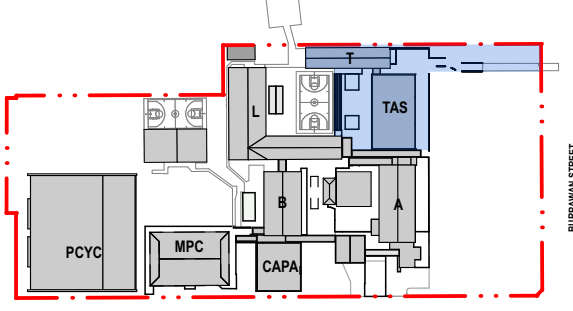




GENERAL NOTES

- ALL DIMENSIONS AND EXISTING CONDITIONS SHALL BE CHECKED AND VERIFIED BY THE CONTRACTOR BEFORE PROCEEDING WITH THE WORK.
- ALL LEVELS RELATIVE TO AUSTRALIAN HEIGHT DATUM.
- DO NOT SCALE DRAWINGS.
- USE FIGURED DIMENSIONS ONLY.

legend



--- SITE BOUNDARY

CODE	ITEM
ASP1	Asphalt pavement
BAL1	Balustrade
BOL1.00	Bollard
BNCH1	Bench Type 1
BNCH11	Bench Type 1
CON1	Concrete Pavement Type 1
STAR1	Concrete Stairs

EDG1	Edge type 1
EDG2	Edge type 2
EXGPO	External GPO
FN2	Vertical Blade Slat fence
FP1	Flag Pole
GA1	
GA2	
GA3	
GRD1	Grated Drain
GRD2	Grated Drain (Square)
GRV1	Gravel
HRX1	External Single Handrail
HRX2	External Double Handrail
L1	Handrail lighting
MPB1	Mass planting 1
MPB2	Mass planting 2
MPB3	Mass planting 3
MPB4	Mass planting 4

MUL1	Mulch
EXPAV	Existing Paving to be retained
TRW1	Precast bands
TRW1	Wall Type 1
TRW2	Wall Type 2
TRF	Turf
TAP	Hose tap
IRRIGATION	Drip Irrigation
TB1	Platform benches
TRF	Turf
TGSI	Tactile Indicators
WL1	Wall lighting

02	14/4/21	SSDA	MJ
01	26/3/21	SSDA	KT
rev	date	name	by
			chk

first studio architecture interiors landscape urban community
sydney melbourne uk
Level 5, 70 King Street t +61 2 9251 7077 w firststudio.com



project
Hastings Schools Port Macquarie
Hastings Secondary College
Port Macquarie NSW 2444

title
Landscape General Arrangement Plans
Landscape Plan - Zone 1 School Entry & CABA

scale 1:200 @ A1 first issued 26/3/21

project code sheet no. revision

HSPM SSDA-810000 02



020251

7077

0

2

5

10m

GENERAL NOTES

ALL DIMENSIONS AND EXISTING CONDITIONS SHALL BE CHECKED AND VERIFIED BY THE CONTRACTOR BEFORE PROCEEDING WITH THE WORK.

ALL LEVELS RELATIVE TO AUSTRALIAN HEIGHT DATUM.

DO NOT SCALE DRAWINGS.

USE FIGURED DIMENSIONS ONLY.

legend

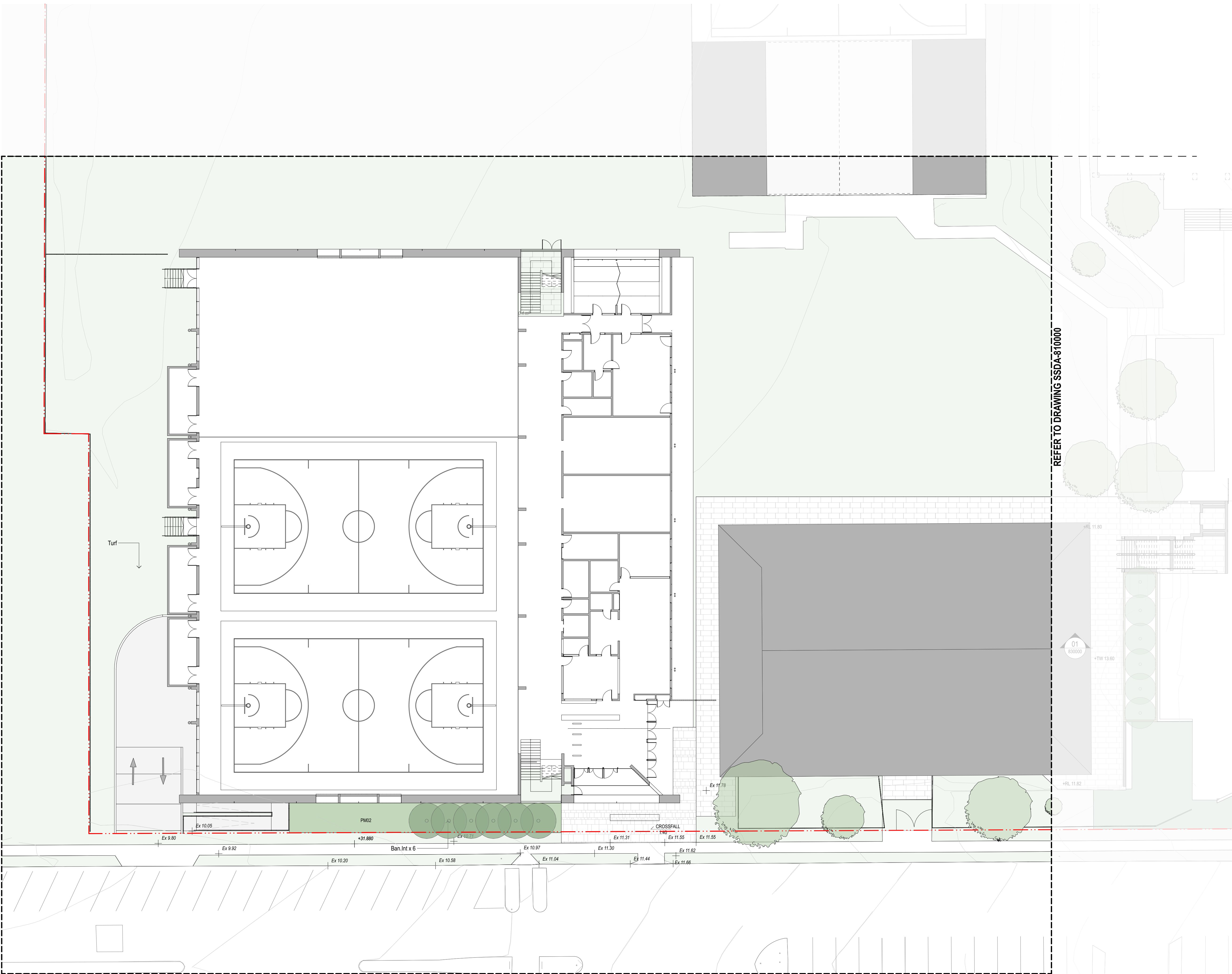
PCYC

MPC

CABA

TAS

OVERSEA STREET



REFER TO DRAWING SSDA-810000

SITE BOUNDARY	
CODE	ITEM
ASP1	Asphalt pavement
BAL1	Balustrade
BOL1.00	Bollard
BKCH1	Bench Type 1
BKCH1	Bench Type 1
CON1	Concrete Pavement Type 1
STAR1	Concrete Stairs
EDG1	Edge type 1
EDG2	Edge type 2
EXGPO	External GPO
FN2	Vertical Blade Slat fence
FP1	Flag Pole
GA1	
GA2	
GA3	
GRD1	Grated Drain
GRD2	Grated Drain (Square)
GRV1	Gravel
HRX1	External Single Handrail
HRX2	External Double Handrail
LI1	Handrail lighting
MPB1	Mass planting 1
MPB2	Mass planting 2
MPB3	Mass planting 3
MPB4	Mass planting 4
MUL1	Mulch
EXPW	Existing Paving to be retained
RAW1	Precast bands
RW1	Wall Type 1
RW2	Wall Type 2
TRF	Turf
TAP	Hose tap
IRRIGATION	Drip Irrigation
TB1	Platform benches
TRF	Turf
TGSI	Tactile Indicators
WI1	Wall lighting

rev	date	name	by	chk
04	14/4/21	SSDA		MJ
03	16/3/21	SSDA		KT
02	23/2/21	Draft SSDA 02		KT
01	12/2/21	Draft SSDA		MJ

fjmt studio architecture interiors landscape urban community

sydney melbourne uk

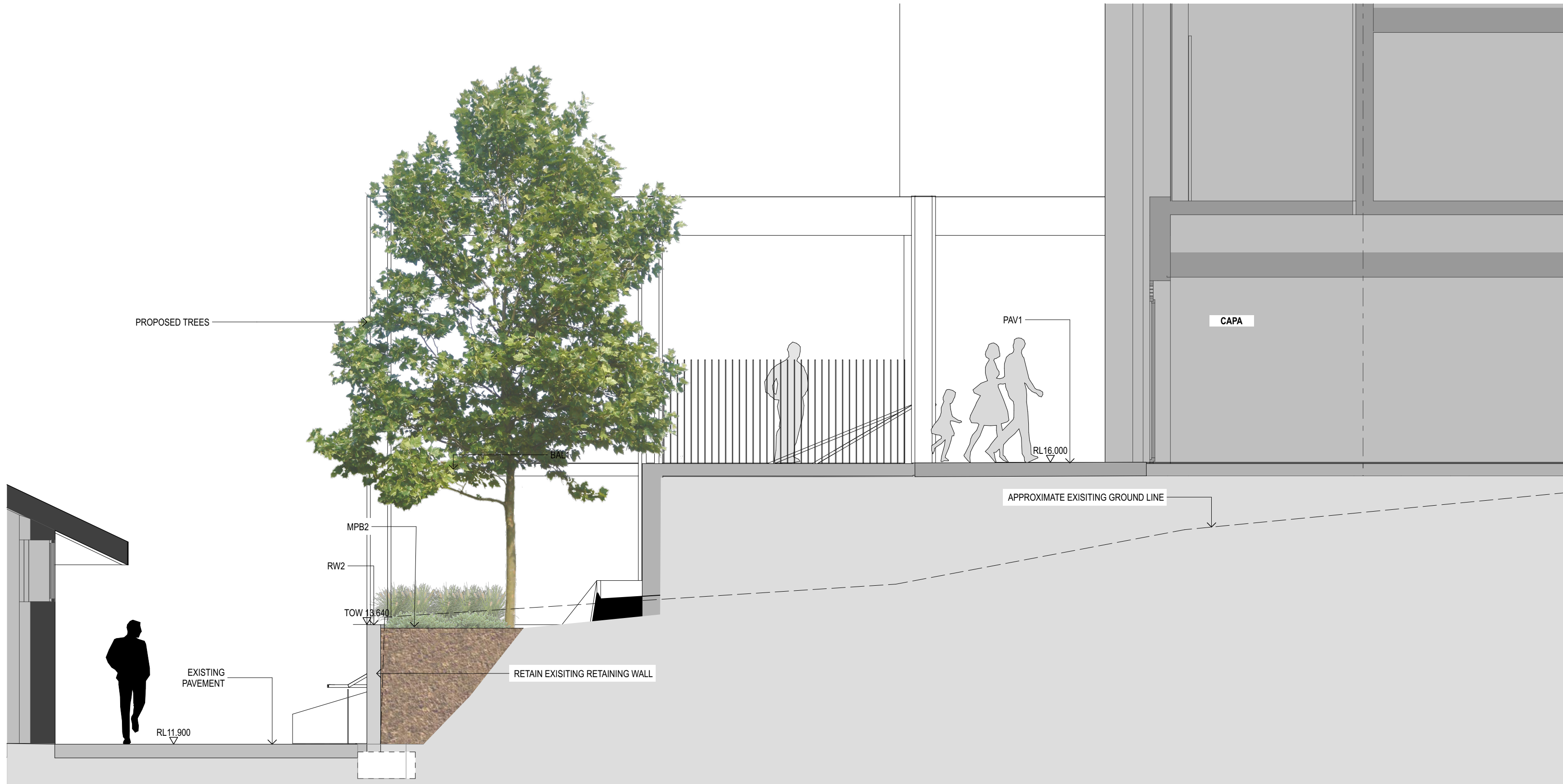
Level 5, 70 King Street t +61 2 9251 7077 w fjmtstudio.com

project

Hastings Schools Port Macquarie
Hastings Secondary College
Port Macquarie NSW 2444

title
Landscape General Arrangement Plans
Landscape Plan - Zone 2 PCYC

scale	1:200 @ A1	first issued	12/2/21
project code	sheet no.	revision	
HSPM	SSDA-810001	04	



1 SECTION Building L Planter
1:50

GENERAL NOTES

- ALL DIMENSIONS AND EXISTING CONDITIONS SHALL BE CHECKED AND VERIFIED BY THE CONTRACTOR BEFORE PROCEEDING WITH THE WORK.
- ALL LEVELS RELATIVE TO 'AUSTRALIAN HEIGHT DATUM'.
- DO NOT SCALE DRAWINGS.
- USE FIGURED DIMENSIONS ONLY.

Legend

- SITE BOUNDARY	
CODE	ITEM
ASP1	Asphalt pavement
BAL1	Balustrade
BOL1.00	Bollard
BKCH	Bench Type
BKCH1	Bench Type 1
CON1	Concrete Pavement Type 1
STAR1	Concrete Stairs
EDG1	Edge type 1
EDG2	Edge type 2
EXGPO	External GPO
FN2	Vertical Blade Slat fence
FP1	Flag Pole
GA1	
GA2	
GA3	
GRD1	Grated Drain
GRD2	Grated Drain (Square)
GRV1	Gravel
HRX1	External Single Handrail
HRX2	External Double Handrail
L1	Handrail lighting
MPB1	Mass planting 1
MPB2	Mass planting 2
MPB3	Mass planting 3
MPB4	Mass planting 4
MUL1	Mulch
EXPW	Existing Paving to be retained
RAW1	Precast bands
RW1	Wall Type 1
RW2	Wall Type 2
TRF	Turf
TAP	Hose tap
IRRIGATION	Drip Irrigation
TB1	Platform benches
TRF	Turf
TGSI	Tactile Indicators
WI	Wall lighting

03	14/4/21	SSDA	MJ
02	26/3/21	SSDA	KT
01	12/2/21	Draft SSDA	MJ
rev	date	name	by chk

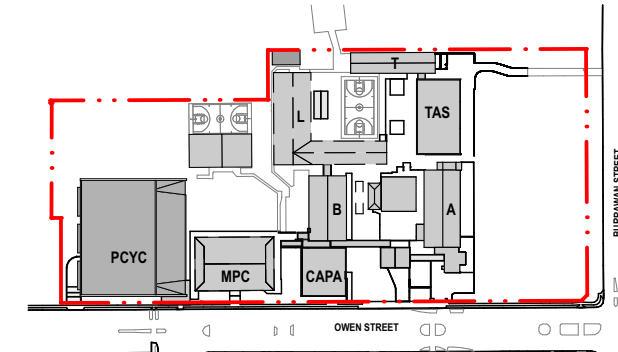
fjmt studio architecture interiors landscape urban community
sydney melbourne uk
Level 5, 70 King Street t +61 2 9251 7077 w fjmtstudio.com

fjmt

project
Hastings Schools Port Macquarie
Hastings Secondary College
Port Macquarie NSW 2444

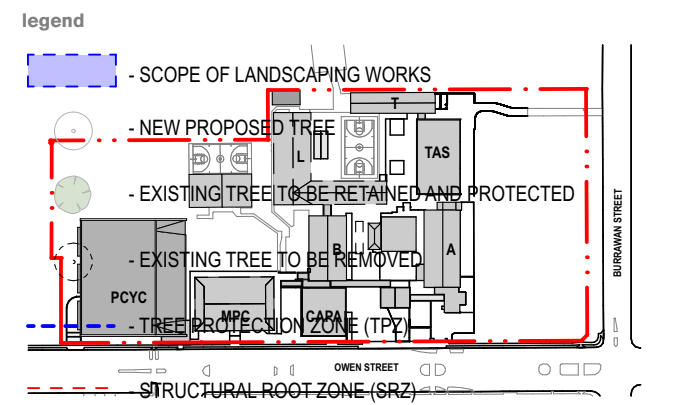
title
Landscape Sections
Landscape Sections - 1: 50 @ A1

scale	1:50 @ A1	first issued	12/2/21
project code	sheet no.	revision	
HSPM	SSDA-830000	03	



— . . — - SITE BOUNDARY

BOTANICAL NAME	COMMON NAME	INDICATIVE CONTAINER SIZE	Plant Size	SPACING (per sq.m)	QUANTITY
TREES					
<i>Tecoma ciliata</i>	Native Red Cedar	500L		AS SHOWN	1
<i>Banksia integrifolia</i>	Coast Banksia	75L		AS SHOWN	12
<i>Brachyotum acroforius</i>	Baweria Flame Trees	75L		AS SHOWN	1
<i>Eucalyptus grandis</i>	Rose Gum	75L		AS SHOWN	1
<i>Eucalyptus divaricata</i>	Swamp Gum	75L		AS SHOWN	1
<i>Eucalyptus propinqua</i>	Grey Gum	75L		AS SHOWN	1
<i>Elaeocarpus reticulatus</i>	Banyan Aah	75L		AS SHOWN	1
PM03 - Planting Mix G3 Native Entry Planting					
	Total Area (sq.m)				
	885				
Coastal Headland					
<i>Casuarina glauca</i> Cousin & (Native)	Blue Sheak	150mm	0.4 (w) x 0.1 m H	2	295
<i>Diorella cuneata</i> (Indigenous)	Dwarf Lilly	150mm	0.3 (w) x 0.4 m H	2	295
<i>Lambertia formosa</i> (Indigenous)	Lambertia Dewal	300mm	1.5 (w) x 0.5 m H	0.2	30
<i>Mitella rubrifolia</i> (Indigenous)	Heath Mitella	300mm	0.4 (w) x 0.5 m H	4	580
<i>Pultanea maritima</i> (Indigenous)	Coastal Headland Pea	150mm	0.4 (w) x 0.4 m H	4	590
<i>Victoria hecabea</i> (Native)	Native Violet	150mm	0.4 (w) x 0.4 m H	4	590
PM04 - Planting Mix G4 Littoral Rainforest Native Entry Planting					
	Total Area (sq.m)				
	546.5				
Trees					
<i>Litseaopsidea monostachya</i>	Walking Stick Palm	300mm	1.3 (w) x 3m H	AS SHOWN	14
Large Shrubs					
<i>Hibiscus splendens</i>	Pink Hibiscus	300mm	3 (w) x 4m H	AS SHOWN	2
<i>Melastoma affine</i>	Native Laseandria	300mm	1.5 (w) x 2m H	AS SHOWN	1
<i>Tabeaemona pandanacea</i>	Banana Bush	300mm	2 (w) x 2m H	AS SHOWN	10
<i>Tasmania insipida</i>	Brush Pepperbush	300mm	2.5 (w) x 2.4 m H	AS SHOWN	4
Small - Medium Shrubs					
<i>Alnus australis</i>	Native Ginger	300mm	1.5 (w) x 2m H	0.25	33
<i>Adiantum formosum</i>	Blockstem	300mm	0.4 (w) x 0.3 m H	2	259
<i>Adiantum hypodermis</i>	Rough Maidenhair	300mm	0.4 (w) x 0.3 m H	2	259
<i>Asplenium nidus</i>	Bird's Nest Fern	300mm	0.4 (w) x 0.3 m H	2	259
Groundcover					
<i>Viola hecabea</i> (Native)	Native Violet	150mm	0.4 (w) x 0.5 m H	3	358
Planting to Fences (FN) and Balustrades (BAL) CAPA Coloured aesthetically					
<i>Pandora pandora</i>	Blunt Wisteria	200mm	2 (w) x 10m H	1 per linear m	54
<i>Pandora pandora</i>	Wang Wang Vine	200mm	2 (w) x 10m H	1 per linear m	54



— . . — - SITE BOUNDARY

BOTANICAL NAME	COMMON NAME	INDICATIVE CONTAINER SIZE	Plant Size	SPACING (per sq. in)	QUANTITY
Trees					
<i>Torre Calata</i>	Coast Red Cedar	500L		AS SHOWN	1
<i>Banksia integrifolia</i>	Native Banksia	75L		AS SHOWN	12
<i>Brachyotum acrofolius</i>	Ravens Flame Trees	75L		AS SHOWN	1
<i>Eucalyptus grandis</i>	Rose Gum	75L		AS SHOWN	1
<i>Eucalyptus albens</i>	Creeping Gum	75L		AS SHOWN	1
<i>Eucalyptus propinqua</i>	Grey Gum	75L		AS SHOWN	1
<i>Elaeocarpus reticulatus</i>	Baoberry Ash	75L		AS SHOWN	1
PM03 - Planting Mix 03 Native Entry Planting					
	Total Area (sq. m)				
	885				
Coastal Headland					
<i>Caustaria gaudex Cousin 4 (Native)</i>	Dwarf Sheak	150mm	0.4 (w) x 0.5 m H	2	295
<i>Convolvulus (indigenous)</i>	Blue Flax Lilly	150mm	0.3 (w) x 0.4 m H	2	285
<i>Lambertia formosa (indigenous)</i>	Mountain Devil	300mm	1.5 (w) x 1.5 m H	0.2	30
<i>Mitelia rubrifolia (indigenous)</i>	Heath Mitelia	300mm	0.4 (w) x 0.5 m H	4	590
<i>Pulicaria maritima (indigenous)</i>	Coastal Headland Pea	300mm	0.4 (w) x 0.4 m H	4	590
<i>Vicia hederacea (Native)</i>	Native Violet	150mm	0.4 (w) x 0.5 m H	4	590
PM04 - Planting Mix 04 Littoral Rainforest Native Entry Planting					
	Total Area (sq. m)				
	546.5				
Trees					
<i>Litseaodace monostachya</i>	Walking Stick Palm	300mm	1.3 (w) x 3m H	AS SHOWN	14
Large Shrubs					
<i>Hibiscus splendens</i>	Pink Hibiscus	300mm	3 (w) x 4m H	AS SHOWN	2
<i>Mossomia affine</i>	Native Lassandra	300mm	1.5 (w) x 2m H	AS SHOWN	1
<i>Tabeanamarandiana Pandacajui</i>	Banana Bush	300mm	2 (w) x 3m H	AS SHOWN	10
<i>Tasmanian insipida</i>	Brush Pepperbush	300mm	2.5 (w) x 2.4 m H	AS SHOWN	4
Shrub - Medium Shrubs					
<i>Alpinia acrostachya</i>	Native Ginger	300mm	1.5 (w) x 2m H	0.25	32
<i>Adiantum formosum</i>	Blackstem	300mm	0.4 (w) x 0.3 m H	2	259
<i>Adiantum hypnidium</i>	Rock Maidenhair	300mm	0.4 (w) x 0.3 m H	2	259
<i>Asplenium nidus</i>	Bird's Nest Fern	300mm	0.4 (w) x 0.3 m H	2	259
Groundcover					
<i>Vicia hederacea (Native)</i>	Native Violet	150mm	0.4 (w) x 0.5 m H	3	388
Planting to Fences (FNI) and Backsides (BNA) / CAPA					
<i>Callerya australis</i>	Burnt Wistaria	200mm	2 (w) x 10m H	1 per linear m	54
<i>Pandora pandorosa</i>	Wonga Wonga Vine	200mm	2 (w) x 10m H	1 per linear m	54

02	14/4/21	SSDA			MJ
01	26/3/21	SSDA			KT
rev	date	name			by
					chk

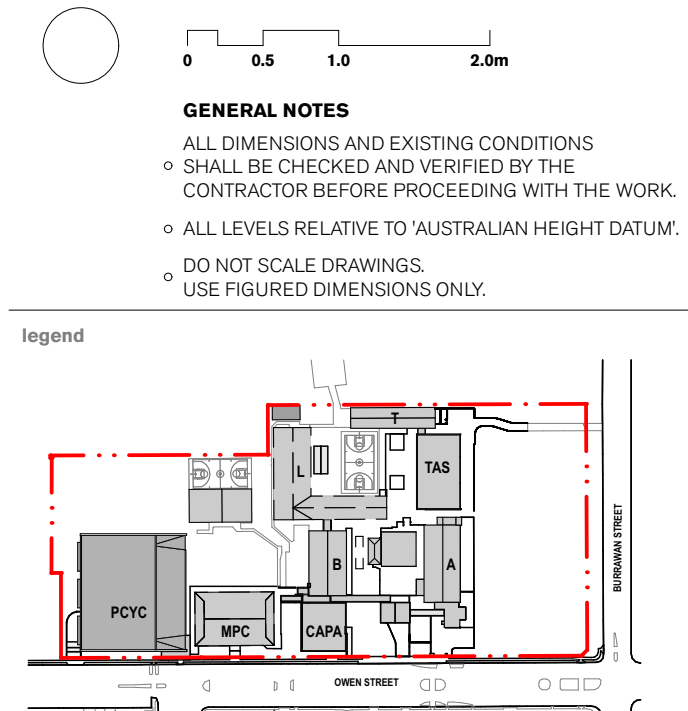
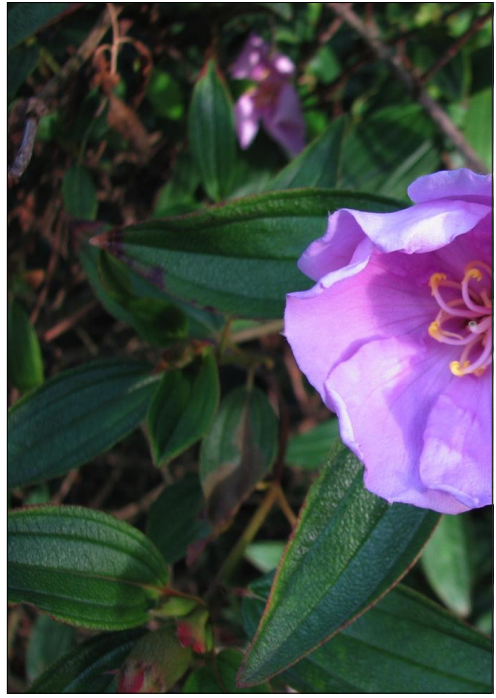
fjmt studio architecture interiors landscape urban community
sydney melbourne uk
Level 5, 70 King Street t +61 2 9251 7077 w fjmtstudio.com

project

Hastings Schools Port Macquarie
Hastings Secondary College
Port Macquarie NSW 2444

title
Landscape Planting Plans
Planting Plan - Zone 2 PCYC

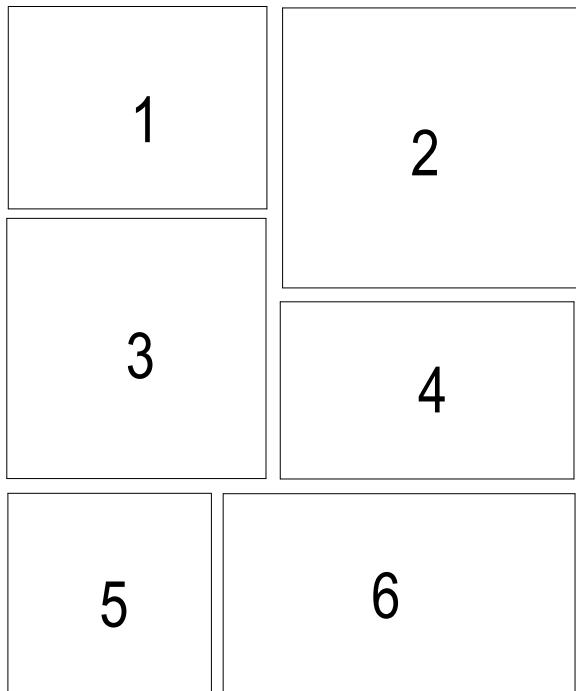
scale	1:200 @ A1	first issued	26/3/21
project code		sheet no.	revision
HSPM		SSDA-880002	02



BOTANICAL NAME	COMMON NAME	INDICATIVE CONTAINER SIZE	Plant Size	SPACING (per sq.m)	QUANTITY
TREES					
Toona Cilata	Native Red Cedar	500L		AS SHOWN	1
Banksia integrifolia	Coast Banksia	75L		AS SHOWN	12
Brachybotrys acerifolia	Blowarra Flame Trees	75L		AS SHOWN	1
Eucalyptus grandis	Rose Gum	75L		AS SHOWN	1
Eucalyptus obovata	Sweep Gum	75L		AS SHOWN	1
Eucalyptus propinqua	Grey Gum	75L		AS SHOWN	1
Elaeagnus reticulata	Blueberry Ash	75L		AS SHOWN	1
FMSH - Planting Mix 03					
Native Entry Planting	Total Area (sq.m)				
	665				
Coastal Headland					
Casuarina glauca (Cousin It) (Native)	Dwarf Sheoak	150mm	0.4 (w) x 0.1m H	2	295
Dianella caerulea (Indigenous)	Blue Flax Lily	150mm	0.3 (w) x 0.4m H	2	295
Lambertia formosa (Indigenous)	Mountain Devil	300mm	1.5 (w) x 1.5m H	0.2	30
Mitella rubrifolia (Indigenous)	Heath Mitella	300mm	0.4 (w) x 0.5m H	4	590
Pultanea maritima (Indigenous)	Coastal Headland Pea	150mm	0.4 (w) x 0.4m H	4	590
Viola hederacea (Native)	Native Violet	150mm	0.4 (w) x 0.5m H	4	590
FMSH - Planting Mix 04					
Littoral Rainforest	Total Area (sq.m)				
Native Entry Planting	646.5				
Trees					
Linosyris monostachya	Walking Stick Palm	300mm	1.3 (w) x 3m H	AS SHOWN	14
Large Shrubs					
Hibiscus splendens	Pink Hibiscus	300mm	3 (w) x 4m H	AS SHOWN	2
Lassiaandra affine	Native Lassiaandra	300mm	1.5 (w) x 2m H	AS SHOWN	1
Tabernaemontana Pandacacui	Banana Bush	300mm	2 (w) x 2m H	AS SHOWN	10
Tasmania insipida	Brush Pepperbush	300mm	2.5 (w) x 2.4m H	AS SHOWN	4
Small - Medium Shrubs					
Alpinia arundinacea	Native Ginger	300mm	1.5 (w) x 2m H	0.25	32
Adiantum formosum	Blackstem	300mm	0.4 (w) x 0.3m H	2	255
Adiantum hispidum	Rough Maidenhair	300mm	0.4 (w) x 0.3m H	2	255
Asplenium nidus	Bird's Nest Fern	300mm	0.4 (w) x 0.3m H	2	255
Groundcover					
Viola hederacea (Native)	Native Violet	150mm	0.4 (w) x 0.5m H	3	388
Planting to Fences (F) and Balustrades (BAL) CAPA					
Collinsia australis	Blunt Wattle	200mm	2 (w) x 15m H	1 per linear m	54
Pandora pandorana	Wonga Wonga Vine	200mm	2 (w) x 15m H	1 per linear m	54

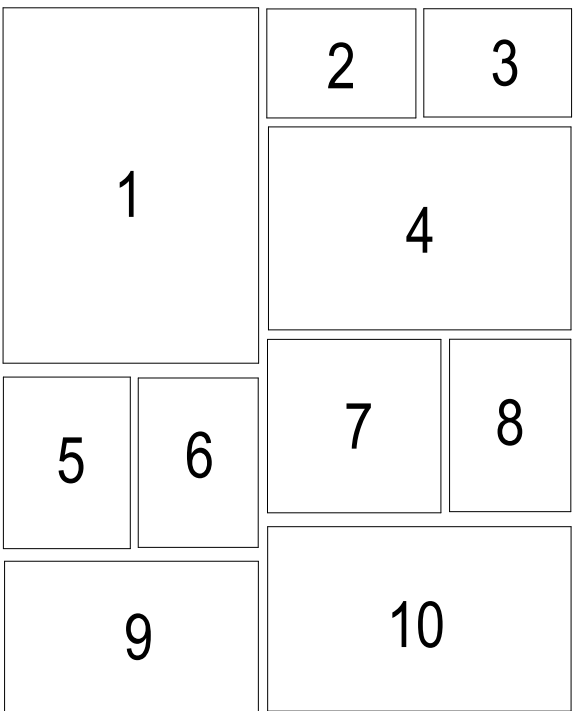
Proposed Planting Mix 03

- 1 MIRBELIA RUBIFOLIA - HEATH MIRBELIA
- 2 DIANELLA CAERULEA - FLAX LILY
- 3 CASUARINA GLAUCA - COUSIN IT
- 4 DOODIA MEDIA - RASP FERN
- 5 VIOLA HEDERACEAE - NATIVE VIOLET
- 6 DIANELLA CAERULEA - FLAX LILY



Proposed Planting Mix 04

- 1 LINOSPADEX MONOSTAYCHA - WALKING STICK PALM
- 2 TASMANIA INSIPIDA - BRUSH PEPPER
- 3 TABEMAEMONTANA PANDACAQUI - BANANA BUSH
- 4 HIBISCUS SPLNDENS - PINK HIBISCUS
- 5 ALPINIA ARUNDUNLLIANA - NATIVE GINGER
- 6 ADIANTUM FORMOSUM - BLACK STEMMED MAIDENHAIR
- 7 ADIANTUM - HISPIDIUM - ROUGH MAIDENHAIR
- 8 MELASTOMAAFINNE - NATIVE LASSIANDRA
- 9 VIOLA HEDERACEAE - NATIVE VIOLET
- 10 ASPLENIUM NIDUS - BIRD'S NEST FERM=N



02	14/4/21	SSDA	MJ
01	26/3/21	SSDA	KT
rev	date	name	by

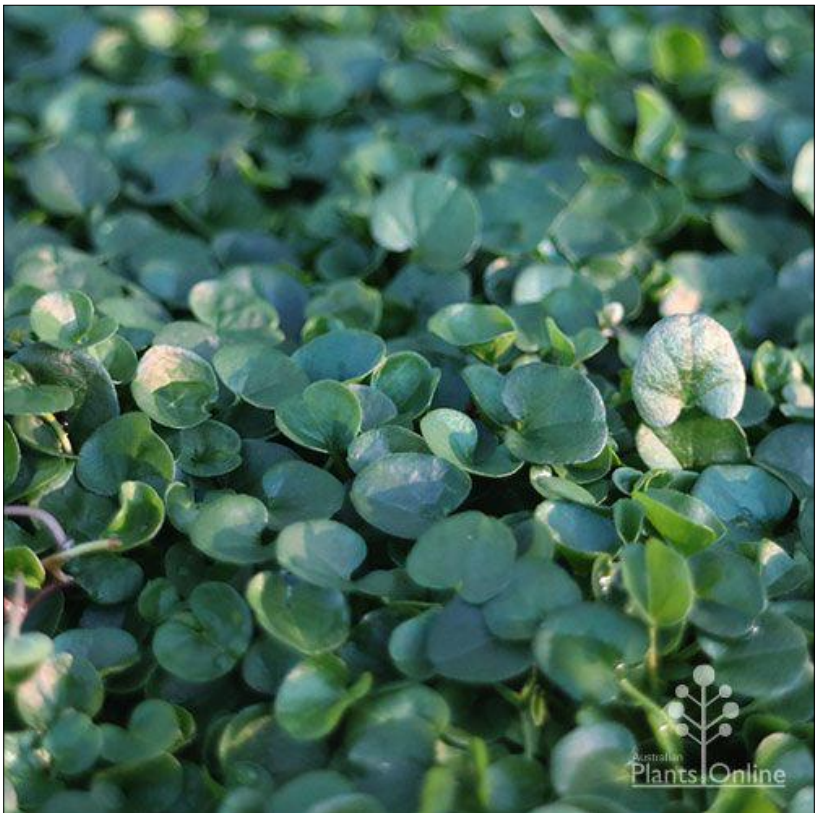
fjmt studio architecture interiors landscape urban community
sydney melbourne uk
Level 5, 70 King Street t +61 2 9251 7077 w fjmtstudio.com



project
Hastings Schools Port Macquarie
Hastings Secondary College
Port Macquarie NSW 2444

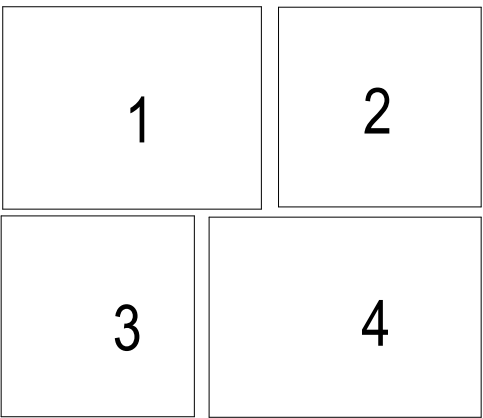
title
Landscape Planting Plans
Planting Palette and Schedule - 1 of 2

scale	1:50 @ A1	first issued	26/3/21
project code		sheet no.	revision
HSPM		SSDA-880050	02



Proposed Planting Mix 02

- 1 ACTINOTUS HELIANTHII - FLANNEL FLOWER
- 2 DICHONDRA REPENS - SILVER FALLS
- 3 PTERIDIUM ESCULENTUM - AUSTRAL BRACKEN
- 4 BANKSIA SPINULOSA - BIRTHDAY CANDLES



BOTANICAL NAME	COMMON NAME	INDICATIVE CONTAINER SIZE	Plant Size	SPACING (per sq.m)	QUANTITY
TREES					
Toona Cilata	Native Red Cedar	500L		AS SHOWN	1
Banksia integrifolia	Coast Banksia	75L		AS SHOWN	12
Brachycton acerifolius	Illawarra Flame Trees	75L		AS SHOWN	1
Eucalyptus grandis	Rose Gum	75L		AS SHOWN	1
Eucalyptus obovata	Swamp Gum	75L		AS SHOWN	1
Eucalyptus propinqua	Grey Gum	75L		AS SHOWN	1
Elaeocarpus reticulatus	Blueberry Ash	75L		AS SHOWN	1
PM03 - Planting Mix 03 Native Entry Planting	Total Area (sq.m)				
	885				
Coastal Headland					
Casuarina glauca Cousin It (Native)	Dwarf Sheoak	150mm	0.4 (w) x 0.1m H	2	295
Dianella caerulea (Indigenous)	Blue Flax Lilly	150mm	0.3 (w) x 0.4m H	2	295
Lambertia formosa (Indigenous)	Mountain Devil	300mm	1.5 (w) x 1.5m H	0.2	30
Mitella rubrifolia (Indigenous)	Heath Mitella	300mm	0.4 (w) x 0.5m H	4	590
Pultanea maritima (Indigenous)	Coastal Headland Pea	150mm	0.4 (w) x 0.4m H	4	590
Viola hederacea (Native)	Native Violet	150mm	0.4 (w) x 0.5m H	4	590
PM04 - Planting Mix 04 Literal Rainforest	Total Area (sq.m)				
	646.5				
Trees					
Linosyadex monostachya	Walking Stick Palm	300mm	1.3 (w) x 3m H	AS SHOWN	14
Large Shrubs					
Hibiscus splendens	Pink Hibiscus	300mm	3 (w) x 4m H	AS SHOWN	2
Melastoma affine	Native Lessandra	300mm	1.5 (w) x 2m H	AS SHOWN	1
Tabernaemontana Pandacacui	Banana Bush	300mm	2 (w) x 2m H	AS SHOWN	10
Tasmania insipida	Brush Pepperbush	300mm	2.5 (w) x 2.4m H	AS SHOWN	4
Small - Medium Shrubs					
Alpinia arundinelliana	Native Ginger	300mm	1.5 (w) x 2m H	0.25	32
Adiantum formosum	Blackstem	300mm	0.4 (w) x 0.3m H	2	259
Adiantum hispidum	Rough Maidenhair	300mm	0.4 (w) x 0.3m H	2	259
Asplenium nidus	Bird's Nest Fern	300mm	0.4 (w) x 0.3m H	2	259
Groundcover					
Viola hederacea (Native)	Native Violet	150mm	0.4 (w) x 0.5m H	3	388
Planting to Fences (FN) and Balustrades (BAL1) CAPA	Total Linear Meter: 54 lin. M				
Callerya australis	Blunt Wisteria	200mm	2 (w) x 10m H	1 per linear m	54
Pandora pandorana	Wonga Wonga Vine	200mm	2 (w) x 10m H	1 per linear m	54

00.51.02.0m

GENERAL NOTES

ALL DIMENSIONS AND EXISTING CONDITIONS SHALL BE CHECKED AND VERIFIED BY THE CONTRACTOR BEFORE PROCEEDING WITH THE WORK.
ALL LEVELS RELATIVE TO 'AUSTRALIAN HEIGHT DATUM'.
DO NOT SCALE DRAWINGS.
USE FIGURED DIMENSIONS ONLY.

legend