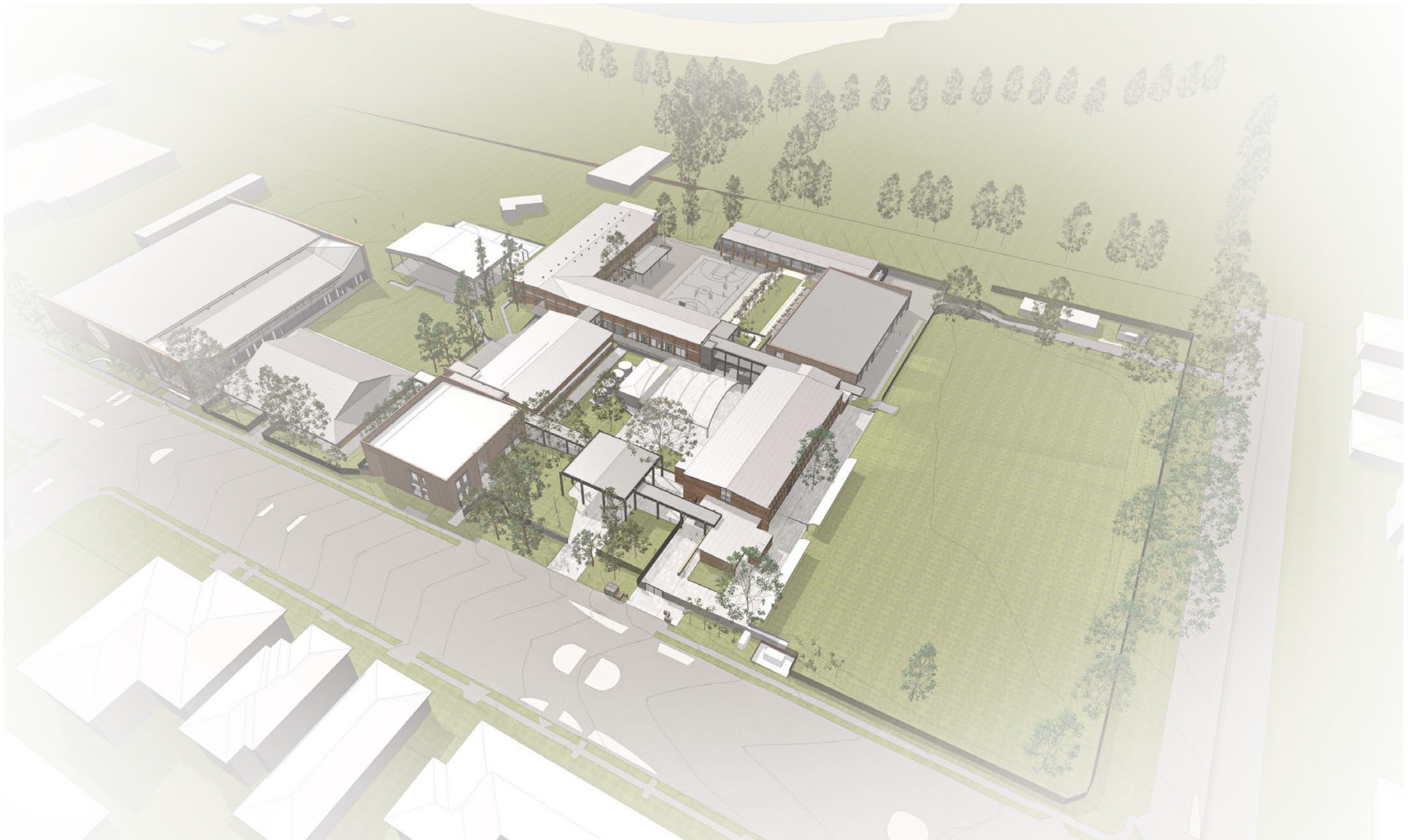
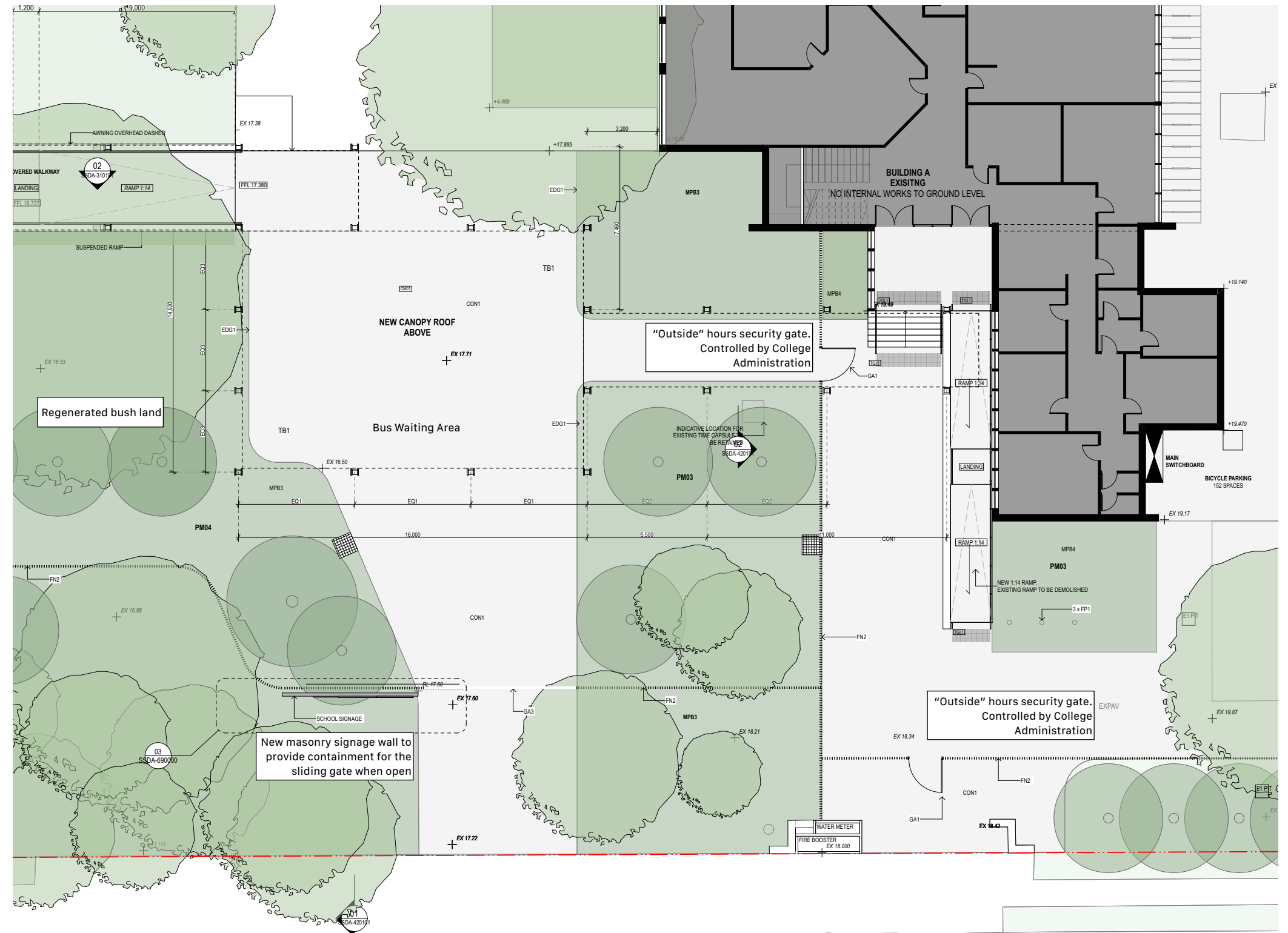


# Functional Organisation



# Functional Organisation • Entrance Courtyard

- Celebrating the entrance with a new identity for the College
- Celebrating the re envisaged landscape campus and responding to the scale of the mature trees (a new bush land)
- Engagement with the Birpai community to understand the narratives of Country and how they can be understood through the entrance experience of the campus
- Large scale identity to be visible from the surrounding context
- Unifying the recent additions across the campus which are of a conflicting architectural expression to the 1960's master plan (curved COLA and Canteen)
- Simple, geometric forms providing orientation, shade and protection
- Warm organic materiality through the use of acidulated timber and pre finished steel (a colour to be selected to reflect the local context). The timber will be used on both the soffit and the columns.
- Engagement with the Aboriginal education groups - Clontarf Academy and Sista Connect and local artists to create a bespoke artwork for the campus.
- Welcoming and secure  
The fencing is relocated from the front of the school and replaced with an inset electronic gate. This will provide a more inclusive and welcoming arrival experience.
- Amenity  
Shade, waiting, equitable drop - off
- Canopy Covered Bus Zone  
Undercover area to be provided for bus waiting.



View from Owen Street



# Functional Organisation • Entrance Courtyard

View looking towards CAPA to the north



# Functional Organisation • CAPA Ground Level

## New Cultural and Performing Arts Facility Overview

- Located at the front face of the campus providing new opportunities for community engagement.
- Respecting the alignment of the existing fabric of Block B and also orientated to maximise passive design opportunities.

## Built Form

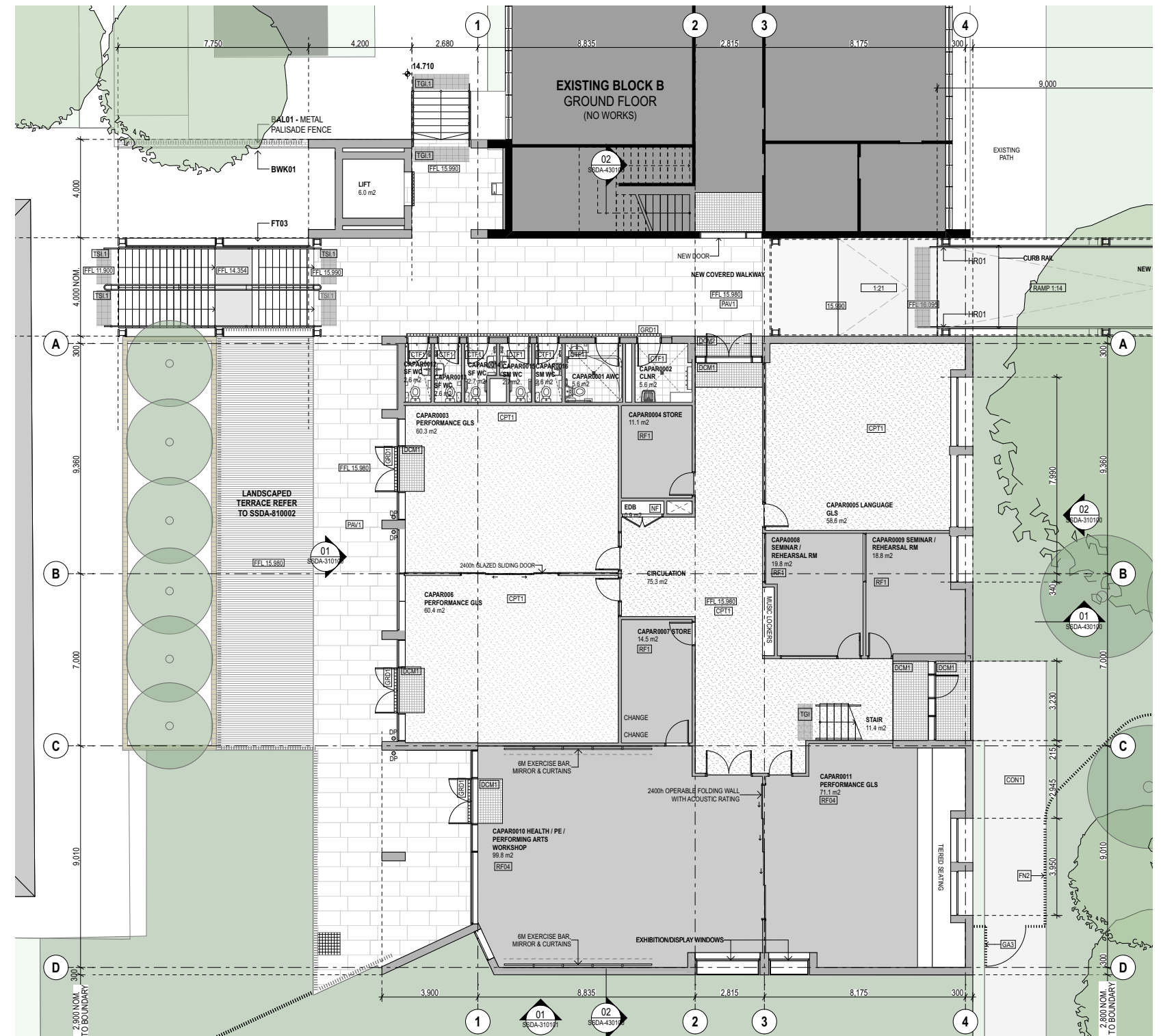
- Predominantly north/south orientation to maximise daylight, but minimise thermal load
- Building face set 2.5m from boundary to create a “front face” to the campus. It is proposed that the fence line will be removed at the CAPA so that building becomes boundary.
- Opportunity for student display with “Display Boxes” located to the western elevation
- Generous north facing balcony for protected outdoor learning from both levels
- Connectivity of Workshops and General Learning Studios using sliding, glazed doors to provide flexibility for a diversity of learning settings
- Performing Arts and Health Workshops connect directly to the outdoors
- 9m x 7.5m structural grid, aligning with the current Educational Grid developed by the Department of Education to address gutter flexibility

## Functional Layouts

- Amenities accessed from covered north/south link. (This is a similar across all new shared amenities in the Campus)

## Lift location and connections

- External lift to enable connection between Block B and CAPA.
- Best practice DDA access to lower ovals and MPC
- Clear way-finding building upon existing systems
- Use of stair in Block B for fire egress to reduce the number of stairs in CAPA
- The main stair in CAPA has a high level of visibility to the entrance courtyard through full height glazing. Access is provided directly through to the courtyard.



# Functional Organisation • CAPA Level 1

## Lift location and connections

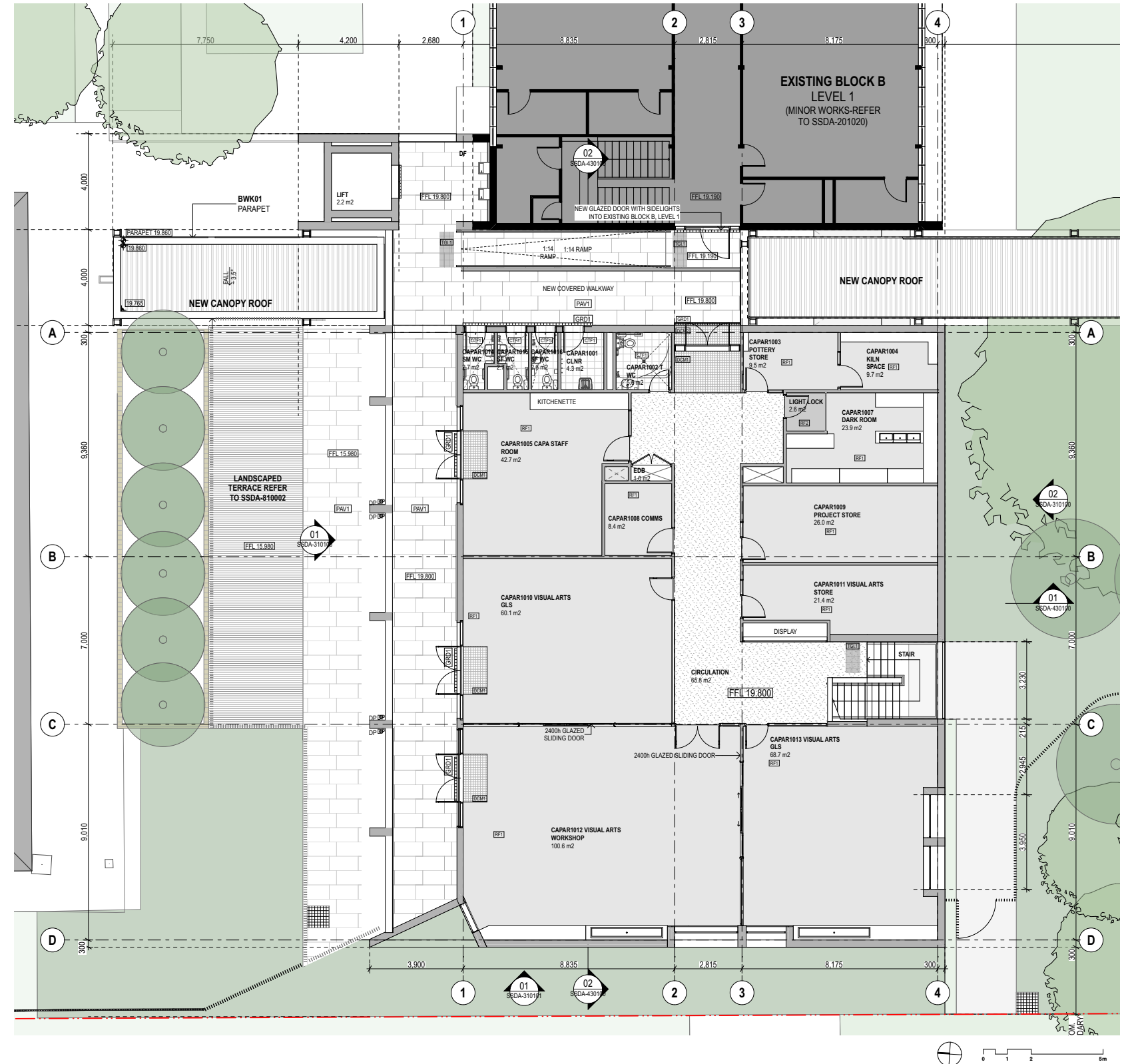
- Direct connection to Block B, providing undercover access to Block L beyond

## Built Form

- Connections to the landscape through large format windows
- Visual Arts GLS and Workshop and the Staff Room have access to external covered terrace

## Functional Layouts

- Amenities accessed from covered north/south link. (This is a similar across all new shared amenities in the Campus)
- Visual Arts Workshop and adjacent Studios can be commented to provide a large flexible area.
- Opportunities for display of student works align access ways and in specific display cases



# Functional Organisation • CAPA

View looking south/east towards northern outdoor learning terrace



# Functional Organisation • CAPA

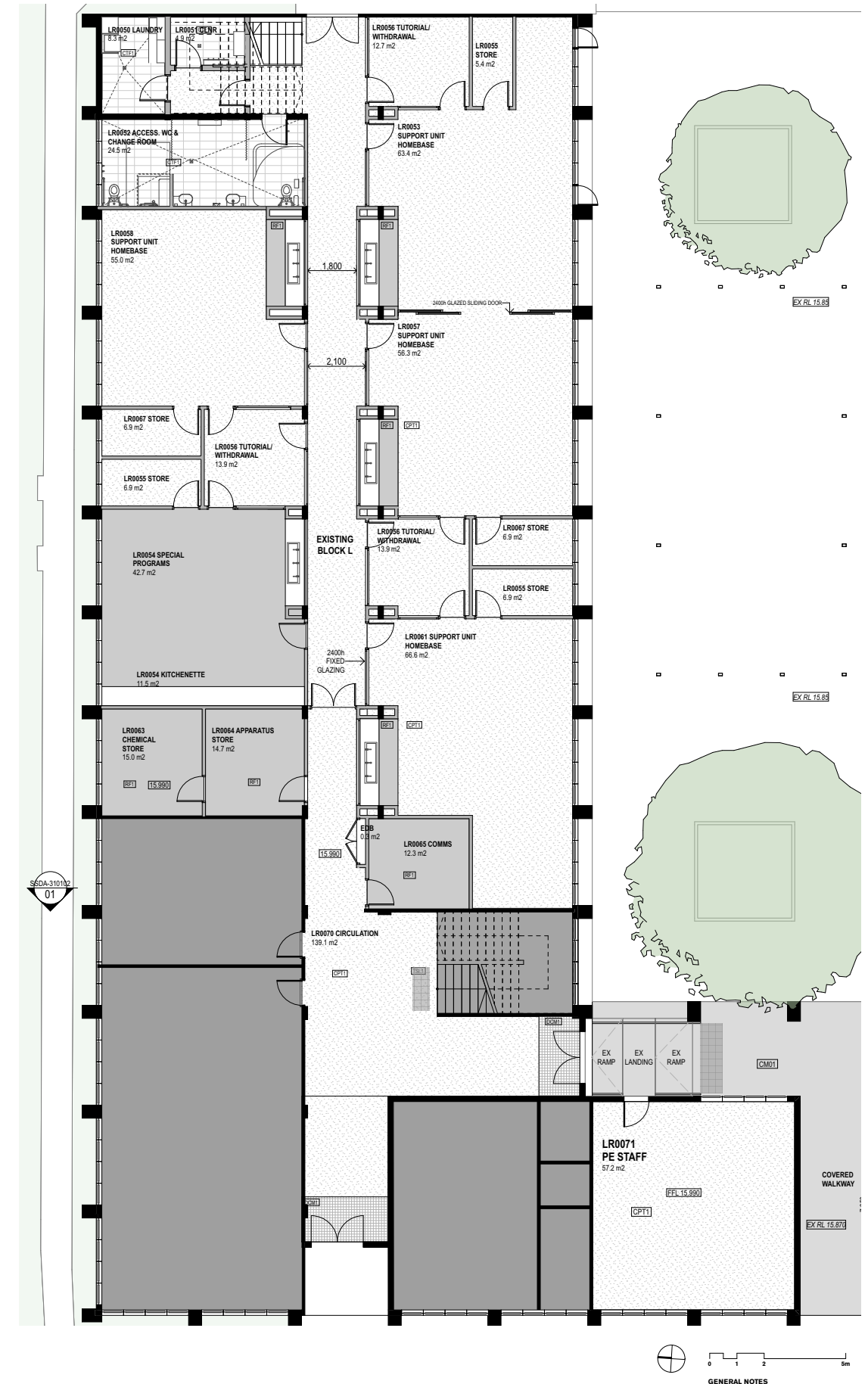
View looking at southern courtyard



## Functional Organisation • Building L Ground Level

## Building L Supported Learning Unit

- three new Supported Learning Home Base Units will be provided within the existing envelope of Building L. (add text from ESG)
- existing internal fabric will be removed
- new Special Programs with associate kitchenette. Kitchen will be able to be accessed from both sides to provide a more flexible response
- new Practical Activities Area with a centralised wet area. Similar to the Special Programs, this area can be opened up to the adjacent circulation zone and used as a shared learning hub
- associated amenities (hoist change), laundry and cleaner's room
- Chemical Store and Apparatus Store to be relocated to a closer proximity to the Science Facility. (Note Science Laboratories are located adjacent to the new Chemical Store and on Ground Level Building B.
- new (upgraded) Communications Room to serve Building B



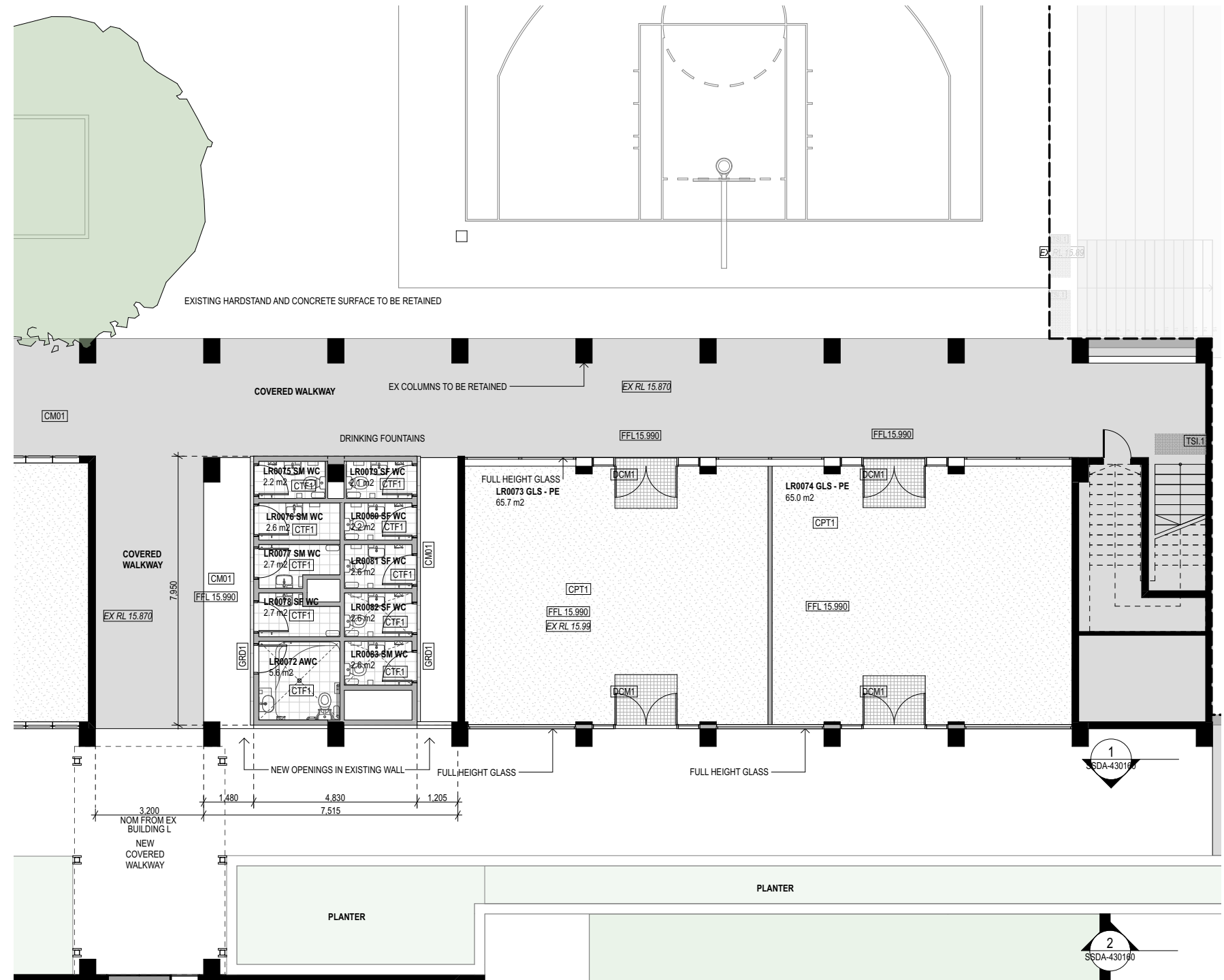
# Functional Organisation • Building L Ground Level

## General Learning Studios

- two new General Learning Studio's are provided within the envelope of the existing Building L Ground Level.
- originally this area was an open undercroft, therefore the infilled faced (brickwork and glazing) is removed and new full height aluminium framed glazing inserted. This will provide visibility across from the upper to the lower courtyards and reinstate the original design intent. These classrooms are intended to be flexible learning spaces with direct access to the outside

## Amenities

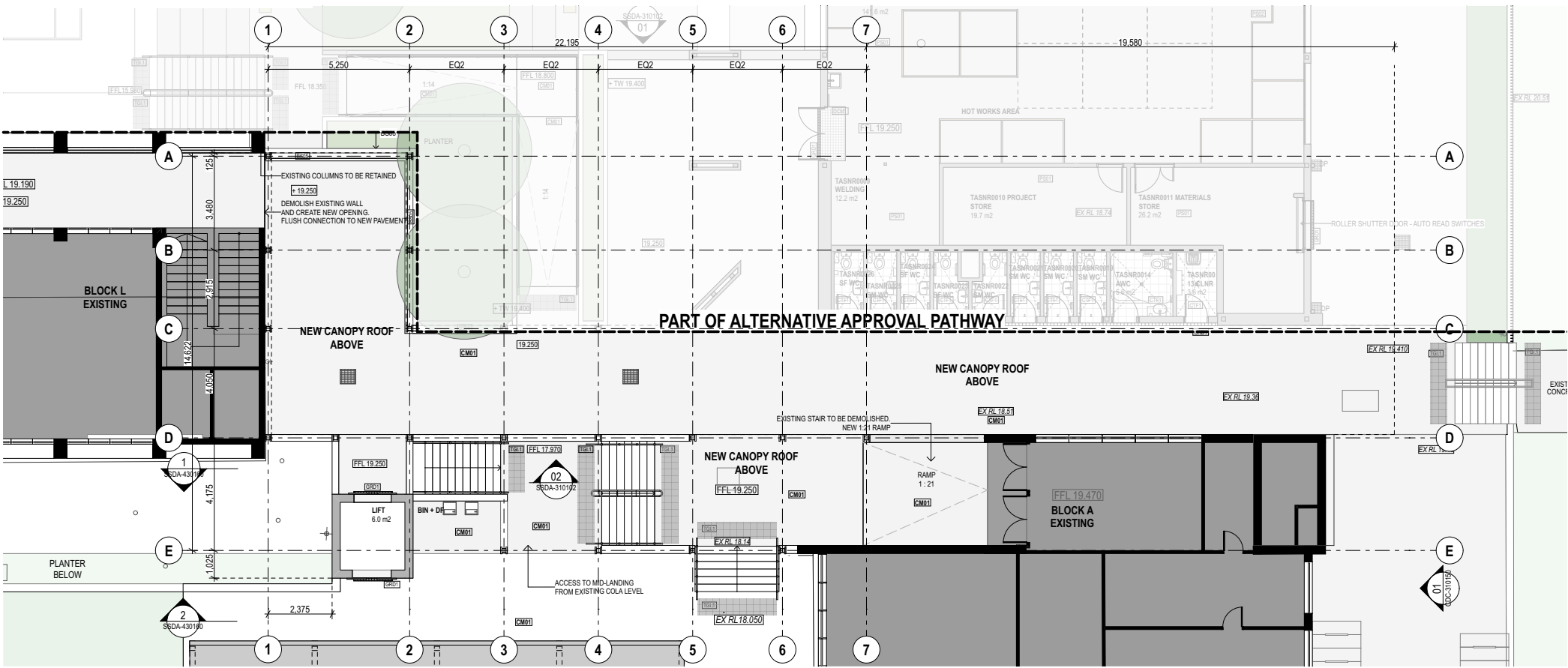
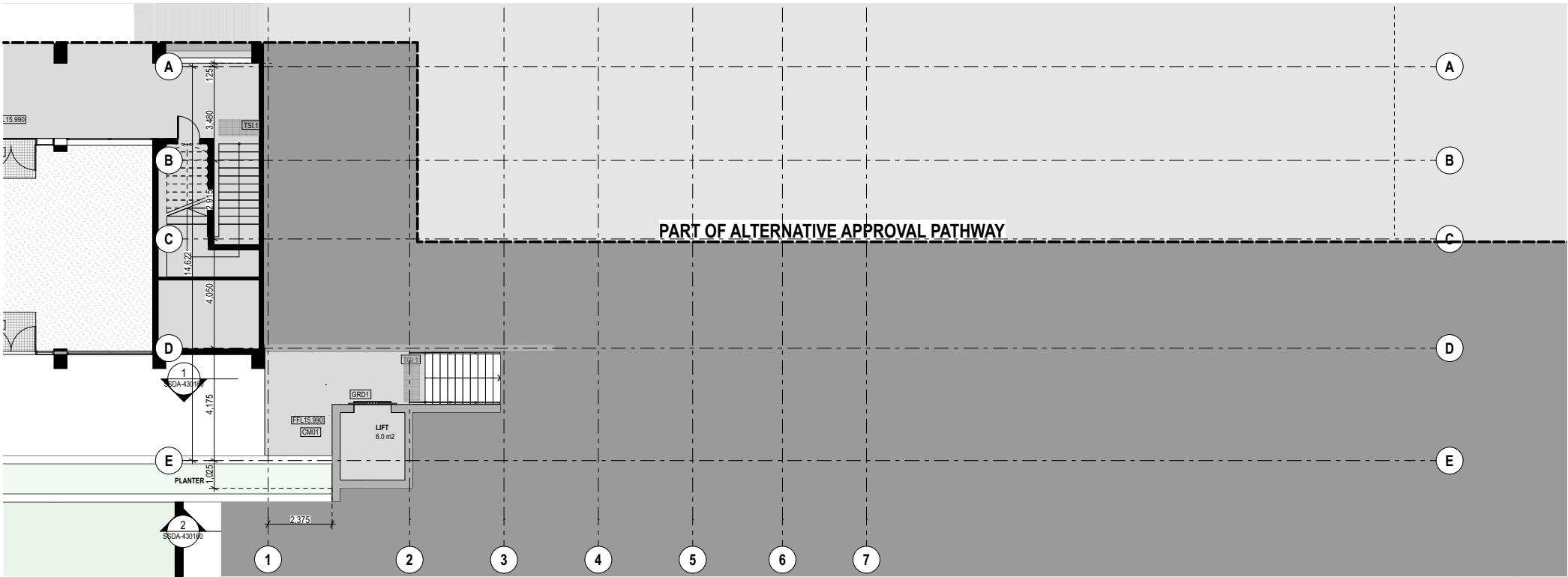
- the existing amenities are refurbished to provide new amenities using a self contained cubicle layout. 1 accessible, 2 ambulatory and 7 standard facilities are provided.
- Drinking Fountains are located facing the existing courts



# Functional Organisation • Link way Lower Ground and Ground Level

## Lift and connecting stairs

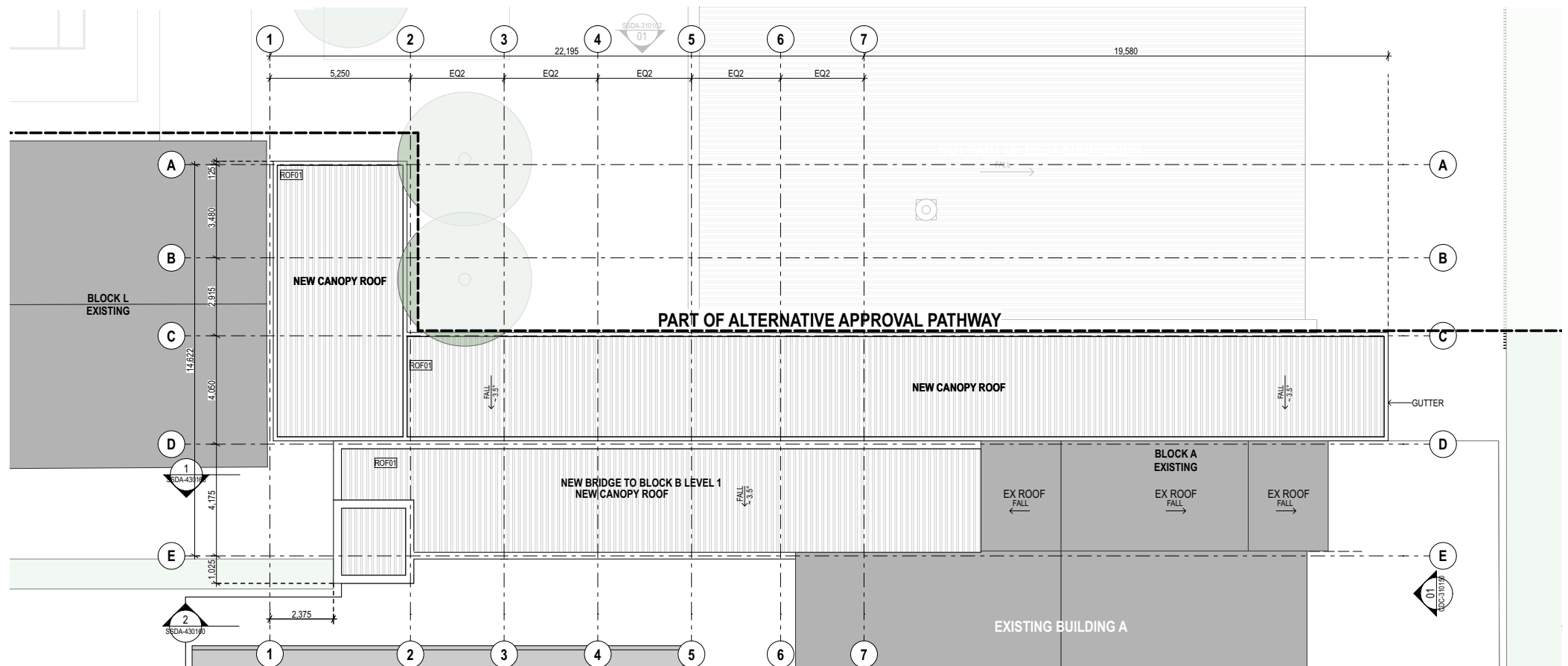
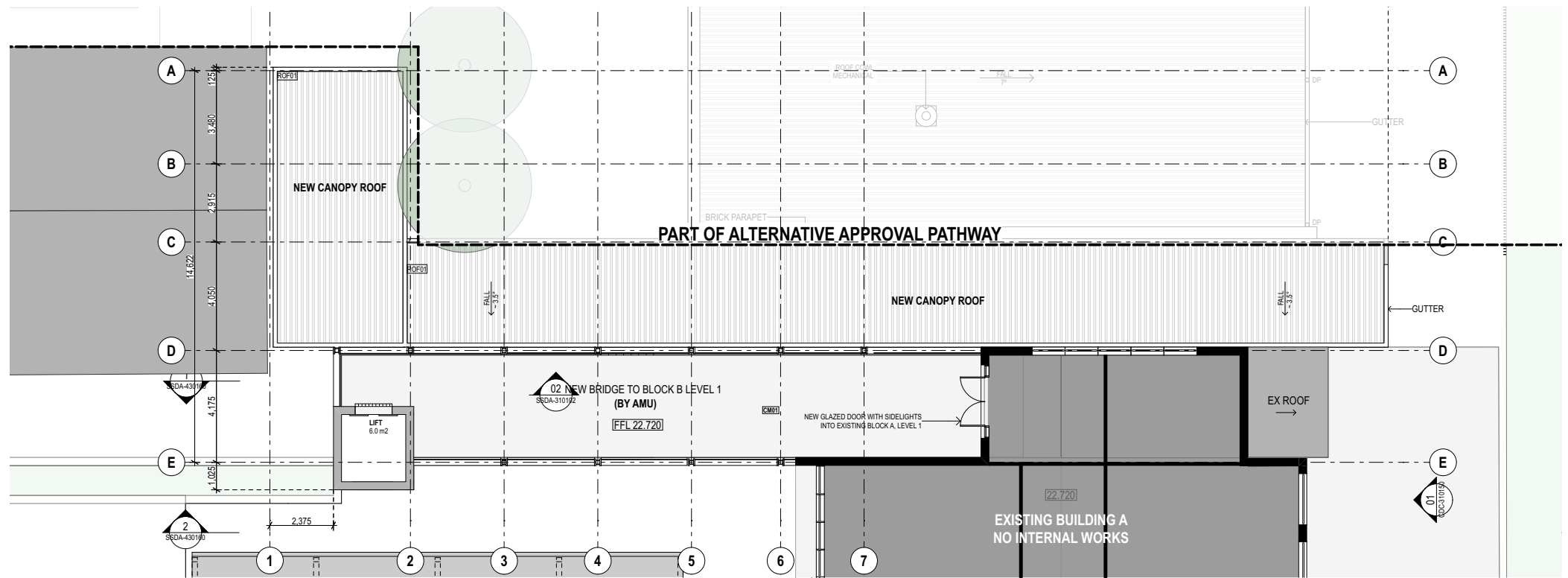
- a new lift provides accessible access to the three main courtyards supported by connecting stairs
- the materiality of the lift is off form concrete
- the stairs and on grade access ways to Building A and L are protected by canopies with a similar language to the entrance canopy



## Functional Organisation • Link way Level 1 and Roof

### Lift and connecting stairs

- a new lift provides accessible access to the three main courtyards supported by connecting stairs
- the materiality of the lift is off form concrete
- the stairs and on grade access ways to Building A and L are protected by canopies with a similar language to the entrance canopy



## Functional Organisation • View of Link way looking west

Note - the TAS Building and associated landscaping to the foreground is not part of this SSDA.



## Functional Organisation • View of Link way looking south





## PCYC • View of Verandah and western elevation



# Functional Organisation • PCYC • Ground Level

## Entrance

- a double height transitional zone is provided to create a public verandah, on axis to Gordon Street. This provides a welcoming entry experience for the PCYC, of an appropriate civic scale. A reception counter is located to the east of the entrance with a high level of visibility to the courts and the foyer

## Foyer

- the foyer consists of 2 spaces: an entry zone and the Youth Hub, which is an informal connected space located outside of the main security line. The Police Office is located adjacent to this space to provide connection and surveillance. The PCYC Administration Office, again with full glazed walls to the Youth Hub and the Courts, provides additional connection.

## Circulation

- circulation across the PCYC is via the generous access way which separates the support areas from the courts. This access way is fully glazed at both ends with an open stair which provides views to the community beyond and the enhances activation of the precinct.

## Support Areas

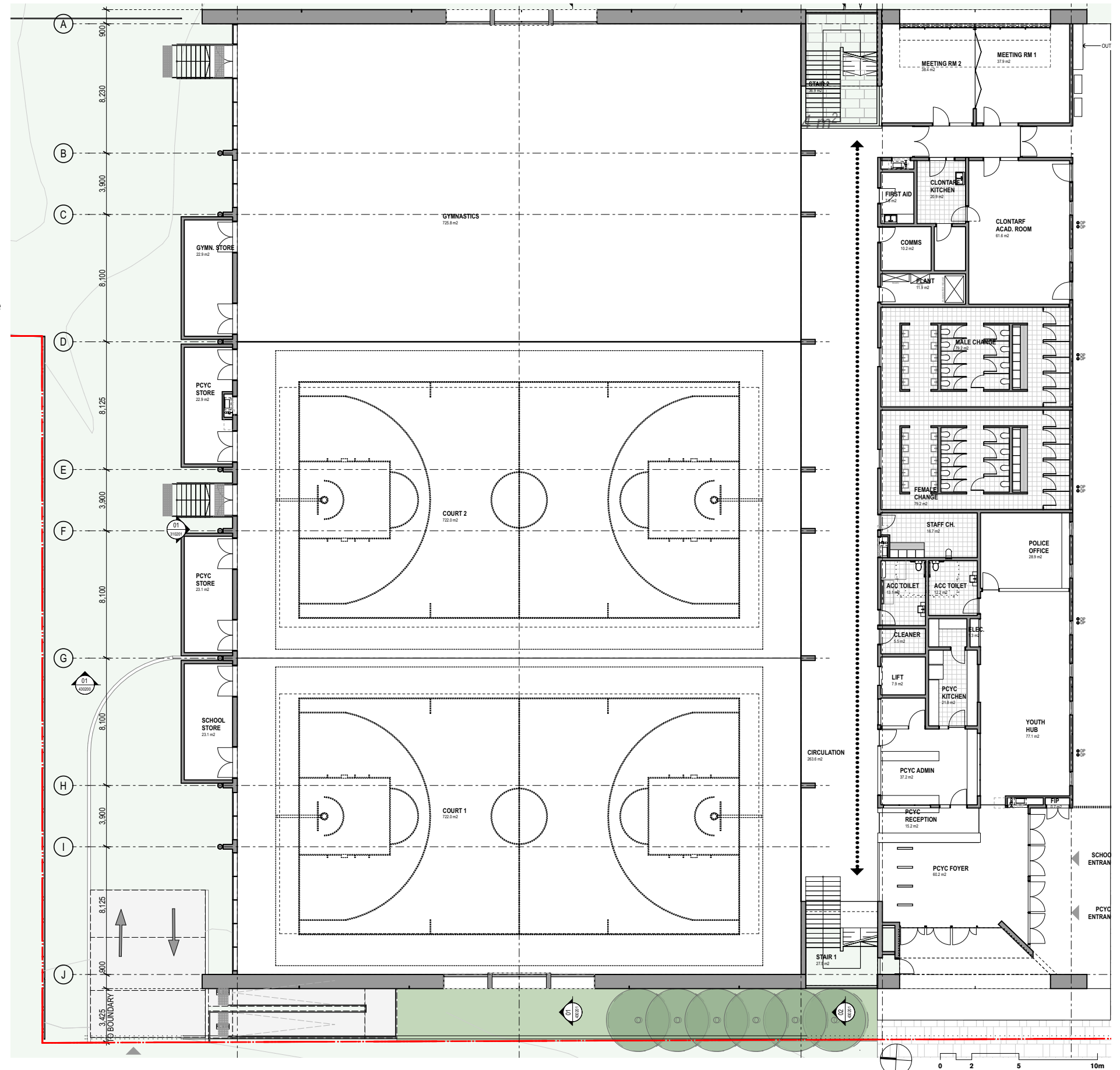
- Amenities, a shared Kitchen, Staff Change and a Cleaner's Hub are located to the centre of the plan.

## Clontarf Academy and Meeting rooms

- The Clontarf Academy is located to the east of the site with views across the playing fields. it has access to a covered terrace and an external landscaped seating area.
- 2 connected meeting rooms are also located to the east of the site.
- an additional entrance is provided with a connection back to Hastings Secondary college. this can be used by the College as a secure entrance.

## Courts

- 2 games courts and 1 gymnastics court is provided



# Functional Organisation • PCYC • Level 1

## Weights Room

—a double height transitional zone is provided to create a public verandah, on axis to Gordon Street. This provides a welcoming entry experience for the PCYC, of an appropriate civic scale. A reception counter is located to the east of the entrance with a high level of visibility to the courts and the foyer

## Multi Purpose Rooms

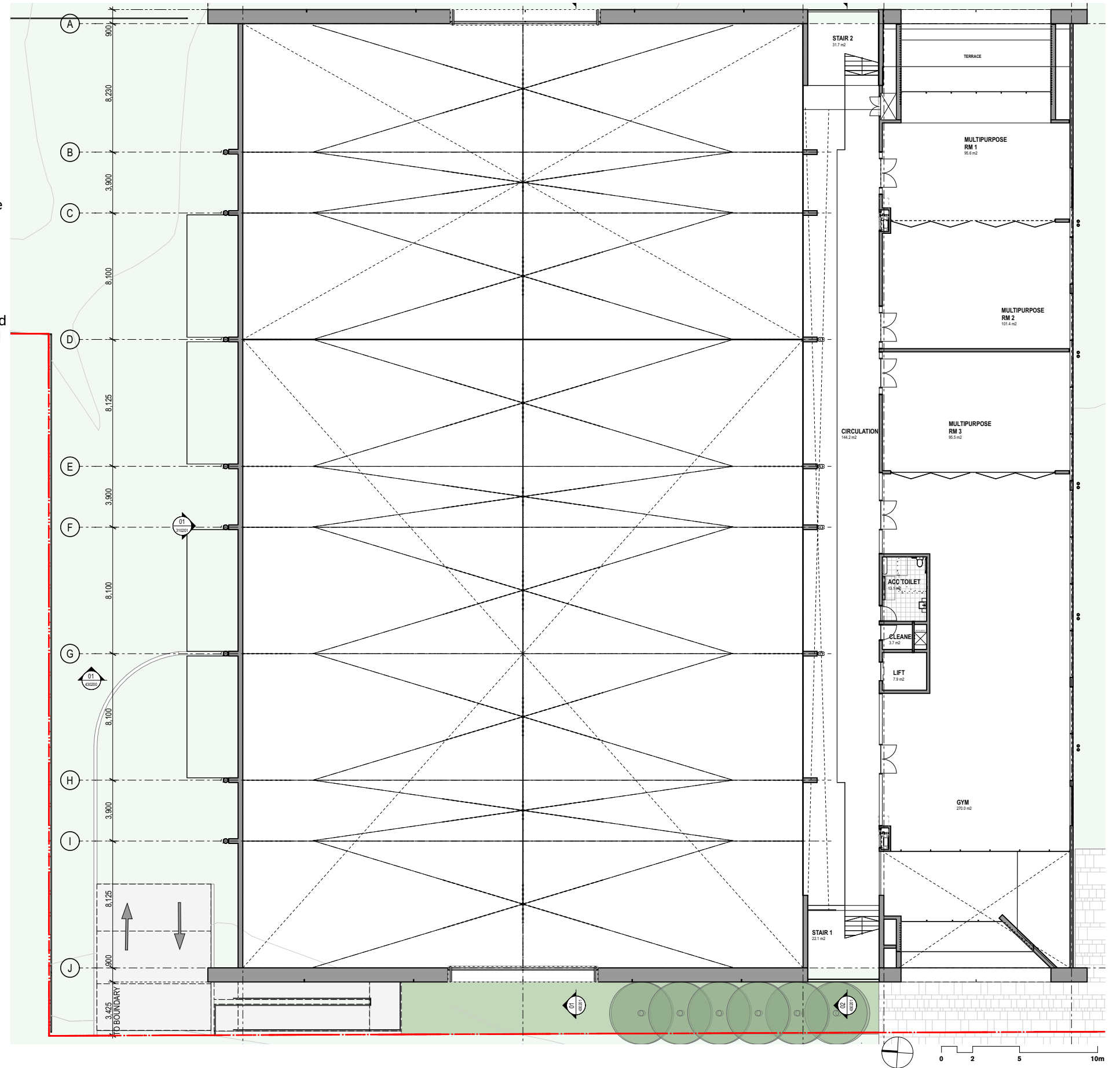
—3 multi - purpose rooms are located to the east of the facility. The 2 eastern rooms are connected with an operable wall and have access to an external verandah with views across the playing field to the east. The third room is associated with the Weights Area and can be used as a connected Studio.

## Circulation

—circulation across the PCYC is via the generous access way which separates the support areas from the courts. This access way is fully glazed at both ends with an open stair which provides views to the community beyond and the enhances activation of the precinct. At the upper level it is protected with a tensile mesh screen and has a void adjacent to the structural columns of the courts

## Support Areas

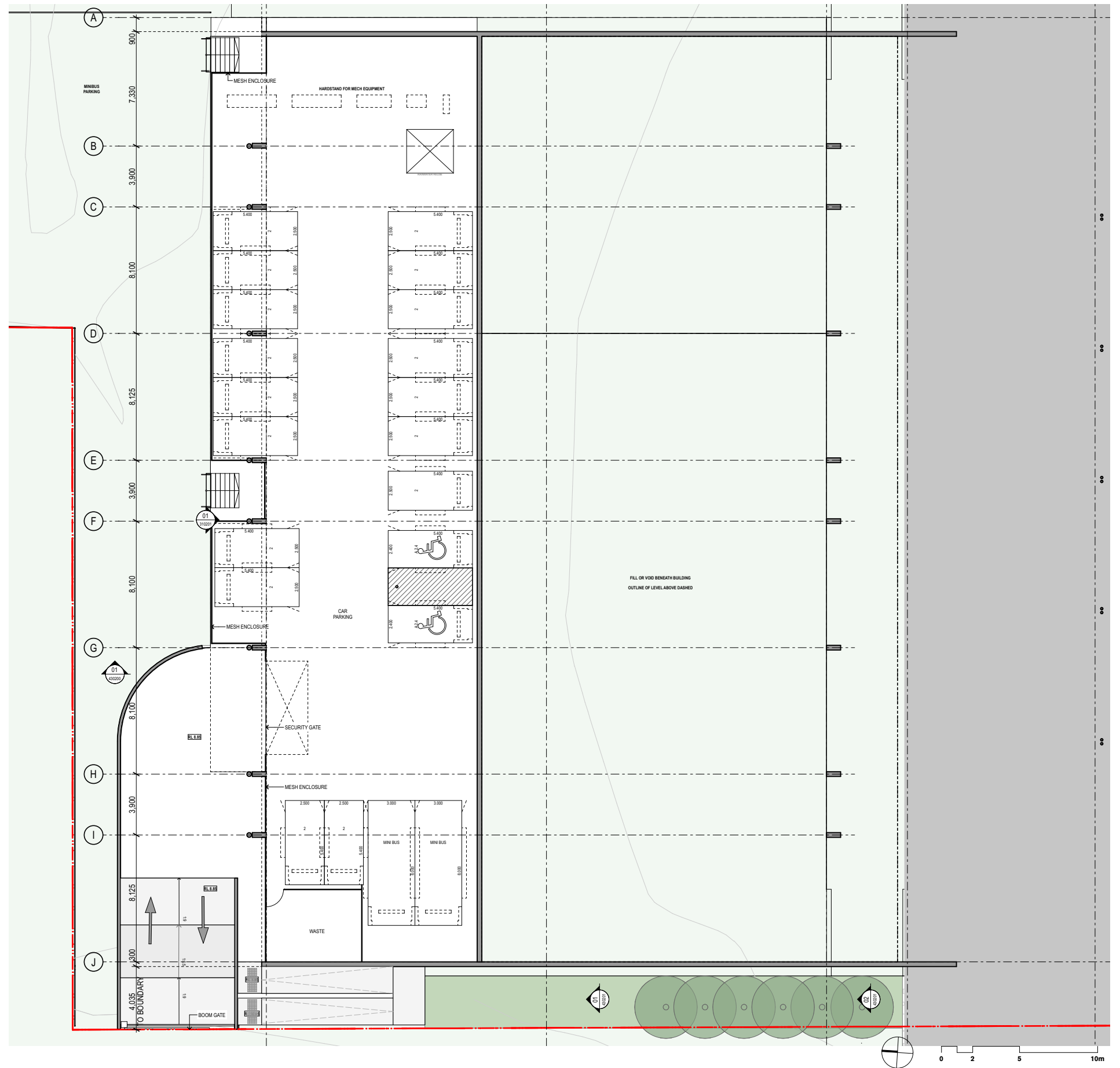
—1 accessible amenity and a Cleaner's Room is provided to service this level.



## Functional Organisation • PCYC • Lower Ground

Carpark

- an undercover, external car parking area is located to the north of the site using the slope of the site to minimise cut and fill. The carpark will be used for staff only and will also accommodate the PCYC vans. Security will be provided via a sliding gate at the base of the entrance ramp and a boom gate to the interface with Owen Street
- the northern elevation of the lower ground car park will be screened to provide security to the site.



## PCYC • View from Gordon Street



# Materiality and Facades

## Material Selection

The materials selected should be economical, functional, durable, sustainable and complimentary to the existing palette of brickwork and off form concrete

The selected colours reference both the existing built forms and the surrounding landscape context - ideally colour is integral with the materials to provide a low maintenance solution. If colour is applied it performs a protective purpose.

It should be specifically noted that the corrosively rating of Port Macquarie Campus is C5 as defined in AS/NZS 2312.2 and described in AS 4312

— C5 - Surf, sea-shore, within 200 m of rough seas & surf beaches, may be extended inland by prevailing winds & local conditions.

A complementary toned face brick is selected to align with the existing buildings. The brick will however be detailed in a contemporary manner to differentiate from the 1960’s fabric. The language of deep set colonnades and balconies with a simple expression of framed glazing, it used in the new buildings, to provide a continuity to the campus.

The linkway, between Building L and B, Building B and CAPA, CAPA and the MPC and Building L and Building A, are either brickwork or steel and timber composite with stainless steel mesh infill. The mesh infill provides a simple and effective solution to site safety and the colonnades set up a new rhythm for the campus.

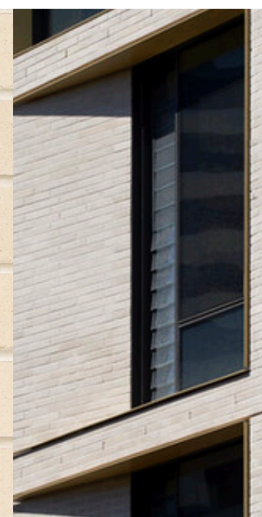
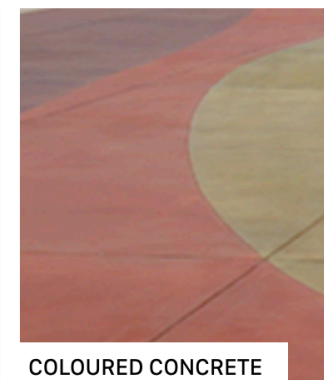
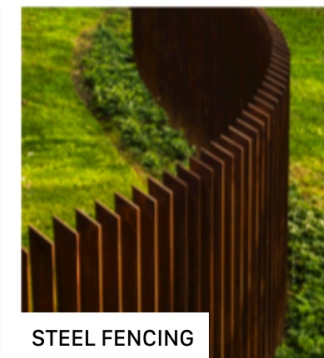
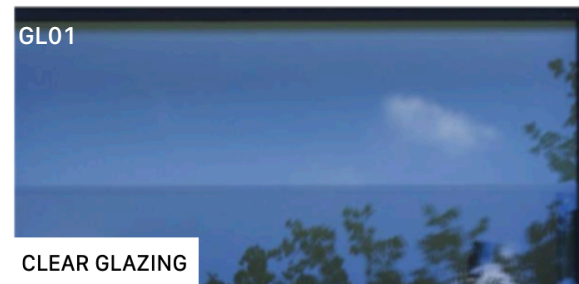
Acidulated timber is used to create an enhanced and new identity for the campus. The intention of the timber is to respond to the natural timber of the site. Timber boarded cladding will also be used for the angled soffits of the PCYC, CAPA and TAS (under the CDC approval).



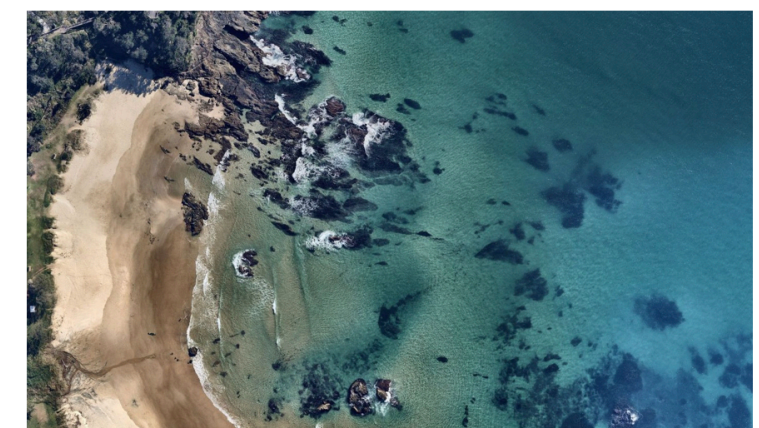
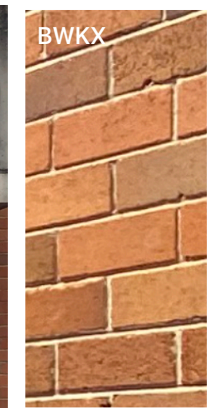
Location	Material
BWK1	Brickwork Type 1 - Face Brick
BW02	Block work, Painted
BWKX	Existing face brick facade
GL01	Glazing - Clear, performance in aluminium framing system
GL02	Glazing - Dark, performance in aluminium framing system
CL01	Integral colour fibre cement cladding, dark tone
CL02	Corrograted cladding, dark tone (Prefinished aluminium or integral colour fibre cement)
CL03	Fibre cement, painted, light tone
CL04	Acidulated timber(Proprietary treated soft wood)
CL05	Cladding, dark tone (Prefinished aluminium or integral colour fibre cement)
CEL4.2	Integral colour fibre cement soffit cladding
FT03	Stainless steel, high tensile mesh with integrated framing
FT04	Composite pre finished (multi coat system) steel structure with acidulated timber cladding
LV01	External louvres, pre finished, powder coated
PF	Pre finished (multi coat system) steel
ROF01	Profile aluminium roof cladding, light tone

## Materiality • Port Macquarie Campus

## Exterior Materials



### Contextual Materiality



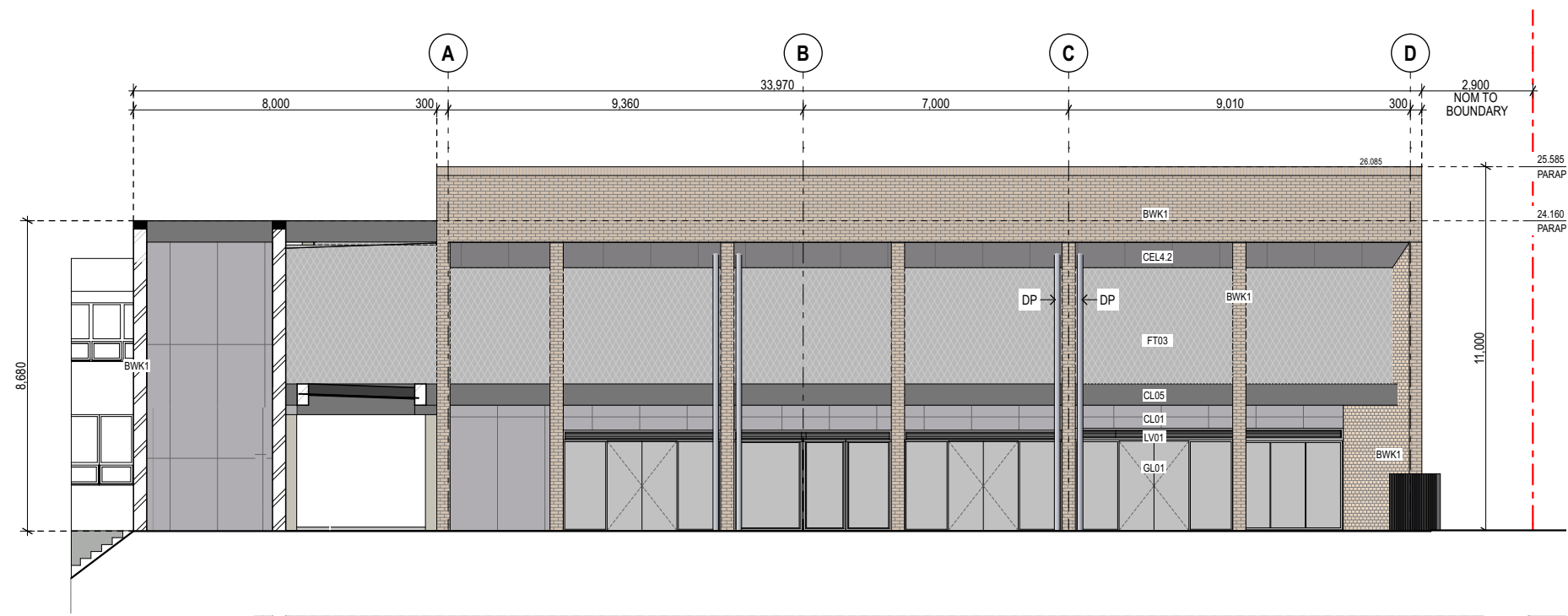
# Materiality and Facades • CAPA

## CAPA North Elevation

The north elevation of CAPA facing the playing fields, the MPC and the PCYC - all public facing facilities which will work in conjunction with the teaching and learning of the CAPA.

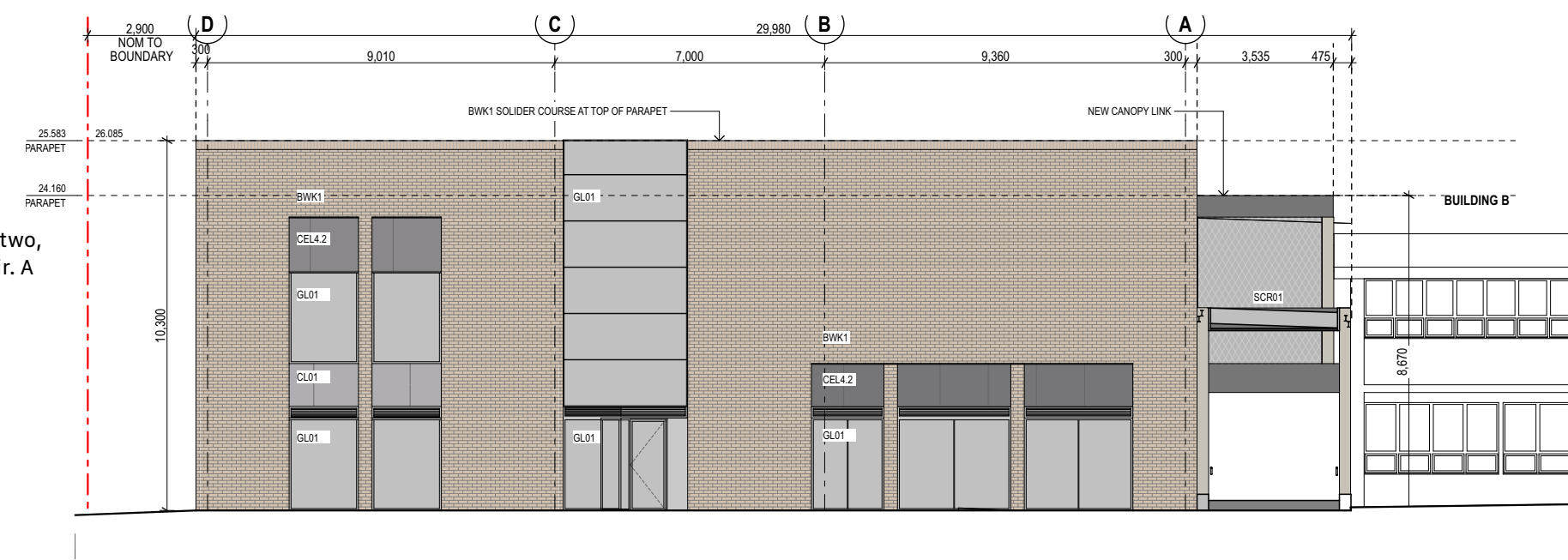
The northern balcony at both Ground and Level 1, will provide a protected location for outdoor learning and its proportions and architectural expression reflect the existing colonnades of Building L and B.

The internal cladding is a combination of integrated colour fibre cement panels, which provide a durable and impact resistant finish and aluminium framed glazing, including double swing doors, which will be able to open back onto the facade.



## CAPA South Elevation

The south elevation of CAPA engages with the internal entrance courtyard. The functionality of each area is reflected on the facade. The elevation is divided into two, separated by a glazed facade, which provides views into the main circulation stair. A timber lined soffit is visible from the courtyard.



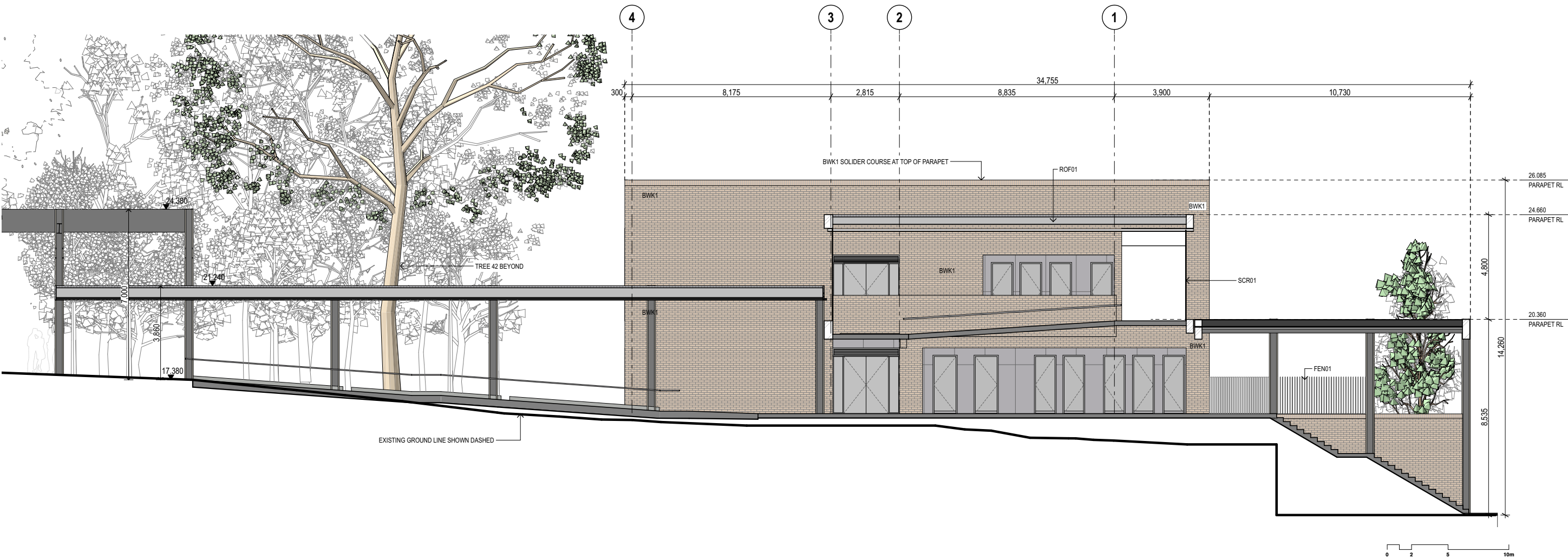
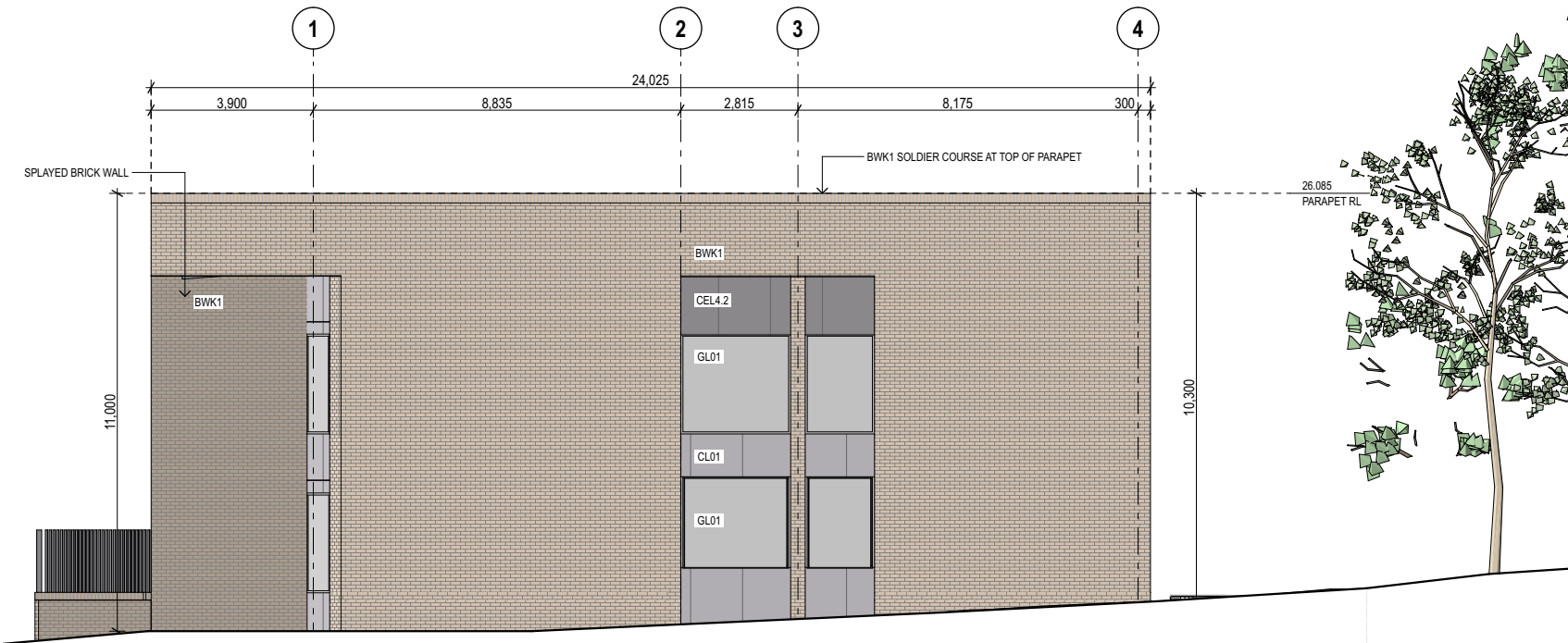
# Materiality and Facades • CAPA

## CAPA West Elevation

The west elevation engages with Owen Street and the concept is to provide a quiet elevation to the street, to focus the attention on the landscape courtyard between. The facade is similar to the existing facades of Building A and B - fields of face brickwork, intersected with glazing.

Here, however, the glazed windows at Ground Level, present an element of surprise. These windows are proposed to be "display boxes", where the student activities undertaken in CAPA can be showcased to the public. These windows act as both a privacy barrier and a light box, providing filtered light to the learning spaces beyond.

The splayed brick wall to the north/west provides plays with the simple geometric forms and "invites" views across the northern elevation.



# Materiality and Facades • Building L

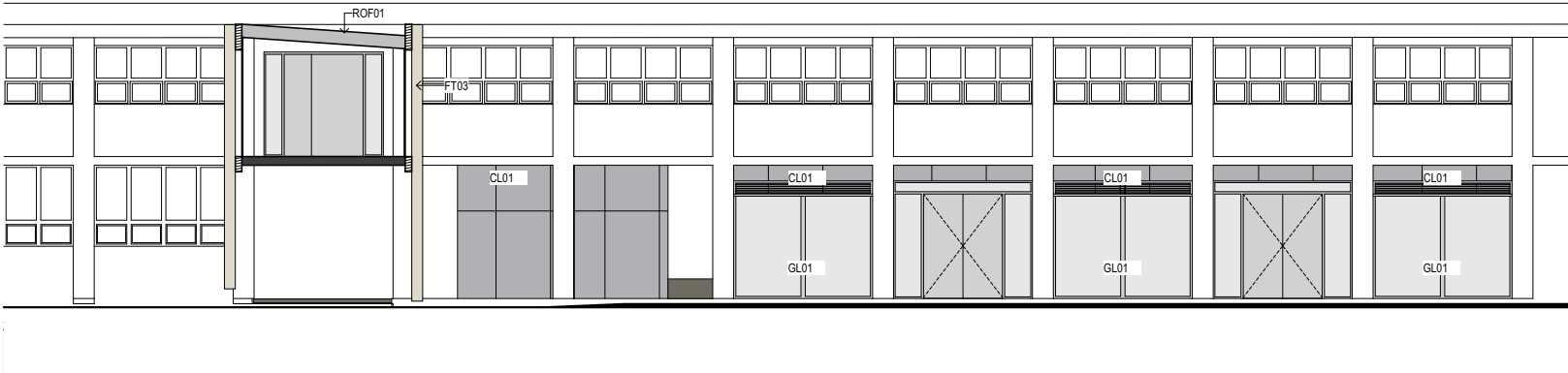
## Building L East

- new full height glazed doors are provided to each GLS to provide a greater connection to the external courts
- new full hight glazed is provided adjacent to each door to increase visibility to the east and the west
- new integrated colour fibre cement sheet cladding to existing amenities



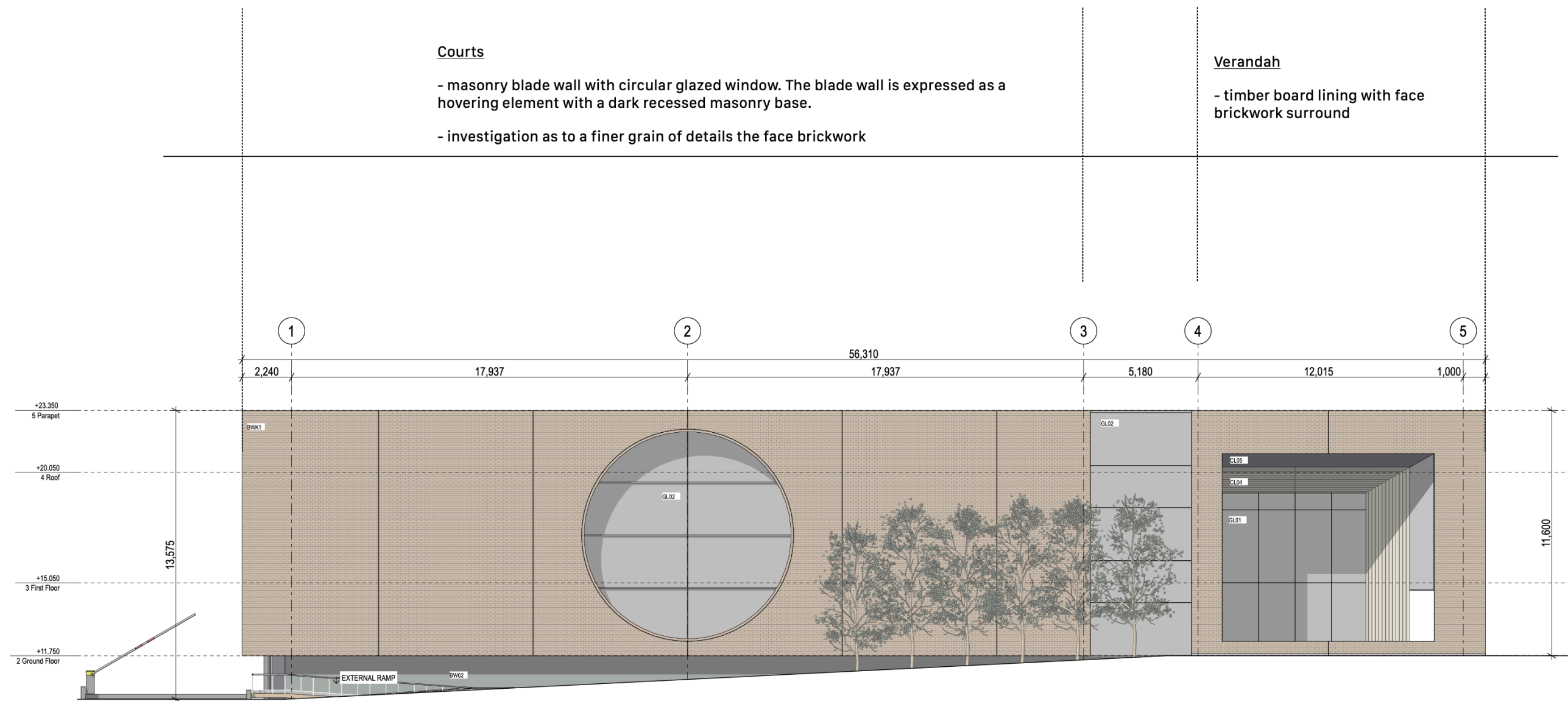
## Building L East

- new full height glazed doors are provided to each GLS to provide a greater connection to the external courts
- new full hight glazed is provided adjacent to each door to increase visibility to the east and the west
- new integrated colour fibre cement sheet cladding to existing amenities



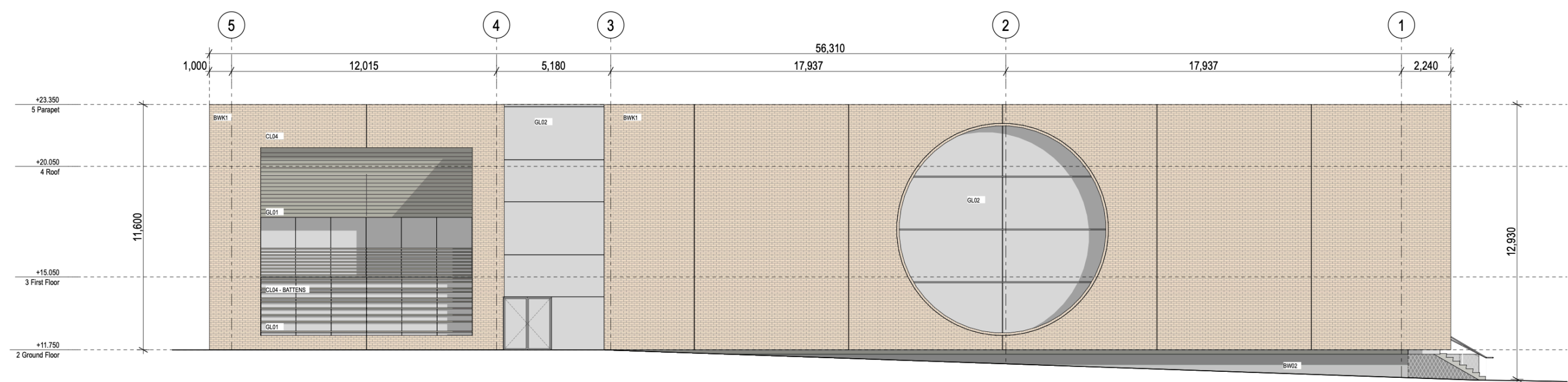
# Materiality and Facades • PCYC

PCYC West Elevation



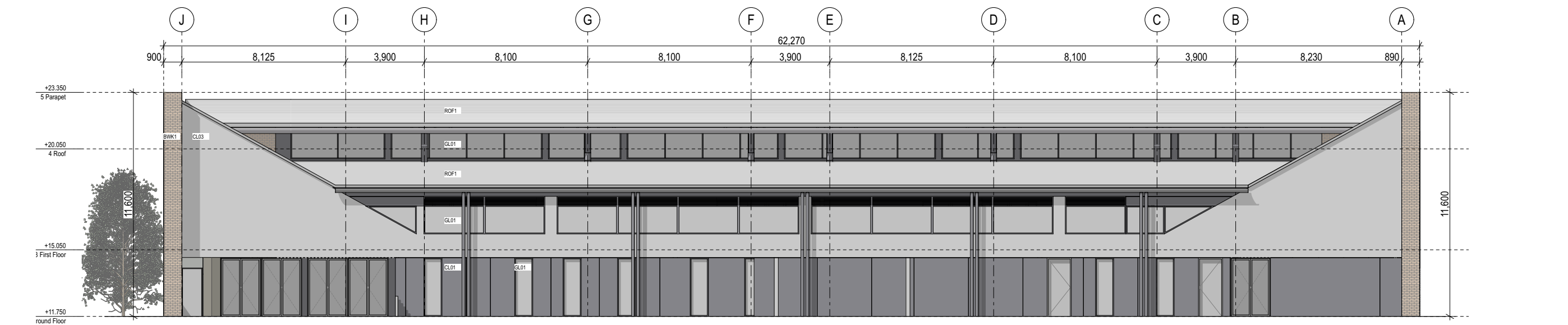
# Materiality and Facades • PCYC

PCYC East Elevation



# Materiality and Facades • PCYC

PCYC South Elevation



# Materiality and Facades • PCYC

PCYC North Elevation

