

Artist impression of the new CAPA building – Port Macquarie Campus

Hastings Secondary College

Project update | December 2021

Investing in our schools

The NSW Government is investing \$7.9 billion over the next four years, continuing its program to deliver 215 new and upgraded schools to support communities across NSW. This is the largest investment in public education infrastructure in the history of NSW. The NSW Department of Education is committed to delivering new and upgraded schools for communities across NSW. The delivery of these important projects is essential to the future learning needs of our students and supports growth in the local economy.

Project overview

We are upgrading Hastings Secondary College to support the student community. Hastings Secondary College comprises of the Port Macquarie Campus (PMC) and Westport Campus (WPC). The upgrade will involve work at both campuses.

The Port Macquarie Campus will deliver new and upgraded learning spaces, new Technological and Applied Studies (TAS) facilities, new Creative and Performing Arts (CAPA) building, a redeveloped school entry and a new shared use multi-sports facility in partnership with Police Citizens Youth Clubs (PCYC) NSW.

The Westport Campus will deliver relocated and upgraded administration office, new flexible learning spaces and a redeveloped school entry.

Progress update

The State Significant Development (SSD) application for Stages 2 and 3 of the PMC upgrade has been approved by the Department of Planning, Industry and Environment (DPIE). The Conditions of Approval can be found on the DPIE major projects website: www.planningportal.nsw.gov.au/major-projects/project/40801.

School Infrastructure NSW has now obtained all the necessary planning consents for the Hastings Secondary College upgrade.

In consultation with the school, the scope of the refurbishment works for Port Macquarie Campus Stage 2 have changed. Refurbishment works on the top level of Block B will deliver 5 support unit general learning spaces with

For more information contact:

School Infrastructure NSW
Email: schoolinfrastructure@det.nsw.edu.au
Phone: 1300 482 651
www.schoolinfrastructure.nsw.gov.au

amenities. Refurbishment of Block L will deliver two flexible learning spaces, staff facility and toilet upgrades. This allows the school to accommodate a greater number of specialist support classes using new facilities, grouped as a faculty in the heart of the school.

Works on Stage 1 at Port Macquarie Campus have continued, with the new TAS building ground slab, remediation of building T and main earthworks now finished.

Next steps

- Continue works on Stage 1 at Port Macquarie Campus with structural steel, roof installation and the laying of brickwork for the new TAS building, and roof replacement for building T.
- Relocate a demountable classroom from the school entrance at Port Macquarie Campus.
- Establish the construction compound for Stage 2 at Port Macquarie Campus and start demolition works.
- Establish the Westport Campus construction site and start Stage 1 works with internal stripping of Block L.

Port Macquarie Campus Stage 2 site establishment

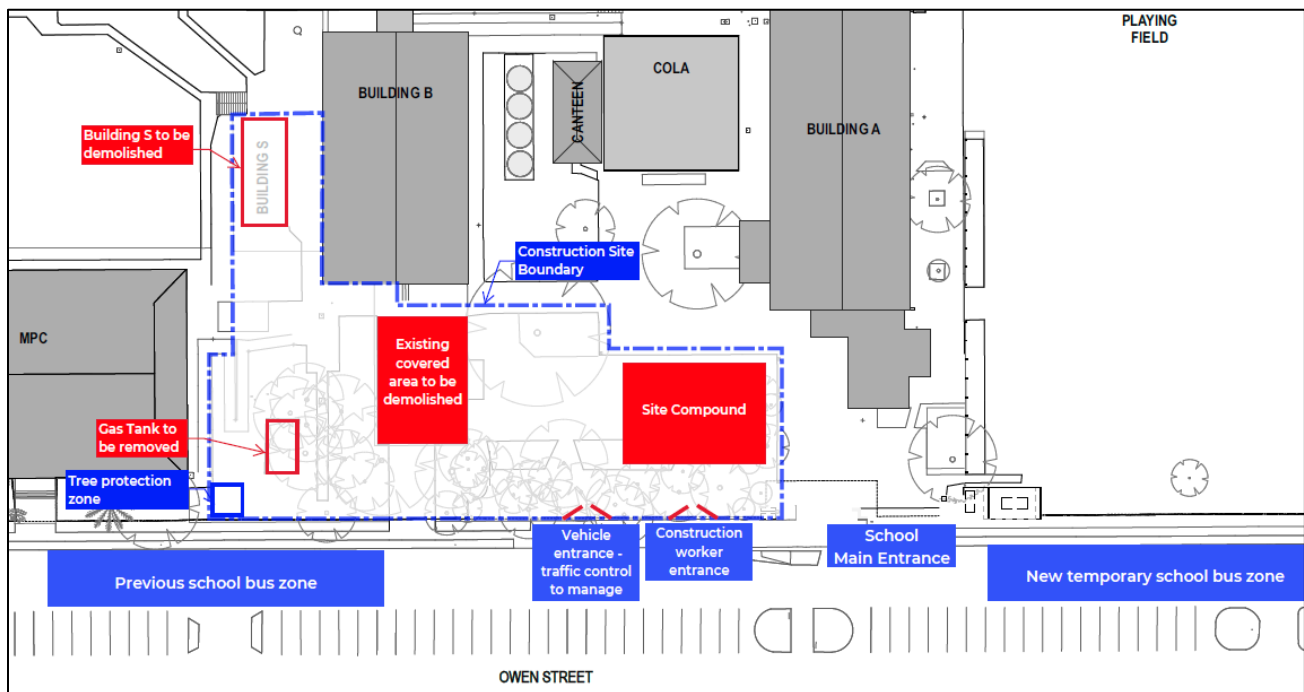
In early 2022 works will start on Stage 2 of the upgrade at Port Macquarie Campus. Works are expected to start in mid-January and the community will be notified prior to demolition starting.

The establishment of the Stage 2 site construction compound requires relocating the demountable adjacent to the entry of the Campus. This will be positioned alongside the existing demountable buildings on the south side of the campus.

The Stage 2 construction site will have a separate site entry to the Stage 1 compound. A new temporary driveway and construction zone will be installed on Owen Street to allow access to site. All deliveries and pedestrian management will be managed by an accredited traffic controller. All major concrete pours and crane activities will be managed with additional traffic control in place.

The construction site will be inaccessible to students and staff. There are no changes to student drop off and pick up arrangements, however the bus bay will move to south of the main entry.

Map of PMC Stage 2 construction site



For more information contact:

School Infrastructure NSW
Email: schoolinfrastructure@det.nsw.edu.au
Phone: 1300 482 651
www.schoolinfrastructure.nsw.gov.au

Westport Campus site establishment: change to school entry for Term 1 2022

In early 2022 works will start on Stage 1 of the Westport Campus upgrade. Stage 1 includes refurbishing Block L into administration spaces.

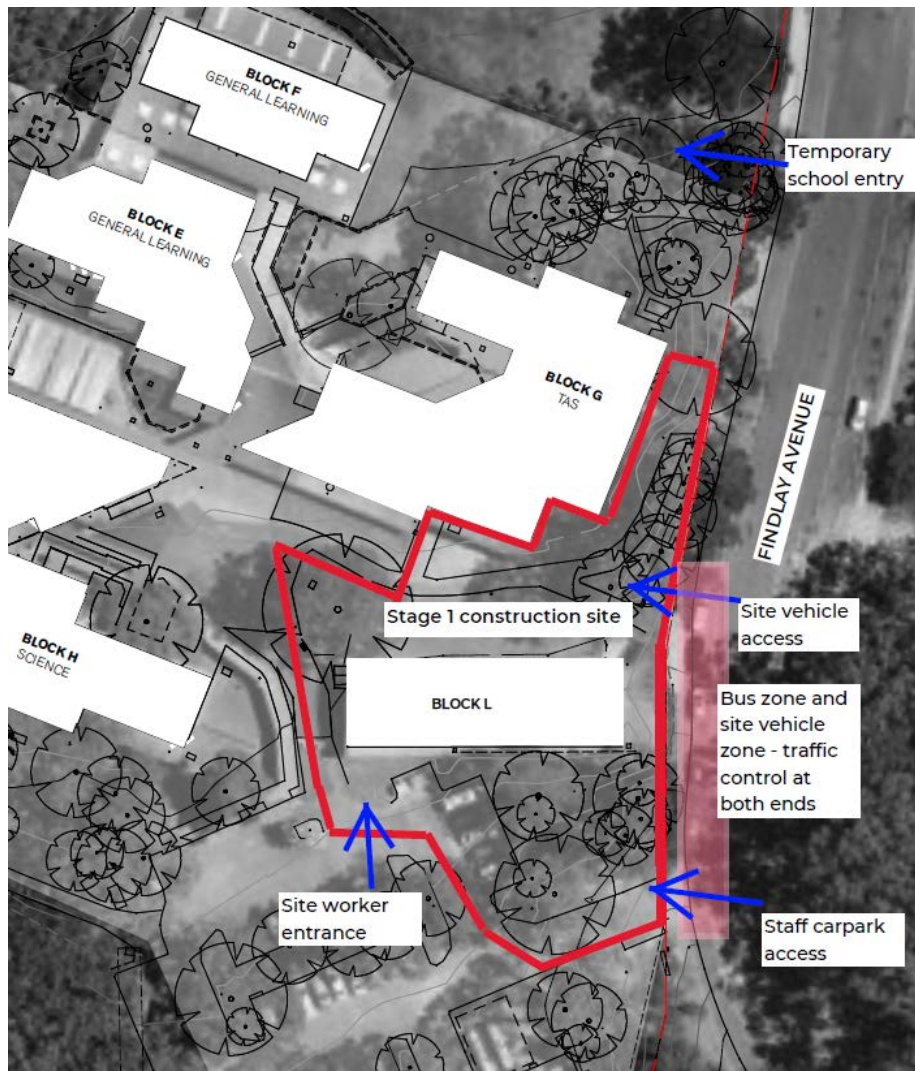
The location of the construction site requires relocating the main school entrance 20 metres along Findlay Avenue. From Day 1 Term 1 2022, all staff and students will need to use this temporary access gate to enter the school. There are no changes to the main office or to student drop off and pick up arrangements.

The school flag poles will be relocated to the front of Block H.

From Monday 10 January 2022, site sheds and temporary fencing will be installed. Site sheds will be delivered by flat bed and tilt tray trucks from Findlay Avenue and unloaded with either a truck mounted crane or tilt tray trucks. Traffic control measures will be in place for the site shed delivery. Traffic management will be in place to safely direct traffic and pedestrians.

See map below for the site compound area. Once set up, services (water and electricity) will then be connected to site sheds.

Map of WPC Stage 1 construction site



For more information contact:

School Infrastructure NSW
Email: schoolinfrastructure@det.nsw.edu.au
Phone: 1300 482 651
www.schoolinfrastructure.nsw.gov.au

Frequently asked questions

Will construction take place over Christmas and New Year?

The construction site will be closed between Wednesday 22 December 2021 and Monday 3 January 2022 inclusive.

Upon restart on Tuesday 4 January, hours of work will be:

- Port Macquarie Campus: 7 am to 7 pm, Monday to Friday and 8 am to 4 pm on Saturdays
- Westport Campus: 7 am to 6 pm Monday to Saturday.

No works will take place on Sundays or public holidays at either campus.

Who can I contact if I have a concern about construction work over the holidays?

If you have any queries or concerns about this project you can contact School Infrastructure NSW during business hours on 1300 482 651. School Infrastructure NSW will be closed from Monday 27 December 2021 to Friday 7 January 2022 inclusive.

For any urgent queries or concerns about construction during this period, please contact our builder via the site manager's contact details on the main construction gate signage. In an emergency, call triple zero (000).

Thank you for your patience while we deliver this important school infrastructure.

For more information contact:

School Infrastructure NSW
Email: schoolinfrastructure@det.nsw.edu.au
Phone: 1300 482 651
www.schoolinfrastructure.nsw.gov.au