

# Project overview

## Project summary

The Hastings Secondary College upgrade received approval to proceed in mid 2020, and the concept designs have been developed.

Key consultants including the architect and project managers are developing the concept design through to schematic and detailed design phases. These designs will be developed in consultation with the Hastings Secondary College Project Reference Group.

The project team has released a tender for early works for the Port Macquarie Campus which includes site establishment and demolition as well as a tender for the main construction works across both campuses.

As part of the State Significant Development (SSD) application for stage 2 and 3 of the upgrade at the Port Macquarie Campus, a Secretary’s Environmental Assessment Requirements (SEARs) request has been lodged with the Department of Planning, Industry and Environment (DPIE).

## Next steps

- Installation of temporary demountable units on the sports oval on the corner of Burrawan and Owen Streets.
- Early works and site establishment.
- Demolition of Technology and Applied Science (TAS) and C buildings, and internal demolition of building T.

## Indicative timeline



## Hastings Secondary College

For more information phone: 1300 482 651  
Email: [schoolinfrastructure@det.nsw.edu.au](mailto:schoolinfrastructure@det.nsw.edu.au)



# Port Macquarie Campus

We are upgrading Hastings Secondary College to support the student community.

Hastings Secondary College comprises of the Port Macquarie Campus (PMC) and Westport Campus (WPC). The upgrade will involve work at both campuses.

## Port Macquarie Campus features



14 new or upgraded innovative learning spaces



3 supported learning spaces



New Technological and Applied Studies facilities



New Creative and Performing Arts building



New shared use multi sports facility



Increase student accessibility with 3 lifts installed



Redeveloped school entry



Artist impression of the new Port Macquarie Campus concept design



Artist impression of the new Port Macquarie Campus building



Artist impression of the new Port Macquarie Campus school entrance

## Hastings Secondary College

For more information phone: 1300 482 651  
Email: [schoolinfrastructure@det.nsw.edu.au](mailto:schoolinfrastructure@det.nsw.edu.au)



# Port Macquarie Campus

The upgrade to Hastings Secondary College will be staged to ensure the school remains operational during construction and to minimise disruption to learning.

## Indicative staging:

### Stage 1 – from late 2020 pending planning approvals

#### Planning pathway: Complying Development Certificate

- Construction of new TAS building and upgrade of building T, pending planning approvals.

### Stage 2

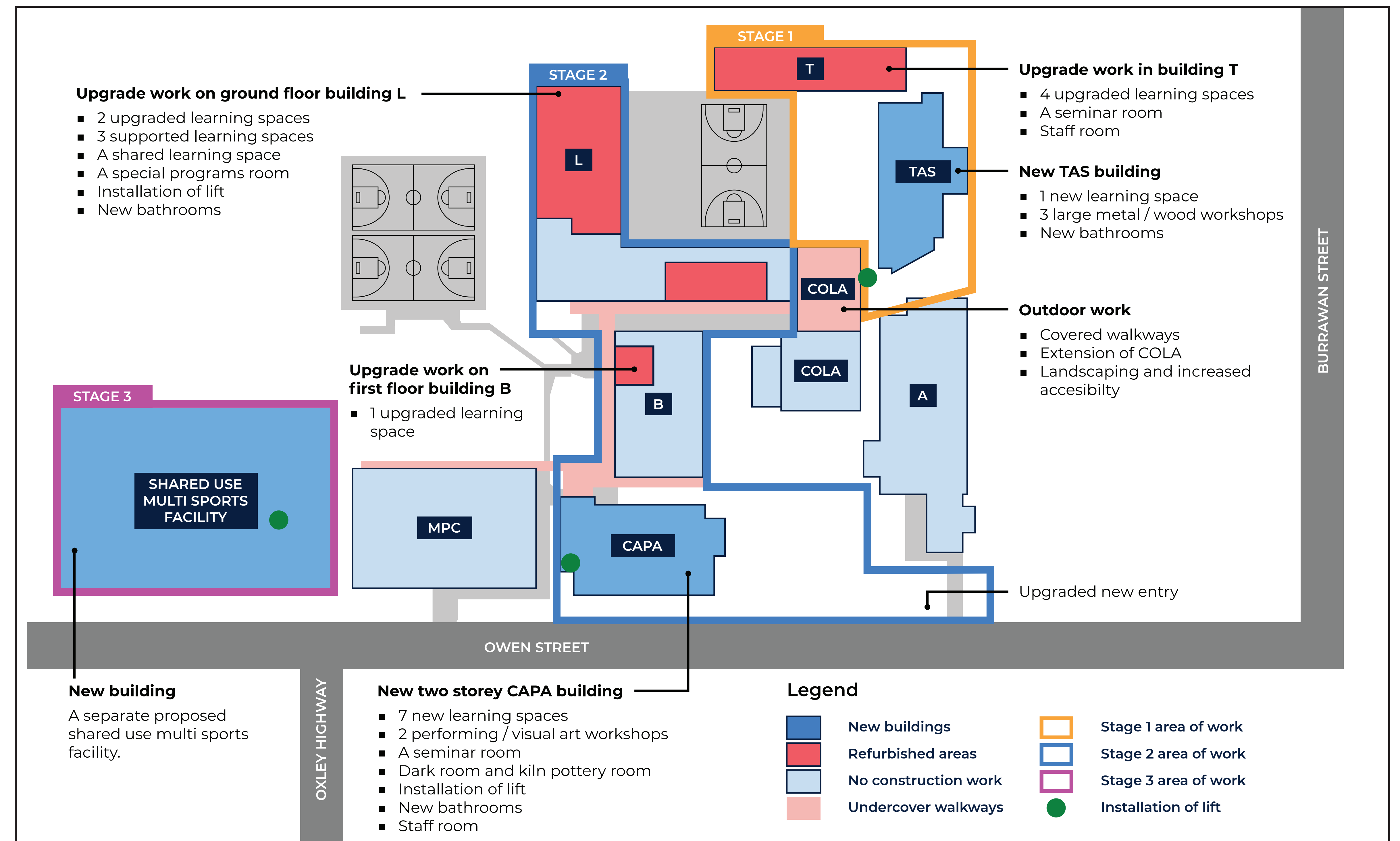
#### Planning pathway: State Significant Development (SSD)

- Alterations and additions to buildings L and B.
- New front entrance.
- Construction of the new two storey CAPA building.

### Stage 3

#### Planning pathway: State Significant Development (SSD)

- A separate proposal has been submitted for a multi sports shared use facility. More details will be shared when available.



## Hastings Secondary College

For more information phone: 1300 482 651  
Email: schoolinfrastructure@det.nsw.edu.au



# Westport Campus

We are upgrading Hastings Secondary College to support the student community.

Hastings Secondary College comprises of the Port Macquarie Campus (PMC) and Westport Campus (WPC). The upgrade will involve work at both campuses.

This upgrade will enhance the educational delivery, streamline and strengthen transition and pathway options for students and their community and provide the latest innovative teaching facilities across both campuses.

A separate proposal also includes a shared use multi sports facility which is being developed at the Port Macquarie campus in partnership with the Police Community Youth Centre (PCYC).

## Westport Campus features



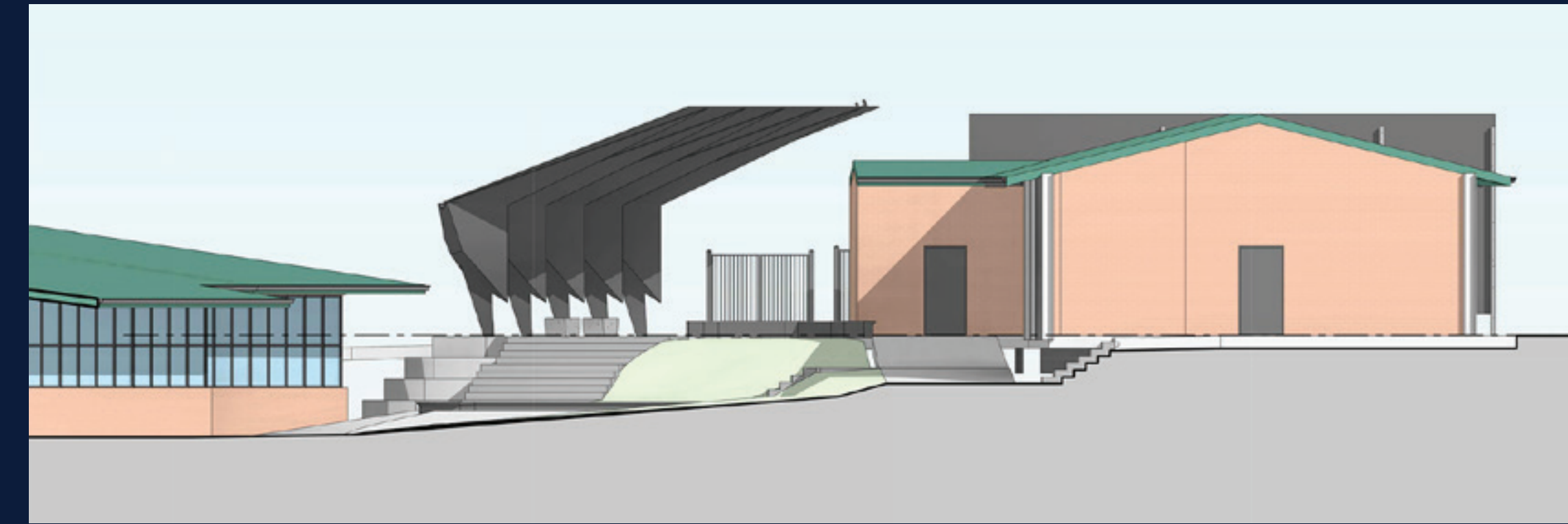
Relocate and upgrade  
administration office



3 innovative flexible  
learning spaces



Redeveloped  
school entry



Building L – west elevation



Building L – east elevation



Artist impression of the Westport Campus school entrance

## Hastings Secondary College

For more information phone: 1300 482 651  
Email: [schoolinfrastructure@det.nsw.edu.au](mailto:schoolinfrastructure@det.nsw.edu.au)



# Westport Campus

The upgrade to Hastings Secondary College will be staged to ensure the school remains operational during construction and to minimise disruption to learning.

**Indicative staging:**

**Stage 1 – from late 2021 pending planning approvals**

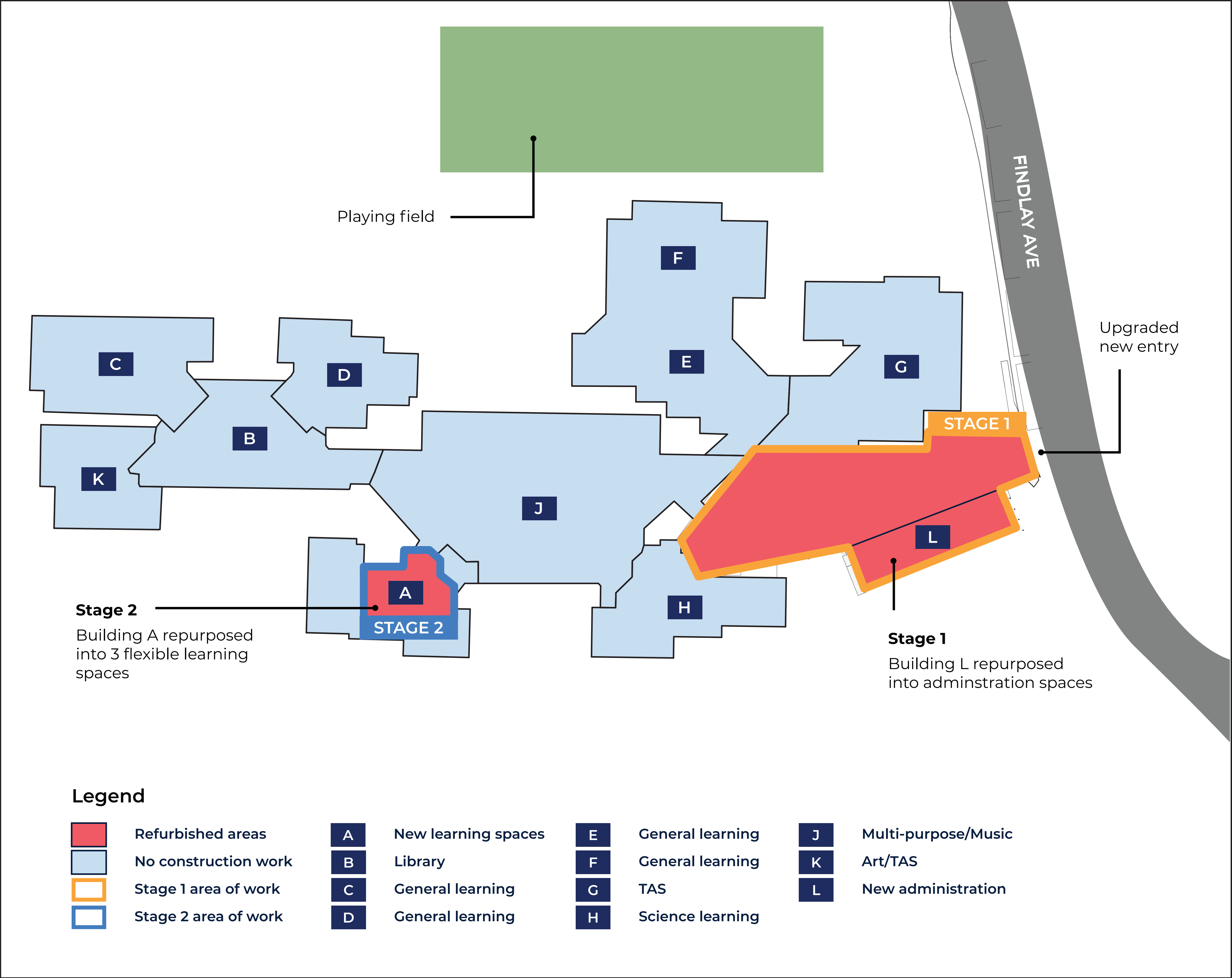
**Planning pathway: Development application**

- Relocation of administration office.
- New front entrance.

**Stage 2**

**Planning pathway: Development application**

- Refurbishment of building A into new flexible learning spaces.



## Hastings Secondary College

For more information phone: 1300 482 651  
Email: schoolinfrastructure@det.nsw.edu.au



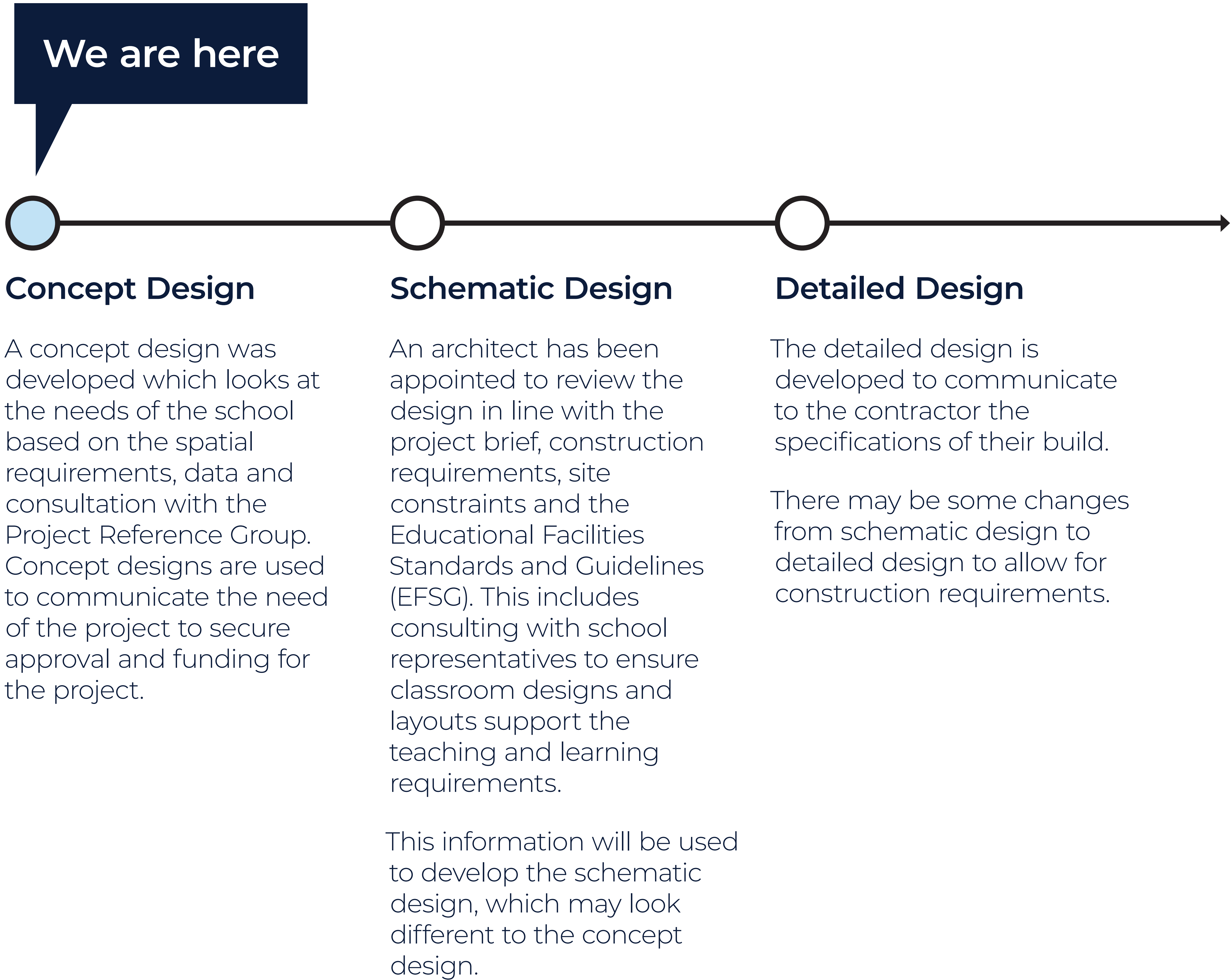
# Design Process

The scope of work and design for the Hastings Secondary College upgrade was developed based on a range of factors including assessment of population and enrolment data, school requirements, current trends in education and learning, existing infrastructure, available funding, as well as the size and physical constraints of the school site.

Workshops were held with key stakeholders to understand current challenges and constraints and identify future requirements.

The project has finalised the concept design. Details may be subject to change as we progress with site investigations, planning approvals and into schematic and detailed designs.

There are three stages of design for school upgrades, as this project is being delivered in stages. The first schematic design for the Stage 1 Port Macquarie Campus are expected in early 2021.





# Project opportunities

This project offers a range of exciting opportunities and benefits for students and the Hastings community.

## Exceptional education

The upgrades provide an opportunity to create an exceptional, collaborative, creative and inclusive learning environment which meets the educational and social needs of students now and into the future.



## New facilities

Upgrades to the campuses will allow us to design and build new sporting, performing arts, specialist learning and school support unit facilities in consultation with staff.



## Community building

Potential shared use of the proposed multi sports facility will put the campus at the heart of the community and deliver a range of social benefits for Hastings.



## Hastings Secondary College

For more information phone: 1300 482 651  
Email: [schoolinfrastructure@det.nsw.edu.au](mailto:schoolinfrastructure@det.nsw.edu.au)



# Contemporary high school learning spaces

These are some examples of contemporary learning environments we have provided for high school aged students across NSW.



## Hastings Secondary College

For more information phone: 1300 482 651  
Email: [schoolinfrastructure@det.nsw.edu.au](mailto:schoolinfrastructure@det.nsw.edu.au)



# Specialist learning spaces

These are some examples of contemporary specialist learning environments we have provided for students across NSW.



## Hastings Secondary College

For more information phone: 1300 482 651  
Email: [schoolinfrastructure@det.nsw.edu.au](mailto:schoolinfrastructure@det.nsw.edu.au)