

Hastings Secondary College

Information pack

November 2020



Artist impression of the Port Macquarie Campus concept design

The NSW Government is investing \$6.7 billion over four years to deliver more than 190 new and upgraded schools to support communities across NSW. This is the largest investment in public education infrastructure in the history of NSW.

The NSW Department of Education is committed to delivering new and upgraded schools for communities across NSW. The delivery of these important projects is essential to the future learning needs of our students and supports growth in the local economy.

Change to information sessions

School Infrastructure NSW is committed to keeping the Hastings Secondary College and local community informed about this important project.

We are temporarily changing some of the ways we communicate to account for social distancing measures. Until further notice we are sharing information online instead of in person.

About this information pack

This pack provides an update on the latest plans and designs for the Hastings Secondary College upgrade.

In this document you will find an overview of:

- the proposed site layout
- building designs and elevations
- how you can provide feedback
- how to contact us for more information.

Project overview

We are upgrading Hastings Secondary College to support the student community.

Hastings Secondary College comprises of the Port Macquarie Campus (PMC) and Westport Campus (WPC) the upgrade will involve work at both campuses.

This upgrade will enhance both campuses educational delivery , streamline and strengthen transition and pathway options for students and their community and provide the latest innovative teaching facilities.

A separate proposal also includes a shared use multi sports facility which is being developed at the Port Macquarie campus in partnership with the PCYC.

Port Macquarie Campus



14 new or upgraded innovative learning spaces



3 supported learning spaces



New Technological and Applied Studies facilities



New Creative and Performing Arts building



New shared use multi sports facility



Increase student accessibility with 3 lifts installed



Redeveloped school entry

Westport Campus



Relocate and upgrade administration office



3 innovative flexible learning spaces



Redeveloped school entry

Project summary

The Hastings Secondary College upgrade received approval to proceed in mid 2020, and the concept designs have been developed.

Key consultants including the architect and project managers were engaged in September 2020 to develop the concept design through to schematic and detailed design phases. These designs will be developed in consultation with the Hastings Secondary College Project Reference Group.

The project team has released a tender for early works for the Port Macquarie Campus which includes site establishment and demolition as well as a tender for the main construction works across both campuses. This contractor will be assisting in obtaining relevant planning approvals.

Indicative timeline



Next steps

- To continue to develop the design, submit relevant planning approvals and award the tenders for construction works. .
- Prepare and submit planning pathways for works at each campus. The Port Macquarie Campus will require a Complying Development Certificate (CDC) and a State Significant Development (SSD) application. The Westport Campus will require a Development Application (DA).
- Pending planning approval, site establishment and demolition early works at the Port Macquarie Campus are expected to start during the upcoming school holidays. Building C and the Technological and Applied Science (TAS) building will be demolished as part of early works along with internal demolition of building T.
- Construction of the new TAS and refurbishment of building T will commence once demolition is completed.
- All other construction works will commence once planning approvals have been received in 2021.

Background

Hastings Secondary College has a rich history providing education to the local community, and with a growing reputation for educational excellence and providing innovative programs and partnerships with the Port Macquarie Hastings Community.

The Hastings Secondary College provides many opportunities to students across two campuses in Port Macquarie. The Westport Campus and Port Macquarie Campus offer an extensive and high quality curriculum. Students at Hastings Secondary College excel in creative and performing arts, sport, community volunteering, leadership and academic extension.

The upgrade to Hasting Secondary College has been highly anticipated and welcomed by the community and will ensure that Hastings Secondary College can continue to deliver excellent education.

The purpose of the upgrade to Hastings Secondary College is to address future enrolment growth, provide modern learning spaces, and to provide additional facilities to cater for the current curriculum.

Design process

The scope of work and design for the Hastings Secondary College upgrade was developed based on a range of factors including assessment of population and enrolment data, school requirements, current trends in education and learning, existing infrastructure, available funding, as well as the size and physical constraints of the school site.

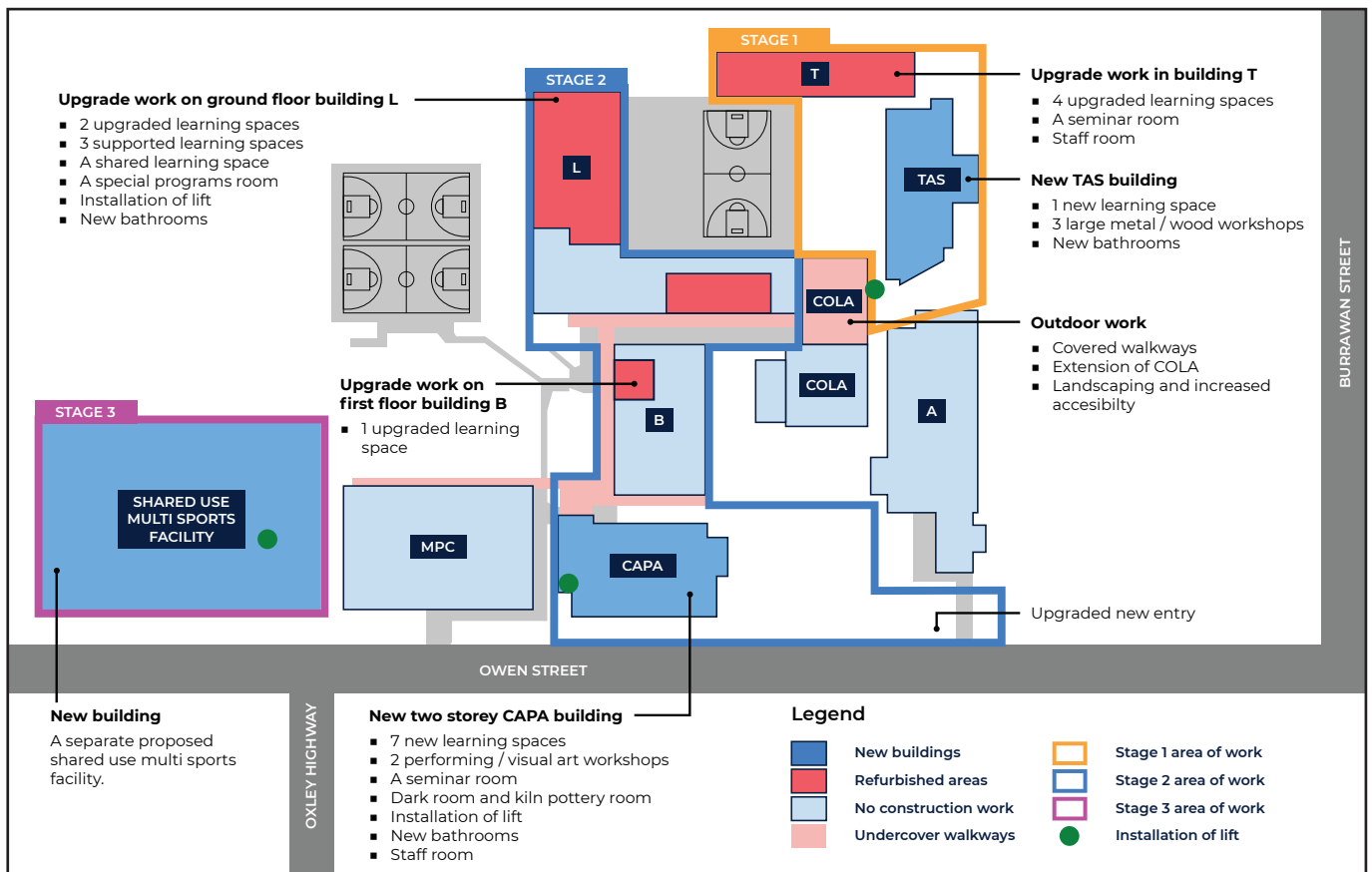
Workshops were held with key stakeholders to understand current challenges and constraints and identify future requirements.

This information pack presents the concept design. Details may be subject to change as we progress with site investigations, planning approvals and into schematic and detailed designs.

Port Macquarie Campus upgrade

The project will provide Port Macquarie campus with:

- a new two storey building for Creative and Performing Arts (CAPA) facilities
- an expansion of the Technology and Applied Science (TAS) facilities including a new building, and upgrade to building T
- 14 new or upgraded innovative learning spaces
- upgrade of learning spaces in buildings B and L, including 3 supported learning spaces
- large workshops, seminar learning spaces and staff rooms
- increased accessibility throughout the school including installation of lifts
- new front entrance
- new undercover walkways, extension of Covered Outdoor Learning Area (COLA) and landscaping
- a new shared use multi sports facility.



Port Macquarie Campus - indicative staging

Stage 1 - from late 2020 pending planning approval

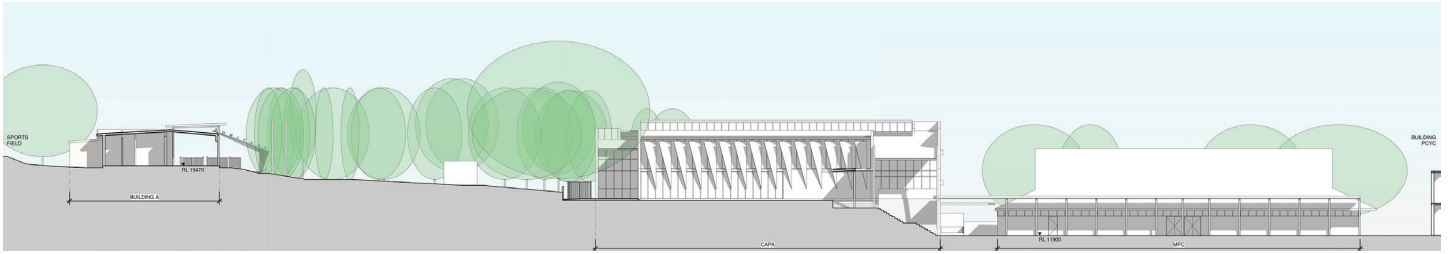
- Early works and site establishment
- Demolition of TAS and C buildings and internal demolition of building T
- Construction of new TAS building and upgrade of Building T, pending planning approvals

Stage 2

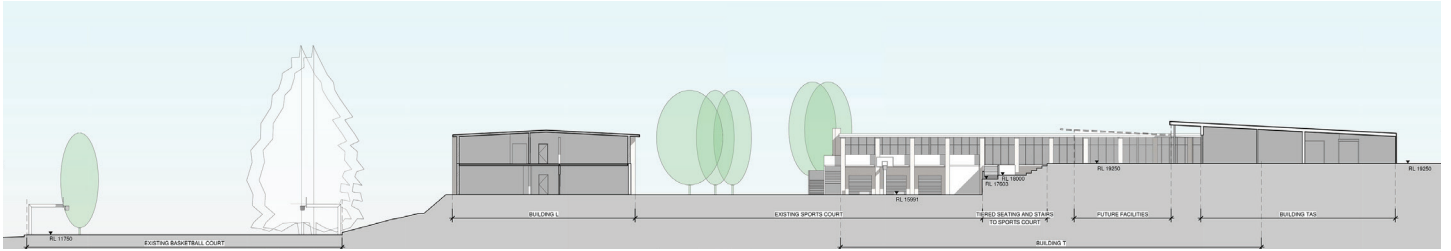
- Alterations and additions to buildings L and B
- New front entrance
- Construction of the new two storey CAPA building

Stage 3

- A separate proposal has been submitted for a multi sports shared use facility. More details will be available soon.



Site section – buildings A entry and CAPA



Site section – buildings L and TAS



Artist impression of the new Port Macquarie campus CAPA building

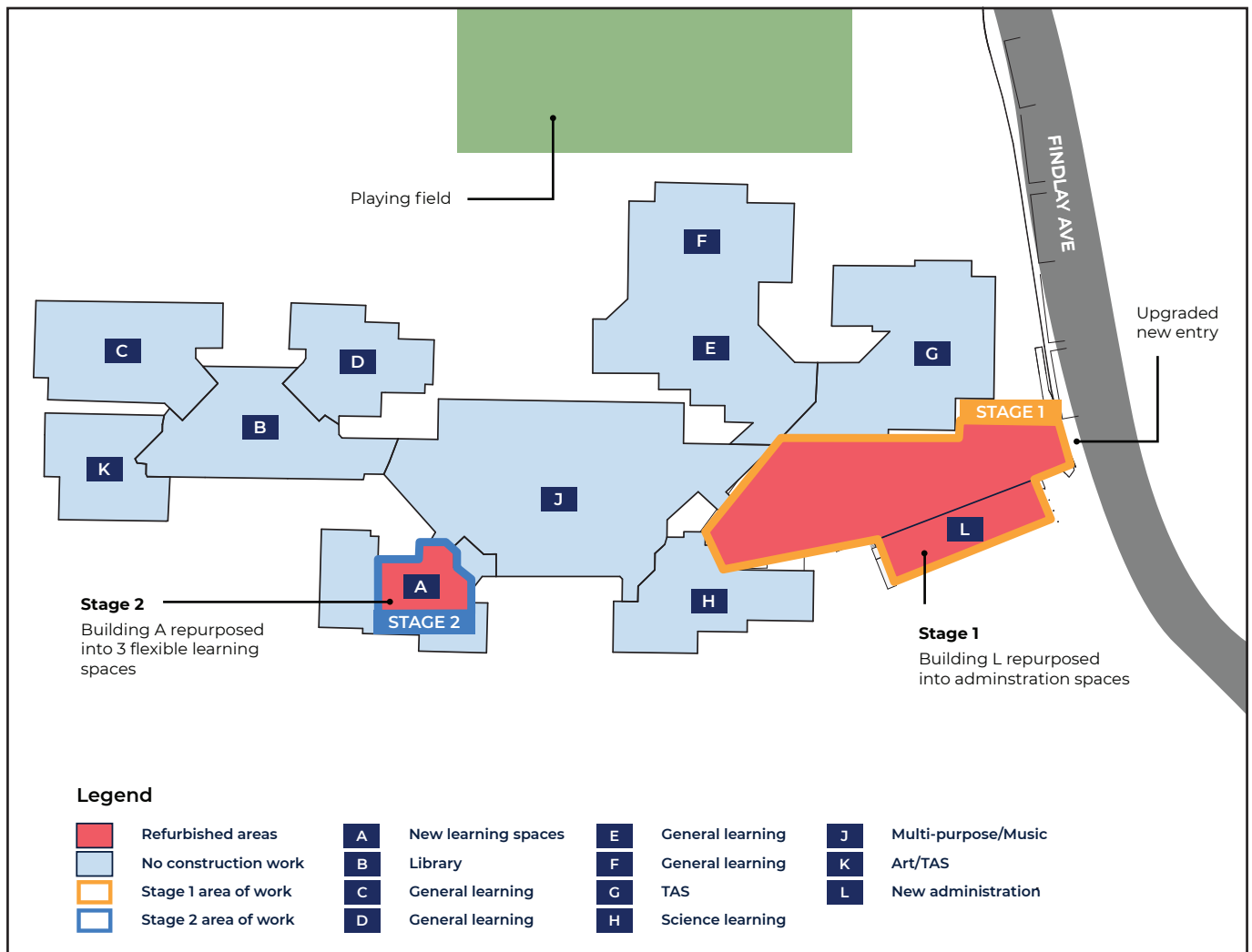


Artist impression of the new Port Macquarie campus school entrance

Westport Campus upgrade

The project will deliver at Westport Campus:

- relocation of campus administration centre
- new front entrance
- reconfiguration of existing administration spaces into innovative and flexible learning spaces.



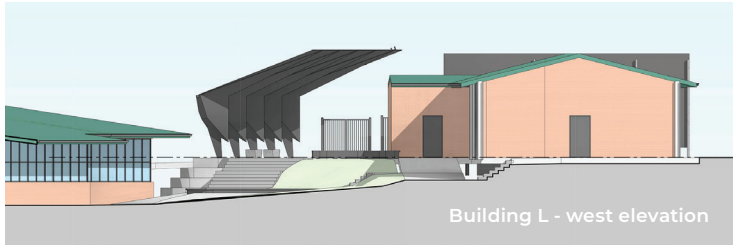
Westport Campus - indicative staging

Stage 1 - from late 2021 pending planning approvals

- Relocation of administration office
- New front entrance

Stage 2

- Refurbishment of building A into new flexible learning spaces.



Building L - west elevation



Building L - east elevation



Artist impression of the Westport Campus school entrance

Shared use multi sports facility

A separate proposal for a shared use multi sports facility is being developed at the Port Macquarie Campus in partnership with the PCYC.

The NSW Department of Education works closely with local Councils and other agencies to deliver infrastructure solutions that benefit both schools and local communities. Public schools are central to NSW communities, the facilities we deliver support our students, parents and staff, and play an important role in shaping an area's culture, environment and local economy.

The department is working with partner organisations such as, councils and the PCYC to provide modern facilities such a halls, libraries and sporting fields that can be shared with the wider community outside of school hours.

Community partnerships can increase the investment available to design and build facilities and also increases the use of those facilities.

The department is continuing to work with the PCYC on the development of the separate proposal including developing concept designs.

It is expected this will be delivered as part of the school project, subject to funding and planning approvals. We will provide an update when further information is available.

Construction management

The NSW Department of Education will provide regular updates during construction to keep you informed of upcoming works and potential construction impacts. A construction environmental management plan will be developed to consider impacts to neighbours of the project.

Impact to students

The upgrade to Hastings Secondary College will be staged to ensure the school remains operational during construction and to minimise disruption to learning.

Early works at the Hastings Secondary College Port Macquarie Campus are set to commence in late 2020, with demolition of the building C and TAS and internal demolition of building T.

The project team and Hastings Secondary College is developing a plan and timetable to minimise disruption to students, staff and parents. More information will be provided when available.

Frequently asked questions

How long will the project take?

Early works are commencing in late 2020 and is forecast for completion in late 2022.

How will the partnership between the NSW Department of Education and the PCYC work?

The shared use multi sports facility is a separate proposal. It will be a partnership project between NSW Department of Education and the PCYC.

When completed the new facilities are to be shared between the school community, the PCYC and the wider community.

It is intended that both parties will sign a legally binding project deed covering the management structures, financial and legal arrangements, design and construction considerations, and governance of the shared use facility.

How is this project being funded?

Approval and funding for the Hastings Secondary College upgrade project is funded by the NSW Government.

The shared use multi sport facility is subject to separate funding as it is a partnership with the PCYC.

Has funding been increased or reduced for the project?

The funding allocation for the school upgrade project is separate to the shared use multi sports facility and has not changed.

Will the upgrade be staged?

Yes, the upgrade to Hastings Secondary College will be staged to ensure the school remains operational during construction and to minimise disruption to learning.

How will construction work impact school operations?

During early works at Port Macquarie Campus, buildings T, C and TAS will be a construction area. We are currently working with the school Principals to develop appropriate plans for Term 1 2021 to ensure students maintain access to educational facilities and minimise disruption during construction works. More information will be shared with the school community when available.

What steps will you take to ensure the safety of the school community?

Health and safety is our highest priority. We are working collaboratively with the school to ensure that construction works will be scheduled and managed to minimise impacts where possible. The construction areas will be fenced and signed, with physical and visual separation of the construction area and neighbouring school grounds. Students and staff will be prohibited from entering the construction site.

How do I get involved?

Your feedback is important to us. School Infrastructure NSW is committed to working with the school and the wider community to deliver the best possible facility.

Throughout the project there will be opportunities to view plans, ask questions and give feedback.

Stay informed



Website

Stay up to date by visiting the School Infrastructure NSW website
schoolinfrastructure.nsw.gov.au



Email

Contact the Community Engagement team by emailing
schoolinfrastructure@det.nsw.edu.au



Phone

Contact us between 9:00am and 5:00pm, Monday to Friday on **1300 482 651**