



HASTINGS SECONDARY COLLEGE – OUT OF HOURS EVENT MANAGEMENT PLAN

Community Use

Prepared for: Schools Infrastructure NSW Level
8, 259 George St
Sydney NSW 2000

Prepared by: RPS Australia Asia Pacific
12 December 2023
Version 0.0

DOCUMENT CONTROL

Document Identification

Document Title: Hastings Secondary College – Out of Hours Event Management Plan
Use: Community Use
Document Date: 12 December 2023

Application Number

Application Number: SSD-11920082

Version History

Version	Effective Date	Author	Reason
0.0	12/12/2023	Evan Burnett	Draft for SINSW Review
1.0	18/03/2024	Brent Oldham	DPHI comments addressed
2.0			
3.0			
4.0			
5.0			
6.0			

Contents

EXECUTIVE SUMMARY	3
INTRODUCTION	3
Project Details	3
Project Description and Activity Summary	5
Key Project Personnel	5
PCYC Operations	6
DEVELOPMENT CONSENT	7
NUMBER OF ATTENDEES, TIME AND DURATION	8
MEASURES TO ENCOURAGE NON-VEHICULAR TRAVEL TO THE SCHOOL AND PROMOTE AND SUPPORT THE USE OF ALTERNATIVE TRAVEL MODES	9
PROTOCOLS FOR LOCKING UP	9
ACOUSTIC MANAGEMENT PLAN.....	10
Aim	10
Surrounding Receivers	10
Actions	11
Monitoring	11
APPENDIX A – SITE PLAN.....	12
APPENDIX B – TRANSPORT ACCESS GUIDE	13
APPENDIX C – PCYC OPERATIONS PLAN	14

EXECUTIVE SUMMARY

This report has been developed by RPS Australia Asia Pacific (RPS AAP) for the Department of Education (DOE), Schools Infrastructure New South Wales (SINSW). The report is in preparation post construction of the upgrade of the Port Macquarie Campus – Hastings Secondary College under SSD-11920082 conditions E1 – E4 of the consent.

This Out of Hours Event Management Plan (OHEMP) is prepared for the upgrade of Port Macquarie Campus – Hastings Secondary College at 16 Owen St, Port Macquarie, NSW 2444. The development is approved under the State Significant Development Application (SSDA) Number SSDA-11920082, which was granted by the NSW Government on 01 December 2021.

Conditions E1 – E4 of the Development Consent relates to the preparation of an OHEMP for the subject development and is inclusive of the PCYC Multi Sports Centre.

INTRODUCTION

Project Details

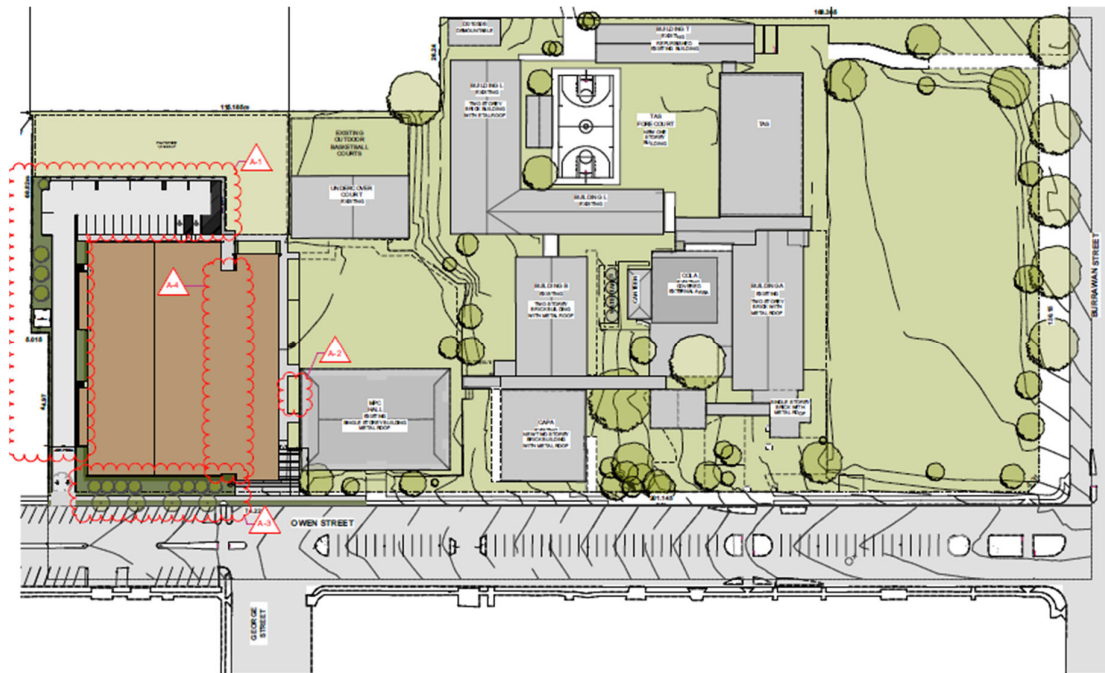
Name	Role
Project Name:	Hastings Secondary College (Phases 7-9)
Project Address:	Port Macquarie Campus 16 Owen St Port Macquarie NSW 2444
Project Application Number:	SSD-11920082

Port Macquarie Campus – Hastings Secondary College is part of the Port Macquarie Hastings Council and located on the corner of Owen Street and Burrawan Street, seen in the below figure (Figure 1).

Figure 1. Port Macquarie Campus – Hastings Secondary College



Figure 2. Port Macquarie Campus – Hastings Secondary College (inclusive of PCYC Facility)



Project Description and Activity Summary

The upgrade of Port Macquarie College – Hastings Secondary College proposes the following activities;

- Demolition works to accommodate new works;
- Upgrade to school entry, including signage;
- Construction of new two-story Creative and Performing Arts (CAPA) building;
- Construction of Police Citizens Youth Club (PCYC);
- Partial refurbishment of Building L;
- Partial refurbishment to Building B;
- Removal of Building S and demountable buildings;
- New lift connections) and covered walkways;
- Associated earthworks, landscaping, stormwater works, service upgrades; and
- Tree removal/tree safety works.

Key Project Personnel

The below table sets out the key personnel involved with the upgrade of the Port Macquarie Campus – Hastings Secondary College (main works) who are responsible for the environmental management of the development.

Name	Role	Company	Email
Geoff Duck	Deputy Principal	DOE	geoffrey.duck@det.nsw.edu.au
Hussein Najdi	Project Director	SINSW	hussein.najdi@det.nsw.edu.au
Alexandra Fearnley	Senior Project Manager	RPS	alexandra.fearnley@rpsgroup.com.au
Trent Sutton	Operations Manager	FKG	trent.sutton@fkg.com.au

The below table sets out the key personnel involved with the upgrade of the Port Macquarie Campus – Hastings Secondary College (PCYC) who are responsible for the environmental management of the development.

Name	Role	Company	Email
Geoff Duck	Deputy Principal	DOE	geoffrey.duck@det.nsw.edu.au
Hussein Najdi	Project Director	SINSW	hussein.najdi@det.nsw.edu.au
Alexandra Fearnley	Senior Project Manager	RPS	alexandra.fearnley@rpsgroup.com.au
Craig McIlveen	Project Manager	AWE	cmcilveen@awedwards.com.au

PCYC Operations

The PCYC Facility (comprising the School Facilities, the PCYC Facilities and the Joint Facilities) is situated on the School Land with the Department being the owner of the School Land.

PCYC may use the PCYC Facilities and the Joint Use Facilities for the purpose of delivering community, sport, recreational, educational, and vocational-focussed activities which may be adapted over time, subject to Department Policies relating to the use of School sites.

The PCYC building's operation hours will align with those approved under Condition E5 of SSD-11920082 MOD 2. The PCYC will operate between 6am to 10pm Monday to Sunday.

DEVELOPMENT CONSENT

This OHEMP for School Use addresses several conditions within the Development Consent issued by the NSW Government, dated 01 December 2021 and revised 04 April 2023 (as per SSD-11920082-2).

These conditions are outlined as follows:

Figure 3. Consent Conditions

Out of Hours Event Management Plan

- E1. Prior to the commencement of the first out of hours events (School Use) run by the school that involve 100 or more people, the Applicant must prepare an Out of Hours Event Management Plan (School Use) in consultation with Council and submit it to Council and the Planning Secretary for information. The plan must include the following:
 - (a) the number of attendees, time and duration;
 - (b) arrival and departure times and modes of transport;
 - (c) where relevant, a schedule of all annual events;
 - (d) measures to encourage non-vehicular travel to the school and promote and support the use of alternate travel modes (i.e. public transport);
 - (e) details of the activity(ies), where applicable, restricting use before 8am and after 10pm;
 - (f) measures to minimise localised traffic and parking impacts; and
 - (g) measures to minimise noise impacts on any sensitive residential receivers, including the preparation of acoustic management plan in compliance with the Noise & Vibration Impact Assessment for SSDA (SSD-119200820) for Hastings Secondary College – Port Macquarie Campus dated 14 May 2021 and prepared by JHA.
- E2. The Out of Hours Event Management Plan (School Use) must be implemented by the Applicant for the duration of the identified events or use.
- E3. Prior to the commencement of out of hours events (Community Use) run by the external parties that involve 100 or more people, the Applicant must prepare an Out of Hours Event Management Plan (Community Use) in consultation with Council and submit it to Council and the Planning Secretary for information. The plan must include the following:
 - (a) the number of attendees, time and duration;
 - (b) arrival and departure times and modes of transport;
 - (c) where relevant, a schedule of all annual events;
 - (d) measures to encourage non-vehicular travel to the school and promote and support the use of alternate travel modes (i.e. public transport);
 - (e) details of the activity(ies) where applicable, restricting use before 8am and after 10pm;
 - (f) measures to minimise localised traffic and parking impacts; and
 - (g) measures to minimise noise impacts on any sensitive residential receivers, including the preparation of acoustic management plan in compliance with the Noise & Vibration Impact Assessment for SSDA (SSD-119200820) for Hastings Secondary College – Port Macquarie Campus dated 14 May 2021 and prepared by JHA.
- E4. The Out of Hours Event Management Plan (Community Use) must be implemented by the Applicant for the duration of the identified community event or use.

NUMBER OF ATTENDEES, TIME AND DURATION

The following schedule of Out of Hours School and PCYC Events has been based on the consultation with PCYC and the School Principal and complies with SSSA conditions E1 – E4. The schedule outlines the number of attendees, time and duration of each event that occurs out of school hours and involves 100 or more people.

In accordance with conditions E1 – E4, no out of hours events are to occur prior to 8.00am and after 10.00pm.

Table 1

Event Description	Occurrence (*dates not yet confirmed)	Number of Attendees	Time	Duration (Hrs and Mins)
School Events				
Point Church Group	Sundays throughout the year (possibly discontinued)	300	Approximately 10am – 2pm	4 hours
Creative & Performing Arts Showcase Evening	Twice per year	350	6pm – 8pm	2 hours
First Lego League Robotics Championship	Once per year	150	9am – 3pm	6 hours
PCYC Events				
N/A				
N/A				

*Note: As no activities that exceed the above criteria are currently scheduled for the PCYC Facility, this table will be updated when such activities become known.

MEASURES TO ENCOURAGE NON-VEHICULAR TRAVEL TO THE SCHOOL AND PROMOTE AND SUPPORT THE USE OF ALTERNATIVE TRAVEL MODES

Port Macquarie Campus – Hastings Secondary College has a small number of staff carparking, while the large majority of the student population resides in close proximity to the campus. The PCYC Facility has a small number of staff carparking, 2 accessible spaces, 2 minibus spaces and 6 Bicycle spaces. Community users are encouraged to walk safely to the facilities. Parking near the School and PCYC during road network peak periods is equally shared with the local residents which would limit available parking during the above events. Drop off/pick up zones are available to support the flow of traffic. Under the Condition D21 of the Hastings Secondary College Port Macquarie Campus Upgrade (SSDA-11920082), the following document has been submitted to the department with a final version currently being completed. The School Travel Plan (STP) outlines measures to promote and support sustainable travel modes to the school. The proposed strategies include promoting walking, cycling, public transport, and carpooling. The PCYC Operations Plan also outlines measures to promote and support sustainable travel modes to the facility. Please refer to attached Appendix C – PCYC Operations Plan.

PROTOCOLS FOR LOCKING UP

For events organised and run by Hastings Secondary College, school staff will be responsible for afterhours lock up in accordance with normal school procedures.

For events run by external or community groups, specific arrangements will be made with the event organiser with regards to after hours lock up. This will be as per Department of Education Community User Agreements.

ACOUSTIC MANAGEMENT PLAN

This Acoustic Management Plan has been prepared in Compliance with the Noise & Vibration Impact Assessment for SSDA (SSD-119200820) for Hastings Secondary College - Port Macquarie Campus, dated 14 May 2021, to address Conditions E1 – E4 and is inclusive of measures to minimise noise impacts on any sensitive residential receivers, including the preparation of the acoustic management plan. This section has been prepared by RPS, in consultation with the School.

Aim

The actions and tasks identified in this section of the report will seek to minimise the acoustic effect of events on the surrounding residential area adjacent to the Hastings Secondary College Port Macquarie Campus. The actions identified have been agreed in consultation with the school.

Surrounding Receivers

The Noise & Vibration Impact Assessment for SSDA (SSD-119200820) for Hastings Secondary College - Port Macquarie Campus presented a summary of the nearest noise sensitive receivers surrounding the site, as shown below in Figure 4.

Figure 4

<i>ID</i>	<i>Sensitive Receiver</i>	<i>Receiver Type</i>	<i>Distance (m)</i>
1	Port City Bowling Club	Active Recreational	6
2	Oxley Oval	Active Recreational	50
3	28 Burrawan Street	Medium Residential (R3)	140
4	29 Owen Street	General Residential (R1)	30
5	1 Gordon Street	Medium Residential (R3)	30

Figure 5 shows the location of the Hastings Secondary College site and the nearest noise sensitive receivers as described in table above.

Figure 5



Actions

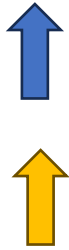
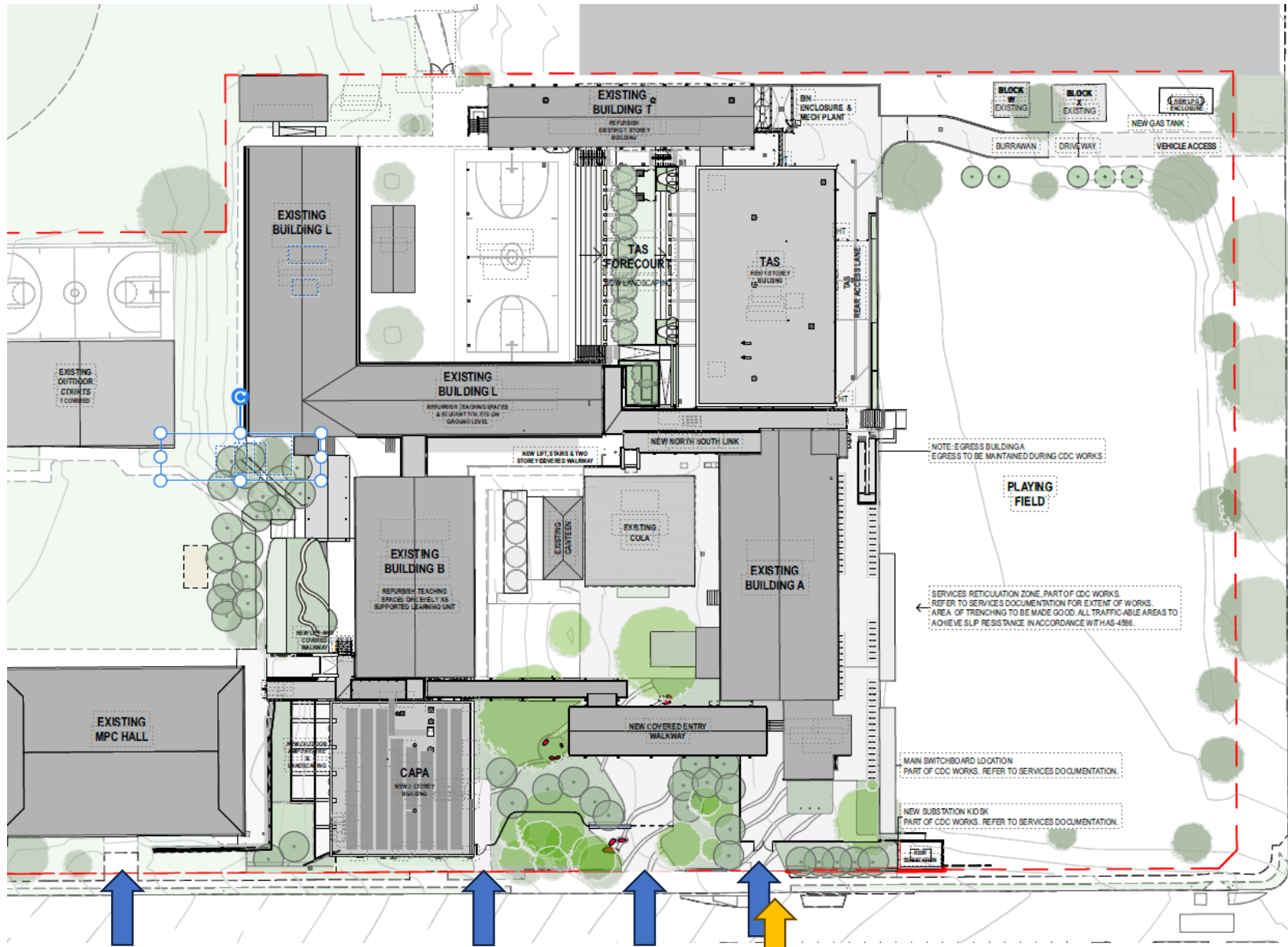
The actions that will be undertaken by the school include, but are not limited to:

- Instructing patrons to respect the amenity of surrounding residents by limiting noise;
- Include signage throughout building egress points and site access reminding patrons to minimise noise and respect the amenity of residents;
- Providing event staff members along travel paths to “usher” patrons which are leaving the event;
- Instructing event staff to prevent loitering of patrons outside the venue; and
- Limiting thoroughfare and access of areas which are in proximity of residential receivers.

Monitoring

In line with other operational plans to be implemented for the development, the intention is for these actions to be regularly reviewed and amended to suit requirements of the school and surrounding residential area. Hastings Secondary College Port Macquarie Campus staff will evaluate the acoustic management plan on an annual basis.

APPENDIX A – SITE PLAN



Pedestrian Access

Bicycle Access

Pedestrian entrances for occasional use only

Secondary
Pedestrian
Access for Peak
Times Only

Main Pedestrian
Access

APPENDIX B – TRANSPORT ACCESS GUIDE



Hastings Secondary College – Port Macquarie

Transport Access Guide

09/02/24

Project overview

Hastings Secondary College is committed to providing students with safe, easy and sustainable ways of getting to and from School. The options below include walking, cycling, catching public transport or by car.

Active ways to get to school



Walking to School

Students living around Port Macquarie could walk to school in 15 minutes or less, saving the need for drop-off and pick-up by car.

The map over the page shows safe and accessible walking trails for your child to travel to and from home and Hastings Secondary College. Footpaths are available on both sides of Owen Street between Burrawan Street and William Street. A footpath is provided on the north of Burrawan Street between Owen Street and Lord Street.

Pedestrian refuges are located at Owen Street to the south of the intersection with Gordon Street, midblock between Gordon Street and Burrawan Street, and north of the intersection with Burrawan Street.



Cycling to School

Families who live approximately 3km from the school, have the option of cycling to school. Children under 16 and adult riders accompanying and supervising them may ride on the footpath unless there are signs specifically prohibiting cycling.

To facilitate children cycling to school, Lord Street, Gordon Street, and Home Street can be utilised. A shared path is also provided on Mallawa Crescent while a bicycle lane is provided on Pacific Drive.

Children can then secure their bicycle at the school's bicycle parking spaces.

For more information contact:

School Infrastructure NSW
Email: schoolinfrastructure@det.nsw.edu.au
Phone: 1300 482 651
www.schoolinfrastructure.nsw.gov.au

Public Transport



Students may be eligible for a free or discounted transport pass. The School Student Transport Scheme (SSTS)

provides free public travel to and from home for eligible students. Students in Years 7-12 are eligible if the straight line distance is more than 2.0km, or if the walking distance is 2.9km or further.

Families can register students with Transport for NSW via the School Student Transport Scheme (SSTS) portal at <https://apps.transport.nsw.gov.au/ssts/>

There are several public bus services available to students that are within walking distance of the school and within the broader regional area. See overleaf for details of the bus routes, including additional services which run outside of the school peak periods.

There are also numerous school bus services in the morning and afternoon available to students.

More details of public and school bus services available for Hastings Secondary College during the morning and afternoon are detailed on the Busways website at <https://www.busways.com.au/nsw> and the Transport NSW Trip Planner website: <https://transportnsw.info/trip#/trip>

Tap on and tap off every time

Use your School Opal card every time you catch public transport to school.

It tells us how many people are using public transport to help us plan buses, trains and ferries to suit you.



Car

Carpooling is a great way to share the daily school drop off. Parents and carers are encouraged to get in touch with each other to make carpooling arrangements that suit them.

For parents who drive their children to school, students can be dropped off or picked up from school along Owen Street.

Families may also be eligible for the School Drive Subsidy which intends to partly offset the cost of using a private vehicle to drive to the eligible student all or part of the way to school. Families can apply for the School Drive Subsidy at <https://transportnsw.info/tickets-opal/ticket-eligibility-concessions/school-student-travel/apply-for-school-drive-subsidy>

Public Bus Services

ROUTE	DESCRIPTION	SERVICES
322	Lighthouse Plaza to Port Macquarie via Pacific Dr	2 services in the AM peak 1 services in the PM peak
322	Port Macquarie to Lighthouse Plaza via Pacific Dr	2 service in the AM peak 1 services in the PM peak
323	Port Macquarie to Lighthouse Beach (Loop Service)	Does not operate during school AM and PM peak hours

For more information contact:

School Infrastructure NSW
 Email: schoolinfrastructure@det.nsw.edu.au
 Phone: 1300 482 651
www.schoolinfrastructure.nsw.gov.au



NSW Department of Education – School Infrastructure

School Bus Services - BUSWAYS

ROUTE (Morning)	DESCRIPTION	ARRIVAL TO SCHOOL
S426	Upper Rollands Plains Rd to Telegraph Point PS TRANSFER TO BUS S468	7:52 (S468 Arrival)
S461	King Creek Rd to Hastings Secondary via Wauchope	7:52
S468	Kundabung Rodeo Dr to Hastings Secondary	7:52
S424	Gum Scrub Rd to Telegraph Point PS TRANSFER TO BUS S468	7:52 (S468 Arrival)
S470	Sancrox Billabong Dr to Hastings Secondary via Lake Innes Dr	7:50
S466	Bonny Hills to Hastings Secondary	7:45
S640	Port Macquarie John Oxley Dr to Port Macquarie HS	7:50
S641	Port Macquarie The Point Dr to Port Macquarie HS	7:50
S446	Port Macquarie Marbuk Ave to Hastings Secondary	7:45
S448	Settlement Point to Hastings Secondary via Lady Nelson Dr	7:52
S471	Port Macquarie Pacific Dr to Hastings Secondary	7:45
S464	Port Macquarie Koala St to Hastings Secondary	7:45
ROUTE (Afternoon)	DESCRIPTION	DEPARTURE FROM SCHOOL
S553	Hastings Secondary to Telegraph Point PS	14:20
S584	Hastings Secondary to Settlement Point via The Jib	14:23
S555	Hastings Secondary to Upper Rollands Plains Rd	14:25
S559	Hastings Secondary to Port Macquarie Jonas Absalom Dr	14:25
S572	Hastings Secondary to Port Macquarie Major Innes Rd	14:28
S575	Hastings Secondary to Port Macquarie Sherwood Rd	14:28
S520	Hastings Secondary to Bonny Hills	14:29
S556	Hastings Secondary to Port Macquarie Marbuk Ave	14:32
S579	Hastings Secondary to Sancrox Rawdon Islands Rd	14:32
S564	Hastings Secondary to Port Macquarie Pacific Dr	14:34
S600	Hastings Secondary to Port Macquarie Koala St	14:34
S654	Port Macquarie HS to Port Macquarie Koala Rd	14:36
S548	CATCH BUS S553 FROM SCHOOL & TRANSFER AT TELEGRAPH POINT PUBLIC SCHOOL Telegraph Point PS to Port Macquarie Depot	14:20 (S553 Departure)
S635	CATCH BUS S553 FROM SCHOOL & TRANSFER AT TELEGRAPH POINT PUBLIC SCHOOL Telegraph Point PS to Gum Scrub Rd via Cooperabung	14:20 (S553 Departure)
S537	CATCH BUS S584 FROM SCHOOL & TRANSFER AT WESTPORT HIGH SCHOOL TO ROUTE 336 THEN TRANSFER AT CAMERON ST & YOUNG ST Wauchope Young St to Wauchope King Creek Rd	14:23 (S584 Departure)

For more information contact:

School Infrastructure NSW
 Email: schoolinfrastructure@det.nsw.edu.au
 Phone: 1300 482 651
www.schoolinfrastructure.nsw.gov.au

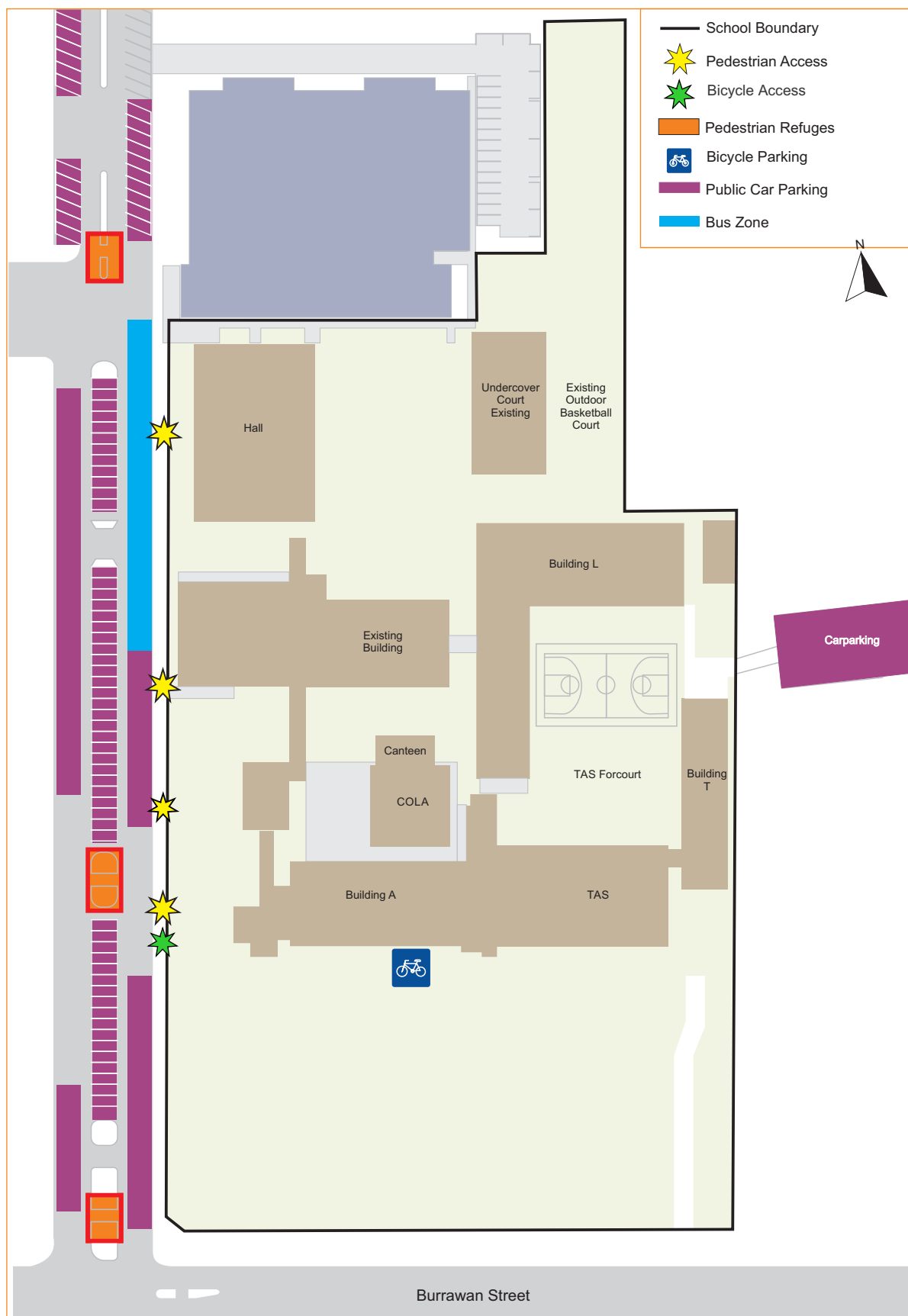




For more information contact:

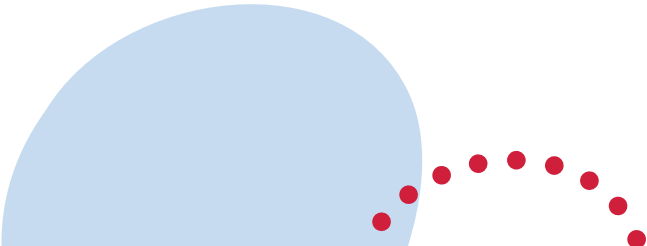
School Infrastructure NSW
 Email: schoolinfrastructure@det.nsw.edu.au
 Phone: 1300 482 651
www.schoolinfrastructure.nsw.gov.au





For more information contact:

School Infrastructure NSW
 Email: schoolinfrastructure@det.nsw.edu.au
 Phone: 1300 482 651
www.schoolinfrastructure.nsw.gov.au



Starting high school safely

Never too old to be safe

Starting high school is exciting and can mean lots of new experiences, like how you travel to and from school. As an independent traveller you're never too old to be safe.

Being independent means:

- taking more responsibility and learning how to manage your own safety as well as looking out for others
- focusing on what is happening around you
- not rushing to cross the road, catch a bus or train as that's when unsafe decisions can be made
- always removing your headphones and putting your phone away when crossing the road
- practising how to use a timetable and public transport, if it's new to you.

Plan and practise walking routes:

- identify safe places to cross
- look out before you step out
- use crossings and footpaths, where possible
- if no footpath is available, face oncoming traffic and walk as far away from the edge of the road as possible
- watch out for vehicles entering or leaving driveways, and for cars reversing in car parks
- avoid heavy traffic areas, if possible.

Have another plan

Discuss with your parents or carer:

- what to do when you're running late, miss the bus or train, lose your travel pass, feel unsafe travelling to and from school, or it's wet weather
- practice a few excuses you could use if encouraged by others to act unsafely. e.g. *"I'm not going to do that, if my parents found out I'd be grounded"*.



APPENDIX C – PCYC OPERATIONS PLAN

asongroup



PCYC Operations Plan

Hastings Secondary College Upgrade (SSD-11920082)

16 Owen Street, Port Macquarie

6 February 2024

P1600Ar01v02



info@asongroup.com.au
+61 2 9083 6601
Suite 17.02, Level 17,
1 Castlereagh Street,
Sydney, NSW 2000

Document Control

Project No	P1600A
Project	PCYC Operations Plan
Client	A W Edwards
File Reference	P1600Ar01v02_SSD PCYC Operations Plan, Port Macquarie

Revision History

Revision No.	Date	Details	Author	Approved by
-	30/10/2023	Draft	J. Wong	J. Laidler
01	19/12/2023	Issue I	J. Wong	J. Laidler
02	06/02/2024	Issue II	J. Wong	J. Wong

This document has been prepared for the sole use of the Client and for a specific purpose, as expressly stated in the document. Ason Group does not accept any responsibility for any use of or reliance on the contents on this report by any third party. This document has been prepared based on the Client's description of its requirements, information provided by the Client and other third parties.

Contents

Glossary

1	Introduction	1
1.1	Purpose	1
1.2	Authority Requirements	1
1.3	Reference Documents	3
2	Stakeholder Consultation	4
2.1	TfNSW	4
2.2	Council	4
2.3	Hastings Secondary College	4
3	Site Details	5
3.1	Site Location	5
3.2	Transport Amenities	5
3.3	Port Macquarie East Travel Mode Share	6
3.4	Public Transport	8
3.5	Active Transport	10
4	Travel Plan Framework	12
4.1	Movement Hierarchy	12
4.2	Action Plan	12
4.3	Communication Strategy	14
4.4	Mode Share Targets	15
5	Transport Operations and Access Management Plan	17
5.1	Operational Access Management Measures	17
6	Governance and Support	21
6.1	Travel Plan Coordinator	21
6.2	Resourcing	21
7	Monitoring and Review Process	22
7.1	Plan Maintenance	22
7.2	Monitoring and Review Actions	22
7.3	Feedback Framework	22
	Drivers Code of Conduct	1
	Objectives of the Drivers Code of Conduct	1
	Code of Conduct	1
	Crash or incident Procedure	2

Contents Continued

Figures

Figure 1: Site Location.....	5
Figure 2: Site Amenities.....	6
Figure 3: Destination Zone with Respect to the Site	7
Figure 4: Port Macquarie Bus Network (Source: Busways)	9
Figure 5: Cycle Routes (Source: TfNSW Cycleway Finder).....	11
Figure 6: Movement Hierarchy (Source: Road User Space Allocation Policy – January 2021)	12
Figure 7: Key Transport Amenities for Pedestrians/Cyclists and Vehicles	20

Tables

Table 1: SSD-11920082 MOD 2 Conditions	1
Table 2: 2021 Port Macquarie – East Travel Mode Share	8
Table 3: Public Bus Services	10
Table 4: Action Plan Measures	13
Table 5: Communication Strategy	15
Table 6: Mode Share Targets - Staff	16
Table 7: Expected Staff Numbers (Typical Weekday)	18
Table 8: Schedule of Use & Intended Group Activities (Typical Weekday)	18
Table 9: Bus Service Times – route 322	19
Table 10: Bus Services Times – route 323	19
Table 11: 10-Year Post Development Modelling Results	20

APPENDICES

- Appendix A. Driver Code of Conduct**
- Appendix B. Travel Access Guide**
- Appendix C. TfNSW Consultation**
- Appendix D. Council Consultation**

Glossary

Acronym	Description
AGRD	Austrroads Guide to Road Design
AGTM	Austrroads Guide to Traffic Management
CC	Construction Certificate
Council	Port Macquarie-Hastings Council
DA	Development Application
DCP	Development Control Plan
DoS	Degree of Saturation
DPIE	Department of Planning, Industry and Environment
FSR	Floor space ratio
GFA	Gross Floor Area
HRV	Heavy Rigid Vehicle (as defined by AS2890.2:2018)
LEP	Local Environmental Plan
LGA	Local Government Area
LoS	Level of Service
MOD	Section 4.55 Modification (also referred as a S4.55)
MRV	Medium Rigid Vehicle (as defined by AS2890.2:2018)
NHVR	National Heavy Vehicle Regulator
OC	Occupation Certificate
RMS Guide	Transport for NSW (formerly Roads and Traffic Authority), Guide to Traffic Generating Developments, 2002
S4.55	Section 4.55 Modification (also referenced as MOD)
S96	Section 96 Modification (former process terminology for an S4.55)
SRV	Small Rigid Vehicle (as defined by AS2890.2:2018)
TDT 2013/04a	TfNSW Technical Direction, Guide to Traffic Generating Developments – Updated traffic surveys, August 2013
TfNSW	Transport for New South Wales
TIA	Transport Impact Assessment
TIS	Transport Impact Statement
veh/hr	Vehicle movements per hour (1 vehicle in & out = 2 movements)

1 Introduction

1.1 Purpose

Ason Group has been engaged by A W Edwards to prepare a PCYC Operations Plan (the Operations Plan) for the Police Citizens Youth Club (PCYC) building located at 16 Owen Street, Port Macquarie.

The purpose of this Operations Plan is to provide guidance in relation to the traffic management arrangements for the Site. The overall objective is to ensure safe and efficient movement of vehicles, students, staff, and visitors. In particular, this Operations Plan details the following:

- A pedestrian access plan; and
- A vehicle access plan; and
- Car parking plan; and
- Servicing plan; and
- Details on the governance and administration of the Operations Plan.

1.2 Authority Requirements

In response to Condition D22 of the latest Development Consent SSD-11920082 MOD 2 which was issued on 4 April 2023, the following table provides details of the conditions and Ason Group's correlating response.

TABLE 1: SSD-11920082 MOD 2 CONDITIONS

Condition No.	Condition	Ason Group Response
D22	<i>Prior to the commencement of operation of the PCYC, a PCYC Operations Plan must be submitted to the Certifier. The plan must:</i>	Noted.
(a)	<i>be prepared by a suitably qualified consultant in consultation with Council, TfNSW and Hastings Secondary College;</i>	This Operations Plan has been prepared by suitably qualified consultants from Ason Group. Consultation with Council, TfNSW and Hastings Secondary College has been undertaken. Please refer to Section 2 .
(b)	<i>detail proposed operations including:</i>	-
(i)	<i>hours of operation;</i>	The PCYC building's operation hours will align with those approved under Condition E5 of SSD-11920082 MOD 2. The PCYC will operate between 6am to 10pm Monday to Sunday. <div style="border: 1px solid black; padding: 2px;">PCYC Hours of Operation E5. The PCYC may only operate between the hours of 6am to 10pm Monday to Sunday.</div> Please refer to Section 5.1.3 for further details on proposed operating hours throughout the week.
(ii)	<i>expected staff and volunteer attendance levels;</i>	PCYC have indicated the expected staff attendance levels throughout the day would

		range from 2 to 10 staff depending on the combination of intended group activities occurring simultaneously. Please refer to Section 5.1.4 for details of anticipated staff numbers for a typical day.
(iii)	<i>schedule of use and intended group activities;</i>	Schedule of use and intended group activities are discussed in Section 5.1.5 .
(c)	<i>include arrangements to promote the use of active and sustainable transport modes and reduce demand for parking, particularly during peak school operations, including:</i>	-
(i)	<i>objectives and mode share targets (i.e. site and land use specific, measurable and achievable and timeframes for implementation);</i>	Mode share targets for the Site are discussed in Section 4.4 . Staff mode share targets have been developed with consideration to the implementation of specific action measures and communication strategies. Mode share targets for the students/youths is expected to be identified once operations commence and travel mode share surveys are conducted to establish the baseline.
(ii)	<i>specific tools and actions to help achieve the objectives and mode share targets;</i>	Action measures and communication strategies will assist with achieving indicated mode share targets. This is further discussed in Section 4.2 and Section 4.3 .
(iii)	<i>details regarding the methodology and monitoring/review program to measure the effectiveness of the objectives and mode share targets, including the frequency of monitoring and the requirement for travel surveys to identify travel behaviours of users of the development.</i>	Monitoring of the efficacy this Operations Plan will be undertaken every 6 months and will comprise of users of the PCYC facility undertaking a travel questionnaire to determine the distribution of mode shares. A comparison of results can illustrate shifting mode shares and the efficacy of the methods outlined within Section 7 .
(d)	<i>include operational transport access management arrangements, including:</i>	-
(i)	<i>the location of all car parking spaces on the site and their allocation (i.e. staff, visitor, accessible, emergency, etc.);</i>	Car spaces will be located at the rear of the Site and comprises of 19 car spaces (inclusive of 2 accessible spaces). The car park will be utilised by staff and authorised people. Refer to Section 3.2 and Figure 2 .
(ii)	<i>delivery and service vehicle and bus access and management arrangements;</i>	It is expected that delivery, service vehicle and bus access will be undertaken on Owen Street only. There will be approximately 3 deliveries per week. Please refer to Section 5.1.6 which outlines the proposed vehicular access.
(iii)	<i>management of approved access arrangements;</i>	Site management will be responsible for coordinating pedestrian and vehicle movements to ensure the safety of all users within the PCYC, while maintaining efficient operations. Section 5.1.1 and Section 5.1.2 outlines management's key responsibilities. Further, please refer to Section 5.1.6 for details on access arrangements for pedestrians/cyclists and vehicles.

(iv)	<i>potential traffic impacts on surrounding road networks and mitigation measures to minimise impacts, including measures to minimise impacts during school hours; and</i>	Please refer to Section 5.1.7.
(e)	<i>measures to promote and support the implementation of the plan, including financial and human resource requirements, roles and responsibilities for relevant employees involved in the implementation of the plan; and</i>	Please refer to Section 6.
(f)	<i>a monitoring and review program.</i>	Please refer to Section 7.

1.3 Reference Documents

In preparing this Operations Plan, Ason Group has referenced the following key planning documents, guidelines, and reports.

- Transport for NSW (TfNSW), Integrated Public Transport Service Planning Guidelines, Sydney Metropolitan Area, December 2013.
- Ason Group, Transport Assessment, State Significant Development Application, Hastings Secondary College – Port Macquarie Campus, dated 13 May 2021, ref: P1600r01v7¹.
- Ason Group, Preliminary School Transport Plan, Hastings Secondary College – Port Macquarie Campus, 16 Owen Street, Port Macquarie, dated 20 May 2021, ref: P1600r02v4².

¹ <https://majorprojects.planningportal.nsw.gov.au/prweb/PRRestService/mp/01/getContent?AttachRef=SSD-11920082%2120210524T064411.281%20GMT>

² <https://majorprojects.planningportal.nsw.gov.au/prweb/PRRestService/mp/01/getContent?AttachRef=SSD-11920082%2120210524T064412.137%20GMT>

2 Stakeholder Consultation

Over the course of the development of this Operations Plan, the project team has consulted with key stakeholders including Transport for New South Wales (TfNSW), Port Macquarie-Hastings Council (the Council), and the Hastings Secondary College school principal (the School Principal).

2.1 TfNSW

Consultation with TfNSW on this Operations Plan has been undertaken. No comments were received during the TfNSW consultation period as advised by A W Edwards on 6 February 2024. Refer to **Appendix C**.

2.2 Council

Consultation with Council on this Operations Plan has been undertaken. Endorsement on the Operations Plan from Council was received on 11 January 2024 and can also be found in **Appendix D**.

2.3 Hastings Secondary College

Consultation between the project team, PCYC, and Hastings Secondary College has been undertaken as part of preparation of this Operations Plan following the submission of the draft Operations Plan (ref: P1600Ar01). Comments were received on 11 December 2023 from RPS Group and the draft Operations Plan was subsequently updated. Comments received predominantly relate to clarification on who will be responsible for establishing the TPC, clarification on waste collection details, and confirmation on who will be funding the monitoring of this Operations Plan.

Any further consultation undertaken with Hastings Secondary College will be documented in this section.

3 Site Details

3.1 Site Location

The PCYC building (the Site) is located approximately 1.2km south east of the Port Macquarie town centre, with access from Oxley Highway (Gordon Street) via Owen Street to the centre, William Street via Owen Street to the north and Burrawan Street via Owen Street to the south. A maintenance access road exists to the east of the Site along Burrawan Street.

The Site is located at 16 Owen Street, Port Macquarie and is legally known as Lot 111 in DP 1270315. The Site sits adjacent to the Hastings Secondary College and is located within a coastal setting (east), with residential (single two storey and residential flat buildings) located to the west and south and Port Macquarie Bowling Club to the north. There are several on-street parking on the surrounding street.



Figure 1: Site Location

3.2 Transport Amenities

Onsite transport amenities for the Site include the following:

- 19 onsite car spaces (including 2 accessible spaces) (for staff and authorised people only); and
- 2 onsite minibus spaces; and
- 6 onsite bicycle spaces positioned at the entry point.

These facilities are detailed in **Figure 2**.

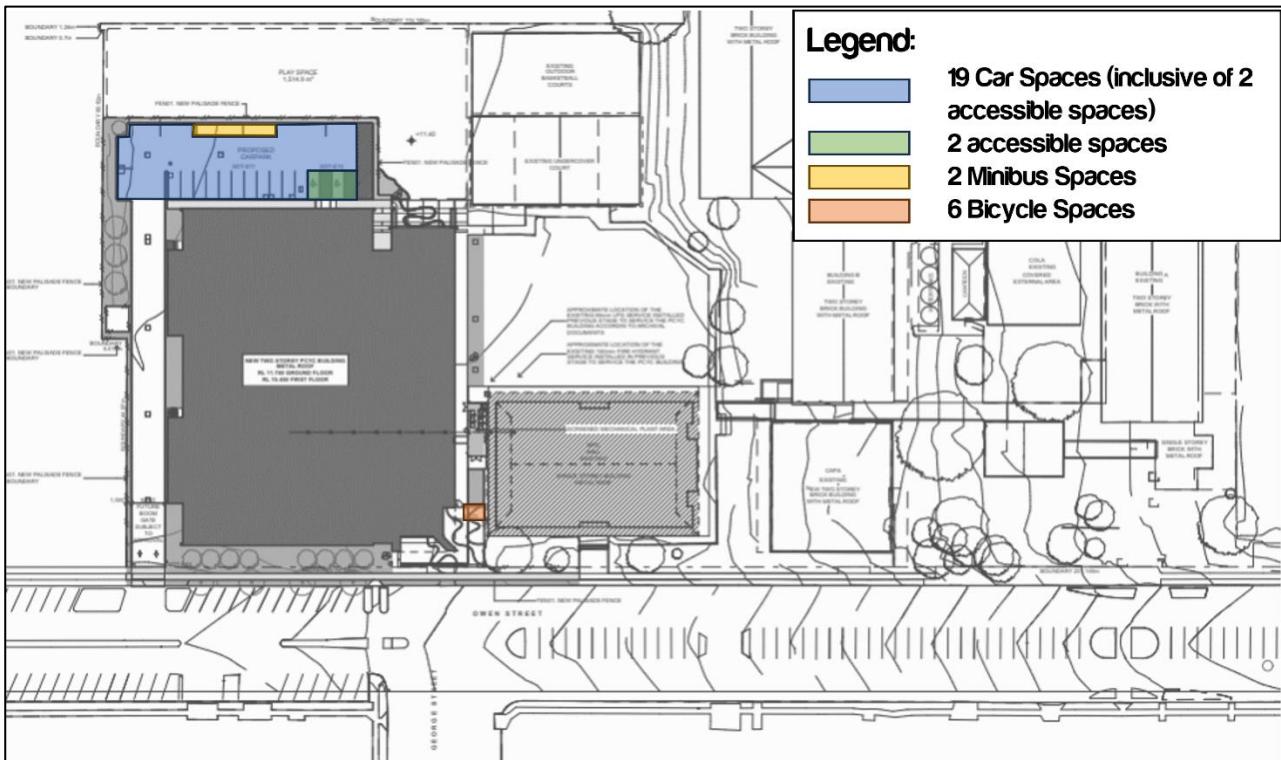


Figure 2: Site Amenities

Nearby transport amenities for the Site include the following:

- Bus zones and bus stops along Owen Street, Lord Street and Home Street which service bus routes 322 and 323.
- Bicycle infrastructure facilitated by general roads such as Home Street, Lord Street and Gordon Street. Further, a shared path is located along Mallowa Crescent while a bicycle lane is located along Pacific Drive and William Street.
- Pedestrian footpath along both sides of Owen Street. There are also some footpath sections on Burrawan Street, Gordon Street, Church Street and William Street.
- A total of 5 pedestrian refuges are located along Owen Street between William Street and Burrawan Street.
- Existing on-street public parking along Owen Street and on surrounding local streets.

3.3 Port Macquarie East Travel Mode Share

An analysis of the 2021 census data has been undertaken to determine the mode share of how employees travel to work at Port Macquarie – East with a destination zone ID: 116190002. This destination zone with respect to the Site is shown in **Figure 3**.

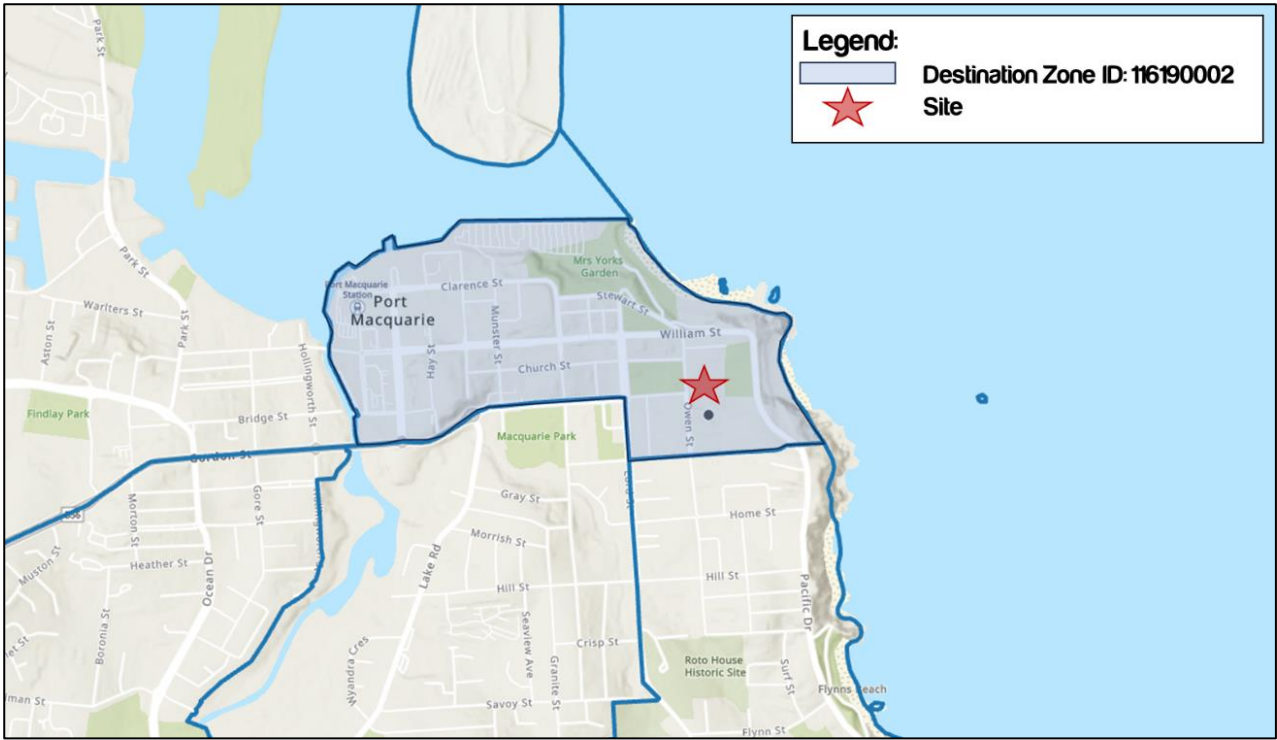


Figure 3: Destination Zone with Respect to the Site

The identified travel mode shares for the Site is presented in **Table 2**.

TABLE 2: 2021 PORT MACQUARIE – EAST TRAVEL MODE SHARE

Travel Mode	2021 Mode Share (from 2021 Census Data)
Car, as Driver	83%
Car, as Passenger	9%
Walk	5%
Bus	1%
Cycle	1%
Ferry	0%
Train	0%
Other ¹⁾	1%

Notes: 1) This category includes those who “Worked at home”, “Did not go to work”, and “Not stated” categories based on the 2021 ABS Census data.

For the purpose of this report, it is assumed that the identified mode shares have not, and will not, materially change the operation of the PCYC.

3.4 Public Transport

3.4.1 Train Services

The Site is located some 17.5km east of Wauchope Station. Hence, any access to Wauchope Station will be provided by buses running between Port Macquarie to Wauchope (i.e. bus route 336).

Given the distance to Wauchope Station, it is not anticipated that youth or staff would access the Site via train services.

3.4.2 Bus Services

Having regard to the standard bus travel, the *Integrated Public Transport Service Planning Guidelines* state that bus services include the travel mode choices of site within 400 metres (approximately 5 minutes walking distance for adults) of a bus stop. **Figure 4** depicts Port Macquarie’s bus network with respect to the Site.

It is noted that there are bus stops along Owen Street, Lord Street and Home Street which service bus routes 322 and 323. A summary of bus routes 322 and 323 is shown in **Table 3**.

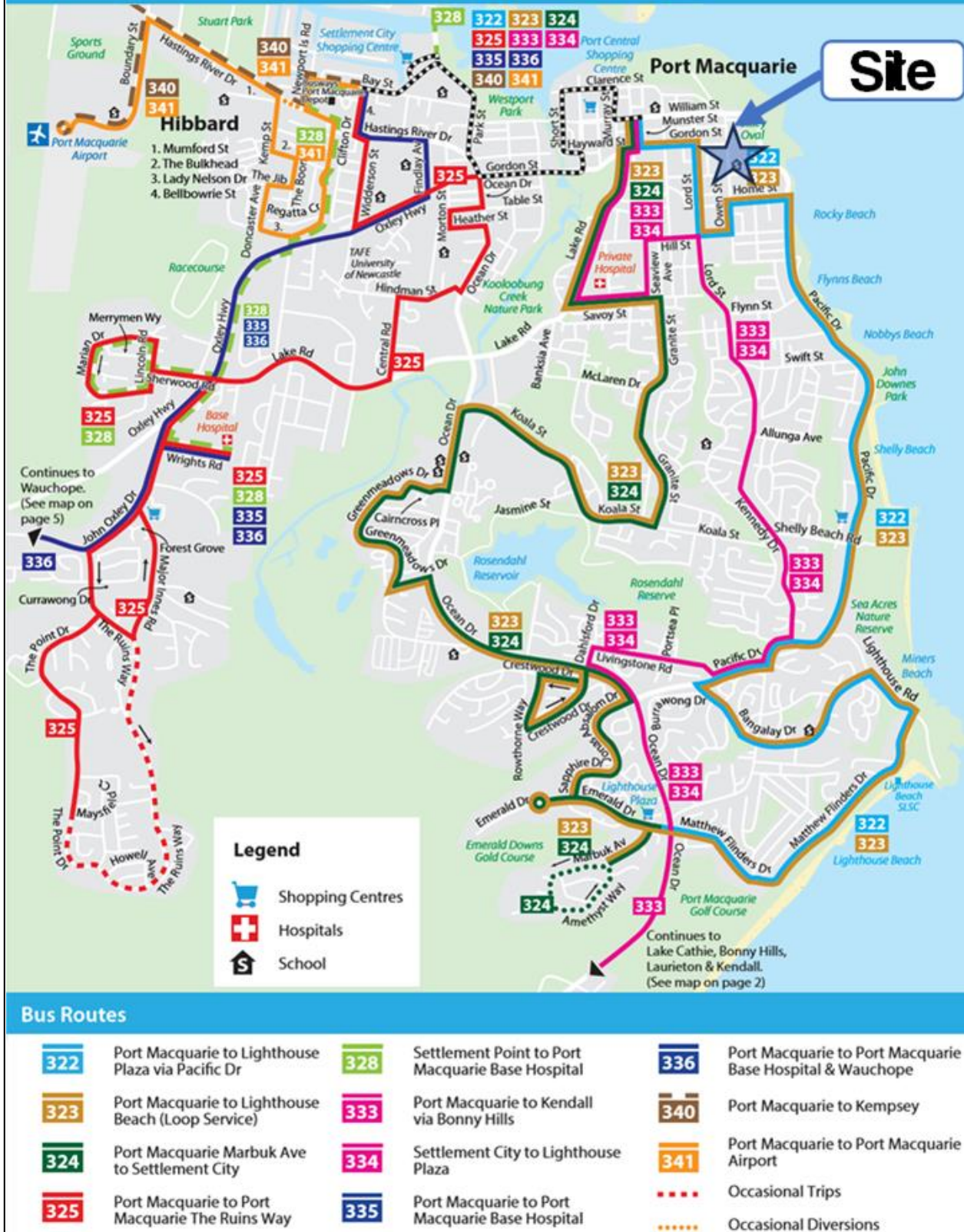


Figure 4: Port Macquarie Bus Network (Source: Busways³)

³ <https://www.busways.com.au/sites/default/files/network-maps/2021-11-25/Port%20Macquarie%20Network%20Map.pdf>

TABLE 3: PUBLIC BUS SERVICES

Route	Description	Services (on a typical weekday)
322	Lighthouse Plaza to Port Macquarie via Pacific Drive	1 service in the AM road network peak hour 1 service in the PM road network peak hour
322	Port Macquarie to Lighthouse Plaza via Pacific Drive	1 service in the AM road network peak hour 1 service in the PM road network peak hour
323	Port Macquarie to Lighthouse Beach (Loop Service)	Does not operate during AM and PM road network peak hours

Notes: 1) AM road network peak: 7:45am – 8:45am

2) PM road network peak: 4:00pm – 5:00pm

3.5 Active Transport

3.5.1 Pedestrian Accessibility

To facilitate pedestrian access to and from the surrounding road network to the Site, pedestrian refuges and footpaths have been provided along both sides of Owen Street. Further, there are also some footpath sections on Burrawan Street, Gordon Street, Church Street and William Street which can be utilised to access the Site.

3.5.2 Cyclist Accessibility

To enable cyclist access to and from the broader road network to the Site, the *TfNSW Cycleway Finder* highlights that Home Street, Lord Street and Gordon Street are general roads which can facilitate cyclist access. In addition, there is a shared path located along Mallowa Crescent, and a bicycle lane located along Pacific Drive and William Street.

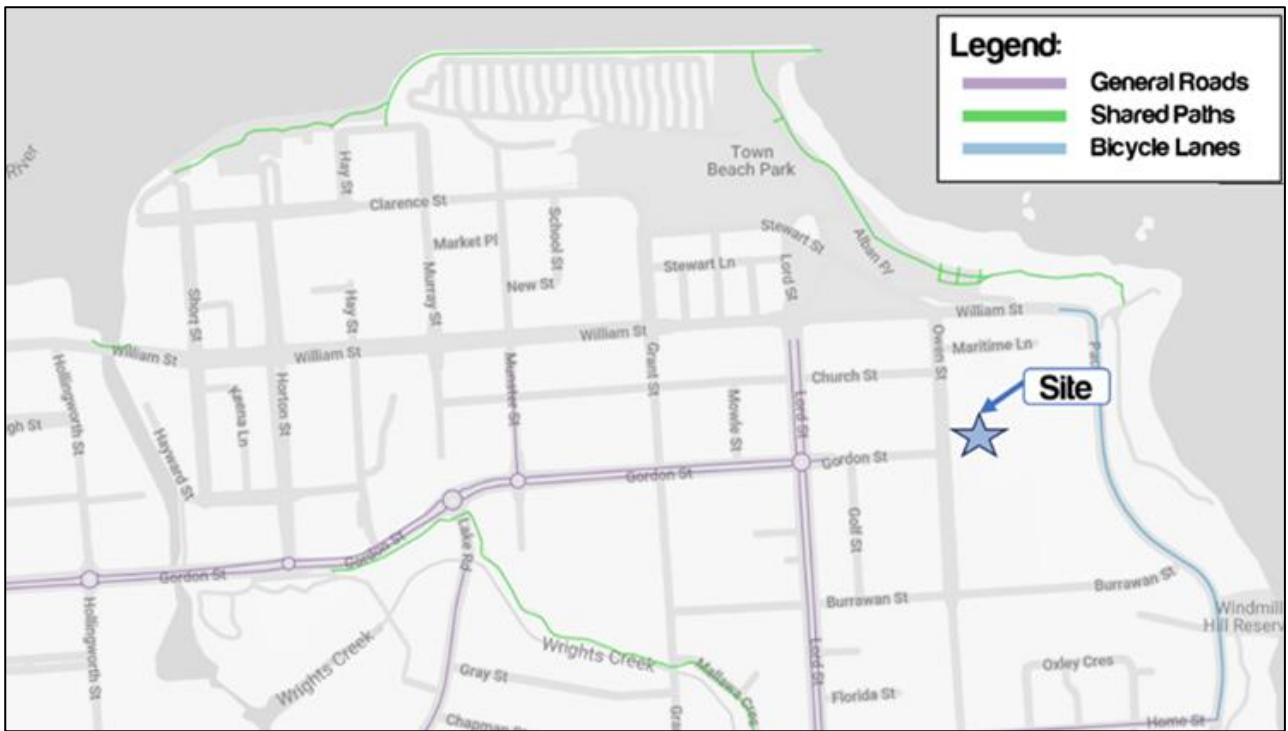


Figure 5: Cycle Routes (Source: TfNSW Cycleway Finder⁴)

⁴ <https://maps.transport.nsw.gov.au/egeomaps/cycleway-finder/>

4 Travel Plan Framework

4.1 Movement Hierarchy

In a broad sense, the Operations Plan is intended to encourage the use of active and public transport thereby reducing the overall distance travelled by private vehicles.

This Operations Plan adopts the following movement hierarchy with priority given to 'active transport', followed by mass public transport, and lastly the use of cars and other private vehicles. This hierarchy is reflected in the Road User Space Allocation Policy, January 2021 prepared by TfNSW.

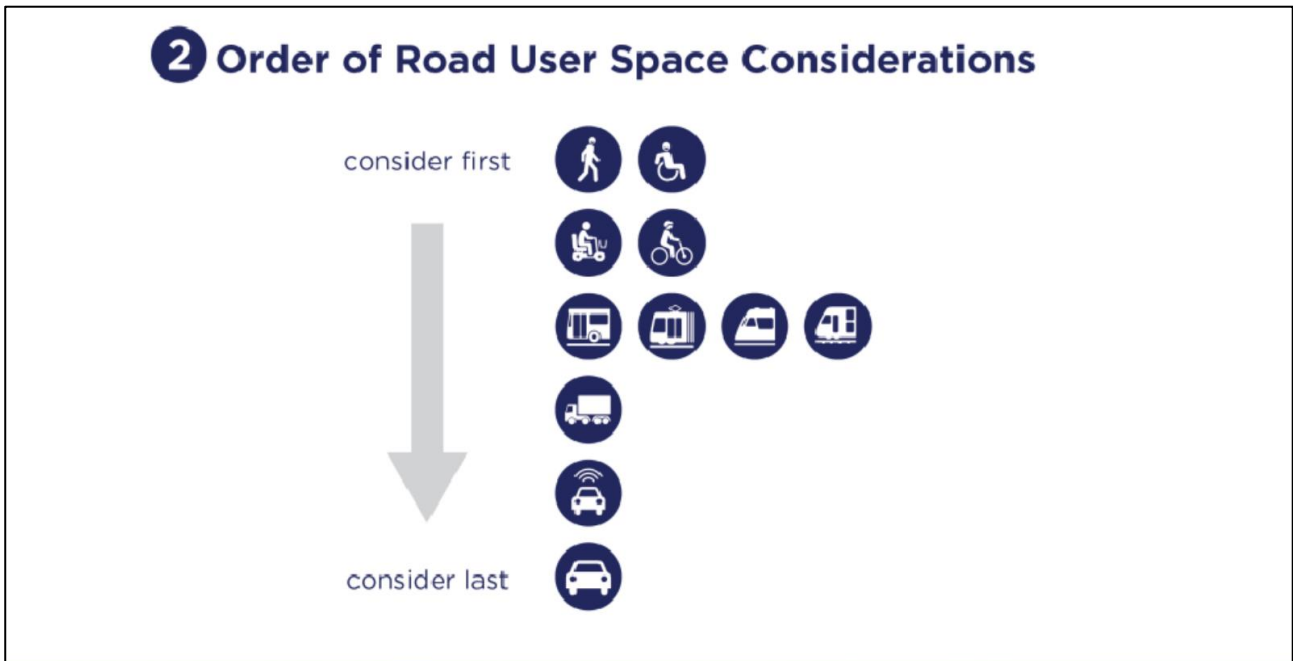


Figure 6: Movement Hierarchy (Source: Road User Space Allocation Policy – January 2021)

4.2 Action Plan

4.2.1 Action Plan Measures

The following specific actions have been identified to help achieve mode share targets and to satisfy Condition (c)(ii) of SSD-11920082 MOD 2.

TABLE 4: ACTION PLAN MEASURES

Item No.	Action / Description	Target	Timeframe	Responsibility
1. General				
1.1	Establish a centralised Travel Plan Coordinator (TPC) who is to take responsibility for the ongoing review and monitoring of this Operations Plan. This person(s) shall also provide direction to staff/parents in relation to specific requirements arising from the Operations Plan.	Site Administration	By operational commencement date	Joint Use Steering Committee (as per license agreement)
1.2	Provide 'Travel Welcome Pack' for newly employed staff, highlighting alternate modes of transport other than the use of a private vehicle.	Staff	By operational commencement date and ongoing	TPC
1.3	Review of Operations Plan as a regular item on the agenda of staff/management meetings.	Staff	Annually	TPC
2. Walking & Cycling				
2.1	Promote National Ride to Work Day in conjunction with Hastings Secondary College to encourage participation. This provides an opportunity for youth, parents, and staff to try riding to school and to the Site as well as celebrating those that currently utilise bicycles.	Staff, Youth and Parents	Annually	TPC
2.2	Promote Walk to Work Day in conjunction with Hastings Secondary College to encourage participation. Similar to the above, this provides an opportunity for youth, parents, and staff to try walking to school and to the Site. Older youth can be paired with younger youth who live close together to walk to school or the Site as a pair or group.	Staff, Youth and Parents	Annually	TPC
2.3	Develop further Site-specific activities designed to get people moving with reward participation. For example, a competition to see which staff and/or youth in each age group can get the most 'steps' in a given time period; similar to September activities.	Staff, Youth and Parents	Annually	TPC
2.4	Advocate, provide, update, and maintain accessible, safe and weather protected pedestrian and bicycle facilities to and from the Site.	Staff and Youth	On-going	TPC / Parents

TABLE 4: ACTION PLAN MEASURES

2.5	In accordance with the cycling mode share targets identified, sufficient bicycle parking spaces and end of trip facilities shall be provided and maintained.	Staff and Youth	On-going	TPC
3. Public Transport				
3.1	Display route maps and timetables (for services within 10 minutes walking distance) in high trafficable areas within the Site.	Staff and Youth	On-going	TPC / DoE
3.2	Advocate for TfNSW to improve public transport services in response to any increased development within the surrounding area.	Staff and Youth	On-going	TPC / DoE
3.3	Update this Operations Plan to reflect changes to any bus routes and service times.	Staff and Youth	On-going	TPC
3.4	Undertake a review to promote initiatives for staff using public transport. This may include a review of potential tax incentives for Government employees that use public transport.	Staff	On-going	TPC
3.5	Promote the use of public transport for youth with a rewards scheme. i.e., youth are provided incentives to travel to and from the Site.	Youth	On-going	TPC
4. Reducing Car Travel				
4.1	Review initiatives for staff and parents to promote carpooling. This may include (but not limited to) the provision of online services or forums to facilitate ease of finding carpooling scheme participants on a day-to-day basis.	Staff and Parents	On-going	TPC
4.2	Liaise with staff to discuss the feasibility of a parking management scheme which would discourage the use of single occupant car travel to the Site while incentivising employees to travel by alternative modes of transport.	Staff	On-going	TPC

4.3 Communication Strategy

With consideration to the above action plan measures, a communication strategy has been developed that can be adopted by the future Site administration and TPC to communicate measures detailed above. It should be noted that this communication strategy is subject to review following discussions with the Site administration.

TABLE 5: COMMUNICATION STRATEGY

What	When	Method	Target	Responsibility
Share objectives and goals with the PCYC community.	Every 6 months.	- Welcome packs to new staff and families. - Social media. - Website.	Staff, Youth, Parents	TPC
Provide information regarding transport options to and from the Site, and on-site end-of-trip facilities.	Every 6 months. This information is to be available always and easily accessible.	- Welcome packs to new staff and families. - Website. - Information boards on Site grounds.	Staff, Youth, Parents	TPC
Provide details regarding initiatives that encourage alternative modes of transport, such as: Ride-To-Work Day, Walk-To-Work Day, September, etc.	Annually prior to the event.	- Social media. - Website. - E-newsletters.	Staff, Youth, Parents	TPC
Liaise with parents regarding the education programs provided by the Site that encourages alternative transport modes.	Every 6 months. This information is to be available always and easily accessible.	- Welcome packs to new staff and families. - Website.	Youth and Parents	TPC
Provide links to key resources regarding the operation of school zones, road safety, and parking restrictions within the local area.	Every 6 months. This information is to be available always and easily accessible.	- Welcome packs to new staff and families. - Social Media. - Website. - E-newsletters.	Parents	TPC

4.3.1 Welcome Packs

As detailed above, new staff and families shall be provided with a ‘welcome pack’ as part of the onsite induction process which includes this Operations Plan and other information in relation to sustainable transport choices.

4.4 Mode Share Targets

4.4.1 Staff

Table 2 outlines the mode share for the destination zone 116190002 based on the 2021 census data provided by the Australian Bureau of Statistics. With consideration of the Action Plan, Communication

Strategy and the existing active transport connections of the Site, the following mode share targets have been identified for staff.

TABLE 6: MODE SHARE TARGETS - STAFF

Travel Mode	2021 Mode Share (from 2021 Census Data)	Aspirational Mode Share Targets	Difference
Car, as Driver	83%	76%	-7%
Car, as Passenger	9%	11%	+2%
Walk	5%	7%	+2%
Bus	1%	3%	+2%
Cycle	1%	2%	+1%
Ferry	0%	0%	0%
Train	0%	0%	0%
Other ¹⁾	1%	1%	0%
TOTAL	100%	100%	0%

Notes: 1) This category includes those who “Worked at home”, “Did not go to work”, and “Not stated” categories based on the 2021 ABS Census data.

4.4.2 Youth

At the time of preparation of this Operations Plan, the Site is still under construction and therefore operations, have not started yet. Upon commencement of operations, target mode shares for youth can be obtained following completion of travel mode share surveys.

It is expected that the proposed mode share targets for staff and youth will be reviewed every 6 months as part of the ongoing monitoring and review process discussed in **Section 7**.

5 Transport Operations and Access Management Plan

5.1 Operational Access Management Measures

5.1.1 Plan of Management

Site management can and will coordinate pedestrians and vehicles on-site to ensure the safety of personnels while maintaining efficient operations. The following management measures are proposed.

5.1.2 Key Responsibilities of Management

Management shall:

- Ensure all staff is provided with sufficient training to undertake the required tasks. This includes responsibility for measures to ensure that all staff, parents/carers, visitors, and youth is familiar with site-specific rules through appropriate site induction procedures.
- Be familiar with and address their respective duty of care requirements in accordance with the applicable state Work Health and Safety (WHS) legislation.
- Ensure WHS Incident logbooks are maintained and undertake necessary action(s) in relation to any reported issues.

5.1.3 Hours of Operation

The PCYC building's operating hours will be the following which aligns with Condition E5 of SSD-11920082 MOD 2. It is noted that Condition E5 permits operations from 6am to 10pm Monday to Sunday.

- Monday to Friday 6am – 10pm
- Saturday and Sunday 7am – 7pm

However, PCYC has advised that weekend hours could be extended pending bookings/usage and still be aligned with Condition E5.

5.1.4 Expected Staff and Volunteer Attendance

Ason Group has been advised that the number of staff could range from 2 to 10 persons throughout the day depending on the combination of activities being undertaken at any given time. The table below outlines the expected number of staff for a typical weekday as well as corresponding combination of activities.

TABLE 7: EXPECTED STAFF NUMBERS (TYPICAL WEEKDAY)

Time	Intended Group Activities
6am – 9am	2-3 staff members (Reception / Fit for Life / Gym)
9am – 3pm	3-4 staff members (School Sport / Gymnastics / Reception)
3pm – 8pm	8-10 staff members (Reception / Gymnastics Coaches / Learn to Plan / Sports Competitions / Referees / Gym)
8pm – 10pm	2-4 staff members (Reception / Sports Competitions / Referees)

5.1.5 Expected Schedule of Use and Intended Group Activities

The expected schedule of use and intended group activities for a typical day is shown below. Types of activities will include gymnastics, gym members, basketball, netball, futsal, pickleball, badminton, table tennis, and general meetings.

TABLE 8: SCHEDULE OF USE & INTENDED GROUP ACTIVITIES (TYPICAL WEEKDAY)

Time	Intended Group Activities
6am – 9am	<ul style="list-style-type: none"> 15-20 persons per hour attending Gym 20-30 persons attending Fit for Life 10-15 persons attending Clontarf
9am – 3pm	<ul style="list-style-type: none"> 10-15 persons per hour attending Kindy gym / Gym (School priority use during these hours)
3pm – 8pm	<ul style="list-style-type: none"> 50-60 persons per hour attending various activities such as Gymnastics, Learn to Play, Junior and Senior Sports Competitions, and Gym
8pm – 10pm	<ul style="list-style-type: none"> 40 persons per hour attending various activities such as Gym and Sports Competitions

5.1.6 Pedestrian/Cyclist and Vehicular Access

Shown in context within **Figure 7**, pedestrian and vehicle access arrangements are as follows:

- **Pedestrian Access** – 1 main entrance on Owen Street, a secondary access is located at the side of the PCYC building for Hastings Secondary College staff and student access.
- **Pedestrian Refuges** – 5 along Owen Street between Burrawan Street and William Street.
- **Pedestrian Footpaths** – Footpath present on both sides of Owen Street.
- **Bicycle Spaces** – A total of 6 spaces will be provided at the main entrance in close proximity to the foyer of the Site.
- **Site Car park** – Available for staff and authorised people to utilise which can be accessed off Owen Street. It comprises of 19 car spaces (inclusive of 2 accessible spaces) and 2 minibus spaces.

- **On-street parking** – The surrounding road network consists of on-street parking which may be utilised by personnels of the Site.
- **Bus Access** – There is an existing bus zone (Stop ID: 2444361) in front of Hastings Secondary College which services route 322, providing a connection between Lighthouse Plaza & Port Macquarie via Pacific Drive. The bus zone operates between 7:30am – 9am and 1:30pm – 3pm and is also utilised by school buses for students that attend Hastings Secondary College. The table below outlines the periods the bus zone operates throughout the week.

TABLE 9: BUS SERVICE TIMES – ROUTE 322

Day	Time
Monday - Friday	7am to 7:30pm
Saturday	8am to 5:45pm
Sunday and Public Holidays	8:15am to 4:15pm

Additionally, the Site is ~400m from the bus stop (Stop ID: 2444194) on Lord Street which services the bus route 323. It is expected that any personnels that get dropped off at this bus stop would then access walk to the Site via the footpaths on Gordon Street and utilise the pedestrian refuge on Owen Street. Bus route 323 is a loop service and provides a connection between Port Macquarie and Lighthouse Beach.

TABLE 10: BUS SERVICES TIMES – ROUTE 323

Day	Time
Monday - Friday	6:15am to 10:15pm Friday offers additional nighttime service which finishes at 23:15pm
Saturday	6:15am to 11:15pm
Sunday and Public Holidays	Does not operate

Further details on the above bus routes and services can be found on TfNSW's website⁵.

- **Service Vehicle Access** – Waste collection and deliveries will occur outside of Hastings Secondary College's peak traffic times during the week to avoid conflict with general drop-off / pick-up from the school.

Waste collection and deliveries will be undertaken on the side access road along the northern boundary of PCYC. There will be approximately 3 deliveries per week from a combination of the following: Coca Cola, Officeworks, Coles, and Woolworths. Deliveries will be facilitated by predominantly vans.

Site administration and management staff are to ensure drivers are familiar with the delivery access and the Driver Code of Conduct. A copy of the Code is included in **Appendix A**.

⁵ <https://transportnsw.info/routes/bus>

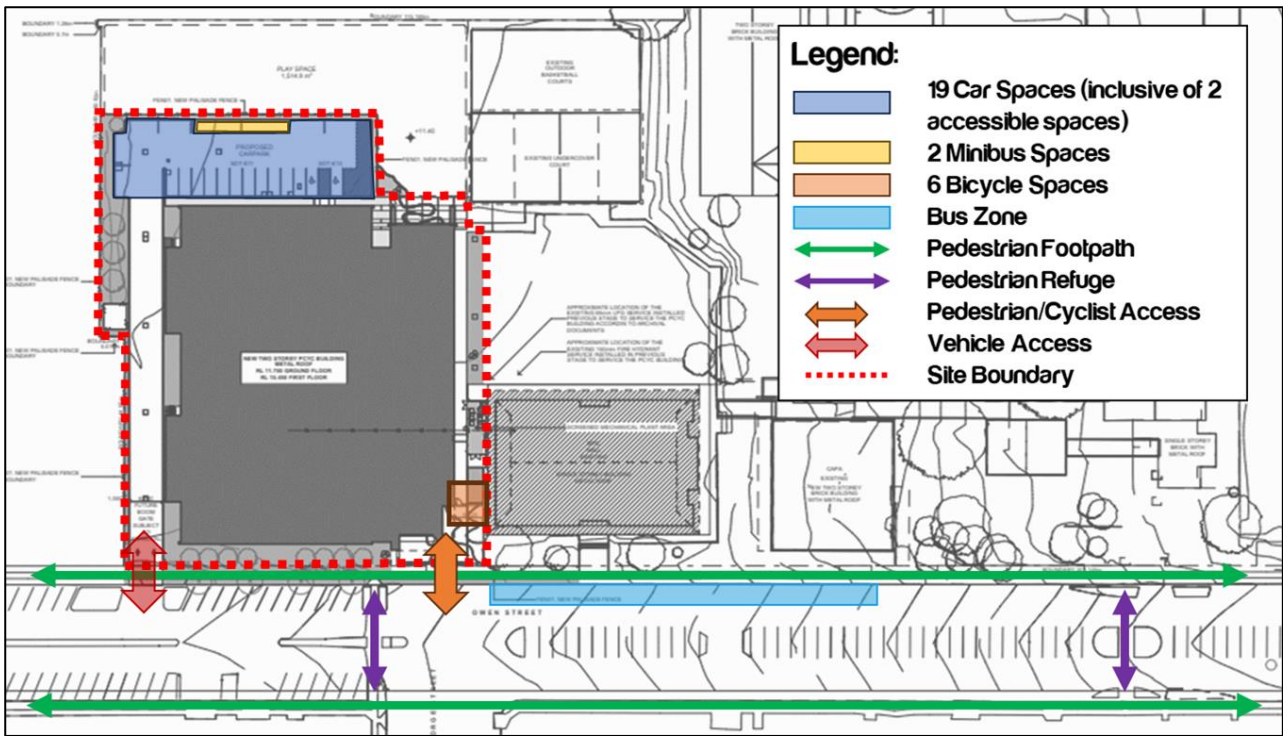


Figure 7: Key Transport Amenities for Pedestrians/Cyclists and Vehicles

5.1.7 Traffic Impacts

The traffic impact resulting from operation of the PCYC building has previously been assessed within the original SSD-11920082 application. The approved modelling also considers the traffic from Hastings Secondary College 10 years post development. A summary of the modelling results has been reproduced below which demonstrates Owen Street / Gordon Street and Owen Street / Burrawan Street intersections will operate at LoS A.

TABLE 11: 10-YEAR POST DEVELOPMENT MODELLING RESULTS

Intersection	Control Type	Period	Average Vehicle Delay (seconds)	Level of Service
Owen Street / Gordon Street	Priority	Network AM Peak	6.7	A
		School PM Peak	6.7	A
		Network PM Peak	6.5	A
Owen Street / Burrawan Street	Priority	Network AM Peak	8.0	A
		School PM Peak	7.1	A
		Network PM Peak	6.1	A

In order to minimise the likelihood of traffic impacts to the local road network, it is further suggested that any waste collection and deliveries should be undertaken outside of general drop-off / pick-up of Hastings Secondary College. Additionally, it is recommended that start and finish times of group activities are staggered to minimise the chance of queuing.

6 Governance and Support

6.1 Travel Plan Coordinator

To assist with the management of the Operations Plan, there shall be a Travel Plan Coordinator (TPC) nominated who shall be responsible for:

- Engaging with staff and parent bodies,
- Implementing and promoting specific tools and actions discussed in **Section 4.2** and **Section 4.3** to help achieve the mode share targets,
- Monitoring the effectiveness of the Operations Plan as discussed in **Section 7**,
- Providing advice in relation transport-related subjects to staff, management, and visitors, as required, and,
- Liaising with external parties (i.e., Council) in relation to Operations Plan matters.

This role does not necessarily require a full-time position; however, it should be clearly designated among the key responsibilities of the Site's management team. Based on project team's advice, the Joint Use Steering Committee will be responsible for establishing a centralised TPC. The TPC will be responsible for the implementation and monitoring of the Operations Plan.

6.2 Resourcing

It is not anticipated that the maintenance of this Operations Plan will have significant ongoing cost implications and shall be reviewed every 6 months for the best outcome. The Department of Education will be required to fund with contribution from PCYC (as per license) the monitoring of the Operations Plan, it is recommended that a certain sum of fund is allocated for monitoring activities.

7 Monitoring and Review Process

7.1 Plan Maintenance

This Plan shall be subject to ongoing review and will be updated as necessary in response to changing requirements. A review is to be undertaken, ideally every 6 months, with the report to be updated accordingly. Regular review will be undertaken by the Travel Plan Coordinator (TPC), as required.

Key considerations regarding the review of the Plan shall be:

- Updating baseline conditions to reflect any changes to the transport environment in the vicinity of the Site such as changes to bus services, new cycle routes, new roads, etc. In this regard, review of the Operations Plan may be undertaken on a more frequent basis.
- Identifying any shortfalls and develop an updated Operations Plan to address issues.
- Tracking progress against proposed travel mode targets,
- Ensure travel mode targets are updated (if necessary) to ensure they remain realistic but also ambitious.

7.2 Monitoring and Review Actions

To assess the efficacy of the Operations Plan, the following actions are to be undertaken by the TPC.

- Undertake community consultation to gauge feedback regarding implemented Operations Plan and areas for improvement to improve traffic conditions.
- Conduct physical counts and visual surveys after the first 6 and 12 months.
- Periodic on-site review of facilities such as bicycle racks.

It is recommended that an initial audit be undertaken within 6 months of the PCYC building opening to establish baseline conditions as early as possible.

7.3 Feedback Framework

Following the review actions undertaken as part of the review process, feedback is to be provided to key stakeholders including: TfNSW, and Council detailing the efficacy of the Operations Plan. The Operations Plan will then be adapted accordingly.

Appendix A. Driver Code of Conduct

Drivers Code of Conduct

Safe Driving Policy for PCYC building located at 16 Owen Street, Port Macquarie.

Objectives of the Drivers Code of Conduct

- Minimise conflict with other road users; and
- Minimise road traffic noise; and
- Ensure minibus drivers or bus drivers use specified routes.

Code of Conduct

All vehicle operators accessing the site must:

- Take reasonable care for his or her own personal health and safety.
- Not adversely, by way of actions or otherwise, impact on the health and safety of other persons.
- Notify their employer if they are not fit for duty prior to commencing their shift.
- Obey all applicable road rules and laws at all times.
- In the event an emergency vehicle behind your vehicle, pull over and allow the emergency vehicle to pass immediately.
- Obey the applicable driving hours in accordance with legislation and take all reasonable steps to manage their fatigue and not drive with high levels of drowsiness.
- Obey all on-site signposted speed limits and comply with directions of traffic control supervisors in relation to movements in and around temporary or fixed work areas.
- Ensure all loads are safely restrained, as necessary.
- Operate their vehicles in a safe and professional manner, with consideration for all other road users.
- Hold a current Australian State or Territory issued driver's licence.
- Notify their employer or operator immediately should the status or conditions of their driver's license change in any way.
- Comply with other applicable workplace policies, including a zero tolerance of driving while under the influence of alcohol and/or illicit drugs.
- Not use mobile phones when driving a vehicle or operating equipment. If the use of a mobile device is required, the driver shall pull over in a safe and legal location prior to the use of any mobile device.
- Advise management of any situations in which you know, or think may, present a threat to workplace health and safety.

- Drive according to prevailing conditions (such as during inclement weather) and reduce speed, if necessary.
- Have necessary identification documentation at hand and ready to present to security staff on entry and departure from the site, as necessary, to avoid unnecessary delays to other vehicles.

Crash or incident Procedure

- Stop your vehicle as close to it as possible to the scene, making sure you are not hindering traffic. Ensure your own safety first, then help any injured people and seek assistance immediately if required.
- Ensure the following information is noted:
 - Details of the other vehicles and registration numbers
 - Names and addresses of the other vehicle drivers
 - Names and addresses of witnesses
 - Insurers details
- Give the following information to the involved parties:
 - Name, address and company details
- If the damaged vehicle is not occupied, provide a note with your contact details for the owner to contact the company.
- Ensure that the police are contacted should the following circumstances occur:
 - If there is a disagreement over the cause of the crash.
 - If there are injuries.
 - If you damage property other than your own.
- As soon as reasonably practical, report all details gathered to your manager.

Appendix B. Travel Access Guide



Police Citizens Youth Club (PCYC) – Port Macquarie

Transport Access Guide

10/11/2023

Project overview

Police Citizens Youth Club (PCYC) is committed to providing patrons with safe, easy and sustainable ways of getting to and from PCYC. The options below include walking, cycling, catching public transport or by car.

Active ways to get to PCYC



Walking to PCYC

Patrons living around Port Macquarie could walk to PCYC in 15 minutes or less, saving the need for travelling by car.

The map over the page shows safe and accessible walking trails for patrons to travel to and from home and PCYC. Pedestrian footpaths are available on both sides of Owen Street between Burrawan Street and William Street. There are also some footpath sections on Burrawan Street, Gordon Street, Church Street and William Street.

Pedestrian refuges are located at Owen Street to the south of the intersection with Gordon Street, midblock between Gordon Street and Burrawan Street, and north of the intersection with Burrawan Street.

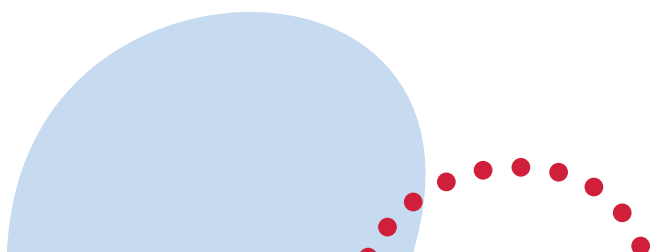


Cycling to PCYC

Patrons who live approximately 3km from PCYC, have the option of cycling to PCYC. Patrons may ride on Home Street, Lord Street and Gordon Street.

A shared path is also provided on Mallawa Crescent while a bicycle lane is provided on Pacific Drive and William Street.

Patrons can then secure their bicycle at the bicycle parking spaces which is at the main entrance of PCYC.



Public Transport



There are public bus services available to patrons that are within walking distance of PCYC and within the broader

regional area. See overleaf for details of the bus routes, including additional services which run outside of the road network peak periods.

More details of public bus services available for PCYC during the morning and afternoon are detailed on the Busways website at

<https://www.busways.com.au/nsw> and the Transport

[NSW Trip Planner website:](#)

<https://transportnsw.info/trip#/trip>.



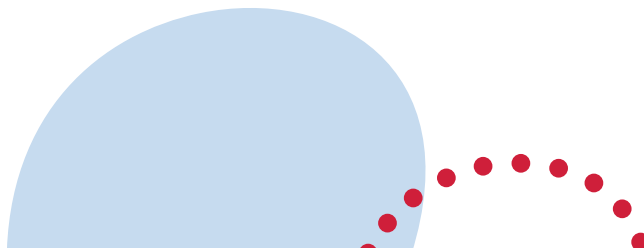
Car

The surrounding road network consists of on-street parking which could be utilised by patrons. PCYC also provides 19 car spaces (inclusive of 2 accessible spaces) and 2 minibus


spaces for staff and authorised people to utilise. The car park can be accessed from Owen Street.

Public Bus Services


ROUTE	DESCRIPTION	SERVICES
322	Lighthouse Plaza to Port Macquarie via Pacific Dr	1 service in the AM road network peak hour peak 1 service in the PM road network peak hour peak
322	Port Macquarie to Lighthouse Plaza via Pacific Dr	1 service in the AM road network peak hour peak 1 service in the PM road network peak hour peak
323	Port Macquarie to Lighthouse Beach (Loop Service)	Does not operate during AM and PM road network peak hours.




Active Transport

10min.  Walking Routes (minutes)

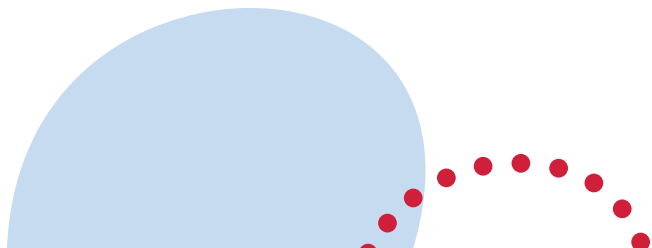
Cycling Paths

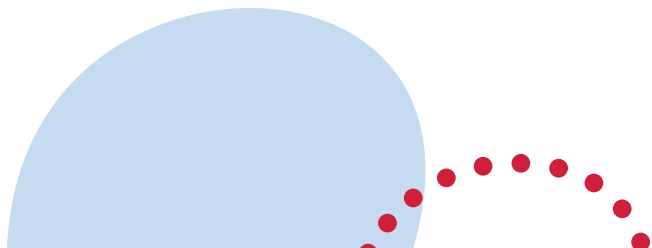
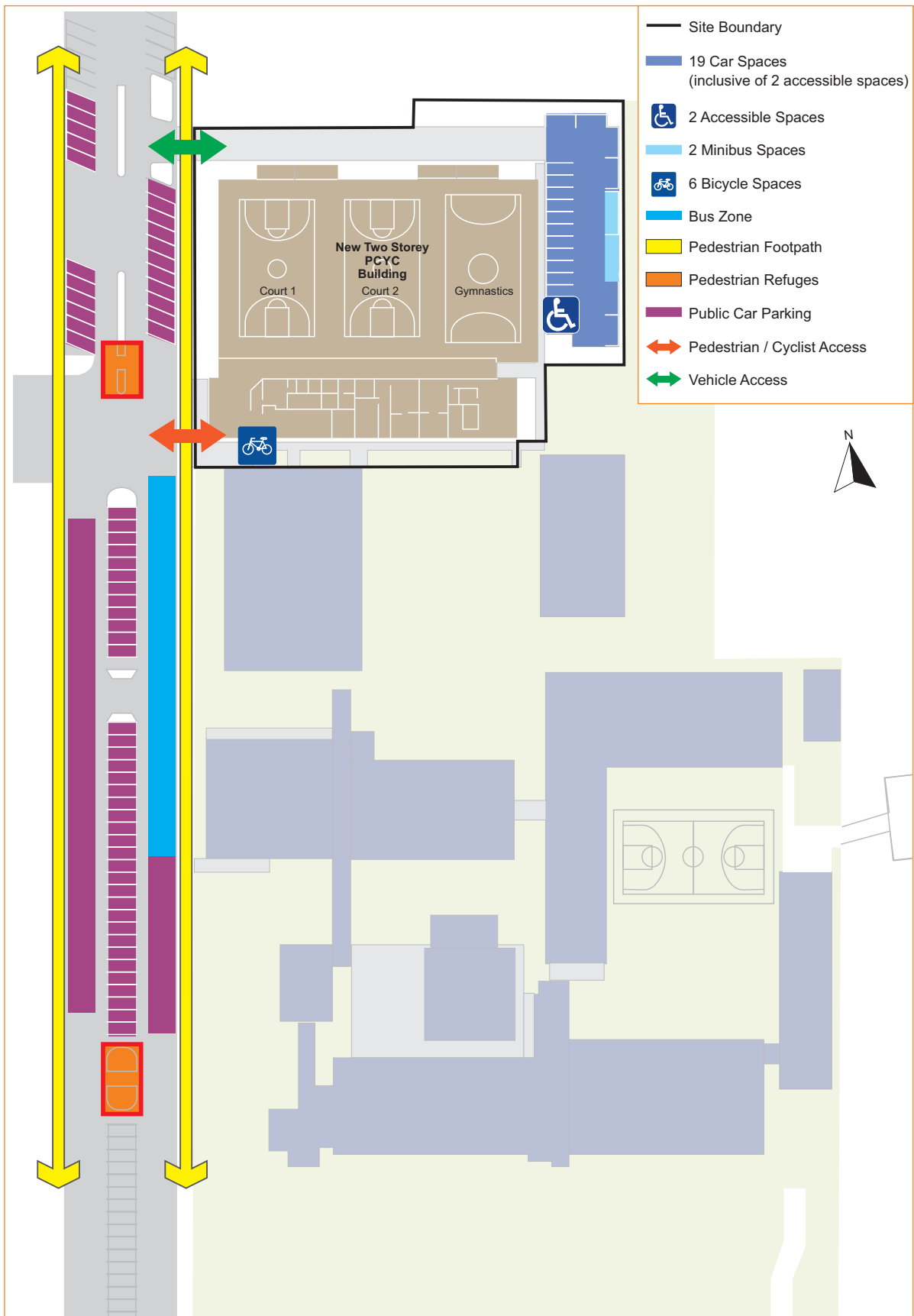
 Existing Shared Paths

 Proposed Shared Paths

Bus Routes (refer tables)

 **322** Public Bus Routes with Route Number





Appendix C. TfNSW Consultation

Jasmine Wong

From: MCILVEEN, Craig <cmcilveen@awedwards.com.au>
Sent: Tuesday, 6 February 2024 11:53 AM
To: Emily Duan; Alexandra.Fearnley@rpsgroup.com.au; Jasmine Wong
Cc: Ali Rasouli; James Laidler; Arun Mohan; Jasmine Wong; Nathan Muggleton;
KAMPMANN, Pia; CRAIG, Louis; WALKER, Nathaniel
Subject: RE: PCYC Operations Plan (DRAFT) - P1600Ar01

Hi Emily, Jasmine,

Further to the below consultation with council. I can confirm we will be closing the consultation period with Transport for NSW today with no comments received. Could I please ask the PCYC operational plan be amended as final.

Grateful if I could receive by this Friday the 9th. Thanks

Regards,

Kind regards,

Craig McIlveen
Project Manager

A W Edwards Pty Limited
Port Macquarie Office
7/35 Merrigal Rd, Port Macquarie NSW 2444
M: 0403 611 161 E: cmcilveen@awedwards.com.au
www.awedwards.com.au

AW EDWARDS



AW EDWARDS acknowledges Traditional Owners of Country throughout Australia and recognises the continuing connection to lands, waters and communities. We pay our respect to Aboriginal and Torres Strait Islander cultures and to Elders past and present.

"COMMUNITY" Artwork by Raechel Saunders

From: MCILVEEN, Craig <cmcilveen@awedwards.com.au>
Sent: Thursday, January 11, 2024 3:54 PM
To: Emily Duan <emily.duan@asongroup.com.au>; Alexandra.Fearnley@rpsgroup.com.au; Jasmine Wong <jasmine.wong@asongroup.com.au>
Cc: Ali Rasouli <ali.rasouli@asongroup.com.au>; James Laidler <james.laidler@asongroup.com.au>; Arun Mohan <arun.mohan@asongroup.com.au>; Jasmine Wong <jasmine.wong@asongroup.com.au>; Nathan Muggleton <Nathan.Muggleton@rpsgroup.com.au>
Subject: RE: PCYC Operations Plan (DRAFT) - P1600Ar01

Hi Jasmine,

Please find attached endorsement from Hastings Council for the PCYC Operations Plan.

Kind regards,

Craig McIlveen

Project Manager

A W Edwards Pty Limited

Port Macquarie Office

7/35 Merrigal Rd, Port Macquarie NSW 2444

M: 0403 611 161 E: cmcilveen@awedwards.com.au

www.awedwards.com.au

A W EDWARDS



A W EDWARDS acknowledges Traditional Owners of Country throughout Australia and recognises the continuing connection to lands, waters and communities. We pay our respect to Aboriginal and Torres Strait Islander cultures and to Elders past and present.

"COMMUNITY" Artwork by Raechel Saunders

From: Emily Duan <emily.duan@asongroup.com.au>

Sent: Monday, October 30, 2023 4:50 PM

To: Alexandra.Fearnley@rpsgroup.com.au; MCILVEEN, Craig <cmcilveen@awedwards.com.au>

Cc: Ali Rasouli <ali.rasouli@asongroup.com.au>; James Laidler <james.laidler@asongroup.com.au>; Arun Mohan <arun.mohan@asongroup.com.au>; Jasmine Wong <jasmine.wong@asongroup.com.au>

Subject: PCYC Operations Plan (DRAFT) - P1600Ar01

Hi Alexandra, Hi Craig,

Jasmine is on leave for 2 weeks, therefore, I am sending you the draft PCYC Operations Plan (P1600Ar01) for your review and comments. Please find it in the attachment.

Should you have any questions, please let us know.

Kind Regards,

Emily Duan

MS. Transport Eng.

Traffic Engineer | Ason Group

T: +61 2 9083 6601 | M: +61 421 619 518 | E: emily.duan@asongroup.com.au

A: Suite 17.02, Level 17, 1 Castlereagh Street, Sydney NSW 2000

Les donnees et renseignements contenus dans ce message sont personnels, confidentiels et secrets. Toute publication, utilisation ou diffusion, meme partielle, doit etre autorisee. Si vous n'etes pas le bon destinataire, nous vous demandons de ne pas lire, copier, utiliser ou divulguer cette communication. Nous vous prions de notifier cette erreur a l'expediteur et d'effacer immediatement cette communication de votre systeme.

Any data and information contained in this electronic mail is personal, confidential and secret. Any total or partial publication, use or distribution must be authorized. If you are not the right addressee, we ask you not to read, copy,

use or disclose this communication. Please notify this error to the sender and erase at once this communication from your system.

Appendix D. Council Consultation

MCILVEEN, Craig

From: Mick Jones <Mick.Jones@pmhc.nsw.gov.au>
Sent: Thursday, 11 January 2024 3:33 PM
To: MCILVEEN, Craig
Cc: CRAIG, Louis
Subject: RE: Hastings PCYC - Operations Plan

Hi Craig,

To be honest we weren't really too sure who at PMHC should be commenting on this document. I asked our Development Planning Coordinator, Pat Galbraith-Robertson to consider the document. Pat was involved in coordinating the draft DA conditions considered required by PMHC, and he provided the below response to me:

I have reviewed the Operations Plan and provide no objections to what is proposed particularly noting compliance with approved trading hours and recognition of already approved parking arrangements.

I have no further comments to add myself. I believe you can consider condition D22 met.

Regards,

Mick Jones
Development Engineer
Community Planning & Environment



p (02) 6581 8652

From: MCILVEEN, Craig <cmcilveen@awedwards.com.au>
Sent: Tuesday, 19 December 2023 11:45 AM
To: Grant Burge <grant.burge@pmhc.nsw.gov.au>; Mick Jones <Mick.Jones@pmhc.nsw.gov.au>
Cc: CRAIG, Louis <lcraig@awedwards.com.au>
Subject: Hastings PCYC - Operations Plan

Hi Grant, Mick

Hope you both keeping well.

I am writing regarding Hastings PCYC (SSD 11920082) Condition D22. The project is required to prepare a PCYC Operation Plan, it is requested for this to be developed in consultation with Council.

Grateful if you could please review and provide comment (if required) by Friday the 19th of January. Alternatively, if you are not the best contact in council, it would be appreciated if you could forward onto the relevant contact in council.

I have attached the draft plan prepared by Traffic Consultant Ason Group. Additionally, please refer to the below condition.

PCYC Operations Plan

- D22. Prior to the commencement of operation of the PCYC, a PCYC Operations Plan must be submitted to the Certifier. The plan must:
- (a) be prepared by a suitably qualified consultant in consultation with Council, TfNSW and Hastings Secondary College;
 - (b) detail proposed operations including:
 - (i) hours of operation;
 - (ii) expected staff and volunteer attendance levels;
 - (iii) schedule of use and intended group activities;
 - (c) include arrangements to promote the use of active and sustainable transport modes and reduce demand for parking, particularly during peak school operations, including:
 - (i) objectives and mode share targets (i.e. site and land use specific, measurable and achievable and timeframes for implementation);
 - (ii) specific tools and actions to help achieve the objectives and mode share targets;
 - (iii) details regarding the methodology and monitoring/review program to measure the effectiveness of the objectives and mode share targets, including the frequency of monitoring and the requirement for travel surveys to identify travel behaviours of users of the development.
 - (d) include operational transport access management arrangements, including:
 - (i) the location of all car parking spaces on the site and their allocation (i.e. staff, visitor, accessible, emergency, etc.);
 - (ii) delivery and service vehicle and bus access and management arrangements;
 - (iii) management of approved access arrangements;
 - (iv) potential traffic impacts on surrounding road networks and mitigation measures to minimise impacts, including measures to minimise impacts during school hours;
 - (e) measures to promote and support the implementation of the plan, including financial and human resource requirements, roles and responsibilities for relevant employees involved in the implementation of the plan; and
 - (f) a monitoring and review program.

Have a Merry Christmas. Talk in the New Year..

Kind regards,

Craig McIlveen
Project Manager

A W Edwards Pty Limited
Port Macquarie Office
7/35 Merrigal Rd, Port Macquarie NSW 2444
M: 0403 611 161 E: cmcilveen@awedwards.com.au
www.awedwards.com.au

AW EDWARDS



AW EDWARDS acknowledges Traditional Owners of Country throughout Australia and recognises the continuing connection to lands, waters and communities. We pay our respect to Aboriginal and Torres Strait Islander cultures and to Elders past and present.

"COMMUNITY" Artwork by Raechel Saunders

Les données et renseignements contenus dans ce message sont personnels, confidentiels et secrets. Toute publication, utilisation ou diffusion, même partielle, doit être autorisée. Si vous n'êtes pas le bon destinataire, nous vous demandons de ne pas lire, copier, utiliser ou divulguer cette communication. Nous vous prions de notifier cette erreur à l'expéditeur et d'effacer immédiatement cette communication de votre système.

Any data and information contained in this electronic mail is personal, confidential and secret. Any total or partial publication, use or distribution must be authorized. If you are not the right addressee, we ask you not to read, copy, use or disclose this communication. Please notify this error to the sender and erase at once this communication from your system.

We acknowledge the Birpai people, the traditional owners of the land in which we work and live, and pay our respects to Elders past, present and emerging. We extend our respect to all Aboriginal and Torres Strait Islander people who choose to call Port Macquarie-Hastings home.

DISCLAIMER - This electronic mail message is intended only for the addressee and may contain confidential information. If you are not the addressee, you are notified that any transmission, distribution or photocopying of this email is strictly prohibited. The confidentiality attached to this email is not waived, lost or destroyed by reasons of a mistaken delivery to you. The information contained in this email transmission may also be subject to the Government Information (Public Access) Act, 2009.
