

Hastings Secondary College upgrade

Information pack | October 2022



Artist impression of new entry at Port Macquarie Campus

The NSW Government is investing \$8.6 billion in school infrastructure over the next four years, continuing its program to deliver 160 new and upgraded schools to support communities across NSW. This builds on the more than \$9.1 billion invested in projects delivered since 2017, a program of \$17.7 billion in public education infrastructure.

The NSW Department of Education is committed to delivering new and upgraded schools for communities across NSW. The delivery of these important projects is essential to the future learning needs of our students and supports growth in the local economy.

We are upgrading Hastings Secondary College to support the student community at both campuses. The upgrade will deliver:

Port Macquarie Campus



14 new or upgraded flexible learning spaces



5 supported learning spaces



New Technological and Applied Sciences (TAS) facilities



New Creative and Performing Arts (CAPA) building



Increased student accessibility with 3 lifts installed



Redeveloped school entry



A shared use, multi-sports facility (in partnership with PCYC NSW)

Westport Campus



Relocated and upgraded administration office



3 flexible learning spaces



Redeveloped school entry



Update on project timeline

Construction on the Hastings Secondary College upgrade at both campuses is well underway and construction of the new shared use multisports facility at Port Macquarie Campus will be starting soon.

Construction of the Hastings Secondary College upgrade has been impacted by several factors including COVID-19 supply shortages, flood impacts, poor weather and unexpected site conditions. These have unfortunately led to increased times for the supply of building materials and a shortage of construction trades in the local area. Revised dates for construction completion for each of the stages of the projects can be viewed in the maps below.

The upgrade to Hastings Secondary College is being staged to ensure the schools remain operational during construction and to minimise disruption to learning. Buildings will be handed over progressively for the school to use when they are complete. See below for an update on progress and when construction is anticipated to be completed for each stage.

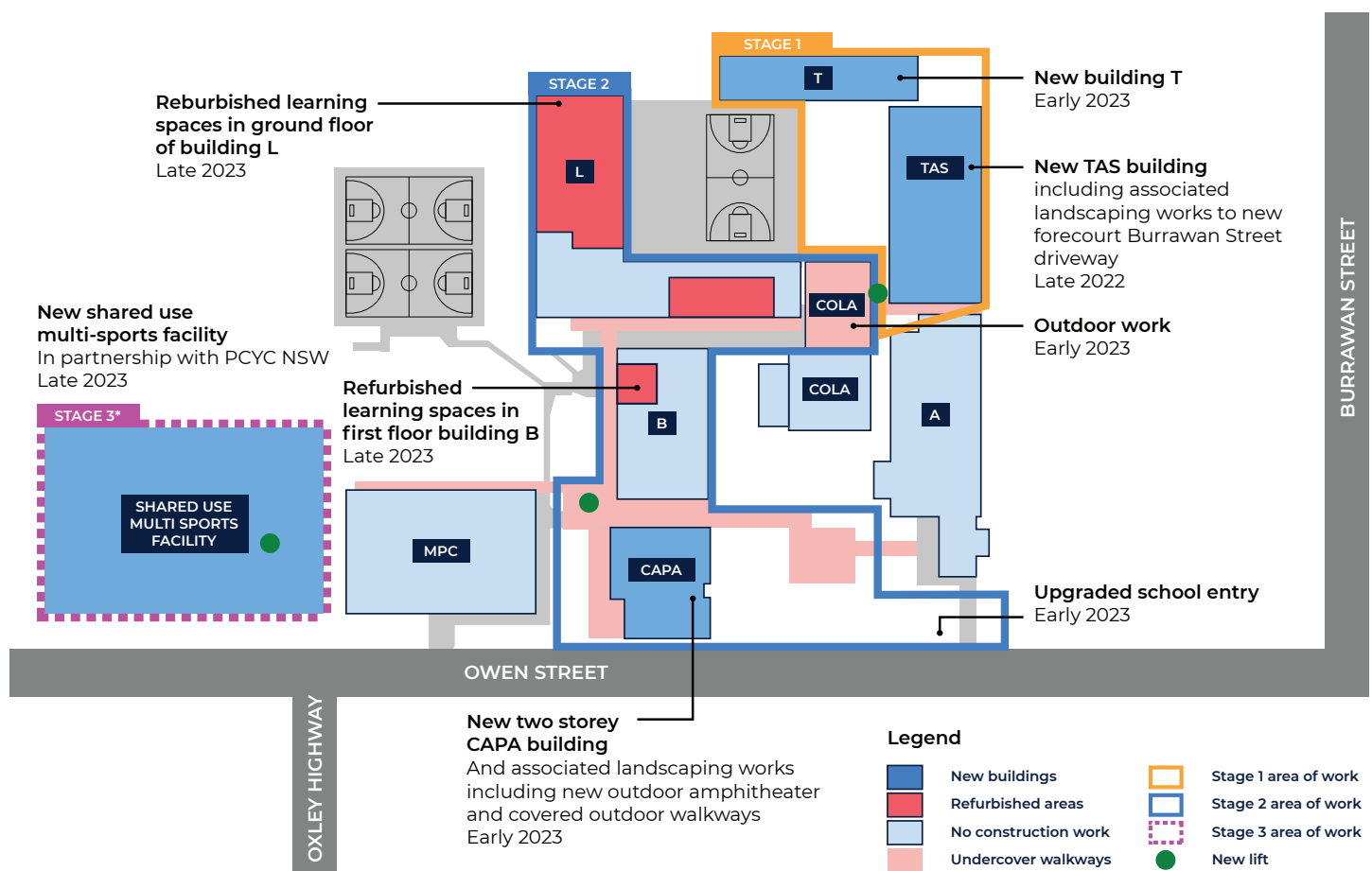
Port Macquarie Campus

Stage 1 and Stage 2

The first stage of the upgrade at Port Macquarie is construction of a new Technical and Applied Sciences (TAS) building, reconstruction of Building T and increased open landscaped areas with accessibility to areas within campus. This stage is well underway, with construction on the new TAS building almost complete.

Due to pre-existing structural damage to Building T uncovered during works, the school will now receive a new building in its place. The project team are working on the final designs for the new building. Demolition of the existing building will take place later this year.

Stage 2 includes the new Creative and Performing Arts (CAPA) building, refurbishment of Blocks L and B, external works, and a new school entrance. There are ongoing civil works taking place for the CAPA building, including installation of in-ground services.



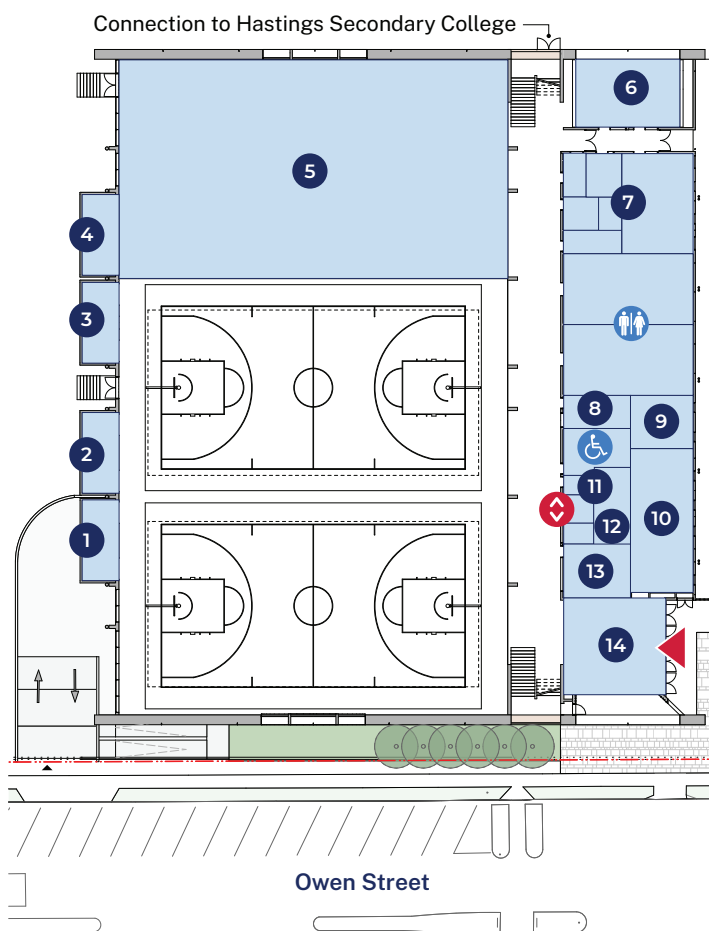
Stage 3

Stage 3 is a new shared use multi-sports facility in partnership with Police Citizens Youth Clubs NSW (PCYC). The shared use multi-sports facility will include 2 multi-purpose sports courts, gymnastics facilities, mezzanine level with multipurpose rooms and gym and PCYC Police office, youth hub, admin, staff, and kitchen facilities. The facility will also include Clontarf Academy, with meeting and kitchen facilities and below ground car parking.

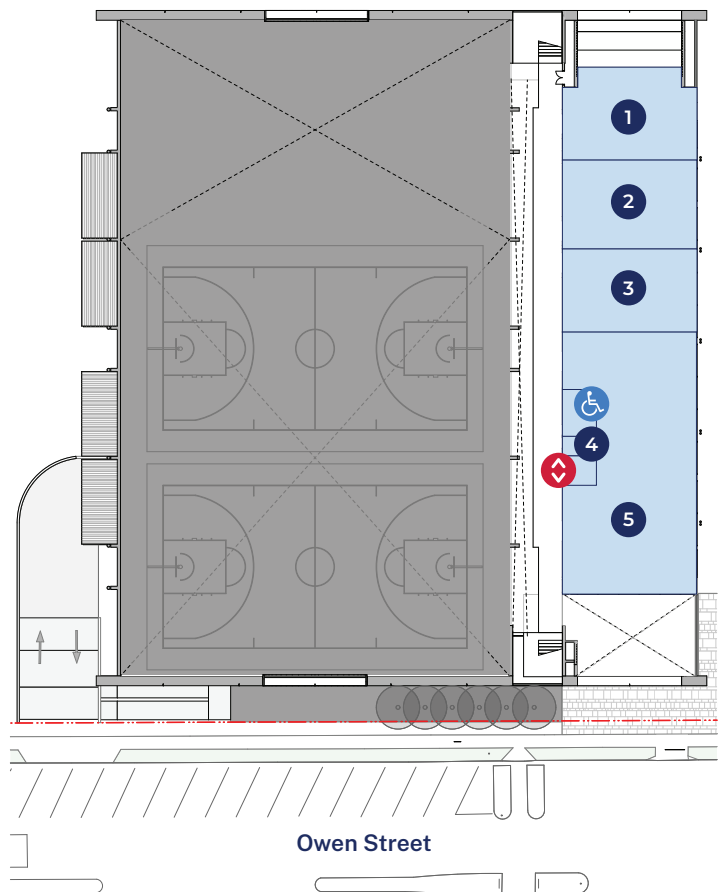
The project timeline for Stage 3 has been extended due to the tender process to appoint contractors for this facility. This is the process by which contractors and suppliers provides costs for the scope of works, based on the proposed design. This process was extended to complete a review of the scope and design to ensure the project secured the best value for money.

The below map shows how the facility is expected to be designed.

Ground Floor



First Floor



- | | |
|----------------------|-------------------------|
| 1. School storage | 10. Youth Hub |
| 2. PCYC storage | 11. Cleaning storage |
| 3. PCYC storage | 12. PCYC kitchen |
| 4. Gymnasium storage | 13. PCYC administration |
| 5. Gymnasium | 14. PCYC foyer |
| 6. Meeting rooms | 15. Amenities |
| 7. Clontarf Academy | 16. Accessible toilet |
| 8. Staff changerooms | 17. Lift |
| 9. Police office | 18. Main entry |

- | |
|-------------------------|
| 1. Multi-purpose room 1 |
| 2. Multi-purpose room 2 |
| 3. Multi-purpose room 2 |
| 4. Cleaning storage |
| 5. Gym |
| 6. Accessible toilet |
| 7. Lift |

Westport Campus

Stage 1

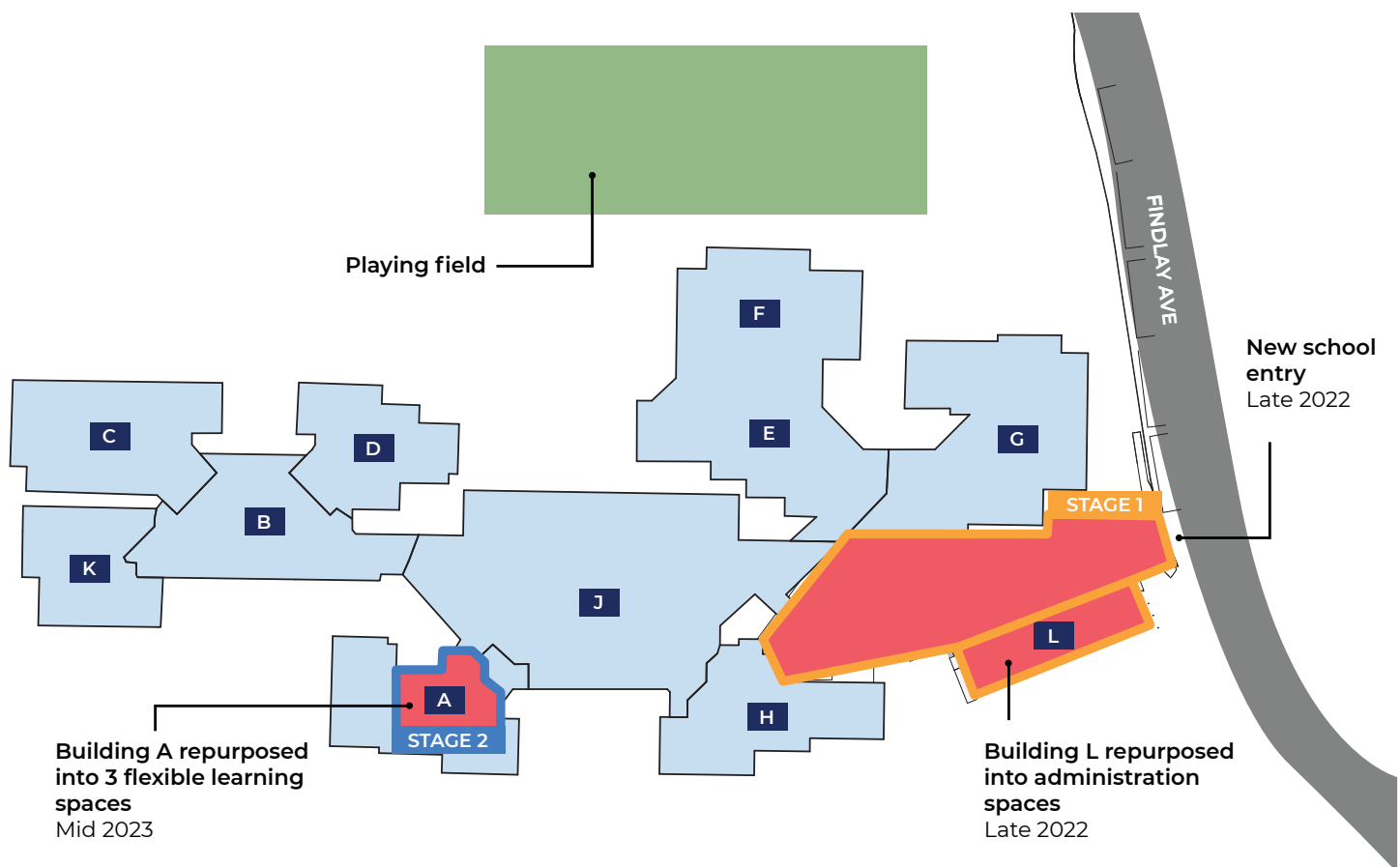
The first stage of the upgrade at Westport Campus will include refurbishment of Building L into a new administration facility at the front of the school.

Internal works on Stage 1 are progressing well including installing services. External works are in progress including the upgraded school entry, covered walkways and landscaping.

Stage 2

Stage 2 of the upgrade will deliver refurbishment of Building A into 2 general learning spaces, 1 shared learning area and 1 seminar room.

Once Stage 1 has finished, the administration staff will move buildings to enable to contractor to start Stage 2 works.





Aerial view of Hastings Secondary College



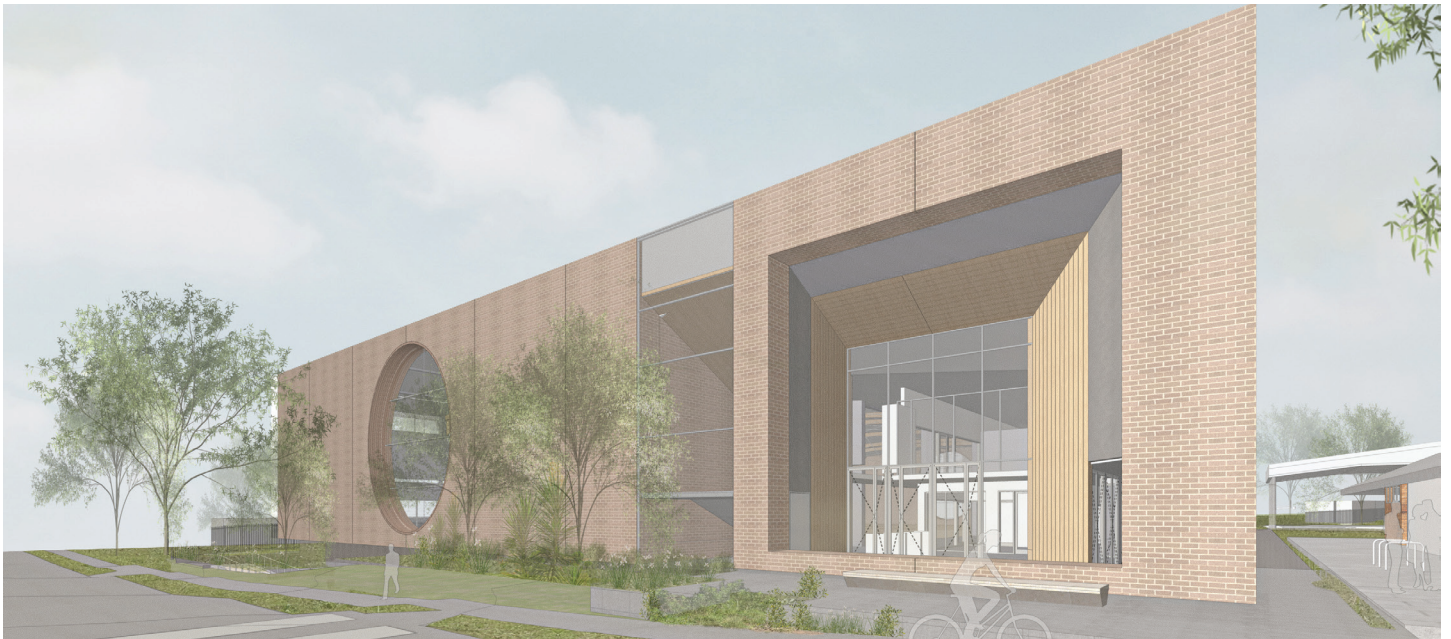
Artist impression of new entry at Port Macquarie Campus



Artist impression of the CAPA building, Port Macquarie Campus



Artist impression of the new TAS building, Port Macquarie Campus



Artist impression of the new multi-sports facility, Port Macquarie Campus



Artist impression of the new multi-sports facility, Port Macquarie Campus

What are the next steps?

- Finalise detailed design of Stage 3 for Port Macquarie Campus.
- Establish the construction site for Stage 3 and start construction.
- Construction on the new TAS building at Port Macquarie Campus is anticipated to be finished in late 2022.
- Start the structural works for the new CAPA building at the Port Macquarie Campus.
- Completion of fit-out works at Building L at Westport Campus, including joinery, painting and installation of communications equipment.

We will continue to provide regular project updates and works notifications to the community as construction for the upgrades progresses.

Message from the Principal

Hastings Secondary College wishes to thank the school and broader community for both their patience and cooperation as we undertake these exciting infrastructure improvements. These improvements will not only directly benefit the future focused learning needs of our students but will also enable an exciting partnership with PCYC in empowering young people in our community to meet their potential.

Meaghan Cook
Hastings College Principal

Stay informed



Website

Stay up to date by visiting the
School Infrastructure NSW website
schoolinfrastructure.nsw.gov.au



Email

Contact the Community Engagement
team by emailing
schoolinfrastructure@det.nsw.edu.au



Phone

Contact us between 9:00am and 5:00pm,
Monday to Friday on **1300 482 651**