



Exterior Image

# Gulyangarri Public School

Welcome Pack | February 2024

## Welcome to your new school

We are excited the new Gulyangarri Public School is complete and ready for students and staff to use. The new facilities include:



**20** classrooms



**4** special education classrooms



**4** special programs rooms



A hall, library and covered outdoor learning area (COLA)

We are delighted to deliver this new school for the Liverpool community and hope you enjoy your new spaces.

The NSW Government has committed to building 100 new public preschools, including at Gulyangarri Public School, to boost access to preschool across the state.

It is anticipated the new preschool will be the first of the 100 public preschools to open, pending building and regulatory approvals. The preschool will be situated in Building Y on the western side of the site and include two rooms. More details about the operation of the preschool, including how to enrol, will be shared as they become available.

# Message from your Principal

Welcome to Gulyangarri Public School.

It is an honour to be the foundation principal for Gulyangarri Public School. The Gulyangarri Team and I have been busy behind the scenes laying the groundwork that will enable our school to shine as a place of learning excellence in the community. We are excited by the opportunities that lie ahead.

Our new school features modern, purpose-built facilities that support quality teaching and learning. We believe that education is the key to opportunity in life and are committed to partnering with our community to create a school where all students are challenged to excel in a nurturing and inclusive environment.

As we begin this exciting adventure together, I invite you to actively engage in the life of our school and your child's educational journey. We understand the importance of collaboration between home and school, and we encourage open communication to ensure the success and wellbeing of every child. I am confident that with your support, dedication, and our collective commitment to excellence, Gulyangarri Public School will ignite a love of learning in all children and set them up for future success.

I look forward to welcoming students and their families into our new school.

## Ian Tapuska

School Principal

Gulyangarri Public School



## Our school's story

Gulyangarri Public School draws its name from the Darug language spoken by the Cabrogal Clan. The word *gulyangarri* translates to *children* in English. The logo was chosen to reflect the importance of children being at the centre of all that we do.

The logo's building blocks are based on the core values and represent being ambitious, courageous, kind and safe.

### School motto

Opening the door  
to possibility

### School logo



Gulyangarri  
Public School

### Logo meaning:



The arch border symbolises the entrance to the school.



The target symbolises ambition.



The shield symbolises courage.



The dots symbolise kindness.



The pathway symbolises safety.

# Our record investment

As part of the NSW Government's plan to rebuild essential services, the 2023-24 Budget is delivering a record \$8.8 billion for new and upgraded schools. This targeted investment in growing communities will ensure working families get access to a world class public education.

In addition to Gulyangarri Public School, we are delivering major upgrades at Liverpool West Public School, Liverpool Boys and Girls High Schools, Cecil Hills and Condell Park High Schools.

## Modern Classrooms

Our school features new flexible classrooms. These classrooms offer our teachers flexibility in teaching methods and provide a variety of opportunities to enhance student collaboration, communication and engagement.

The classrooms:

- are adaptable and can accommodate up to four class groups in each space
- feature inclusive learning zones with break-out spaces, enabling students to learn in new ways and with new technologies
- provide opportunities to enhance skills in collaboration, communication, critical thinking, problem solving and creativity
- can be closed into individual classrooms.



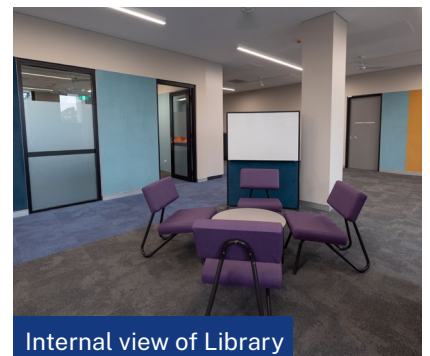
New modern classrooms



Special education classroom



Special program room



Internal view of Library

## Site map



### LEGEND

- Library, administration, staff facilities and classrooms
- Hall and canteen
- Staff parking
- Bike parking
- Kiss & drop
- Support learning Play space
- Covered outdoor Learning area
- Productive garden
- Yarning circle
- Nature play
- Sports court
- Sports field
- Pedestrian access
- Vehicle access



## Frequently asked questions

### Does the school have before and after care services?

Yes, 3Bridges is providing out of school hours care (OOSHC). To enrol, please visit **3Bridges** website.

Operating Hours for the Before School Care are 6.30 am to 8.30 am, Monday to Friday and for the After School Care are 2.30 pm to 6.30 pm, Monday - Friday.

### Can I still enrol my child?

Gulyangarri Public School is open for enrolments. To enrol, visit this link <https://ehub.enrol.education.nsw.gov.au/schoolenrolment/?schoolCode=4687> or scan the QR code.



To check your school intake area, visit School Finder at <https://schoolfinder.education.nsw.gov.au>.

### When will the preschool open?

The preschool is anticipated to open in mid-2024, pending funding and regulatory approvals. Further details, including how to enrol, will be provided as they become available.

### How many children will the preschool accommodate?

Pending regulatory and building approvals, the new preschool at Gulyangarri PS will accommodate up to 40 children per day, equivalent to 80 children across the week.

## Contact us

For information about school activities and operations, contact the school directly:

**Principal:** Ian Tapuska

**Website:** [gulyangarri-p.schools.nsw.gov.au](https://gulyangarri-p.schools.nsw.gov.au)

**Email:** [gulyan-p.school@det.nsw.edu.au](mailto:gulyan-p.school@det.nsw.edu.au)

**Phone:** 02 8777 6500

**Address:** 18 Forbes Street, Liverpool NSW 2170

### At what age can children attend Gulyangarri preschool?

Children can enrol in preschool from the beginning of the school year if they turn 4 years of age on or before 31 July that year.

Department preschools enrol children for one year only, the year before they start school.

### How can families enrol children at the preschool?

The enrolment process for Gulyangarri Public School Preschool is being set up and the school will be able to provide more information as it becomes available.

Information about the established enrolment process for the existing department preschools is available on the NSW Department of Education website.

### Will the preschool prioritise enrolment?

Enrolment priority for department preschools is given to:

- Aboriginal or Torres Strait Islander children
- children living in low socioeconomic circumstances
- children unable to access other early childhood services due to disadvantage or financial hardship.

The principal will offer enrolment in the following order (after the above priorities):

1. children living within the school's enrolment intake area
2. children living outside the school's intake area and who have siblings enrolled in the school
3. children living outside the school's enrolment intake area.

For more information about this project, contact School Infrastructure NSW:

**Website:** [schoolinfrastructure.nsw.gov.au](https://schoolinfrastructure.nsw.gov.au)

**Email:** [schoolinfrastructure@det.nsw.edu.au](mailto:schoolinfrastructure@det.nsw.edu.au)

**Phone:** 1300 482 651