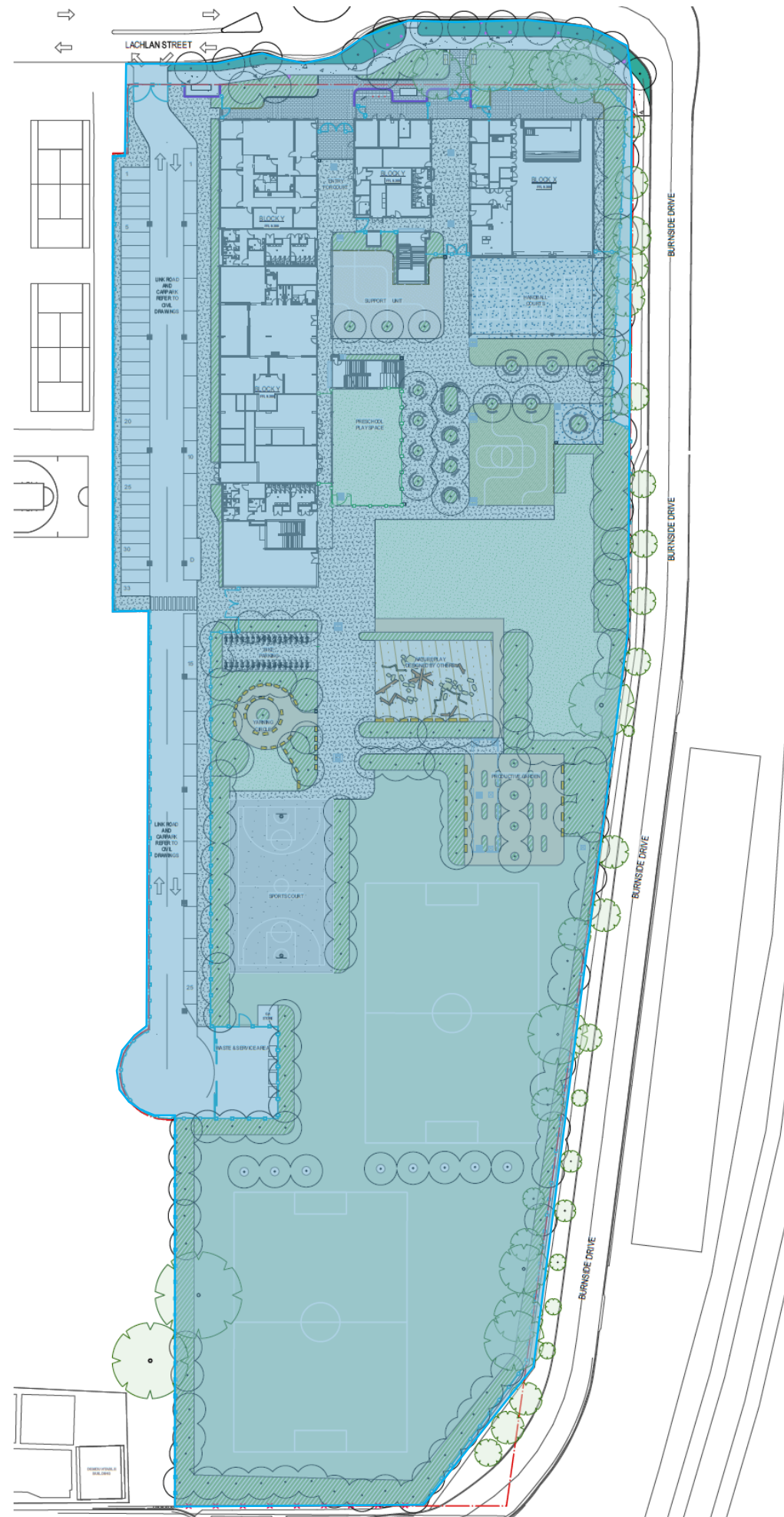


Phase A1

Commencement of
of Stage 1
construction

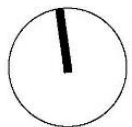


Note: Construction works and access arrangements to be in accordance with the Construction Environmental Management Plan (CEMP).

Note: See architectural and landscape plans for full layout details

Staging Plan – Phase A1
Revision B SINSW
19.06.2023

Not to Scale



Phase A2

Operation of Stage 1 works

Operation:
Building X

Operation:
Building Y
including Ground Floor SSU and
Preschool and associated play
area

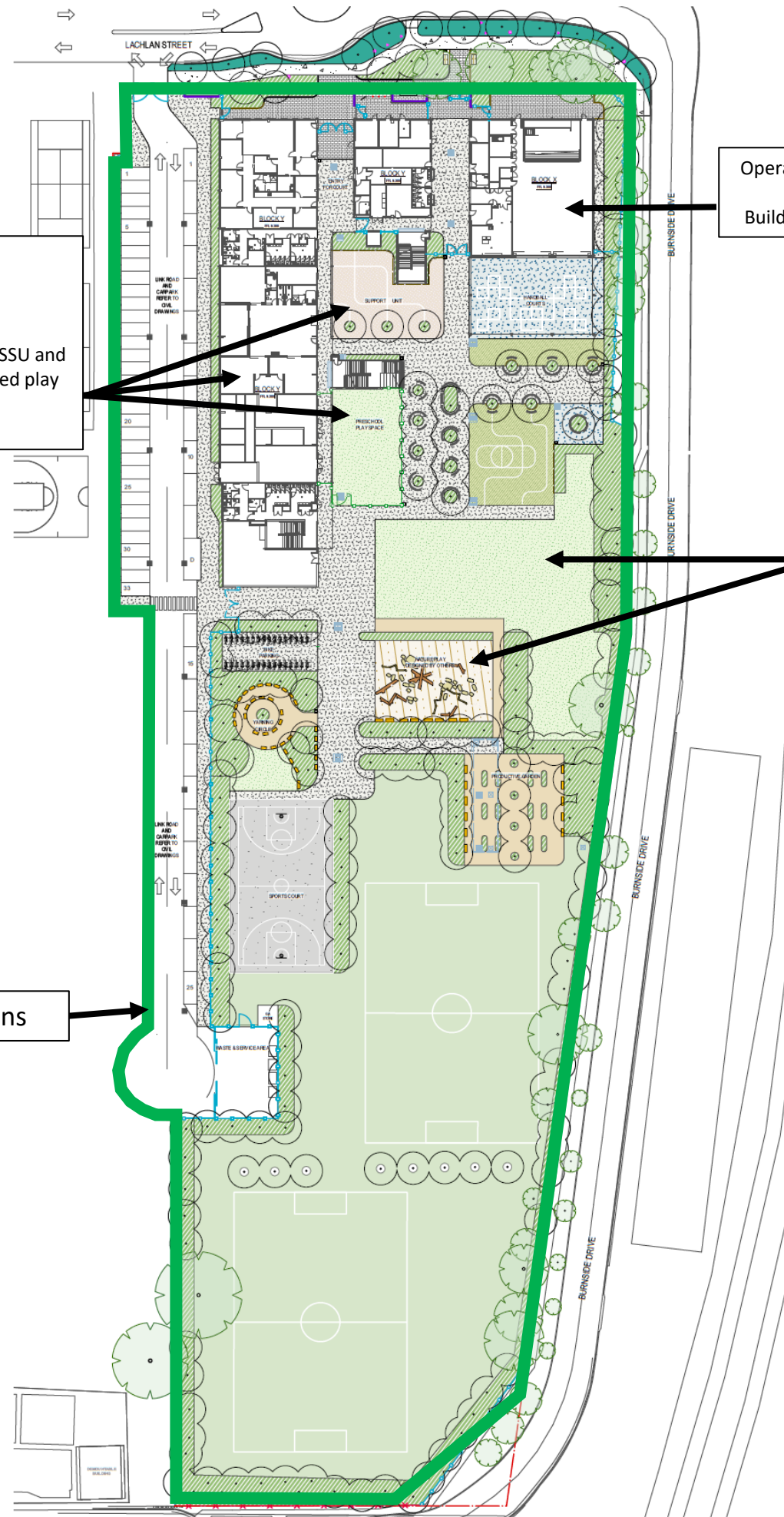
Interim landscape
treatment

School Operations

Staging Plan – Phase A2
Revision B SIN SW
19.06.2023

Not to Scale

Note: See architectural and landscape plans for full layout details



Phase B1

Commencement of
Stage 2
construction:

Building Z including
SSU, preschool and
associated play
areas

Construction:
Stage 2 - Building Z
including SSU,
Preschool and
associated
play area

Continued operation:
Building X

Continued operation:
Building Y including Ground
Floor SSU and Preschool
and associated play area

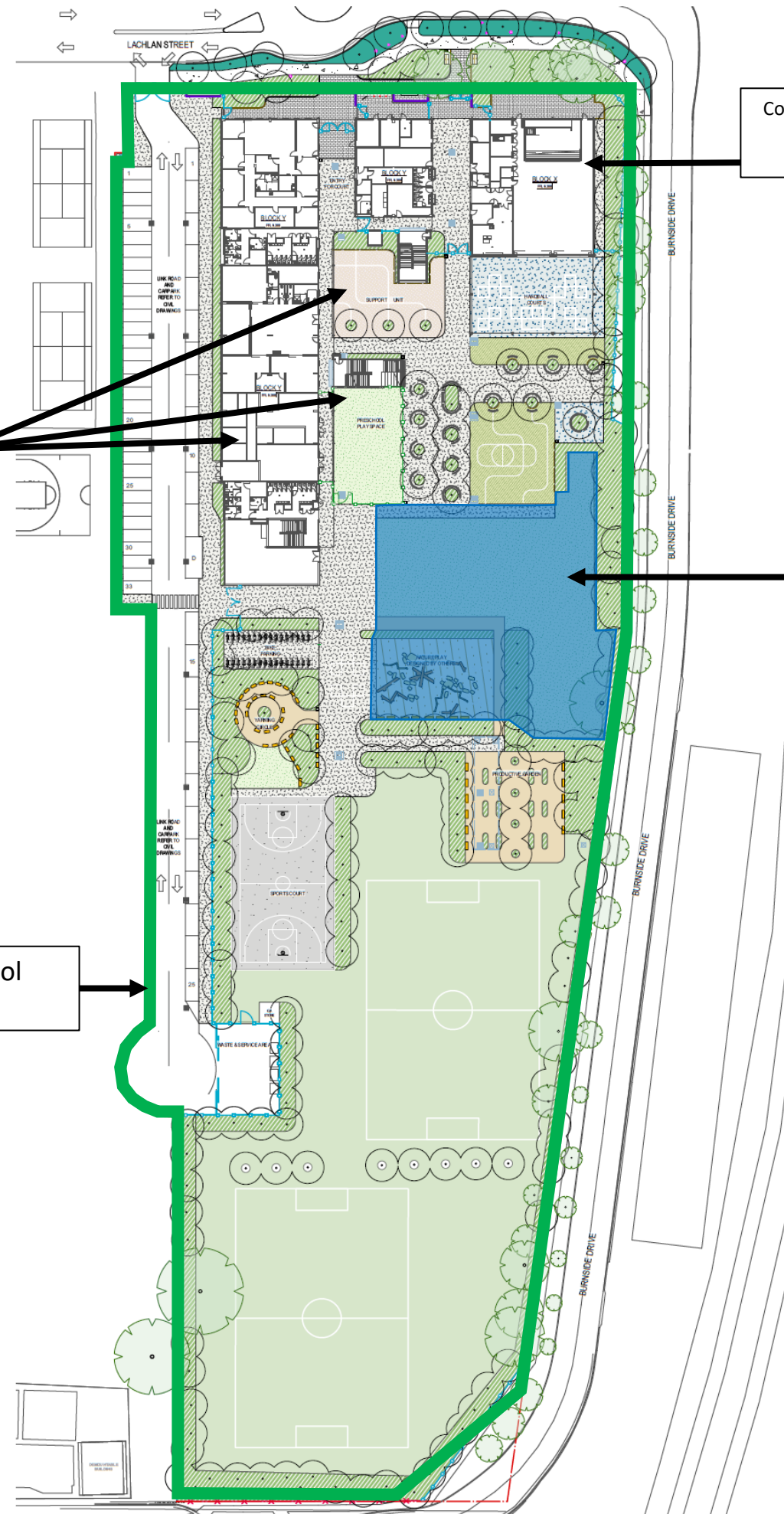
Ongoing School
Operations

Note – This plan shows the locations where Stage 2 works are proposed. The construction works zone and associated access arrangements will be confirmed through the Construction Environmental Management Plan (CEMP) submitted under Condition B28 prior to Stage 2 construction. Works will be designed and managed to facilitate ongoing safe and functional access for ongoing operational areas. Traffic and site supervision will be implemented where required.

Note: See architectural and landscape plans for full layout details

Staging Plan – Phase B1
Revision A SINSW
19.06.2023

Not to Scale



Phase B2

Operation of
Building Z and
continued Stage 2
construction:

Refurbishment of
Building Y and
associated play
areas

Continued operation:

Building X

Operation:

Building Z, including
relocated SSU, Preschool and
associated play area

Continued operation:

Building Y

Construction:

SSU play area removed and
Stage 2 landscaping installed

Construction
(Building Y Ground Floor):

SSU and preschool removed and
Stage 2 General Learning Spaces
installed

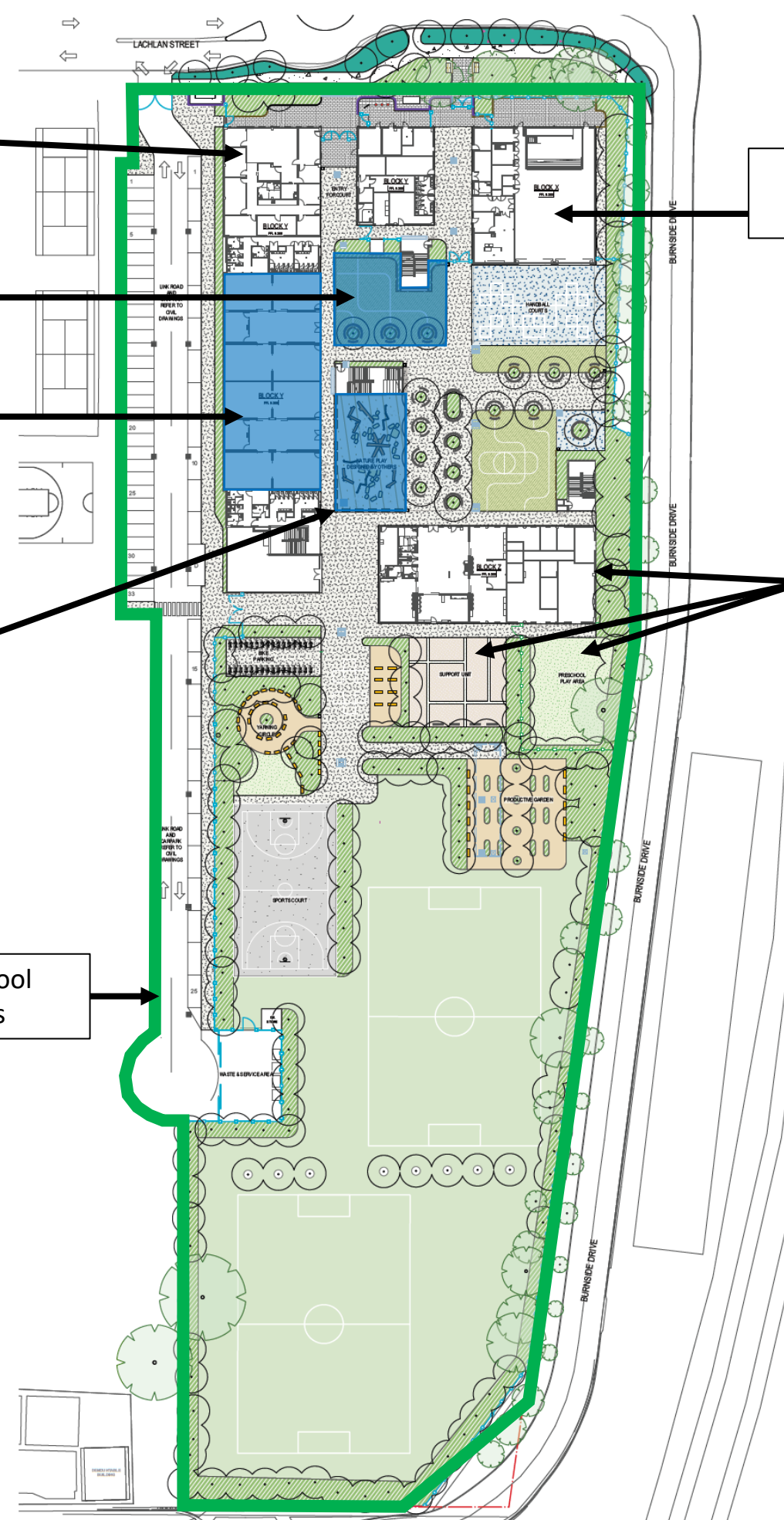
Construction:

Preschool play area removed
and Stage 2 nature play area
installed

Ongoing School
Operations

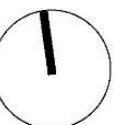
Note – This plan shows the locations where Stage 2 works are proposed. The construction works zone and associated access arrangements will be confirmed through the Construction Environmental Management Plan (CEMP) submitted under Condition B28 prior to Stage 2 construction. Works will be designed and managed to facilitate ongoing safe and functional access for ongoing operational areas. Traffic and site supervision will be implemented where required.

Note: See architectural and landscape plans for full layout details



Staging Plan – Phase B2
Revision A SINSW
19.06.2023

Not to Scale



Phase C

Completion of all
works and final
stage operation

School Operations

Staging Plan – Phase C
Revision B SINSW
19.06.2023

Not to Scale

Note: See architectural and landscape plans for full
layout details

