

NEW LIVERPOOL PRIMARY SCHOOL

SSDA MODIFICATION

STAGE 1

Drawing List

Sheet No.	Sheet Name	Rev. No.	Rev. Date
NLPS-ST1-LA-DRG-3600	SITE PLAN	2	19/10/2022
NLPS-ST1-LA-DRG-3601	LEGEND	2	19/10/2022
NLPS-ST1-LA-DRG-3610	GENERAL ARRANGEMENT PLAN	2	19/10/2022
NLPS-ST1-LA-DRG-3611	GENERAL ARRANGEMENT PLAN	2	19/10/2022
NLPS-ST1-LA-DRG-3620	UNENCUMBERED PLAY & TREE CANOPY	2	19/10/2022
NLPS-ST1-LA-DRG-3621	FENCING PLAN	2	19/10/2022
NLPS-ST1-LA-DRG-3630	PUBLIC DOMAIN PLAN	2	19/10/2022

PROJECT TEAM

ARCHITECT

NBRS ARCHITECTURE

4 Glen St, Milsons Point NSW 2061

02 9552 2344

PROJECT MANAGER

ADCO

Level 1, 7-9 West Street, North Sydney NSW 2060

02 8437 5000

CIVIL ENGINEER

Meinhardt Bonacci

Level 4, 66 Clarence St, Sydney NSW 2000

02 8207 8400

ISSUE	DATE	DESCRIPTION	BY	APPD
1	28/09/2022	ISSUE FOR COORDINATION (WIP ONLY)	SRS	MF
2	19/10/2022	SSDA MODIFICATION	SRS	MF

Landscape Architect

NBRS ARCHITECTURE.
LANDSCAPE

NBRS & PARTNERS Pty Ltd

Level 2, 4 Glen Street, Milsons Point NSW 2061

T: 61 2 9552 2344 F: 61 2 9552 1338 W: www.nbrsarchitecture.com

E: architecture@nbrsarchitecture.com

ABN 16 802 247 565 © 2021

Any form of replication of this drawing in full or in part without the written permission of NBRS & PARTNERS Pty Ltd constitutes an infringement of the copyright.

21385

NEW LIVERPOOL PRIMARY SCHOOL

at

Lachlan Street and Burnside Drive, Liverpool

for

SCHOOLS INFRASTRUCTURE

DRAWING TITLE

SITE PLAN

PROJECT STAGE

SSDA MODIFICATION STAGE 1

NOT FOR CONSTRUCTION

NORTH SCALE SHEET SIZE
1:400 A1

DRAWING NUMBER

NLPS-ST1-LA-DRG-3600

ISSUE

2

GENERAL

	EXISTING BOUNDARY
	BOUNDARY ADJUSTMENTS (TBC)
	ROOF OVERHEAD
	EXISTING TREE TO BE RETAINED REFER TO ARBORIST REPORT
	EXISTING TREE TO BE REMOVED REFER TO ARBORIST REPORT
	SRZ - STRUCTURAL ROOT ZONE / TPZ - TREE PROTECTION ZONE REFER TO ARBORIST REPORT

LEVELS AND GRADING

ALL LEVELS FOR PAVEMENT, KERBS AND STORMWATER / SERVICE PITS, RAIN WATER TANKS. REFER TO CIVIL DRAWING

	EXISTING LEVELS REFER TO SURVEY
	PROPOSED LANDSCAPE LEVELS
	PROPOSED TOP OF WALL LEVEL
	KERB RAMP / DRIVEWAY CROSSING REFER TO CIVIL
	STORMWATER PIT LEVELS
	TRENCH DRAIN LEVELS

FENCE & GATE

	MF01 - 2.1M DIPLOMAT FENCE
	MF02 - 2.4M HIGH BRICK WALL
	MF03 - 1.5M PRE SCHOOL FENCE
	MF04 - EXISTING FENCE
	SWING GATE (SWG)
	SLIDING GATE (GSL)

HARDWORKS - MATERIAL AND FINISHES

REFER TO T-SHEET

	PAV01 - CONCRETE BROOM FINISHED / COLOUR: NORMAL GREY
	PAV02 - EXPOSED AGGREGATE CONCRETE
	PAV03 - COLOURED CONCRETE BROOM FINISH / COLOUR: CCS - COBALT BLUE
	PAV04 - PERMEABLE UNIT PAVER(HydroSTON 50) COLOUR : 20% Sandstone, 30% Soapstone, 50% Light Grey
	PAV06 - DECOMPOSED GRANITE STABILISED WITH CEMENT
	PAV07a - SOFTFALL COLOUR REFER T-SHEET

	PAV08 - SYNTHETIC TURF 40MM PILE
	PAV09 - ASPHALT REFER TO CIVIL SPEC
	WT01a - INSITU CONCRETE HOB WALL 200MM ABOVE FINISHED PAVEMENT LEVEL
	WT01b - INSITU CONCRETE DOWNTURN 200MM WIDE DOWNTURN TO SLAB
	WT02 - BRICK FREESTANDING WALL 2400MM ABOVE FINISHED PAVEMENT LEVEL
	ST01 - INSITU CONCRETE STAIR REFER LANDSCAPE DETAILS AND T-SHEET

	STORMWATER GRATES / PITS, SERVICE PIT REFER TO CIVIL AND ELECTRIC DETAILS FOR FINAL LEVEL, LOCATION AND SIZE
	OSD - ONSITE DETENTION TANK REFER TO CIVIL DETAILS FOR FINAL LEVEL, LOCATION AND SIZE

SOFTWORKS - MATERIAL AND FINISHES

	MP01 - ENTRY PLANTING (NORTH)
	MP02 - ENTRY (BURNSIDE DRIVE)
	MP03 - INTERNAL PLANTING
	MP04 - BUSH TUCKER
	MP05 - BOUNDARY SCREENING
	MP06 - REVEGETATION
	MP07 - SUPPORT PLANTING
	MP08 - WSUD
	MP09 - PUBLIC DOMAIN GARDEN BED
	VEGGIE GARDEN

	TRF01 - TURF (ROLLS)
	TRF02 - EXISTING TURF
	MU01 - ORGANIC MULCH
	MU02 - PLAY MULCH

	PROPOSED TREE
--	---------------

FIXTURES - MATERIAL AND FINISHES

REFER TO T-SHEET

	FX01 - CIRCULAR SEATING BENCH
	FX02 - STRAIGHT SEATING BENCH
	FX03 - SANDSTONE LOG [LONG]
	FX04 - SANDSTONE LOG [SHORT]
	FX05 - BIKE RACK LOOP
	FX06 - BIN
	FX07 - MULTI-HOOP POST
	FX08 - NATURE PLAY EQUIPMENT
	FX09 - TIMBER & METAL VEGETATED SCREEN
	FX10 - FLAGPOLE
	FX11 - BIN (COUNCIL STANDARD)
	FX12 - SEAT (COUNCIL STANDARD)
	BOL01 - BOLLARD
	HR03 - HANDRAIL-DOUBLE FREESTANDING REFER TO ARCHITECT'S DETAILS AND T-SHEET
	BA01 - BALUSTRADE TYPE 01 REFER TO ARCHITECT'S DETAILS AND T-SHEET
	ED01 - INSITU CONCRETE EDGE WHERE ADJACENT TO SOFTFALL/SYNTHETIC TURF, EDGE TO BE FULLY WRAPPED BY ADJACENT PAVEMENT MATERIAL
	ED02 - TIMBER EDGE
	TGSI03 - TACTILE GROUND SURFACE INDICATORS
	WST01 CONCRETE WHEELSTOP REFER TO CIVIL

PROJECT TEAM

ARCHITECT

NBRS ARCHITECTURE

4 Glen St, Milsons Point NSW 2061

02 9552 2344

PROJECT MANAGER

ADCO

Level 1, 7-9 West Street, North Sydney NSW 2060

02 8437 5000

CIVIL ENGINEER

Meinhardt Bonacci

Level 4, 96 Clarence St, Sydney NSW 2000

02 9207 8600

ISSUE	DATE	DESCRIPTION	BY	APPROVED
1	28/09/2022	ISSUE FOR COORDINATION	SRS	MF
2	19/10/2022	SSDA MODIFICATION	SRS	MF

Landscape Architect

NBRSARCHITECTURE.
LANDSCAPE

NBRS & PARTNERS Pty Ltd

Level 2, 4 Glen Street, Milsons Point NSW 2061

T: 61 2 9552 2344 F: 61 2 9552 1338 W: www.nbrsarchitecture.com

E: architects@nbrsarchitecture.com

ABN 16 802 247 565 © 2021

Any form of replication of this drawing in full or in part without the written permission of NBRS+PARTNERS Pty Ltd constitutes an infringement of the copyright.

21385

NEW LIVERPOOL PRIMARY SCHOOL

at

Lachlan Street and Burnside Drive, Liverpool

for

SCHOOLS INFRASTRUCTURE

DRAWING TITLE

LEGEND

PROJECT STAGE

SSDA MODIFICATION STAGE 1

NOT FOR CONSTRUCTION

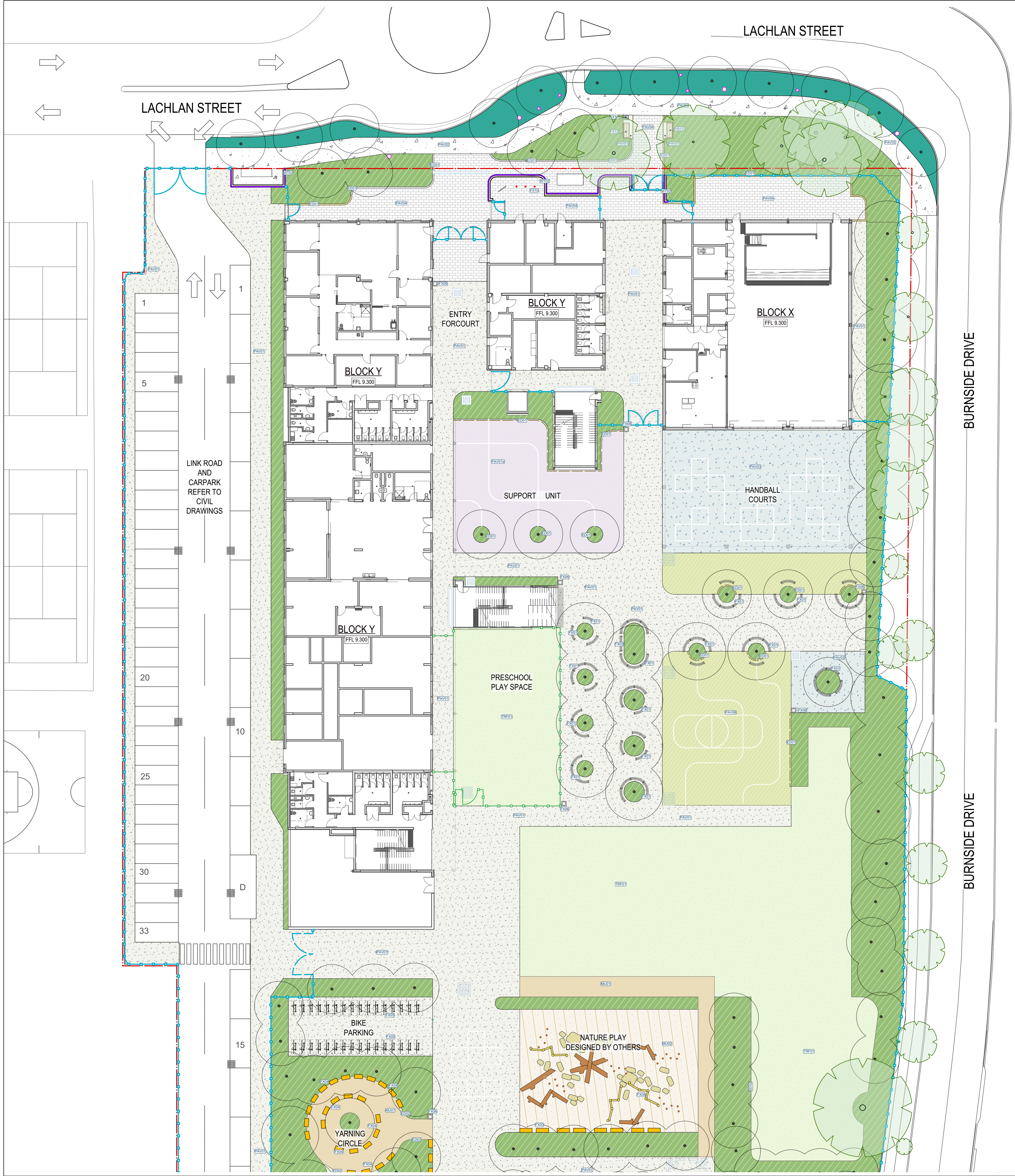
NORTH	SCALE NTS	SHEET SIZE A1
-------	--------------	------------------

DRAWING NUMBER

NLPS-ST1-LA-DRG-3601

ISSUE

2



PROJECT TEAM

ARCHITECT

NBRS ARCHITECTURE

4 Glen St, Milsons Point NSW 2061

02 9552 2344

PROJECT MANAGER

ADCO

Level 1, 7-9 West Street, North Sydney NSW 2060

02 8437 5000

CIVIL ENGINEER

Meinhardt Bonacci

Level 4, 66 Clarence St, Sydney NSW 2000

02 8207 8600

ISSUE	DATE	DESCRIPTION	BY	APPD
1	28/09/2022	ISSUE FOR COORDINATION	SRS	MF
2	19/10/2022	SSDA MODIFICATION	SRS	MF

Landscape Architect

NBRS ARCHITECTURE.
LANDSCAPE

NBRS & PARTNERS Pty Ltd

Level 2, 4 Glen Street, Milsons Point NSW 2061

T: 61 2 9552 2344 F: 61 2 9552 1308 W: www.nbrsarchitecture.com

E: architecture@nbrsarchitecture.com

ABN 16 802 247 565 © 2021

Any form of replication of this drawing in full or in part without the written permission of NBRS+PARTNERS Pty Ltd constitutes an infringement of the copyright.

21385

NEW LIVERPOOL PRIMARY SCHOOL

at

Lachlan Street and Burnside Drive, Liverpool

for

SCHOOLS INFRASTRUCTURE

DRAWING TITLE

GENERAL ARRANGEMENT PLAN

PROJECT STAGE

SSDA MODIFICATION STAGE 1

NOT FOR CONSTRUCTION

NORTH	SCALE	SHEET SIZE
	1:250	A1
DRAWING NUMBER		ISSUE
NLPS-ST1-LA-DRG-3610		2



PROJECT TEAM

ARCHITECT
NBRS ARCHITECTURE
4 Glen St, Milsons Point NSW 2061
02 9552 2344

PROJECT MANAGER
ADCO
Level 1, 7-9 West Street, North Sydney NSW 2060
02 8437 5000

CIVIL ENGINEER
Meinhardt Bonacci
Level 4, 66 Clarence St, Sydney NSW 2000
02 8247 8400

ISSUE	DATE	DESCRIPTION	BY	APPD
1	28/09/2022	ISSUE FOR COORDINATION	SRS	MF
2	19/10/2022	SSDA MODIFICATION	SRS	MF

Landscape Architect

**NBR
ARCHITECTURE.
LANDSCAPE**

NBRS & PARTNERS Pty Ltd
Level 2, 4 Glen Street, Milsons Point NSW 2061
T: 61 2 9552 2344 F: 61 2 9552 1338 W: www.nbrsarchitecture.com
E: architects@nbrsarchitecture.com
ABN 16 802 247 565 © 2021
Any form of replication of this drawing in full or in part without the written permission of NBRS+PARTNERS Pty Ltd constitutes an infringement of the copyright.

21385

NEW LIVERPOOL PRIMARY SCHOOL

at

Lachlan Street and Burnside Drive, Liverpool

for

SCHOOLS INFRASTRUCTURE

DRAWING TITLE

GENERAL ARRANGEMENT PLAN

PROJECT STAGE

SSDA MODIFICATION STAGE 1

NOT FOR CONSTRUCTION

DRAWING NUMBER

NLPS-ST1-LA-DRG-3611

ISSUE

2

NORTH

SCALE

1:250

SHEET SIZE

A1

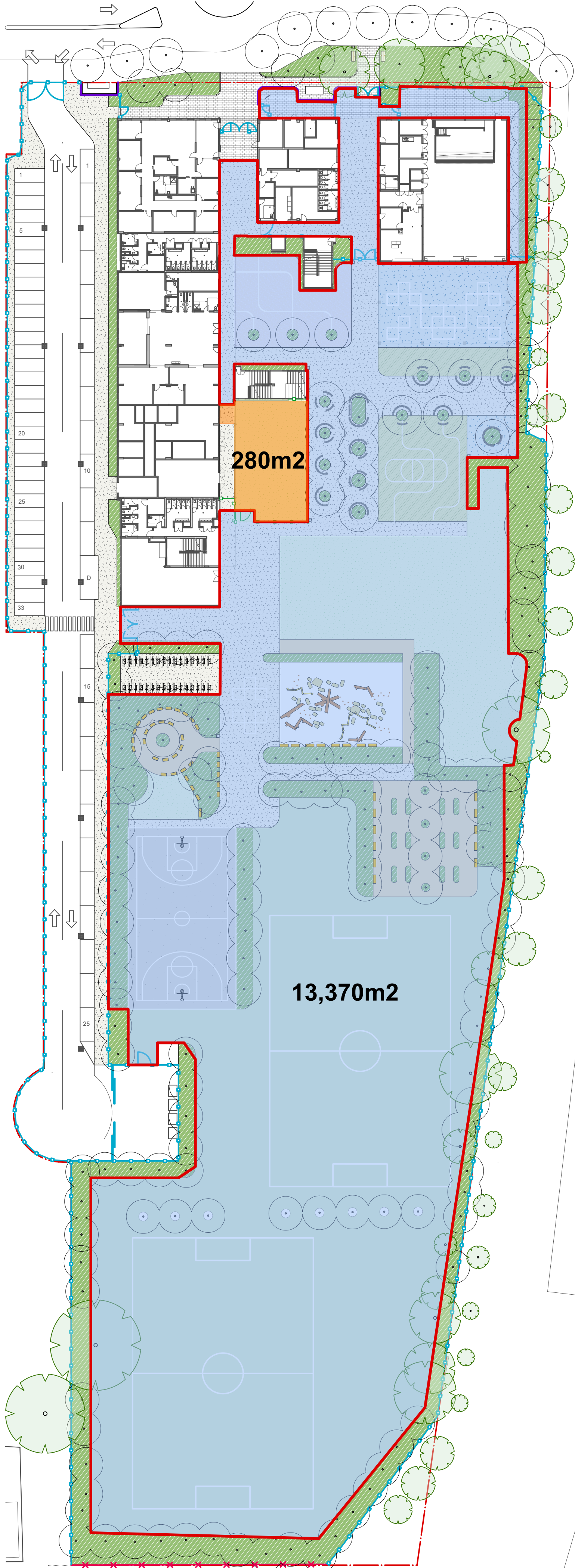
0 2.5 5 7.5 10m

PRIMARY SCHOOL UNENCUMBERED PLAY SPACE
REQUIREMENT 10M2/STUDENT
540 STUDENTS = 5400sqm

PRE SCHOOL STUDENT UNENCUMBERED PLAY
SPACE 7M2/STUDENT
40 STUDENTS = 280sqm

TOTAL SCHOOL TARGET = 5680sqm

TOTAL ACHIEVED = 13,650sqm

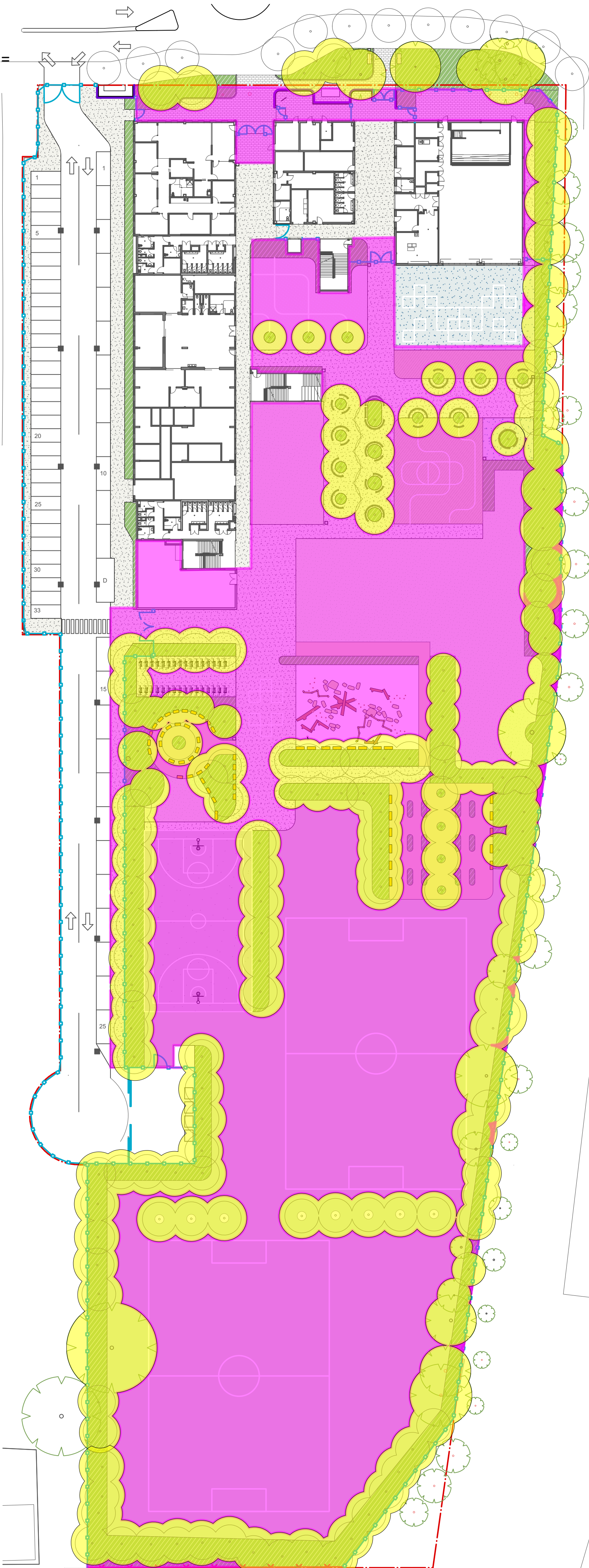


MATURE CANOPY COVER

TOTAL SITE AREA (EXCLUDING BUILT FORM) =
15,290sqm

MATURE CANOPY COVER
= 6,380sqm

PERCENTAGE OF CANOPY COVER = 42%



PROJECT TEAM

ARCHITECT
NBR ARCHITECTURE
4 Glen St, Milsons Point NSW 2061
02 9552 2344

PROJECT MANAGER
ADCO
Level 1, 7-9 West Street, North Sydney NSW 2060
02 9437 5000

CIVIL ENGINEER
Meinhardt Bonacci
Level 4, 66 Clarence St, Sydney NSW 2000
02 8247 8600

ISSUE	DATE	DESCRIPTION	BY	APPD
1	28/09/2022	ISSUE FOR COORDINATION	SRS	MF
2	19/10/2022	SSDA MODIFICATION	SRS	MF

Landscape Architect
NBR ARCHITECTURE.
LANDSCAPE

NBR & PARTNERS Pty Ltd
Level 2, 4 Glen Street, Milsons Point NSW 2061
T: 61 2 9552 2344 F: 61 2 9552 1338 W: www.nbrarchitecture.com
E: architecture@nbrarchitecture.com
ABN 16 802 247 565 © 2021
Any form of replication of this drawing in full or in part without the written permission of NBR&PARTNERS Pty Ltd constitutes an infringement of the copyright.

21385

NEW LIVERPOOL PRIMARY SCHOOL

at

Lachlan Street and Burnside Drive, Liverpool

for

SCHOOLS INFRASTRUCTURE

DRAWING TITLE
UNENCUMBERED PLAY & TREE CANOPY

PROJECT STAGE
SSDA MODIFICATION STAGE 1

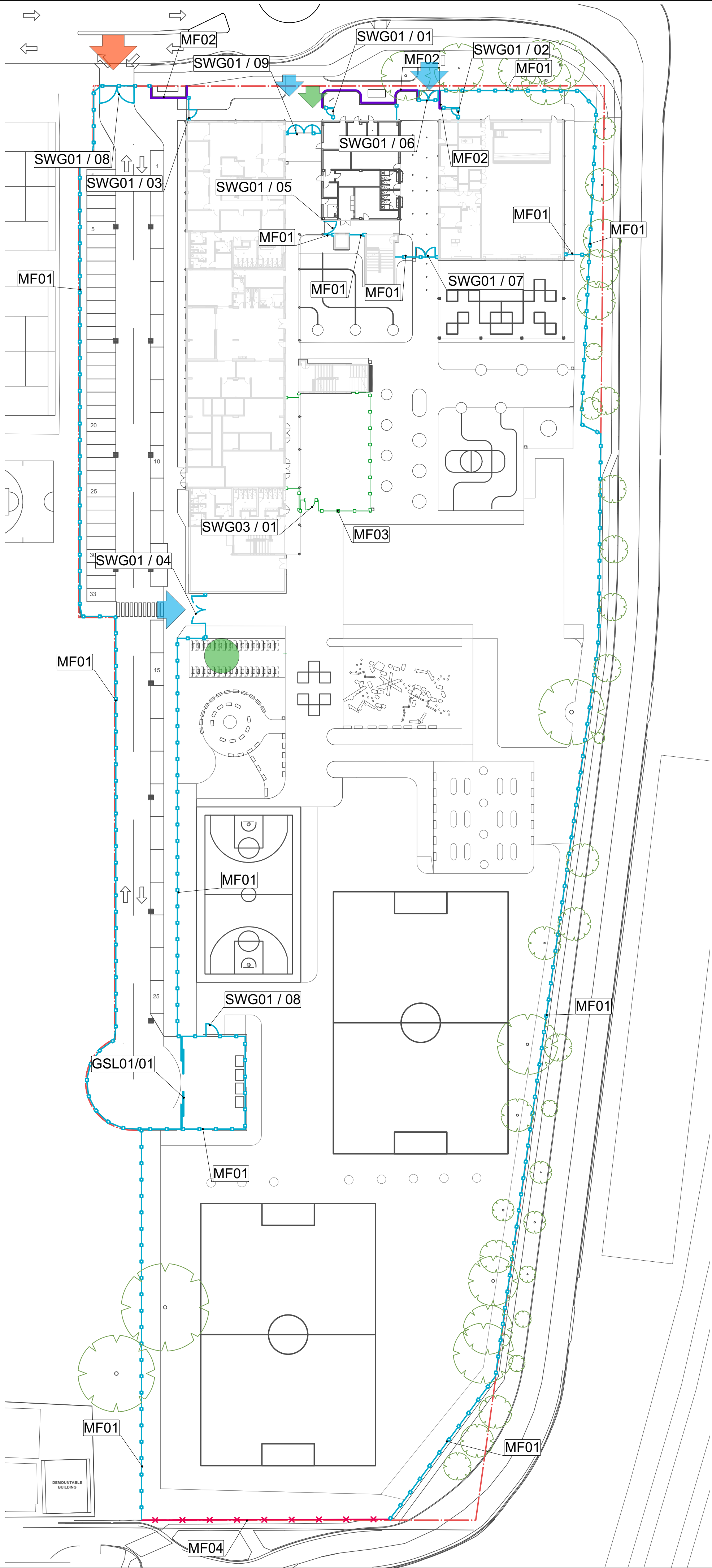
NOT FOR CONSTRUCTION

NORTH
SCALE
1:400

SHEET SIZE
A1

DRAWING NUMBER
NLPS-ST1-LA-DRG-3620

ISSUE
2



FENCE & GATE

- MF01 - 2.1M DIPLOMAT FENCE
- MF02 - 2.4M HIGH BRICK WALL
- MF03 - 1.5M PRE SCHOOL FENCE
- MF04 - EXISTING FENCE
- SWG - SWING GATE (SWG)
- GSL - SLIDING GATE (GSL)
- EXISTING BOUNDARY

- PEDESTRIAN ENTRY
- VEHICLE ENTRY
- CYCLE ENTRY
- BIKE PARKING

FENCE & GATE SCHEDULE					
*NOTE- All gates to match adjacent fence type materials unless specified					
CODE	QUANTITY	GATE TYPE	LEAF	GATE OPENING (mm)	FIXTURES*
MF01	2.1M DIPLOMAT FENCE				
GSL01.01	1	Sliding	Double	17000	
SWG01.01	1	Swing	Single	1250	
SWG01.02	1	Swing	Single	1250	
SWG01.03	1	Swing	Single	1500	
SWG01.04	1	Swing	Double	5000	
SWG01.05	1	Swing	Single	2500	
SWG01.06	1	Swing	Double	3600	
SWG01.07	1	Swing	Double	3600	
SWG01.08	1	Swing	Double	6300	
SWG01.09	1	Swing	Double	3000	
MF02	2.4M CURVED BRICK WALL				
MF03	1.5M FENCE				
SWG03.01	1	Swing	Single	1800	
MF04	EXISTING FENCE				

PROJECT TEAM

ARCHITECT

NBR ARCHITECTURE

4 Glen St, Milsons Point NSW 2061

02 9552 2344

PROJECT MANAGER

ADCO

Level 1, 7/8 West Street, North Sydney NSW 2060

02 8437 5000

CIVIL ENGINEER

Meinhardt Bonacci

Level 4, 66 Clarence St, Sydney NSW 2000

02 9207 8600

ISSUE	DATE	DESCRIPTION	BY	APPD
1	28/09/2022	ISSUE FOR COORDINATION	SRS	MF
2	19/10/2022	SSDA MODIFICATION	SRS	MF

Landscape Architect

NBR
ARCHITECTURE.
LANDSCAPE

NBR & PARTNERS Pty Ltd

Level 2, 4 Glen Street, Milsons Point NSW 2061

T: 61 2 9552 2344 F: 61 2 9552 1338 W: www.nbrsarchitecture.com

E: architecture@nbrsarchitecture.com

ABN 16 802 241 565 © 2021

Any form of replication of this drawing in full or in part without the written permission of NBR&PARTNERS Pty Ltd constitutes an infringement of the copyright.

21385

NEW LIVERPOOL PRIMARY SCHOOL

at

Lachlan Street and Burnside Drive, Liverpool

for

SCHOOLS INFRASTRUCTURE

DRAWING TITLE

FENCING PLAN

PROJECT STAGE

SSDA MODIFICATION STAGE 1

NOT FOR CONSTRUCTION

NORTH

1

SCALE

1:500

SHEET SIZE

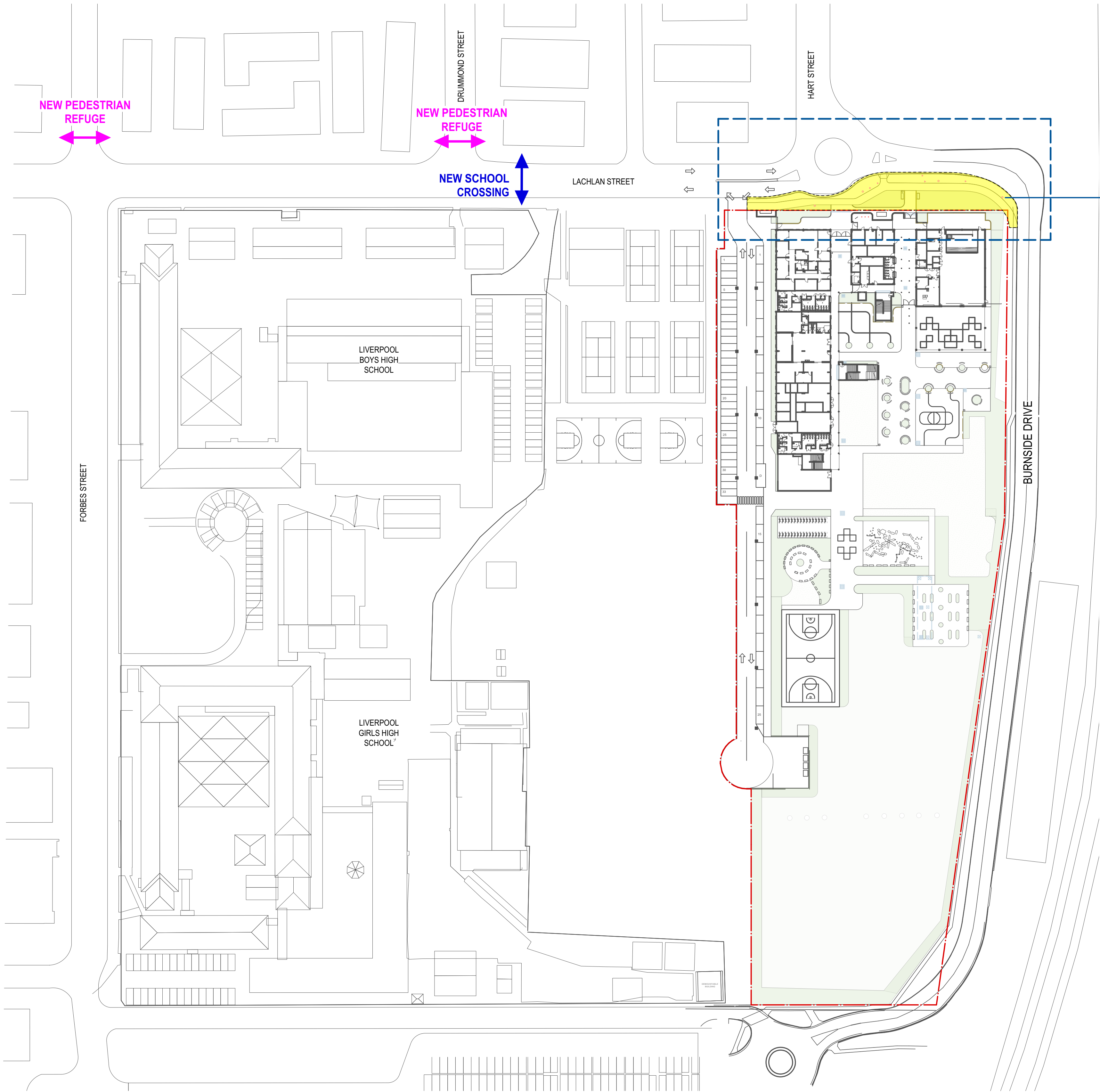
A1

DRAWING NUMBER

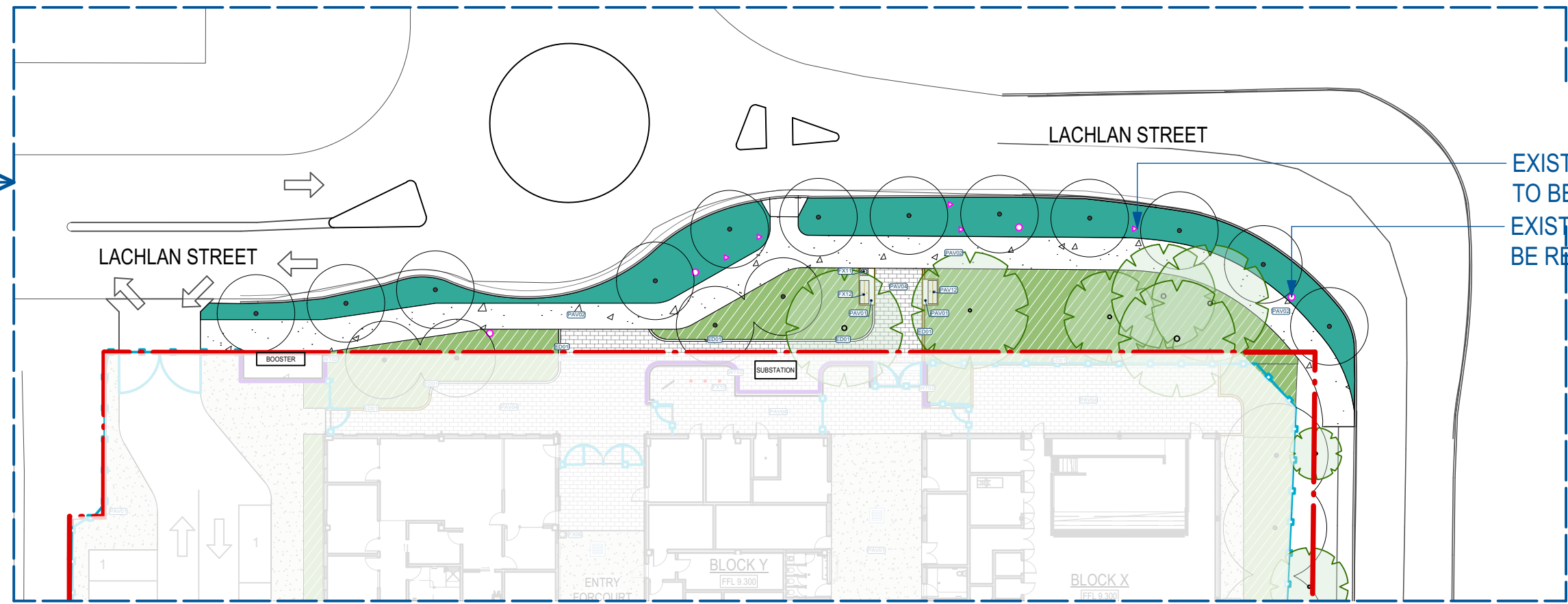
NLPS-211-LA-DRG-3621

ISSUE

2



1 PUBLIC DOMAIN - SITE PLAN
SCALE 1:800 @ A1



2 PUBLIC DOMAIN PLAN ALONG LACHLAN STREET
SCALE 1:400 @ A1

LEGEND

- NLPs SITE BOUNDARY
- EXTENT OF PUBLIC DOMAIN WORKS
- PAV02 - EXPOSED AGGREGATE CONCRETE
- PAV04 - PERMEABLE UNIT PAVER(HydroSTON 50)
COLOUR : 20% Sandstone, 30% Soapstone, 50% Light Grey
- MP09 - PUBLIC DOMAIN GARDEN BED
- EXISTING TREE TO BE RETAINED
REFER TO ARBORIST REPORT
- PROPOSED TREE
- FX11 - BIN (COUNCIL STANDARD)
- FX12 - SEAT (COUNCIL STANDARD)
- EXISTING LIGHT POLE TO BE RETAINED
- EXISTING STREET SIGN TO BE RETAINED
- ED01 - INSITU CONCRETE EDGE

PROJECT TEAM

ARCHITECT

NBR
ARCHITECTURE

4 Glen St, Milsons Point NSW 2061
02 9552 2344

PROJECT MANAGER

ADCO

Level 1, 7/8 West Street, North Sydney NSW 2060
02 8437 5000

CIVIL ENGINEER

Meinhardt Bonacci

Level 4, 66 Clarence St, Sydney NSW 2000
02 8207 8600

ISSUE	DATE	DESCRIPTION	BY	APPROVED
1	28/09/2022	ISSUE FOR COORDINATION	SRS	MF
2	19/10/2022	SSDA MODIFICATION	SRS	MF

Landscape Architect

NBR
ARCHITECTURE.
LANDSCAPE

NBR & PARTNERS Pty Ltd

Level 2, 4 Glen Street, Milsons Point NSW 2061

T: 61 2 9552 2344 F: 61 2 9552 1308 W: www.nbrsarchitecture.com

E: architecture@nbrsarchitecture.com

ABN 16 802 247 565 © 2021

Any form of replication of this drawing in full or in part without the written permission of NBR & PARTNERS Pty Ltd constitutes an infringement of the copyright.

21385

NEW LIVERPOOL PRIMARY SCHOOL

at

Lachlan Street and Burnside Drive, Liverpool

for

SCHOOLS INFRASTRUCTURE

DRAWING TITLE

PUBLIC DOMAIN PLAN

PROJECT STAGE

SSDA MODIFICATION STAGE 1

NOT FOR CONSTRUCTION

NORTH
SCALE
AS SHOWN
SHEET SIZE
A1

DRAWING NUMBER
NLPs-ST1-LA-DRG-3630
ISSUE
2