



Greenwich Public School Kingslangley Campus upgrade – new three storey building

Greenwich Public School

Term 2 Project update

May 2020

Investing in our schools

The NSW Government is investing \$6.7 billion over four years to deliver more than 190 new and upgraded schools to support communities across NSW. In addition, a record \$1.3 billion is being spent on school maintenance over five years. This is the largest investment in public education infrastructure in the history of NSW.

The NSW Department of Education is committed to delivering new and upgraded schools for communities across NSW. The delivery of these important projects is essential to the future learning needs of our students and supports growth in the local economy.

Progress summary

The upgrade of the Greenwich Road Campus was completed ahead of Term 1, 2020. We delivered a new two-storey building with 8 flexible learning spaces, a new amphitheatre and increased outdoor play area.

The main works for the Kingslangley Road Campus upgrade were completed for Term 2, 2020. We delivered 18 new flexible learning spaces, a new library, two new special programs rooms, as well as an upgrade to core facilities including the canteen, staff and administration amenities, and hall.

Term 2 works

At the Kingslangley Road Campus we will be:

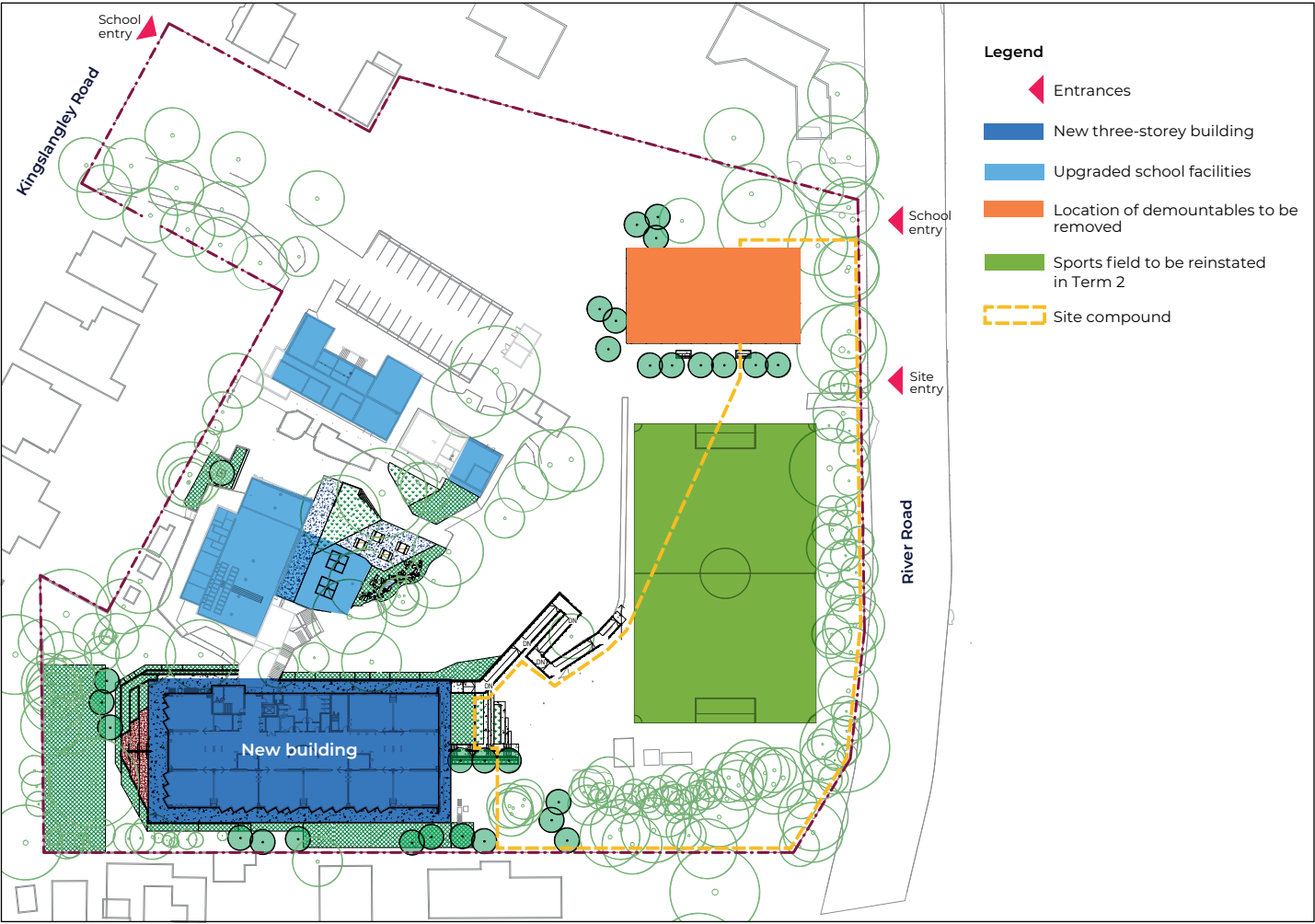
- removing all demountable buildings
- reinstating the sports field
- building a new tennis court
- building a new playground

Removal of demountables from Thursday 21 May

Work will start with the installation of temporary fencing around the work area and disconnection of the demountable modules. A 60 tonne mobile crane will then lift the demountable modules onto 48 trucks over a three day period from Monday 25 May. Traffic control will be in place for the safety of the school, motorists and the local community. Pedestrian access to the school via the River Road entrance will be maintained.

For more information contact:

School Infrastructure NSW
Email: schoolinfrastructure@det.nsw.edu.au
Phone: 1300 482 651
www.schoolinfrastructure.nsw.gov.au



Greenwich Public School Kingslangley Road Campus upgrade