

Greenwich Public School

Day 1 Term 2 Welcome



Greenwich Public School upgrade – exterior of new building at Kingslangley Road Campus

Welcome to your school

Main construction works for the Greenwich Public School Kingslangley Road Campus upgrade have now been completed. We have delivered:



18 new permanent learning spaces



New library



2 new special programs rooms



Upgraded canteen

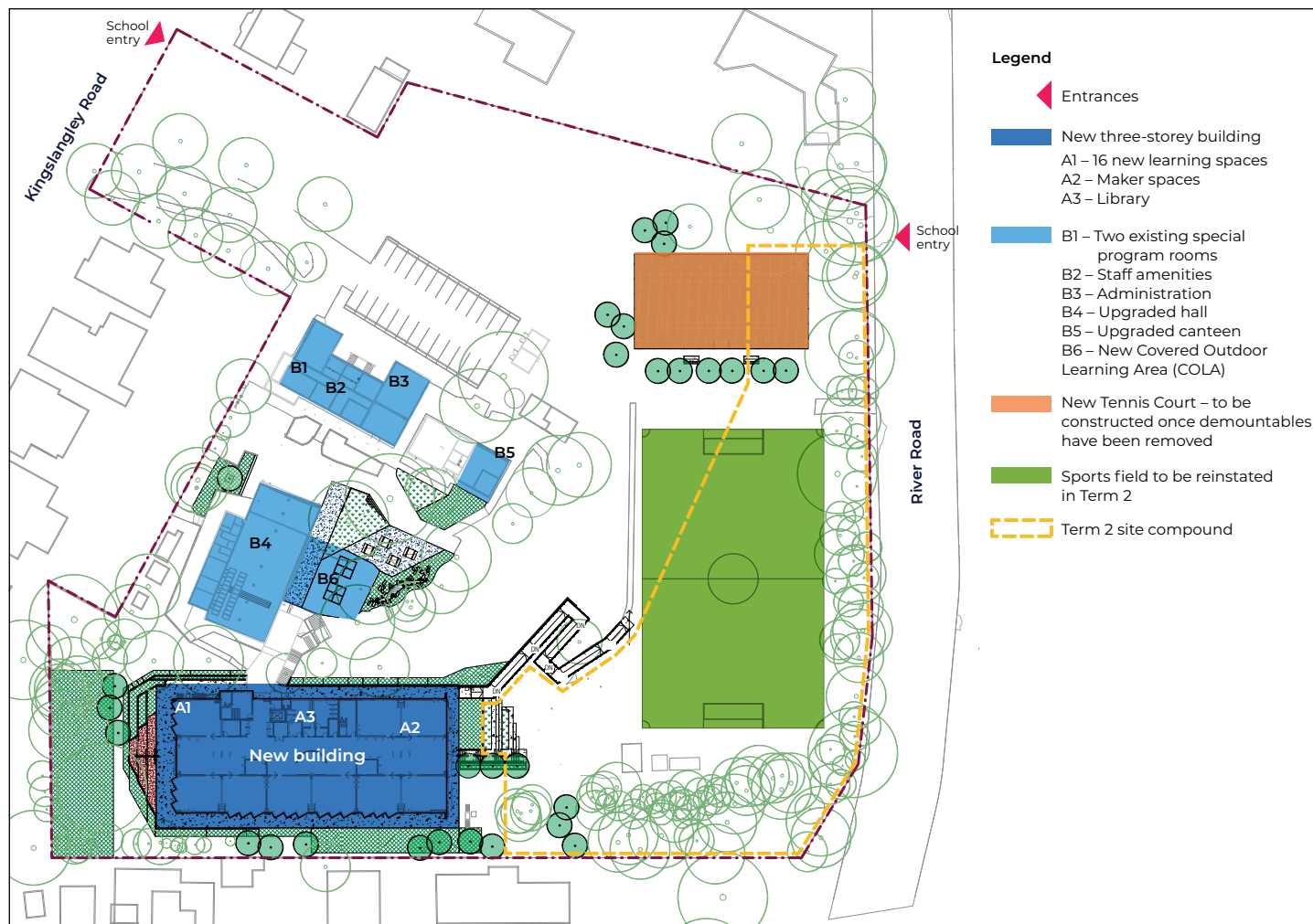


Upgraded hall



Upgraded staff and administration amenities

Thank you for your patience during construction. We are thrilled to deliver this project for your school community and hope you enjoy your new spaces.



Greenwich Public School Kingslangley Road Campus upgrade

Main works complete

The main works for the Greenwich Public School Kingslangley Road Campus have now been completed. We have delivered 18 new permanent learning spaces, a new library, two new special programs rooms, and an upgrade to existing core facilities including the canteen, staff and administration amenities and hall.

Over the coming weeks we will finish work on the playground area, and reinstate the sports field. We expect all contractors to have vacated the school site by the start of Term 3.

The new facilities are now ready for students and staff to use when they return to school.

An upgrade of the Greenwich Road Campus was completed in Term 1, 2020. It delivered a new two-storey building with eight flexible learning spaces, a new amphitheatre and increased outdoor play area.

Message from your Principal

We have been officially handed the keys to the new building at our Kingslangley Road Campus. After three years of planning and construction, our vision has become a reality. What amazing facilities we have been gifted!

We have moved into the new learning spaces with teachers relocating their resources into the beautiful classrooms. Our teachers have been working for three years to develop our pedagogy (way of teaching) and embed this into our practices so we are ready to provide high quality learning experiences for our students to prepare them for the future. It's a very exciting time for us as a school community.

Vicki McKenzie, Principal



New innovative learning environments

The upgrade to Greenwich Public School has now been completed. This exciting project has delivered innovative learning environments for the next generation of young minds.

Innovative learning environments offer flexibility where teachers can provide opportunities for student engagement. The learning spaces:

- are adaptable to accommodate small or large groups
- include learning centres with flexible spaces that allow students to use technology in a variety of settings
- provide opportunities to enhance skills in collaboration, communication, critical thinking, problem solving and creativity.



Innovative learning spaces at Greenwich Public School



Frequently asked questions

Will there be any changes to the school entrances?

The Kingslingley Road and River Road school entrances are operational and the school car park has been restored.

Are the upgraded facilities air conditioned?

Yes, all learning spaces within the new building have air conditioning installed.

When will demountable classrooms be removed?

Further notification will be provided regarding timing for the removal of the demountable learning spaces from the southeast corner of the school site.

Contact us

For more information about this project contact School Infrastructure NSW:

Website: schoolinfrastructure.nsw.gov.au

Email: schoolinfrastructure@det.nsw.edu.au

Phone: 1300 482 651

For information about school activities and operations, contact the school directly:

Principal: Vicki McKenzie

Website: greenwich-p.schools.nsw.gov.au

Email: greenwich-p.school@det.nsw.edu.au

Phone: 02 9436 3217