

Greenwich Public School

Back to school 2020



Welcome to your school

We're excited your new school facilities are ready for you to use. The upgrade to your school includes:



A new two-storey building



8 flexible learning spaces

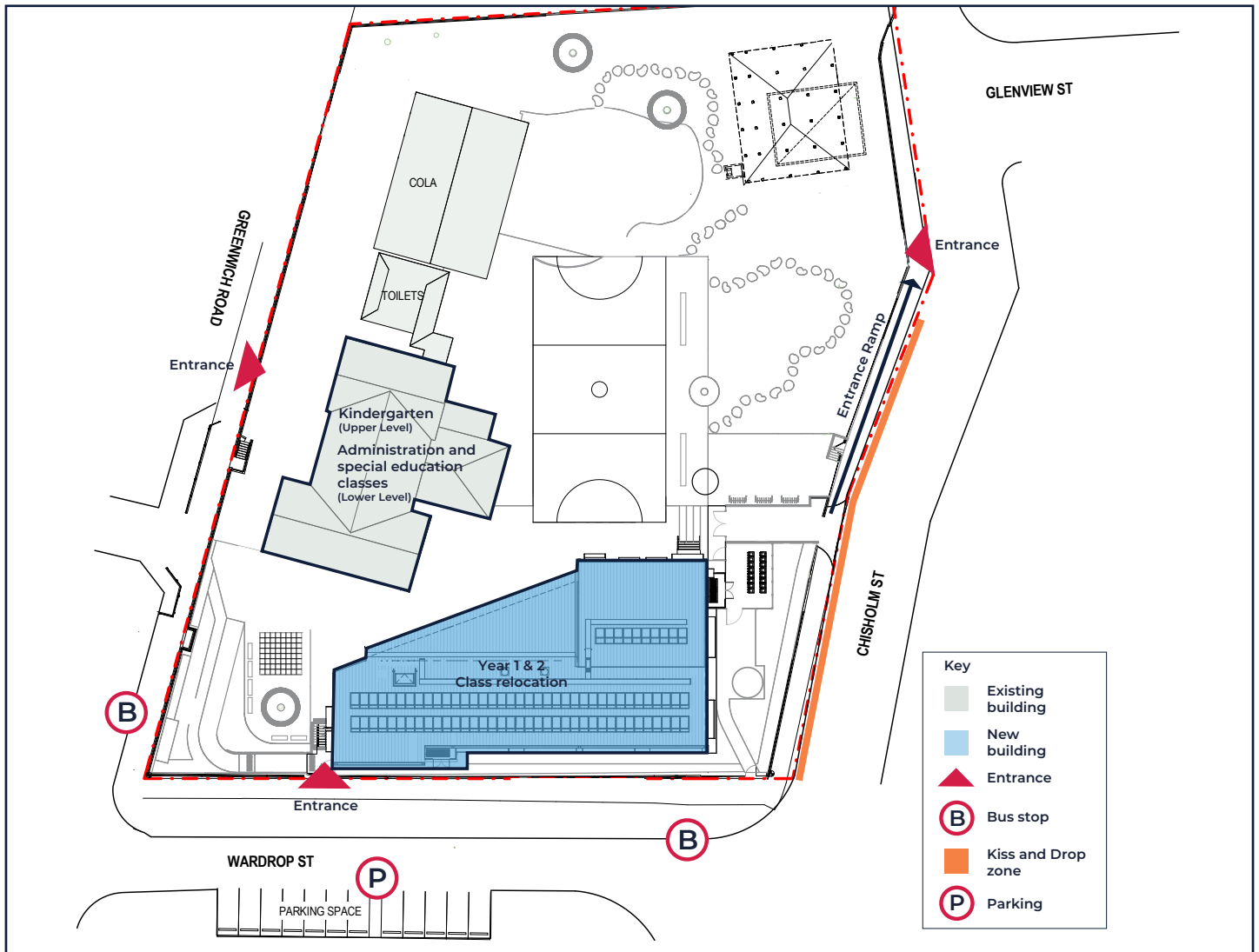


A new amphitheatre and amenities



Increased outdoor play area

Thank you for your patience during construction. We are thrilled to deliver this project for your school community and hope you enjoy your new spaces. Share your back to school experience with [#Ready2020](#).



Access to new school buildings from Term 1 2020

Innovative learning environments

The upgrade to Greenwich Public School has been completed. This exciting project now delivers innovative learning environments for the next generation of young minds.

Innovative learning environments provide flexibility where teachers can provide opportunities for student engagement. The learning spaces:

- are adaptable to accommodate small or large groups
- include learning neighbourhoods with flexible spaces that allow students to use technology in a variety of settings
- provide opportunities to enhance skills in collaboration, communication, critical thinking, problem solving and creativity.



Innovative learning spaces



Innovative learning spaces



Frequently asked questions

What is being delivered in the upgrade at Greenwich Public School?

We are excited to announce the Greenwich Road campus of the Greenwich Public School upgrade is complete. The upgrade includes a new two-storey building with innovative, flexible learning spaces, an amphitheatre and new outdoor play areas.

The upgrade of the Greenwich Road campus is a part of a wider Greenwich Public School project that will deliver a total of 26 new permanent teaching spaces across the Kingslangley Road and Greenwich Road campuses. On completion of the Kingslangley Road campus, students will benefit from a new library, two new special programs rooms and upgraded core facilities including the canteen, hall and administration.

Which classes are being relocated now?

Year 1 and 2 will be relocated to classrooms in the new building from Wednesday 29 January 2020. Kindergarten students will be located on the upper floor of the old building from Monday 3 February 2020. For more information, please see the site plan inside.

Will there be any changes to the school entrances?

The main entrance to the school on Greenwich Road and the entry near the Greenwich Out of School Hours Care on Chisholm Street both remain unchanged. There is a new gate on Wardrop Street near the intersection with Greenwich Road. For more information, please see the school site plan inside.

Will there be any changes to the Out of School Hours Care?

No, it will continue to operate as normal.

Will there be any changes to parking, Kiss and Drop zone, staff parking or the bus stop?

No. These remain unchanged and will continue to operate as usual.

Contact us

For more information about this project contact School Infrastructure NSW:

Website: schoolinfrastructure.nsw.gov.au

Email: schoolinfrastructure@det.nsw.edu.au

Phone: 1300 482 651

For information about school activities and operations, contact the school directly:

Principal: Vicki McKenzie

Website: greenwich-p.schools.nsw.gov.au

Email: greenwich-p.school@det.nsw.edu.au

Phone: 02 9436 3217