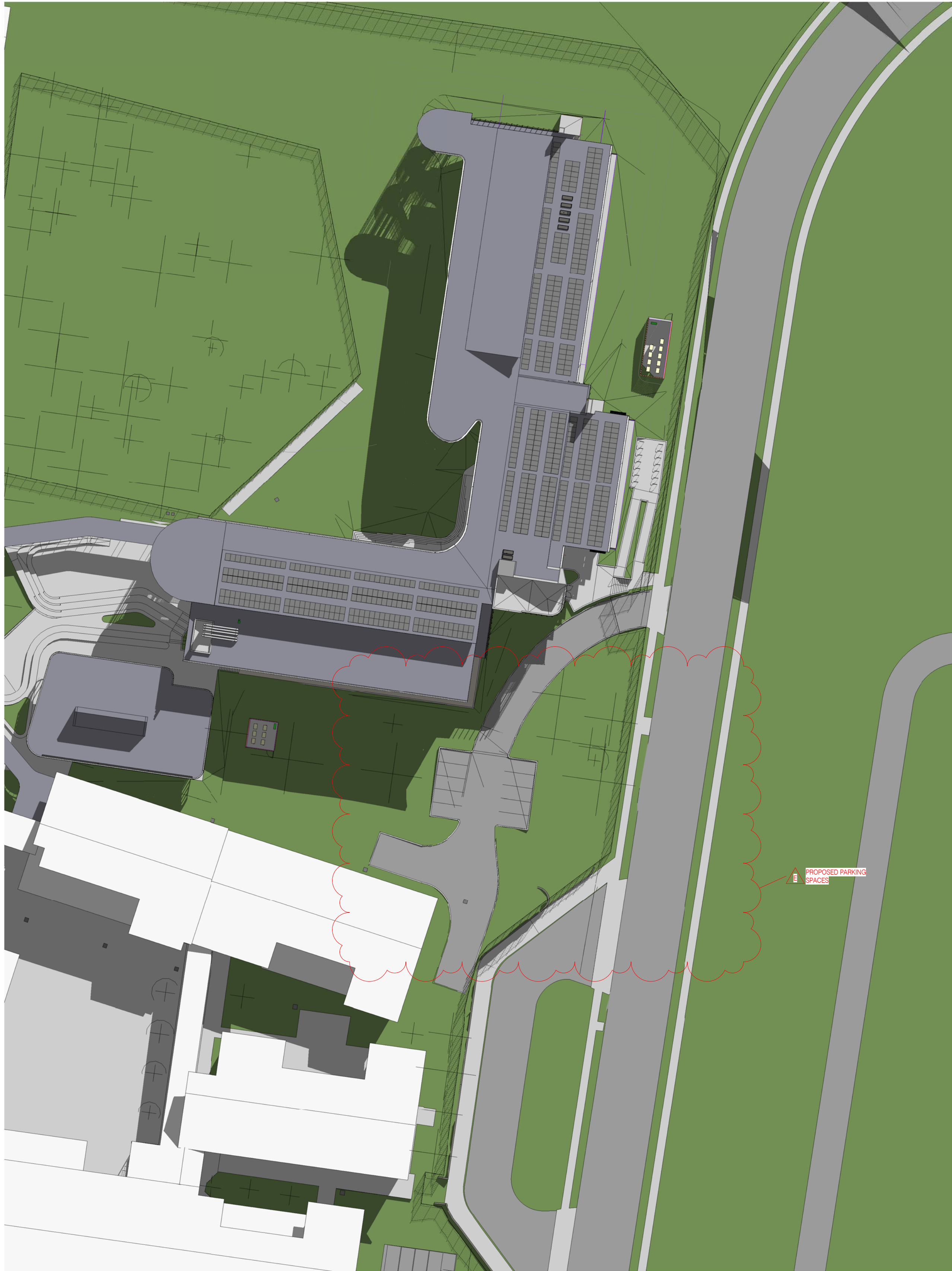
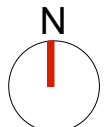
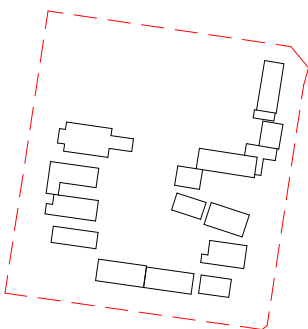


1 PROPOSED SITE SOLAR ACCESS STUDY - 21 JUNE 0900 AM



2 PROPOSED SITE SOLAR ACCESS STUDY - 21 JUNE 1000 AM

Key Plan:



Drawing Disclaimer:
Do not scale from drawings.
Verify all dimensions on site before commencing work.
Copying or reproduction of this drawing is strictly prohibited without the consent of PTW Architects

Note
PTW takes no responsibility for external building elements. Anything connected with any design, materials selection, construction or installation of any cladding, facade or external building element must be checked by and remains the responsibility of others, including suitably qualified experts as may be required.

Rev	Amendment	By	Chk*	Date
E	SSDA SUBMISSION	FJ	DJ	22/09/12
D	SSDA SUBMISSION	FJ	DJ	21/11/10
C	DRAFT SSDA SUBMISSION	MB	DJ	21/11/01
B	DRAFT SSDA SUBMISSION	MB	DJ	21/10/25
A	DRAFT SSDA SUBMISSION	MB	DJ	21/10/01

*Registered Architect		
DHJ	Diane H Jones	NSW Arch 4778

Consultants

Client



Education

Architect
PTW Architects
Level 11, 88 Phillip Street
Sydney NSW 2000 Australia
T +61 2 9232 5877
ptw.com.au

Peddie Thorp & Walker P/L
ABN 23 000 454 624
trading as PTW Architects

NSW Nominated Architects
S Parsons Architect No.6098
D Jones Architect No.4778



0 5 10 20 30 40m
@ A1

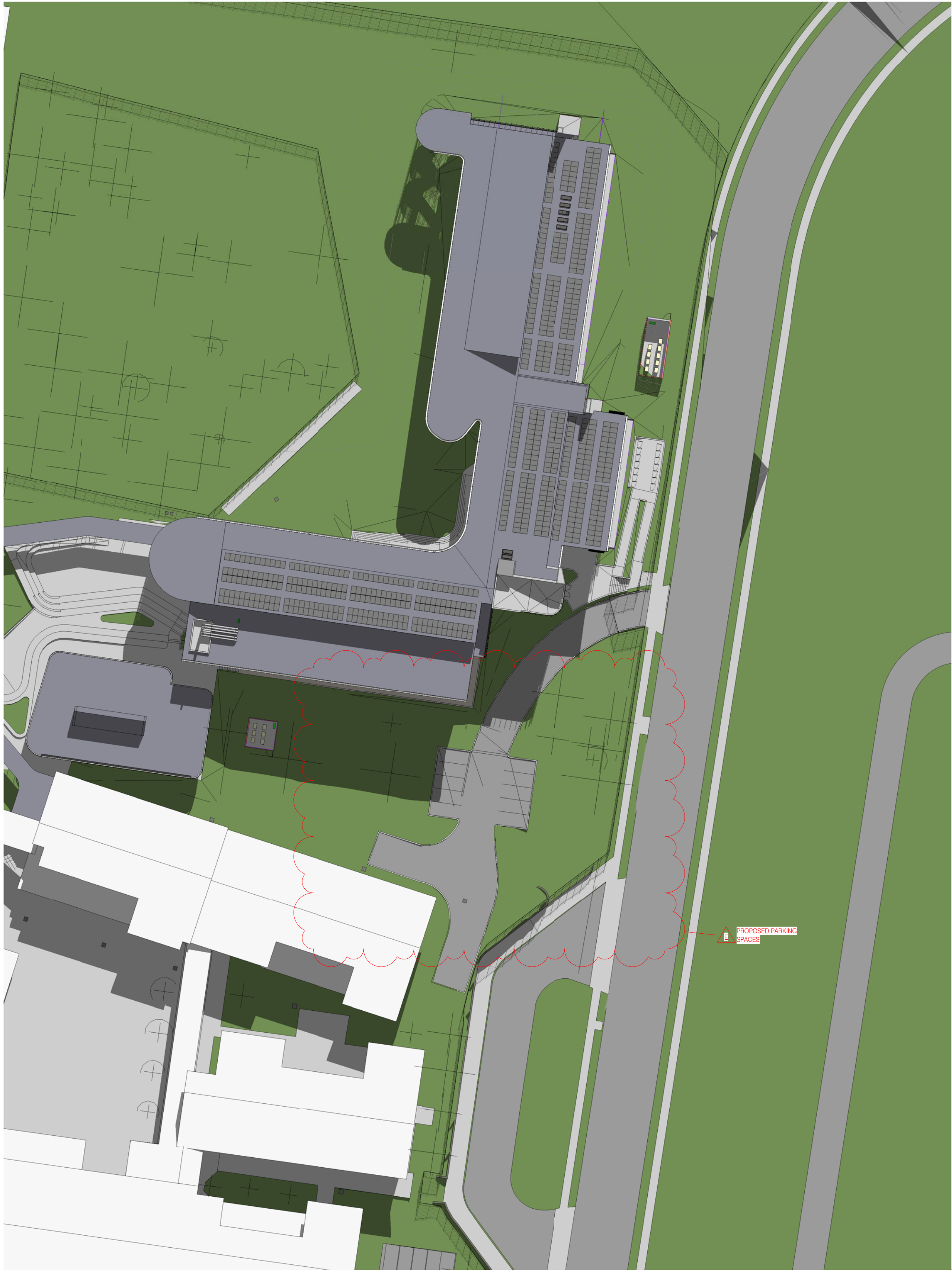
Project PA030471
GLENWOOD HIGH SCHOOL
FORMAN AVENUE, GLENWOOD, NSW
2768

Status
SSDA SUBMISSION

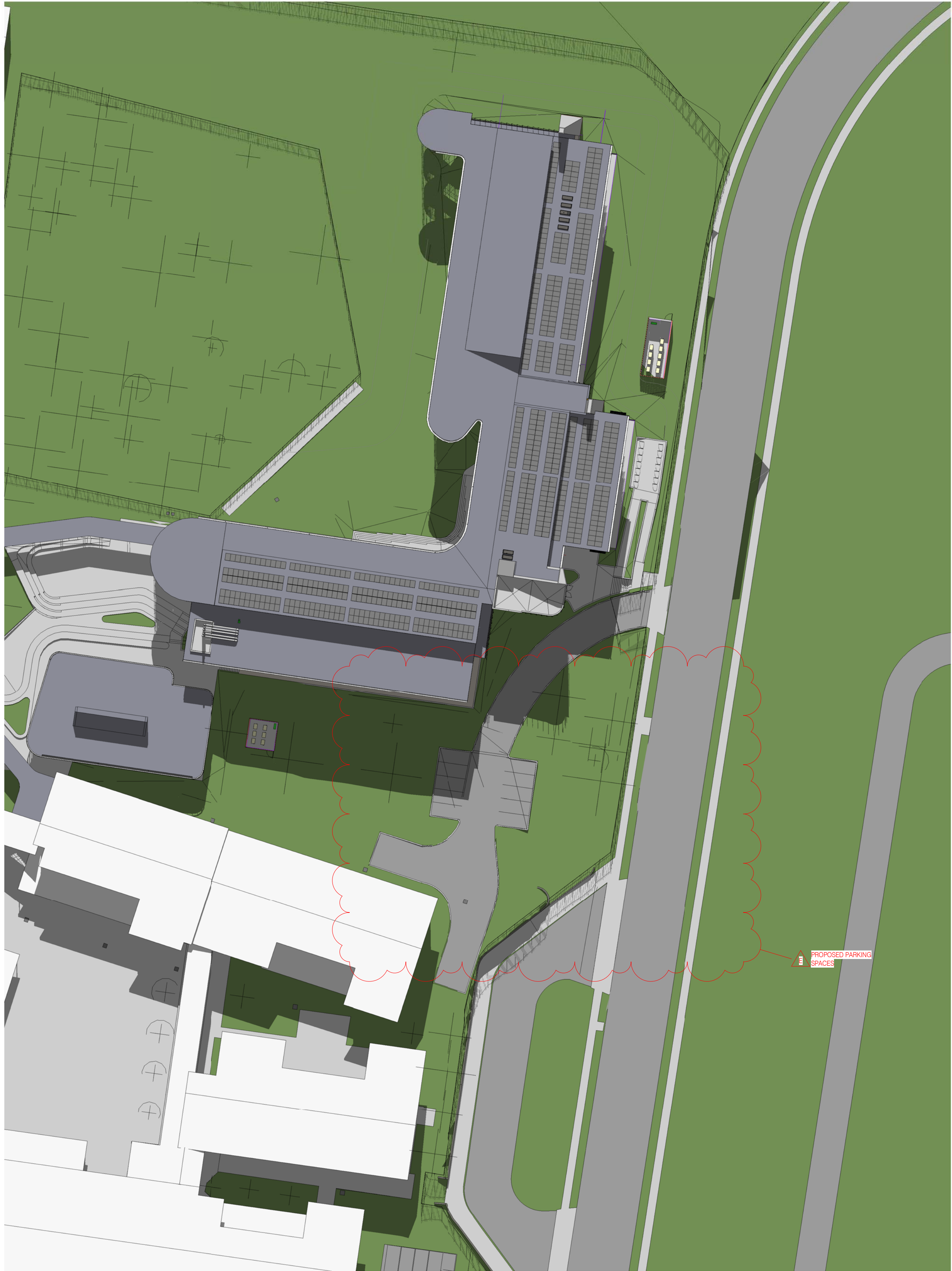
Title
SSDA
SOLAR ACCESS STUDIES

Drawing Number
DA-AR-2005

Revision
E

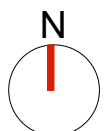
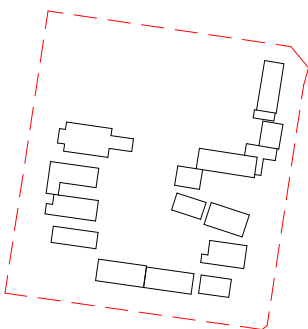


1 PROPOSED SITE SOLAR ACCESS STUDY - 21 JUNE 1100 AM



2 PROPOSED SITE SOLAR ACCESS STUDY - 21 JUNE 12 NOON

Key Plan:



Drawing Disclaimer:
Do not scale from drawings.
Verify all dimensions on site before commencing work.
Copying or reproduction of this drawing is strictly prohibited without the consent of PTW Architects

Note
PTW takes no responsibility for external building elements. Anything connected with any design, materials selection, construction or installation of any cladding, facade or external building element must be checked by and remains the responsibility of others, including suitably qualified experts as may be required.

Rev	Amendment	By	Chk*	Date
E	SSDA SUBMISSION	FJ	DJ	22/09/12
D	SSDA SUBMISSION	FJ	DJ	21/11/10
C	DRAFT SSDA SUBMISSION	MB	DJ	21/11/01
B	DRAFT SSDA SUBMISSION	MB	DJ	21/10/25
A	DRAFT SSDA SUBMISSION	MB	DJ	21/10/01

*Registered Architect		
DHJ	Diane H Jones	NSW Arch 4778

Consultants

Client



Education

Architect
PTW Architects
Level 11, 88 Phillip Street
Sydney NSW 2000 Australia
T +61 2 9232 5877
ptw.com.au

Peddie Thorp & Walker P/L
ABN 23 000 454 624
trading as PTW Architects

NSW Nominated Architects
S Parsons Architect No.6098
D Jones Architect No.4778



0 5 10 20 30 40m
@ A1

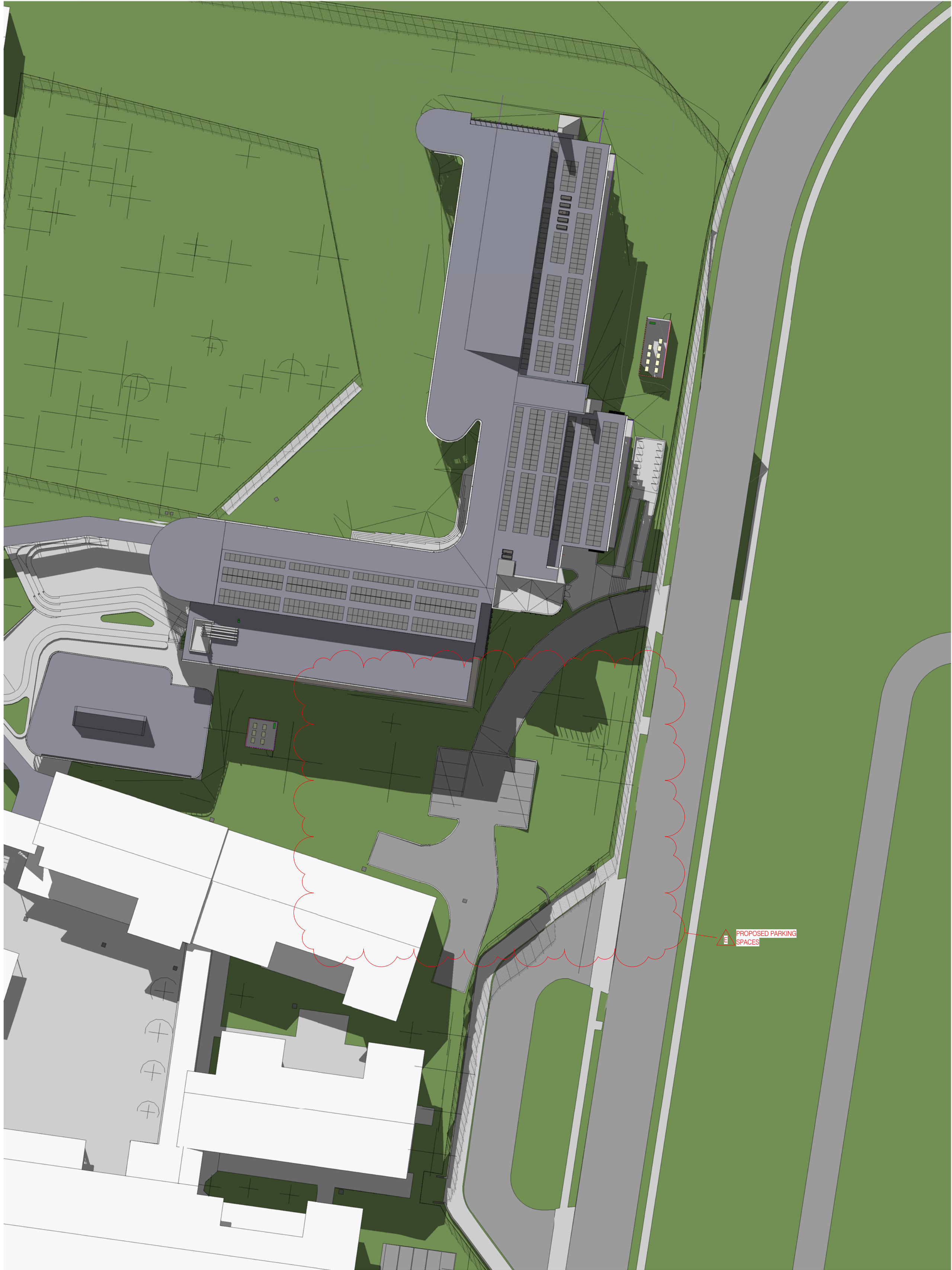
Project PA030471
GLENWOOD HIGH SCHOOL
FORMAN AVENUE, GLENWOOD, NSW
2768

Status
SSDA SUBMISSION

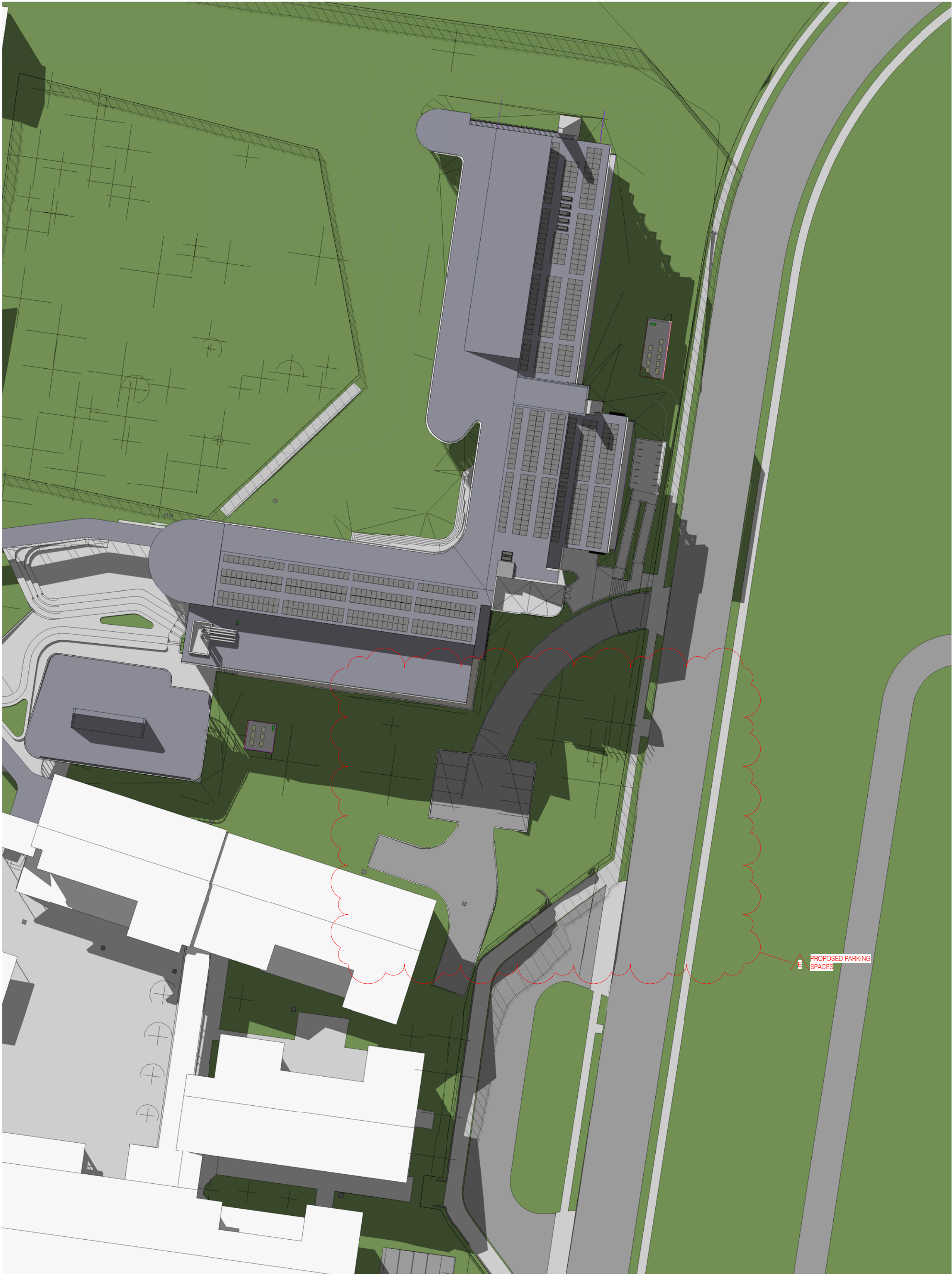
Title
SSDA
SOLAR ACCESS STUDIES

Drawing Number
DA-AR-2006

Revision
E

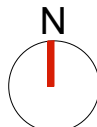
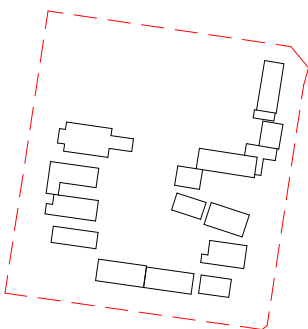


1 PROPOSED SITE SOLAR ACCESS STUDY - 21 JUNE 0100 PM



2 PROPOSED SITE SOLAR ACCESS STUDY - 21 JUNE 0200 PM

Key Plan:



Drawing Disclaimer:
Do not scale from drawings.
Verify all dimensions on site before commencing work.
Copying or reproduction of this drawing is strictly prohibited without the consent of PTW Architects

Note
PTW takes no responsibility for external building elements. Anything connected with any design, materials selection, construction or installation of any cladding, facade or external building element must be checked by and remains the responsibility of others, including suitably qualified experts as may be required.

Rev	Amendment	By	Chk*	Date
E	SSDA SUBMISSION	FJ	DJ	22/09/12
D	SSDA SUBMISSION	FJ	DJ	21/11/10
C	DRAFT SSDA SUBMISSION	MB	DJ	21/11/01
B	DRAFT SSDA SUBMISSION	MB	DJ	21/10/25
A	DRAFT SSDA SUBMISSION	MB	DJ	21/10/01

***Registered Architect**
DHJ Diane H Jones NSW Arch 4778

Consultants

Client



Education

Architect
PTW Architects
Level 11, 88 Phillip Street
Sydney NSW 2000 Australia
T +61 2 9232 5877
ptw.com.au

Peddie Thorp & Walker P/L
ABN 23 000 454 624
trading as PTW Architects

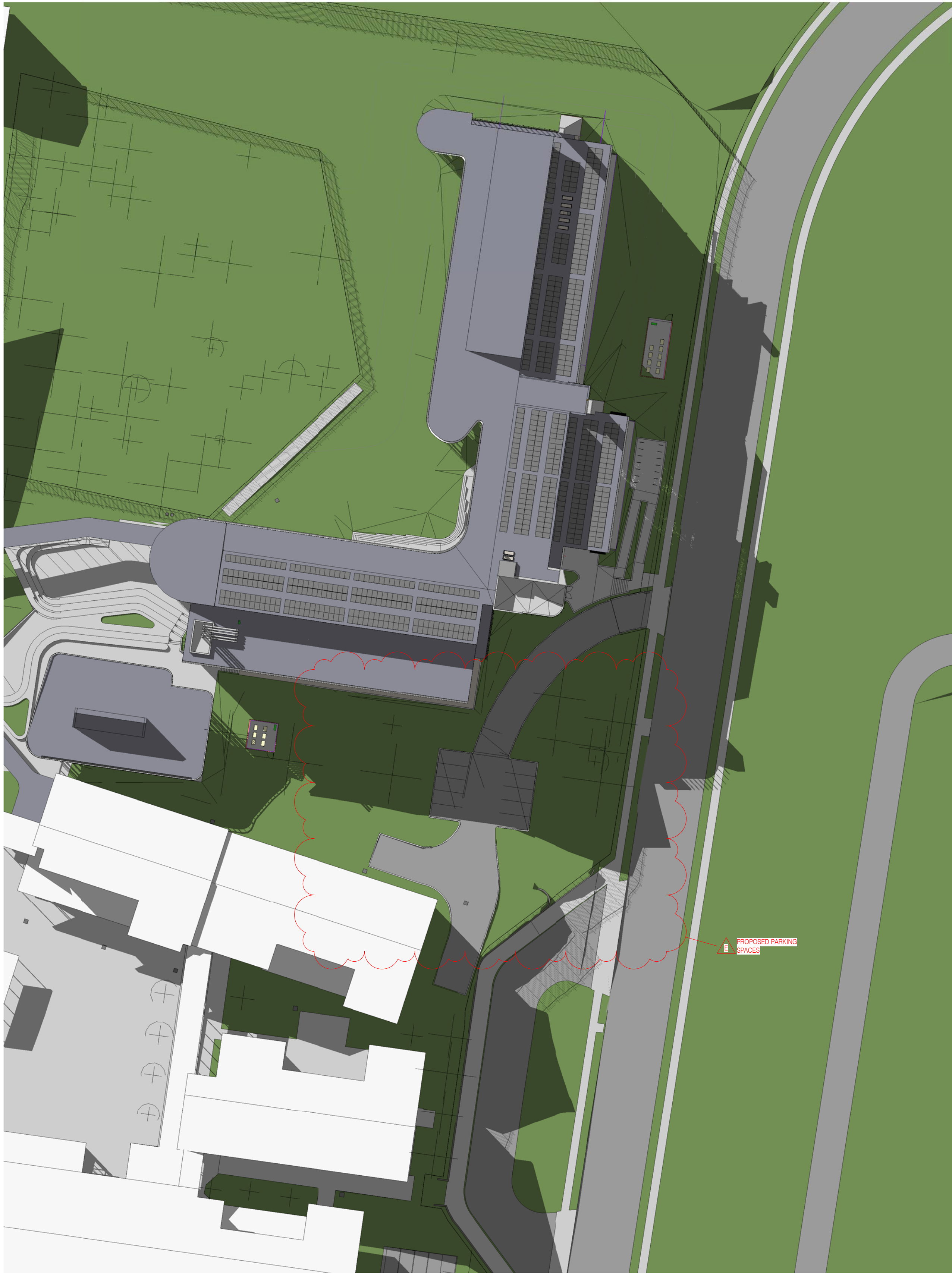
NSW Nominated Architects
S Parsons Architect No.6098
D Jones Architect No.4778



0 5 10 20 30 40m
@ A1
Project PA030471
GLENWOOD HIGH SCHOOL
FORMAN AVENUE, GLENWOOD, NSW
2768
Status
SSDA SUBMISSION

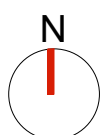
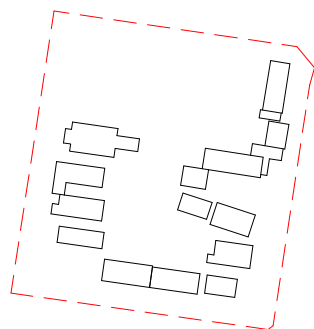
Title
SSDA
SOLAR ACCESS STUDIES
Drawing Number
DA-AR-2007

Revision
E



1 PROPOSED SITE SOLAR ACCESS STUDY - 21 JUNE 0300 PM

Key Plan:



Drawing Disclaimer:
Do not scale from drawings.
Verify all dimensions on site before commencing work.
Copying or reproduction of this drawing is strictly prohibited without the consent of PTW Architects

Note
PTW takes no responsibility for external building elements. Anything connected with any design, materials selection, construction or installation of any cladding, facade or external building element must be checked by and remains the responsibility of others, including suitably qualified experts as may be required.

Rev	Amendment	By	Chk*	Date
E	SSDA SUBMISSION	FJ	DJ	22/09/12
D	SSDA SUBMISSION	FJ	DJ	21/11/10
C	DRAFT SSDA SUBMISSION	MB	DJ	21/11/01
B	DRAFT SSDA SUBMISSION	MB	DJ	21/10/25
A	DRAFT SSDA SUBMISSION	MB	DJ	21/10/01

*Registered Architect		
DHJ	Diane H Jones	NSW Arch 4778

Consultants

Client



Education

Architect
PTW Architects
Level 11, 88 Phillip Street
Sydney NSW 2000 Australia
T +61 2 9232 5877
ptw.com.au

Peddie Thorp & Walker P/L
ABN 23 000 454 624
trading as PTW Architects

NSW Nominated Architects
S Parsons Architect No 6098
D Jones Architect No 4778



0 5 10 20 30 40m
@ A1

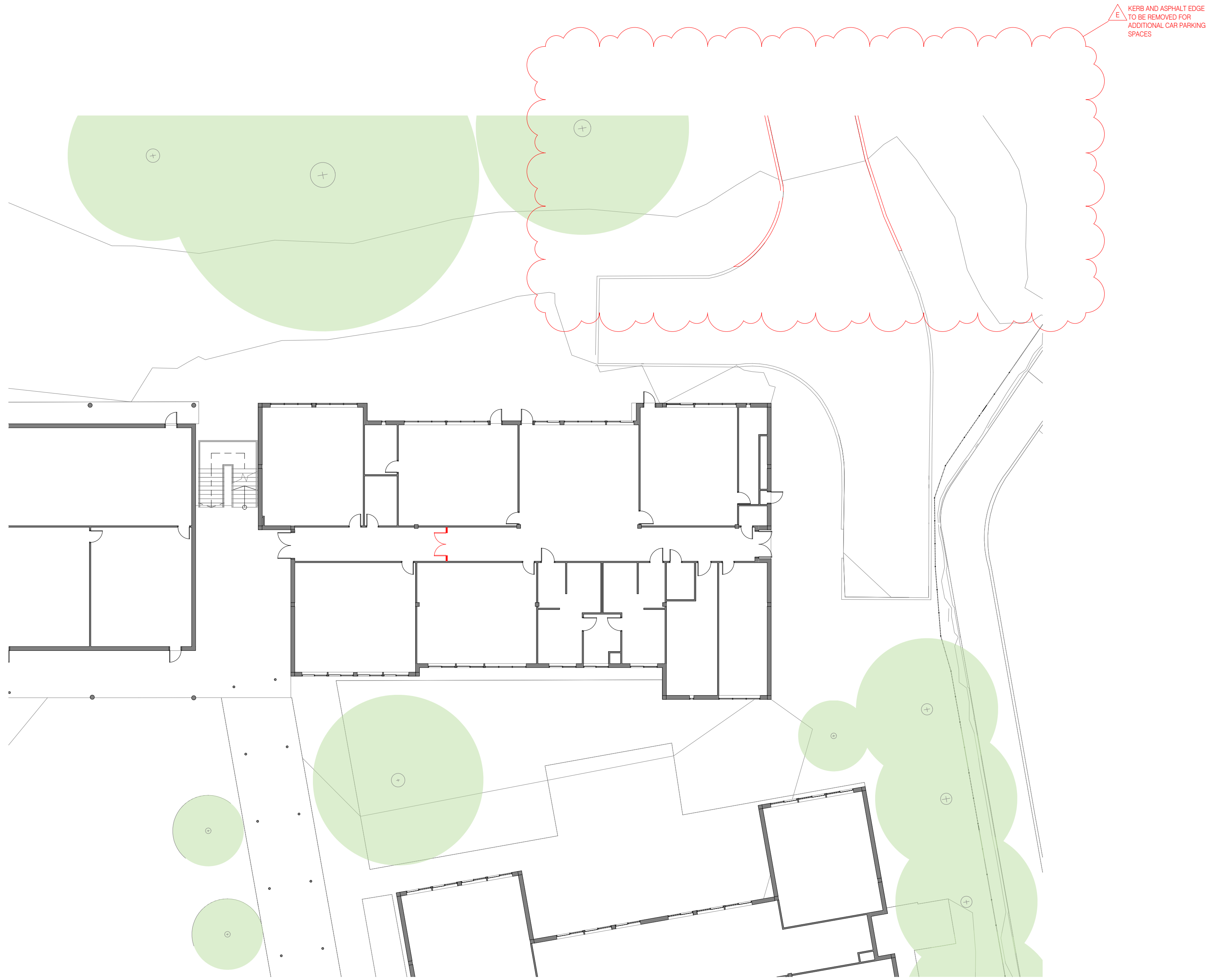
Project PA030471
GLENWOOD HIGH SCHOOL
FORMAN AVENUE, GLENWOOD, NSW
2768

Status
SSDA SUBMISSION

Title
SSDA
SOLAR ACCESS STUDIES

Drawing Number
DA-AR-2008

Revision
E



1 LEVEL 00 - DEMO PLAN
1 : 200 @A1

Demolished wall

Key Plan:

Drawing Disclaimer:
Do not scale from drawings.
Verify all dimensions on site before commencing work.
Copying or reproduction of this drawing is strictly prohibited without the consent of PTW Architects

Note
PTW takes no responsibility for external building elements. Anything connected with any design, materials selection, construction or installation of any cladding, facade or external building element must be checked by and remains the responsibility of others, including suitably qualified experts as may be required.

Rev	Amendment	By	Chk*	Date	*Registered Architect	Consultants	Client
E	SSDA SUBMISSION	FJ	DJ	22/09/12	DHJ Diane H Jones NSW Arch 4778		
D	SSDA SUBMISSION	FJ	DJ	21/11/10			
C	DRAFT SSDA SUBMISSION	MB	DJ	21/11/01			
B	DRAFT SSDA SUBMISSION	MB	DJ	21/10/25			
A	DRAFT SSDA SUBMISSION	MB	DJ	21/10/01			

Architect
PTW Architects
Level 11, 88 Phillip Street
Sydney NSW 2000 Australia
T +61 2 9232 5877
ptw.com.au

NSW GOVERNMENT
Education

Peddie Thorp & Walker P/L
ABN 23 000 454 624
Trading as PTW Architects

NSW Nominated Architects
S Parsons Architect No 6098
D Jones Architect No 4778

0	1	2	5	10	15m
---	---	---	---	----	-----

As indicated @ A1

PTW

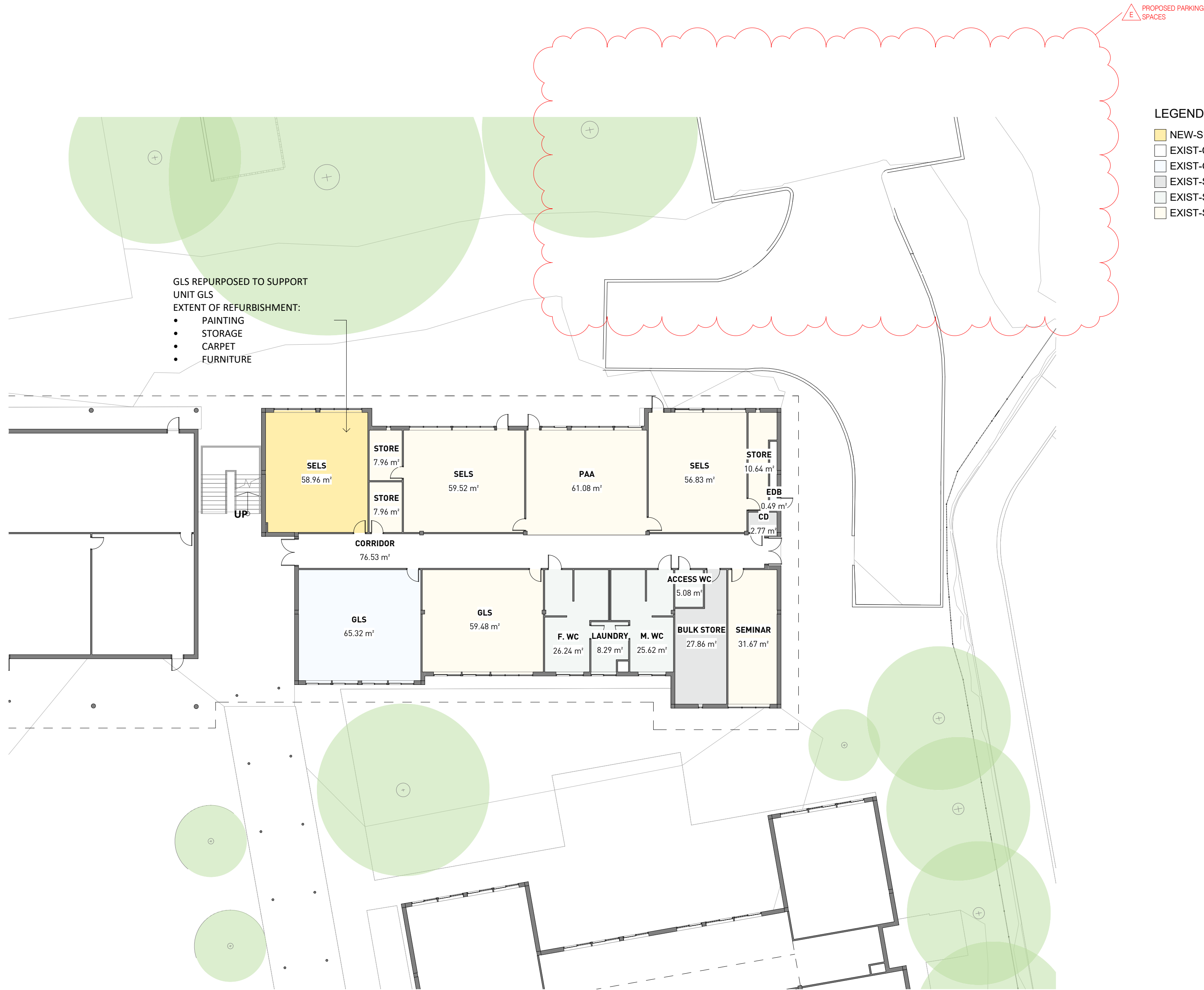
GLENWOOD HIGH SCHOOL
FORMAN AVENUE, GLENWOOD, NSW
2768

Status
SSDA SUBMISSION

Title
SSDA
BUILDING A - DEMO PLAN -
LEVEL 00
DA-AR-A101

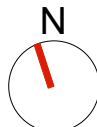
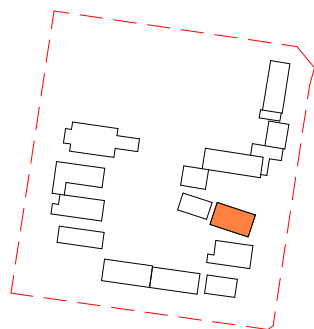
Drawing Number

Revision
E



1 LEVEL 00 - GA
1 : 200 @A1

Key Plan:



Drawing Disclaimer:
Do not scale from drawings.
Verify all dimensions on site before commencing work.
Copying or reproduction of this drawing is strictly prohibited without the consent of PTW Architects

Note
PTW takes no responsibility for external building elements. Anything connected with any design, materials selection, construction or installation of any cladding, facade or external building element must be checked by and remains the responsibility of others, including suitably qualified experts as may be required.

Rev	Amendment	By	Chk*	Date
E	SSDA SUBMISSION	FJ	DJ	22/09/12
D	SSDA SUBMISSION	FJ	DJ	21/11/10
C	DRAFT SSDA SUBMISSION	MB	DJ	21/11/01
B	DRAFT SSDA SUBMISSION	MB	DJ	21/10/25
A	DRAFT SSDA SUBMISSION	MB	DJ	21/10/01

***Registered Architect**
DHJ Diane H Jones NSW Arch 4778

Consultants

Client



Education

Architect
PTW Architects
Level 11, 88 Phillip Street
Sydney NSW 2000 Australia
T +61 2 9232 5877
ptw.com.au

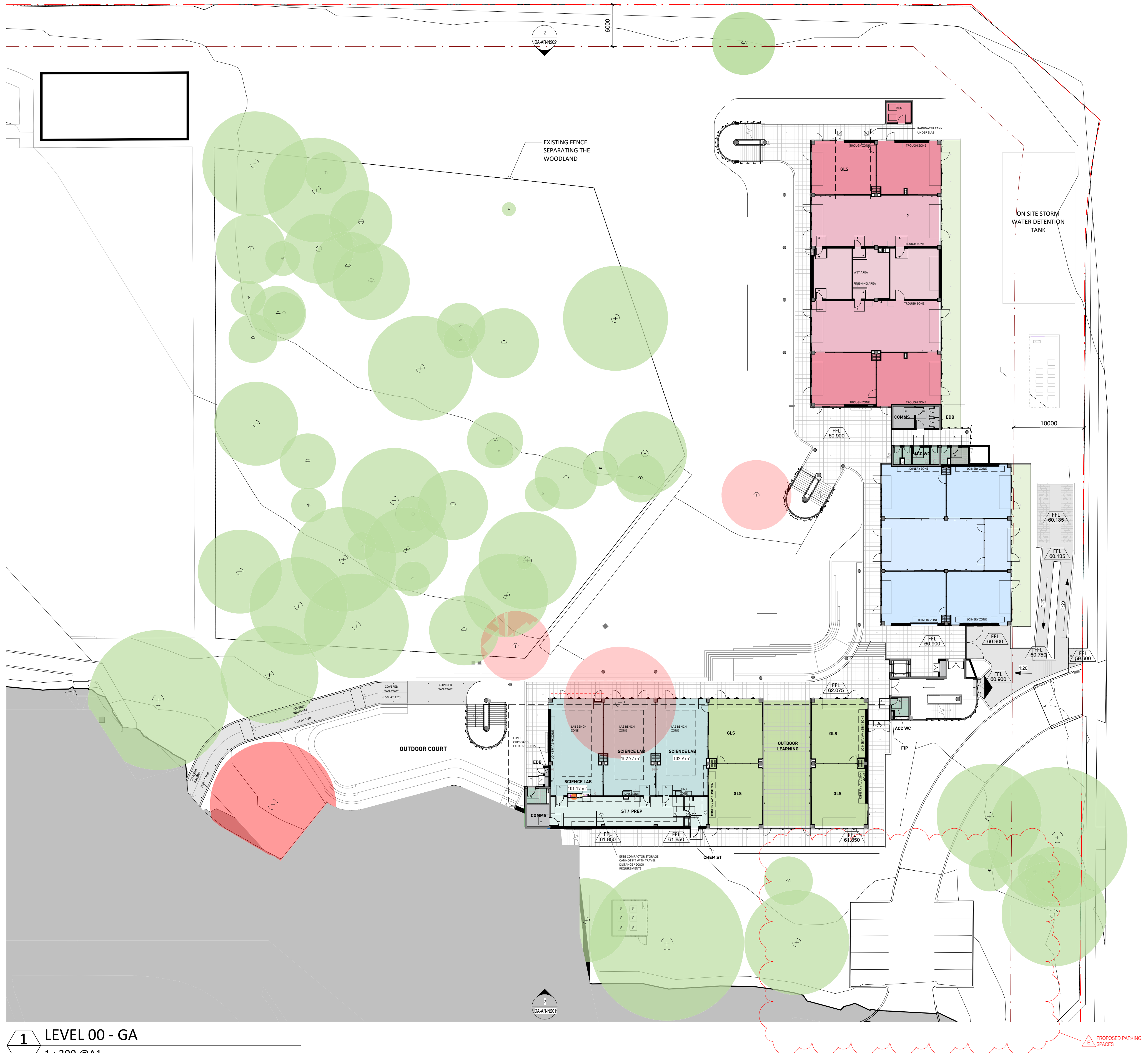
Peddie Thorp & Walker P/L
ABN 23 000 454 624
trading as PTW Architects

NSW Nominated Architects
S Parsons Architect No.6098
D Jones Architect No.4778

0 1 2 5 10 15m
1 : 200 @ A1
Project PA030471
GLENWOOD HIGH SCHOOL
FORMAN AVENUE, GLENWOOD, NSW
2768
Status
SSDA SUBMISSION

Title
SSDA
BUILDING A - GA - LEVEL 00
Drawing Number
DA-AR-A102

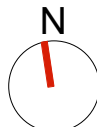
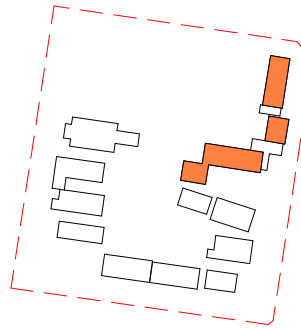
Revision
E



- LEGEND
- NEW-GENERAL LEARNING UNIT
 - NEW-SHARED LEARNING SPACE
 - NEW-OUTDOOR COVERED LEARNING
 - NEW-SCIENCE LEARNING UNIT
 - NEW-SCIENCE LABORATORY
 - NEW-SCIENCE STORE
 - NEW-STORAGE UNIT / COMMS
 - NEW-STUDENT AMENITIES
 - NEW-STAFF AMENITIES
 - NEW-VISUAL ARTS UNIT
 - NEW-VISUAL ARTS WORKSHOP
 - NEW-VISUAL ARTS STORE

1 LEVEL 00 - GA
1 : 300 @A1

Key Plan:



Drawing Disclaimer:
Do not scale from drawings.
Verify all dimensions on site before commencing work.
Copying or reproduction of this drawing is strictly prohibited without the consent of PTW Architects

Note
PTW takes no responsibility for external building elements. Anything connected with any design, materials selection, construction or installation of any cladding, facade or external building element must be checked by and remains the responsibility of others, including suitably qualified experts as may be required.

Rev	Amendment	By	Chk*	Date
E	SSDA SUBMISSION	FJ	DJ	22/09/12
D	SSDA SUBMISSION	QF	DJ	21/11/10
C	DRAFT SSDA SUBMISSION	MB	DJ	21/11/01
B	DRAFT SSDA SUBMISSION	MB	DJ	21/10/25
A	DRAFT SSDA SUBMISSION	MB	DJ	21/10/01

*Registered Architect
DHJ Diane H Jones NSW Arch 4778

Consultants

Client

Architect
PTW Architects
Level 11, 88 Phillip Street
Sydney NSW 2000 Australia
T +61 2 9232 5877
ptw.com.au

Peddie Thorp & Walker P/L
ABN 23 000 454 624
trading as PTW Architects

NSW Nominated Architects
S Parsons Architect No.5098
D Jones Architect No.4778



1 : 300 @ A1
Project PA030471
GLENWOOD HIGH SCHOOL
FORMAN AVENUE, GLENWOOD, NSW
2768
Status
SSDA SUBMISSION

Title
SSDA
GA - LEVEL 00
Drawing Number
DA-AR-N103

Revision
E